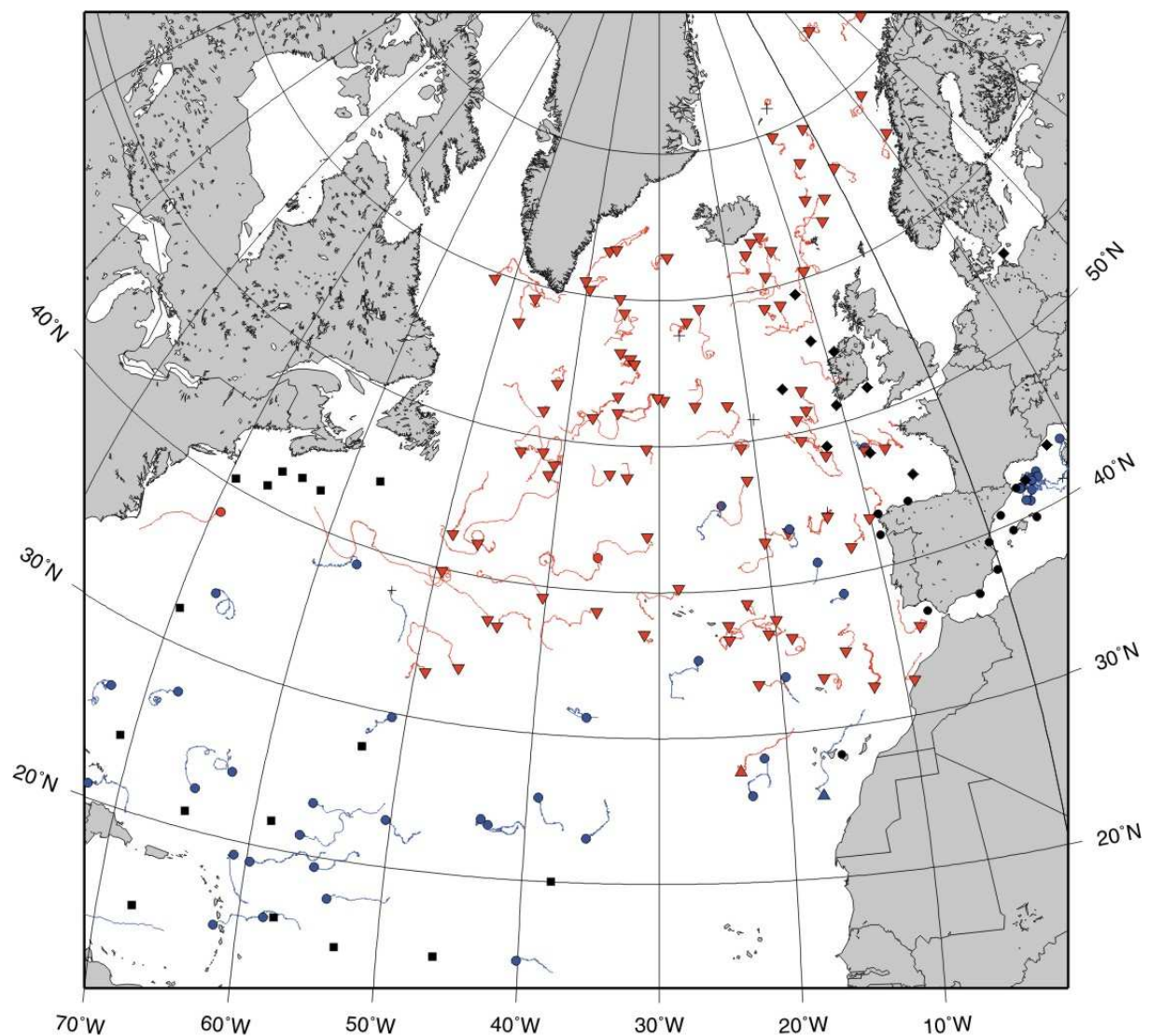
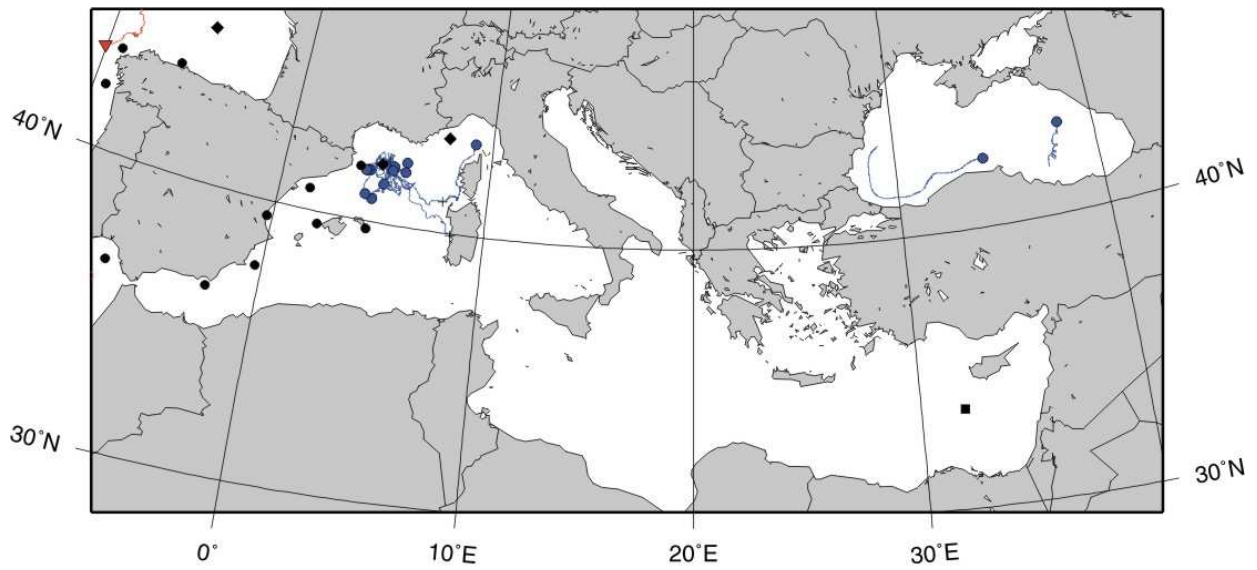


DATA BUOY MONTHLY REPORT

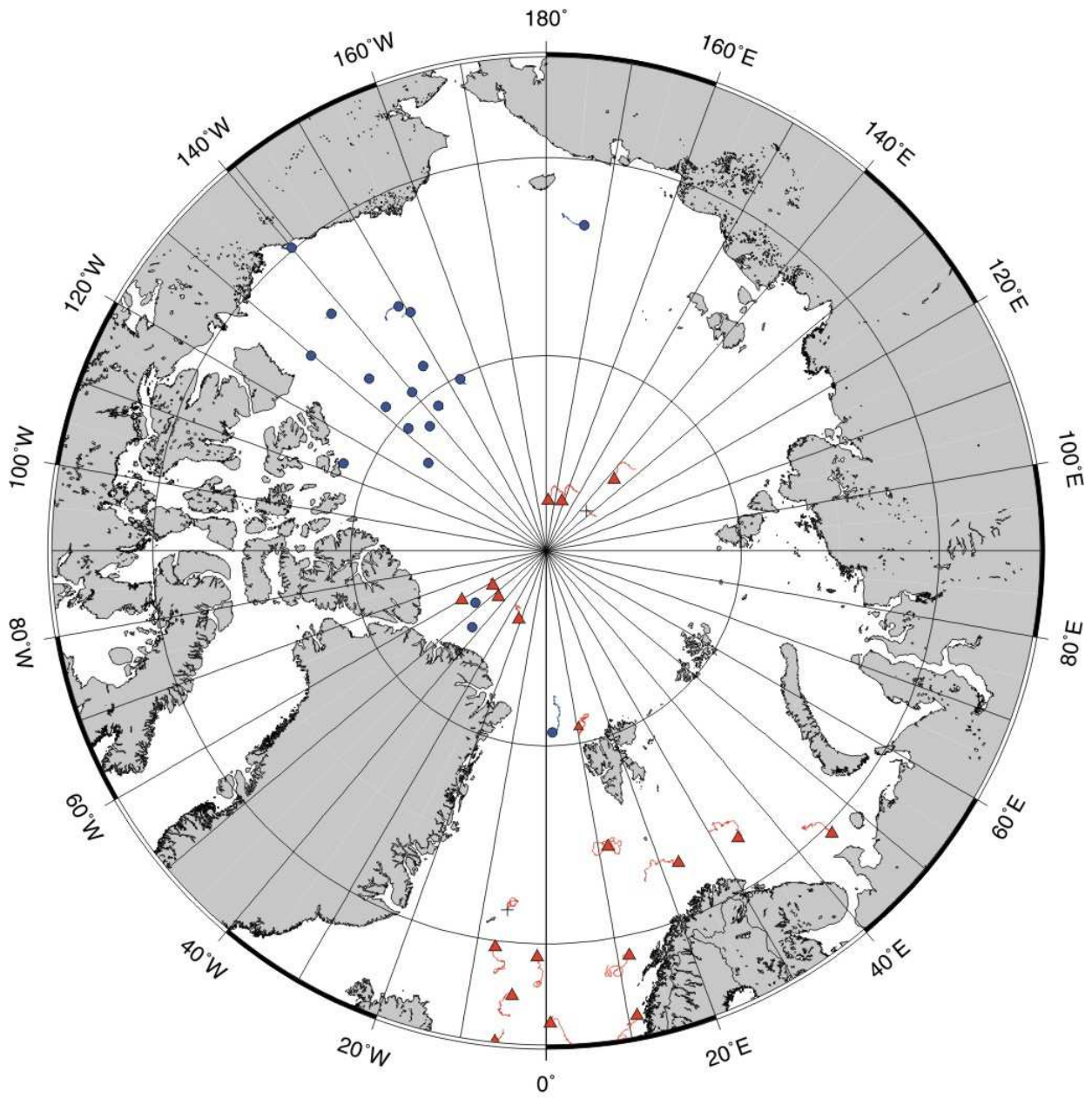
February 2013



February 2013 - Operating data buoys in the North Atlantic
Drifting buoy trajectories: E-SURFMAR (red), others (blue)
Moored buoy positions (black)



February 2013 - Operating data buoys in the Mediterranean Sea
Drifting buoy trajectories and moored buoy positions



February 2013 - Drifting buoy trajectories in Arctic Ocean and adjacent seas: E-SURFMAR (red), others (blue)

DRIFTING BUOYS

Network status

By the end of February, **97 drifting buoys**, reporting air pressure or wind at least onto the GTS, were in operation in the frame of E-SURFMAR. Out of these, 71 were E-SURFMAR funded Iridium SVP-Bs, including 6 in the Arctic and 7 HRSST-2 buoys. These latter are fitted with accurate digital SST probes. The remaining buoys were: one ICEB buoy in the Arctic, 3 Argos and 21 Iridium drifters owned by NOAA and upgraded with barometers by E-SURFMAR, and one Iridium drifter operated by Environment Canada.

Information about the availability of buoys for future deployments may be get from the E-SURFMAR wikisite (working area) at: http://esurfmar.meteo.fr/wikisurf-wa/index.php/Availability_of_drifting_buoys

Besides E-SURFMAR buoys, 46 drifting buoys were reporting at least air pressure or wind observations from the EUCOS area of interest. Out of these, 15 were reporting Sea Surface Salinity, some in the frame of Spurs/Strasse campaign (validation of SMOS and Aquarius remote SSS measurements) and 12 were operating in the frame of HyMeX in the Mediterranean Sea.

Drifting buoys - New deployments

WMO	Telcom	Typ	Ow	Dep_Date	DepLat	DepLon	From	Comment
4400770	11798230	MSB	E2	20130222	48.5	-40.0	Fos-sur-Mer	Milan Express
4400771	60507000	MSB	E2	20130222	48.6	-37.0	Fos-sur-Mer	Milan Express
6200514	60203700	MSB	E2	20130222	48.7	-30.9	Fos-sur-Mer	Milan Express
6200515	11795230	MSB	E2	20130222	48.7	-34.0	Fos-sur-Mer	Milan Express
6400619	11544440	MSB	UP	20130202	61.5	-12.2	Rotterdam	Selfoss
6400661	11543430	MSB	EU	20130208	62.9	-15.1	Rotterdam	Selfoss

Operating drifting buoys in North Atlantic by the end of the month

WMO	Telcom	Typ	Ow	nobs	Wi	AT	AP	dP	ST	Wa	Ws	Dr	Sb	U	SS	O	Start_end	Lat	Lon	Age
2500615	13409520	MIB	EU	669	-	-	X	X	-	-	-	X	-	-	-	T	0102-2802	84.98	-59.61	538
2500616	11549100	MSB	EU	670	-	-	X	X	-	-	-	X	-	-	-	T	0102-2802	87.31	162.54	173
2500617	11540100	MSB	EU	672	-	-	X	X	-	-	-	X	-	-	-	T	0102-2802	87.43	177.71	173
2500622	11540110	MSB	EU	670	-	-	X	X	-	-	-	X	-	-	-	T	0102-2802	84.94	136.32	178
2600555	11545100	MSB	EU	672	-	-	X	X	-	-	-	X	-	-	-	T	0102-2802	86.21	-21.85	164
2600556	11549180	MSB	EU	672	-	-	X	X	-	-	-	X	-	-	-	T	0102-2802	86.73	-57.15	159
2600557	11544090	MSB	EU	672	-	-	X	X	-	-	-	X	-	-	-	T	0102-2802	86.60	-45.90	161
4400549	11025170	MSB	EU	671	-	-	X	X	X	-	-	X	-	-	-	T	0102-2802	59.06	-34.60	389
4400551	11027150	MSB	EU	672	-	-	X	X	-	-	-	X	-	-	-	T	0102-2802	38.59	-35.46	389
4400606	11687410	MSB	EU	671	-	-	X	X	X	-	-	X	-	-	-	T	0102-2802	39.23	-40.28	147
4400620	11022170	MSB	EU	670	-	-	X	X	X	-	-	X	-	-	-	T	0102-2802	37.60	-23.99	388
4400622	11881820	PSB	UP	670	-	-	X	X	-	-	-	X	-	-	-	T	0102-2802	37.21	-44.79	235
4400623	11167640	MSB	EU	669	-	-	X	X	X	-	-	X	-	-	-	T	0102-2802	52.22	-34.59	107
4400624	11341110	YSB	EU	653	-	-	X	X	X	-	-	X	-	-	-	T	0102-2802	42.40	-49.22	80
4400629	11021160	MSB	EU	670	-	-	X	X	X	-	-	X	-	-	-	T	0102-2802	48.09	-12.85	329
4400630	13015830	MSB	EU	669	-	-	X	X	X	-	-	X	-	-	-	T	0102-2802	43.53	-17.84	274
4400685	12762900	MSB	CA	670	-	-	X	X	X	-	-	X	-	-	-	O	0102-2802	39.86	-49.48	280
4400721	13805460	MSB	EU	675	-	-	X	X	X	-	-	X	-	-	-	T	0102-2802	33.74	-46.55	274
4400723	10825630	MSB	EU	671	-	-	X	X	X	-	-	X	-	-	-	T	0102-2802	60.42	-39.66	249
4400724	13300270	MSB	EU	671	-	-	X	X	X	-	-	X	-	-	-	T	0102-2802	55.97	-33.51	250
4400726	11023190	MSB	EU	670	-	-	X	X	X	-	-	X	-	-	-	T	0102-2802	50.87	-15.07	250
4400728	11020190	MSB	EU	670	-	-	X	X	X	-	-	X	-	-	-	T	0102-2802	52.53	-22.35	251
4400730	11846540	MSB	E2	672	-	-	X	X	S	-	-	X	-	-	-	T	0102-2802	49.01	-42.13	228
4400740	11883820	PSB	UP	671	-	-	X	X	X	-	-	X	-	-	-	T	0102-2802	33.06	-49.20	236
4400741	11688230	MSB	EU	670	-	-	X	X	X	-	-	X	-	-	-	T	0102-2802	36.90	-43.90	160
4400744	13805450	MSB	EU	671	-	-	X	X	X	-	-	X	-	-	-	T	0102-2802	40.29	-28.27	449
4400746	13357510	MSB	EU	447	-	-	X	X	X	-	-	X	-	-	-	T	0102-2802	58.66	-13.99	448
4400760	11880820	PSB	UP	671	-	-	X	X	X	-	-	X	-	-	-	T	0102-2802	47.53	-41.23	234
4400761	11883770	PSB	UP	670	-	-	X	X	X	-	-	X	-	-	-	T	0102-2802	60.46	-9.71	234
4400762	11244970	YSB	EU	650	-	-	X	X	X	-	-	X	-	-	-	T	0102-2802	42.15	-46.81	75
4400767	11919510	MSB	EU	670	-	-	X	X	X	-	-	X	-	-	-	T	0102-2802	43.02	-20.12	399

E-SURFMAR DB Monthly Report February 2013

4400768	11912520	MSB	EU	670	-	-	X	X	X	-	-	X	-	-	-	T	0102-2802	41.78	-12.32	400
4400770	11798230	MSB	E2	145	-	-	X	X	X	-	-	X	-	-	-	T	2202-2802	48.25	-40.78	7
4400771	60507000	MSB	E2	154	-	-	X	X	X	-	-	X	-	-	-	T	2202-2802	48.01	-35.06	7
4400772	11544410	MSB	UP	671	-	-	X	X	X	-	-	X	-	-	-	T	0102-2802	53.73	-41.79	225
4400774	11460700	MSB	UP	670	-	-	X	X	X	-	-	X	-	-	-	T	0102-2802	48.80	-44.44	226
4400775	11540170	MSB	E2	672	-	-	X	X	X	-	-	X	-	-	-	T	0102-2802	55.62	-33.00	225
4400777	11885820	PSB	UP	670	-	-	X	X	X	-	-	X	-	-	-	T	0102-2802	53.15	-29.51	222
4400778	11463700	MSB	UP	672	-	-	X	X	X	-	-	X	-	-	-	T	0102-2802	47.35	-21.15	223
4400779	11885820	PSB	UP	671	-	-	X	X	X	-	-	X	-	-	-	T	0102-2802	53.34	-30.18	223
4400780	11880840	PSB	UP	670	-	-	X	X	X	-	-	X	-	-	-	T	0102-2802	53.35	-34.71	223
4400844	37533	TSB	UP	672	-	-	X	X	X	-	-	X	-	-	-	L	0102-2802	27.56	-23.68	672
4400864	13614150	MSB	EU	671	-	-	X	X	X	-	-	X	-	-	-	T	0102-2802	47.51	-6.88	384
4400866	11020180	MSB	EU	669	-	-	X	X	X	-	-	X	-	-	-	T	0102-2802	52.74	-13.90	374
4400867	11022740	MSB	EU	670	-	-	X	X	X	-	-	X	-	-	-	T	0102-2802	43.84	-31.11	374
4400869	11026040	MSB	EU	672	-	-	X	X	X	-	-	X	-	-	-	T	0102-2802	37.70	-19.89	365
4400871	11025180	MSB	EU	671	-	-	X	X	X	-	-	X	-	-	-	T	0102-2802	63.17	-4.73	363
4400872	11027700	MSB	EU	671	-	-	X	X	X	-	-	X	-	-	-	T	0102-2802	44.07	-13.94	349
4400875	11021610	MSB	EU	672	-	-	X	X	X	-	-	X	-	-	-	T	0102-2802	38.98	-22.28	349
4400885	39086	TSB	UP	672	-	-	X	X	X	-	-	X	-	-	-	L	0102-2802	25.57	-17.52	672
4800662	10822620	MSB	EU	671	-	-	X	X	X	-	-	X	-	-	-	T	0102-2802	51.74	-37.33	202
4800663	10822640	MSB	EU	670	-	-	X	X	X	-	-	X	-	-	-	T	0102-2802	51.77	-42.80	202
6200511	11026160	MSB	EU	672	-	-	X	X	X	-	-	X	-	-	-	T	0102-2802	32.35	-12.51	360
6200514	60203700	MSB	E2	154	-	-	X	X	X	-	-	X	-	-	-	T	2202-2802	49.84	-31.37	7
6200515	11795230	MSB	E2	154	-	-	X	X	X	-	-	X	-	-	-	T	2202-2802	47.83	-33.26	7
6200518	11024270	MSB	EU	638	-	-	X	X	S	-	-	X	-	-	-	T	0102-2802	32.30	-9.24	387
6200520	13611180	MSB	EU	672	-	-	X	X	X	-	-	X	-	-	-	T	0102-2802	33.43	-16.47	387
6200521	11688060	MSB	EU	672	-	-	X	X	X	-	-	X	-	-	-	T	0102-2802	49.59	-21.36	162
6200522	11680430	MSB	EU	672	-	-	X	X	X	-	-	X	-	-	-	T	0102-2802	47.80	-8.86	161
6200531	11548410	MSB	UP	671	-	-	X	X	X	-	-	X	-	-	-	T	0102-2802	52.69	-25.96	141
6200532	11566230	MSB	UP	673	-	-	X	X	X	-	-	X	-	-	-	T	0102-2802	60.78	-15.05	140
6200554	11027160	MSB	EU	671	-	-	X	X	X	-	-	X	-	-	-	T	0102-2802	36.80	-20.64	359
6200555	11023170	MSB	EU	670	-	-	X	X	X	-	-	X	-	-	-	T	0102-2802	35.64	-7.89	360
6200556	11021170	MSB	EU	671	-	-	X	X	X	-	-	X	-	-	-	T	0102-2802	36.40	-18.68	359
6200557	11028160	MSB	EU	671	-	-	X	X	X	-	-	X	-	-	-	T	0102-2802	43.34	-10.08	276
6200677	11022050	MSB	EU	216	-	-	X	X	X	-	-	X	-	-	-	T	0102-2702	33.43	-21.83	385
6200678	11029050	MSB	EU	671	-	-	X	X	X	-	-	X	-	-	-	T	0102-2802	62.49	-17.16	376
6200680	11166640	MSB	EU	672	-	-	X	X	X	-	-	X	-	-	-	T	0102-2802	58.46	-26.48	104
6200681	11168640	MSB	EU	671	-	-	X	X	X	-	-	X	-	-	-	T	0102-2802	62.91	-28.80	105
6200682	11541080	MSB	EU	263	-	-	X	X	X	-	-	X	-	-	-	T	1302-2802	51.34	-13.85	236
6200684	11882820	PSB	UP	672	-	-	X	X	X	-	-	X	-	-	-	T	0102-2802	64.52	-3.00	231
6200685	11461700	MSB	UP	671	-	-	X	X	X	-	-	X	-	-	-	T	0102-2802	62.42	-13.37	232
6200686	11845450	MSB	E2	417	-	-	X	X	-	-	X	-	-	-	-	T	1102-2802	60.92	-40.38	230
6200687	11349100	YSB	EU	669	-	-	X	X	X	-	-	X	-	-	-	T	0102-2802	58.69	-16.11	84
6200697	11020160	MSB	EU	672	-	-	X	X	X	-	-	X	-	-	-	T	0102-2802	35.00	-14.37	393
6200713	11246980	YSB	EU	655	-	-	X	X	X	-	-	X	-	-	-	T	0102-2802	36.59	-24.02	79
6200714	11240980	YSB	EU	653	-	-	X	X	X	-	-	X	-	-	-	T	0102-2802	37.12	-31.26	76
6200724	39074	TSB	UP	362	-	-	X	X	X	-	-	X	-	-	-	L	0102-2802	31.30	-35.81	670
6300551	11547410	MSB	UP	671	-	-	X	X	X	-	-	X	-	-	-	T	0102-2802	72.38	33.72	219
6300552	11548400	MSB	UP	671	-	-	X	X	X	-	-	X	-	-	-	T	0102-2802	74.55	11.76	218
6300635	11477140	MSB	EU	670	-	-	X	X	X	-	-	X	-	-	-	T	0102-2802	69.01	11.58	141
6300638	11478130	MSB	EU	672	-	-	X	X	X	-	-	X	-	-	-	T	0102-2802	69.67	-7.28	112
6300639	11471050	MSB	EU	669	-	-	X	X	X	-	-	X	-	-	-	T	0102-2802	72.70	22.98	112
6400516	11473100	MSB	EU	671	-	-	X	X	X	-	-	X	-	-	-	T	0102-2802	69.34	-1.26	142
6400518	11472110	MSB	EU	672	-	-	X	X	X	-	-	X	-	-	-	T	0102-2802	64.91	-5.96	142
6400522	11029150	MSB	EU	672	-	-	X	X	X	-	-	X	-	-	-	T	0102-2802	59.99	-35.32	388
6400523	11757730	MSB	UP	669	-	-	X	X	X	-	-	X	-	-	-	T	0102-2802	66.00	11.04	276
6400524	10825640	MSB	EU	669	-	-	X	X	X	-	-	X	-	-	-	T	0102-2802	63.17	-37.48	249
6400525	10824120	MSB	EU	669	-	-	X	X	X	-	-	X	-	-	-	T	0102-2802	59.08	-46.60	249
6400527	11549160	MSB	UP	671	-	-	X	X	X	-	-	X	-	-	-	T	0102-2802	57.22	-47.90	169
6400606	11478100	MSB	EU	670	-	-	X	X	X	-	-	X	-	-	-	T	0102-2802	66.05	0.51	113
6400607	11479100	MSB	EU	672	-	-	X	X	X	-	-	X	-	-	-	T	0102-2802	67.35	-4.39	113
6400619	11544440	MSB	UP	584	-	-	X	X	X	-	-	X	-	-	-	T	0402-2802	63.52	-14.61	27
6400620	11756730	MSB	UP	672	-	-	X	X	X	-	-	X	-	-	-	T	0102-2802	63.32	-36.50	273
6400661	11543430	MSB	UP	483	-	-	X	X	X	-	-	X	-	-	-	T	0802-2802	63.27	-16.05	21
6500591	11887820	PSB	UP	671	-	-	X	X	X	-	-	X	-	-	-	T	0102-2802	59.54	-52.53	221
6500592	11164650	MSB	EU	669	-	-	X	X	X	-	-	X	-	-	-	T	0102-2802	56.34	-34.78	105

----- Drifting buoys which ceased to be operational

WMO	Telcom	Typ	Ow	End_Date	Lat	Lon	Age	Cause
2500620	11541100	MSB	EU	20130212	87.1	134.87	176	Unknown
4400616	11813550	MSB	EU	20130227	59.3	-24.70	402	Faded (batteries empty)

E-SURFMAR DB Monthly Report February 2013

4400626	11814550	MSB	EU	20130201	44.3	-13.85	329	AP measurements failed
4400725	11027170	MSB	EU	20130222	49.4	-15.04	245	AP measurements failed
4400727	11026170	MSB	EU	20130202	51.4	-19.67	225	All measurements failed whilst still emitting
4400745	13010870	MSB	EU	20130206	48.6	-4.64	427	Ashore in France
4400776	11844540	MSB	E2	20130218	52.7	-8.57	214	Ashore in Ireland
4400835	89827	TSP	UP	20130219	80.8	10.42	890	AP measurements failed
6200688	11248950	YSB	EU	20130214	57.6	-27.46	69	All measurements failed whilst still emitting
6300553	11549400	MSB	UP	20130221	69.8	32.07	211	Ashore in Russia
6300645	11546070	MSB	EU	20130224	71.6	-6.15	251	Caught by sea ice ?

----- Non-operating drifting buoys reporting GTS data

WMO	Telcom	Typ	Ow	nobs	Wi	AT	AP	dP	ST	Wa	Ws	Dr	Sb	U	SS	O	Start_end	Lat	Lon	Age
4400603	11540410	MSB	UP	671	-	-	-	-	X	-	-	X	-	-	-	T	0102-2802	52.55	-26.59	151
4400626	11814550	MSB	EU	672	-	-	S	S	X	-	-	X	-	-	-	T	0102-2802	44.32	-13.85	329
4400627	11028170	MSB	EU	670	-	-	-	-	X	-	-	X	-	-	-	T	0102-2802	50.13	-14.06	329
4400687	12294040	MSB	CA	668	-	-	-	-	X	-	-	S	-	-	-	O	0102-2802	44.56	-40.10	278
4400725	11027170	MSB	EU	671	-	-	S	S	X	-	-	X	-	-	-	T	0102-2802	49.44	-15.04	251
4400739	11023610	MSB	EU	670	-	-	-	-	X	-	-	X	-	-	-	T	0102-2802	34.05	-35.84	385
4400835	89827	TSP	UP	673	-	-	S	S	X	-	-	X	-	-	-	L	0102-2802	80.81	10.42	799
4400865	11022610	MSB	EU	670	-	-	-	-	X	-	-	X	-	-	-	T	0102-2802	45.18	-27.66	375
4400873	11022600	MSB	EU	672	-	-	-	-	X	-	-	X	-	-	-	T	0102-2802	49.49	-20.28	349
6300642	11548080	MSB	EU	669	-	-	-	-	X	-	-	X	-	-	-	T	0102-2802	75.66	6.15	256

----- Non-operating drifting buoys which ceased to emit

WMO	Telcom	Typ	Ow	End_Date	Lat	Lon	Age	Cause
6200722	37773	TSB	UP	20130226	20.9	-58.2	854	Battery empty

----- Other operating drifting buoys into the EUCOS area of interest by the end of the month

WMO	Telcom	Typ	Ow	nobs	Wi	AT	AP	dP	ST	Wa	Ws	Dr	Sb	U	SS	O	Start_end	Lat	Lon
1300577	114638	LODY		1219	-	-	X	-	X	-	-	X	-	-	X	T	0102-2802	23.03	-35.42
1300600	43869	AOML		671	-	-	X	X	-	-	-	X	-	-	-	L	0102-2802	35.30	-26.72
1300621	44096	AOML		543	-	-	X	X	X	-	-	X	-	-	-	L	0102-2802	23.06	-50.38
1300659	11910180	UKMO		671	-	-	X	X	X	-	-	X	-	-	-	T	0102-2802	33.78	-19.57
1300660	11022040	UKMO		672	-	-	X	X	X	-	-	X	-	-	-	T	0102-2802	25.91	-22.87
1300661	11912280	UKMO		670	-	-	X	X	X	-	-	X	-	-	-	T	0102-2802	28.40	-21.83
3100739	11544480	CMM		669	-	-	X	X	X	-	-	X	-	-	X	T	0102-2802	10.46	-48.65
3100740	11976470	CMM		595	-	-	X	X	X	-	-	X	-	-	X	T	0102-2802	7.93	-48.02
4100597	11542410	CMM		671	-	-	X	X	X	-	-	X	-	-	-	T	0102-2802	19.34	-55.09
4100599	11546410	CMM		671	-	-	X	X	X	-	-	X	-	-	-	T	0102-2802	14.52	-40.11
4100600	11562040	CMM		672	-	-	X	X	X	-	-	X	-	-	-	T	0102-2802	25.68	-39.16
4100601	11567080	CMM		359	-	-	X	X	X	-	-	X	-	-	-	T	0102-2802	17.47	-53.90
4100612	123247	AOML		670	-	-	X	X	X	-	-	X	-	-	-	L	0102-2802	33.74	-67.30
4100616	101618	AOML		669	-	-	X	X	X	-	-	X	-	-	-	L	0102-2802	38.71	-56.85
4100633	114634	LODY		1280	-	-	X	-	X	-	-	X	-	-	X	T	0102-2802	23.56	-42.79
4100634	114632	LODY		1291	-	-	X	-	X	-	-	X	-	-	X	T	0102-2802	23.89	-43.37
4100635	11544420	CMM		671	-	-	X	X	X	-	-	X	-	-	-	T	0102-2802	14.81	-61.67
4100636	11568080	CMM		669	-	-	X	X	X	-	-	X	-	-	-	T	0102-2802	19.16	-60.95
4100637	13801460	CMM		670	-	-	X	X	X	-	-	X	-	-	-	T	0102-2802	21.17	-56.47
4100638	10827640	CMM		670	-	-	X	X	X	-	-	X	-	-	-	T	0102-2802	15.77	-58.21
4100695	12724770	CMM		664	-	-	X	X	X	-	-	-	-	-	-	T	0102-2802	50.86	-18.48
4100733	36606	LODY		2293	-	-	X	-	X	-	-	X	-	-	X	T	0102-2802	18.94	-59.73
4100735	10729990	CMM		672	-	-	X	X	X	-	-	X	-	-	X	T	0102-2802	24.00	-62.23
4100738	11919170	UKMO		330	-	-	X	X	X	-	-	X	-	-	-	T	0102-2802	23.32	-55.89
4100739	11912120	UKMO		671	-	-	X	X	-	-	-	X	-	-	-	T	0102-2802	22.43	-64.63
4100945	93003	AOML		551	-	-	X	X	X	-	-	X	-	-	-	L	0102-2802	27.45	-67.69
4100960	93006	AOML		586	-	-	X	-	X	-	-	X	-	-	-	L	0102-2802	45.80	-23.94
4300508	101605	AOML		80	-	-	X	X	S	-	-	X	-	-	-	L	2502-2802	38.23	-69.41
4300534	114642	AOML		2499	-	-	X	-	X	-	-	X	-	-	-	L	0102-2802	42.27	-35.69
4400839	101615	AOML		668	-	-	X	X	-	-	-	X	-	-	-	L	0102-2802	29.72	-51.14

E-SURFMAR DB Monthly Report February 2013

6100522	10202710	CMM	657	-	-	X	X	X	-	-	X	-	-	-	T	0102-2802	42.30	5.89
6100523	10209530	CMM	657	-	-	X	X	X	-	-	X	-	-	-	T	0102-2802	40.81	4.47
6100524	10450430	CMM	138	-	-	X	X	X	-	-	X	-	-	X	T	2202-2802	41.83	4.18
6100525	10452500	CMM	140	-	-	X	X	X	-	-	X	-	-	X	T	2202-2802	41.82	4.07
6100527	10455570	CMM	657	-	-	X	X	X	-	-	X	-	-	-	T	0102-2802	41.41	4.91
6100529	49767	CMM	643	-	-	X	X	X	-	-	X	-	-	-	T	0102-2802	40.95	4.11
6100530	11549070	CMM	598	-	-	X	X	X	-	-	X	-	-	X	T	0102-2802	41.80	3.98
6100531	30674	CMM	542	X	X	-	-	X	-	-	-	-	-	-	T	0102-2802	42.09	5.30
6100532	30675	CMM	565	S	-	X	X	X	-	-	-	-	-	-	T	0102-2802	41.95	5.89
6100689	11248940	MARL	659	-	-	X	X	-	-	-	X	-	-	-	T	0102-2802	42.46	34.34
6100690	11249940	MARL	650	-	-	X	X	X	-	-	X	-	-	-	T	0102-2802	43.20	38.26
6100787	73224	AOML	754	-	-	X	X	X	-	-	X	-	-	X	T	0102-2802	43.32	9.12
6200501	11540090	CMM	116	-	-	X	X	-	-	-	X	-	-	X	T	1102-2802	41.17	-15.60
6200502	11758720	CMM	670	-	-	X	X	X	-	-	X	-	-	X	T	0102-2802	43.71	-17.67
6200503	11758700	CMM	668	-	-	X	X	X	-	-	X	-	-	X	T	0102-2802	47.97	-8.78
6200505	11120780	CMM	668	-	-	X	X	X	-	-	X	-	-	X	T	0102-2802	38.81	-13.72

----- Abbreviations -----

WMO : WMO id.
Argos : Argos id.
Typ : Buoy type
- first character : Manufacturer (C = ConMar , M = Metocean, P = Pacific Gyre
T = Technocean, Y = Marlin-Yug...)
- second character : Main type (F = FGGE, I = ICEB, S = SVP)
- third character : Sub type (B = barometer buoy, W = Wind buoy,
S = Salinity buoy)
Ow : Buoy owner (country code or EU for EUCOS, E2 for HRSST-2 buoys, UP for upgraded
buoys)
Owner : Buoy owner for non EUCOS buoys
Nobs : number of GTS reports received at Meteo-France
Parameters (X = OK, S = stopped, - = not measured) :
Wi : Wind
AT : Air Temperature
AP : Air Pressure
dP : Air pressure tendency
ST : Sea surface Temperature
Wa : Wave period and height
Ws : Wave spectra
Dr : Drogue presence
Sb : Subsurface temperature
U : Relative humidity
SS : Sea surface Salinity
O : Origin of the reports (T = Argos Toulouse, L = Argos Largo, O = Other)
Start_end : first and last dates of the month for which GTS data were received at Meteo-France
Lat : Latitude of the latest position
Lon : Longitude of the latest position
Age : Age of the buoy (days)

DepDate : Date of deployment
DepLat : Latitude of deployment
Dep Lon : Longitude of Deployment
From : Harbour of departure

Definition : An operating drifting buoy is a buoy providing at least air pressure or wind
(direction and velocity) data.

MOORED BUOYS

No data have been received from Greek moored buoys since the 1st of July 2012.

The GTS transmission was stopped at a few occasions for UK and Irish moored buoys. This explains why most of the buoys did not sent 672 expected messages onto the GTS. Some observations were sent with significant delays when the transmission worked back.

Operating EGOS moored buoys (K-pattern)

WMO	Name	nobs	Wi	AT	AP	dP	ST	Wa	Ws	Dr	Sb	U	SS	O	Start_end	Lat	Lon
6100001	Cote d'Azur	652	X	X	X	X	X	X	X	-	-	X	-	T	0102-2802	43.40	7.80
6100002	Lion	671	X	X	X	X	X	X	X	-	-	X	-	T	0102-2802	42.10	4.70
6200001	Gascogne	653	X	X	X	X	X	X	X	-	-	X	-	O	0102-2802	45.30	-5.00
6200029	K1	653	X	X	X	X	X	X	X	-	-	X	-	O	0102-2802	48.70	-12.50
6200081	K2	-	-	-	-	-	-	-	-	-	-	-	-	-	-	51.00	-13.20
6200090	M1	-	-	-	-	-	-	-	-	-	-	-	-	-	-	53.10	-11.20
6200091	M2	669	X	X	X	-	X	-	-	-	-	X	X	O	0102-2802	53.50	-5.40
6200092	M3	331	S	S	S	-	S	S	-	-	-	S	S	-	0102-2102	51.20	-10.50
6200093	M4	93	S	S	S	-	S	-	-	-	-	-	S	-	0102-0402	54.70	-9.10
6200094	M5	666	X	X	X	-	X	X	-	-	-	X	-	O	0102-2802	51.70	-6.70
6200095	M6	650	X	X	X	X	X	X	X	-	-	X	-	O	0102-2802	53.10	-15.90
6200105	K4	650	X	X	X	X	X	X	X	-	-	X	-	O	0102-2802	55.80	-11.40
6200108	K3	-	-	-	-	-	-	-	-	-	-	-	-	-	-	53.50	-19.50
6200163	Brittany	651	X	X	X	X	X	X	X	-	-	X	-	O	0102-2802	47.50	-8.40
6400045	K5	641	X	X	X	X	X	X	X	-	-	X	-	O	0102-2802	59.10	-11.70
6400046	K7	-	-	-	-	-	-	-	-	-	-	-	-	-	-	60.70	-5.20

Comments:

- EUCOS moored buoys are presented in bold characters.

Operating EGOS moored buoys (Spanish SeaWatch and WaveScan)

WMO	Name	nobs	Wi	AT	AP	dP	ST	Wa	Ws	Dr	Sb	U	SS	O	Start_end	Lat	Lon
1300130	Gran Canaria	655	X	X	X	-	X	X	X	-	-	-	X	O	0102-2802	28.18	-15.82
1300131	Tenerife Sur	651	X	X	X	-	X	X	X	-	-	-	S	O	0102-2802	28.00	-16.58
6100196	C. Begur	666	X	X	X	-	-	X	X	-	-	-	-	O	0102-2802	41.92	3.65
6100197	Mahon	666	X	X	X	-	-	X	X	-	-	-	-	O	0102-2802	39.72	4.42
6100198	C. de Gata	666	X	X	X	-	-	X	X	-	-	-	-	O	0102-2802	36.57	-2.33
6100280	Tarragona	666	X	X	X	-	X	X	X	-	-	-	X	O	0102-2802	40.77	1.47
6100281	Valencia	666	X	X	X	-	X	X	X	-	-	-	X	O	0102-2802	39.47	-0.27
6100417	C. de Palos	666	X	X	X	-	X	X	X	-	-	-	X	O	0102-2802	37.65	-0.32
6100430	Dragonera	666	X	X	X	-	X	X	X	-	-	-	-	O	0102-2802	39.56	2.11
6200024	Bilbao-Visc.	-	-	-	-	-	-	-	-	-	-	-	-	-	-	43.63	-3.03
6200025	C. de Penas	666	X	X	X	-	X	X	X	-	-	-	X	O	0102-2802	43.73	-6.17
6200082	E. de Bares	-	-	-	-	-	-	-	-	-	-	-	-	-	-	44.13	-7.69
6200083	Villano-Sis.	-	-	-	-	-	-	-	-	-	-	-	-	-	-	43.48	-9.22
6200084	C. Silleiro	666	X	X	X	-	X	X	X	-	-	-	S	O	0102-2802	42.12	-9.43
6200085	G. de Cadiz	666	X	X	X	-	X	X	X	-	-	-	X	O	0102-2802	36.48	-6.97
0	Santander	-	-	-	-	-	-	-	-	-	-	-	-	-	-	43.84	-3.77

Comments:

- The EUCOS buoy is presented in bold characters.

Operating ISPRA moored buoys (Italy)

WMO	Name	nobs	Wi	AT	AP	dP	ST	Wa	Ws	Dr	Sb	U	SS	O	Start_end	Lat	Lon
6100207		501	-	-	-	-	S	S	-	-	-	-	-	-	0102-2602	37.44	15.15
6100208		-	-	-	-	-	-	-	-	-	-	-	-	-	-	37.52	12.53
6100209		455	-	-	-	-	X	X	-	-	-	-	-	O	1902-2802	38.26	13.33

**E-SURFMAR DB Monthly Report
February 2013**

6100210	-	-	-	-	-	-	-	-	-	-	-	-	-	-	39.02	17.22
6100211	-	-	-	-	-	-	-	-	-	-	-	-	-	-	39.45	15.92
6100212	-	-	-	-	-	-	-	-	-	-	-	-	-	-	40.62	9.89
6100213	-	-	-	-	-	-	-	-	-	-	-	-	-	-	40.55	8.11
6100214	907	-	-	-	-	X	X	-	-	-	-	-	O	0102-2802	40.87	12.95
6100215	-	-	-	-	-	-	-	-	-	-	-	-	-	-	40.98	17.38
6100216	-	-	-	-	-	-	-	-	-	-	-	-	-	-	42.24	11.55
6100218	1330	-	-	-	-	X	X	-	-	-	-	-	O	0102-2802	43.83	13.72
6100219	1338	-	-	-	-	X	X	-	-	-	-	-	O	0102-2802	43.93	9.83
6100220	1311	-	-	-	-	X	X	-	-	-	-	-	O	0102-2802	45.33	12.52
6100221	1320	-	-	-	-	X	X	-	-	-	-	-	O	0102-2802	39.12	9.40

Operating POSEIDON moored buoys (Greece)

WMO	Name	nobs	Wi	AT	AP	dP	ST	Wa	Ws	Dr	Sb	U	SS	O	Start_end	Lat	Lon
6101000		-	-	-	-	-	-	-	-	-	-	-	-	-		39.10	24.50
6101001		-	-	-	-	-	-	-	-	-	-	-	-	-		37.60	23.60
6101002		-	-	-	-	-	-	-	-	-	-	-	-	-		37.00	22.10
6101003		-	-	-	-	-	-	-	-	-	-	-	-	-		40.00	24.70
6101004		-	-	-	-	-	-	-	-	-	-	-	-	-		39.10	25.80
6101005		-	-	-	-	-	-	-	-	-	-	-	-	-		37.50	25.50
6101006		-	-	-	-	-	-	-	-	-	-	-	-	-		36.30	25.50
6101007		-	-	-	-	-	-	-	-	-	-	-	-	-		35.80	24.90
6101008		-	-	-	-	-	-	-	-	-	-	-	-	-		36.80	21.60
6101009		-	-	-	-	-	-	-	-	-	-	-	-	-		38.00	20.60

Other European moored buoys

WMO	Name	nobs	Wi	AT	AP	dP	ST	Wa	Ws	Dr	Sb	U	SS	O	Start_end	Lat	Lon
6100010	Italia-1	-	-	-	-	-	-	-	-	-	-	-	-	-		43.80	9.10
6200442	PAP	653	X	X	X	X	X	X	-	-	-	X	-	O	0102-2802	49.00	-16.40
6600021	Arkona Becken	668	X	X	-	-	X	X	-	-	-	-	-	O	0102-2802	54.90	13.90
6600022	Oder Bank	-	-	-	-	-	-	-	-	-	-	-	-	-		54.10	14.20
6600024	Darsser Schwelle	-	-	-	-	-	-	-	-	-	-	-	-	-		54.70	12.70

Offshore moored buoys in the western part of the EUCOS area

WMO	Name	nobs	Wi	AT	AP	dP	ST	Wa	Ws	Dr	Sb	U	SS	O	Start_end	Lat	Lon
1300308	East Atlantic	-	-	-	-	-	-	-	-	-	-	-	-	-		15.00	-38.00
4100026		309	X	X	-	-	-	-	-	-	-	X	-	L	0102-2802	11.49	-38.40
4100040	West Atlantic	660	X	X	X	X	X	X	-	-	-	X	-	O	0102-2802	14.50	-53.00
4100041	Mid. Atlantic	666	X	X	X	X	X	X	-	-	-	X	-	O	0102-2802	14.50	-46.00
4100043	Porto Rico	663	X	X	X	X	X	X	-	-	-	S	-	O	0102-2802	21.00	-65.00
4100044		671	X	X	X	X	X	X	-	-	-	X	-	O	0102-2802	21.70	-58.70
4100046		665	X	X	X	X	X	X	-	-	-	X	-	O	0102-2802	23.90	-70.90
4100047		-	-	-	-	-	-	-	-	-	-	-	-	-		27.50	-71.50
4100048		661	X	X	X	X	X	X	-	-	-	S	-	O	0102-2802	32.00	-69.60
4100049		669	-	X	X	X	X	X	-	-	-	X	-	O	0102-2802	27.50	-53.00
4100139		342	X	X	X	-	X	-	-	-	-	X	-	L	0102-2802	20.02	-37.86
4100300	Antilles	660	X	X	X	X	X	X	-	-	-	X	-	T	0102-2802	15.85	-57.47
4200059	Caraibes	671	X	X	X	X	X	X	-	-	-	-	-	O	0102-2802	15.00	-67.50
4400008	A Nantucket	540	-	X	X	X	X	X	-	-	-	-	-	O	0102-2802	40.50	-69.40
4400011	D Georges Bk	-	-	-	-	-	-	-	-	-	-	-	-	-		41.10	-66.60
4400018	SE Cape Cod	-	-	-	-	-	-	-	-	-	-	-	-	-		41.30	-69.30
4400024	NNE Channel	658	X	X	X	-	X	X	-	-	-	-	-	O	0102-2802	42.30	-65.90
4400137	E Scotia Sl.	358	S	S	S	S	S	S	-	-	-	-	-		0102-1602	42.30	-62.00
4400138	SW Gd Banks	-	-	-	-	-	-	-	-	-	-	-	-	-		44.30	-53.60
4400139	Beanquereau	651	X	X	X	X	X	X	-	-	-	-	-	O	0102-2802	44.30	-57.10
4400140	Tail of Bk	-	-	-	-	-	-	-	-	-	-	-	-	-		43.80	-51.70
4400141	Larentian F	-	-	-	-	-	-	-	-	-	-	-	-	-		43.00	-58.00
4400150	La Have Bk	662	X	X	X	X	X	X	-	-	-	-	-	O	0102-2802	42.50	-64.00

E-SURFMAR DB Monthly Report February 2013

Buoy-QC statistics from Meteo-France model outputs

Datend : Date of the last value received on GTS
Recvd : Total number of values received on GTS
GE : Number of Gross Errors (excluded from bias and sd computations)
bias : Mean differences between observation values and co-located model output values
Std : Standard deviation of differences

Air Pressure (hPa), drifting buoys, February 2013

Datend	WMO	Telcom	Recvd	GE	Bias	Std
20130228	2500615	13409520	669	0	-1.1	0.4
20130228	2500616	11549100	670	0	0.1	0.3
20130228	2500617	11540100	672	0	-0.1	0.3
20130212	2500620	11541100	266	0	-0.2	0.4
20130228	2500622	11540110	670	0	-0.0	0.4
20130228	2600555	11545100	672	0	-0.2	0.4
20130228	2600556	11549080	672	0	-0.2	0.4
20130228	2600557	11544090	672	0	-0.3	0.4
20130228	4100597	12058610	671	0	-0.0	1.0
20130228	4100598	13207690	670	0	0.0	0.9
20130228	4100599	13016830	671	0	-0.1	0.5
20130228	4100600	12776720	672	0	-0.1	0.4
20130228	4100601	13800460	359	0	0.1	0.7
20130228	4100637	13801460	670	0	0.0	0.7
20130228	4100638	10827640	670	0	0.1	0.8
20130228	4400549	11025170	671	1	0.1	0.9
20130228	4400551	11027150	672	34	-0.1	1.1
20130228	4400606	11687410	671	0	-0.1	0.7
20130227	4400616	11813550	636	0	0.1	0.8
20130228	4400620	11022170	670	3	-0.2	1.1
20130228	4400622	11881820	670	0	-0.0	1.2
20130228	4400623	11167640	669	0	0.4	0.8
20130228	4400624	11341110	653	0	0.1	0.7
20130202	4400626	11814550	38	29	-8.2	1.4
20130228	4400629	11021160	670	0	-0.1	0.6
20130228	4400630	13015830	669	0	-0.0	0.5
20130228	4400685	12762900	670	83	-0.0	1.5
20130228	4400721	13805460	675	9	0.4	1.6
20130228	4400723	10825630	671	0	0.3	0.8
20130228	4400724	13300270	671	0	-0.3	0.7
20130227	4400725	11027170	637	47	-0.7	2.3
20130228	4400726	11023190	670	0	-0.4	0.4
20130228	4400728	11020190	670	0	-0.0	0.5
20130228	4400730	11846540	672	0	-0.1	0.8
20130228	4400740	11883820	671	0	0.0	0.5
20130228	4400741	11688230	670	0	0.1	0.5
20130228	4400744	13805450	671	0	-0.0	0.4
20130228	4400746	13357510	447	0	0.0	0.6
20130228	4400760	11880820	671	0	-0.0	0.8
20130228	4400761	11883770	670	0	0.0	0.5
20130228	4400762	11244970	650	0	-0.2	0.8
20130228	4400767	11919510	670	5	0.3	0.9
20130228	4400768	11912520	670	0	0.4	0.5
20130228	4400770	11798230	145	0	0.1	0.6
20130228	4400771	60507000	154	0	0.0	1.0
20130228	4400772	11544410	671	2	-0.1	0.9
20130228	4400774	11460700	670	0	-0.1	0.8
20130228	4400775	11540170	672	0	-0.3	0.6
20130218	4400776	11844540	419	19	-1.1	2.3
20130228	4400777	11885820	670	0	0.0	0.6
20130228	4400778	11463700	672	0	-0.3	0.4
20130228	4400779	11885820	671	0	-0.1	0.6
20130228	4400780	11880840	670	0	0.0	0.8
20130225	4400835	83420	598	26	0.1	1.9
20130228	4400844	37533	672	0	0.0	0.4
20130228	4400864	13614150	671	0	0.0	0.4
20130228	4400866	11020180	669	0	0.2	0.4
20130228	4400867	11022740	670	0	-0.2	0.5
20130228	4400869	11026040	672	41	-0.3	1.4
20130228	4400871	11025180	671	0	-0.1	0.6

E-SURFMAR DB Monthly Report February 2013

20130228	4400872	11027700	671	0	0.4	0.4
20130228	4400875	11021610	672	28	0.4	1.3
20130228	4400885	39086	672	0	0.5	0.5
20130228	4800662	10822620	671	0	0.3	0.7
20130228	4800663	10822640	670	0	0.2	0.8
20130228	6200511	11026160	672	0	-0.3	0.4
20130228	6200514	60203700	154	0	0.1	0.4
20130228	6200515	11795230	154	0	0.0	0.6
20130228	6200518	11024270	638	0	-0.6	0.7
20130228	6200520	13611180	672	0	0.0	0.4
20130228	6200521	11688060	672	0	0.1	0.5
20130228	6200522	11680430	672	7	-0.5	1.3
20130228	6200531	11548410	671	0	0.0	0.7
20130228	6200532	11566230	673	23	0.0	1.5
20130228	6200554	11027160	671	0	0.1	0.3
20130228	6200555	11023170	670	2	0.2	0.5
20130228	6200556	11021170	671	0	0.2	0.3
20130228	6200557	11028160	671	7	-0.3	0.9
20130227	6200677	11022050	216	0	0.2	0.4
20130228	6200678	11029050	671	0	0.1	0.8
20130228	6200680	11166640	672	0	0.1	0.7
20130228	6200681	11168640	671	0	-0.1	0.8
20130228	6200682	11541080	263	0	-0.2	0.4
20130228	6200684	11882820	672	0	-0.1	0.5
20130228	6200685	11461700	671	0	-0.2	1.1
20130228	6200686	11845450	417	0	0.0	0.5
20130228	6200687	11349100	669	0	0.2	0.6
20130212	6200688	11248950	89	4	-0.3	2.1
20130228	6200697	12291040	672	13	-0.2	0.8
20130228	6200713	11246980	655	0	-0.0	0.3
20130228	6200714	11240980	653	0	0.1	0.4
20130228	6200724	39074	362	1	0.0	0.4
20130228	6300551	11547410	671	3	-0.4	1.1
20130228	6300552	11548400	417	41	-0.2	2.7
20130221	6300553	11549400	491	1	-0.2	0.8
20130225	6300554	11549410	588	70	-0.7	1.9
20130228	6300635	11477140	670	0	-0.3	0.4
20130228	6300638	11478130	672	0	-0.2	0.5
20130228	6300639	11471050	669	0	-0.2	0.6
20130216	6300645	11546070	291	1	-0.3	0.8
20130228	6400516	11473100	671	0	-0.1	0.4
20130228	6400518	11472110	672	0	-0.1	0.5
20130228	6400522	11029150	672	2	0.1	0.9
20130228	6400523	11757730	669	0	-0.0	0.4
20130228	6400524	10825640	669	0	0.6	0.8
20130228	6400525	10824120	669	0	0.3	0.7
20130228	6400527	11549160	671	7	0.0	0.9
20130228	6400606	11478100	670	0	-0.0	0.4
20130228	6400607	11479100	672	0	-0.0	0.5
20130228	6400619	11544440	584	0	-0.2	0.5
20130228	6400620	11756730	672	0	0.0	0.7
20130228	6400661	11543430	483	0	-0.0	0.4
20130228	6500591	11887820	671	0	0.2	0.6
20130228	6500592	11164650	669	0	-0.1	0.7

Air Pressure (hPa), moored buoys, February 2013

Datend	WMO	Telcom	Recvd	GE	Bias	Std
20130228	1300130		655	0	0.6	0.6
20130228	1300131		651	0	0.0	0.7
20130228	6100001		649	0	-0.2	0.5
20130228	6100002		670	1	-0.5	0.5
20130228	6100196		666	0	0.3	1.0
20130228	6100197		666	0	0.5	0.6
20130228	6100198		666	0	0.3	0.7
20130228	6100280		666	0	-0.0	0.8
20130228	6100281		666	0	-0.0	0.8
20130228	6100417		666	0	0.1	0.7
20130228	6100430		666	0	-0.3	0.7
20130228	6200001		653	0	0.2	0.5
20130228	6200025		666	0	0.5	0.6
20130228	6200029		653	0	0.1	0.6
20130228	6200084		666	0	1.0	0.6

E-SURFMAR DB Monthly Report February 2013

20130228	6200085	666	0	0.2	0.6
20130228	6200091	669	2	0.2	0.5
20130205	6200092	109	3	0.4	1.9
20130204	6200093	93	0	-0.3	1.0
20130228	6200094	666	0	-0.2	0.5
20130228	6200095	650	2	0.3	0.8
20130228	6200105	649	0	0.6	1.6
20130228	6200163	651	0	0.2	0.5
20130228	6400045	641	1	0.2	0.6

Air Temperature (C), moored buoys, February 2013

Datend	WMO	Telcom	Recvd	GE	Bias	Std
20130228	1300130		655	0	-0.8	0.5
20130228	1300131		651	0	-2.3	1.4
20130228	6100001		652	0	-1.5	0.8
20130228	6100002		671	0	-0.5	0.8
20130228	6100196		666	0	-0.2	0.7
20130228	6100197		666	0	0.1	0.8
20130228	6100198		666	0	-0.1	1.3
20130228	6100280		666	0	-0.3	0.7
20130228	6100281		666	0	-0.4	0.7
20130228	6100417		666	0	-0.6	0.7
20130228	6100430		666	0	-0.2	0.7
20130228	6200001		653	0	-0.4	0.7
20130228	6200025		665	0	-0.7	0.8
20130228	6200029		653	0	-0.3	0.6
20130228	6200084		666	0	-0.3	0.6
20130228	6200085		666	0	-0.2	0.6
20130228	6200091		669	0	-0.0	0.5
20130221	6200092		325	0	-1.5	2.3
20130204	6200093		93	0	-0.5	0.7
20130228	6200094		666	0	0.1	0.5
20130228	6200095		643	0	-0.3	0.8
20130228	6200105		650	0	-0.2	0.6
20130228	6200163		651	0	-0.4	0.5
20130228	6400045		641	0	-0.3	0.6
20130228	6600021		663	0	0.1	0.5

Wind direction (deg.), moored buoys, February 2013

Datend	WMO	Telcom	Recvd	GE	Bias	Std
20130228	1300130		654	26	10	24
20130228	1300131		650	43	2	32
20130228	6100001		644	36	5	29
20130228	6100002		671	3	-7	17
20130228	6100196		662	56	-44	49
20130228	6100197		659	8	-13	24
20130228	6100198		651	39	-2	29
20130228	6100280		662	32	-3	26
20130228	6100281		656	38	3	29
20130207	6100417		155	50	-22	60
20130228	6100430		656	12	-12	26
20130228	6200001		652	0	-2	15
20130228	6200025		660	16	-15	24
20130228	6200029		652	2	-3	14
20130228	6200084		662	22	11	16
20130228	6200085		662	17	1	23
20130228	6200091		669	1	4	16
20130221	6200092		330	12	-1	26
20130204	6200093		93	1	-1	18
20130228	6200094		665	1	2	15
20130228	6200095		647	11	-2	12
20130228	6200105		650	4	-3	16
20130228	6200163		651	1	-6	14
20130228	6400045		641	1	2	15
20130228	6600021		660	3	-1	19

Wind speed rate, moored buoys, February 2013

E-SURFMAR DB Monthly Report February 2013

Datend	WMO	Telcom	Recvd	GE	Rate	Err
20130228	1300130		654	2	1.2	2.0
20130228	1300131		650	0	1.4	3.1
20130228	6100001		644	2	1.2	2.0
20130228	6100002		671	5	1.0	1.6
20130228	6100196		662	89	1.1	2.3
20130228	6100197		659	0	1.0	1.8
20130228	6100198		651	0	1.3	3.8
20130228	6100280		662	0	1.2	2.2
20130228	6100281		656	0	1.2	2.2
20130207	6100417		155	15	0.8	1.8
20130228	6100430		656	0	1.1	2.1
20130228	6200001		652	0	1.0	1.3
20130228	6200025		660	2	0.9	2.0
20130228	6200029		652	0	1.0	1.3
20130228	6200084		662	0	1.0	1.5
20130228	6200085		662	0	1.0	1.6
20130228	6200091		669	0	0.9	1.4
20130221	6200092		324	7	0.9	2.5
20130204	6200093		93	0	1.0	2.0
20130228	6200094		665	0	0.9	1.3
20130228	6200095		641	1	1.0	1.9
20130228	6200105		650	0	1.0	1.4
20130228	6200163		651	0	1.0	1.2
20130228	6400045		641	0	1.0	1.6
20130228	6600021		660	1	1.1	1.5

Comments on QC statistics :

Air pressure

1. Technocean Argos buoy WMO **4400835** and Metocean Iridium buoys WMO **4400626**, **4400725** and **6300554** reported many wrong pressure values onto the GTS before the transmission was stopped for this parameter.
2. Metocean Iridium buoy WMO **4400776** reported some wrong pressure values onto the GTS when it was ashore in Ireland. The data transmission has been stopped for it.
3. Metocean Iridium buoys WMO **4400551**, **4400685**, **4400869**, **4400875**, **6200532**, **6200697** and **6300552** reported some wrong pressure values onto the GTS but measurements became right later. Although some of them already reported dubious values in January, the GTS data transmission was not discontinued for them.

Air temperature

4. Air temperature values reported by Spanish buoy WMO **1300131** seem 2°C too low since they appear back onto the GTS in mid-January.

Wind

5. Wind direction data reported by Spanish buoy WMO **6100196** became dubious on 24 February. Odd wind speed values seem having also been sent onto the GTS for this buoy during the month.
6. The transmission of wind data onto the GTS was stopped on 7th February for Spanish moored buoy WMO **6100417**.

Monthly QC statistics and other data quality control tools are available on line at :
<http://www.meteo.shom.fr/qctools/>

The working area of the E-SURFMAR website is open at <http://esurfmar.meteo.fr/wikisurf-wa/> . Ask the E-SURFMAR Programme Manager Pierre.Blouch@meteo.fr for the password in case you forgot it. Graphs of system

**E-SURFMAR DB Monthly Report
February 2013**

performances may be displayed/downloaded at http://esurfmar.meteo.fr/doc/r/surfmar/others/e-surfmar_monitoring.pdf.