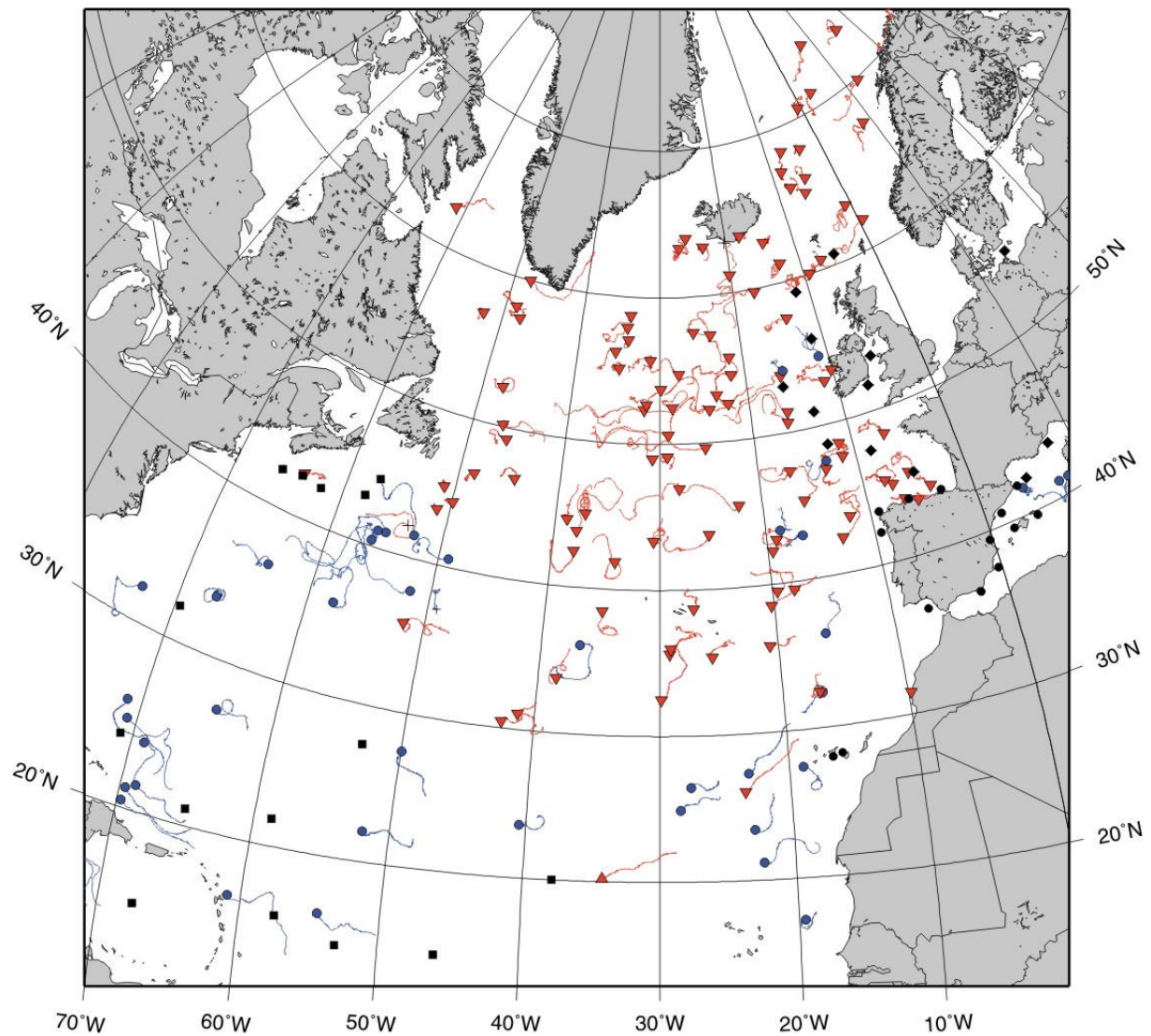
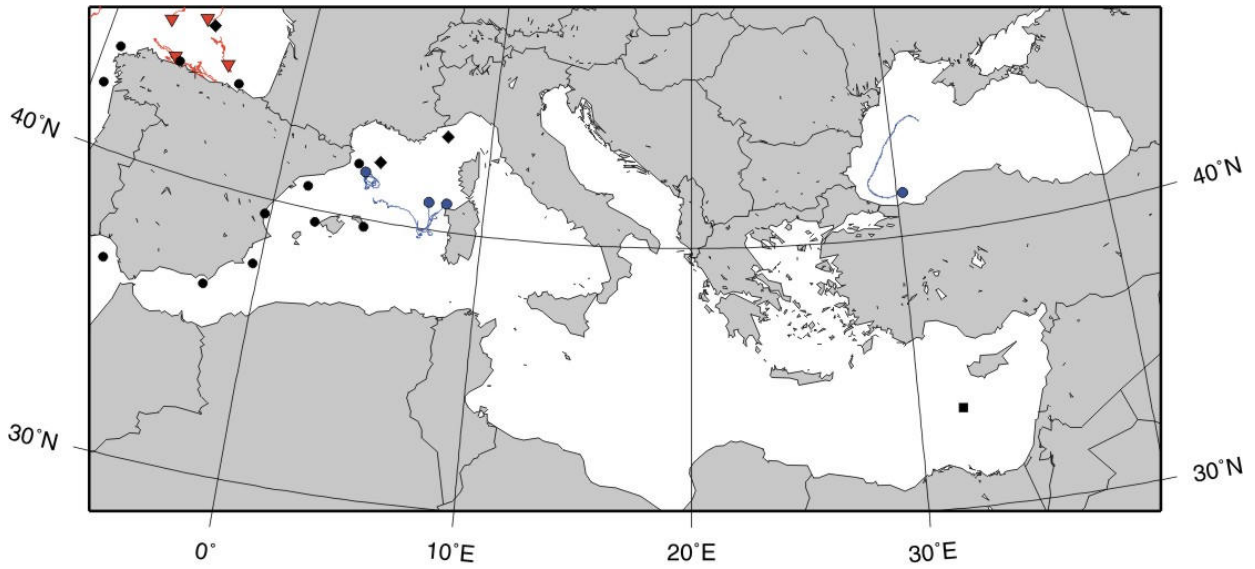


DATA BUOY MONTHLY REPORT

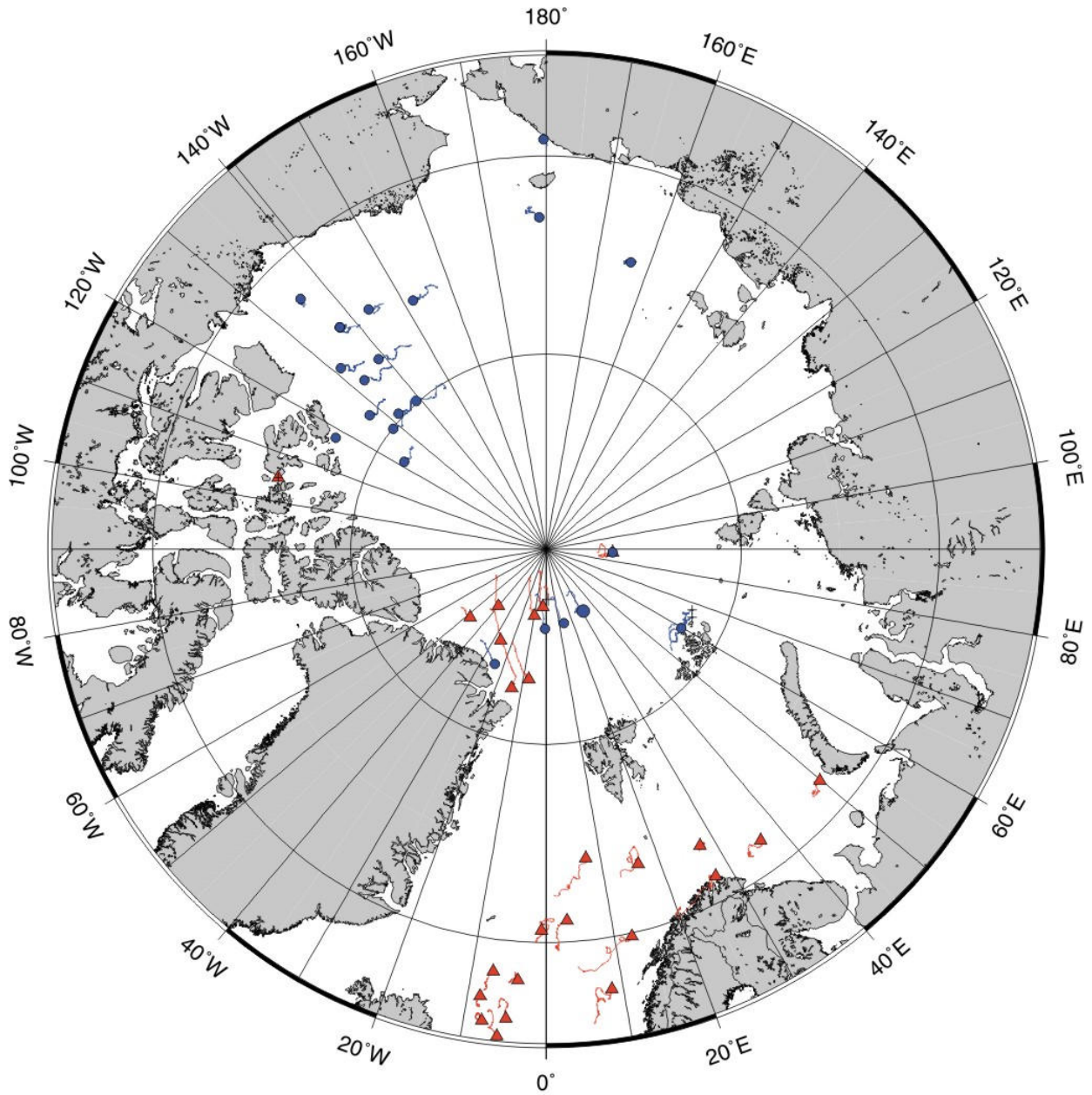
June 2013



June 2013 - Operating data buoys in the North Atlantic
Drifting buoy trajectories: E-SURFMAR (red), others (blue)
Moored buoy positions (black)



June 2013 - Operating data buoys in the Mediterranean Sea
Drifting buoy trajectories and moored buoy positions



June 2013 - Drifting buoy trajectories in Arctic Ocean and adjacent seas: E-SURFMAR (red), others (blue)

DRIFTING BUOYS

Network status

By the end of June, **113 Drifting buoys**, reporting air pressure or wind at least onto the GTS, were in operation in the frame of E-SURFMAR. Out of these, 86 were E-SURFMAR funded Iridium SVP-Bs, including 4 in the Arctic and 12 HRSST-2 buoys. These latter are fitted with accurate digital SST probes. The remaining buoys were: one ICEB buoy in the Arctic, one Argos and 24 Iridium drifters owned by NOAA and upgraded with barometers by E-SURFMAR, and one Iridium drifter operated by Environment Canada.

No new buoys were deployed in June but three buoys (WMO 4400725, 6300551 and 6300642) were rehabilitated on June 12th after noticing their pressure measurements were reliable back.

Information about the availability of buoys for future deployments may be get from the E-SURFMAR wikisite (working area) at: http://esurfmar.meteo.fr/wikisurf-wa/index.php/Availability_of_drifting_buoys

Besides E-SURFMAR buoys, 44 drifting buoys were reporting at least air pressure or wind observations from the EUCOS area of interest. Out of these, 12 were reporting Sea Surface Salinity, some in the frame of Spurs/Strasse campaign (validation of SMOS and Aquarius remote SSS measurements) and 4 were operating in the frame of HyMeX in the Mediterranean Sea.

Drifting buoys - New deployments

| WMO | Telcom | Typ | Ow | Dep_Date | DepLat | DepLon | From | Comment |
|-----|--------|-----|----|----------|--------|--------|------|---------|
|-----|--------|-----|----|----------|--------|--------|------|---------|

None during the month

Operating drifting buoys in North Atlantic by the end of the month

| WMO | Telcom | Typ | Ow | nobs | Wi | AT | AP | dP | ST | Wa | Ws | Dr | Sb | U | SS | O | Start_end | Lat | Lon | Age |
|---------|----------|-----|----|------|----|----|----|----|----|----|----|----|----|---|----|---|-----------|-------|--------|-----|
| 2500615 | 13409520 | MIB | EU | 720 | - | - | X | X | - | - | - | X | - | - | - | T | 0106-3006 | 84.76 | -48.28 | 659 |
| 2500617 | 11540100 | MSB | EU | 720 | - | - | X | X | - | - | - | X | - | - | - | T | 0106-3006 | 86.54 | -9.95 | 294 |
| 2500622 | 11540110 | MSB | EU | 720 | - | - | X | X | - | - | - | X | - | - | - | T | 0106-3006 | 86.58 | 87.36 | 299 |
| 2600556 | 11549180 | MSB | EU | 720 | - | - | X | X | - | - | - | X | - | - | - | T | 0106-3006 | 84.75 | -26.67 | 280 |
| 2600557 | 11544090 | MSB | EU | 719 | - | - | X | X | - | - | - | X | - | - | - | T | 0106-3006 | 82.64 | -14.02 | 282 |
| 4400546 | 11160640 | MSB | EU | 720 | - | - | X | X | X | - | - | X | - | - | - | T | 0106-3006 | 49.22 | -46.11 | 103 |
| 4400548 | 11160660 | MSB | EU | 720 | - | - | X | X | X | - | - | X | - | - | - | T | 0106-3006 | 52.59 | -47.79 | 102 |
| 4400549 | 11025170 | MSB | EU | 720 | - | - | X | X | X | - | - | X | - | - | - | T | 0106-3006 | 54.74 | -27.75 | 511 |
| 4400550 | 11545160 | MSB | E2 | 720 | - | - | X | X | X | - | - | X | - | - | - | T | 0106-3006 | 50.60 | -29.09 | 103 |
| 4400551 | 11027150 | MSB | EU | 720 | - | - | X | X | - | - | - | X | - | - | - | T | 0106-3006 | 38.48 | -35.04 | 511 |
| 4400602 | 11468700 | MSB | UP | 720 | - | - | X | X | X | - | - | X | - | - | - | T | 0106-3006 | 56.24 | -35.43 | 101 |
| 4400603 | 11540410 | MSB | UP | 720 | - | - | X | X | X | - | - | X | - | - | - | T | 0106-3006 | 53.85 | -16.00 | 273 |
| 4400604 | 11797230 | MSB | E2 | 720 | - | - | X | X | X | - | - | X | - | - | - | T | 0106-3006 | 46.75 | -44.55 | 53 |
| 4400605 | 11473110 | MSB | EU | 720 | - | - | X | X | X | - | - | X | - | - | - | T | 0106-3006 | 50.15 | -46.81 | 51 |
| 4400606 | 11687410 | MSB | EU | 720 | - | - | X | X | X | - | - | X | - | - | - | T | 0106-3006 | 33.73 | -38.54 | 269 |
| 4400607 | 11474110 | MSB | EU | 720 | - | - | X | X | X | - | - | X | - | - | - | T | 0106-3006 | 43.81 | -37.90 | 52 |
| 4400611 | 11471110 | MSB | EU | 720 | - | - | X | X | X | - | - | X | - | - | - | T | 0106-3006 | 48.98 | -30.75 | 117 |
| 4400613 | 11475040 | MSB | EU | 720 | - | - | X | X | X | - | - | X | - | - | - | T | 0106-3006 | 44.31 | -49.93 | 117 |
| 4400616 | 11813550 | MSB | EU | 720 | - | - | X | X | X | - | - | X | - | - | - | T | 0106-3006 | 59.78 | -17.15 | 525 |
| 4400617 | 11474100 | MSB | EU | 720 | - | - | X | X | X | - | - | X | - | - | - | T | 0106-3006 | 43.57 | -51.22 | 116 |
| 4400622 | 11881820 | PSB | UP | 720 | - | - | X | X | - | - | - | X | - | - | - | T | 0106-3006 | 35.80 | -51.75 | 357 |
| 4400623 | 11167640 | MSB | EU | 720 | - | - | X | X | X | - | - | X | - | - | - | T | 0106-3006 | 53.19 | -23.56 | 229 |
| 4400624 | 11341110 | YSB | EU | 714 | - | - | X | X | X | - | - | X | - | - | - | T | 0106-3006 | 42.47 | -38.00 | 202 |
| 4400627 | 11028170 | MSB | EU | 720 | - | - | X | X | X | - | - | X | - | - | - | T | 0106-3006 | 48.36 | -6.64 | 451 |
| 4400629 | 11021160 | MSB | EU | 720 | - | - | X | X | X | - | - | X | - | - | - | T | 0106-3006 | 43.84 | -6.47 | 451 |
| 4400630 | 13015830 | MSB | EU | 720 | - | - | X | X | X | - | - | X | - | - | - | T | 0106-3006 | 42.23 | -19.54 | 396 |
| 4400683 | 12366460 | MSB | CA | 720 | - | - | X | X | X | - | - | X | - | - | - | O | 0106-3006 | 42.68 | -63.91 | 100 |
| 4400721 | 13805460 | MSB | EU | 720 | - | - | X | X | X | - | - | X | - | - | - | T | 0106-3006 | 31.09 | -41.36 | 396 |
| 4400723 | 10825630 | MSB | EU | 720 | - | - | X | X | X | - | - | X | - | - | - | T | 0106-3006 | 55.70 | -31.17 | 371 |
| 4400724 | 13300270 | MSB | EU | 720 | - | - | X | X | X | - | - | X | - | - | - | T | 0106-3006 | 57.08 | -33.93 | 372 |
| 4400725 | 11027170 | MSB | EU | 720 | - | - | X | X | X | - | - | X | - | - | - | T | 0106-3006 | 42.36 | -12.97 | 373 |

E-SURFMAR DB Monthly Report June 2013

| | | | | | | | | | | | | | | | | | | | | |
|---------|----------|-----|----|-----|---|---|---|---|---|---|---|---|---|---|---|---|-----------|-------|--------|-----|
| 4400726 | 11023190 | MSB | EU | 720 | - | - | X | X | X | - | - | X | - | - | - | T | 0106-3006 | 48.58 | -11.40 | 372 |
| 4400728 | 11020190 | MSB | EU | 720 | - | - | X | X | X | - | - | X | - | - | - | T | 0106-3006 | 50.68 | -16.13 | 373 |
| 4400730 | 11846540 | MSB | E2 | 720 | - | - | X | X | - | - | X | - | - | - | - | T | 0106-3006 | 46.93 | -28.07 | 350 |
| 4400740 | 11883820 | PSB | UP | 686 | - | - | X | X | X | - | - | X | - | - | - | T | 0106-3006 | 30.45 | -42.60 | 358 |
| 4400741 | 11688230 | MSB | EU | 720 | - | - | X | X | X | - | - | X | - | - | - | T | 0106-3006 | 41.88 | -34.15 | 282 |
| 4400746 | 13357510 | MSB | EU | 524 | - | - | X | X | X | - | - | X | - | - | - | T | 0106-3006 | 57.57 | -13.79 | 570 |
| 4400760 | 11880820 | PSB | UP | 720 | - | - | X | X | X | - | - | X | - | - | - | T | 0106-3006 | 52.53 | -22.33 | 356 |
| 4400761 | 11883770 | PSB | UP | 720 | - | - | X | X | X | - | - | X | - | - | - | T | 0106-3006 | 60.65 | -7.16 | 356 |
| 4400762 | 11244970 | YSB | EU | 716 | - | - | X | X | X | - | - | X | - | - | - | T | 0106-3006 | 49.68 | -25.19 | 197 |
| 4400763 | 11683410 | MSB | EU | 720 | - | - | X | X | X | - | - | X | - | - | - | T | 0106-3006 | 52.35 | -31.76 | 117 |
| 4400764 | 11688400 | MSB | EU | 720 | - | - | X | X | X | - | - | X | - | - | - | T | 0106-3006 | 46.52 | -48.54 | 94 |
| 4400765 | 11685410 | MSB | EU | 720 | - | - | X | X | X | - | - | X | - | - | - | T | 0106-3006 | 45.16 | -51.08 | 94 |
| 4400767 | 11919510 | MSB | EU | 720 | - | - | X | X | X | - | - | X | - | - | - | T | 0106-3006 | 38.55 | -20.26 | 521 |
| 4400770 | 11798230 | MSB | E2 | 720 | - | - | X | X | X | - | - | X | - | - | - | T | 0106-3006 | 45.05 | -37.19 | 129 |
| 4400771 | 60507000 | MSB | E2 | 720 | - | - | X | X | X | - | - | X | - | - | - | T | 0106-3006 | 52.46 | -28.59 | 129 |
| 4400772 | 11544410 | MSB | UP | 720 | - | - | X | X | X | - | - | X | - | - | - | T | 0106-3006 | 51.36 | -15.99 | 347 |
| 4400774 | 11460700 | MSB | UP | 720 | - | - | X | X | X | - | - | X | - | - | - | T | 0106-3006 | 45.56 | -22.30 | 348 |
| 4400775 | 11540170 | MSB | E2 | 720 | - | - | X | X | X | - | - | X | - | - | - | T | 0106-3006 | 53.74 | -29.87 | 347 |
| 4400777 | 11885820 | PSB | UP | 720 | - | - | X | X | X | - | - | X | - | - | - | T | 0106-3006 | 52.25 | -24.45 | 344 |
| 4400778 | 11463700 | MSB | UP | 720 | - | - | X | X | X | - | - | X | - | - | - | T | 0106-3006 | 43.66 | -11.92 | 345 |
| 4400779 | 11885820 | PSB | UP | 720 | - | - | X | X | - | - | X | - | - | - | - | T | 0106-3006 | 54.45 | -21.66 | 345 |
| 4400780 | 11880840 | PSB | UP | 720 | - | - | X | X | X | - | - | X | - | - | - | T | 0106-3006 | 55.66 | -21.67 | 345 |
| 4400844 | 37533 | TSB | UP | 711 | - | - | X | X | X | - | - | X | - | - | - | L | 0106-3006 | 20.17 | -34.23 | 794 |
| 4400864 | 13614150 | MSB | EU | 720 | - | - | X | X | X | - | - | X | - | - | - | T | 0106-3006 | 44.17 | -3.82 | 506 |
| 4400865 | 11022610 | MSB | EU | 720 | - | - | X | X | X | - | - | X | - | - | - | T | 0106-3006 | 42.97 | -19.10 | 497 |
| 4400866 | 11020180 | MSB | EU | 720 | - | - | X | X | X | - | - | X | - | - | - | T | 0106-3006 | 52.87 | -11.25 | 496 |
| 4400867 | 11022740 | MSB | EU | 720 | - | - | X | X | X | - | - | X | - | - | - | T | 0106-3006 | 38.70 | -27.04 | 496 |
| 4400868 | 11794230 | MSB | E2 | 718 | - | - | X | X | X | - | - | X | - | - | - | T | 0106-3006 | 44.58 | -38.92 | 54 |
| 4400869 | 11026040 | MSB | EU | 720 | - | - | X | X | X | - | - | X | - | - | - | T | 0106-3006 | 35.87 | -20.73 | 487 |
| 4400871 | 11025180 | MSB | EU | 720 | - | - | X | X | X | - | - | X | - | - | - | T | 0106-3006 | 63.34 | -0.89 | 485 |
| 4400872 | 11027700 | MSB | EU | 720 | - | - | X | X | X | - | - | X | - | - | - | T | 0106-3006 | 45.00 | -7.25 | 471 |
| 4400873 | 11022600 | MSB | EU | 720 | - | - | X | X | X | - | - | X | - | - | - | T | 0106-3006 | 47.70 | -11.33 | 471 |
| 4400875 | 11021610 | MSB | EU | 720 | - | - | X | X | X | - | - | X | - | - | - | T | 0106-3006 | 35.36 | -25.61 | 471 |
| 4800662 | 10822620 | MSB | EU | 720 | - | - | X | X | X | - | - | X | - | - | - | T | 0106-3006 | 55.08 | -34.86 | 324 |
| 4800663 | 10822640 | MSB | EU | 720 | - | - | X | X | X | - | - | X | - | - | - | T | 0106-3006 | 52.67 | -31.51 | 324 |
| 6200511 | 11026160 | MSB | EU | 720 | - | - | X | X | - | - | X | - | - | - | - | T | 0106-3006 | 31.44 | -9.81 | 482 |
| 6200512 | 11687230 | MSB | EU | 720 | - | - | X | X | X | - | - | X | - | - | - | T | 0106-3006 | 39.48 | -19.60 | 54 |
| 6200514 | 60203700 | MSB | E2 | 720 | - | - | X | X | X | - | - | X | - | - | - | T | 0106-3006 | 57.30 | -23.69 | 129 |
| 6200515 | 11795230 | MSB | E2 | 720 | - | - | X | X | X | - | - | X | - | - | - | T | 0106-3006 | 49.13 | -29.23 | 129 |
| 6200516 | 11475100 | MSB | EU | 720 | - | - | X | X | X | - | - | X | - | - | - | T | 0106-3006 | 39.49 | -18.08 | 55 |
| 6200520 | 13611180 | MSB | EU | 720 | - | - | X | X | X | - | - | X | - | - | - | T | 0106-3006 | 26.05 | -23.48 | 509 |
| 6200521 | 11688060 | MSB | EU | 758 | - | - | X | X | X | - | - | X | - | - | - | T | 0106-3006 | 47.40 | -16.81 | 284 |
| 6200522 | 11680430 | MSB | EU | 720 | - | - | X | X | X | - | - | X | - | - | - | T | 0106-3006 | 45.45 | -5.51 | 283 |
| 6200531 | 11548410 | MSB | UP | 720 | - | - | X | X | X | - | - | X | - | - | - | T | 0106-3006 | 45.31 | -15.91 | 263 |
| 6200532 | 11566230 | MSB | UP | 720 | - | - | X | X | X | - | - | X | - | - | - | T | 0106-3006 | 61.28 | -12.84 | 262 |
| 6200553 | 11165650 | MSB | EU | 720 | - | - | X | X | X | - | - | X | - | - | - | T | 0106-3006 | 63.34 | -27.14 | 99 |
| 6200554 | 11027160 | MSB | EU | 707 | - | - | X | X | X | - | - | X | - | - | - | T | 0106-3006 | 35.61 | -29.18 | 481 |
| 6200556 | 11021170 | MSB | EU | 720 | - | - | X | X | X | - | - | X | - | - | - | T | 0106-3006 | 32.41 | -17.00 | 481 |
| 6200678 | 11029050 | MSB | EU | 720 | - | - | X | X | X | - | - | X | - | - | - | T | 0106-3006 | 63.97 | -26.04 | 498 |
| 6200679 | 11684400 | MSB | EU | 720 | - | - | X | X | X | - | - | X | - | - | - | T | 0106-3006 | 53.46 | -10.13 | 97 |
| 6200680 | 11166640 | MSB | EU | 720 | - | - | X | X | X | - | - | X | - | - | - | T | 0106-3006 | 57.56 | -25.76 | 226 |
| 6200681 | 11168640 | MSB | EU | 720 | - | - | X | X | X | - | - | X | - | - | - | T | 0106-3006 | 59.99 | -47.77 | 227 |
| 6200684 | 11882820 | PSB | UP | 720 | - | - | X | X | X | - | - | X | - | - | - | T | 0106-3006 | 67.43 | 8.48 | 353 |
| 6200685 | 11461700 | MSB | UP | 720 | - | - | X | X | X | - | - | X | - | - | - | T | 0106-3006 | 63.33 | -23.54 | 354 |
| 6200686 | 11845450 | MSB | E2 | 720 | - | - | X | X | - | - | X | - | - | - | - | T | 0106-3006 | 57.91 | -34.12 | 352 |
| 6200687 | 11349100 | YSB | EU | 718 | - | - | X | X | X | - | - | X | - | - | - | T | 0106-3006 | 60.03 | -9.27 | 206 |
| 6200695 | 60408990 | MSB | E2 | 711 | - | - | X | X | X | - | - | X | - | - | - | T | 0106-3006 | 43.74 | -25.36 | 55 |
| 6200712 | 11799220 | MSB | E2 | 718 | - | - | X | X | X | - | - | X | - | - | - | T | 0106-3006 | 43.37 | -30.59 | 55 |
| 6200713 | 11246980 | YSB | EU | 716 | - | - | X | X | X | - | - | X | - | - | - | T | 0106-3006 | 35.98 | -29.07 | 201 |
| 6200714 | 11240980 | YSB | EU | 714 | - | - | X | X | X | - | - | X | - | - | - | T | 0106-3006 | 32.50 | -29.88 | 198 |
| 6300551 | 11547410 | MSB | UP | 720 | - | - | X | X | X | - | - | X | - | - | - | T | 0106-3006 | 71.58 | 36.40 | 341 |
| 6300552 | 11548400 | MSB | UP | 720 | - | - | X | X | X | - | - | X | - | - | - | T | 0106-3006 | 74.09 | 7.36 | 340 |
| 6300635 | 11477140 | MSB | EU | 720 | - | - | X | X | X | - | - | X | - | - | - | T | 0106-3006 | 73.28 | 16.27 | 263 |
| 6300639 | 11471050 | MSB | EU | 720 | - | - | X | X | X | - | - | X | - | - | - | T | 0106-3006 | 72.95 | 27.43 | 234 |
| 6300642 | 11548080 | MSB | EU | 720 | - | - | X | X | X | - | - | X | - | - | - | T | 0106-3006 | 70.59 | -0.70 | 378 |
| 6400516 | 11473100 | MSB | EU | 721 | - | - | X | X | X | - | - | X | - | - | - | T | 0106-3006 | 71.05 | 3.22 | 264 |
| 6400518 | 11472110 | MSB | EU | 720 | - | - | X | X | X | - | - | X | - | - | - | T | 0106-3006 | 69.84 | 12.52 | 264 |
| 6400519 | 11547420 | MSB | UP | 720 | - | - | X | X | X | - | - | X | - | - | - | T | 0106-3006 | 62.92 | -14.45 | 58 |
| 6400520 | 11479040 | MSB | EU | 720 | - | - | X | X | X | - | - | X | - | - | - | T | 0106-3006 | 65.91 | -7.79 | 51 |
| 6400521 | 11470030 | MSB | EU | 720 | - | - | X | X | X | - | - | X | - | - | - | T | 0106-3006 | 68.40 | -7.16 | 49 |
| 6400522 | 11029150 | MSB | EU | 720 | - | - | X | X | X | - | - | X | - | - | - | T | 0106-3006 | 61.19 | -20.15 | 510 |
| 6400523 | 11757730 | MSB | UP | 720 | - | - | X | X | - | - | X | - | - | - | - | T | 0106-3006 | 71.25 | 27.40 | 398 |
| 6400524 | 10825640 | MSB | EU | 720 | - | - | X | X | X | - | - | X | - | - | - | T | 0106-3006 | 62.66 | -61.42 | 371 |
| 6400527 | 11549160 | MSB | UP | 720 | - | - | X | X | X | - | - | X | - | - | - | T | 0106-3006 | 56.98 | -52.47 | 291 |
| 6400606 | 11478100 | MSB | EU | 720 | - | - | X | X | X | - | - | X | - | - | - | T | 0106-3006 | 68.07 | -3.75 | 235 |
| 6400607 | 11479100 | MSB | EU | 720 | - | - | X | X | X | - | - | X | - | - | - | T | 0106-3006 | 65.23 | -5.78 | 235 |

E-SURFMAR DB Monthly Report June 2013

| | | | | | | | | | | | | | | | | | | | |
|---------|----------|--------|-----|---|---|---|---|---|---|---|---|---|---|---|---|-----------|-------|--------|-----|
| 6400608 | 11546430 | MSB UP | 720 | - | - | X | X | X | - | - | X | - | - | - | T | 0106-3006 | 62.01 | 0.51 | 86 |
| 6400609 | 11379950 | MSB EU | 720 | - | - | X | X | X | - | - | X | - | - | - | T | 0106-3006 | 66.16 | -4.91 | 50 |
| 6400619 | 11544440 | MSB UP | 720 | - | - | X | X | S | - | - | X | - | - | - | T | 0106-3006 | 63.68 | -17.77 | 149 |
| 6400620 | 11756730 | MSB UP | 720 | - | - | X | X | X | - | - | X | - | - | - | T | 0106-3006 | 57.33 | -47.85 | 395 |
| 6500591 | 11887820 | PSB UP | 720 | - | - | X | X | X | - | - | X | - | - | - | T | 0106-3006 | 58.05 | -48.67 | 343 |
| 6500592 | 11164650 | MSB EU | 720 | - | - | X | X | X | - | - | X | - | - | - | T | 0106-3006 | 58.72 | -33.77 | 227 |

----- Drifting buoys which ceased to be operational

| WMO | Telcom | Typ Ow | End_Date | Lat | Lon | Age | Cause |
|---------|----------|--------|----------|------|-------|-----|--------------------------------------|
| 2500616 | 11549100 | MSB EU | 20120611 | 87.4 | 2.4 | 275 | Arctic buoy - Stopped transmitting |
| 4400626 | 11814550 | MSB EU | 20130624 | 43.5 | -5.3 | 445 | Ashore in Spain |
| 4400684 | 12297120 | MSB CA | 20130620 | 42.0 | -53.4 | 88 | AP measurements failed |
| 6400623 | 11470040 | MSB EU | 20130624 | 67.1 | -8.4 | 44 | No pressure data from 24/06 to 02/07 |
| 6400661 | 11543430 | MSB UP | 20130610 | 63.4 | -20.2 | 123 | Ashore in Iceland |

----- Non-operating drifting buoys reporting GTS data

| WMO | Telcom | Typ Ow | nobs | Wi | AT | AP | dP | ST | Wa | Ws | Dr | Sb | U | SS | O | Start_end | Lat | Lon | Age |
|---------|----------|--------|------|----|----|----|----|----|----|----|----|----|---|----|---|-----------|-------|--------|-----|
| 4400684 | 12297120 | MSB CA | 719 | - | - | S | S | X | - | - | X | - | - | - | O | 0106-3006 | 42.01 | -53.41 | 98 |
| 6400623 | 11470040 | MSB EU | 720 | - | - | S | X | X | - | - | X | - | - | - | T | 0106-3006 | 67.10 | -8.40 | 50 |

----- Other operating drifting buoys into the EUCOS area of interest by the end of the month

| WMO | Telcom | Typ Ow | nobs | Wi | AT | AP | dP | ST | Wa | Ws | Dr | Sb | U | SS | O | Start_end | Lat | Lon |
|---------|----------|--------|------|----|----|----|----|----|----|----|----|----|---|----|---|-----------|-------|--------|
| 1300575 | 60210910 | LODY | 1364 | - | - | X | X | X | - | - | X | - | - | - | T | 0106-3006 | 4.49 | -13.36 |
| 1300577 | 114638 | LODY | 1268 | - | - | X | - | X | - | - | X | - | - | X | T | 0106-3006 | 23.59 | -40.51 |
| 1300600 | 43869 | AOML | 712 | - | - | X | X | - | - | - | X | - | - | - | L | 0106-3006 | 27.30 | -23.16 |
| 1300659 | 11910180 | UKMO | 720 | - | - | X | X | X | - | - | X | - | - | - | T | 0106-3006 | 32.35 | -16.80 |
| 1300660 | 11022040 | UKMO | 720 | - | - | X | X | X | - | - | X | - | - | - | T | 0106-3006 | 24.90 | -28.41 |
| 1300661 | 11912280 | UKMO | 717 | - | - | X | X | X | - | - | X | - | - | - | T | 0106-3006 | 26.47 | -27.59 |
| 1300662 | 11098800 | UKMO | 720 | - | - | X | X | X | - | - | X | - | - | - | T | 0106-3006 | 23.44 | -22.90 |
| 1300664 | 11090810 | UKMO | 719 | - | - | X | X | X | - | - | X | - | - | - | T | 0106-3006 | 27.51 | -18.94 |
| 1300665 | 11091810 | UKMO | 715 | - | - | X | X | X | - | - | X | - | - | - | T | 0106-3006 | 21.19 | -22.32 |
| 1300666 | 11099800 | UKMO | 706 | - | - | X | X | X | - | - | X | - | - | - | T | 0106-3006 | 17.16 | -19.58 |
| 1300898 | 60725400 | LODY | 1341 | - | - | X | X | X | - | - | X | - | - | X | T | 0106-3006 | 6.53 | -22.95 |
| 1300899 | 11977530 | CMM | 720 | - | - | X | X | X | - | - | X | - | - | X | T | 0106-3006 | 3.35 | -14.34 |
| 3100739 | 11544080 | CMM | 725 | - | - | X | X | X | - | - | X | - | - | S | T | 0106-3006 | 16.58 | -60.97 |
| 4100560 | 114550 | AOML | 717 | - | - | X | - | - | - | - | X | - | - | - | L | 0106-3006 | 41.14 | -55.17 |
| 4100562 | 114558 | AOML | 695 | - | - | X | - | X | - | - | X | - | - | - | L | 0106-3006 | 36.56 | -64.00 |
| 4100597 | 11542410 | CMM | 654 | - | - | X | X | X | - | - | X | - | - | - | T | 0106-3006 | 24.61 | -69.99 |
| 4100599 | 11546410 | CMM | 718 | - | - | X | X | X | - | - | X | - | - | - | T | 0106-3006 | 16.36 | -54.46 |
| 4100612 | 123247 | AOML | 715 | - | - | X | X | X | - | - | X | - | - | - | L | 0106-3006 | 33.45 | -67.11 |
| 4100616 | 101618 | AOML | 714 | - | - | X | X | X | - | - | X | - | - | - | L | 0106-3006 | 36.09 | -36.73 |
| 4100633 | 114634 | LODY | 1407 | - | - | X | - | X | - | - | X | - | - | X | T | 0106-3006 | 27.51 | -49.96 |
| 4100634 | 114632 | LODY | 1400 | - | - | X | - | X | - | - | X | - | - | X | T | 0106-3006 | 21.98 | -52.01 |
| 4100637 | 13801460 | CMM | 720 | - | - | X | X | X | - | - | X | - | - | - | T | 0106-3006 | 21.12 | -69.60 |
| 4100638 | 10827640 | CMM | 720 | - | - | X | X | X | - | - | X | - | - | - | T | 0106-3006 | 23.89 | -69.06 |
| 4100695 | 12724770 | CMM | 718 | - | - | X | X | X | - | - | - | - | - | - | T | 0106-3006 | 50.36 | -13.45 |
| 4100735 | 10729990 | CMM | 720 | - | - | X | X | X | - | - | X | - | - | X | T | 0106-3006 | 21.43 | -68.87 |
| 4100739 | 11912120 | UKMO | 720 | - | - | X | X | X | - | - | X | - | - | - | T | 0106-3006 | 27.14 | -64.46 |
| 4100929 | 101720 | AOML | 595 | - | - | X | X | X | - | - | X | - | - | - | L | 0506-3006 | 41.10 | -55.90 |
| 4100930 | 101719 | AOML | 555 | - | - | X | X | X | - | - | X | - | - | - | L | 0706-3006 | 40.54 | -49.13 |
| 4100932 | ?? | ?? | 297 | - | - | X | X | X | - | - | X | - | - | - | L | 1006-3006 | 30.48 | -42.10 |
| 4100960 | 93006 | AOML | 668 | - | - | X | - | X | - | - | X | - | - | - | L | 0106-3006 | 43.01 | -16.59 |
| 4400561 | 101659 | AOML | 589 | - | - | X | X | X | - | - | X | - | - | - | L | 0506-3006 | 40.38 | -56.19 |
| 4400924 | 126481 | AOML | 711 | - | - | X | X | X | - | - | X | - | - | - | L | 0106-3006 | 41.49 | -52.63 |
| 4400926 | 101723 | AOML | 647 | - | - | X | X | X | - | - | X | - | - | - | L | 0306-3006 | 35.78 | -57.83 |
| 6100523 | 10209530 | CMM | 715 | - | - | X | X | X | - | - | X | - | - | - | T | 0106-3006 | 41.67 | 4.06 |
| 6100525 | 10452500 | CMM | 620 | - | - | X | X | X | - | - | X | - | - | X | T | 0106-3006 | 40.97 | 7.30 |
| 6100529 | 49767 | CMM | 690 | - | - | X | X | X | - | - | X | - | - | - | T | 0106-3006 | 41.00 | 8.18 |
| 6100689 | 11248940 | MARL | 713 | - | - | X | X | X | - | - | X | - | - | - | T | 0106-3006 | 41.57 | 30.30 |
| 6200501 | 11540090 | CMM | 326 | - | - | X | X | X | - | - | X | - | - | X | T | 0106-3006 | 36.26 | -15.93 |

E-SURFMAR DB Monthly Report June 2013

| | | | | | | | | | | | | | | | | | | |
|---------|----------|-----|-----|---|---|---|---|---|---|---|---|---|---|---|---|-----------|-------|--------|
| 6200502 | 11758720 | CMM | 288 | - | - | X | X | X | - | - | X | - | - | X | T | 0106-3006 | 43.56 | -18.63 |
| 6200503 | 11758700 | CMM | 720 | - | - | X | X | X | - | - | X | - | - | X | T | 0106-3006 | 47.62 | -13.05 |
| 6200504 | 11972540 | CMM | 552 | - | - | X | X | X | - | - | X | - | - | X | T | 0106-3006 | 54.15 | -15.65 |
| 6200507 | 11288550 | CMM | 717 | - | - | X | X | X | - | - | X | - | - | - | T | 0106-3006 | 47.09 | -13.22 |
| 6200508 | 10759040 | CMM | 716 | - | - | X | X | X | - | - | X | - | - | - | T | 0106-3006 | 45.38 | -7.87 |
| 6200509 | 60343390 | CMM | 689 | - | - | X | X | X | - | - | X | - | - | X | T | 0106-3006 | 54.55 | -11.17 |

----- Abbreviations -----

WMO : WMO id.
 Argos : Argos id.
 Typ : Buoy type
 - first character : Manufacturer (C = ConMar , M = Metocean, P = Pacific Gyre
 T = Technocean, Y = Marlin-Yug...)
 - second character : Main type (F = FGGE, I = ICEB, S = SVP)
 - third character : Sub type (B = barometer buoy, W = Wind buoy,
 S = Salinity buoy)

Ow : Buoy owner (country code or EU for EUCOS, E2 for HRSST-2 buoys, UP for upgraded buoys)
 Owner : Buoy owner for non EUCOS buoys
 Nobs : number of GTS reports received at Meteo-France
 Parameters (X = OK, S = stopped, - = not measured) :
 Wi : Wind
 AT : Air Temperature
 AP : Air Pressure
 dP : Air pressure tendency
 ST : Sea surface Temperature
 Wa : Wave period and height
 Ws : Wave spectra
 Dr : Drogue presence
 Sb : Subsurface temperature
 U : Relative humidity
 SS : Sea surface Salinity

O : Origin of the reports (T = Argos Toulouse, L = Argos Largo, O = Other)
 Start_end : first and last dates of the month for which GTS data were received at Meteo-France
 Lat : Latitude of the latest position
 Lon : Longitude of the latest position
 Age : Age of the buoy (days)

DepDate : Date of deployment
 DepLat : Latitude of deployment
 Dep Lon : Longitude of Deployment
 From : Harbour of departure

Definition : An operating drifting buoy is a buoy providing at least air pressure or wind (direction and velocity) data.

MOORED BUOYS

No data have been received from Greek moored buoys since the 1st of July 2012.

Operating EGOS moored buoys (K-pattern)

| WMO | Name | nobs | Wi | AT | AP | dP | ST | Wa | Ws | Dr | Sb | U | SS | O | Start_end | Lat | Lon |
|----------------|-------------|------------|----------|----------|----------|----------|----------|----------|----------|----|----|----------|----|----------|------------------|--------------|---------------|
| 6100001 | Cote d'Azur | 643 | X | X | X | X | X | X | X | - | - | X | - | T | 0106-3006 | 43.40 | 7.80 |
| 6100002 | Lion | 720 | X | X | X | X | - | X | X | - | - | X | - | T | 0106-3006 | 42.10 | 4.70 |
| 6200001 | Gascogne | 720 | X | X | X | X | X | X | X | - | - | X | - | O | 0106-3006 | 45.30 | -5.00 |
| 6200029 | K1 | 719 | X | X | X | X | X | X | - | - | - | X | - | O | 0106-3006 | 48.70 | -12.50 |
| 6200081 | K2 | 717 | X | X | X | X | X | X | - | - | - | X | - | O | 0106-3006 | 51.00 | -13.20 |
| 6200090 | M1 | - | - | - | - | - | - | - | - | - | - | - | - | - | - | 53.10 | -11.20 |
| 6200091 | M2 | 714 | X | X | X | - | X | - | - | - | - | X | X | O | 0106-3006 | 53.50 | -5.40 |
| 6200092 | M3 | - | - | - | - | - | - | - | - | - | - | - | - | - | - | 51.20 | -10.50 |
| 6200093 | M4 | 561 | X | X | X | - | X | X | - | - | - | X | - | O | 0706-3006 | 54.70 | -9.10 |
| 6200094 | M5 | 716 | X | X | X | - | X | - | - | - | - | X | - | O | 0106-3006 | 51.70 | -6.70 |
| 6200095 | M6 | 719 | X | X | X | X | X | X | - | - | - | X | - | O | 0106-3006 | 53.10 | -15.90 |
| 6200105 | K4 | 707 | X | X | X | X | X | X | - | - | - | X | - | O | 0106-3006 | 55.80 | -11.40 |
| 6200108 | K3 | - | - | - | - | - | - | - | - | - | - | - | - | - | - | 53.50 | -19.50 |
| 6200163 | Brittany | 718 | X | X | X | X | X | X | X | - | - | X | - | O | 0106-3006 | 47.50 | -8.40 |
| 6400045 | K5 | 700 | X | X | X | X | X | X | - | - | - | X | - | O | 0106-3006 | 59.10 | -11.70 |
| 6400046 | K7 | 716 | X | X | X | - | X | - | - | - | - | X | - | O | 0106-3006 | 60.70 | -5.20 |

Comments:

- EUCOS moored buoys are presented in bold characters.

Operating EGOS moored buoys (Spanish SeaWatch and WaveScan)

| WMO | Name | nobs | Wi | AT | AP | dP | ST | Wa | Ws | Dr | Sb | U | SS | O | Start_end | Lat | Lon |
|----------------|--------------------|------------|----------|----------|----------|----|----------|----------|----|----|----|---|----------|----------|------------------|--------------|--------------|
| 1300130 | Gran Canaria | 706 | X | X | X | - | S | X | - | - | - | - | S | O | 0106-3006 | 28.18 | -15.82 |
| 1300131 | Tenerife Sur | 676 | X | X | X | - | X | X | - | - | - | - | X | O | 0106-3006 | 28.00 | -16.58 |
| 6100196 | C. Begur | 708 | X | X | X | - | - | - | - | - | - | - | - | O | 0106-3006 | 41.92 | 3.65 |
| 6100197 | Mahon | 708 | X | X | X | - | - | X | - | - | - | - | - | O | 0106-3006 | 39.72 | 4.42 |
| 6100198 | C. de Gata | 707 | X | X | X | - | X | X | - | - | - | - | X | O | 0106-3006 | 36.57 | -2.33 |
| 6100280 | Tarragona | 707 | X | X | X | - | X | X | - | - | - | - | X | O | 0106-3006 | 40.77 | 1.47 |
| 6100281 | Valencia | 708 | X | X | X | - | X | X | - | - | - | - | X | O | 0106-3006 | 39.47 | -0.27 |
| 6100417 | C. de Palos | 700 | X | X | X | - | X | X | - | - | - | - | X | O | 0106-3006 | 37.65 | -0.32 |
| 6100430 | Dragonera | 709 | X | X | X | - | X | X | - | - | - | - | - | O | 0106-3006 | 39.56 | 2.11 |
| 6200024 | Bilbao-Visc. | 708 | X | X | X | - | X | X | - | - | - | - | X | O | 0106-3006 | 43.63 | -3.03 |
| 6200025 | C. de Penas | 707 | X | - | X | - | X | X | - | - | - | - | X | O | 0106-3006 | 43.73 | -6.17 |
| 6200082 | E. de Bares | - | - | - | - | - | - | - | - | - | - | - | - | - | - | 44.13 | -7.69 |
| 6200083 | Villano-Sis. | 712 | X | X | X | - | X | X | - | - | - | - | X | O | 0106-3006 | 43.48 | -9.22 |
| 6200084 | C. Silleiro | 707 | X | X | X | - | X | X | - | - | - | - | X | O | 0106-3006 | 42.12 | -9.43 |
| 6200085 | G. de Cadiz | 703 | X | X | X | - | X | X | - | - | - | - | - | O | 0106-3006 | 36.48 | -6.97 |
| 0 | Santander | - | - | - | - | - | - | - | - | - | - | - | - | - | - | 43.84 | -3.77 |

Comments:

- The EUCOS buoy is presented in bold characters.

Operating ISPRA moored buoys (Italy)

| WMO | Name | nobs | Wi | AT | AP | dP | ST | Wa | Ws | Dr | Sb | U | SS | O | Start_end | Lat | Lon |
|---------|------|------|----|----|----|----|----|----|----|----|----|---|----|---|-----------|-------|-------|
| 6100207 | | 1036 | - | - | - | - | X | X | - | - | - | - | - | O | 0106-3006 | 37.44 | 15.15 |
| 6100208 | | - | - | - | - | - | - | - | - | - | - | - | - | - | - | 37.52 | 12.53 |
| 6100209 | | 491 | - | - | - | - | S | S | - | - | - | - | - | - | 0106-1106 | 38.26 | 13.33 |
| 6100210 | | 1261 | - | - | - | - | X | X | - | - | - | - | - | O | 0406-3006 | 39.02 | 17.22 |
| 6100211 | | 1424 | - | - | - | - | X | X | - | - | - | - | - | O | 0106-3006 | 39.45 | 15.92 |
| 6100212 | | - | - | - | - | - | - | - | - | - | - | - | - | - | - | 40.62 | 9.89 |
| 6100213 | | - | - | - | - | - | - | - | - | - | - | - | - | - | - | 40.55 | 8.11 |
| 6100214 | | 1432 | - | - | - | - | X | X | - | - | - | - | - | O | 0106-3006 | 40.87 | 12.95 |

**E-SURFMAR DB Monthly Report
June 2013**

| | | | | | | | | | | | | | | | | | |
|---------|------|---|---|---|---|---|---|---|---|---|---|---|---|---|-----------|-------|-------|
| 6100215 | 1431 | - | - | - | - | X | X | - | - | - | - | - | - | O | 0106-3006 | 40.98 | 17.38 |
| 6100216 | 1184 | - | - | - | - | X | X | - | - | - | - | - | - | O | 0106-3006 | 42.24 | 11.55 |
| 6100218 | 339 | - | - | - | - | X | X | - | - | - | - | - | - | O | 0106-2906 | 43.83 | 13.72 |
| 6100219 | 1431 | - | - | - | - | X | X | - | - | - | - | - | - | O | 0106-3006 | 43.93 | 9.83 |
| 6100220 | 1376 | - | - | - | - | X | X | - | - | - | - | - | - | O | 0106-3006 | 45.33 | 12.52 |
| 6100221 | - | - | - | - | - | - | - | - | - | - | - | - | - | - | - | 39.12 | 9.40 |

Operating POSEIDON moored buoys (Greece)

| WMO | Name | nobs | Wi | AT | AP | dP | ST | Wa | Ws | Dr | Sb | U | SS | O | Start_end | Lat | Lon |
|---------|------|------|----|----|----|----|----|----|----|----|----|---|----|---|-----------|-------|-------|
| 6101000 | | | - | - | - | - | - | - | - | - | - | - | - | | | 39.10 | 24.50 |
| 6101001 | | | - | - | - | - | - | - | - | - | - | - | - | | | 37.60 | 23.60 |
| 6101002 | | | - | - | - | - | - | - | - | - | - | - | - | | | 37.00 | 22.10 |
| 6101003 | | | - | - | - | - | - | - | - | - | - | - | - | | | 40.00 | 24.70 |
| 6101004 | | | - | - | - | - | - | - | - | - | - | - | - | | | 39.10 | 25.80 |
| 6101005 | | | - | - | - | - | - | - | - | - | - | - | - | | | 37.50 | 25.50 |
| 6101006 | | | - | - | - | - | - | - | - | - | - | - | - | | | 36.30 | 25.50 |
| 6101007 | | | - | - | - | - | - | - | - | - | - | - | - | | | 35.80 | 24.90 |
| 6101008 | | | - | - | - | - | - | - | - | - | - | - | - | | | 36.80 | 21.60 |
| 6101009 | | | - | - | - | - | - | - | - | - | - | - | - | | | 38.00 | 20.60 |

Other European moored buoys

| WMO | Name | nobs | Wi | AT | AP | dP | ST | Wa | Ws | Dr | Sb | U | SS | O | Start_end | Lat | Lon |
|---------|------------------|------|----|----|----|----|----|----|----|----|----|---|----|---|-----------|-------|--------|
| 6100010 | Italia-1 | | - | - | - | - | - | - | - | - | - | - | - | | | 43.80 | 9.10 |
| 6200442 | PAP | | - | - | - | - | - | - | - | - | - | - | - | | | 49.00 | -16.40 |
| 6600021 | Arkona Becken | 702 | X | X | - | - | X | - | - | - | - | - | - | O | 0106-3006 | 54.90 | 13.90 |
| 6600022 | Oder Bank | | - | - | - | - | - | - | - | - | - | - | - | | | 54.10 | 14.20 |
| 6600024 | Darsser Schwelle | | - | - | - | - | - | - | - | - | - | - | - | | | 54.70 | 12.70 |

Offshore moored buoys in the western part of the EUCOS area

| WMO | Name | nobs | Wi | AT | AP | dP | ST | Wa | Ws | Dr | Sb | U | SS | O | Start_end | Lat | Lon |
|---------|---------------|------|----|----|----|----|----|----|----|----|----|---|----|---|-----------|-------|--------|
| 1300308 | East Atlantic | | - | - | - | - | - | - | - | - | - | - | - | | | 15.00 | -38.00 |
| 4100026 | | 342 | X | X | - | - | X | - | - | - | - | X | - | L | 0106-3006 | 11.49 | -38.40 |
| 4100040 | West Atlantic | 716 | X | X | X | X | X | X | - | - | - | X | - | O | 0106-3006 | 14.50 | -53.00 |
| 4100041 | Mid. Atlantic | 710 | X | X | X | X | X | X | - | - | - | X | - | O | 0106-3006 | 14.50 | -46.00 |
| 4100043 | Porto Rico | 699 | X | X | X | X | X | X | - | - | - | - | - | O | 0106-3006 | 21.00 | -65.00 |
| 4100044 | | 712 | X | X | X | X | X | X | - | - | - | X | - | O | 0106-3006 | 21.70 | -58.70 |
| 4100046 | | 717 | X | X | X | X | X | X | - | - | - | X | - | O | 0106-3006 | 23.90 | -70.90 |
| 4100047 | | | - | - | - | - | - | - | - | - | - | - | - | | | 27.50 | -71.50 |
| 4100048 | | 710 | X | X | X | X | X | X | - | - | - | X | - | O | 0106-3006 | 32.00 | -69.60 |
| 4100049 | | 716 | X | X | X | X | X | X | - | - | - | X | - | O | 0106-3006 | 27.50 | -53.00 |
| 4100139 | | 377 | X | X | X | - | X | - | - | - | - | X | - | L | 0106-3006 | 20.02 | -37.86 |
| 4100300 | Antilles | 701 | X | X | X | X | X | X | - | - | - | X | - | T | 0106-3006 | 15.85 | -57.47 |
| 4200059 | Caraibes | 711 | X | X | X | X | X | X | - | - | - | X | - | O | 0106-3006 | 15.00 | -67.50 |
| 4400008 | A Nantucket | | - | - | - | - | - | - | - | - | - | - | - | | | 40.50 | -69.40 |
| 4400011 | D Georges Bk | | - | - | - | - | - | - | - | - | - | - | - | | | 41.10 | -66.60 |
| 4400018 | SE Cape Cod | | - | - | - | - | - | - | - | - | - | - | - | | | 41.30 | -69.30 |
| 4400024 | NNE Channel | 691 | X | X | X | - | X | X | - | - | - | - | - | O | 0106-3006 | 42.30 | -65.90 |
| 4400137 | E Scotia Sl. | 712 | X | X | X | X | X | X | - | - | - | - | - | O | 0106-3006 | 42.30 | -62.00 |
| 4400138 | SW Gd Banks | | - | - | - | - | - | - | - | - | - | - | - | | | 44.30 | -53.60 |
| 4400139 | Beanquereau | 708 | X | X | X | X | X | X | - | - | - | - | - | O | 0106-3006 | 44.30 | -57.10 |
| 4400140 | Tail of Bk | | - | - | - | - | - | - | - | - | - | - | - | | | 43.80 | -51.70 |
| 4400141 | Larentian F | 714 | X | X | X | X | X | X | - | - | - | - | - | O | 0106-3006 | 43.00 | -58.00 |
| 4400150 | La Have Bk | 702 | X | S | X | X | X | X | - | - | - | - | - | O | 0106-3006 | 42.50 | -64.00 |

Buoy-QC statistics from Meteo-France model outputs

Datend : Date of the last value received on GTS
Recvd : Total number of values received on GTS
GE : Number of Gross Errors (excluded from bias and sd computations)
bias : Mean differences between observation values and co-located model output values
Std : Standard deviation of differences

Air Pressure (hPa), drifting buoys, June 2013

| Datend | WMO | Telcom | Recvd | GE | Bias | Std |
|-----------------|----------------|-----------------|--------------|------------|-------------|------------|
| 20130630 | 2500615 | 13409520 | 720 | 0 | -0.0 | 0.4 |
| 20130611 | 2500616 | 11549100 | 248 | 0 | 0.1 | 0.4 |
| 20130630 | 2500617 | 11540100 | 720 | 0 | -0.1 | 0.4 |
| 20130630 | 2500622 | 11540110 | 720 | 0 | -0.4 | 0.5 |
| 20130630 | 2600556 | 11549080 | 720 | 0 | 0.1 | 0.4 |
| 20130630 | 2600557 | 11544090 | 719 | 0 | -0.2 | 0.4 |
| 20130630 | 4400546 | 11160640 | 720 | 0 | -0.3 | 0.6 |
| 20130630 | 4400548 | 11160660 | 720 | 0 | -0.2 | 0.5 |
| 20130630 | 4400549 | 11025170 | 720 | 0 | -0.0 | 0.6 |
| 20130630 | 4400550 | 11545160 | 720 | 0 | 0.1 | 0.5 |
| 20130630 | 4400551 | 11027150 | 720 | 0 | -0.2 | 0.3 |
| 20130630 | 4400602 | 11468700 | 720 | 0 | -0.1 | 0.6 |
| 20130630 | 4400603 | 11540410 | 720 | 0 | -0.1 | 0.4 |
| 20130630 | 4400604 | 11797230 | 719 | 0 | -0.3 | 0.5 |
| 20130630 | 4400605 | 11473110 | 720 | 0 | -0.4 | 0.6 |
| 20130630 | 4400606 | 11687410 | 720 | 0 | -0.1 | 0.3 |
| 20130630 | 4400607 | 11474110 | 720 | 0 | -0.1 | 0.4 |
| 20130630 | 4400611 | 11471110 | 720 | 0 | -0.1 | 0.4 |
| 20130630 | 4400613 | 11475040 | 720 | 0 | -0.3 | 0.5 |
| 20130630 | 4400616 | 11813550 | 720 | 0 | -0.0 | 0.5 |
| 20130630 | 4400617 | 11474100 | 720 | 0 | -0.2 | 0.5 |
| 20130630 | 4400622 | 11881820 | 720 | 0 | 0.3 | 0.4 |
| 20130630 | 4400623 | 11167640 | 720 | 0 | 0.2 | 0.6 |
| 20130630 | 4400624 | 11341110 | 714 | 0 | 0.0 | 0.5 |
| 20130624 | 4400626 | 11814550 | 574 | 0 | -0.2 | 0.4 |
| 20130630 | 4400627 | 11028170 | 720 | 0 | 0.1 | 0.4 |
| 20130630 | 4400629 | 11021160 | 720 | 0 | -0.2 | 0.5 |
| 20130630 | 4400630 | 13015830 | 720 | 0 | -0.1 | 0.4 |
| 20130630 | 4400683 | 12366460 | 720 | 0 | 0.0 | 0.5 |
| 20130620 | 4400684 | 12297120 | 474 | 103 | -1.2 | 2.4 |
| 20130630 | 4400721 | 13805460 | 720 | 0 | 0.2 | 0.3 |
| 20130630 | 4400723 | 10825630 | 720 | 0 | 0.1 | 0.7 |
| 20130630 | 4400724 | 13300270 | 720 | 0 | -0.4 | 0.5 |
| 20130630 | 4400725 | 11027170 | 419 | 5 | -0.1 | 1.4 |
| 20130630 | 4400726 | 11023190 | 720 | 0 | -0.6 | 0.4 |
| 20130630 | 4400728 | 11020190 | 720 | 0 | -0.1 | 0.4 |
| 20130630 | 4400730 | 11846540 | 720 | 0 | -0.1 | 0.4 |
| 20130630 | 4400740 | 11883820 | 686 | 0 | 0.1 | 0.3 |
| 20130630 | 4400741 | 11688230 | 720 | 0 | 0.0 | 0.4 |
| 20130630 | 4400746 | 13357510 | 524 | 0 | 0.0 | 0.4 |
| 20130630 | 4400760 | 11880820 | 720 | 0 | 0.0 | 0.4 |
| 20130630 | 4400761 | 11883770 | 720 | 0 | -0.1 | 0.4 |
| 20130630 | 4400762 | 11244970 | 716 | 0 | -0.0 | 0.4 |
| 20130630 | 4400763 | 11683410 | 720 | 0 | -0.2 | 0.6 |
| 20130630 | 4400764 | 11688400 | 720 | 0 | -0.2 | 0.5 |
| 20130630 | 4400765 | 11685410 | 720 | 0 | -0.2 | 0.5 |
| 20130630 | 4400767 | 11919510 | 720 | 0 | 0.2 | 0.3 |
| 20130630 | 4400770 | 11798230 | 720 | 0 | 0.1 | 0.4 |
| 20130630 | 4400771 | 60507000 | 720 | 0 | -0.1 | 0.5 |
| 20130630 | 4400772 | 11544410 | 720 | 0 | -0.0 | 0.4 |
| 20130630 | 4400774 | 11460700 | 720 | 0 | 0.1 | 0.3 |
| 20130630 | 4400775 | 11540170 | 720 | 0 | -0.4 | 0.5 |
| 20130630 | 4400777 | 11885820 | 720 | 0 | 0.1 | 0.5 |
| 20130630 | 4400778 | 11463700 | 720 | 0 | -0.5 | 0.4 |
| 20130630 | 4400779 | 11885820 | 720 | 0 | -0.0 | 0.5 |
| 20130630 | 4400780 | 11880840 | 720 | 0 | 0.0 | 0.5 |
| 20130630 | 4400844 | 37533 | 711 | 0 | 0.3 | 0.3 |
| 20130630 | 4400864 | 13614150 | 720 | 0 | -0.0 | 0.5 |
| 20130630 | 4400865 | 11022610 | 720 | 0 | 0.5 | 0.4 |
| 20130630 | 4400866 | 11020180 | 720 | 0 | 0.2 | 0.4 |
| 20130630 | 4400867 | 11022740 | 720 | 0 | -0.2 | 0.3 |
| 20130630 | 4400868 | 11794230 | 718 | 0 | -0.2 | 0.5 |

**E-SURFMAR DB Monthly Report
June 2013**

| | | | | | | |
|-----------------|----------------|-----------------|------------|-----------|-------------|------------|
| 20130630 | 4400869 | 11026040 | 720 | 0 | 0.2 | 0.3 |
| 20130630 | 4400871 | 11025180 | 720 | 0 | -0.3 | 0.3 |
| 20130630 | 4400872 | 11027700 | 720 | 0 | 0.5 | 0.4 |
| 20130630 | 4400873 | 11022600 | 720 | 0 | 0.3 | 0.5 |
| 20130630 | 4400875 | 11021610 | 720 | 0 | 0.7 | 0.3 |
| 20130630 | 4800662 | 10822620 | 720 | 0 | 0.2 | 0.6 |
| 20130630 | 4800663 | 10822640 | 720 | 0 | 0.1 | 0.6 |
| 20130630 | 6200511 | 11026160 | 720 | 0 | -0.6 | 0.5 |
| 20130630 | 6200512 | 11687230 | 720 | 0 | -0.1 | 0.3 |
| 20130630 | 6200514 | 60203700 | 720 | 0 | -0.0 | 0.4 |
| 20130630 | 6200515 | 11795230 | 720 | 0 | -0.1 | 0.3 |
| 20130630 | 6200516 | 11475100 | 720 | 0 | -0.1 | 0.4 |
| 20130630 | 6200520 | 13611180 | 720 | 0 | 0.0 | 0.3 |
| 20130630 | 6200521 | 11688060 | 756 | 0 | -0.0 | 0.9 |
| 20130630 | 6200522 | 11680430 | 720 | 0 | -0.4 | 0.4 |
| 20130630 | 6200531 | 11548410 | 720 | 0 | -0.1 | 0.6 |
| 20130630 | 6200532 | 11566230 | 720 | 0 | -0.1 | 0.4 |
| 20130630 | 6200553 | 11165650 | 720 | 0 | 0.0 | 0.4 |
| 20130630 | 6200554 | 11027160 | 707 | 0 | 0.2 | 0.3 |
| 20130630 | 6200556 | 11021170 | 720 | 0 | 0.1 | 0.5 |
| 20130630 | 6200678 | 11029050 | 720 | 0 | -0.1 | 0.4 |
| 20130630 | 6200679 | 11684400 | 720 | 0 | -0.2 | 0.4 |
| 20130630 | 6200680 | 11166640 | 720 | 0 | -0.2 | 0.5 |
| 20130630 | 6200681 | 11168640 | 720 | 0 | 0.0 | 0.4 |
| 20130630 | 6200684 | 11882820 | 720 | 0 | -0.1 | 0.3 |
| 20130630 | 6200685 | 11461700 | 720 | 0 | -0.3 | 0.4 |
| 20130630 | 6200686 | 11845450 | 720 | 0 | -0.4 | 0.4 |
| 20130630 | 6200687 | 11349100 | 718 | 0 | -0.0 | 0.4 |
| 20130630 | 6200695 | 60408990 | 711 | 0 | -0.0 | 0.4 |
| 20130630 | 6200712 | 11799220 | 718 | 0 | 0.1 | 0.5 |
| 20130630 | 6200713 | 11246980 | 716 | 0 | 0.0 | 0.3 |
| 20130630 | 6200714 | 11240980 | 714 | 0 | 0.1 | 0.3 |
| 20130630 | 6300551 | 11547410 | 419 | 0 | -0.0 | 0.3 |
| 20130630 | 6300552 | 11548400 | 720 | 0 | -0.1 | 0.3 |
| 20130630 | 6300554 | 11549410 | 720 | 0 | 0.1 | 0.4 |
| 20130630 | 6300635 | 11477140 | 720 | 0 | -0.1 | 0.3 |
| 20130630 | 6300639 | 11471050 | 720 | 0 | -0.1 | 0.3 |
| 20130630 | 6300642 | 11548080 | 419 | 0 | 0.1 | 0.4 |
| 20130630 | 6400516 | 11473100 | 721 | 0 | -0.1 | 0.3 |
| 20130630 | 6400518 | 11472110 | 720 | 0 | -0.2 | 0.3 |
| 20130630 | 6400519 | 11547420 | 720 | 0 | -0.1 | 0.4 |
| 20130630 | 6400520 | 11479040 | 720 | 0 | -0.0 | 0.3 |
| 20130630 | 6400521 | 11470030 | 720 | 0 | -0.1 | 0.4 |
| 20130630 | 6400522 | 11029150 | 720 | 19 | -0.1 | 1.0 |
| 20130630 | 6400523 | 11757730 | 720 | 0 | -0.5 | 0.5 |
| 20130630 | 6400524 | 10825640 | 720 | 0 | 0.2 | 0.5 |
| 20130630 | 6400527 | 11549160 | 720 | 0 | -0.2 | 0.5 |
| 20130630 | 6400606 | 11478100 | 720 | 0 | -0.1 | 0.3 |
| 20130630 | 6400607 | 11479100 | 720 | 0 | -0.0 | 0.3 |
| 20130630 | 6400608 | 11546430 | 720 | 0 | -0.3 | 0.3 |
| 20130630 | 6400609 | 11379950 | 720 | 0 | -0.1 | 0.3 |
| 20130630 | 6400619 | 11547420 | 720 | 0 | -0.6 | 0.4 |
| 20130630 | 6400620 | 11756730 | 720 | 0 | -0.2 | 0.5 |
| 20130624 | 6400623 | 11470040 | 563 | 0 | -0.2 | 0.3 |
| 20130610 | 6400661 | 11543430 | 184 | 0 | -0.2 | 0.4 |
| 20130630 | 6500591 | 11887820 | 720 | 0 | 0.0 | 0.4 |
| 20130630 | 6500592 | 11164650 | 720 | 0 | -0.2 | 0.4 |

Air Pressure (hPa), moored buoys, June 2013

| Datend | WMO | Telcom | Recvd | GE | Bias | Std |
|----------|---------|--------|-------|----|------|-----|
| 20130630 | 1300130 | | 706 | 0 | 0.8 | 0.5 |
| 20130630 | 1300131 | | 676 | 0 | 0.4 | 0.6 |
| 20130630 | 6100001 | | 635 | 1 | 0.4 | 0.4 |
| 20130630 | 6100002 | | 720 | 0 | -0.2 | 0.5 |
| 20130630 | 6100196 | | 708 | 0 | 0.7 | 0.6 |
| 20130630 | 6100197 | | 708 | 0 | 0.8 | 0.6 |
| 20130630 | 6100198 | | 707 | 0 | 0.3 | 0.7 |
| 20130630 | 6100280 | | 707 | 0 | 0.7 | 0.6 |
| 20130630 | 6100281 | | 708 | 0 | 0.6 | 0.7 |
| 20130630 | 6100417 | | 700 | 0 | 0.5 | 0.6 |
| 20130630 | 6100430 | | 709 | 0 | 0.1 | 0.5 |
| 20130630 | 6200001 | | 720 | 0 | 0.1 | 0.4 |
| 20130630 | 6200024 | | 708 | 0 | 0.5 | 0.6 |

**E-SURFMAR DB Monthly Report
June 2013**

| | | | | | |
|----------|---------|-----|---|------|-----|
| 20130630 | 6200025 | 707 | 0 | 0.4 | 0.6 |
| 20130630 | 6200029 | 719 | 0 | 0.2 | 0.6 |
| 20130630 | 6200081 | 717 | 0 | -0.2 | 0.5 |
| 20130630 | 6200083 | 707 | 0 | 0.6 | 0.6 |
| 20130630 | 6200084 | 707 | 0 | 0.6 | 0.6 |
| 20130630 | 6200085 | 702 | 0 | 0.4 | 0.5 |
| 20130630 | 6200091 | 714 | 0 | 0.4 | 0.5 |
| 20130630 | 6200093 | 561 | 7 | -0.0 | 1.9 |
| 20130630 | 6200094 | 716 | 0 | -0.2 | 0.4 |
| 20130630 | 6200095 | 719 | 1 | 0.3 | 0.9 |
| 20130630 | 6200105 | 707 | 0 | 0.1 | 0.4 |
| 20130630 | 6200163 | 718 | 0 | 0.1 | 0.6 |
| 20130630 | 6400045 | 699 | 0 | 0.1 | 0.7 |
| 20130630 | 6400046 | 716 | 0 | 0.1 | 0.5 |

Air Temperature (C), moored buoys, June 2013

| Datend | WMO | Telcom | Recvd | GE | Bias | Std |
|----------|---------|--------|-------|----|------|-----|
| 20130630 | 1300130 | | 705 | 0 | -0.8 | 0.3 |
| 20130630 | 1300131 | | 675 | 0 | -0.0 | 0.9 |
| 20130630 | 6100001 | | 643 | 0 | -1.0 | 0.7 |
| 20130630 | 6100002 | | 720 | 0 | -0.2 | 0.7 |
| 20130630 | 6100196 | | 708 | 0 | -0.1 | 0.7 |
| 20130630 | 6100197 | | 707 | 0 | -0.5 | 0.7 |
| 20130630 | 6100198 | | 704 | 0 | -0.2 | 1.3 |
| 20130630 | 6100280 | | 707 | 0 | -0.2 | 1.1 |
| 20130630 | 6100281 | | 708 | 0 | -0.5 | 0.8 |
| 20130630 | 6100417 | | 692 | 0 | -0.2 | 0.5 |
| 20130630 | 6100430 | | 709 | 0 | 0.1 | 0.5 |
| 20130630 | 6200001 | | 720 | 0 | -0.2 | 0.5 |
| 20130630 | 6200024 | | 704 | 0 | 0.2 | 0.5 |
| 20130630 | 6200029 | | 719 | 0 | -0.2 | 0.5 |
| 20130630 | 6200081 | | 717 | 1 | 0.2 | 1.0 |
| 20130630 | 6200083 | | 690 | 0 | -0.2 | 0.4 |
| 20130630 | 6200084 | | 706 | 0 | -0.4 | 0.8 |
| 20130630 | 6200085 | | 701 | 0 | -0.1 | 0.8 |
| 20130630 | 6200091 | | 714 | 0 | -0.2 | 0.7 |
| 20130630 | 6200093 | | 561 | 0 | -0.1 | 0.9 |
| 20130630 | 6200094 | | 716 | 0 | 0.3 | 0.5 |
| 20130630 | 6200095 | | 686 | 0 | -0.0 | 0.6 |
| 20130630 | 6200105 | | 707 | 0 | 0.1 | 0.5 |
| 20130630 | 6200163 | | 718 | 0 | -0.5 | 0.4 |
| 20130630 | 6400045 | | 699 | 0 | -0.2 | 0.5 |
| 20130630 | 6400046 | | 716 | 0 | 0.0 | 0.4 |
| 20130630 | 6600021 | | 702 | 0 | 0.2 | 0.8 |

Wind direction (deg.), moored buoys, June 2013

| Datend | WMO | Telcom | Recvd | GE | Bias | Std |
|----------|---------|--------|-------|----|------|-----|
| 20130630 | 1300130 | | 702 | 0 | -23 | 13 |
| 20130630 | 1300131 | | 676 | 72 | 9 | 28 |
| 20130630 | 6100001 | | 635 | 54 | -2 | 35 |
| 20130630 | 6100002 | | 634 | 3 | -5 | 21 |
| 20130630 | 6100197 | | 696 | 9 | -9 | 27 |
| 20130630 | 6100198 | | 470 | 6 | 2 | 23 |
| 20130630 | 6100280 | | 688 | 21 | 3 | 34 |
| 20130630 | 6100281 | | 246 | 21 | 4 | 28 |
| 20130630 | 6100417 | | 693 | 8 | -4 | 23 |
| 20130630 | 6100430 | | 678 | 20 | -13 | 28 |
| 20130630 | 6200001 | | 719 | 15 | 0 | 18 |
| 20130630 | 6200024 | | 703 | 40 | 1 | 27 |
| 20130630 | 6200025 | | 691 | 53 | 1 | 25 |
| 20130630 | 6200029 | | 711 | 10 | -5 | 27 |
| 20130630 | 6200081 | | 716 | 6 | -1 | 17 |
| 20130630 | 6200084 | | 699 | 4 | -8 | 19 |
| 20130630 | 6200085 | | 698 | 20 | -11 | 18 |
| 20130630 | 6200091 | | 712 | 19 | 0 | 26 |
| 20130630 | 6200093 | | 561 | 80 | 1 | 19 |
| 20130630 | 6200094 | | 716 | 10 | 1 | 17 |
| 20130630 | 6200095 | | 689 | 6 | -3 | 16 |
| 20130630 | 6200105 | | 707 | 3 | -4 | 18 |

E-SURFMAR DB Monthly Report June 2013

| | | | | | |
|----------|---------|-----|----|----|----|
| 20130630 | 6200163 | 716 | 1 | -7 | 12 |
| 20130630 | 6400045 | 697 | 4 | -0 | 15 |
| 20130630 | 6400046 | 716 | 14 | 1 | 18 |
| 20130630 | 6600021 | 701 | 11 | 1 | 27 |

Wind speed rate, moored buoys, June 2013

| Datend | WMO | Telcom | Recvd | GE | Rate | Err |
|----------|---------|--------|-------|----|------|-----|
| 20130630 | 1300130 | | 702 | 0 | 1.0 | 0.9 |
| 20130630 | 1300131 | | 676 | 0 | 1.0 | 2.6 |
| 20130630 | 6100001 | | 635 | 0 | 1.3 | 1.7 |
| 20130630 | 6100002 | | 634 | 1 | 0.9 | 2.5 |
| 20130630 | 6100197 | | 696 | 0 | 1.0 | 1.5 |
| 20130630 | 6100198 | | 470 | 0 | 0.7 | 1.9 |
| 20130630 | 6100280 | | 688 | 0 | 1.3 | 1.5 |
| 20130630 | 6100281 | | 246 | 0 | 0.8 | 2.4 |
| 20130630 | 6100417 | | 693 | 0 | 0.9 | 1.5 |
| 20130630 | 6100430 | | 678 | 0 | 1.2 | 1.4 |
| 20130630 | 6200001 | | 719 | 0 | 1.1 | 1.3 |
| 20130630 | 6200024 | | 703 | 0 | 1.0 | 1.4 |
| 20130630 | 6200025 | | 691 | 0 | 0.9 | 2.0 |
| 20130630 | 6200029 | | 711 | 0 | 1.1 | 1.5 |
| 20130630 | 6200081 | | 716 | 0 | 1.1 | 1.4 |
| 20130630 | 6200084 | | 699 | 0 | 1.0 | 1.4 |
| 20130630 | 6200085 | | 698 | 0 | 0.9 | 1.9 |
| 20130630 | 6200091 | | 712 | 0 | 1.1 | 1.8 |
| 20130630 | 6200093 | | 561 | 0 | 1.4 | 3.1 |
| 20130630 | 6200094 | | 716 | 0 | 1.0 | 1.4 |
| 20130630 | 6200095 | | 683 | 0 | 1.1 | 1.6 |
| 20130630 | 6200105 | | 707 | 0 | 1.0 | 1.3 |
| 20130630 | 6200163 | | 716 | 0 | 1.0 | 1.0 |
| 20130630 | 6400045 | | 697 | 1 | 1.0 | 1.2 |
| 20130630 | 6400046 | | 716 | 0 | 1.1 | 1.2 |
| 20130630 | 6600021 | | 701 | 0 | 1.3 | 1.4 |

Comments on QC statistics :

The networks performed very well in June...

Air pressure

1. Air pressure measurements reported by Metocean buoy WMO **4400684** operated by Environment Canada, had to be removed from the GTS because they were wrong.
2. Metocean buoy WMO **6400522** reported a few wrong pressure values onto the GTS for unknown reasons. Measurements became right back later.

Monthly QC statistics and other data quality control tools are available on line at :

<http://www.meteo.shom.fr/qctools/>

The working area of the E-SURFMAR website is open at <http://esurfmar.meteo.fr/wikisurf-wa/> . Ask the E-SURFMAR Programme Manager Pierre.Blouch@meteo.fr for the password in case you forgot it. Graphs of system performances may be displayed/downloaded at http://esurfmar.meteo.fr/doc/r/surfmar/others/e-surfmar_monitoring.pdf.