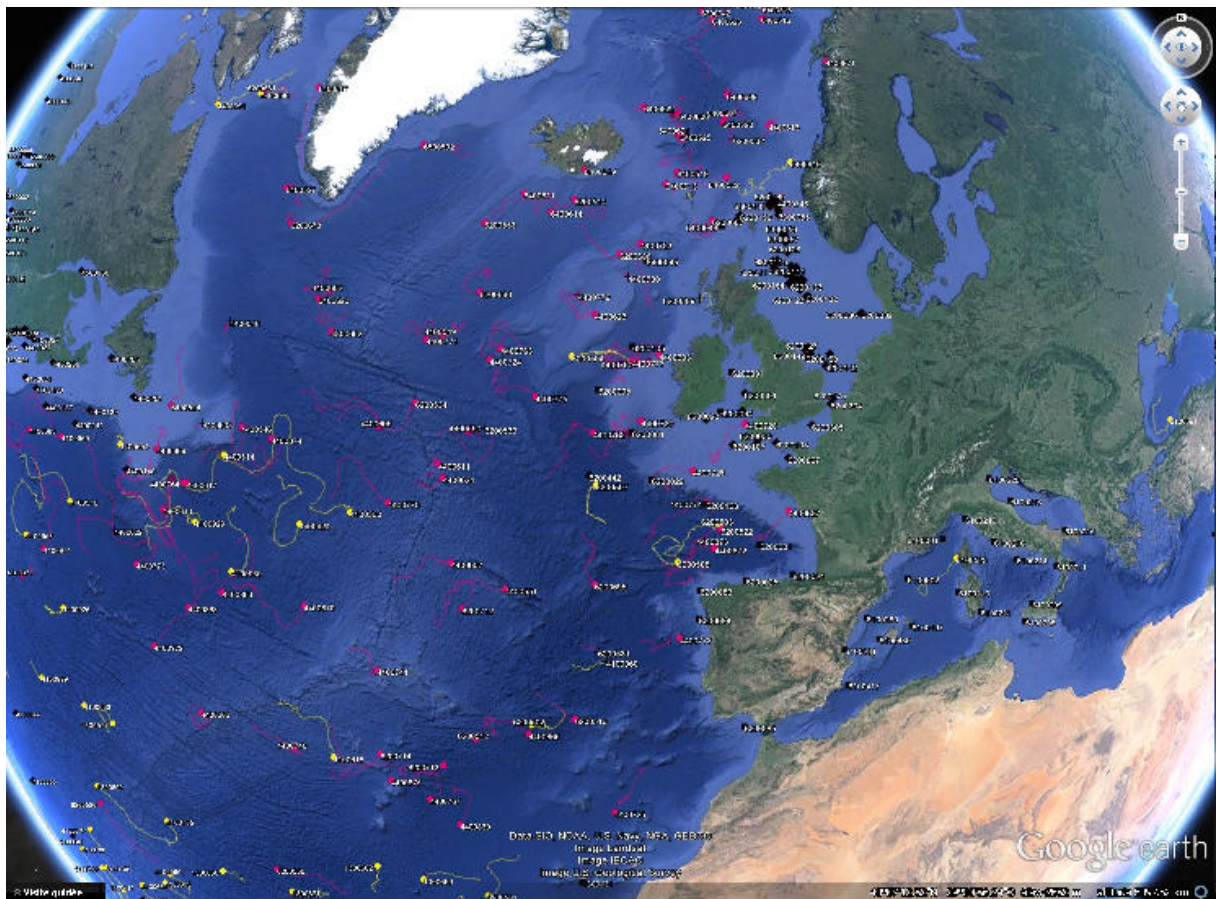


DATA BUOY MONTHLY REPORT

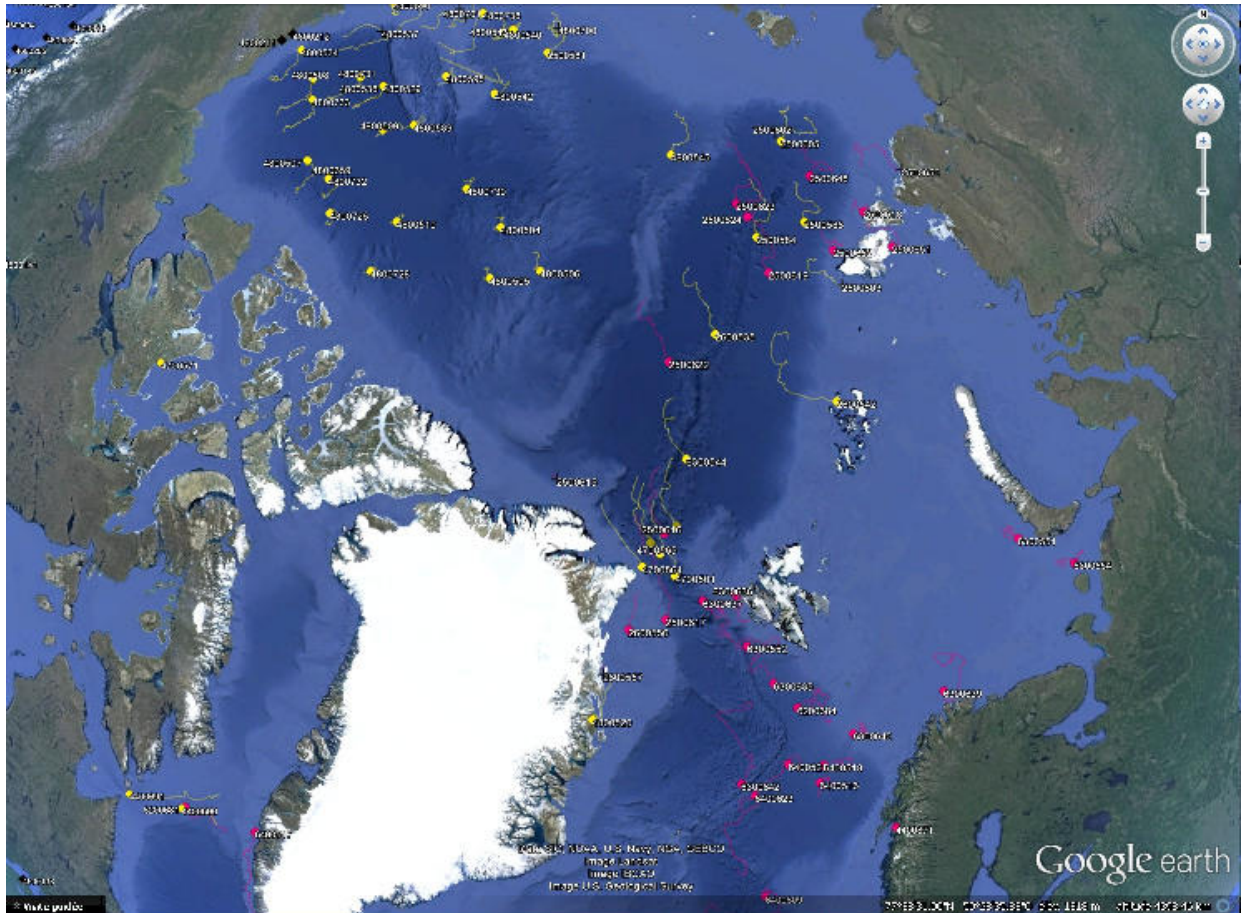
October 2013



*October 2013 – Operating data buoys in the North Atlantic
Drifting buoy trajectories : E-SURFMAR (red), others (yellow)
Moored buoy positions (black)*

*Most recent trajectories may be seen at:
http://www.meteo.shom.fr/cartographie/data/kml/MeteoFrance_buoys_map_15.kmz*

**E-SURFMAR DB Monthly Report
October 2013**



*October 2013
Drifting buoy trajectories in Arctic Ocean and adjacent seas : E-SURFMAR (red), others (yellow)*

DRIFTING BUOYS

Network status

By the end of October, **118 Drifting buoys**, reporting air pressure onto the GTS, were in operation in the frame of E-SURFMAR. Out of these, 89 were E-SURFMAR funded Iridium SVP-Bs, including 11 in the Arctic and 11 HRSST-2 buoys. The remaining buoys were: 27 Iridium drifters owned by NOAA and upgraded with barometers by E-SURFMAR and two Iridium buoys owned by external partners (Marlin Yug in the Black Sea and Environment Canada in North Atlantic).

These buoys include one which is beached in Iceland (WMO 6400619) but which reports reliable pressure data onto the GTS and two prototypes of Iridium SVP-Bs (WMO 6200507 and 6200508) built by DBI and owned by NOAA.

A few Iridium buoys are emitting sporadically. In October, this was again the case for Metocean buoy WMO 4400746 which apparently stopped definitely after 692 days at sea. The GTS transmission of air pressure was rehabilitated for Metocean SVP-B WMO 2500618 (06/10), 2500651 (28/10), 6300639 (28/10) and 6300642 (01/10) after noticing they were reliable back.

Information about the availability of buoys for future deployments may be get from the E-SURFMAR wikisite (working area) at: http://esurfmar.meteo.fr/wikisurf-wa/index.php/Availability_of_drifting_buoys

Besides E-SURFMAR buoys, 52 drifting buoys were reporting at least air pressure or wind observations from the EUMETNET area of interest. Out of these, 6 were reporting Sea Surface Salinity, some in the frame of Spurs/Strasse campaign (validation of SMOS and Aquarius remote SSS measurements).

No buoys were deployed in October.

Operating drifting buoys in North Atlantic by the end of the month

WMO	Telcom	Typ	Ow	nobs	Wi	AT	AP	dP	ST	Wa	Ws	Dr	Sb	U	SS	O	Start_end	Lat	Lon	Age
2500616	11549100	MSB	EU	744	-	-	X	X	-	-	-	X	-	-	-	T	0110-3110	82.82	-2.09	418
2500617	11540100	MSB	EU	744	-	-	X	X	-	-	-	X	-	-	-	T	0110-3110	79.64	-5.75	418
2500618	64244420	MSB	EU	744	-	-	X	X	X	-	-	X	-	-	-	T	0110-3110	79.24	104.91	66
2500619	60276270	MSB	EU	744	-	-	X	X	X	-	-	X	-	-	-	T	0110-3110	83.80	101.69	64
2500622	11540110	MSB	EU	744	-	-	X	X	-	-	-	X	-	-	-	T	0110-3110	88.12	55.01	423
2500623	60174700	MSB	EU	744	-	-	X	X	X	-	-	X	-	-	-	T	0110-3110	83.00	126.52	61
2500624	60247420	MSB	EU	744	-	-	X	X	X	-	-	X	-	-	-	T	0110-3110	83.12	121.08	62
2500648	60370080	MSB	EU	744	-	-	X	X	X	-	-	X	-	-	-	T	0110-3110	80.12	117.81	53
2500651	60568820	MSB	EU	663	-	-	X	X	X	-	-	X	-	-	-	T	0110-3110	78.81	96.05	53
2500652	60176700	MSB	EU	740	-	-	X	X	X	-	-	X	-	-	-	T	0110-3110	81.10	99.94	50
2600556	11549080	MSB	EU	744	-	-	X	X	-	-	-	X	-	-	-	T	0110-3110	79.38	-13.52	404
4100969	60213780	PSB	UP	723	-	-	X	X	X	-	-	X	-	-	-	T	0110-3110	41.76	-58.96	85
4100970	60213790	PSB	UP	744	-	-	X	X	X	-	-	X	-	-	-	T	0110-3110	32.43	-58.99	84
4100971	60215900	PSB	UP	744	-	-	X	X	X	-	-	X	-	-	-	T	0110-3110	35.36	-57.13	84
4100972	60217780	PSB	UP	744	-	-	X	X	X	-	-	X	-	-	-	T	0110-3110	34.94	-45.30	84
4400546	11160640	MSB	EU	744	-	-	X	X	X	-	-	X	-	-	-	T	0110-3110	47.87	-43.01	226
4400549	11025170	MSB	EU	744	-	-	X	X	X	-	-	X	-	-	-	T	0110-3110	54.88	-28.82	634
4400550	11545160	MSB	E2	741	-	-	X	X	X	-	-	X	-	-	-	T	0110-3110	50.59	-25.52	226
4400551	11027150	MSB	EU	744	-	-	X	X	X	-	-	X	-	-	-	T	0110-3110	43.46	-21.77	634
4400602	11468700	MSB	UP	744	-	-	X	X	X	-	-	X	-	-	-	T	0110-3110	55.61	-39.76	224
4400603	11540410	MSB	UP	744	-	-	X	X	X	-	-	X	-	-	-	T	0110-3110	54.53	-11.11	396
4400605	11473110	MSB	EU	744	-	-	X	X	X	-	-	X	-	-	-	T	0110-3110	50.03	-32.28	174
4400606	11687410	MSB	EU	745	-	-	X	X	X	-	-	X	-	-	-	T	0110-3110	32.65	-40.96	392
4400607	11474110	MSB	EU	744	-	-	X	X	X	-	-	X	-	-	-	T	0110-3110	44.37	-25.49	175
4400609	11686230	MSB	EU	744	-	-	X	X	X	-	-	X	-	-	-	T	0110-3110	44.77	-49.48	36
4400611	11471110	MSB	EU	744	-	-	X	X	X	-	-	X	-	-	-	T	0110-3110	48.87	-27.30	240
4400613	11475040	MSB	EU	744	-	-	X	X	X	-	-	X	-	-	-	T	0110-3110	42.14	-47.27	240
4400616	11813550	MSB	EU	744	-	-	X	X	X	-	-	X	-	-	-	T	0110-3110	65.27	3.84	648
4400617	11474100	MSB	EU	744	-	-	X	X	X	-	-	X	-	-	-	T	0110-3110	44.04	-45.95	239
4400624	11341110	YSB	EU	742	-	-	X	X	X	-	-	X	-	-	-	T	0110-3110	48.27	-26.82	325
4400627	11028170	MSB	EU	745	-	-	X	X	X	-	-	X	-	-	-	T	0110-3110	46.65	-2.75	574

E-SURFMAR DB Monthly Report October 2013

6400609	11379950	MSB	EU	744	-	-	X	X	X	-	-	X	-	-	-	T	0110-3110	67.31	0.01	173
6400610	11540440	MSB	UP	744	-	-	X	X	X	-	-	X	-	-	-	T	0110-3110	63.12	4.69	125
6400611	11548420	MSB	UP	744	-	-	X	X	X	-	-	X	-	-	-	T	0110-3110	62.26	-23.87	119
6400613	60174710	MSB	EU	744	-	-	X	X	X	-	-	X	-	-	-	T	0110-3110	62.86	-9.20	61
6400614	60178700	MSB	EU	744	-	-	X	X	X	-	-	X	-	-	-	T	0110-3110	61.44	-20.90	57
6400619	11544440	MSB	UP	744	-	-	X	X	-	-	-	X	-	-	-	T	0110-3110	63.68	-17.77	272
6400620	11756730	MSB	UP	744	-	-	X	X	X	-	-	X	-	-	-	T	0110-3110	55.09	-40.46	518
6400621	60170720	MSB	EU	672	-	-	X	X	X	-	-	X	-	-	-	T	0210-3110	65.50	-7.28	75
6400622	60172810	MSB	EU	744	-	-	X	X	X	-	-	X	-	-	-	T	0110-3110	67.09	-10.80	77
6400623	11470040	MSB	EU	744	-	-	X	X	X	-	-	X	-	-	-	T	0110-3110	71.91	1.84	173
6500592	11164650	MSB	EU	744	-	-	X	X	X	-	-	X	-	-	-	T	0110-3110	63.93	-36.21	350

----- Drifting buoys which ceased to be operational

WMO	Telcom	Typ	Ow	End_Date	Lat	Lon	Age	Cause
2500615	13409520	MIB	EU	20131014	84.5	-40.6	766	Faded ?
2500650	60378060	MSB	EU	20131017	76.8	108.2	53	AP failed (rehabilitated on Nov. 4th)
2600557	11544090	MSB	EU	20131008	77.7	-18.2	383	Faded
4400548	11160660	MSB	EU	20131025	52.3	-47.6	219	Unknown
4400608	11681420	MSB	EU	20131007	47.2	-46.4	12	Unknown
4400622	11881820	PSB	UP	20131030	39.5	-50.9	479	Faded
4400623	11167640	MSB	EU	20131031	56.5	-16.3	352	AP failed
4400746	13357510	MSB	EU	20131030	61.3	1.9	692	Faded - Was emitting intermittently
4400779	11885820	PSB	UP	20131023	57.4	-17.8	460	Faded
4400780	11880840	PSB	UP	20131022	58.3	-13.4	459	Faded
6200531	11548410	MSB	UP	20131008	40.7	-15.8	363	Faded
6200532	11566230	MSB	UP	20131001	64.9	-0.8	355	Faded
6200533	11684410	MSB	EU	20131022	50.8	-24.3	29	Unknown
6300552	11548400	MSB	UP	20131031	77.8	7.9	463	AP failed (rehabilitated on Nov. 4th)
6300637	60276250	MSB	EU	20131031	80.0	2.7	78	AP failed (rehabilitated on Nov. 4th)
6400524	10825640	MSB	EU	20131031	47.2	-49.7	494	Measurements failed

----- Non-operating drifting buoys reporting GTS data

WMO	Telcom	Typ	Ow	nobs	Wi	AT	AP	dP	ST	Wa	Ws	Dr	Sb	U	SS	O	Start_end	Lat	Lon	Age
4400623	11167640	MSB	EU	744	-	-	X	X	X	-	-	X	-	-	-	T	0110-3110	56.51	-16.32	352
4400684	12297120	MSB	CA	743	-	-	-	X	X	-	-	X	-	-	-	O	0110-3110	42.01	-29.75	221
6300552	11548400	MSB	UP	744	-	-	S	S	X	-	-	X	-	-	-	T	0110-3110	77.77	7.89	463
6300637	60276250	MSB	EU	744	-	-	S	S	X	-	-	X	-	-	-	T	0110-3110	80.00	2.74	78
6500593	11371920	MSB	EU	744	-	-	-	-	X	-	-	-	-	-	-	T	0110-3110	71.11	-62.89	60

----- Non-operating drifting buoys which ceased to emit

WMO	Telcom	Typ	Ow	End_Date	Lat	Lon	Age	Cause
2500649	60375030	MSB	EU	20131005	79.5	111.7	52	

----- Other operating drifting buoys into the EUCOS area of interest by the end of the month

WMO	Telcom	Typ	Ow	nobs	Wi	AT	AP	dP	ST	Wa	Ws	Dr	Sb	U	SS	O	Start_end	Lat	Lon
1300577	114638	LODY		1479	-	-	X	-	X	-	-	X	-	-	X	T	0110-3110	28.56	-47.87
1300600	43869	AOML		744	-	-	X	X	-	-	-	X	-	-	-	L	0110-3110	22.83	-49.21
1300659	11910180	UKMO		743	-	-	X	X	X	-	-	X	-	-	-	T	0110-3110	26.97	-25.78
1300660	11022040	UKMO		743	-	-	X	X	X	-	-	X	-	-	-	T	0110-3110	22.58	-38.79
1300661	11912280	UKMO		536	-	-	X	X	X	-	-	X	-	-	-	T	0110-3110	23.39	-33.95
1300662	11098800	UKMO		743	-	-	X	X	X	-	-	X	-	-	-	T	0110-3110	27.20	-28.57
1300664	11090810	UKMO		743	-	-	X	X	X	-	-	X	-	-	-	T	0110-3110	25.80	-23.59
1300665	11091810	UKMO		728	-	-	X	X	X	-	-	X	-	-	-	T	0110-3110	18.33	-43.55
1300666	11099800	UKMO		733	-	-	X	X	X	-	-	X	-	-	-	T	0110-3110	16.47	-31.45
1300899	11977530	CMM		668	-	-	X	X	X	-	-	X	-	-	X	T	0110-3110	7.20	-26.31
4100560	114550	AOML		743	-	-	X	-	-	-	-	X	-	-	-	L	0110-3110	45.74	-33.02

**E-SURFMAR DB Monthly Report
October 2013**

4100562	114558	AOML	743	-	-	X	-	X	-	-	X	-	-	-	L	0110-3110	34.39	-67.66
4100564	109221	AOML	632	-	-	X	-	X	-	-	X	-	-	-	L	0110-3110	22.66	-69.63
4100596	11473050	AOMF	419	-	-	X	X	X	-	-	X	-	-	-	T	1410-3110	19.52	-43.03
4100599	11546410	CMM	743	-	-	X	X	X	-	-	X	-	-	-	T	0110-3110	18.81	-66.47
4100616	101618	AOML	744	-	-	X	X	X	-	-	X	-	-	-	L	0110-3110	33.12	-31.68
4100632	11474050	AOMF	419	-	-	X	X	X	-	-	X	-	-	-	T	1410-3110	16.20	-45.81
4100633	114634	LODY	1525	-	-	X	-	-	-	-	X	-	-	-	T	0110-3110	28.24	-50.59
4100634	114632	LODY	1471	-	-	X	-	X	-	-	X	-	-	X	T	0110-3110	27.82	-62.55
4100636	11568080	AOMF	171	-	-	X	X	X	-	-	X	-	-	-	T	2410-3110	36.22	-69.41
4100705	11596570	AOMF	743	-	-	X	X	X	-	-	X	-	-	-	T	0110-3110	24.11	-43.04
4100706	11595580	AOMF	743	-	-	X	X	X	-	-	X	-	-	-	T	0110-3110	14.54	-49.51
4100707	11590580	AOMF	743	-	-	X	X	X	-	-	X	-	-	-	T	0110-3110	17.77	-50.46
4100708	11585510	AOMF	743	-	-	X	X	X	-	-	X	-	-	-	T	0110-3110	13.90	-52.19
4100709	11598570	AOMF	743	-	-	X	X	X	-	-	X	-	-	-	T	0110-3110	13.89	-50.11
4100711	11477030	AOMF	401	-	-	X	X	X	-	-	X	-	-	-	T	1510-3110	13.41	-48.05
4100739	11912120	UKMO	743	-	-	X	X	-	-	-	X	-	-	-	T	0110-3110	26.25	-67.64
4100929	101720	AOML	736	-	-	X	X	X	-	-	X	-	-	-	L	0110-3110	42.43	-44.40
4100930	101719	AOML	723	-	-	X	X	X	-	-	X	-	-	-	L	0110-3110	40.88	-40.65
4100932	101716	AOML	741	-	-	X	X	X	-	-	X	-	-	-	L	0110-3110	32.23	-66.41
4100957	101718	AOML	743	-	-	X	X	X	-	-	X	-	-	-	L	0110-3110	33.04	-68.83
4100958	101700	AOML	741	-	-	X	X	X	-	-	X	-	-	-	L	0110-3110	35.05	-59.44
4100999	114623	AOML	277	-	-	X	X	X	-	-	X	-	-	-	L	1810-3110	27.25	-55.23
4400514	126483	AOML	733	-	-	X	X	X	-	-	X	-	-	-	L	0110-3110	46.24	-43.70
4400516	114599	AOML	280	-	-	X	X	X	-	-	X	-	-	-	L	1810-3110	39.15	-55.80
4400554			246	-	-	X	X	X	-	-	X	-	-	-	L	2110-3110	43.81	-52.90
4400690	11248370	EC	743	-	-	X	X	X	-	-	X	-	-	-	O	0110-3110	63.16	-59.85
4400691	11245370	EC	743	-	-	X	X	X	-	-	X	-	-	-	O	0110-3110	61.33	-64.25
4400924	126481	AOML	742	-	-	X	X	X	-	-	X	-	-	-	L	0110-3110	44.45	-36.48
4400926	101723	AOML	725	-	-	X	X	X	-	-	X	-	-	-	L	0110-3110	33.19	-53.86
4700501	xx819920	APL	247	-	X	X	X	S	-	-	-	-	-	-	O	0110-3110	81.17	-1.85
4700564	11095250	APL	743	-	-	X	X	-	-	-	-	-	-	-	O	0110-3110	81.72	-9.61
4700565	11091860	APL	743	-	-	X	X	X	-	-	-	-	-	-	O	0110-3110	82.11	-4.52
4800520	46517	PSC	746	-	X	X	X	-	-	-	-	-	-	-	L	0110-3110	75.84	-19.44
4800533	114527	NESD	247	-	X	X	X	X	-	-	-	-	X	-	O	0110-3110	82.58	-6.63
6100523	10209530	CMM	743	-	-	X	X	-	-	-	X	-	-	-	T	0110-3110	42.22	8.44
6200501	11540090	CMM	255	-	-	X	X	X	-	-	X	-	-	X	T	0110-3110	26.61	-21.99
6200502	11758720	CMM	664	-	-	X	X	X	-	-	X	-	-	X	T	0510-3110	36.86	-19.73
6200503	11758700	CMM	744	-	-	X	X	X	-	-	X	-	-	X	T	0110-3110	46.45	-7.62
6200504	11972540	CMM	598	-	-	X	X	X	-	-	X	-	-	X	T	0110-3110	54.50	-18.08
6300544	xx973540	APL	743	-	-	X	X	X	-	-	-	-	-	-	O	0110-3110	85.12	14.58
6400532	xx589520	APL	743	-	-	X	X	X	-	-	-	-	-	-	O	0110-3110	82.98	1.87

**-----
Abbreviations
-----**

WMO : WMO id.
Argos : Argos id.
Typ : Buoy type
 - first character : Manufacturer (C = ConMar , M = Meteocean, P = Pacific Gyre
 T = Technocean, Y = Marlin-Yug...)
 - second character : Main type (F = FGGE, I = ICEB, S = SVP)
 - third character : Sub type (B = barometer buoy, W = Wind buoy,
 S = Salinity buoy)
Ow : Buoy owner (country code or EU for EUCOS, E2 for HRSST-2 buoys, UP for upgraded
buoys)
Owner : Buoy owner for non EUCOS buoys
Nobs : number of GTS reports received at Meteo-France
Parameters (X = OK, S = stopped, - = not measured) :
 Wi : Wind
 AT : Air Temperature
 AP : Air Pressure
 dP : Air pressure tendency
 ST : Sea surface Temperature
 Wa : Wave period and height
 Ws : Wave spectra
 Dr : Drogue presence
 Sb : Subsurface temperature
 U : Relative humidity
 SS : Sea surface Salinity
O : Origin of the reports (T = Argos Toulouse, L = Argos Largo, O = Other)
Start_end : first and last dates of the month for which GTS data were received at Meteo-France

**E-SURFMAR DB Monthly Report
October 2013**

Lat : Latitude of the latest position
Lon : Longitude of the latest position
Age : Age of the buoy (days)

DepDate : Date of deployment
DepLat : Latitude of deployment
Dep Lon : Longitude of Deployment
From : Harbour of departure

Definition : An operating drifting buoy is a buoy providing at least air pressure or wind (direction and velocity) data.

MOORED BUOYS

No data have been received from Greek moored buoys since the 1st of July 2012.

Operating EGOS moored buoys (K-pattern)

WMO	Name	nobs	Wi	AT	AP	dP	ST	Wa	Ws	Dr	Sb	U	SS	O	Start_end	Lat	Lon
6100001	Cote d'Azur	736	X	X	X	X	X	X	-	-	-	X	-	T	0110-3110	43.40	7.80
6100002	Lion	617	X	X	X	X	X	X	-	-	-	X	-	T	0110-3110	42.10	4.70
6200001	Gascogne	744	X	X	X	X	X	X	-	-	-	X	-	O	0110-3110	45.30	-5.00
6200029	K1	738	X	X	X	X	X	X	-	-	-	X	-	O	0110-3110	48.70	-12.50
6200081	K2	743	X	X	X	X	-	X	-	-	-	X	-	O	0110-3110	51.00	-13.20
6200090	M1	-	-	-	-	-	-	-	-	-	-	-	-	-	-	53.10	-11.20
6200091	M2	741	X	X	X	-	S	X	-	-	-	X	-	O	0110-3110	53.50	-5.40
6200092	M3	-	-	-	-	-	-	-	-	-	-	-	-	-	-	51.20	-10.50
6200093	M4	743	X	X	X	-	X	X	-	-	-	-	-	O	0110-3110	54.70	-9.10
6200094	M5	743	X	X	X	-	X	X	-	-	-	X	-	O	0110-3110	51.70	-6.70
6200095	M6	744	-	X	X	X	X	X	-	-	-	X	-	O	0110-3110	53.10	-15.90
6200105	K4	743	X	X	X	X	X	X	-	-	-	X	-	O	0110-3110	55.80	-11.40
6200108	K3	-	-	-	-	-	-	-	-	-	-	-	-	-	-	53.50	-19.50
6200163	Brittany	744	X	X	X	X	X	X	-	-	-	X	-	O	0110-3110	47.50	-8.40
6400045	K5	742	X	X	X	X	X	X	-	-	-	X	-	O	0110-3110	59.10	-11.70
6400046	K7	741	X	X	X	-	X	X	-	-	-	X	-	O	0110-3110	60.70	-5.20

Comments:

- EUCOS moored buoys are presented in bold characters.

Operating EGOS moored buoys (Spanish SeaWatch and WaveScan)

WMO	Name	nobs	Wi	AT	AP	dP	ST	Wa	Ws	Dr	Sb	U	SS	O	Start_end	Lat	Lon
1300130	Gran Canaria	-	-	-	-	-	-	-	-	-	-	-	-	-	-	28.18	-15.82
1300131	Tenerife Sur	738	X	X	X	-	-	X	-	-	-	-	-	O	0110-3110	28.00	-16.58
6100196	C. Begur	-	-	-	-	-	-	-	-	-	-	-	-	-	-	41.92	3.65
6100197	Mahon	744	X	S	X	-	-	X	-	-	-	-	-	O	0110-3110	39.72	4.42
6100198	C. de Gata	-	-	-	-	-	-	-	-	-	-	-	-	-	-	36.57	-2.33
6100280	Tarragona	744	X	X	X	-	X	X	-	-	-	X	O	0110-3110	40.77	1.47	
6100281	Valencia	744	X	X	X	-	X	X	-	-	-	X	O	0110-3110	39.47	-0.27	
6100417	C. de Palos	710	X	X	X	-	X	X	-	-	-	X	O	0110-3110	37.65	-0.32	
6100430	Dragonera	727	X	X	X	-	X	X	-	-	-	-	O	0110-3110	39.56	2.11	
6200024	Bilbao-Visc.	726	X	X	X	-	X	X	-	-	-	X	O	0110-3110	43.63	-3.03	
6200025	C. de Penas	742	X	X	X	-	X	X	-	-	-	X	O	0110-3110	43.73	-6.17	
6200082	E. de Bares	15	S	S	S	S	S	S	-	-	-	S	S	-	0110-1710	44.13	-7.69
6200083	Villano-Sis.	744	X	X	X	-	X	X	-	-	-	X	O	0110-3110	43.48	-9.22	
6200084	C. Silleiro	642	X	X	X	-	X	X	-	-	-	X	O	0110-3010	42.12	-9.43	
6200085	G. de Cadiz	744	X	X	X	-	X	X	-	-	-	X	O	0110-3110	36.48	-6.97	
0	Santander	-	-	-	-	-	-	-	-	-	-	-	-	-	-	43.84	-3.77

Comments:

- The EUCOS buoy is presented in bold characters.

Operating ISPRA moored buoys (Italy)

WMO	Name	nobs	Wi	AT	AP	dP	ST	Wa	Ws	Dr	Sb	U	SS	O	Start_end	Lat	Lon
6100207		38	-	-	S	-	S	S	-	-	-	-	-	-	0210-1610	37.44	15.15
6100208		157	-	-	X	-	X	X	-	-	-	-	-	O	2810-3110	37.52	12.53
6100209		1023	-	-	X	-	X	X	-	-	-	-	-	O	1010-3110	38.26	13.33
6100210		1479	-	-	X	-	X	X	-	-	-	-	-	O	0110-3110	39.02	17.22
6100211		1480	-	-	X	-	X	X	-	-	-	-	-	O	0110-3110	39.45	15.92
6100212		-	-	-	-	-	-	-	-	-	-	-	-	-	-	40.62	9.89
6100213		1479	-	-	X	-	X	X	-	-	-	-	-	O	0110-3110	40.55	8.11
6100214		1469	-	-	X	-	X	X	-	-	-	-	-	O	0110-3110	40.87	12.95

E-SURFMAR DB Monthly Report October 2013

6100215	1481	-	-	S	-	X	X	-	-	-	-	-	O	0110-3110	40.98	17.38
6100216	1315	-	-	X	-	X	X	-	-	-	-	-	O	0110-3110	42.24	11.55
6100218	336	-	-	S	-	S	S	-	-	-	-	-		0110-2310	43.83	13.72
6100219	1044	-	-	S	-	S	S	-	-	-	-	-		0110-2310	43.93	9.83
6100220	1244	-	-	X	-	X	X	-	-	-	-	-	O	0110-3110	45.33	12.52
6100221	1327	-	-	X	-	X	X	-	-	-	-	-	O	0110-3110	39.12	9.40

----- Operating POSEIDON moored buoys (Greece)

WMO	Name	nobs	Wi	AT	AP	dP	ST	Wa	Ws	Dr	Sb	U	SS	O	Start_end	Lat	Lon
6101000			-	-	-	-	-	-	-	-	-	-	-			39.10	24.50
6101001			-	-	-	-	-	-	-	-	-	-	-			37.60	23.60
6101002			-	-	-	-	-	-	-	-	-	-	-			37.00	22.10
6101003			-	-	-	-	-	-	-	-	-	-	-			40.00	24.70
6101004			-	-	-	-	-	-	-	-	-	-	-			39.10	25.80
6101005			-	-	-	-	-	-	-	-	-	-	-			37.50	25.50
6101006			-	-	-	-	-	-	-	-	-	-	-			36.30	25.50
6101007			-	-	-	-	-	-	-	-	-	-	-			35.80	24.90
6101008			-	-	-	-	-	-	-	-	-	-	-			36.80	21.60
6101009			-	-	-	-	-	-	-	-	-	-	-			38.00	20.60

----- Other European moored buoys

WMO	Name	nobs	Wi	AT	AP	dP	ST	Wa	Ws	Dr	Sb	U	SS	O	Start_end	Lat	Lon
6100010	Italia-1		-	-	-	-	-	-	-	-	-	-	-			43.80	9.10
6200442	PAP	739	X	X	X	-	X	-	-	-	-	X	-	O	0110-3110	49.00	-16.40
6600021	Arkona Becken	737	X	X	-	-	X	-	-	-	-	-	-	O	0110-3110	54.90	13.90
6600022	Oder Bank	654	X	X	-	-	X	-	-	-	-	-	-	O	0110-3110	54.10	14.20
6600024	Darsser Schwell	489	S	S	-	-	S	S	-	-	-	-	-		0110-2310	54.70	12.70

----- Offshore moored buoys in the western part of the EUCOS area

WMO	Name	nobs	Wi	AT	AP	dP	ST	Wa	Ws	Dr	Sb	U	SS	O	Start_end	Lat	Lon
1300308	East Atlantic		-	-	-	-	-	-	-	-	-	-	-			15.00	-38.00
4100026		519	-	X	-	-	X	-	-	-	-	X	-	L	0110-3110	11.49	-38.40
4100040	West Atlantic	742	X	X	X	X	X	X	-	-	-	X	-	O	0110-3110	14.50	-53.00
4100041	Mid. Atlantic	740	X	X	X	X	X	X	-	-	-	X	-	O	0110-3110	14.50	-46.00
4100043	Porto Rico	732	X	-	X	X	X	X	-	-	-	-	-	O	0110-3110	21.00	-65.00
4100044		742	X	X	X	X	X	X	-	-	-	-	-	O	0110-3110	21.70	-58.70
4100046		743	X	X	X	X	X	X	-	-	-	X	-	O	0110-3110	23.90	-70.90
4100047			-	-	-	-	-	-	-	-	-	-	-			27.50	-71.50
4100048		739	X	X	X	X	X	X	-	-	-	X	-	O	0110-3110	32.00	-69.60
4100049		742	X	X	X	X	X	X	-	-	-	-	-	O	0110-3110	27.50	-53.00
4100139		523	X	X	X	-	X	-	-	-	-	X	-	L	0110-3110	20.02	-37.86
4100300	Antilles	677	X	X	X	X	X	X	-	-	-	X	-	T	0110-3110	15.85	-57.47
4200059	Caraibes	744	X	X	X	X	X	X	-	-	-	-	-	O	0110-3110	15.00	-67.50
4400008	A Nantucket		-	-	-	-	-	-	-	-	-	-	-			40.50	-69.40
4400011	D Georges Bk		-	-	-	-	-	-	-	-	-	-	-			41.10	-66.60
4400018	SE Cape Cod		-	-	-	-	-	-	-	-	-	-	-			41.30	-69.30
4400024	NNE Channel	732	X	X	X	-	X	X	-	-	-	-	-	O	0110-3110	42.30	-65.90
4400137	E Scotia Sl.	737	X	X	X	X	X	X	-	-	-	-	-	O	0110-3110	42.30	-62.00
4400138	SW Gd Banks		-	-	-	-	-	-	-	-	-	-	-			44.30	-53.60
4400139	Beanquereau	739	X	X	X	X	X	X	-	-	-	-	-	O	0110-3110	44.30	-57.10
4400140	Tail of Bk	469	S	S	S	S	S	S	-	-	-	-	-		0110-2210	43.80	-51.70
4400141	Larentian F	736	X	X	X	X	X	X	-	-	-	-	-	O	0110-3110	43.00	-58.00
4400150	La Have Bk	728	X	-	X	X	X	X	-	-	-	-	-	O	0110-3110	42.50	-64.00

E-SURFMAR DB Monthly Report October 2013

Buoy-QC statistics from Meteo-France model outputs

Datend : Date of the last value received on GTS
Recvd : Total number of values received on GTS
GE : Number of Gross Errors (excluded from bias and sd computations)
bias : Mean differences between observation values and co-located model output values
Std : Standard deviation of differences

Air Pressure (hPa), drifting buoys, October 2013

Datend	WMO	Telcom	Recvd	GE	Bias	Std
20131014	2500615	13409520	324	86	0.5	0.6
20131031	2500616	11549100	744	0	0.1	0.4
20131031	2500617	11540100	744	0	0.0	0.4
20131031	2500618	60244420	587	0	0.0	0.7
20131031	2500619	60276270	744	0	0.1	0.5
20131031	2500622	11540110	744	0	-0.0	0.5
20131031	2500623	60174700	744	0	0.1	0.4
20131031	2500624	60247420	744	0	0.3	0.4
20131031	2500648	60370080	744	0	-0.2	0.5
20131017	2500650	60378060	397	1	1.2	3.1
20131031	2500651	60568820	173	21	-0.7	1.6
20131031	2500652	60176700	740	0	-0.1	0.5
20131031	2600556	11549080	744	3	-0.1	0.7
20131007	2600557	11544090	164	1	-0.6	0.9
20131031	4100969	60213780	723	0	-0.5	0.5
20131031	4100970	60213790	744	0	0.1	0.5
20131031	4100971	60215900	744	0	-0.1	0.6
20131031	4100972	60217780	744	0	0.1	0.4
20131031	4400546	11160640	744	0	-0.3	0.4
20131025	4400548	11160660	587	0	-0.1	0.6
20131031	4400549	11025170	744	0	0.2	0.7
20131031	4400550	11545160	741	0	0.2	0.6
20131031	4400551	11027150	744	1	-0.2	0.7
20131031	4400602	11468700	744	0	-0.1	0.5
20131031	4400603	11540410	744	0	-0.2	0.5
20131031	4400605	11473110	744	0	-0.3	0.5
20131031	4400606	11687410	745	0	-0.2	0.4
20131031	4400607	11474110	744	0	-0.2	0.7
20131007	4400608	11681420	112	0	0.1	0.4
20131031	4400609	11686230	744	0	-0.3	0.6
20131031	4400611	11471110	744	0	-0.0	0.5
20131031	4400613	11475040	744	0	-0.2	0.5
20131031	4400616	11813550	744	0	0.0	0.5
20131031	4400617	11474100	744	11	0.0	0.6
20131030	4400622	11881820	700	0	-0.3	0.5
20131031	4400623	11167640	72	63	-0.3	2.1
20131031	4400624	11341110	742	0	-0.1	0.5
20131031	4400627	11028170	745	0	0.2	0.5
20131031	4400683	12366460	725	0	0.1	0.5
20131031	4400723	10825630	744	0	0.3	0.5
20131031	4400724	13300270	744	0	-0.4	0.6
20131031	4400725	11027170	744	3	-0.0	1.5
20131031	4400726	11023190	744	0	-0.6	0.7
20131031	4400728	11020190	744	0	-0.3	0.6
20131031	4400730	11846540	744	0	-0.1	0.5
20131031	4400740	11883820	744	0	-0.0	0.3
20131031	4400741	11688230	744	0	0.0	0.5
20131030	4400746	13357510	82	0	-0.0	0.4
20131031	4400760	11880820	744	0	-0.0	0.5
20131031	4400762	11244970	739	0	-0.1	0.6
20131031	4400763	11683410	744	0	-0.1	0.7
20131031	4400764	11688400	744	0	-0.4	0.5
20131031	4400765	11685410	744	0	-0.2	0.5
20131031	4400767	11919510	744	0	0.0	0.4
20131031	4400769	60210790	656	0	-0.0	0.5
20131031	4400770	11798230	741	0	0.0	0.5
20131031	4400771	60507000	744	0	-0.1	0.7
20131031	4400773	60211790	690	0	-0.2	0.6
20131031	4400774	11460700	744	0	0.1	0.7
20131031	4400775	11540170	744	0	-0.3	0.9
20131031	4400777	11885820	744	0	0.0	0.5
20131031	4400778	11463700	744	0	-0.3	0.5

E-SURFMAR DB Monthly Report October 2013

20131023	4400779	11885820	550	0	-0.1	0.5
20131022	4400780	11880840	513	0	0.0	0.4
20131031	4400863	60211690	744	0	-0.0	0.6
20131031	4400865	11022610	744	3	0.5	1.2
20131031	4400868	11794230	744	0	0.0	0.5
20131031	4400869	11026040	744	0	0.3	0.4
20131031	4400870	60210460	744	0	-0.2	0.5
20131031	4400871	11025180	744	0	-1.0	0.5
20131031	4400872	11027700	744	27	0.7	0.6
20131031	4400873	11022600	744	0	0.4	0.5
20131031	4400874	60213460	744	0	-0.1	0.6
20131031	4400875	11021610	744	0	0.6	0.6
20131031	4800662	10822620	744	0	1.1	1.0
20131031	4800663	10822640	744	0	0.3	0.5
20131031	6100691	11249940	740	0	0.0	0.5
20131031	6200507	11288550	742	0	0.3	0.7
20131031	6200508	10759040	742	0	0.6	0.5
20131031	6200512	11687230	744	0	-0.1	0.4
20131031	6200514	60203700	744	0	0.0	0.5
20131031	6200515	11795230	744	0	-0.0	0.5
20131031	6200516	11475100	744	0	-0.0	0.4
20131031	6200520	13611180	743	0	0.1	0.4
20131031	6200522	11680430	744	0	-0.2	0.5
20131007	6200531	11548410	150	59	-0.8	1.9
20131001	6200532	11566230	23	0	-0.4	0.2
20131022	6200533	11684410	174	0	-0.2	0.5
20131031	6200534	11683400	744	0	-0.3	0.5
20131031	6200553	11165650	744	0	0.1	0.4
20131031	6200556	11021170	743	0	0.4	0.4
20131031	6200678	11029050	744	0	0.0	0.6
20131031	6200680	11166640	744	0	-0.2	0.6
20131031	6200681	11168640	744	0	-0.1	0.4
20131031	6200684	11882820	744	0	-0.3	0.5
20131031	6200686	11845450	744	0	-0.3	0.5
20131031	6200687	11349100	744	0	-0.1	0.6
20131031	6200695	60408990	743	0	0.0	0.5
20131031	6200712	11799220	739	0	0.1	0.7
20131031	6200713	11246980	731	0	0.0	0.4
20131031	6200714	11240980	732	0	-0.0	0.4
20131031	6300551	11547410	645	0	-0.3	0.4
20131028	6300552	11548400	662	35	-0.7	2.2
20131031	6300554	11549410	744	0	-0.3	0.4
20131031	6300635	11477140	744	1	-0.6	1.6
20131031	6300636	60278250	744	0	-0.1	0.4
20131028	6300637	60276250	662	16	-0.3	1.8
20131031	6300639	11471050	479	1	-0.4	1.8
20131031	6300640	60172710	744	0	0.6	0.7
20131031	6300642	11548080	731	0	0.1	0.5
20131031	6400516	11473100	744	0	-0.2	0.5
20131031	6400517	11476100	744	0	-0.3	0.4
20131031	6400518	11472110	744	1	-0.3	0.5
20131031	6400519	11547420	744	0	-0.3	0.4
20131031	6400520	11479040	744	0	-0.2	0.4
20131031	6400521	11470030	744	0	-0.2	0.4
20131031	6400522	11029150	744	0	-0.1	0.5
20131004	6400524	10825640	89	0	0.3	0.5
20131031	6400525	60175710	744	0	-0.2	0.4
20131031	6400526	60175700	744	0	-0.1	0.4
20131031	6400527	11549160	744	0	-0.3	0.5
20131031	6400606	11478100	744	0	-0.2	0.4
20131031	6400607	11479100	744	0	-0.1	0.4
20131031	6400609	11379950	744	0	-0.1	0.3
20131031	6400611	11548420	744	0	0.3	0.5
20131031	6400613	60174710	744	0	-0.1	0.6
20131031	6400614	60178700	744	0	0.0	0.5
20131031	6400619	11547420	744	3	-0.9	1.1
20131031	6400620	11756730	744	11	-0.0	1.2
20131031	6400621	60170720	672	0	0.0	0.4
20131031	6400622	60172810	744	0	-0.1	0.4
20131031	6400623	11470040	744	0	0.2	0.6
20131031	6500592	11164650	744	0	-0.2	0.5

**E-SURFMAR DB Monthly Report
October 2013**

Air Pressure (hPa), moored buoys, October 2013

Datend	WMO	Telcom	Recvd	GE	Bias	Std
20131031	1200050		744	0	0.1	0.5
20131031	1300131		738	0	0.5	0.7
20131031	6100001		736	1	-0.3	0.5
20131031	6100002		617	2	-0.3	0.6
20131031	6100197		744	0	1.1	0.7
20131016	6100207		38	0	-1.8	0.7
20131031	6100208		157	0	-0.8	0.5
20131031	6100209		1023	0	-0.4	0.6
20131031	6100210		1479	0	0.7	0.6
20131031	6100211		1480	0	0.2	0.6
20131031	6100213		1479	0	0.8	0.5
20131031	6100214		1469	0	0.2	0.5
20131018	6100215		839	0	1.7	0.5
20131031	6100216		1315	0	-1.3	0.9
20131023	6100218		336	0	0.6	0.6
20131023	6100219		1044	0	-0.1	0.5
20131031	6100220		1244	0	-0.1	0.6
20131031	6100221		1327	0	-0.2	0.6
20131031	6100280		744	0	0.4	0.7
20131031	6100281		744	0	0.3	0.7
20131031	6100417		710	0	0.4	0.7
20131031	6100430		727	0	0.3	0.8
20131031	6200001		744	0	0.2	0.5
20131031	6200024		726	0	0.5	0.6
20131031	6200025		742	0	0.4	0.7
20131031	6200029		738	0	0.1	0.6
20131031	6200081		743	0	-0.1	0.5
20131017	6200082		12	0	-0.3	0.4
20131031	6200083		744	0	0.4	0.7
20131030	6200084		642	0	-0.5	0.7
20131031	6200085		744	0	0.6	0.7
20131031	6200091		741	0	-0.3	0.6
20131031	6200093		743	2	0.1	0.7
20131031	6200094		743	2	-0.1	0.7
20131031	6200095		744	5	0.0	0.8
20131031	6200105		743	0	0.0	0.6
20131031	6200163		744	0	0.2	0.5
20131031	6400045		742	0	0.2	0.5
20131031	6400046		741	0	0.0	0.8

Air Temperature (C), moored buoys, October 2013

Datend	WMO	Telcom	Recvd	GE	Bias	Std
20131031	1300131		738	0	0.9	0.5
20131031	6100001		736	0	-0.4	0.8
20131031	6100002		617	0	0.3	0.8
20131008	6100197		177	0	-3.1	1.1
20131031	6100280		738	0	0.4	0.5
20131031	6100281		743	0	0.2	0.6
20131031	6100417		707	0	-0.0	0.5
20131031	6100430		725	0	0.3	0.5
20131031	6200001		744	0	-0.3	0.6
20131031	6200024		726	0	0.5	0.7
20131031	6200025		741	0	-0.5	0.8
20131031	6200029		738	0	-0.4	0.6
20131031	6200081		743	0	-0.4	0.5
20131017	6200082		14	0	0.2	0.4
20131031	6200083		744	0	-0.1	0.7
20131030	6200084		637	0	0.2	0.6
20131031	6200085		742	0	-0.1	0.5
20131031	6200091		741	0	0.1	0.4
20131031	6200093		743	0	-0.0	0.5
20131031	6200094		743	0	0.3	0.4
20131031	6200095		695	0	-0.2	0.6
20131031	6200105		743	0	-0.3	0.5
20131031	6200163		744	0	-0.5	0.5
20131031	6400045		742	0	-0.1	0.6
20131031	6400046		741	0	-0.2	0.5
20131031	6600021		736	1	0.2	0.5

E-SURFMAR DB Monthly Report October 2013

20131031	6600022	654	0	0.4	0.8
20131023	6600024	489	0	0.4	0.5

Wind direction (deg.), moored buoys, October 2013

Datend	WMO	Telcom	Recvd	GE	Bias	Std
20131031	1300131		732	62	-1	31
20131031	6100001		735	30	3	27
20131031	6100002		560	14	-1	23
20131031	6100197		737	9	-11	21
20131031	6100280		720	42	1	30
20131031	6100281		731	51	5	35
20131031	6100417		692	40	-10	26
20131031	6100430		703	17	-10	31
20131031	6200001		744	2	-0	19
20131031	6200024		712	23	-4	31
20131031	6200025		730	60	4	40
20131031	6200029		737	1	-6	17
20131031	6200081		743	9	-4	16
20131014	6200082		13	1	6	26
20131031	6200083		744	17	4	17
20131030	6200084		639	6	10	17
20131031	6200085		739	24	-12	24
20131031	6200091		741	2	2	14
20131031	6200093		743	0	4	13
20131031	6200094		742	1	1	12
20131031	6200105		743	4	-3	15
20131031	6200163		744	1	-7	17
20131031	6400045		741	6	-0	17
20131031	6400046		741	4	5	18
20131031	6600021		734	9	-3	13
20131031	6600022		652	4	-11	15
20131023	6600024		489	9	0	21

Wind speed rate, moored buoys, October 2013

Datend	WMO	Telcom	Recvd	GE	Rate	Err
20131031	1300131		732	0	1.0	2.2
20131031	6100001		735	1	1.2	2.0
20131031	6100002		560	0	1.2	1.6
20131031	6100197		737	0	1.0	1.3
20131031	6100280		720	0	1.1	1.6
20131031	6100281		731	0	1.5	1.7
20131031	6100417		692	0	1.1	1.4
20131031	6100430		703	0	1.2	1.8
20131031	6200001		744	0	1.0	1.5
20131031	6200024		712	0	1.1	1.7
20131031	6200025		730	0	1.0	2.5
20131031	6200029		737	1	1.0	1.2
20131031	6200081		743	1	0.9	1.4
20131013	6200082		12	0	1.2	2.5
20131031	6200083		744	6	0.9	1.8
20131030	6200084		639	0	1.0	1.8
20131031	6200085		739	0	1.0	1.4
20131031	6200091		741	0	0.8	1.9
20131031	6200093		743	0	0.9	1.5
20131031	6200094		742	1	0.9	1.4
20131031	6200105		743	1	1.0	1.4
20131031	6200163		744	0	1.0	1.7
20131031	6400045		741	1	1.0	1.1
20131031	6400046		741	1	1.1	1.6
20131031	6600021		734	0	1.1	1.3
20131031	6600022		652	1	1.2	1.3
20131023	6600024		489	0	1.2	1.4

Comments on QC statistics :

Air pressure

1. Air pressure measurements failed on the last ICEB buoy deployed in the Arctic two years ago (WMO **2500615**)
2. The GTS data transmission of air pressure was stopped for buoys WMO **2500650** and **2500651**, after they were found unreliable. The buoys were rehabilitated later after the measurements came back correct (4th of November and 27th of October, respectively). The problem is probably due to ice covering the barometer port temporarily.
3. Metocean buoys WMO **4400617**, **4400872** and **6400620** reported some wrong pressure data onto the GTS in October but the transmission was not stopped.
4. By mistake, a few wrong air pressure data were transmitted onto the GTS for Metocean buoy WMO **4400623**.
5. The GTS data transmission of air pressure was stopped for buoys WMO **6300552** and **6300637**, after they were found unreliable. The buoys were rehabilitated later after the measurements came back correct (4th of November and 28th of October, respectively). However, buoy WMO 6300637 stopped transmitting on the 4th of November after having reported wrong pressure and SST data for an unknown reason.
6. Air pressure values reported by Italian moored buoy WMO **6100215** seem still systematically biased for about 2 hPa. Moored buoy WMO **6100207** also reported a few biased data in October.

Air temperature

7. The GTS data transmission of air temperature was stopped for Spanish moored buoy WMO **6100197**. They were systematically biased for about -3.5°C.

Monthly QC statistics and other data quality control tools are available on line at :

<http://www.meteo.shom.fr/qctools/>

The working area of the E-SURFMAR website is open at <http://esurfmar.meteo.fr/wikisurf-wa/> . Ask the E-SURFMAR Programme Manager Pierre.Blouch@meteo.fr for the password in case you forgot it. Graphs of system performances may be displayed/downloaded at http://esurfmar.meteo.fr/doc/r/surfmar/others/e-surfmar_monitoring.pdf.