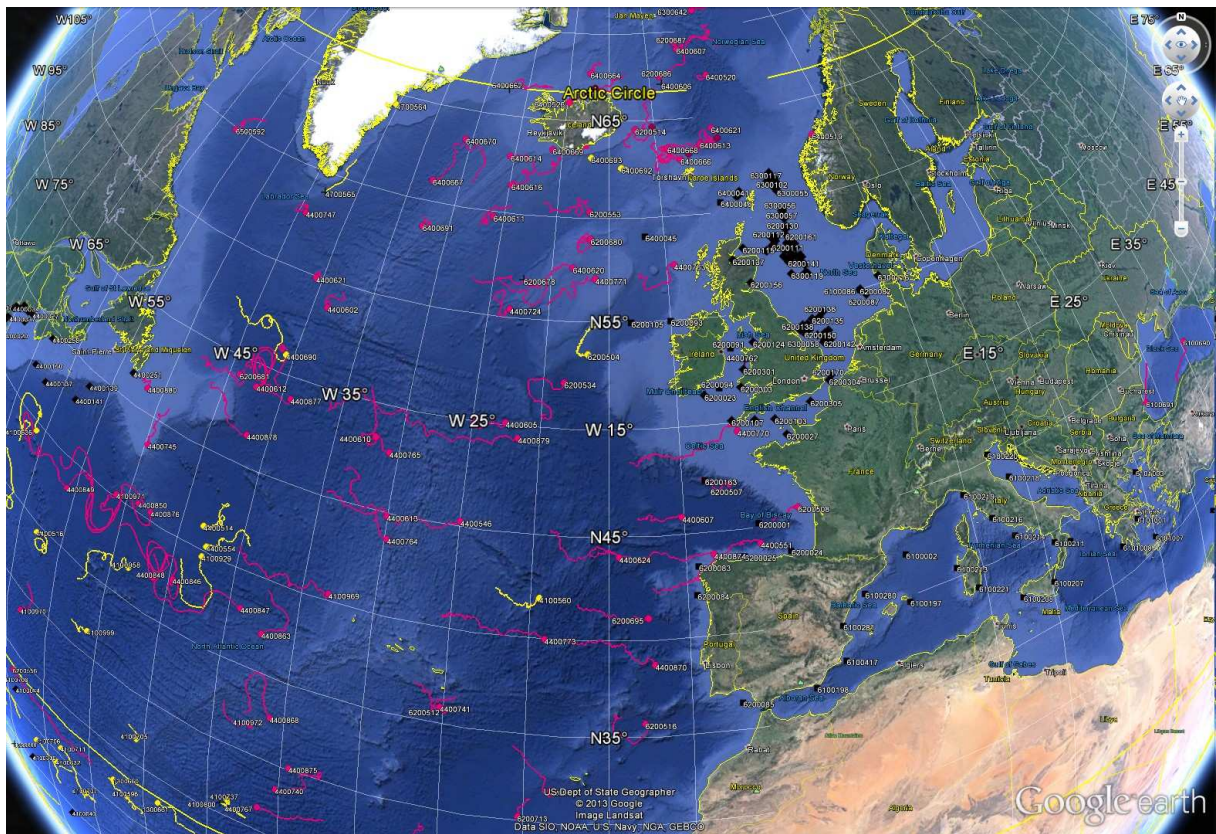


DATA BUOY MONTHLY REPORT

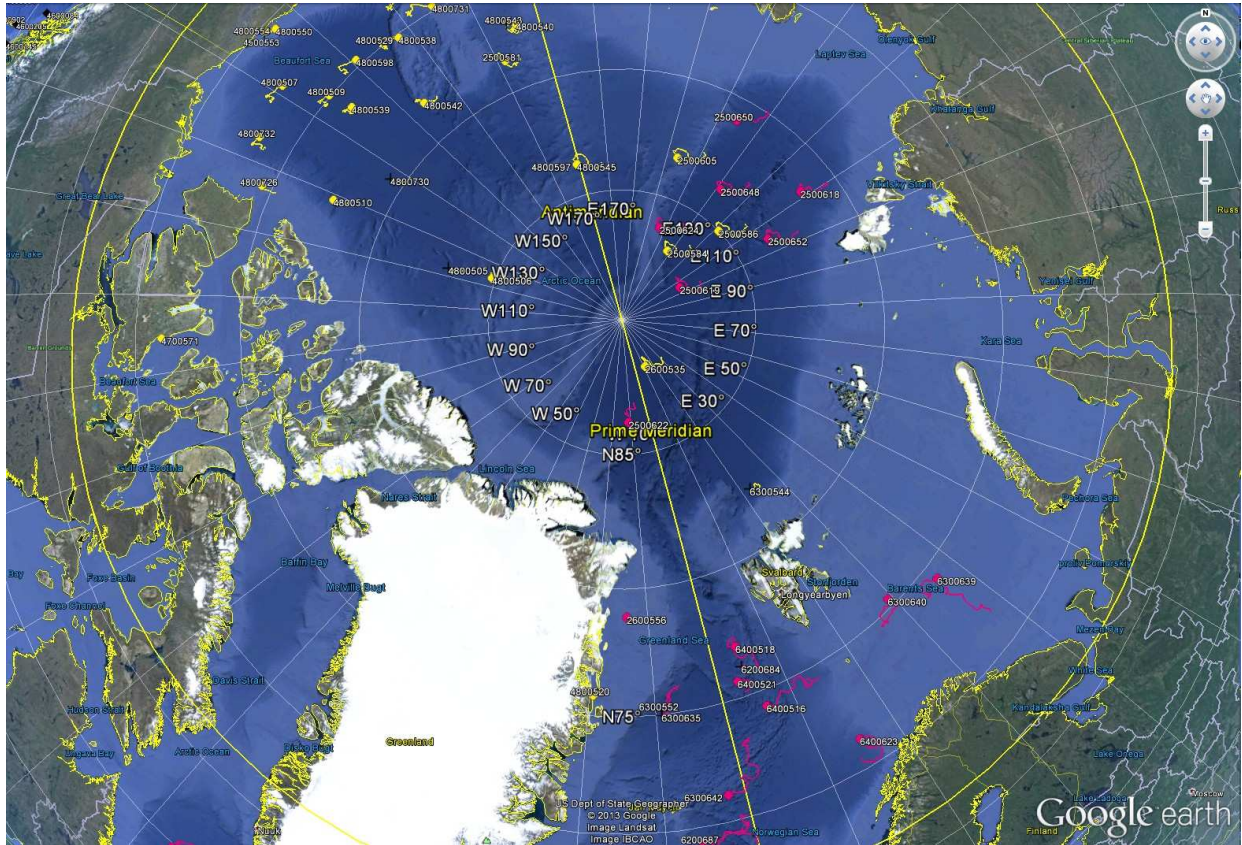
February 2014



*February 2014 : Operating data buoys in the North Atlantic
Drifting buoy trajectories : E-SURFMAR (red), others (yellow)
Moored buoy positions (black)*

*Most recent trajectories may be seen at:
http://www.meteo.shom.fr/cartographie/data/kml/MeteoFrance_buoys_map_15.kmz*

**E-SURFMAR DB Monthly Report
February 2014**



*February 2014
Drifting buoy trajectories in Arctic Ocean and adjacent seas : E-SURFMAR (red), others (yellow)*

DRIFTING BUOYS

Network status

By the end of February, **99 Drifting buoys**, reporting air pressure onto the GTS, were in operation in the frame of E-SURFMAR. Out of these, 73 were E-SURFMAR funded Iridium SVP-Bs, including 8 in the Arctic and 6 HRSST-2 buoys. The remaining buoys were: 24 Iridium drifters owned by NOAA and upgraded with barometers by E-SURFMAR and 2 Iridium buoys owned by an external partner, Marlin Yug, in the Black Sea. E-SURFMAR is funding the communication for these latter : another opportunity to evaluate the products of this manufacturer and to have buoys in operation in the Black Sea.

These buoys included one, gently ashore, which reports reliable pressure onto the GTS from the Norwegian coast: WMO 6400519.

Information about the availability of buoys for future deployments may be get from the E-SURFMAR wikisite (working area) at: http://esurfmar.meteo.fr/wikisurf-wa/index.php/Availability_of_drifting_buoys

Besides E-SURFMAR buoys, 30 drifting buoys were reporting at least air pressure observations from the EUMETNET area of interest. Out of these, 3 were reporting Sea Surface Salinity, some in the frame of Spurs/Strasse campaign (validation of SMOS and Aquarius remote SSS measurements).

Drifting buoys - New deployments

WMO	Telcom	Typ	Ow	Dep_Date	DepLat	DepLon	From	Comment
4400877	60526170	PSB	UP	20140204	49.2	-42.0	Norfolk	Atlantic Concert
4400878	60528170	PSB	UP	20140204	48.2	-46.0	Norfolk	Atlantic Concert
4400879	60554620	PSB	UP	20140205	50.7	-33.0	Norfolk	Atlantic Concert
4400880	60656880	PSB	UP	20140203	46.5	-52.0	Norfolk	Atlantic Concert
6400670	61513850	MSB	EU	20140207	61.0	-29.4	Reykjavik	Skogafoss
6400691	61514870	MSB	EU	20140208	59.0	-33.0	Reykjavik	Skogafoss
6400692	60172720	MSB	EU	20140221	62.7	-12.0	Rotterdam	Bruarfoss
6400693	60173720	MSB	EU	20140227	63.1	-17.0	Rotterdam	Bruarfoss
	61613040	MSB	EU	20140209	57.0	-36.8	Reykjavik	Skogafoss

Operating drifting buoys in North Atlantic by the end of the month

WMO	Telcom	Typ	Ow	nobs	Wi	AT	AP	dP	ST	Wa	Ws	Dr	Sb	U	SS	O	Start_end	Lat	Lon	Age
2500618	64244420	MSB	EU	672	-	-	X	X	S	-	-	X	-	-	-	T	0102-2802	81.52	111.62	186
2500619	60276270	MSB	EU	672	-	-	X	X	S	-	-	X	-	-	-	T	0102-2802	87.52	104.76	184
2500622	11540110	MSB	EU	672	-	-	X	X	-	-	-	X	-	-	-	T	0102-2802	86.19	-11.26	543
2500624	60247420	MSB	EU	672	-	-	X	X	S	-	-	X	-	-	-	T	0102-2802	86.20	143.09	182
2500648	67370080	MSB	EU	672	-	-	X	X	S	-	-	X	-	-	-	T	0102-2802	83.72	128.54	173
2500650	60378060	MSB	EU	672	-	-	X	X	S	-	-	X	-	-	-	T	0102-2802	80.98	135.71	176
2500652	60176700	MSB	EU	672	-	-	X	X	S	-	-	X	-	-	-	T	0102-2802	83.65	104.84	170
2600556	11549080	MSB	EU	672	-	-	X	X	-	-	-	X	-	-	-	T	0102-2802	78.93	-14.04	524
4100969	60213780	PSB	UP	672	-	-	X	X	X	-	-	X	-	-	-	T	0102-2802	40.38	-33.12	205
4100970	60213790	PSB	UP	634	-	-	X	X	X	-	-	X	-	-	-	T	0102-2802	28.70	-58.06	204
4100971	60215900	PSB	UP	580	-	-	X	X	X	-	-	X	-	-	-	T	0102-2802	40.22	-50.98	204
4100972	60217780	PSB	UP	672	-	-	X	X	X	-	-	X	-	-	-	T	0102-2802	31.86	-37.20	204
4400546	11160640	MSB	EU	672	-	-	X	X	X	-	-	X	-	-	-	T	0102-2802	45.27	-24.95	346
4400551	11027150	MSB	EU	672	-	-	X	X	-	-	-	X	-	-	-	T	0102-2802	44.23	-5.03	754
4400602	11468700	MSB	UP	672	-	-	X	X	X	-	-	X	-	-	-	T	0102-2802	53.73	-38.56	344
4400605	11473110	MSB	EU	672	-	-	X	X	X	-	-	X	-	-	-	T	0102-2802	50.11	-22.54	294
4400607	11474110	MSB	EU	672	-	-	X	X	X	-	-	X	-	-	-	T	0102-2802	45.84	-10.13	295
4400610	61517860	MSB	EU	672	-	-	X	X	X	-	-	X	-	-	-	T	0102-2802	48.43	-31.87	81
4400612	61511880	MSB	EU	671	-	-	X	X	X	-	-	X	-	-	-	T	0102-2802	48.92	-42.23	69
4400613	11475040	MSB	EU	672	-	-	X	X	X	-	-	X	-	-	-	T	0102-2802	44.86	-30.02	360
4400621	61519840	MSB	EU	425	-	-	X	X	X	-	-	X	-	-	-	T	1002-2802	54.90	-40.51	20
4400624	11341110	YSB	EU	668	-	-	X	X	X	-	-	X	-	-	-	T	0102-2802	44.05	-14.35	445
4400724	13300270	MSB	EU	672	-	-	X	X	X	-	-	X	-	-	-	T	0102-2802	55.39	-23.21	615
4400740	11883820	PSB	UP	672	-	-	X	X	X	-	-	X	-	-	-	T	0102-2802	28.50	-35.17	601
4400741	11688230	MSB	EU	672	-	-	X	X	X	-	-	X	-	-	-	T	0102-2802	35.95	-25.17	525

E-SURFMAR DB Monthly Report February 2014

4400745	60899120	MSB	EU	672	-	-	X	X	X	-	-	X	-	-	-	T	0102-2802	43.62	-49.64	80
4400747	61610060	MSB	EU	601	-	-	X	X	X	-	-	X	-	-	-	T	0102-2802	57.73	-44.15	66
4400763	11683410	MSB	EU	260	-	-	X	X	X	-	-	X	-	-	-	T	0502-2802	57.63	-9.33	360
4400764	11688400	MSB	EU	672	-	-	X	X	X	-	-	X	-	-	-	T	0102-2802	43.77	-29.76	337
4400765	11685410	MSB	EU	672	-	-	X	X	X	-	-	X	-	-	-	T	0102-2802	47.85	-30.63	337
4400767	11919510	MSB	EU	672	-	-	X	X	X	-	-	X	-	-	-	T	0102-2802	26.80	-36.35	764
4400770	11798230	MSB	E2	672	-	-	X	X	X	-	-	X	-	-	-	T	0102-2802	49.59	-5.76	372
4400771	60507000	MSB	E2	672	-	-	X	X	X	-	-	X	-	-	-	T	0102-2802	57.04	-16.20	372
4400773	60211790	PSB	UP	672	-	-	X	X	X	-	-	X	-	-	-	T	0102-2802	40.02	-18.99	230
4400846	60441290	DSB	UP	669	-	-	X	X	X	-	-	X	-	-	-	T	0102-2802	37.79	-44.52	34
4400847	60442280	DSB	UP	670	-	-	X	X	X	-	-	X	-	-	-	T	0102-2802	38.05	-39.04	34
4400848	60448280	DSB	UP	671	-	-	X	X	X	-	-	X	-	-	-	T	0102-2802	37.27	-46.10	33
4400849	60640340	DSB	UP	671	-	-	X	X	X	-	-	X	-	-	-	T	0102-2802	38.48	-55.77	35
4400863	60211690	PSB	UP	644	-	-	X	X	X	-	-	X	-	-	-	T	0102-2802	37.18	-37.27	228
4400868	11794230	MSB	E2	670	-	-	X	X	X	-	-	X	-	-	-	T	0102-2802	32.74	-35.91	297
4400869	11026040	MSB	EU	672	-	-	X	X	X	-	-	X	-	-	-	T	0102-2802	27.25	-26.76	730
4400870	60210460	PSB	UP	672	-	-	X	X	X	-	-	X	-	-	-	T	0102-2802	38.77	-12.20	228
4400874	60213460	PSB	UP	672	-	-	X	X	X	-	-	X	-	-	-	T	0102-2802	43.98	-8.17	228
4400875	11021610	MSB	EU	672	-	-	X	X	X	-	-	X	-	-	-	T	0102-2802	30.16	-34.37	714
4400876	60648350	DSB	UP	671	-	-	X	X	X	-	-	X	-	-	-	T	0102-2802	40.50	-47.61	34
4400877	60526170	PSB	UP	584	-	-	X	X	X	-	-	X	-	-	-	T	0402-2802	48.97	-39.13	25
4400878	60528170	PSB	UP	595	-	-	X	X	X	-	-	X	-	-	-	T	0402-2802	46.53	-41.73	25
4400879	60554620	PSB	UP	562	-	-	X	X	X	-	-	X	-	-	-	T	0502-2802	49.43	-21.54	24
4400880	60656880	PSB	UP	605	-	-	X	X	X	-	-	X	-	-	-	T	0302-2802	46.18	-51.50	26
6100690	11248990	YST	UA	661	-	-	X	X	X	-	-	X	-	-	-	T	0102-2802	43.42	35.33	101
6100691	11249940	YST	UA	662	-	-	X	X	X	-	-	X	-	-	-	T	0102-2802	42.72	28.19	161
6200507	11288550	DSB	UP	669	-	-	X	X	X	-	-	X	-	-	-	T	0102-2802	47.19	-6.77	306
6200508	10759040	DSB	UP	666	-	-	X	X	X	-	-	X	-	-	-	T	0102-2802	45.63	-2.21	304
6200512	11687230	MSB	EU	672	-	-	X	X	X	-	-	X	-	-	-	T	0102-2802	35.80	-24.89	297
6200514	60203700	MSB	E2	672	-	-	X	X	X	-	-	X	-	-	-	T	0102-2802	64.54	-12.13	372
6200516	11475100	MSB	EU	670	-	-	X	X	X	-	-	X	-	-	-	T	0102-2802	35.76	-12.86	298
6200520	13611180	MSB	EU	672	-	-	X	X	X	-	-	X	-	-	-	T	0102-2802	25.61	-75.42	752
6200534	11683400	MSB	EU	672	-	-	X	X	X	-	-	X	-	-	-	T	0102-2802	52.14	-18.40	157
6200553	11165650	MSB	EU	672	-	-	X	X	X	-	-	X	-	-	-	T	0102-2802	60.30	-16.87	342
6200556	11021170	MSB	EU	672	-	-	X	X	X	-	-	X	-	-	-	T	0102-2802	23.28	-58.76	724
6200680	11166640	MSB	EU	672	-	-	X	X	X	-	-	X	-	-	-	T	0102-2802	58.95	-16.69	469
6200681	11168640	MSB	EU	672	-	-	X	X	X	-	-	X	-	-	-	T	0102-2802	49.14	-43.96	470
6200686	11845450	MSB	E2	672	-	-	X	X	-	-	X	-	-	-	-	T	0102-2802	67.41	-8.71	595
6200687	11349100	YSB	EU	672	-	-	X	X	X	-	-	X	-	-	-	T	0102-2802	69.30	-5.99	449
6200695	60408990	MSB	E2	672	-	-	X	X	X	-	-	X	-	-	-	T	0102-2802	41.10	-12.56	298
6200713	11246980	YSB	EU	664	-	-	X	X	X	-	-	X	-	-	-	T	0102-2802	30.33	-20.29	444
6200714	11240980	YSB	EU	662	-	-	X	X	X	-	-	X	-	-	-	T	0102-2802	32.00	-18.44	441
6300639	11471050	MSB	EU	672	-	-	X	X	X	-	-	X	-	-	-	T	0102-2802	74.34	36.49	477
6300640	60172710	MSB	EU	672	-	-	X	X	X	-	-	X	-	-	-	T	0102-2802	75.33	29.26	199
6300642	11548080	MSB	EU	672	-	-	X	X	X	-	-	X	-	-	-	T	0102-2802	71.20	-2.11	621
6400516	11473100	MSB	EU	672	-	-	X	X	X	-	-	X	-	-	-	T	0102-2802	74.35	5.88	507
6400518	11472110	MSB	EU	672	-	-	X	X	X	-	-	X	-	-	-	T	0102-2802	77.03	4.39	507
6400519	11547420	MSB	UP	672	-	-	X	X	-	-	X	-	-	-	-	T	0102-2802	63.05	7.40	301
6400520	11479040	MSB	EU	672	-	-	X	X	X	-	-	X	-	-	-	T	0102-2802	67.25	-2.68	294
6400521	11470030	MSB	EU	666	-	-	X	X	X	-	-	X	-	-	-	T	0102-2802	75.69	2.99	292
6400525	60175710	MSB	EU	672	-	-	X	X	X	-	-	X	-	-	-	T	0102-2802	63.77	-3.20	196
6400526	60175700	MSB	EU	672	-	-	X	X	X	-	-	X	-	-	-	T	0102-2802	66.00	-19.76	196
6400607	11479100	MSB	EU	672	-	-	X	X	X	-	-	X	-	-	-	T	0102-2802	68.93	-5.78	478
6400611	11548420	MSB	UP	672	-	-	X	X	X	-	-	X	-	-	-	T	0102-2802	59.76	-25.94	239
6400613	60174710	MSB	EU	672	-	-	X	X	X	-	-	X	-	-	-	T	0102-2802	63.59	-5.18	181
6400614	60178700	MSB	EU	672	-	-	X	X	X	-	-	X	-	-	-	T	0102-2802	62.88	-25.40	177
6400615	60173700	MSB	EU	672	-	-	X	X	X	-	-	X	-	-	-	T	0102-2802	63.10	-6.60	112
6400616	60178710	MSB	EU	672	-	-	X	X	X	-	-	X	-	-	-	T	0102-2802	61.42	-24.77	111
6400620	11756730	MSB	UP	672	-	-	X	X	X	-	-	X	-	-	-	T	0102-2802	57.55	-18.16	638
6400621	60170720	MSB	EU	672	-	-	X	X	X	-	-	X	-	-	-	T	0102-2802	64.33	-3.61	195
6400622	60172810	MSB	EU	672	-	-	X	X	X	-	-	X	-	-	-	T	0102-2802	66.41	-10.33	197
6400623	11470040	MSB	EU	672	-	-	X	X	X	-	-	X	-	-	-	T	0102-2802	71.33	15.22	293
6400663	60175810	MSB	EU	672	-	-	X	X	X	-	-	X	-	-	-	T	0102-2802	66.82	-16.75	95
6400664	60176710	MSB	EU	672	-	-	X	X	X	-	-	X	-	-	-	T	0102-2802	67.66	-17.41	95
6400665	60171710	MSB	EU	672	-	-	X	X	X	-	-	X	-	-	-	T	0102-2802	64.64	-10.22	93
6400666	60179710	MSB	EU	672	-	-	X	X	X	-	-	X	-	-	-	T	0102-2802	62.84	-7.52	93
6400667	61615060	MSB	EU	531	-	-	X	X	X	-	-	X	-	-	-	T	0102-2802	61.05	-32.81	65
6400668	60177860	MSB	EU	672	-	-	X	X	X	-	-	X	-	-	-	T	0102-2802	63.48	-8.76	69
6400669	60177710	MSB	EU	672	-	-	X	X	X	-	-	X	-	-	-	T	0102-2802	63.41	-21.05	65
6400670	61513850	MSB	EU	440	-	-	X	X	X	-	-	X	-	-	-	T	1002-2802	63.44	-30.68	22
6400691	61514870	MSB	EU	442	-	-	X	X	X	-	-	X	-	-	-	T	1002-2802	58.73	-32.42	21
6400692	60172720	MSB	EU	82	-	-	X	X	X	-	-	X	-	-	-	T	2502-2802	62.53	-13.77	8
6400693	60173720	MSB	EU	10	-	-	X	X	X	-	-	X	-	-	-	T	2802-2802	63.06	-16.89	2
6500592	11164650	MSB	EU	672	-	-	X	X	X	-	-	X	-	-	-	T	0102-2802	59.87	-57.03	470

E-SURFMAR DB Monthly Report February 2014

Drifting buoys which ceased to be operational

WMO	Telcom	Typ	Ow	End_Date	Lat	Lon	Age	Cause
4400725	11027170	MSB	EU	20140216	24.6	-28.8	604	Wrong AP measurements from 16 th to 26 th Feb.
4400762	11244970	YSB	EU	20140203	52.8	-4.5	415	Ashore in Wales
4400850	60648340	DSB	UP	20140228	40.5	-48.8	34	Wrong AP - Rehabilitated on 4 th March
6200678	11029050	MSB	EU	20140219	56.9	-22.3	732	Faded (batteries empty)
6200684	11882820	PSB	UP	20140202	76.2	4.2	570	Faded (batteries empty)
6300552	11548400	MSB	UP	20140206	75.2	-9.1	561	Unknown
6300635	11477140	MSB	EU	20140206	75.0	-9.2	484	Unknown
6400606	11478100	MSB	EU	20140207	67.0	-8.5	457	Unknown
6400662	11475110	MSB	EU	20140226	66.5	-27.3	94	Unknown

Non-operating drifting buoys reporting GTS data

WMO	Telcom	Typ	Ow	nobs	Wi	AT	AP	dP	ST	Wa	Ws	Dr	Sb	U	SS	O	Start_end	Lat	Lon	Age
4400725	11027170	MSB	EU	672	-	-	S	S	X	-	-	X	-	-	-	T	0102-2802	24.61	-28.83	616
4400850	60648340	DSB	UP	670	-	-	S	S	X	-	-	X	-	-	-	T	0102-2802	40.53	-48.85	34

Other operating drifting buoys into the EUCOS area of interest by the end of the month

WMO	Telcom	Typ	Ow	nobs	Wi	AT	AP	dP	ST	Wa	Ws	Dr	Sb	U	SS	O	Start_end	Lat	Lon
1300600	43869	AOML		666	-	-	X	X	-	-	-	X	-	-	-	L	0102-2802	26.05	-68.34
1300659	11910180	UKMO		672	-	-	X	X	X	-	-	X	-	-	-	T	0102-2802	25.16	-31.62
1300660	11022040	UKMO		670	-	-	X	X	X	-	-	X	-	-	-	T	0102-2802	22.46	-47.66
1300662	11098800	UKMO		656	-	-	X	X	X	-	-	X	-	-	-	T	0102-2802	25.87	-24.25
1300664	11090810	UKMO		672	-	-	X	X	X	-	-	X	-	-	-	T	0102-2802	24.66	-29.11
1300665	11091810	UKMO		663	-	-	X	X	X	-	-	X	-	-	-	T	0102-2802	18.40	-69.57
2600535		EC		672	-	X	X	X	-	-	-	-	-	-	-	O	0102-2802	88.07	11.61
4100560	114550	AOML		666	-	-	X	-	-	-	-	X	-	-	-	L	0102-2802	42.01	-19.42
4100596	11473050	AOMF		672	-	-	X	X	X	-	-	X	-	-	-	T	0102-2802	21.91	-46.41
4100632	11546410	AOMF		672	-	-	X	X	X	-	-	X	-	-	-	T	0102-2802	19.15	-53.77
4100636	11568080	AOMF		672	-	-	X	X	X	-	-	X	-	-	-	T	0102-2802	39.63	-60.95
4100705	11596570	AOMF		672	-	-	X	X	X	-	-	X	-	-	-	T	0102-2802	26.99	-45.60
4100706	11595580	AOMF		672	-	-	X	X	X	-	-	X	-	-	-	T	0102-2802	19.00	-56.19
4100707	11590580	AOMF		672	-	-	X	X	X	-	-	X	-	-	-	T	0102-2802	18.91	-50.53
4100708	11585510	AOMF		672	-	-	X	X	X	-	-	X	-	-	-	T	0102-2802	20.43	-63.23
4100709	11598570	AOMF		672	-	-	X	X	X	-	-	X	-	-	-	T	0102-2802	21.02	-60.36
4100711	11477030	AOMF		672	-	-	X	X	X	-	-	X	-	-	-	T	0102-2802	21.07	-53.01
4100734	60215910	LOCE		1344	-	-	X	X	X	-	-	X	-	-	X	T	0102-2802	11.38	-43.86
4100736	60215450	LOCE		1344	-	-	X	X	X	-	-	X	-	-	X	T	0102-2802	13.72	-44.42
4100737	60342390	CMM		424	-	-	X	X	X	-	-	X	-	-	X	T	0102-2802	26.38	-38.49
4100929	101720	AOML		651	-	-	X	X	X	-	-	X	-	-	-	L	0102-2802	39.75	-42.68
4100957	101718	AOML		668	-	-	X	X	X	-	-	X	-	-	-	L	0102-2802	34.04	-64.29
4100958	101700	AOML		665	-	-	X	X	X	-	-	X	-	-	-	L	0102-2802	36.96	-48.30
4100999	114623	AOML		585	-	-	X	X	X	-	-	X	-	-	-	L	0102-2802	31.65	-50.85
4400514	126483	AOML		663	-	-	X	X	X	-	-	X	-	-	-	L	0102-2802	41.30	-43.09
4400516	114599	AOML		551	-	-	X	X	X	-	-	X	-	-	-	L	0102-2802	34.57	-57.68
4400554	126479	AOML		669	-	-	X	X	X	-	-	X	-	-	-	L	0102-2802	40.35	-42.51
4400690	11248370	EC		672	-	-	X	X	X	-	-	S	-	-	-	O	0102-2802	50.92	-40.66
4700564	11095250	APL		672	-	-	X	X	-	-	-	-	-	-	-	O	0102-2802	64.42	-40.12
4800520	46517	PSC		670	-	X	X	X	-	-	-	-	-	-	-	L	0102-2802	75.84	-19.44

Abbreviations

WMO : WMO id.
 Argos : Argos id.
 Typ : Buoy type
 - first character : Manufacturer (C = ConMar , M = Metocean, P = Pacific Gyre
 T = Technocean, Y = Marlin-Yug...)
 - second character : Main type (F = FGGE, I = ICEB, S = SVP)
 - third character : Sub type (B = barometer buoy, W = Wind buoy,
 S = Salinity buoy)
 Ow : Buoy owner (country code or EU for EUCOS, E2 for HRSST-2 buoys, UP for upgraded
 buoys)
 Owner : Buoy owner for non EUCOS buoys
 Nobs : number of GTS reports received at Meteo-France
 Parameters (X = OK, S = stopped, - = not measured) :
 Wi : Wind
 AT : Air Temperature
 AP : Air Pressure
 dP : Air pressure tendency
 ST : Sea surface Temperature
 Wa : Wave period and height
 Ws : Wave spectra
 Dr : Drogue presence
 Sb : Subsurface temperature
 U : Relative humidity
 SS : Sea surface Salinity
 O : Origin of the reports (T = Argos Toulouse, L = Argos Largo, O = Other)
 Start_end : first and last dates of the month for which GTS data were received at Meteo-France
 Lat : Latitude of the latest position
 Lon : Longitude of the latest position
 Age : Age of the buoy (days)

 DepDate : Date of deployment
 DepLat : Latitude of deployment
 Dep Lon : Longitude of Deployment
 From : Harbour of departure

Definition : An operating drifting buoy is a buoy providing at least air pressure or wind
 (direction and velocity) data.

MOORED BUOYS

K-pattern moored buoys have suffered dramatically from storms this winter. Many buoys stopped operating or went adrift. With regards to "EUCOS" moored buoys, M6 came loose at the end of January and was recovered a few weeks later. It should be re-deployed in April.

Operating EGOS moored buoys (K-pattern)

WMO	Name	nobs	Wi	AT	AP	dP	ST	Wa	Ws	Dr	Sb	U	SS	O	Start_end	Lat	Lon
6100001	Cote d'Azur		-	-	-	-	-	-	-	-	-	-	-			43.40	7.80
6100002	Lion	668	X	X	X	X	X	X	X	-	-	X	-	T	0102-2802	42.10	4.70
6200001	Gascogne	672	X	X	X	X	X	X	X	-	-	X	-	O	0102-2802	45.30	-5.00
6200029	K1		-	-	-	-	-	-	-	-	-	-	-			48.70	-12.50
6200081	K2		-	-	-	-	-	-	-	-	-	-	-			51.00	-13.20
6200090	M1		-	-	-	-	-	-	-	-	-	-	-			53.10	-11.20
6200091	M2		-	-	-	-	-	-	-	-	-	-	-			53.50	-5.40
6200092	M3		-	-	-	-	-	-	-	-	-	-	-			51.20	-10.50
6200093	M4	671	X	X	X	-	X	X	-	-	-	-	-	O	0102-2802	54.70	-9.10
6200094	M5	672	X	X	X	-	X	-	-	-	-	-	-	O	0102-2802	51.70	-6.70
6200095	M6		-	-	-	-	-	-	-	-	-	-	-			53.10	-15.90

E-SURFMAR DB Monthly Report February 2014

6200105 K4	671	X	X	X	X	X	X	-	-	-	X	-	O	0102-2802	55.80	-11.40
6200108 K3	-	-	-	-	-	-	-	-	-	-	-	-	-	-	53.50	-19.50
6200163 Brittany	660	X	X	X	X	X	X	X	-	-	X	-	O	0102-2802	47.50	-8.40
6400045 K5	668	X	X	X	X	X	X	X	-	-	X	-	O	0102-2802	59.10	-11.70
6400046 K7	670	X	X	X	-	-	-	-	-	-	X	-	O	0102-2802	60.70	-5.20

Comments:

- EUCOS moored buoys are presented in bold characters.

----- Operating EGOS moored buoys (Spanish SeaWatch and WaveScan)

WMO	Name	nobs	Wi	AT	AP	dP	ST	Wa	Ws	Dr	Sb	U	SS	O	Start_end	Lat	Lon
1300130	Gran Canaria	650	X	X	X	-	X	X	X	-	-	-	X	O	0102-2802	28.18	-15.82
1300131	Tenerife Sur	669	X	X	X	-	-	X	X	-	-	-	-	O	0102-2802	28.00	-16.58
6100196	C. Begur	-	-	-	-	-	-	-	-	-	-	-	-	-	-	41.92	3.65
6100197	Mahon	672	X	X	X	-	-	X	X	-	-	-	-	O	0102-2802	39.72	4.42
6100198	C. de Gata	282	X	X	X	-	X	X	X	-	-	-	X	O	1702-2802	36.57	-2.33
6100280	Tarragona	366	X	X	X	-	X	X	X	-	-	-	X	O	1202-2802	40.77	1.47
6100281	Valencia	672	X	X	X	-	X	X	X	-	-	-	X	O	0102-2802	39.47	-0.27
6100417	C. de Palos	672	X	X	X	-	X	X	X	-	-	-	X	O	0102-2802	37.65	-0.32
6100430	Dragonera	-	-	-	-	-	-	-	-	-	-	-	-	-	-	39.56	2.11
6200024	Bilbao-Visc.	218	S	S	S	-	S	S	S	-	-	-	S	-	0102-1002	43.63	-3.03
6200025	C. de Penas	464	X	X	X	-	X	X	X	-	-	-	X	O	0102-2802	43.73	-6.17
6200082	E. de Bares	232	S	S	S	S	S	S	S	-	-	S	S	-	0102-2502	44.13	-7.69
6200083	Villano-Sis.	205	X	X	X	-	X	X	X	-	-	-	X	O	1902-2802	43.48	-9.22
6200084 C. Silleiro	672	X	X	X	-	X	X	X	X	-	-	-	X	O	0102-2802	42.12	-9.43
6200085	G. de Cadiz	278	S	S	S	-	S	S	S	-	-	-	S	-	0102-1202	36.48	-6.97
0	Santander	-	-	-	-	-	-	-	-	-	-	-	-	-	-	43.84	-3.77

Comments:

- The EUCOS buoy is presented in bold characters.

----- Operating ISPRA moored buoys (Italy)

WMO	Name	nobs	Wi	AT	AP	dP	ST	Wa	Ws	Dr	Sb	U	SS	O	Start_end	Lat	Lon
6100207		1292	-	-	X	-	X	X	-	-	-	-	-	O	0102-2802	37.44	15.15
6100208		479	-	-	X	-	X	X	-	-	-	-	-	O	0102-2802	37.52	12.53
6100209		-	-	-	-	-	-	-	-	-	-	-	-	-	-	38.26	13.33
6100210		1107	-	-	X	-	X	X	-	-	-	-	-	O	0402-2802	39.02	17.22
6100211		1317	-	-	X	-	X	X	-	-	-	-	-	O	0102-2802	39.45	15.92
6100212		-	-	-	-	-	-	-	-	-	-	-	-	-	-	40.62	9.89
6100213		231	-	-	X	-	X	X	-	-	-	-	-	O	0102-2802	40.55	8.11
6100214		1008	-	-	X	-	X	X	-	-	-	-	-	O	0502-2802	40.87	12.95
6100215		1317	-	-	-	-	X	X	-	-	-	-	-	O	0102-2802	40.98	17.38
6100216		140	-	-	X	-	X	X	-	-	-	-	-	O	2502-2802	42.24	11.55
6100218		609	-	-	X	-	X	X	-	-	-	-	-	O	0202-2802	43.83	13.72
6100219		1264	-	-	X	-	X	X	-	-	-	-	-	O	0102-2802	43.93	9.83
6100220		489	-	-	S	-	S	S	-	-	-	-	-	-	0102-2602	45.33	12.52
6100221		1318	-	-	X	-	X	X	-	-	-	-	-	O	0102-2802	39.12	9.40

----- Operating POSEIDON moored buoys (Greece)

WMO	Name	nobs	Wi	AT	AP	dP	ST	Wa	Ws	Dr	Sb	U	SS	O	Start_end	Lat	Lon
6101000		-	-	-	-	-	-	-	-	-	-	-	-	-	-	39.10	24.50
6101001		162	X	X	X	-	X	X	-	-	-	-	-	O	0102-2802	37.60	23.60
6101002		-	-	-	-	-	-	-	-	-	-	-	-	-	-	37.00	22.10
6101003		57	X	X	X	-	X	X	-	-	-	-	-	O	2102-2802	40.00	24.70
6101004		-	-	-	-	-	-	-	-	-	-	-	-	-	-	39.10	25.80
6101005		-	-	-	-	-	-	-	-	-	-	-	-	-	-	37.50	25.50
6101006		-	-	-	-	-	-	-	-	-	-	-	-	-	-	36.30	25.50
6101007		224	X	X	X	-	X	X	-	-	-	-	-	O	0102-2802	35.80	24.90
6101008		183	X	X	X	-	X	X	-	-	-	-	-	O	0102-2802	36.80	21.60
6101009		-	-	-	-	-	-	-	-	-	-	-	-	-	-	38.00	20.60

**E-SURFMAR DB Monthly Report
February 2014**

Other European moored buoys

WMO	Name	nobs	Wi	AT	AP	dP	ST	Wa	Ws	Dr	Sb	U	SS	O	Start_end	Lat	Lon
1200050	Cycofos	670	-	-	X	-	-	-	-	-	-	-	-	T	0102-2802	33.50	31.90
6100010	Italia-1	-	-	-	-	-	-	-	-	-	-	-	-	-	-	43.80	9.10
6200442	PAP	-	-	-	-	-	-	-	-	-	-	-	-	-	-	49.00	-16.40
6600021	Arkona Becken	666	X	X	-	-	X	-	-	-	-	-	-	O	0102-2802	54.90	13.90
6600022	Oder Bank	-	-	-	-	-	-	-	-	-	-	-	-	-	-	54.10	14.20
6600024	Darsser Schwelle	670	X	X	-	-	X	-	-	-	-	-	-	O	0102-2802	54.70	12.70

Offshore moored buoys in the western part of the EUCOS area

WMO	Name	nobs	Wi	AT	AP	dP	ST	Wa	Ws	Dr	Sb	U	SS	O	Start_end	Lat	Lon
1300308	East Atlantic	-	-	-	-	-	-	-	-	-	-	-	-	-	-	15.00	-38.00
4100026	-	427	-	X	-	-	S	-	-	-	-	X	-	L	0102-2802	11.49	-38.40
4100040	West Atlantic	667	X	X	X	X	X	X	-	-	-	X	-	O	0102-2802	14.50	-53.00
4100041	Mid. Atlantic	663	X	X	X	X	X	X	-	-	-	-	-	O	0102-2802	14.50	-46.00
4100043	Porto Rico	663	X	-	X	X	X	X	-	-	-	-	-	O	0102-2802	21.00	-65.00
4100044	-	665	X	X	X	X	X	X	-	-	-	-	-	O	0102-2802	21.70	-58.70
4100046	-	669	X	X	X	X	X	X	-	-	-	X	-	O	0102-2802	23.90	-70.90
4100047	-	-	-	-	-	-	-	-	-	-	-	-	-	-	-	27.50	-71.50
4100048	-	664	X	X	X	X	X	X	-	-	-	X	-	O	0102-2802	32.00	-69.60
4100049	-	665	X	X	X	X	X	X	-	-	-	-	-	O	0102-2802	27.50	-53.00
4100139	-	542	X	X	X	-	X	-	-	-	-	X	-	L	0102-2802	20.02	-37.86
4100300	Antilles	637	X	X	X	X	X	X	-	-	-	X	-	T	0102-2802	15.85	-57.47
4200059	Caraibes	672	X	X	X	X	X	X	-	-	-	-	-	O	0102-2802	15.00	-67.50
4400008	A Nantucket	-	-	-	-	-	-	-	-	-	-	-	-	-	-	40.50	-69.40
4400011	D Georges Bk	-	-	-	-	-	-	-	-	-	-	-	-	-	-	41.10	-66.60
4400018	SE Cape Cod	-	-	-	-	-	-	-	-	-	-	-	-	-	-	41.30	-69.30
4400024	NNE Channel	-	-	-	-	-	-	-	-	-	-	-	-	-	-	42.30	-65.90
4400137	E Scotia Sl.	660	X	X	X	X	X	X	-	-	-	-	-	O	0102-2802	42.30	-62.00
4400138	SW Gd Banks	-	-	-	-	-	-	-	-	-	-	-	-	-	-	44.30	-53.60
4400139	Beanquereau	624	X	X	X	X	X	X	-	-	-	-	-	O	0102-2802	44.30	-57.10
4400140	Tail of Bk	-	-	-	-	-	-	-	-	-	-	-	-	-	-	43.80	-51.70
4400141	Larentian F	669	X	X	X	X	X	X	-	-	-	-	-	O	0102-2802	43.00	-58.00
4400150	La Have Bk	655	X	-	X	X	X	X	-	-	-	-	-	O	0102-2802	42.50	-64.00

E-SURFMAR DB Monthly Report February 2014

Buoy-QC statistics from Meteo-France model outputs

Datend : Date of the last value received on GTS
Recvd : Total number of values received on GTS
GE : Number of Gross Errors (excluded from bias and sd computations)
bias : Mean differences between observation values and co-located model output values
Std : Standard deviation of differences

Air Pressure (hPa), drifting buoys, February 2014

Datend	WMO	Telcom	Recvd	GE	Bias	Std
20140228	2500618	60244420	672	0	0.0	0.4
20140228	2500619	60276270	672	0	-0.1	0.5
20140228	2500622	11540110	672	0	-0.0	0.7
20140228	2500624	60247420	672	0	0.0	0.5
20140228	2500648	60370080	672	0	0.0	0.4
20140228	2500650	60378060	672	0	0.0	0.5
20140228	2500652	60176700	672	0	0.2	0.5
20140228	2600556	11549080	672	0	-0.3	0.8
20140228	4100969	60213780	672	0	-0.7	1.1
20140228	4100970	60213790	634	0	0.2	0.6
20140228	4100971	60215900	580	0	-0.2	0.9
20140228	4100972	60217780	672	0	0.1	0.4
20140228	4400546	11160640	672	0	-0.0	0.9
20140228	4400551	11027150	672	0	-0.2	0.9
20140228	4400602	11468700	672	0	0.0	0.7
20140228	4400605	11473110	672	0	-0.1	1.2
20140228	4400607	11474110	672	0	-0.2	1.0
20140228	4400610	61517860	673	2	0.2	1.3
20140228	4400612	61511880	672	1	0.0	0.9
20140228	4400613	11475040	672	0	-0.3	0.9
20140228	4400621	61519840	443	18	0.0	1.0
20140228	4400624	11341110	668	0	-0.1	1.2
20140228	4400724	13300270	672	0	-0.4	0.8
20140219	4400725	11027170	446	28	0.5	1.7
20140228	4400740	11883820	672	0	-0.0	0.3
20140228	4400741	11688230	672	0	0.1	0.4
20140228	4400745	60899120	673	1	-0.0	1.0
20140228	4400747	61610060	602	1	-0.2	0.7
20140203	4400762	11244970	51	0	-0.1	0.6
20140228	4400763	11683410	260	0	-0.1	0.6
20140228	4400764	11688400	672	0	-0.2	0.8
20140228	4400765	11685410	672	1	0.1	1.3
20140228	4400767	11919510	672	0	0.0	0.3
20140228	4400770	11798230	610	0	0.2	1.2
20140228	4400771	60507000	672	0	-0.1	0.7
20140228	4400773	60211790	672	0	0.0	0.7
20140228	4400846	60441290	669	0	0.3	0.7
20140228	4400847	60442280	670	0	0.4	0.7
20140228	4400848	60448280	671	0	0.3	0.7
20140228	4400849	60640340	671	0	0.2	0.9
20140221	4400850	60648340	488	41	0.7	1.3
20140228	4400876	60648350	671	0	0.5	0.8
20140228	4400863	60211690	644	0	0.1	0.7
20140228	4400868	11794230	670	0	0.3	0.4
20140228	4400869	11026040	672	0	0.3	0.3
20140228	4400870	60210460	672	0	-0.1	0.7
20140228	4400874	60213460	672	0	0.1	1.0
20140228	4400875	11021610	672	0	0.6	0.3
20140228	4400876	60648350	671	0	0.5	0.8
20140228	4400877	60526170	584	0	-0.2	0.9
20140228	4400878	60528170	595	0	-0.1	1.1
20140228	4400879	60554620	562	4	-0.1	1.0
20140228	4400880	60556880	605	0	-0.0	0.9
20140228	6100690	11248990	661	0	0.1	0.5
20140228	6100691	11249940	662	0	0.1	0.6
20140228	6200507	11288550	669	0	0.5	0.9
20140228	6200508	10759040	666	0	0.7	0.8
20140228	6200512	11687230	672	0	0.0	0.4
20140228	6200514	60203700	672	0	-0.2	0.4
20140228	6200516	11475100	670	0	0.1	0.5
20140228	6200520	13611180	672	0	0.4	0.8
20140228	6200534	11683400	672	3	-0.1	1.2
20140228	6200553	11165650	672	0	0.1	0.7

E-SURFMAR DB Monthly Report February 2014

20140228	6200556	11021170	672	0	0.2	1.3
20140219	6200678	11029050	442	0	0.1	1.2
20140228	6200680	11166640	672	0	-0.3	0.6
20140228	6200681	11168640	672	0	-0.1	1.0
20140202	6200684	11882820	36	0	-0.1	0.2
20140228	6200686	11845450	672	0	-0.3	0.4
20140228	6200687	11349100	672	0	0.1	0.4
20140228	6200695	60408990	672	0	-0.0	0.8
20140228	6200713	11246980	664	0	0.1	0.4
20140228	6200714	11240980	662	0	0.1	0.4
20140206	6300552	11548400	124	2	-1.4	3.7
20140206	6300635	11477140	129	1	0.3	0.6
20140228	6300639	11471050	255	6	1.1	2.7
20140228	6300640	60172710	672	0	0.8	0.7
20140228	6300642	11548080	672	20	0.1	0.6
20140228	6400516	11473100	672	0	-0.2	0.3
20140228	6400518	11472110	672	0	-0.0	0.7
20140228	6400519	11547420	672	0	-0.7	0.4
20140228	6400520	11479040	672	0	-0.2	0.4
20140228	6400521	11470030	666	22	0.0	0.8
20140228	6400525	60175710	672	0	-0.2	0.5
20140228	6400526	60175700	672	0	-0.2	0.4
20140207	6400606	11478100	145	0	-0.2	0.4
20140228	6400607	11479100	672	0	0.1	0.3
20140228	6400611	11548420	672	0	-0.2	0.7
20140228	6400613	60174710	672	0	-0.2	0.5
20140228	6400614	60178700	672	0	0.0	0.5
20140228	6400615	60173700	672	0	0.2	0.5
20140228	6400616	60178710	672	0	0.3	0.5
20140228	6400620	11756730	672	0	0.1	0.7
20140228	6400621	60170720	672	0	-0.1	0.5
20140228	6400622	60172810	672	0	-0.1	0.4
20140228	6400623	11470040	672	0	-0.1	0.5
20140226	6400662	11475110	612	0	-0.2	0.4
20140228	6400663	60175810	672	0	0.4	0.5
20140228	6400664	60176710	672	0	-0.0	0.6
20140228	6400665	60171710	672	0	-0.1	0.4
20140228	6400666	60179710	672	0	-0.0	0.5
20140228	6400667	61615060	532	1	-0.4	0.6
20140228	6400668	60177860	672	0	-0.0	0.5
20140228	6400669	60177710	672	0	-0.2	0.5
20140228	6400670	61513850	441	1	0.1	0.5
20140228	6400691	61514870	443	1	0.2	0.6
20140228	6400692	60172720	82	0	0.2	0.3
20140228	6500592	11164650	672	1	0.1	1.0

Air Pressure (hPa), moored buoys, February 2014

Datend	WMO	Telcom	Recvd	GE	Bias	Std
20140228	1200050		670	0	0.0	0.5
20140228	1300130		650	0	0.9	0.7
20140228	1300131		669	0	0.4	0.8
20140228	6100002		666	0	0.4	0.7
20140228	6100197		672	0	0.8	0.7
20140228	6100198		282	0	0.3	0.8
20140228	6100207		1292	0	0.6	0.7
20140228	6100208		479	0	-0.9	0.5
20140228	6100210		1107	0	0.8	0.6
20140228	6100211		1317	0	0.4	0.5
20140228	6100213		231	0	0.6	0.7
20140228	6100214		1008	0	-0.1	0.6
20140228	6100216		140	0	0.3	0.4
20140228	6100218		609	2	0.5	0.6
20140228	6100219		1264	0	-0.6	0.6
20140226	6100220		489	1	-0.5	0.6
20140228	6100221		1318	0	-0.5	0.7
20140228	6100280		366	0	0.4	0.7
20140228	6100281		672	0	0.1	0.9
20140228	6100417		672	0	0.3	0.7
20140228	6101001		162	0	0.6	0.7
20140228	6101003		57	0	0.6	1.3
20140228	6101007		224	0	0.1	0.7
20140228	6101008		183	0	0.1	0.8
20140228	6200001		672	0	0.1	0.8
20140210	6200024		218	13	0.6	1.6

E-SURFMAR DB Monthly Report February 2014

20140228	6200025	464	0	0.5	1.0
20140225	6200082	224	0	-0.0	1.2
20140228	6200083	205	0	-0.9	2.3
20140228	6200084	672	0	0.2	0.9
20140212	6200085	278	0	2.4	2.6
20140228	6200093	671	0	0.5	1.1
20140228	6200094	672	2	-0.3	1.2
20140228	6200105	671	0	-0.2	0.9
20140228	6200163	660	0	-0.0	1.0
20140228	6400045	668	1	-0.2	0.8
20140228	6400046	669	0	-0.2	1.0

Air Temperature (C), moored buoys, February 2014

Datend	WMO	Telcom	Recvd	GE	Bias	Std
20140228	1300130		650	0	0.1	0.6
20140228	1300131		668	0	0.8	0.6
20140228	6100002		665	0	-0.1	0.5
20140228	6100197		670	0	0.5	0.6
20140228	6100198		282	0	-0.1	0.5
20140228	6100280		366	0	0.5	0.6
20140228	6100281		672	0	0.1	0.6
20140228	6100417		672	0	0.1	0.5
20140228	6101001		162	0	0.1	0.6
20140228	6101003		57	2	9.5	2.3
20140228	6101007		224	0	-0.4	0.6
20140228	6101008		183	0	-0.2	1.0
20140228	6200001		672	0	-0.7	0.7
20140210	6200024		218	0	0.2	0.9
20140228	6200025		461	0	-0.5	1.1
20140225	6200082		225	0	-0.8	0.9
20140228	6200083		205	0	-0.4	0.6
20140228	6200084		672	0	-0.1	0.7
20140212	6200085		267	3	1.2	1.8
20140228	6200093		671	0	-0.4	0.7
20140228	6200094		672	0	0.6	0.6
20140228	6200105		671	0	-0.6	0.7
20140228	6200163		659	0	-1.9	0.8
20140228	6400045		668	0	-0.4	0.6
20140228	6400046		670	0	-0.2	0.5
20140228	6600021		665	0	0.6	0.4
20140228	6600024		670	0	0.8	0.7

Wind direction (deg.), moored buoys, February 2014

Datend	WMO	Telcom	Recvd	GE	Bias	Std
20140228	1300130		647	18	17	17
20140228	1300131		665	65	3	30
20140228	6100002		652	0	-7	19
20140228	6100197		669	12	-14	25
20140228	6100198		274	28	-6	35
20140228	6100280		363	14	-9	29
20140228	6100281		668	20	-11	27
20140228	6100417		669	21	-9	21
20140228	6101001		161	15	6	33
20140228	6101003		57	11	93	39
20140228	6101007		224	22	-19	34
20140228	6101008		183	7	5	33
20140228	6200001		672	9	-1	17
20140210	6200024		218	6	-19	27
20140228	6200025		463	11	-5	24
20140225	6200082		225	2	5	16
20140228	6200083		205	14	5	25
20140228	6200084		672	7	8	18
20140212	6200085		278	0	-3	17
20140228	6200093		670	6	7	17
20140228	6200094		672	0	2	13
20140228	6200105		671	2	0	18
20140228	6200163		658	5	-5	16
20140228	6400045		667	3	2	17
20140228	6400046		668	2	4	15
20140228	6600021		664	6	-3	11
20140228	6600024		669	7	-6	12

E-SURFMAR DB Monthly Report February 2014

Wind speed rate, moored buoys, February 2014

Datend	WMO	Telcom	Recvd	GE	Rate	Err
20140228	1300130		647	0	1.0	2.2
20140228	1300131		665	7	1.2	2.9
20140228	6100002		652	0	1.1	1.8
20140228	6100197		669	0	1.1	2.0
20140228	6100198		274	0	0.9	2.0
20140228	6100280		363	0	1.1	1.8
20140228	6100281		668	0	1.2	2.0
20140228	6100417		669	0	0.9	2.0
20140228	6101001		161	0	1.2	2.2
20140228	6101003		57	0	0.7	2.1
20140228	6101007		224	0	0.4	6.5
20140228	6101008		183	0	1.0	2.9
20140228	6200001		672	4	1.0	2.0
20140210	6200024		218	1	1.0	2.3
20140228	6200025		463	1	0.8	2.7
20140225	6200082		225	3	0.9	2.0
20140228	6200083		205	13	0.9	1.4
20140228	6200084		672	1	1.0	2.2
20140212	6200085		278	0	0.9	1.4
20140228	6200093		670	2	1.0	2.2
20140228	6200094		672	0	0.9	1.8
20140228	6200105		671	1	1.1	1.9
20140228	6200163		658	3	1.0	1.8
20140228	6400045		667	1	1.0	1.7
20140228	6400046		668	0	1.0	1.7
20140228	6600021		664	1	1.1	1.1
20140228	6600024		669	0	1.1	1.3

Comments on QC statistics :

Air pressure

1. During the month, the GTS data transmission for air pressure was stopped for Metocean buoys WMO **4400725** and **6300639** after the measurements were found unreliable. They have been rehabilitated on the 5th and 6th of March, respectively. This is also the case for DBI buoy WMO **4400850** rehabilitated on the 5th of March.
2. Three Metocean buoys temporarily reported wrong pressure data onto the GTS in February but not enough for having the transmission stopped for this parameter: WMO **4400621**, **6300521** and **6300642**. The problem with buoy WMO 4400621 was a non-synchronous change of dataformat inside the buoy and at the data processing, indeed.
3. Metocean buoy WMO **6500552** reported a few wrong pressure data before it stopped transmitting for an unknown reason on the 6th of March.
4. The GTS transmission of air pressure for Spanish moored buoy WMO **6200024** and **6200085** was also stopped because judged unreliable.

Air temperature

5. Greek Poseidon moored buoy WMO **6101003** reports too high air temperature values: up to 15 °C more than co-located model outputs.
6. Air temperature values reported by Brittany moored buoy (WMO 6200163) appear more and more biased (about -2°C by the end of February).

Wind

7. Greek Poseidon moored buoy WMO **6101007** reports abnormal calm winds.

E-SURFMAR DB Monthly Report February 2014

Monthly QC statistics and other data quality control tools are available on line at :
<http://www.meteo.shom.fr/qctools/>

The working area of the E-SURFMAR website is open at <http://esurfmar.meteo.fr/wikisurf-wa/> . Ask the E-SURFMAR Programme Manager Pierre.Blouch@meteo.fr for the password in case you forgot it. Graphs of system performances may be displayed/downloaded at http://esurfmar.meteo.fr/doc/r/surfmar/others/e-surfmar_monitoring.pdf.