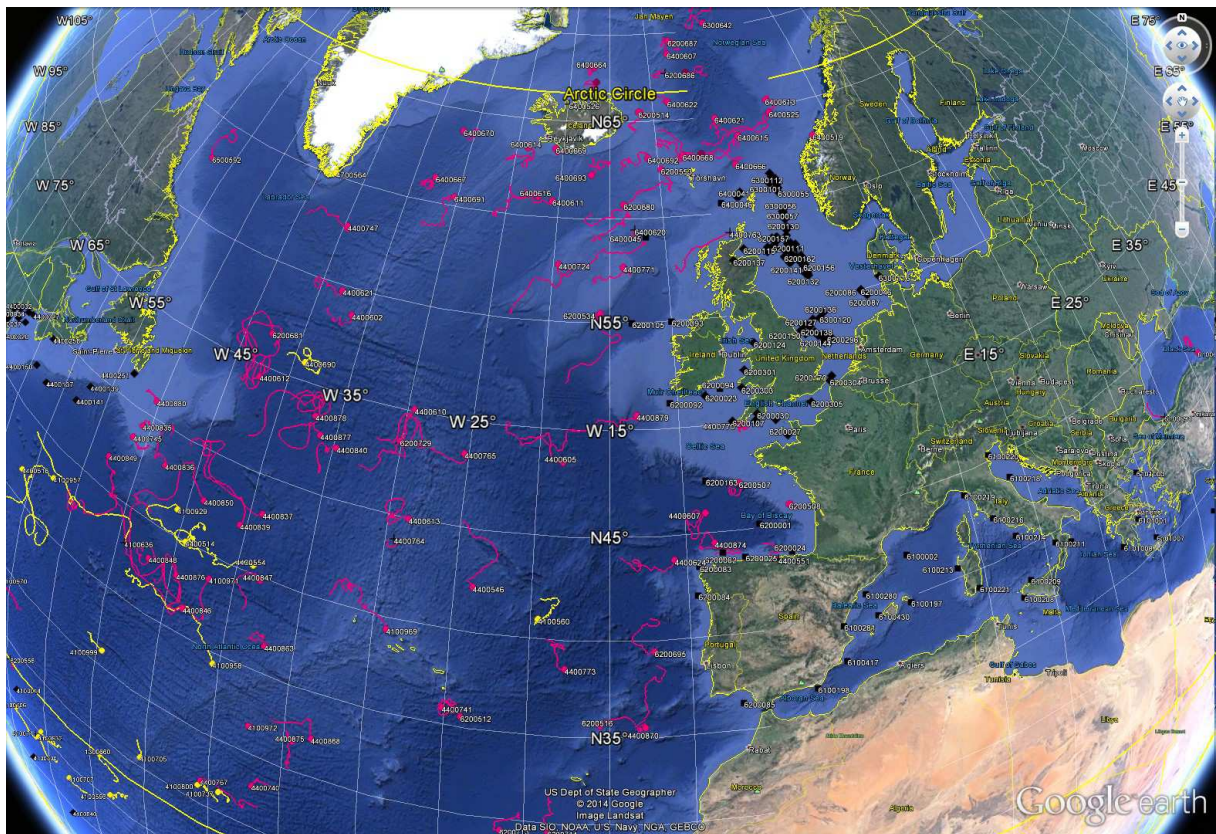


DATA BUOY MONTHLY REPORT

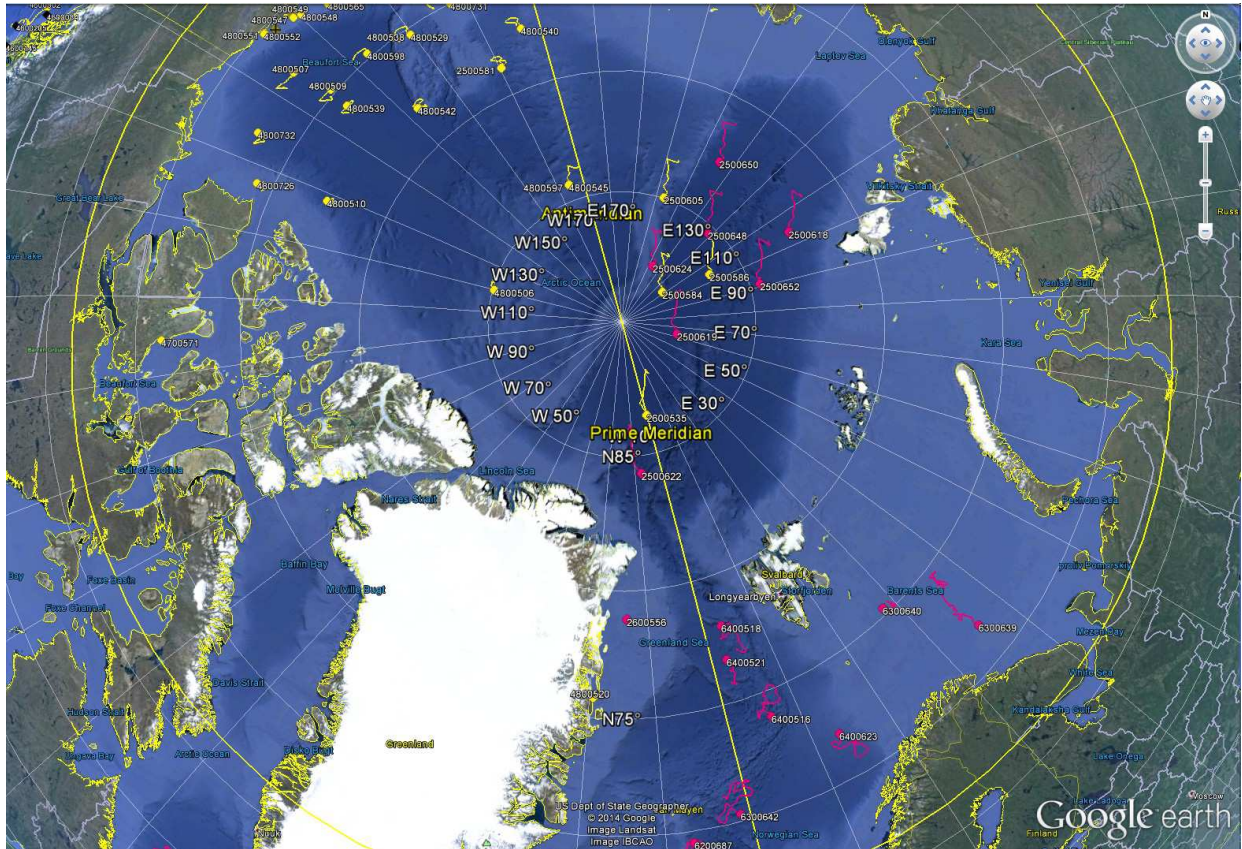
March 2014



*March 2014 : Operating data buoys in the North Atlantic
Drifting buoy trajectories : E-SURFMAR (red), others (yellow)
Moored buoy positions (black)*

*Most recent trajectories may be seen at:
http://www.meteo.shom.fr/cartographie/data/kml/MeteoFrance_buoys_map_15.kmz*

E-SURFMAR DB Monthly Report
March 2014



March 2014
Drifting buoy trajectories in Arctic Ocean and adjacent seas : E-SURFMAR (red), others (yellow)

DRIFTING BUOYS

Network status

By the end of March, **98 Drifting buoys**, reporting air pressure onto the GTS, were in operation in the frame of E-SURFMAR. Out of these, 67 were E-SURFMAR funded Iridium SVP-Bs, including 8 in the Arctic and 5 HRSST-2 buoys. The remaining buoys were: 30 Iridium drifters owned by NOAA and upgraded with barometers by E-SURFMAR and one Iridium buoy owned by an external partner, Marlin Yug, in the Black Sea. E-SURFMAR is funding the communication for this latter : another opportunity to evaluate the products of this manufacturer and to have buoys in operation in the Black Sea.

These buoys included one, gently ashore, which reports reliable pressure onto the GTS from the Norwegian coast: WMO 6400519.

Information about the availability of buoys for future deployments may be get from the E-SURFMAR wikisite (working area) at: http://esurfmar.meteo.fr/wikisurf-wa/index.php/Availability_of_drifting_buoys

Besides E-SURFMAR buoys, 30 drifting buoys were reporting at least air pressure observations from the EUMETNET area of interest. Out of these, 5 were reporting Sea Surface Salinity, some in the frame of Spurs/Strasse campaign (validation of SMOS and Aquarius remote SSS measurements).

Drifting buoys - New deployments

WMO	Telcom	Typ	Ow	Dep_Date	DepLat	DepLon	From	Comment
4400835	60218770	PSB	UP	20140304	44.6	-50.0	Norfolk	Atlantic Compass
4400836	60218680	PSB	UP	20140304	44.7	-48.0	Norfolk	Atlantic Compass
4400837	60209490	PSB	UP	20140304	44.8	-46.0	Norfolk	Atlantic Compass
4400839	60205090	PSB	UP	20140304	45.0	-44.0	Norfolk	Atlantic Compass
4400840	60208710	PSB	UP	20140305	46.5	-35.8	Norfolk	Atlantic Compass
6200729	60207600	PSB	UP	20140306	47.0	-33.0	Norfolk	Atlantic Compass

Operating drifting buoys in North Atlantic by the end of the month

WMO	Telcom	Typ	Ow	nobs	Wi	AT	AP	dP	ST	Wa	Ws	Dr	Sb	U	SS	O	Start_end	Lat	Lon	Age
2500618	60244420	MSB	EU	743	-	-	X	X	X	-	-	X	-	-	-	T	0103-3103	82.78	104.12	217
2500619	60276270	MSB	EU	743	-	-	X	X	X	-	-	X	-	-	-	T	0103-3103	87.91	62.73	215
2500622	11540110	MSB	EU	743	-	-	X	X	-	-	-	X	-	-	-	T	0103-3103	84.35	-7.58	574
2500624	60247420	MSB	EU	743	-	-	X	X	-	-	-	X	-	-	-	T	0103-3103	87.59	136.47	213
2500648	60370080	MSB	EU	743	-	-	X	X	X	-	-	X	-	-	-	T	0103-3103	85.32	121.50	204
2500650	60375030	MSB	EU	744	-	-	X	X	-	-	-	X	-	-	-	T	0103-3103	82.75	134.21	207
2500652	60176700	MSB	EU	743	-	-	X	X	X	-	-	X	-	-	-	T	0103-3103	84.62	91.01	201
2600556	11549080	MSB	EU	743	-	-	X	X	-	-	-	X	-	-	-	T	0103-3103	78.93	-14.04	555
4100969	60213780	PSB	UP	743	-	-	X	X	X	-	-	X	-	-	-	T	0103-3103	39.40	-29.05	236
4100970	60213790	PSB	UP	713	-	-	X	X	X	-	-	X	-	-	-	T	0103-3103	29.01	-60.97	235
4100971	60215900	PSB	UP	696	-	-	X	X	X	-	-	X	-	-	-	T	0103-3103	38.82	-41.81	235
4100972	60217780	PSB	UP	736	-	-	X	X	X	-	-	X	-	-	-	T	0103-3103	31.77	-37.38	235
4400546	11160640	MSB	EU	743	-	-	X	X	X	-	-	X	-	-	-	T	0103-3103	42.24	-23.75	377
4400602	11468700	MSB	UP	743	-	-	X	X	X	-	-	X	-	-	-	T	0103-3103	53.74	-36.34	375
4400605	11473110	MSB	EU	743	-	-	X	X	X	-	-	X	-	-	-	T	0103-3103	48.48	-18.29	325
4400607	11474110	MSB	EU	743	-	-	X	X	X	-	-	X	-	-	-	T	0103-3103	45.99	-8.62	326
4400610	61517860	MSB	EU	743	-	-	X	X	X	-	-	X	-	-	-	T	0103-3103	50.10	-29.44	112
4400612	61511880	MSB	EU	725	-	-	X	X	X	-	-	X	-	-	-	T	0103-3103	49.47	-42.34	100
4400613	11475040	MSB	EU	705	-	-	X	X	X	-	-	X	-	-	-	T	0103-3103	44.97	-28.55	391
4400621	61519840	MSB	EU	743	-	-	X	X	X	-	-	X	-	-	-	T	0103-3103	54.74	-37.84	51
4400624	11341110	YSB	EU	734	-	-	X	X	X	-	-	X	-	-	-	T	0103-3103	43.87	-10.82	476
4400724	13300270	MSB	EU	743	-	-	X	X	X	-	-	X	-	-	-	T	0103-3103	57.73	-19.52	646
4400725	11027170	MSB	EU	743	-	-	X	X	X	-	-	X	-	-	-	T	0103-3103	22.94	-33.53	647
4400740	11883820	PSB	UP	718	-	-	X	X	X	-	-	X	-	-	-	T	0103-3103	28.08	-36.84	632
4400741	11688230	MSB	EU	743	-	-	X	X	X	-	-	X	-	-	-	T	0103-3103	35.95	-25.10	556
4400745	60899120	MSB	EU	743	-	-	X	X	X	-	-	X	-	-	-	T	0103-3103	43.52	-51.23	111
4400747	61610060	MSB	EU	651	-	-	X	X	X	-	-	X	-	-	-	T	0103-3103	57.81	-39.58	97
4400765	11685410	MSB	EU	743	-	-	X	X	X	-	-	X	-	-	-	T	0103-3103	48.46	-25.29	368

E-SURFMAR DB Monthly Report March 2014

4400767	11919510	MSB	EU	743	-	-	X	X	X	-	-	X	-	-	-	T	0103-3103	26.78	-40.49	795
4400770	11798230	MSB	E2	743	-	-	X	X	X	-	-	X	-	-	-	T	0103-3103	49.94	-5.59	403
4400771	60507000	MSB	E2	743	-	-	X	X	X	-	-	X	-	-	-	T	0103-3103	57.64	-13.86	403
4400773	60211790	PSB	UP	670	-	-	X	X	X	-	-	X	-	-	-	T	0103-3103	38.58	-17.76	261
4400835	60218770	PSB	UP	659	-	-	X	X	X	-	-	X	-	-	-	T	0403-3103	44.33	-50.74	28
4400836	60218680	PSB	UP	657	-	-	X	X	X	-	-	X	-	-	-	T	0403-3103	43.18	-47.64	28
4400837	60209490	PSB	UP	634	-	-	X	X	X	-	-	X	-	-	-	T	0503-3103	43.15	-38.94	28
4400839	60205090	PSB	UP	634	-	-	X	X	X	-	-	X	-	-	-	T	0503-3103	42.18	-40.42	28
4400840	60208710	PSB	UP	610	-	-	X	X	X	-	-	X	-	-	-	T	0603-3103	47.43	-34.66	27
4400846	60441290	DSB	UP	742	-	-	X	X	X	-	-	X	-	-	-	T	0103-3103	36.56	-43.34	65
4400847	60442280	DSB	UP	741	-	-	X	X	X	-	-	X	-	-	-	T	0103-3103	39.88	-38.07	65
4400848	60448280	DSB	UP	742	-	-	X	X	X	-	-	X	-	-	-	T	0103-3103	38.14	-46.89	64
4400849	60640340	DSB	UP	720	-	-	X	X	S	-	-	X	-	-	-	T	0103-3103	41.76	-52.82	66
4400850	60648340	DSB	UP	742	-	-	X	X	X	-	-	X	-	-	-	T	0103-3103	42.52	-43.66	65
4400863	60211690	PSB	UP	730	-	-	X	X	X	-	-	X	-	-	-	T	0103-3103	36.59	-36.98	259
4400868	11794230	MSB	E2	732	-	-	X	X	X	-	-	X	-	-	-	T	0103-3103	32.40	-33.11	328
4400869	11026040	MSB	EU	743	-	-	X	X	X	-	-	X	-	-	-	T	0103-3103	27.03	-28.27	761
4400870	60210460	PSB	UP	743	-	-	X	X	X	-	-	X	-	-	-	T	0103-3103	35.58	-12.91	259
4400874	60213460	PSB	UP	743	-	-	X	X	X	-	-	X	-	-	-	T	0103-3103	44.53	-8.14	259
4400875	11021610	MSB	EU	743	-	-	X	X	X	-	-	X	-	-	-	T	0103-3103	31.86	-34.33	745
4400876	60648350	DSB	UP	742	-	-	X	X	X	-	-	X	-	-	-	T	0103-3103	38.11	-44.37	65
4400877	60526170	PSB	UP	743	-	-	X	X	X	-	-	X	-	-	-	T	0103-3103	47.80	-36.13	56
4400878	60528170	PSB	UP	743	-	-	X	X	X	-	-	X	-	-	-	T	0103-3103	48.62	-36.87	56
4400879	60554620	PSB	UP	743	-	-	X	X	X	-	-	X	-	-	-	T	0103-3103	50.69	-13.06	55
4400880	60656880	PSB	UP	743	-	-	X	X	X	-	-	X	-	-	-	T	0103-3103	45.86	-50.28	57
6100690	11248990	YST	UA	731	-	-	X	X	X	-	-	X	-	-	-	T	0103-3103	42.12	36.47	132
6200507	11288550	DSB	UP	741	-	-	X	X	X	-	-	X	-	-	-	T	0103-3103	47.22	-6.13	337
6200508	10759040	DSB	UP	742	-	-	X	X	X	-	-	X	-	-	-	T	0103-3103	45.87	-2.84	335
6200512	11687230	MSB	EU	744	-	-	X	X	X	-	-	X	-	-	-	T	0103-3103	35.61	-23.93	328
6200514	60203700	MSB	E2	743	-	-	X	X	X	-	-	X	-	-	-	T	0103-3103	65.52	-11.70	403
6200516	11475100	MSB	EU	743	-	-	X	X	X	-	-	X	-	-	-	T	0103-3103	35.69	-15.61	329
6200520	13611180	MSB	EU	743	-	-	X	X	X	-	-	X	-	-	-	T	0103-3103	25.00	-72.72	783
6200534	11683400	MSB	EU	743	-	-	X	X	X	-	-	X	-	-	-	T	0103-3103	55.43	-15.83	188
6200553	11165650	MSB	EU	743	-	-	X	X	X	-	-	X	-	-	-	T	0103-3103	62.44	-9.76	373
6200680	11166640	MSB	EU	743	-	-	X	X	X	-	-	X	-	-	-	T	0103-3103	60.71	-13.69	500
6200681	11168640	MSB	EU	743	-	-	X	X	X	-	-	X	-	-	-	T	0103-3103	51.65	-42.55	501
6200687	11349100	YSB	EU	743	-	-	X	X	X	-	-	X	-	-	-	T	0103-3103	69.48	-6.86	480
6200695	60408990	MSB	E2	677	-	-	X	X	X	-	-	X	-	-	-	T	0103-3103	39.47	-12.27	329
6200713	11246980	YSB	EU	731	-	-	X	X	X	-	-	X	-	-	-	T	0103-3103	29.40	-21.36	475
6200714	11240980	YSB	EU	731	-	-	X	X	X	-	-	X	-	-	-	T	0103-3103	29.53	-18.58	472
6200729	60207600	PSB	UP	610	-	-	X	X	X	-	-	X	-	-	-	T	0603-3103	48.52	-30.08	26
6300639	11471050	MSB	EU	743	-	-	X	X	X	-	-	X	-	-	-	T	0103-3103	71.72	35.66	508
6300640	60172710	MSB	EU	743	-	-	X	X	X	-	-	X	-	-	-	T	0103-3103	75.27	27.99	230
6300642	11548080	MSB	EU	743	-	-	X	X	X	-	-	X	-	-	-	T	0103-3103	70.36	-1.12	652
6400516	11473100	MSB	EU	743	-	-	X	X	X	-	-	X	-	-	-	T	0103-3103	73.96	6.13	538
6400518	11472110	MSB	EU	743	-	-	X	X	X	-	-	X	-	-	-	T	0103-3103	78.06	3.29	538
6400519	11547420	MSB	UP	743	-	-	X	X	X	-	-	X	-	-	-	T	0103-3103	63.05	7.40	332
6400520	11479040	MSB	EU	743	-	-	X	X	X	-	-	X	-	-	-	T	0103-3103	67.58	-5.28	325
6400521	11470030	MSB	EU	743	-	-	X	X	X	-	-	X	-	-	-	T	0103-3103	76.73	2.45	323
6400525	60175710	MSB	EU	743	-	-	X	X	X	-	-	X	-	-	-	T	0103-3103	64.72	3.47	227
6400607	11479100	MSB	EU	743	-	-	X	X	X	-	-	X	-	-	-	T	0103-3103	68.73	-7.30	509
6400611	11548420	MSB	UP	743	-	-	X	X	X	-	-	X	-	-	-	T	0103-3103	60.84	-20.60	270
6400613	60174710	MSB	EU	743	-	-	X	X	X	-	-	X	-	-	-	T	0103-3103	65.43	3.58	212
6400614	60178700	MSB	EU	743	-	-	X	X	X	-	-	X	-	-	-	T	0103-3103	63.46	-23.81	208
6400615	60173700	MSB	EU	743	-	-	X	X	X	-	-	X	-	-	-	T	0103-3103	63.78	-0.91	143
6400616	60178710	MSB	EU	743	-	-	X	X	X	-	-	X	-	-	-	T	0103-3103	61.01	-22.08	142
6400621	60170720	MSB	EU	743	-	-	X	X	X	-	-	X	-	-	-	T	0103-3103	64.88	-3.01	226
6400622	60172810	MSB	EU	743	-	-	X	X	X	-	-	X	-	-	-	T	0103-3103	66.01	-8.17	228
6400623	11470040	MSB	EU	743	-	-	X	X	X	-	-	X	-	-	-	T	0103-3103	72.06	13.40	324
6400663	60175810	MSB	EU	743	-	-	X	X	X	-	-	X	-	-	-	T	0103-3103	67.21	-16.73	126
6400664	60176710	MSB	EU	744	-	-	X	X	X	-	-	X	-	-	-	T	0103-3103	68.04	-17.13	126
6400666	60179710	MSB	EU	743	-	-	X	X	X	-	-	X	-	-	-	T	0103-3103	62.33	-1.95	124
6400667	61615060	MSB	EU	584	-	-	X	X	X	-	-	X	-	-	-	T	0103-3103	61.24	-32.70	96
6400668	60177860	MSB	EU	743	-	-	X	X	X	-	-	X	-	-	-	T	0103-3103	63.09	-7.32	100
6400669	60177710	MSB	EU	743	-	-	X	X	X	-	-	X	-	-	-	T	0103-3103	63.51	-20.82	96
6400670	61513850	MSB	EU	712	-	-	X	X	X	-	-	X	-	-	-	T	0103-3103	63.87	-31.32	53
6400691	61514870	MSB	EU	743	-	-	X	X	X	-	-	X	-	-	-	T	0103-3103	60.44	-30.25	52
6400692	60172720	MSB	EU	743	-	-	X	X	X	-	-	X	-	-	-	T	0103-3103	63.05	-11.04	39
6400693	60173720	MSB	EU	743	-	-	X	X	X	-	-	X	-	-	-	T	0103-3103	62.22	-16.91	33
6500592	11164650	MSB	EU	743	-	-	X	X	X	-	-	X	-	-	-	T	0103-3103	57.98	-57.58	501

E-SURFMAR DB Monthly Report March 2014

Drifting buoys which ceased to be operational

WMO	Telcom	Typ	Ow	End_Date	Lat	Lon	Age	Cause
4400551	11027150	MSB	EU	20140318	43.5	-4.0	772	Picked up near Santander
4400763	11683410	MSB	EU	20140321	59.0	-4.0	381	Unknown
4400764	11688400	MSB	EU	20140307	43.9	-29.3	344	Unknown
6200556	11021170	MSB	EU	20140304	23.8	-59.2	728	Faded (empty batteries)
6200686	11845450	MSB	E2	20140315	67.6	-7.9	610	Faded (empty batteries)
6400526	60175700	MSB	EU	20140301	65.9	-19.9	197	Ashore in the north of Iceland
6400620	11756730	MSB	UP	20140327	59.4	-12.7	665	Faded (empty batteries)
6400665	60171710	MSB	EU	20140326	63.1	-5.3	124	AP removed by mistake? Rehabil. on 08/04

Non-operating drifting buoys reporting GTS data

WMO	Telcom	Typ	Ow	nobs	Wi	AT	AP	dP	ST	Wa	Ws	Dr	Sb	U	SS	O	Start_end	Lat	Lon	Age
6400665	60171710	MSB	EU	743	-	-	S	S	X	-	-	X	-	-	-	T	0103-3103	63.09	-5.35	124

Other operating drifting buoys into the EUCOS area of interest by the end of the month

WMO	Telcom	Typ	Ow	nobs	Wi	AT	AP	dP	ST	Wa	Ws	Dr	Sb	U	SS	O	Start_end	Lat	Lon
1300600	43869	AOML		743	-	-	X	X	-	-	-	X	-	-	-	L	0103-3103	26.48	-65.97
1300659	11910180	UKMO		743	-	-	X	X	X	-	-	X	-	-	-	T	0103-3103	25.22	-34.83
1300660	11022040	UKMO		743	-	-	X	X	X	-	-	X	-	-	-	T	0103-3103	23.68	-48.94
1300662	11098800	UKMO		743	-	-	X	X	X	-	-	X	-	-	-	T	0103-3103	24.54	-26.51
1300664	11090810	UKMO		738	-	-	X	X	X	-	-	X	-	-	-	T	0103-3103	25.12	-28.64
1300972	13808440	LODYC		1238	-	-	S	S	X	-	-	X	-	-	X	T	0503-3103	15.25	-17.75
2600535	971540	PSC		744	-	X	X	X	-	-	-	-	-	-	-	O	0103-3103	86.42	-0.16
4100560	114550	AOML		741	-	-	X	-	-	-	-	X	-	-	-	L	0103-3103	41.01	-19.50
4100596	11473050	EUME		739	-	-	X	X	X	-	-	X	-	-	-	T	0103-3103	20.80	-48.11
4100632	11474050	EUME		743	-	-	X	X	X	-	-	X	-	-	-	T	0103-3103	19.54	-55.95
4100705	11596570	AOML		743	-	-	X	X	X	-	-	X	-	-	-	T	0103-3103	25.82	-45.33
4100706	11595580	AOML		743	-	-	X	X	X	-	-	X	-	-	-	T	0103-3103	19.55	-58.97
4100707	11590580	AOML		743	-	-	X	X	X	-	-	X	-	-	-	T	0103-3103	18.70	-52.48
4100708	11585510	AOML		743	-	-	X	X	X	-	-	X	-	-	-	T	0103-3103	19.51	-64.77
4100709	11598570	AOML		743	-	-	X	X	X	-	-	X	-	-	-	T	0103-3103	19.89	-63.20
4100711	11477030	EUME		743	-	-	X	X	X	-	-	X	-	-	-	T	0103-3103	20.44	-55.49
4100734				1307	-	-	X	X	X	-	-	X	-	-	X	T	0103-2803	11.21	-45.74
4100736				1487	-	-	X	X	X	-	-	X	-	-	X	T	0103-3103	14.55	-44.59
4100737	60342390	CMM		651	-	-	X	X	X	-	-	X	-	-	X	T	0103-3103	26.61	-39.16
4100800	60547830	CMM		705	-	-	X	X	X	-	-	X	-	-	X	T	0103-3103	26.37	-40.69
4100929	101720	AOML		729	-	-	X	X	X	-	-	X	-	-	-	L	0103-3103	41.43	-45.55
4100957	101718	AOML		744	-	-	X	X	X	-	-	X	-	-	-	L	0103-3103	38.27	-57.51
4100958	101700	AOML		742	-	-	X	X	X	-	-	X	-	-	-	L	0103-3103	34.41	-40.43
4100999	114623	AOML		609	-	-	X	X	X	-	-	X	-	-	-	L	0103-3103	31.17	-49.33
4400514	126483	AOML		743	-	-	X	X	X	-	-	X	-	-	-	L	0103-3103	40.06	-44.27
4400516	114599	AOML		603	-	-	X	X	X	-	-	X	-	-	-	L	0103-3103	36.90	-61.26
4400554	126479	AOML		741	-	-	X	X	X	-	-	X	-	-	-	L	0103-3103	40.49	-38.80
4400690	11248370	EC		742	-	-	X	X	X	-	-	X	-	-	-	O	0103-3103	50.90	-38.98
4700564	11095250	EC/M		733	-	-	X	X	-	-	-	-	-	-	-	O	0103-3103	60.13	-43.15
4800520	46517	PSC		743	-	X	X	X	-	-	-	-	-	-	-	L	0103-3103	75.84	-19.44

Abbreviations

WMO : WMO id.
 Argos : Argos id.
 Typ : Buoy type
 - first character : Manufacturer (C = ConMar , M = Metocean, P = Pacific Gyre
 T = Technocean, Y = Marlin-Yug...)
 - second character : Main type (F = FGGE, I = ICEB, S = SVP)
 - third character : Sub type (B = barometer buoy, W = Wind buoy,
 S = Salinity buoy)
 Ow : Buoy owner (country code or EU for EUCOS, E2 for HRSST-2 buoys, UP for upgraded
 buoys)
 Owner : Buoy owner for non EUCOS buoys
 Nobs : number of GTS reports received at Meteo-France
 Parameters (X = OK, S = stopped, - = not measured) :
 Wi : Wind
 AT : Air Temperature
 AP : Air Pressure
 dP : Air pressure tendency
 ST : Sea surface Temperature
 Wa : Wave period and height
 Ws : Wave spectra
 Dr : Drogue presence
 Sb : Subsurface temperature
 U : Relative humidity
 SS : Sea surface Salinity
 O : Origin of the reports (T = Argos Toulouse, L = Argos Largo, O = Other)
 Start_end : first and last dates of the month for which GTS data were received at Meteo-France
 Lat : Latitude of the latest position
 Lon : Longitude of the latest position
 Age : Age of the buoy (days)

 DepDate : Date of deployment
 DepLat : Latitude of deployment
 Dep Lon : Longitude of Deployment
 From : Harbour of departure

Definition : An operating drifting buoy is a buoy providing at least air pressure or wind
 (direction and velocity) data.

MOORED BUOYS

K-pattern moored buoys have suffered dramatically from storms this winter. Many buoys stopped operating or went adrift. With regards to "EUCOS" moored buoys, M6 came loose at the end of January and was recovered a few weeks later. It should be re-deployed in April.

Operating EGOS moored buoys (K-pattern)

WMO	Name	nobs	Wi	AT	AP	dP	ST	Wa	Ws	Dr	Sb	U	SS	O	Start_end	Lat	Lon	
6100001	Cote d'Azur	-	-	-	-	-	-	-	-	-	-	-	-	-		43.40	7.80	
6100002	Lion	740	X	X	X	X	X	X	-	-	-	X	-	T	0103-3103	42.10	4.70	
6200001	Gascogne	744	X	X	X	X	X	X	-	-	-	X	-	O	0103-3103	45.30	-5.00	
6200029	K1	-	-	-	-	-	-	-	-	-	-	-	-	-		48.70	-12.50	
6200081	K2	-	-	-	-	-	-	-	-	-	-	-	-	-		51.00	-13.20	
6200090	M1	-	-	-	-	-	-	-	-	-	-	-	-	-		53.10	-11.20	
6200091	M2	-	-	-	-	-	-	-	-	-	-	-	-	-		53.50	-5.40	
6200092	M3	467	X	X	X	-	X	X	-	-	-	X	X	O	1203-3103	51.20	-10.50	
6200093	M4	743	X	X	X	-	X	X	-	-	-	-	-	-		0103-3103	54.70	-9.10
6200094	M5	743	X	X	X	-	X	-	-	-	-	-	-	O	0103-3103	51.70	-6.70	
6200095	M6	-	-	-	-	-	-	-	-	-	-	-	-	-		53.10	-15.90	

E-SURFMAR DB Monthly Report March 2014

6200105 K4	742	X	X	X	X	X	X	-	-	-	X	-	O	0103-3103	55.80	-11.40
6200108 K3		-	-	-	-	-	-	-	-	-	-	-	-		53.50	-19.50
6200163 Brittany	733	X	X	X	X	X	X	-	-	-	X	-	O	0103-3103	47.50	-8.40
6400045 K5	741	X	X	X	X	X	X	-	-	-	X	-	O	0103-3103	59.10	-11.70
6400046 K7	739	X	X	X	-	-	-	-	-	-	X	-	O	0103-3103	60.70	-5.20

Comments:

- EUCOS moored buoys are presented in bold characters.

Operating EGOS moored buoys (Spanish SeaWatch and WaveScan)

WMO	Name	nobs	Wi	AT	AP	dP	ST	Wa	Ws	Dr	Sb	U	SS	O	Start_end	Lat	Lon
1300130	Gran Canaria	641	X	X	X	-	X	X	-	-	-	-	X	O	0103-3103	28.18	-15.82
1300131	Tenerife Sur	279	S	S	S	-	-	S	-	-	-	-	-		0103-1403	28.00	-16.58
6100196	C. Begur		-	-	-	-	-	-	-	-	-	-	-			41.92	3.65
6100197	Mahon	744	X	X	X	-	X	X	-	-	-	-	O	0103-3103	39.72	4.42	
6100198	C. de Gata	744	X	X	X	-	X	X	-	-	-	-	X	O	0103-3103	36.57	-2.33
6100280	Tarragona	718	X	X	X	-	X	X	-	-	-	-	X	O	0103-3103	40.77	1.47
6100281	Valencia	744	X	X	X	-	X	X	-	-	-	-	X	O	0103-3103	39.47	-0.27
6100417	C. de Palos	744	X	X	X	-	X	X	-	-	-	-	X	O	0103-3103	37.65	-0.32
6100430	Dragonera	345	X	X	X	-	X	X	-	-	-	-	O	1703-3103	39.56	2.11	
6200024	Bilbao-Visc.	522	X	X	X	-	X	X	-	-	-	-	X	O	1003-3103	43.63	-3.03
6200025	C. de Penas	485	S	S	S	-	S	S	-	-	-	-	S		0103-2503	43.73	-6.17
6200082	E. de Bares	440	S	S	S	-	S	S	-	-	-	-	S		0703-2503	44.13	-7.69
6200083	Villano-Sis.	744	X	X	X	-	X	X	-	-	-	-	X	O	0103-3103	43.48	-9.22
6200084	C. Silleiro	744	X	X	X	-	X	X	-	-	-	-	X	O	0103-3103	42.12	-9.43
6200085	G. de Cadiz	441	X	X	X	-	X	X	-	-	-	-	X	O	1303-3103	36.48	-6.97
0	Santander		-	-	-	-	-	-	-	-	-	-	-			43.84	-3.77

Comments:

- The EUCOS buoy is presented in bold characters.

Operating ISPRA moored buoys (Italy)

WMO	Name	nobs	Wi	AT	AP	dP	ST	Wa	Ws	Dr	Sb	U	SS	O	Start_end	Lat	Lon
6100207		363	-	-	S	-	S	S	-	-	-	-	-		0103-0803	37.44	15.15
6100208		1049	-	-	X	-	X	X	-	-	-	-	-	O	0103-3103	37.52	12.53
6100209		551	-	-	X	-	X	X	-	-	-	-	-	O	2003-3103	38.26	13.33
6100210		1439	-	-	X	-	X	X	-	-	-	-	-	O	0103-3103	39.02	17.22
6100211		1199	-	-	X	-	X	X	-	-	-	-	-	O	0103-3103	39.45	15.92
6100212			-	-	-	-	-	-	-	-	-	-	-			40.62	9.89
6100213		1439	-	-	X	-	X	X	-	-	-	-	-	O	0103-3103	40.55	8.11
6100214		1242	-	-	X	-	X	X	-	-	-	-	-	O	0103-3103	40.87	12.95
6100215		1437	-	-	-	-	X	X	-	-	-	-	-	O	0103-3103	40.98	17.38
6100216		1324	-	-	X	-	X	X	-	-	-	-	-	O	0103-3103	42.24	11.55
6100218		229	-	-	X	-	X	X	-	-	-	-	-	O	0103-2803	43.83	13.72
6100219		1432	-	-	X	-	X	X	-	-	-	-	-	O	0103-3103	43.93	9.83
6100220		866	-	-	X	-	X	X	-	-	-	-	-	O	0303-3103	45.33	12.52
6100221		1357	-	-	X	-	X	X	-	-	-	-	-	O	0103-3103	39.12	9.40

Operating POSEIDON moored buoys (Greece)

WMO	Name	nobs	Wi	AT	AP	dP	ST	Wa	Ws	Dr	Sb	U	SS	O	Start_end	Lat	Lon
6101000			-	-	-	-	-	-	-	-	-	-	-			39.10	24.50
6101001		203	X	X	X	-	X	X	-	-	-	-	-	O	0103-3103	37.60	23.60
6101002			-	-	-	-	-	-	-	-	-	-	-			37.00	22.10
6101003		228	X	X	X	-	X	X	-	-	-	-	-	O	0103-3103	40.00	24.70
6101004			-	-	-	-	-	-	-	-	-	-	-			39.10	25.80
6101005			-	-	-	-	-	-	-	-	-	-	-			37.50	25.50
6101006			-	-	-	-	-	-	-	-	-	-	-			36.30	25.50
6101007		233	X	X	X	-	X	X	-	-	-	-	-	O	0103-3103	35.80	24.90
6101008		187	X	X	X	-	X	X	-	-	-	-	-	O	0103-3103	36.80	21.60
6101009			-	-	-	-	-	-	-	-	-	-	-			38.00	20.60

**E-SURFMAR DB Monthly Report
March 2014**

Other European moored buoys

WMO	Name	nobs	Wi	AT	AP	dP	ST	Wa	Ws	Dr	Sb	U	SS	O	Start_end	Lat	Lon
1200050	Cycofos	744	-	-	X	-	-	-	-	-	-	-	-	T	0103-3103	33.50	31.90
6100010	Italia-1		-	-	-	-	-	-	-	-	-	-	-			43.80	9.10
6200442	PAP		-	-	-	-	-	-	-	-	-	-	-			49.00	-16.40
6600021	Arkona Becken	741	X	X	-	-	X	-	-	-	-	-	-	O	0103-3103	54.90	13.90
6600022	Oder Bank		-	-	-	-	-	-	-	-	-	-	-			54.10	14.20
6600024	Darsser Schwelle	731	X	X	-	-	X	X	-	-	-	-	-	O	0103-3103	54.70	12.70

Offshore moored buoys in the western part of the EUCOS area

WMO	Name	nobs	Wi	AT	AP	dP	ST	Wa	Ws	Dr	Sb	U	SS	O	Start_end	Lat	Lon
1300308	East Atlantic		-	-	-	-	-	-	-	-	-	-	-			15.00	-38.00
4100026		482	-	X	-	-	X	-	-	-	-	X	-	L	0103-3103	11.49	-38.40
4100040	West Atlantic	735	X	X	X	X	X	X	-	-	-	X	-	O	0103-3103	14.50	-53.00
4100041	Mid. Atlantic	727	X	X	X	X	X	X	-	-	-	-	-	O	0103-3103	14.50	-46.00
4100043	Porto Rico	729	X	-	S	S	S	X	-	-	-	-	-	O	0103-3103	21.00	-65.00
4100044		733	X	X	X	X	X	X	-	-	-	-	-	O	0103-3103	21.70	-58.70
4100046		742	X	X	X	X	X	X	-	-	-	X	-	O	0103-3103	23.90	-70.90
4100047			-	-	-	-	-	-	-	-	-	-	-			27.50	-71.50
4100048		733	X	X	X	X	X	X	-	-	-	X	-	O	0103-3103	32.00	-69.60
4100049		735	X	X	X	X	X	X	-	-	-	-	-	O	0103-3103	27.50	-53.00
4100139		577	X	X	X	-	X	-	-	-	-	X	-	L	0103-3103	20.02	-37.86
4100300	Antilles	694	X	X	X	X	X	X	-	-	-	X	-	T	0103-3103	15.85	-57.47
4200059	Caraibes	739	X	X	X	X	X	X	-	-	-	-	-	O	0103-3103	15.00	-67.50
4400008	A Nantucket		-	-	-	-	-	-	-	-	-	-	-			40.50	-69.40
4400011	D Georges Bk		-	-	-	-	-	-	-	-	-	-	-			41.10	-66.60
4400018	SE Cape Cod		-	-	-	-	-	-	-	-	-	-	-			41.30	-69.30
4400024	NNE Channel		-	-	-	-	-	-	-	-	-	-	-			42.30	-65.90
4400137	E Scotia Sl.	727	S	X	X	X	X	X	-	-	-	-	-	O	0103-3103	42.30	-62.00
4400138	SW Gd Banks		-	-	-	-	-	-	-	-	-	-	-			44.30	-53.60
4400139	Beanquereau	737	S	X	X	X	X	X	-	-	-	-	-	O	0103-3103	44.30	-57.10
4400140	Tail of Bk		-	-	-	-	-	-	-	-	-	-	-			43.80	-51.70
4400141	Larentian F	739	X	X	X	X	X	X	-	-	-	-	-	O	0103-3103	43.00	-58.00
4400150	La Have Bk	731	X	-	X	X	X	X	-	-	-	-	-	O	0103-3103	42.50	-64.00

E-SURFMAR DB Monthly Report March 2014

Buoy-QC statistics from Meteo-France model outputs

Datend : Date of the last value received on GTS
Recvd : Total number of values received on GTS
GE : Number of Gross Errors (excluded from bias and sd computations)
bias : Mean differences between observation values and co-located model output values
Std : Standard deviation of differences

Air Pressure (hPa), drifting buoys, March 2014

Datend	WMO	Telcom	Recvd	GE	Bias	Std
20140331	2500618	60244420	743	0	-0.1	0.6
20140331	2500619	60276270	743	0	-0.0	0.7
20140331	2500622	11540110	743	0	0.1	0.5
20140331	2500624	60247420	743	0	0.0	0.6
20140331	2500648	60370080	743	0	-0.1	0.4
20140331	2500650	60378060	744	0	0.0	0.4
20140331	2500652	60176700	743	0	-0.0	0.6
20140331	2600556	11549080	743	0	-0.1	0.9
20140331	4100969	60213780	743	0	-0.6	0.5
20140331	4100970	60213790	713	0	0.2	0.7
20140331	4100971	60215900	696	0	-0.2	0.6
20140331	4100972	60217780	736	0	0.1	0.3
20140331	4400546	11160640	743	0	-0.1	0.5
20140318	4400551	11027150	410	20	-0.3	0.7
20140331	4400602	11468700	743	0	-0.1	0.8
20140331	4400605	11473110	743	0	-0.1	0.8
20140331	4400607	11474110	743	0	-0.2	0.6
20140331	4400610	61517860	743	3	0.4	0.9
20140331	4400612	61511880	725	0	-0.1	1.0
20140331	4400613	11475040	705	0	-0.4	0.5
20140331	4400621	61519840	743	0	0.2	0.9
20140331	4400624	11341110	734	0	-0.0	0.5
20140331	4400724	13300270	743	0	-0.5	0.8
20140331	4400725	11027170	634	0	0.0	0.3
20140331	4400740	11883820	718	0	-0.1	0.3
20140331	4400741	11688230	743	0	0.1	0.3
20140331	4400745	60899120	743	0	-0.0	0.9
20140331	4400747	61610060	651	0	-0.2	0.9
20140321	4400763	11683410	217	0	0.0	0.6
20140307	4400764	11688400	158	0	-0.5	0.6
20140331	4400765	11685410	743	0	0.2	0.9
20140331	4400767	11919510	743	0	-0.0	0.4
20140331	4400770	11798230	743	0	0.3	0.5
20140331	4400771	60507000	743	0	-0.1	0.7
20140331	4400773	60211790	670	0	0.1	0.5
20140331	4400835	60218770	659	0	-0.3	0.8
20140331	4400836	60218680	657	0	0.0	0.8
20140331	4400837	60209590	634	0	-0.2	0.9
20140331	4400839	60205090	634	0	-0.3	0.8
20140331	4400840	60208710	610	0	-0.1	0.8
20140331	4400846	60441290	742	0	0.1	0.5
20140331	4400847	60442280	741	0	0.2	0.5
20140331	4400848	60448280	742	0	0.2	0.6
20140331	4400849	60640340	719	0	0.2	0.8
20140331	4400850	60648340	633	0	0.4	0.7
20140331	4400876	60648350	742	0	0.4	0.7
20140331	4400863	60211690	730	0	-0.0	0.4
20140331	4400868	11794230	732	0	0.2	0.3
20140331	4400869	11026040	743	0	0.3	0.3
20140331	4400870	60210460	743	0	-0.0	0.5
20140331	4400874	60213460	743	0	0.2	0.6
20140331	4400875	11021610	743	0	0.5	0.6
20140331	4400876	60648350	742	0	0.4	0.7
20140331	4400877	60526170	743	0	-0.2	0.8
20140331	4400878	60528170	743	0	-0.2	0.8
20140331	4400879	60554620	743	0	-0.0	0.7
20140331	4400880	60556880	743	0	-0.0	0.8
20140331	6100690	11248990	731	0	0.1	0.7
20140311	6100691	11249940	219	0	0.9	1.9
20140331	6200507	11288550	741	0	0.3	0.7
20140331	6200508	10759040	742	0	0.4	0.6
20140331	6200512	11687230	744	0	0.1	0.8
20140331	6200514	60203700	743	0	-0.2	0.8

E-SURFMAR DB Monthly Report March 2014

20140331	6200516	11475100	743	0	0.1	0.5
20140331	6200520	13611180	743	0	0.3	0.8
20140331	6200534	11683400	743	0	-0.1	0.6
20140331	6200553	11165650	743	0	0.0	0.7
20140303	6200556	11021170	61	0	-3.0	1.8
20140331	6200680	11166640	743	0	-0.2	0.7
20140331	6200681	11168640	743	0	-0.3	0.8
20140315	6200686	11845450	334	0	-0.5	0.9
20140331	6200687	11349100	743	0	0.1	0.9
20140331	6200695	60408990	677	0	-0.0	0.5
20140331	6200713	11246980	731	0	-0.1	0.4
20140331	6200714	11240980	731	0	-0.1	0.4
20140331	6200729	60207600	610	0	0.3	0.7
20140331	6300639	11471050	671	26	-0.6	1.3
20140331	6300640	60172710	743	0	0.6	0.8
20140331	6300642	11548080	743	3	0.1	1.1
20140331	6400516	11473100	743	10	-0.5	1.4
20140331	6400518	11472110	743	0	-0.1	0.8
20140331	6400519	11547420	743	0	-0.9	0.6
20140331	6400520	11479040	743	0	-0.2	0.7
20140331	6400521	11470030	743	17	-0.3	1.3
20140331	6400525	60175710	743	0	-0.2	0.7
20140301	6400526	60175700	11	0	-0.2	0.8
20140331	6400607	11479100	743	0	-0.1	0.6
20140331	6400611	11548420	743	0	-0.2	0.9
20140331	6400613	60174710	743	0	-0.2	0.7
20140331	6400614	60178700	743	39	-0.0	0.7
20140331	6400615	60173700	743	0	0.4	0.7
20140331	6400616	60178710	743	0	0.3	0.8
20140327	6400620	11756730	645	0	-0.0	0.8
20140331	6400621	60170720	743	0	0.0	0.7
20140331	6400622	60172810	743	0	-0.1	0.7
20140331	6400623	11470040	743	0	0.1	0.9
20140331	6400663	60175810	743	0	0.3	0.7
20140331	6400664	60176710	744	0	-0.1	0.7
20140326	6400665	60171710	613	0	0.9	1.5
20140331	6400666	60179710	743	0	0.1	0.7
20140331	6400667	61615060	584	0	-0.2	1.0
20140331	6400668	60177860	743	0	0.0	0.8
20140331	6400669	60177710	743	0	0.1	0.7
20140331	6400670	61513850	712	0	0.1	1.1
20140331	6400691	61514870	743	0	0.3	0.9
20140331	6400692	60172720	743	0	0.2	0.7
20140331	6400693	60173720	743	0	0.2	0.9
20140331	6500592	11164650	743	0	-0.0	1.2

Air Pressure (hPa), moored buoys, March 2014

Datend	WMO	Telcom	Recvd	GE	Bias	Std
20140331	1200050		744	0	-0.0	0.6
20140331	1300130		641	25	0.9	0.7
20140314	1300131		279	9	0.2	0.8
20140331	6100002		736	0	0.4	0.6
20140331	6100197		744	0	0.8	0.7
20140331	6100198		744	0	0.0	0.8
20140308	6100207		363	0	0.4	0.6
20140331	6100208		1049	0	-1.0	0.6
20140331	6100209		551	0	-0.6	0.8
20140331	6100210		1439	0	0.8	0.7
20140331	6100211		1199	0	0.3	0.7
20140331	6100213		1439	0	0.6	0.6
20140331	6100214		1242	0	-0.1	0.5
20140331	6100216		1324	0	0.3	0.5
20140328	6100218		229	0	0.5	0.5
20140331	6100219		1432	0	-0.6	0.5
20140331	6100220		866	0	-0.3	0.6
20140331	6100221		1357	0	-0.6	0.7
20140331	6100280		718	0	0.2	0.7
20140331	6100281		744	0	0.2	0.8
20140331	6100417		744	0	0.2	0.7
20140331	6100430		345	0	-0.1	0.7
20140331	6101001		203	0	0.5	0.7
20140331	6101003		228	0	0.7	0.6
20140331	6101007		233	0	-0.1	0.7
20140331	6101008		187	0	0.1	0.8

E-SURFMAR DB Monthly Report March 2014

20140331	6200001	744	0	0.1	0.6
20140331	6200024	522	0	0.4	0.7
20140325	6200025	485	1	0.4	0.7
20140325	6200082	439	0	0.3	0.7
20140331	6200083	744	0	0.3	0.8
20140331	6200084	744	0	0.6	0.7
20140331	6200085	441	0	0.4	0.6
20140331	6200092	467	1	-0.1	0.6
20140331	6200093	743	2	0.0	0.8
20140331	6200094	743	0	0.0	0.6
20140331	6200105	742	0	0.0	0.6
20140331	6200163	733	0	0.2	0.5
20140331	6400045	741	0	0.1	0.7
20140331	6400046	739	0	-0.2	0.8

Air Temperature (C), moored buoys, March 2014

Datend	WMO	Telcom	Recvd	GE	Bias	Std
20140331	1300130		640	0	0.2	0.5
20140314	1300131		279	0	0.9	0.4
20140331	6100002		738	0	-0.2	0.5
20140331	6100197		737	0	0.3	0.7
20140331	6100198		739	0	0.1	1.0
20140331	6100280		715	0	0.4	0.6
20140331	6100281		739	0	0.0	0.7
20140331	6100417		742	0	0.1	0.7
20140331	6100430		341	0	-0.1	0.5
20140331	6101001		203	0	0.1	0.6
20140331	6101003		228	16	10.2	2.6
20140331	6101007		233	0	-0.5	0.5
20140331	6101008		187	0	-0.3	0.8
20140331	6200001		744	0	-0.3	0.7
20140331	6200024		522	0	0.4	0.9
20140325	6200025		485	0	0.2	1.1
20140325	6200082		436	0	0.2	0.9
20140331	6200083		744	0	-0.2	0.7
20140331	6200084		740	0	0.1	0.6
20140331	6200085		441	0	-0.2	0.6
20140331	6200092		467	0	-0.3	0.6
20140331	6200093		743	0	-0.2	0.5
20140331	6200094		743	0	0.9	0.6
20140331	6200105		742	0	-0.3	0.6
20140331	6200163		717	0	-0.5	1.0
20140331	6400045		741	0	-0.3	0.7
20140331	6400046		739	0	-0.1	0.6
20140331	6600021		740	0	0.5	0.7
20140331	6600024		730	0	0.6	0.8

Wind direction (deg.), moored buoys, March 2014

Datend	WMO	Telcom	Recvd	GE	Bias	Std
20140331	1300130		639	11	14	18
20140312	1300131		270	12	3	24
20140331	6100002		713	2	-9	20
20140331	6100197		731	12	-15	20
20140331	6100198		706	33	7	26
20140331	6100280		703	32	-6	28
20140331	6100281		731	58	3	33
20140331	6100417		732	20	-8	20
20140331	6100430		341	8	-13	28
20140331	6101001		201	17	1	36
20140331	6101003		227	32	-2	42
20140331	6101007		231	24	-14	32
20140331	6101008		187	18	3	39
20140331	6200001		744	7	-3	24
20140331	6200024		519	13	-5	27
20140325	6200025		448	15	0	24
20140325	6200082		439	2	-1	19
20140331	6200083		741	15	-2	19
20140331	6200084		574	97	2	30
20140331	6200085		436	27	-4	30
20140331	6200092		466	0	6	17
20140331	6200093		742	5	5	16

E-SURFMAR DB Monthly Report March 2014

20140331	6200094	743	7	0	16
20140331	6200105	741	40	-6	27
20140331	6200163	731	3	-4	16
20140331	6400045	739	5	2	14
20140331	6400046	739	0	5	14
20140331	6600021	736	5	-3	16
20140331	6600024	730	6	-4	19

Wind speed rate, moored buoys, March 2014

Datend	WMO	Telcom	Recvd	GE	Rate	Err
20140331	1300130		639	0	0.9	2.3
20140312	1300131		270	0	1.1	2.8
20140331	6100002		713	0	1.1	1.5
20140331	6100197		731	0	1.0	1.9
20140331	6100198		706	1	0.9	2.1
20140331	6100280		703	0	1.2	2.1
20140331	6100281		731	0	1.4	2.5
20140331	6100417		732	0	0.9	1.5
20140331	6100430		341	0	0.9	1.6
20140331	6101001		201	0	1.0	2.1
20140331	6101003		227	1	1.0	2.2
20140331	6101007		231	1	0.0	0.0
20140331	6101008		187	0	1.0	1.8
20140331	6200001		744	0	1.0	1.6
20140331	6200024		519	0	1.0	1.6
20140325	6200025		448	0	0.6	2.6
20140325	6200082		439	0	0.8	1.3
20140331	6200083		741	4	0.8	1.4
20140331	6200084		574	4	1.0	3.3
20140331	6200085		436	2	1.0	1.7
20140331	6200092		466	0	0.9	1.7
20140331	6200093		742	1	1.0	1.8
20140331	6200094		743	0	1.0	1.5
20140331	6200105		741	0	0.9	2.8
20140331	6200163		731	1	1.1	1.5
20140331	6400045		739	0	1.1	2.3
20140331	6400046		739	0	1.0	1.7
20140331	6600021		736	1	1.1	1.4
20140331	6600024		730	0	1.1	1.4

Comments on QC statistics :

Air pressure

1. Metocean buoy WMO **4400551** reported a few wrong pressure values after being picked up off Santander and brought ashore.
2. Metocean buoy WMO **6200556** reported a few wrong pressure values at the end of its life (low battery voltage).
3. Four Metocean buoys temporarily reported wrong pressure data onto the GTS in March but not enough for having the transmission stopped for this parameter: WMO **6300639**, **6400516**, **6400521** and **6400614**.
4. Spanish moored buoy WMO **1300130** reported a few wrong data after the 26th of March, before the transmission was sopped at the end of ihe month.

Air temperature

5. Greek Poseidon moored buoy WMO **6101003** continued to report too high air temperature values: up to 15 °C more than co-located model outputs.

E-SURFMAR DB Monthly Report March 2014

Wind

6. Greek Poseidon moored buoy WMO **6101007** continued to report abnormal calm winds.

Monthly QC statistics and other data quality control tools are available on line at :

<http://www.meteo.shom.fr/qctools/>

The working area of the E-SURFMAR website is open at <http://esurfmar.meteo.fr/wikisurf-wa/> . Ask the E-SURFMAR Programme Manager Pierre.Blouch@meteo.fr for the password in case you forgot it. Graphs of system performances may be displayed/downloaded at http://esurfmar.meteo.fr/doc/r/surfmar/others/e-surfmar_monitoring.pdf.