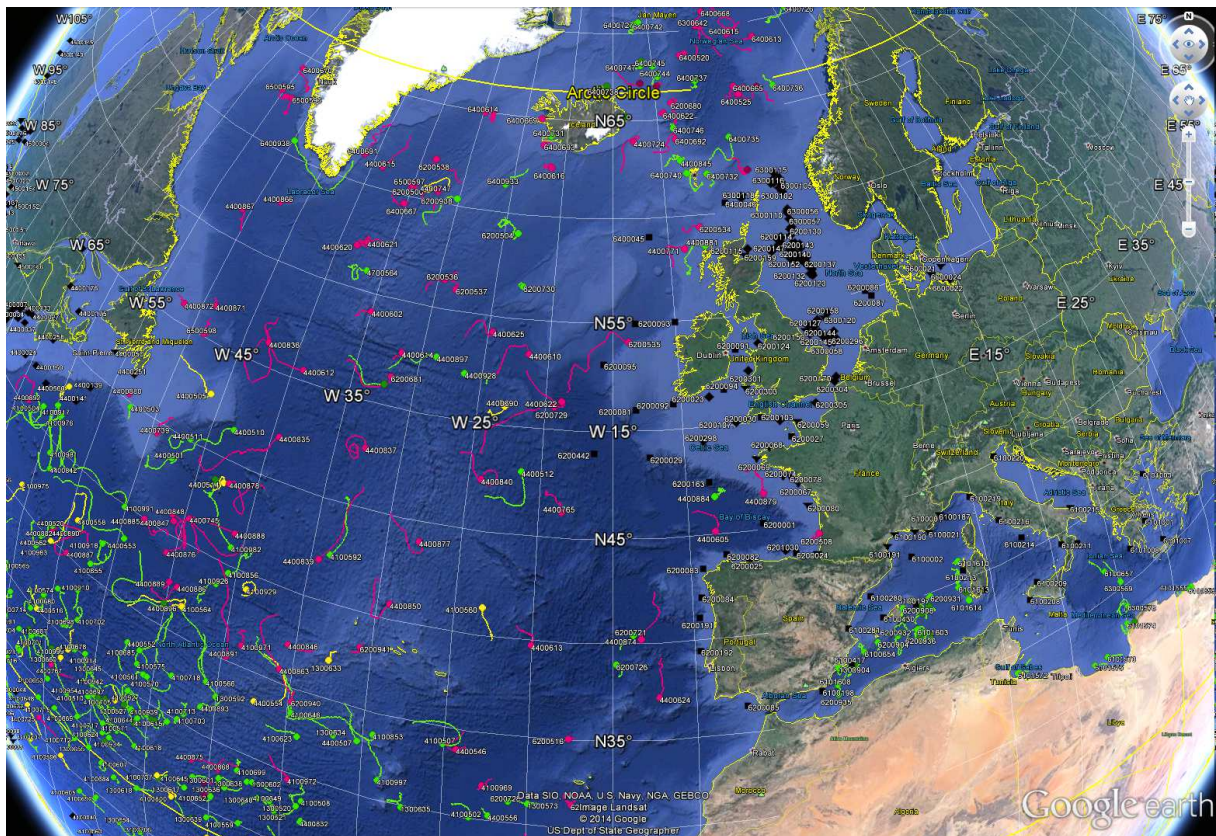


## DATA BUOY MONTHLY REPORT

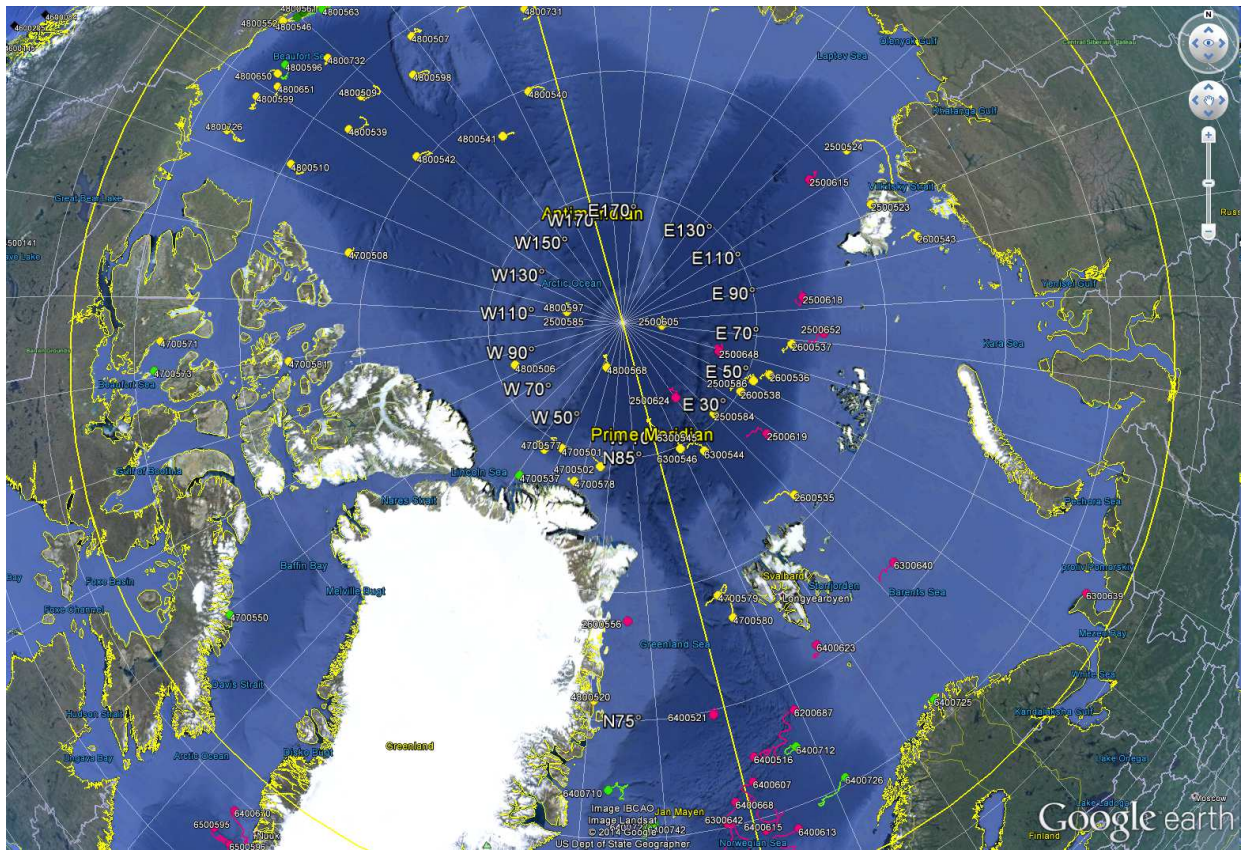
July 2014



*July 2014 : Operating data buoys in the North Atlantic  
Drifting buoy trajectories : E-SURFMAR (red), others (yellow)  
Moored buoy positions (black)*

*Most recent trajectories may be seen at:  
[http://www.meteo.shom.fr/cartographie/data/kml/MeteoFrance\\_buoys\\_map\\_15.kmz](http://www.meteo.shom.fr/cartographie/data/kml/MeteoFrance_buoys_map_15.kmz)*

**E-SURFMAR DB Monthly Report  
July 2014**



July 2014  
Drifting buoy trajectories in Arctic Ocean and adjacent seas : E-SURFMAR (red), others (yellow)



-----  
**DRIFTING BUOYS**  
-----

**Network status**

By the end of July, **107 Drifting buoys**, reporting air pressure onto the GTS, were in operation in the frame of E-SURFMAR. Out of these, 73 were E-SURFMAR funded Iridium SVP-Bs, including 7 in the Arctic and 8 HRSST-2 buoys. The remaining buoys were: 34 Iridium drifters owned by NOAA and upgraded with barometers by E-SURFMAR.

Information about the availability of buoys for future deployments may be get from the E-SURFMAR wikisite (working area) at: [http://esurfmar.meteo.fr/wikisurf-wa/index.php/Availability\\_of\\_drifting\\_buoys](http://esurfmar.meteo.fr/wikisurf-wa/index.php/Availability_of_drifting_buoys)

Besides E-SURFMAR buoys, 53 drifting buoys were reporting at least air pressure observations from the EUMETNET area of interest. Out of these, 5 were reporting Sea Surface Salinity, some in the frame of Spurs/Strasse campaign (validation of SMOS and Aquarius remote SSS measurements).

**Drifting buoys - New deployments**

WMO	Telcom	Typ	Ow	Dep_Date	DepLat	DepLon	From	Comment
2500615	61660360	MSB	EU	20140714	80.4	114.2	Helsingborg	Oden

-----  
**Operating drifting buoys in North Atlantic by the end of the month**

WMO	Telcom	Typ	Ow	nobs	Wi	AT	AP	dP	ST	Wa	Ws	Dr	Sb	U	SS	O	Start_end	Lat	Lon	Age
2500615	61660360	MSB	EU	421	-	-	X	X	X	-	-	X	-	-	-	T	1407-3107	80.84	113.65	16
2500618	60244420	MSB	EU	743	-	-	X	X	X	-	-	X	-	-	-	T	0107-3107	83.15	84.33	338
2500619	60276270	MSB	EU	743	-	-	X	X	X	-	-	X	-	-	-	T	0107-3107	83.28	37.24	337
2500624	60247420	MSB	EU	743	-	-	X	X	X	-	-	X	-	-	-	T	0107-3107	86.55	18.40	335
2500648	60370080	MSB	EU	743	-	-	X	X	X	-	-	X	-	-	-	T	0107-3107	86.31	57.69	325
2500652	60176700	MSB	EU	742	-	-	X	X	X	-	-	X	-	-	-	T	0107-3107	82.47	73.20	328
2600556	11549080	MSB	EU	518	-	-	X	X	-	-	-	X	-	-	-	T	0107-3107	78.93	-14.04	677
4100969	60213780	PSB	UP	743	-	-	X	X	X	-	-	X	-	-	-	T	0107-3107	32.19	-22.59	358
4100970	60213790	PSB	UP	711	-	-	X	X	X	-	-	X	-	-	-	T	0107-3107	27.53	-61.01	357
4100971	60215900	PSB	UP	744	-	-	X	X	X	-	-	X	-	-	-	T	0107-3107	36.29	-38.75	357
4100972	60217780	PSB	UP	705	-	-	X	X	X	-	-	X	-	-	-	T	0107-3107	29.60	-34.51	357
4400546	11160640	MSB	EU	735	-	-	X	X	X	-	-	X	-	-	-	T	0107-3107	33.90	-24.43	499
4400602	11468700	MSB	UP	742	-	-	X	X	X	-	-	X	-	-	-	T	0107-3107	54.20	-34.92	497
4400605	11473110	MSB	EU	742	-	-	X	X	X	-	-	X	-	-	-	T	0107-3107	45.11	-8.37	447
4400610	61517860	MSB	EU	744	-	-	X	X	X	-	-	X	-	-	-	T	0107-3107	53.35	-21.50	234
4400612	61511880	MSB	EU	743	-	-	X	X	X	-	-	X	-	-	-	T	0107-3107	50.61	-38.88	222
4400613	11475040	MSB	EU	742	-	-	X	X	X	-	-	X	-	-	-	T	0107-3107	39.73	-20.06	513
4400614	61661340	MSB	EU	732	-	-	X	X	X	-	-	X	-	-	-	T	0107-3107	52.61	-31.47	93
4400615	61666340	MSB	EU	744	-	-	X	X	X	-	-	X	-	-	-	T	0107-3107	61.02	-38.83	92
4400620	61667370	MSB	EU	743	-	-	X	X	X	-	-	X	-	-	-	T	0107-3107	57.13	-38.30	92
4400621	61519840	MSB	EU	735	-	-	X	X	X	-	-	X	-	-	-	T	0107-3107	57.18	-37.34	173
4400622	61668320	MSB	EU	744	-	-	X	X	X	-	-	X	-	-	-	T	0107-3107	51.27	-18.83	91
4400624	11341110	YSB	EU	735	-	-	X	X	X	-	-	X	-	-	-	T	0107-3107	37.12	-12.25	598
4400625	61668340	MSB	EU	743	-	-	X	X	X	-	-	X	-	-	-	T	0107-3107	54.41	-24.62	91
4400724	13300270	MSB	EU	741	-	-	X	X	X	-	-	X	-	-	-	T	0107-3107	63.86	-12.80	768
4400725	11027170	MSB	EU	743	-	-	X	X	X	-	-	X	-	-	-	T	0107-3107	22.08	-55.64	769
4400739	61516840	MSB	EU	743	-	-	X	X	X	-	-	X	-	-	-	T	0107-3107	44.45	-49.32	59
4400740	11883820	PSB	UP	744	-	-	X	X	X	-	-	X	-	-	-	T	0107-3107	26.02	-40.13	754
4400745	60899120	MSB	EU	743	-	-	X	X	X	-	-	X	-	-	-	T	0107-3107	41.40	-44.50	233
4400747	61610060	MSB	EU	657	-	-	X	X	X	-	-	X	-	-	-	T	0107-3107	60.48	-31.95	219
4400765	11685410	MSB	EU	742	-	-	X	X	X	-	-	X	-	-	-	T	0107-3107	46.14	-18.31	490
4400767	11919510	MSB	EU	743	-	-	X	X	X	-	-	X	-	-	-	T	0107-3107	27.53	-54.18	917
4400771	60507000	MSB	E2	741	-	-	X	X	X	-	-	X	-	-	-	T	0107-3107	58.41	-8.62	525
4400773	60211790	PSB	UP	744	-	-	X	X	X	-	-	X	-	-	-	T	0107-3107	27.40	-22.77	383
4400835	60218770	PSB	UP	743	-	-	X	X	X	-	-	X	-	-	-	T	0107-3107	47.07	-38.99	150
4400836	60218680	PSB	UP	743	-	-	X	X	X	-	-	X	-	-	-	T	0107-3107	51.17	-41.96	150

## E-SURFMAR DB Monthly Report July 2014

4400837	60209490	PSB	UP	742	-	-	X	X	X	-	-	X	-	-	-	T	0107-3107	47.46	-32.54	150
4400839	60205090	PSB	UP	743	-	-	X	X	X	-	-	X	-	-	-	T	0107-3107	41.96	-34.41	150
4400840	60208710	PSB	UP	743	-	-	X	X	X	-	-	X	-	-	-	T	0107-3107	47.21	-23.89	149
4400846	60441290	DSB	UP	739	-	-	X	X	X	-	-	X	-	-	-	T	0107-3107	37.38	-35.63	187
4400847	60442280	DSB	UP	740	-	-	X	X	X	-	-	X	-	-	-	T	0107-3107	40.52	-45.84	187
4400848	60448280	DSB	UP	741	-	-	X	X	X	-	-	X	-	-	-	T	0107-3107	41.13	-46.08	186
4400863	60211690	PSB	UP	744	-	-	X	X	X	-	-	X	-	-	-	T	0107-3107	35.50	-35.52	381
4400866	11793240	MSB	E2	742	-	-	X	X	X	-	-	X	-	-	-	T	0107-3107	57.71	-47.47	41
4400867	11593590	MSB	EU	741	-	-	X	X	X	-	-	X	-	-	-	T	0107-3107	56.49	-51.02	39
4400868	11794230	MSB	E2	743	-	-	X	X	X	-	-	X	-	-	-	T	0107-3107	28.31	-39.21	450
4400871	11790240	MSB	E2	742	-	-	X	X	X	-	-	X	-	-	-	T	0107-3107	51.68	-48.67	35
4400872	60202920	MSB	EU	742	-	-	X	X	X	-	-	X	-	-	-	T	0107-3107	50.86	-51.72	35
4400874	60213460	PSB	UP	737	-	-	X	X	X	-	-	X	-	-	-	T	0107-3107	40.09	-13.26	381
4400875	11021610	MSB	EU	742	-	-	X	X	X	-	-	X	-	-	-	T	0107-3107	28.07	-41.13	867
4400876	60648350	DSB	UP	739	-	-	X	X	X	-	-	X	-	-	-	T	0107-3107	39.01	-45.78	187
4400877	60526170	PSB	UP	742	-	-	X	X	X	-	-	X	-	-	-	T	0107-3107	44.18	-27.98	178
4400878	60528170	PSB	UP	742	-	-	X	X	X	-	-	X	-	-	-	T	0107-3107	43.63	-42.45	178
4400879	60554620	PSB	UP	743	-	-	X	X	X	-	-	X	-	-	-	T	0107-3107	46.58	-4.90	177
4400880	60656880	PSB	UP	743	-	-	X	X	X	-	-	X	-	-	-	T	0107-3107	45.39	-53.10	179
4400885	60218780	PSB	UP	743	-	-	X	X	X	-	-	X	-	-	-	T	0107-3107	40.12	-48.25	63
4400887	60251440	PSB	UP	743	-	-	X	X	X	-	-	X	-	-	-	T	0107-3107	35.46	-54.12	65
4400888	60359010	PSB	UP	743	-	-	X	X	X	-	-	X	-	-	-	T	0107-3107	41.71	-40.56	63
4400889	60202320	PSB	UP	670	-	-	X	X	X	-	-	X	-	-	-	T	0107-3107	37.74	-44.82	64
4400890	12000230	PSB	UP	743	-	-	X	X	X	-	-	X	-	-	-	T	0107-3107	35.53	-56.27	63
4400891	12007220	PSB	UP	743	-	-	X	X	X	-	-	X	-	-	-	T	0107-3107	35.20	-39.56	61
4400892	60018400	PSB	UP	735	-	-	X	X	X	-	-	X	-	-	-	T	0107-3107	40.46	-63.03	62
6200508	10759040	DSB	UP	740	-	-	X	X	X	-	-	X	-	-	-	T	0107-3107	44.30	-1.37	457
6200514	60203700	MSB	E2	741	-	-	X	X	X	-	-	X	-	-	-	T	0107-3107	66.70	-9.80	525
6200516	11475100	MSB	EU	742	-	-	X	X	X	-	-	X	-	-	-	T	0107-3107	35.13	-17.61	451
6200535	61660330	MSB	EU	744	-	-	X	X	X	-	-	X	-	-	-	T	0107-3107	54.14	-13.59	56
6200536	11599570	MSB	EU	742	-	-	X	X	X	-	-	X	-	-	-	T	0107-3107	56.39	-29.32	53
6200537	11791240	MSB	E2	741	-	-	X	X	X	-	-	X	-	-	-	T	0107-3107	55.93	-28.36	53
6200538	11460700	MSB	UP	742	-	-	X	X	X	-	-	X	-	-	-	T	0107-3107	62.27	-33.15	52
6200553	11165650	MSB	EU	741	-	-	X	X	X	-	-	X	-	-	-	T	0107-3107	62.12	-1.00	495
6200680	11166640	MSB	EU	716	-	-	X	X	X	-	-	X	-	-	-	T	0107-3107	65.62	-8.17	622
6200681	11168640	MSB	EU	742	-	-	X	X	X	-	-	X	-	-	-	T	0107-3107	51.52	-31.74	623
6200687	11349100	YSB	EU	740	-	-	X	X	X	-	-	X	-	-	-	T	0107-3107	74.06	9.17	602
6200695	60408990	MSB	E2	742	-	-	X	X	X	-	-	X	-	-	-	T	0107-3107	31.34	-17.35	451
6200713	11246980	YSB	EU	731	-	-	X	X	X	-	-	X	-	-	-	T	0107-3107	24.67	-33.00	597
6200714	11240980	YSB	EU	728	-	-	X	X	X	-	-	X	-	-	-	T	0107-3107	24.75	-28.94	594
6200729	60207600	PSB	UP	697	-	-	X	X	X	-	-	X	-	-	-	T	0107-3107	51.06	-19.34	148
6200940	60203850	PSB	UP	743	-	-	X	X	X	-	-	X	-	-	-	T	0107-3107	34.14	-34.80	60
6200941	61516840	PSB	UP	742	-	-	X	X	X	-	-	X	-	-	-	T	0107-3107	38.34	-30.80	60
6300639	11471050	MSB	EU	740	-	-	X	X	S	-	-	X	-	-	-	T	0107-3107	68.35	46.20	629
6300640	60172710	MSB	EU	743	-	-	X	X	X	-	-	X	-	-	-	T	0107-3107	76.34	34.12	352
6300642	11548080	MSB	EU	742	-	-	X	X	X	-	-	X	-	-	-	T	0107-3107	70.23	-3.18	774
6400516	11473100	MSB	EU	743	-	-	X	X	X	-	-	X	-	-	-	T	0107-3107	72.76	1.81	660
6400520	11479040	MSB	EU	742	-	-	X	X	X	-	-	X	-	-	-	T	0107-3107	68.41	-6.57	447
6400521	11470030	MSB	EU	742	-	-	X	X	X	-	-	X	-	-	-	T	0107-3107	74.87	-1.89	445
6400525	60175710	MSB	EU	742	-	-	X	X	X	-	-	X	-	-	-	T	0107-3107	65.97	0.48	349
6400607	11479100	MSB	EU	742	-	-	X	X	X	-	-	X	-	-	-	T	0107-3107	71.87	1.32	631
6400613	60174710	MSB	EU	743	-	-	X	X	X	-	-	X	-	-	-	T	0107-3107	69.05	4.85	334
6400614	60178700	MSB	EU	742	-	-	X	X	X	-	-	X	-	-	-	T	0107-3107	65.04	-29.96	330
6400615	60173700	MSB	EU	743	-	-	X	X	X	-	-	X	-	-	-	T	0107-3107	69.58	0.53	265
6400616	60178710	MSB	EU	742	-	-	X	X	X	-	-	X	-	-	-	T	0107-3107	62.60	-21.43	264
6400622	60172810	MSB	EU	742	-	-	X	X	X	-	-	X	-	-	-	T	0107-3107	65.37	-9.38	350
6400623	11470040	MSB	EU	743	-	-	X	X	X	-	-	X	-	-	-	T	0107-3107	75.84	16.40	446
6400664	60176710	MSB	EU	742	-	-	X	X	X	-	-	X	-	-	-	T	0107-3107	67.08	-11.73	248
6400665	60171710	MSB	EU	741	-	-	X	X	X	-	-	X	-	-	-	T	0107-3107	66.49	-0.47	246
6400666	60179710	MSB	EU	742	-	-	X	X	X	-	-	X	-	-	-	T	0107-3107	66.25	2.60	246
6400667	61615060	MSB	EU	743	-	-	X	X	X	-	-	X	-	-	-	T	0107-3107	59.70	-35.10	218
6400668	60177860	MSB	EU	724	-	-	X	X	X	-	-	X	-	-	-	T	0107-3107	71.13	-1.63	222
6400669	60177710	MSB	EU	741	-	-	X	X	X	-	-	X	-	-	-	T	0107-3107	65.00	-23.09	218
6400670	61513850	MSB	EU	743	-	-	X	X	X	-	-	X	-	-	-	T	0107-3107	64.51	-54.43	175
6400691	61514870	MSB	EU	716	-	-	X	X	X	-	-	X	-	-	-	T	0107-3107	61.15	-41.23	174
6400692	60172720	MSB	EU	742	-	-	X	X	X	-	-	X	-	-	-	T	0107-3107	63.95	-8.23	161
6400693	60173720	MSB	EU	742	-	-	X	X	X	-	-	X	-	-	-	T	0107-3107	63.62	-22.49	155
6500595	11595570	MSB	EU	742	-	-	X	X	X	-	-	X	-	-	-	T	0107-3107	62.93	-55.17	45
6500596	61511850	MSB	EU	741	-	-	X	X	X	-	-	X	-	-	-	T	0107-3107	62.71	-53.27	43
6500597	11595650	MSB	EU	741	-	-	X	X	X	-	-	X	-	-	-	T	0107-3107	60.64	-35.07	49
6500598	11792240	MSB	E2	728	-	-	X	X	X	-	-	X	-	-	-	T	0107-3107	50.00	-48.72	37

## E-SURFMAR DB Monthly Report July 2014

-----  
**Drifting buoys which ceased to be operational**

WMO	Telcom	Typ	Ow	End_Date	Lat	Lon	Age	Cause
4400850	60648340	DSB	UP	20140730	40.9	-28.9	187	Wrong AP values - had been rehabilitated
4400869	11026040	MSB	EU	20140715	26.9	-40.2	883	Wrong AP values
4400886	60219900	PSB	UP	20140729	37.6	-44.2	62	Unknown
6200520	13611180	MSB	EU	20140721	24.0	-74.6	446	Unknown - Was ashore in Bahamas
6200534	11683400	MSB	EU	20140729	59.4	-7.0	308	Picked up ? (unknown otherwise)

-----  
**Non-operating drifting buoys reporting GTS data**

WMO	Telcom	Typ	Ow	nobs	Wi	AT	AP	dP	ST	Wa	Ws	Dr	Sb	U	SS	O	Start_end	Lat	Lon	Age
4400850	60648340	DSB	UP	741	-	-	S	S	X	-	-	X	-	-	-	T	0107-3107	40.93	-28.87	187
4400869	11026040	MSB	EU	743	-	-	S	S	X	-	-	X	-	-	-	T	0107-3107	26.93	-40.23	883

-----  
**Other operating drifting buoys inside the EUMETNET by the end of the month**

WMO	Telcom	Typ	Ow	nobs	Wi	AT	AP	dP	ST	Wa	Ws	Dr	Sb	U	SS	O	Start_end	Lat	Lon
1300633	109491	AOML		724	-	-	X	X	X	-	-	X	-	-	-	L	0107-3107	37.24	-32.70
1300659	11910180	UKMO		743	-	-	X	X	X	-	-	X	-	-	-	T	0107-3107	22.90	-40.10
1300660	11022040	UKMO		743	-	-	X	X	X	-	-	X	-	-	-	T	0107-3107	28.45	-53.13
1300662	11098800	UKMO		743	-	-	X	X	X	-	-	X	-	-	-	T	0107-3107	22.76	-33.98
1300664	11090810	UKMO		734	-	-	X	X	X	-	-	X	-	-	-	T	0107-3107	24.50	-36.38
1300667	60898000	UKMO		662	-	-	X	X	X	-	-	X	-	-	-	T	0407-3107	12.80	-18.16
1300668	60897010	UKMO		562	-	-	X	X	S	-	-	X	-	-	-	T	0807-3107	5.12	-10.74
1500549	60794980	UKMO		562	-	-	X	X	X	-	-	X	-	-	-	T	0807-3107	1.74	-22.94
2500584	2500584	PSC		737	-	-	X	X	X	-	-	X	-	-	-	T	0107-3107	85.24	28.88
2600535	971540	PSC		744	-	X	X	X	-	-	-	-	-	-	-	O	0107-3107	80.91	31.44
3100862	61213570	LOCE		1486	-	-	X	X	X	-	-	X	-	-	X	T	0107-3107	5.14	-27.00
4100560	114550	AOML		740	-	-	X	-	-	-	-	X	-	-	-	L	0107-3107	41.38	-23.16
4100562	114558	AOML		715	-	-	X	-	X	-	-	X	-	-	-	L	0107-3107	35.41	-67.43
4100564	109221	AOML		729	-	-	X	-	X	-	-	X	-	-	-	L	0107-3107	36.66	-43.55
4100596	11473050	EUME		742	-	-	X	X	X	-	-	X	-	-	-	T	0107-3107	20.64	-53.16
4100597	61512840	AOML		468	-	-	X	X	X	-	-	X	-	-	-	T	1207-3107	18.74	-43.75
4100598	61610040	AOML		483	-	-	X	X	X	-	-	X	-	-	-	T	1107-3107	20.04	-39.77
4100599	61615070	AOML		458	-	-	X	X	X	-	-	X	-	-	-	T	1207-3107	14.03	-47.58
4100600	61618040	AOML		445	-	-	X	X	X	-	-	X	-	-	-	T	1307-3107	13.09	-47.73
4100632	11474050	EUME		742	-	-	X	X	X	-	-	X	-	-	-	T	0107-3107	21.81	-57.09
4100705	11596570	AOML		742	-	-	X	X	X	-	-	X	-	-	-	T	0107-3107	28.75	-47.65
4100707	11590580	AOML		740	-	-	X	X	X	-	-	X	-	-	-	T	0107-3107	18.37	-57.12
4100708	11585510	AOML		735	-	-	X	X	X	-	-	X	-	-	-	T	0107-3107	23.05	-66.71
4100709	11598570	AOML		742	-	-	X	X	X	-	-	X	-	-	-	T	0107-3107	29.32	-64.90
4100711	11477030	EUME		742	-	-	X	X	X	-	-	X	-	-	-	T	0107-3107	27.13	-57.02
4100736	60216450	LOCE		1486	-	-	X	X	X	-	-	X	-	-	X	T	0107-3107	20.57	-66.35
4100737	60342390	CMM		667	-	-	X	X	X	-	-	X	-	-	X	T	0107-3107	25.54	-43.91
4100800	60547830	CMM		714	-	-	X	X	X	-	-	X	-	-	X	T	0107-3107	24.54	-42.77
4100929	101720	AOML		691	-	-	X	X	X	-	-	X	-	-	-	L	0107-3107	39.30	-38.85
4100936	109488	AOML		696	-	-	X	X	X	-	-	X	-	-	-	L	0107-3107	31.23	-67.83
4100975	109439	AOML		725	-	-	X	X	X	-	-	X	-	-	-	L	0107-3107	36.41	-60.85
4100999	114623	AOML		603	-	-	X	X	X	-	-	X	-	-	-	L	0107-3107	29.51	-52.47
4400505	98087	ICEP		1661	-	-	X	X	X	-	-	-	-	-	-	L	0107-3107	47.73	-45.64
4400514	126483	AOML		741	-	-	X	X	X	-	-	X	-	-	-	L	0107-3107	43.65	-42.76
4400516	114599	AOML		585	-	-	X	X	X	-	-	X	-	-	-	L	0107-3107	30.15	-56.18
4400554	126479	AOML		736	-	-	X	X	X	-	-	X	-	-	-	L	0107-3107	33.62	-37.33
4400558	123286	AOML		743	-	-	X	X	X	-	-	X	-	-	-	L	0107-3107	37.38	-54.10
4400560	126480	AOML		739	-	-	X	X	X	-	-	X	-	-	-	L	0107-3107	43.50	-59.08
4400562	126482	AOML		739	-	-	X	X	X	-	-	X	-	-	-	L	0107-3107	34.85	-56.02
4400690	11248370	EC		744	-	-	X	X	X	-	-	X	-	-	-	O	0107-3107	50.85	-22.73
4400896	109438	AOML		731	-	-	X	X	X	-	-	X	-	-	-	L	0107-3107	36.77	-43.57
4700501				744	-	-	X	X	X	-	-	-	-	-	-	O	0107-3107	84.78	-39.88
4700502	61366400	PSC		744	-	-	X	X	X	-	-	-	-	-	-	O	0107-3107	84.45	-22.95
4700577	11096790	EC/M		744	-	X	X	-	-	-	-	-	-	-	-	O	0107-3107	84.47	-46.15
4700578	11985170	EC/M		744	-	-	X	X	X	-	-	-	-	-	-	O	0107-3107	83.89	-31.19
4700579	11097780	EC/M		744	-	-	X	X	X	-	-	-	-	-	-	O	0107-3107	79.09	4.38
4700580	11884900	EC/M		736	-	-	X	X	X	-	-	-	-	-	-	O	0107-3107	78.05	6.45
4800520	46517	PSC		744	-	X	X	X	-	-	-	-	-	-	-	L	0107-3107	75.72	-19.23
4800568	61363210	PSC		744	-	-	X	X	X	-	-	-	-	-	-	O	0107-3107	88.11	-33.79
6200500	60565810	CMM		724	-	-	X	X	X	-	-	X	-	-	X	T	0107-3107	60.67	-33.04

## E-SURFMAR DB Monthly Report July 2014

6300544	973540	PSC	248	-	X	X	X	X	-	-	-	-	X	-	O	0107-3107	84.34	16.39
6300545	61367410	PSC	743	-	-	X	X	X	-	-	X	-	-	-	O	0107-3107	85.57	1.09
6300546	61361200	PSC	744	-	-	X	X	X	-	-	-	-	-	-	O	0107-3107	84.80	8.60

### ----- Abbreviations -----

WMO : WMO id.  
 Argos : Argos id.  
 Typ : Buoy type  
     - first character : Manufacturer (C = ConMar , M = Metocean, P = Pacific Gyre  
   T = Technocean, Y = Marlin-Yug...)  
     - second character : Main type (F = FGGE, I = ICEB, S = SVP)  
     - third character : Sub type (B = barometer buoy, W = Wind buoy,  
   S = Salinity buoy)

Ow : Buoy owner (country code or EU for EUCOS, E2 for HRSST-2 buoys, UP for upgraded buoys)  
 Owner : Buoy owner for non EUCOS buoys  
 Nobs : number of GTS reports received at Meteo-France  
 Parameters (X = OK, S = stopped, - = not measured) :  
     Wi : Wind  
     AT : Air Temperature  
     AP : Air Pressure  
     dP : Air pressure tendency  
     ST : Sea surface Temperature  
     Wa : Wave period and height  
     Ws : Wave spectra  
     Dr : Drogue presence  
     Sb : Subsurface temperature  
     U : Relative humidity  
     SS : Sea surface Salinity

O : Origin of the reports (T = Argos Toulouse, L = Argos Largo, O = Other)  
 Start\_end : first and last dates of the month for which GTS data were received at Meteo-France  
 Lat : Latitude of the latest position  
 Lon : Longitude of the latest position  
 Age : Age of the buoy (days)

DepDate : Date of deployment  
 DepLat : Latitude of deployment  
 Dep Lon : Longitude of Deployment  
 From : Harbour of departure

Definition : An operating drifting buoy is a buoy providing at least air pressure or wind (direction and velocity) data.

**E-SURFMAR DB Monthly Report  
July 2014**

-----  
**MOORED BUOYS**  
-----

**Former EGOS stations (K-pattern and Hydrosphere)**

WMO	Name	nobs	Wi	AT	AP	dP	ST	Wa	Ws	Dr	Sb	U	SS	O	Start_end	Lat	Lon	
6100001	Cote d'Azur	743	X	X	X	X	X	X	-	-	X	-	T	0107-3107	43.40	7.80		
<b>6100002</b>	<b>Lion</b>	<b>738</b>	<b>X</b>	<b>X</b>	<b>X</b>	<b>X</b>	<b>X</b>	<b>X</b>	-	-	-	-	<b>T</b>	<b>0107-3107</b>	<b>42.10</b>	<b>4.70</b>		
6200001	Gascogne	742	X	X	X	X	X	X	-	-	X	-	O	0107-3107	45.30	-5.00		
6200029	K1	503	X	X	X	-	X	X	-	-	X	-	O	0107-3107	48.70	-12.50		
6200081	K2	742	X	X	X	X	X	X	-	-	X	-	O	0107-3107	51.00	-13.20		
6200090	M1	-	-	-	-	-	-	-	-	-	-	-	-	-	53.10	-11.20		
6200091	M2	134	X	X	X	-	X	X	-	-	X	-	O	2507-3107	53.50	-5.40		
6200092	M3	739	X	X	X	-	X	X	-	-	X	X	O	0107-3107	51.20	-10.50		
6200093	M4	742	X	X	X	-	X	X	-	-	-	-	O	0107-3107	54.70	-9.10		
6200094	M5	741	-	X	X	-	S	-	-	-	S	-	O	0107-3107	51.70	-6.70		
<b>6200095</b>	<b>M6</b>	<b>740</b>	<b>X</b>	<b>X</b>	<b>X</b>	<b>X</b>	<b>X</b>	<b>X</b>	-	-	-	<b>X</b>	-	<b>O</b>	<b>0107-3107</b>	<b>53.10</b>	<b>-15.90</b>	
6200105	K4	741	X	X	X	X	X	X	-	-	X	-	O	0107-3107	55.80	-11.40		
6200108	K3	-	-	-	-	-	-	-	-	-	-	-	-	-	53.50	-19.50		
6200163	Brittany	722	X	X	X	X	X	X	-	-	X	-	O	0107-3107	47.50	-8.40		
<b>6400045</b>	<b>K5</b>	<b>742</b>	<b>X</b>	<b>X</b>	<b>X</b>	<b>X</b>	<b>X</b>	<b>X</b>	-	-	<b>X</b>	-	<b>O</b>	<b>0107-3107</b>	<b>59.10</b>	<b>-11.70</b>		
6400046	K7	743	X	X	X	-	X	X	-	-	X	-	O	0107-3107	60.70	-5.20		

Comments:

- EUMETNET moored buoys are presented in bold characters.

-----  
**Former EGOS moored buoys (Spanish SeaWatch and WaveScan)**

WMO	Name	nobs	Wi	AT	AP	dP	ST	Wa	Ws	Dr	Sb	U	SS	O	Start_end	Lat	Lon
1300130	Gran Canaria	699	X	X	X	-	X	X	X	-	-	X	O	0107-3107	28.18	-15.82	
1300131	Tenerife Sur	696	X	X	X	-	X	X	X	-	-	-	O	0107-3107	28.00	-16.58	
6100196	C. Begur	-	-	-	-	-	-	-	-	-	-	-	-	-	41.92	3.65	
6100197	Mahon	700	X	S	X	-	X	X	X	-	-	-	O	0107-3107	39.72	4.42	
6100198	C. de Gata	659	X	X	X	-	X	X	X	-	-	X	O	0107-3107	36.57	-2.33	
6100280	Tarragona	701	X	X	X	-	X	X	X	-	-	X	O	0107-3107	40.77	1.47	
6100281	Valencia	693	X	X	X	-	X	X	X	-	-	X	O	0107-3107	39.47	-0.27	
6100417	C. de Palos	677	X	X	X	-	X	X	X	-	-	X	O	0107-3107	37.65	-0.32	
6100430	Dragonera	700	X	X	X	-	X	X	X	-	-	-	O	0107-3107	39.56	2.11	
6200024	Bilbao-Visc.	698	X	X	X	-	X	X	X	-	-	X	O	0107-3107	43.63	-3.03	
6200025	C. de Penas	691	X	X	X	-	X	X	X	-	-	X	O	0107-3107	43.73	-6.17	
6200082	E. de Bares	693	X	X	X	-	X	X	X	-	-	X	O	0107-3107	44.13	-7.69	
6200083	Villano-Sis.	692	X	X	X	-	X	X	X	-	-	X	O	0107-3107	43.48	-9.22	
<b>6200084</b>	<b>C. Silleiro</b>	<b>691</b>	<b>X</b>	<b>X</b>	<b>X</b>	-	<b>X</b>	<b>X</b>	<b>X</b>	-	-	<b>X</b>	<b>O</b>	<b>0107-3107</b>	<b>42.12</b>	<b>-9.43</b>	
6200085	G. de Cadiz	701	X	X	X	-	X	X	X	-	-	X	O	0107-3107	36.48	-9.97	
6201030	Santander	530	S	S	S	-	S	S	X	-	-	S		0107-2407	43.84	-3.77	

Comments:

- The EUMETNET buoy is presented in bold characters.

-----  
**Operating ISPRA moored buoys (Italy)**

WMO	Name	nobs	Wi	AT	AP	dP	ST	Wa	Ws	Dr	Sb	U	SS	O	Start_end	Lat	Lon
6100207		1316	-	-	X	-	X	X	-	-	-	-	O	0307-3107	37.44	15.15	
6100208		1409	-	-	X	-	X	X	-	-	-	-	O	0107-3107	37.52	12.53	
6100209		1278	-	-	X	-	X	X	-	-	-	-	O	0107-3107	38.26	13.33	
6100210		1395	-	-	X	-	X	X	-	-	-	-	O	0107-3107	39.02	17.22	
6100211		1300	-	-	X	-	X	X	-	-	-	-	O	0107-3107	39.45	15.92	
6100212		-	-	-	-	-	-	-	-	-	-	-	-	-	40.62	9.89	
6100213		1368	-	-	X	-	X	X	-	-	-	-	O	0107-3107	40.55	8.11	
6100214		1306	-	-	X	-	X	X	-	-	-	-	O	0107-3107	40.87	12.95	
6100215		1345	-	-	-	-	X	X	-	-	-	-	O	0107-3107	40.98	17.38	
6100216		1335	-	-	X	-	X	X	-	-	-	-	O	0107-3107	42.24	11.55	
6100218		-	-	-	-	-	-	-	-	-	-	-	-	-	43.83	13.72	
6100219		1292	-	-	X	-	X	X	-	-	-	-	O	0107-3107	43.93	9.83	

## E-SURFMAR DB Monthly Report July 2014

6100220	1308	-	-	X	-	X	X	-	-	-	-	-	O	0107-3107	45.33	12.52
6100221	1349	-	-	X	-	X	X	-	-	-	-	-	O	0107-3107	39.12	9.40

-----  
**Operating POSEIDON moored buoys (Greece)**

WMO	Name	nobs	Wi	AT	AP	dP	ST	Wa	Ws	Dr	Sb	U	SS	O	Start_end	Lat	Lon
6101000			-	-	-	-	-	-	-	-	-	-	-			39.10	24.50
6101001		212	X	X	X	-	X	X	-	-	-	-	-	O	0107-3107	37.60	23.60
6101002			-	-	-	-	-	-	-	-	-	-	-			37.00	22.10
6101003		217	X	-	X	-	X	X	-	-	-	-	-	O	0107-3107	40.00	24.70
6101004			-	-	-	-	-	-	-	-	-	-	-			39.10	25.80
6101005			-	-	-	-	-	-	-	-	-	-	-			37.50	25.50
6101006			-	-	-	-	-	-	-	-	-	-	-			36.30	25.50
6101007		169	X	X	X	-	X	X	-	-	-	-	-	O	0107-3107	35.80	24.90
6101008		214	X	X	X	-	X	X	-	-	-	-	-	O	0107-3107	36.80	21.60
6101009			-	-	-	-	-	-	-	-	-	-	-			38.00	20.60

-----  
**Other European moored buoys (operated by 3rd parties)**

WMO	Name	nobs	Wi	AT	AP	dP	ST	Wa	Ws	Dr	Sb	U	SS	O	Start_end	Lat	Lon
1200050	Cycofos	531	-	-	S	S	-	-	-	-	-	-	-		0107-2307	33.60	31.90
6100010	Italia-1		-	-	-	-	-	-	-	-	-	-	-			43.80	9.10
6200027	Jersey	249	X	-	X	X	-	X	-	-	-	-	-	O	0107-3107	49.08	-22.20
6200030	L4	733	X	X	X	-	X	-	-	-	-	X	-	O	0107-3107	50.25	-4.22
6200050	E1		-	-	-	-	-	-	-	-	-	-	-			50.04	-4.37
6200086	NSB II	38	S	S	S	S	S	-	-	-	-	S	-		1707-1807	55.00	6.40
6200087	NSB III	731	S	X	X	X	X	-	-	-	-	X	-	O	0107-3107	54.70	6.80
6200191	Porto	701	X	X	X	-	X	X	-	-	-	-	-	O	0107-3107	41.15	-9.57
6200192	Peniche	699	X	X	X	-	X	X	-	-	-	-	-	O	0107-3107	39.50	-9.65
6200303	Turbo Bank	415	-	-	-	-	-	X	-	-	-	-	-	O	0207-3107	51.60	-5.10
6200442	PAP	325	X	X	X	-	X	-	-	-	-	X	-	O	1807-3107	49.00	-16.40
6600021	Arkona Becken	737	X	X	-	-	X	-	-	-	-	-	-	O	0107-3107	54.90	13.90
6600022	Oder Bank	707	X	X	-	-	X	-	-	-	-	-	-	O	0107-3107	54.10	14.20
6600024	Darsser Schwell	741	X	X	-	-	X	-	-	-	-	-	-	O	0107-3107	54.70	12.70

The Cycofos moored buoy was replaced on July 23rd. Unfortunately, its BaRos AWS does not work.

-----  
**Other offshore moored buoys inside the EUMETNET area**

WMO	Name	nobs	Wi	AT	AP	dP	ST	Wa	Ws	Dr	Sb	U	SS	O	Start_end	Lat	Lon
1300001		573	X	X	X	-	X	-	-	-	-	X	-	L	0107-3107	11.47	-23.00
1300008		377	S	-	S	-	S	-	-	-	-	-	-		0107-2707	14.98	-38.02
1300308	East Atlantic		-	-	-	-	-	-	-	-	-	-	-			15.00	-38.00
4100026		428	-	X	-	-	X	-	-	-	-	X	-	L	0107-3007	11.49	-38.40
4100040	West Atlantic	742	X	X	X	X	X	X	-	-	-	X	-	O	0107-3107	14.50	-53.00
4100041	Mid. Atlantic	731	X	X	X	X	X	X	-	-	-	-	-	O	0107-3107	14.50	-46.00
4100043	Porto Rico	731	X	X	X	X	X	X	-	-	-	X	-	O	0107-3107	21.00	-65.00
4100044		739	X	X	X	X	X	X	-	-	-	X	-	O	0107-3107	21.70	-58.70
4100046		740	X	X	X	X	X	X	-	-	-	X	-	O	0107-3107	23.90	-70.90
4100047			-	-	-	-	-	-	-	-	-	-	-			27.50	-71.50
4100048		740	X	X	X	X	X	X	-	-	-	X	-	O	0107-3107	32.00	-69.60
4100049		737	X	X	X	X	X	X	-	-	-	X	-	O	0107-3107	27.50	-53.00
4100139		570	X	X	X	-	X	-	-	-	-	X	-	L	0107-3107	20.02	-37.86
4100300	Antilles		-	-	-	-	-	-	-	-	-	-	-			15.85	-57.47
4200059	Caraibes	739	X	X	X	X	X	X	-	-	-	X	-	O	0107-3107	15.00	-67.50
4400008	A Nantucket		-	-	-	-	-	-	-	-	-	-	-			40.50	-69.40
4400011	D Georges Bk		-	-	-	-	-	-	-	-	-	-	-			41.10	-66.60
4400018	SE Cape Cod		-	-	-	-	-	-	-	-	-	-	-			41.30	-69.30
4400024	NNE Channel	637	X	X	X	-	X	X	-	-	-	-	-	O	0107-3107	42.30	-65.90
4400137	E Scotia Sl.	739	X	X	X	X	X	X	-	-	-	-	-	O	0107-3107	42.30	-62.00
4400138	SW Gd Banks		-	-	-	-	-	-	-	-	-	-	-			44.30	-53.60
4400139	Beanquereau	638	X	X	X	X	X	X	-	-	-	-	-	O	0107-3107	44.30	-57.10
4400140	Tail of Bk		-	-	-	-	-	-	-	-	-	-	-			43.80	-51.70
4400141	Larentian F	733	X	X	X	X	X	X	-	-	-	-	-	O	0107-3107	43.00	-58.00
4400150	La Have Bk	739	X	X	X	X	X	X	-	-	-	-	-	O	0107-3107	42.50	-64.00



# E-SURFMAR DB Monthly Report July 2014

## Buoy-QC statistics from Meteo-France model outputs

*Datend* : Date of the last value received on GTS  
*Recvd* : Total number of values received on GTS  
*GE* : Number of Gross Errors (excluded from bias and sd computations)  
*bias* : Mean differences between observation values and co-located model output values  
*Std* : Standard deviation of differences

### Air Pressure (hPa), drifting buoys, July 2014

Datend	WMO	Telcom	Recvd	GE	Bias	Std
20140731	2500615	61660360	421	0	0.0	0.4
20140731	2500618	60244420	743	0	-0.1	0.4
20140731	2500619	60276270	743	0	-0.2	0.3
20140731	2500624	60247420	743	0	0.1	0.2
20140731	2500648	60370080	743	0	-0.0	0.3
20140731	2500652	60176700	742	0	-0.1	0.3
20140731	2600556	11549080	518	0	-0.2	0.4
20140731	4100969	60213780	743	0	-0.3	0.3
20140731	4100970	60213790	711	0	0.4	0.5
20140731	4100971	60215900	744	0	-0.0	0.2
20140731	4100972	60217780	705	0	0.0	0.3
20140731	4400546	11160640	735	0	-0.1	0.3
20140731	4400602	11468700	742	0	-0.2	0.4
20140731	4400605	11473110	742	0	-0.2	0.3
20140731	4400610	61517860	744	0	0.3	0.4
20140731	4400612	61511880	743	0	-0.1	0.5
20140731	4400613	11475040	742	0	-0.3	0.3
20140731	4400614	61661340	732	0	0.8	0.5
20140731	4400615	61666340	744	0	-0.6	0.5
20140731	4400620	61667370	743	0	0.2	0.4
20140731	4400621	61519840	735	0	0.3	0.5
20140731	4400622	61668320	744	0	0.3	0.4
20140731	4400624	11341110	735	0	-0.0	0.4
20140731	4400625	61668340	743	0	0.2	0.4
20140731	4400724	13300270	741	0	-0.6	0.4
20140731	4400725	11027170	743	0	0.2	0.5
20140731	4400739	61516840	743	0	0.6	0.4
20140731	4400740	11883820	744	0	-0.1	0.3
20140731	4400745	60899120	743	0	0.2	0.3
20140731	4400747	61610060	657	0	-0.2	0.5
20140731	4400765	11685410	742	0	0.3	0.3
20140731	4400767	11919510	743	0	0.1	0.5
20140731	4400771	60507000	741	0	-0.1	0.4
20140731	4400773	60211790	744	0	0.2	0.3
20140731	4400835	60218770	743	0	-0.2	0.4
20140731	4400836	60218680	743	0	0.0	0.4
20140731	4400837	60209590	742	0	0.1	0.4
20140731	4400839	60205090	743	0	0.0	0.4
20140731	4400840	60208710	743	0	0.2	0.3
20140731	4400846	60441290	739	0	0.4	0.2
20140731	4400847	60442280	740	0	0.3	0.4
20140731	4400848	60448280	741	0	0.3	0.3
<b>20140730</b>	<b>4400850</b>	<b>60648340</b>	<b>665</b>	<b>14</b>	<b>1.7</b>	<b>1.9</b>
20140731	4400876	60648350	739	0	0.6	0.3
20140731	4400863	60211690	744	0	0.0	0.2
20140731	4400866	11793240	742	0	-0.3	0.4
20140731	4400867	11593590	741	0	-0.3	0.4
20140731	4400868	11794230	743	0	0.1	0.3
<b>20140715</b>	<b>4400869</b>	<b>11026040</b>	<b>346</b>	<b>0</b>	<b>-2.1</b>	<b>2.5</b>
20140731	4400871	11790240	742	0	-0.2	0.4
20140731	4400872	60202920	742	0	-0.4	0.4
20140731	4400874	60213460	737	0	0.3	0.4
20140731	4400875	11021610	742	0	0.1	1.2
20140731	4400876	60648350	739	0	0.6	0.3
20140731	4400877	60526170	742	0	-0.0	0.3
20140731	4400878	60528170	742	0	0.1	0.4
20140731	4400879	60554620	743	0	-0.0	0.3
20140731	4400880	60556880	743	0	0.0	0.4
20140731	4400885	60218780	743	0	-0.1	0.3
20140729	4400886	60219900	682	0	0.1	0.3
20140731	4400887	60251440	743	0	0.1	0.4
20140731	4400888	60359010	743	0	-0.1	0.3
20140731	4400889	60202320	670	0	-0.0	0.3

## E-SURFMAR DB Monthly Report July 2014

20140731	4400890	12000230	743	0	-0.0	0.4
20140731	4400891	12007220	743	0	-0.1	0.3
20140731	4400892	60018400	735	0	0.2	0.5
20140731	6200508	10759040	740	0	0.5	0.5
20140731	6200514	60203700	741	0	-0.1	0.4
20140731	6200516	11475100	742	0	0.2	0.3
20140721	6200520	13611180	497	0	-0.0	1.1
20140729	6200534	11683400	658	0	-0.3	0.3
20140731	6200535	61660330	744	0	0.1	0.4
20140731	6200536	11599570	742	0	-0.4	0.4
20140731	6200537	11791240	741	0	-0.3	0.4
20140731	6200538	11460700	742	0	-0.1	0.4
20140731	6200553	11165650	741	0	0.0	0.4
20140731	6200680	11166640	716	0	-0.3	0.4
20140731	6200681	11168640	742	0	-0.3	0.4
20140731	6200687	11349100	740	0	0.0	0.3
20140731	6200695	60408990	742	0	0.1	0.3
20140731	6200713	11246980	731	0	-0.0	0.3
20140731	6200714	11240980	728	0	-0.0	0.3
20140730	6200729	60207600	697	0	-0.1	0.4
20140731	6200940	60203850	743	0	0.0	0.3
20140731	6200941	60207590	742	0	-0.1	0.3
20140731	6300639	11471050	740	0	-0.3	0.3
20140731	6300640	60172710	743	0	0.1	0.4
<b>20140731</b>	<b>6300642</b>	<b>11548080</b>	<b>742</b>	<b>54</b>	<b>0.5</b>	<b>1.3</b>
20140731	6400516	11473100	743	0	-0.1	0.3
20140731	6400520	11479040	742	0	-0.2	0.4
20140731	6400521	11470030	742	0	-0.0	0.4
20140731	6400525	60175710	742	0	0.0	0.4
20140731	6400607	11479100	742	0	0.0	0.3
20140731	6400613	60174710	743	0	0.1	0.4
20140731	6400614	60178700	742	0	-0.2	0.4
20140731	6400615	60173700	743	0	0.5	0.3
20140731	6400616	60178710	742	0	0.1	0.4
20140731	6400622	60172810	742	0	-0.1	0.4
20140731	6400623	11470040	743	0	-0.1	0.3
20140731	6400664	60176710	742	0	-0.2	0.4
20140731	6400665	60171710	741	0	0.2	0.4
20140731	6400666	60179710	742	0	0.3	0.4
20140731	6400667	61615060	743	0	-0.0	0.5
20140731	6400668	60177860	724	0	0.3	0.4
20140731	6400669	60177710	741	0	-0.0	0.6
20140731	6400670	61513850	743	0	0.3	0.4
20140731	6400691	61514870	716	0	0.4	0.4
20140731	6400692	60172720	742	0	0.2	0.4
20140731	6400693	60173720	742	0	0.1	0.4
20140731	6500595	11595570	742	0	-0.5	0.3
20140731	6500596	61511850	741	0	0.5	0.3
20140731	6500597	11595650	741	0	-0.4	0.4
20140731	6500598	11792240	728	0	-0.1	0.4

### Air Pressure (hPa), moored buoys, July 2014

Datend	WMO	Telcom	Recvd	GE	Bias	Std
20140723	1200050		531	0	0.3	0.4
20140731	1300130		699	0	0.8	0.6
20140731	1300131		696	0	0.3	0.6
20140731	6100001		743	0	-0.1	0.5
20140731	6100002		734	0	0.3	0.5
20140731	6100197		700	0	0.6	0.6
20140731	6100198		659	0	0.3	0.6
20140731	6100207		1316	0	0.8	0.5
20140731	6100208		1409	0	-0.9	0.5
20140731	6100209		1278	0	-0.6	0.6
<b>20140731</b>	<b>6100210</b>		<b>1395</b>	<b>0</b>	<b>1.2</b>	<b>0.6</b>
20140731	6100211		1300	0	0.5	0.5
<b>20140731</b>	<b>6100213</b>		<b>1368</b>	<b>0</b>	<b>1.3</b>	<b>0.5</b>
20140731	6100214		1306	0	0.2	0.6
20140731	6100216		1335	0	0.4	0.5
20140731	6100219		1292	0	-0.1	0.5
20140731	6100220		1308	0	0.4	0.5
20140731	6100221		1349	0	-0.4	0.6
20140731	6100280		701	0	0.7	0.6
20140731	6100281		693	0	0.5	0.8
20140731	6100417		677	0	0.6	0.6

**E-SURFMAR DB Monthly Report  
July 2014**

20140731	6100430	700	0	0.4	0.6
20140731	6101001	212	0	0.7	0.5
<b>20140731</b>	<b>6101003</b>	<b>217</b>	<b>0</b>	<b>1.2</b>	<b>0.5</b>
20140731	6101007	167	0	0.4	0.6
20140731	6101008	214	0	0.5	0.6
20140731	6200001	742	0	0.3	0.4
20140731	6200024	698	0	0.4	0.6
20140731	6200025	691	0	0.4	0.5
20140731	6200027	244	0	-0.0	0.4
20140731	6200029	503	0	0.2	0.4
20140731	6200030	733	0	-0.1	0.4
20140731	6200081	742	0	0.3	0.4
20140731	6200082	693	0	0.5	0.5
20140731	6200083	690	0	0.5	0.5
20140731	6200084	691	0	0.6	0.5
20140731	6200085	701	0	0.6	0.5
20140718	6200086	38	0	0.3	0.3
20140731	6200087	731	3	0.0	0.4
20140731	6200091	134	0	0.1	0.3
20140731	6200092	739	0	-0.0	0.4
20140731	6200093	742	0	0.0	0.4
20140731	6200094	741	0	0.2	0.4
20140731	6200095	740	2	-0.0	0.7
20140731	6200105	741	0	0.0	0.5
20140731	6200163	721	0	0.3	0.5
20140731	6200191	701	0	0.7	0.4
20140731	6200192	699	0	0.8	0.4
20140731	6200442	325	0	0.2	0.3
20140731	6400045	742	0	0.1	0.4
20140731	6400046	743	0	0.3	0.5

**Air Temperature (C), moored buoys, July 2014**

Datend	WMO	Telcom	Recvd	GE	Bias	Std
20140731	1300130		696	0	-0.6	1.5
20140731	1300131		695	0	1.1	0.5
20140731	6100001		743	0	-0.0	1.0
20140731	6100002		735	0	0.2	1.0
20140731	6100197		546	0	-0.0	0.5
20140731	6100198		658	0	-0.1	1.1
20140731	6100280		701	0	-0.1	0.8
20140731	6100281		693	0	-0.4	0.8
20140731	6100417		676	0	-0.0	0.4
20140731	6100430		700	0	-0.2	0.5
20140731	6101001		212	0	-0.0	0.8
<b>20140731</b>	<b>6101007</b>		<b>167</b>	<b>0</b>	<b>2.1</b>	<b>1.5</b>
20140731	6101008		214	0	-0.5	0.7
20140731	6200001		742	0	-0.1	0.5
20140731	6200024		698	0	0.7	0.6
20140731	6200025		682	0	0.3	0.7
20140731	6200029		503	0	0.4	0.5
20140731	6200030		733	0	-0.5	0.6
20140731	6200081		742	0	0.1	0.5
20140731	6200082		689	0	0.1	0.6
20140731	6200083		690	0	0.1	0.4
20140731	6200084		690	0	-0.1	0.8
20140731	6200085		701	0	-0.1	0.8
20140718	6200086		38	0	0.0	0.7
20140731	6200087		734	4	0.2	0.6
20140731	6200091		134	0	0.0	0.5
20140731	6200092		739	0	0.2	0.5
20140731	6200093		742	0	0.1	0.5
20140731	6200094		741	0	0.9	0.7
20140731	6200095		731	1	-0.1	0.5
20140731	6200105		741	0	-0.1	0.5
20140731	6200163		697	0	0.1	0.7
20140731	6200191		701	0	-0.1	0.5
20140731	6200192		699	0	0.4	0.5
20140731	6200442		325	0	-0.0	0.5
20140731	6400045		742	0	-0.1	0.5
20140731	6400046		743	0	0.2	0.7
20140731	6600021		734	0	0.3	0.5
20140731	6600022		702	0	0.4	0.7
20140731	6600024		741	0	0.3	0.9

**E-SURFMAR DB Monthly Report  
July 2014**

**Wind direction (deg.), moored buoys, July 2014**

Datend	WMO	Telcom	Recvd	GE	Bias	Std
20140731	1300130		699	1	13	15
20140731	1300131		695	53	10	28
20140731	6100001		743	55	-5	32
20140731	6100002		735	15	-7	19
20140731	6100197		689	27	-9	26
<b>20140731</b>	<b>6100198</b>		<b>258</b>	<b>58</b>	<b>108</b>	<b>73</b>
20140731	6100280		685	37	-5	31
20140731	6100281		683	51	-5	35
20140731	6100417		667	11	-3	22
20140731	6100430		690	38	-14	30
20140731	6101001		212	32	-6	38
20140731	6101003		217	37	-17	42
20140731	6101007		169	14	36	47
20140731	6101008		214	9	6	27
20140731	6200001		741	18	2	20
20140731	6200024		683	24	-5	25
20140731	6200025		662	25	11	26
20140731	6200027		212	7	-3	38
20140731	6200029		501	7	3	19
20140731	6200030		494	14	12	24
20140731	6200081		741	9	-4	16
20140731	6200082		689	75	-53	42
20140731	6200083		686	8	-2	15
20140731	6200084		348	7	-1	17
20140731	6200085		699	42	-4	25
20140718	6200086		38	0	-11	12
<b>20140727</b>	<b>6200087</b>		<b>177</b>	<b>58</b>	<b>107</b>	<b>47</b>
20140731	6200091		133	15	36	53
20140731	6200092		739	3	7	15
20140731	6200093		739	5	5	19
20140731	6200095		705	17	-4	18
20140731	6200105		738	1	2	17
20140731	6200163		717	4	-6	15
20140731	6200191		699	15	-3	17
20140731	6200192		694	14	2	17
20140731	6200442		324	6	1	18
20140731	6400045		742	5	1	17
20140731	6400046		742	5	8	18
20140731	6600021		735	9	-0	17
20140731	6600022		703	17	-10	21
20140731	6600024		734	11	-4	20

**Wind speed rate, moored buoys, July 2014**

Datend	WMO	Telcom	Recvd	GE	Rate	Err
20140731	1300130		699	0	1.0	1.0
20140731	1300131		695	0	0.8	3.0
20140731	6100001		743	2	1.6	2.1
20140731	6100002		735	0	1.0	1.5
20140731	6100197		689	0	1.3	1.6
<b>20140731</b>	<b>6100198</b>		<b>258</b>	<b>57</b>	<b>0.7</b>	<b>2.8</b>
20140731	6100280		685	0	1.2	1.8
20140731	6100281		683	0	1.6	2.2
20140731	6100417		667	0	1.0	1.2
20140731	6100430		690	0	1.3	1.3
20140731	6101001		212	0	1.6	2.2
20140731	6101003		217	0	0.9	1.7
<b>20140731</b>	<b>6101007</b>		<b>169</b>	<b>2</b>	<b>0.0</b>	<b>0.0</b>
20140731	6101008		214	0	0.8	1.8
20140731	6200001		741	0	1.1	1.0
20140731	6200024		683	0	1.0	1.3
20140731	6200025		662	0	0.8	2.0
20140731	6200027		212	0	1.1	1.2
20140731	6200029		501	0	1.1	0.9
20140731	6200030		494	0	0.9	1.6
20140731	6200081		741	0	1.1	0.9
20140731	6200082		689	8	0.9	1.3
20140731	6200083		686	0	0.8	1.4
20140731	6200084		348	0	0.9	1.4

## E-SURFMAR DB Monthly Report July 2014

20140731	6200085	699	0	1.2	1.5
20140718	6200086	38	0	1.0	1.2
<b>20140727</b>	<b>6200087</b>	<b>177</b>	<b>0</b>	<b>0.0</b>	<b>0.0</b>
20140731	6200091	133	14	1.2	1.9
20140731	6200092	739	0	1.0	1.0
20140731	6200093	739	0	1.0	1.1
20140731	6200095	699	0	1.0	1.0
20140731	6200105	738	0	1.1	1.2
20140731	6200163	717	0	1.1	0.9
20140731	6200191	699	0	1.0	1.3
20140731	6200192	694	0	1.4	2.5
20140731	6200442	324	0	1.1	0.9
20140731	6400045	742	1	1.1	1.1
20140731	6400046	742	0	1.0	1.3
20140731	6600021	735	1	1.1	1.3
20140731	6600022	703	1	1.3	1.5
20140731	6600024	734	0	1.1	1.4

### Comments on QC statistics :

#### Air pressure

1. DBI buoy WMO **4400850** and Metocean buoy **4400869** reported wrong pressure values onto the GTS before the transmission of this parameter was stopped. Buoy 4400850 was rehabilitated on the 3<sup>rd</sup> of July. It reported correct pressure data during about three weeks.
2. Metocean buoy WMO **6300642** temporarily reported wrong pressure data onto the GTS in July but not enough for having the transmission stopped for this parameter.
3. Systematic biases of about 1.2 hPa in absolute values have been seen on Italian moored buoys WMO **6100210** and **6100213**. Pressure values reported by Greek buoy WMO **6101003** seem also systematically biased for about 1.2 hPa.

#### Air temperature

4. Air temperature measurements, carried out by Greek Poseidon buoy WMO **6101007**, seem systematically biased for 2.0 °C.

#### Wind

5. Wind direction data were correct on Spanish moored buoy WMO **6100198** after mid-July. Earlier, they were at opposite of what they should have been. It must be noticed that wind directions are not systematically sent onto the GTS for this buoy: many reports are missing.
6. Greek moored buoy WMO **6101007** continue to report abnormal calm winds onto the GTS.
7. Wind data measurements failed on German moored buoy NSB III (WMO **6200087**) less than 24 hours after its re-installation. Dubious data remained onto the GTS till the 8<sup>th</sup> of July.

Monthly QC statistics and other data quality control tools are available on line at :  
<http://www.meteo.shom.fr/qctools/>

The working area of the E-SURFMAR website is open at <http://esurfmar.meteo.fr/wikisurf-wa/> . Ask the E-SURFMAR Programme Manager [Pierre.Blouch@meteo.fr](mailto:Pierre.Blouch@meteo.fr) for the password in case you forgot it. Graphs of system performances may be displayed/downloaded at [http://esurfmar.meteo.fr/doc/r/surfmar/others/e-surfmar\\_monitoring.pdf](http://esurfmar.meteo.fr/doc/r/surfmar/others/e-surfmar_monitoring.pdf).