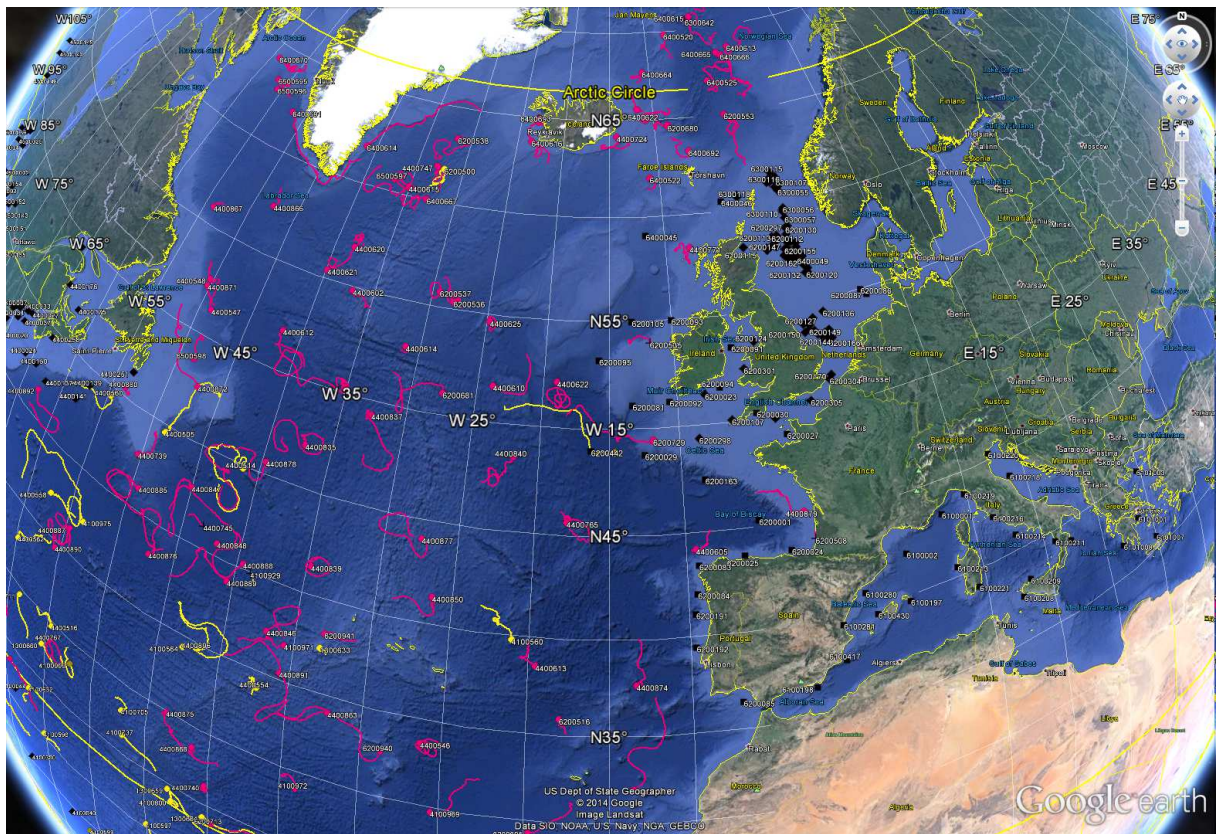


DATA BUOY MONTHLY REPORT

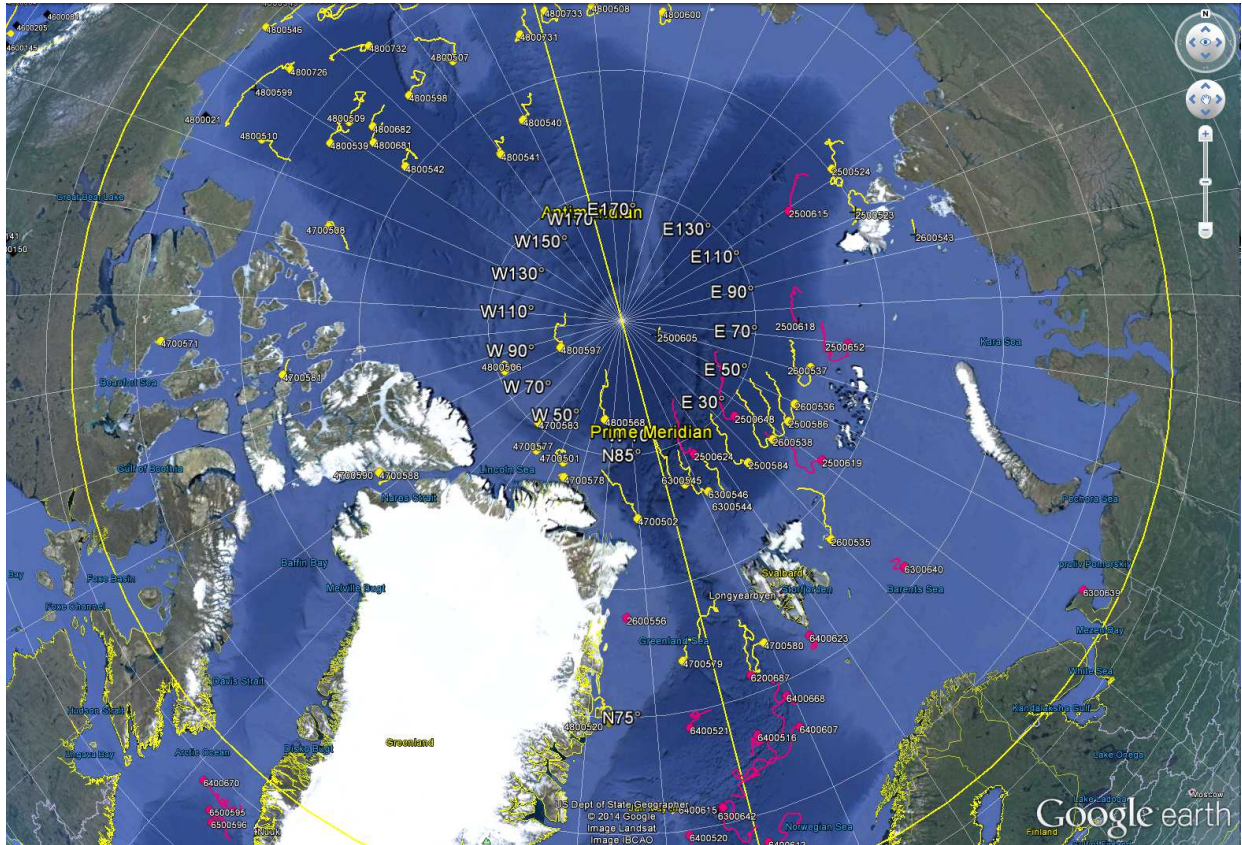
August 2014



*August 2014 : Operating data buoys in the North Atlantic
Drifting buoy trajectories : E-SURFMAR (red), others (yellow)
Moored buoy positions (black)*

*Most recent trajectories may be seen at:
http://www.meteo.shom.fr/cartographie/data/kml/MeteoFrance_buoys_map_15.kmz*

**E-SURFMAR DB Monthly Report
August 2014**



*August 2014
Drifting buoy trajectories in Arctic Ocean and adjacent seas : E-SURFMAR (red), others (yellow)*

DRIFTING BUOYS

Network status

By the end of August, **105 Drifting buoys**, reporting air pressure onto the GTS, were in operation in the frame of E-SURFMAR. Out of these, 71 were E-SURFMAR funded Iridium SVP-Bs, including 7 in the Arctic and 9 HRSST-2 buoys. The remaining buoys were: 34 Iridium drifters owned by NOAA and upgraded with barometers by E-SURFMAR.

Information about the availability of buoys for future deployments may be get from the E-SURFMAR wikisite (working area) at: http://esurfmar.meteo.fr/wikisurf-wa/index.php/Availability_of_drifting_buoys

Besides E-SURFMAR buoys, 56 drifting buoys were reporting at least air pressure observations from the EUMETNET area of interest. Out of these, 4 were reporting Sea Surface Salinity, some in the frame of Spurs/Strasse campaign (validation of SMOS and Aquarius remote SSS measurements).

Drifting buoys - New deployments

WMO	Telcom	Typ	Ow	Dep_Date	DepLat	DepLon	From	Comment
2500616	61762070	MSB	EU	20140805	73.9	168.5	Helsingborg	Oden
4400547	60173710	MSB	EU	20140811	51.3	-48.7	Halifax	HMSC Kingston
4400548	11799230	MSB	E2	20140811	52.7	-50.2	Halifax	HMSC Kingston
6400522	61511870	MSB	EU	20140823	61.9	-11.0	Rotterdam	Bruarfoss
	60893150	MSB	EU	20140828	63.1	-17.0	Rotterdam	Bruarfoss (failed at deployment)

Operating drifting buoys in North Atlantic by the end of the month

WMO	Telcom	Typ	Ow	nobs	Wi	AT	AP	dP	ST	Wa	Ws	Dr	Sb	U	SS	O	Start_end	Lat	Lon	Age
2500615	61660360	MSB	EU	712	-	-	X	X	X	-	-	X	-	-	-	T	0108-3108	82.34	109.20	47
2500616	61762070	MSB	EU	584	-	-	X	X	X	-	-	X	-	-	-	T	0608-3108	73.87	168.55	26
2500619	60276270	MSB	EU	691	-	-	X	X	X	-	-	X	-	-	-	T	0108-3108	80.95	39.98	368
2500624	60247420	MSB	EU	712	-	-	X	X	X	-	-	X	-	-	-	T	0108-3108	84.40	13.47	366
2500648	60370080	MSB	EU	364	-	-	X	X	X	-	-	X	-	-	-	T	0108-3108	84.52	34.89	361
2500652	60176700	MSB	EU	712	-	-	X	X	X	-	-	X	-	-	-	T	0108-3108	81.44	69.92	359
2600556	11549080	MSB	EU	712	-	-	X	X	-	-	-	X	-	-	-	T	0108-3108	78.93	-14.04	708
4100969	60213780	PSB	UP	714	-	-	X	X	X	-	-	X	-	-	-	T	0108-3108	29.81	-25.43	389
4100970	60213790	PSB	UP	652	-	-	X	X	X	-	-	X	-	-	-	T	0108-3108	27.96	-60.40	388
4100971	60215900	PSB	UP	706	-	-	X	X	X	-	-	X	-	-	-	T	0108-3108	36.98	-35.59	388
4100972	60217780	PSB	UP	687	-	-	X	X	X	-	-	X	-	-	-	T	0108-3108	28.99	-33.87	388
4400546	11160640	MSB	EU	712	-	-	X	X	X	-	-	X	-	-	-	T	0108-3108	33.72	-26.23	530
4400547	60173710	MSB	EU	421	-	-	X	X	X	-	-	X	-	-	-	T	1308-3108	51.34	-48.73	21
4400548	11799230	MSB	E2	421	-	-	X	X	X	-	-	X	-	-	-	T	1308-3108	52.68	-50.23	21
4400602	11468700	MSB	UP	712	-	-	X	X	X	-	-	X	-	-	-	T	0108-3108	54.83	-36.86	528
4400605	11473110	MSB	EU	712	-	-	X	X	X	-	-	X	-	-	-	T	0108-3108	44.24	-9.37	478
4400610	61517860	MSB	EU	713	-	-	X	X	X	-	-	X	-	-	-	T	0108-3108	51.70	-23.78	265
4400612	61511880	MSB	EU	715	-	-	X	X	X	-	-	X	-	-	-	T	0108-3108	51.93	-41.66	253
4400613	11475040	MSB	EU	703	-	-	X	X	X	-	-	X	-	-	-	T	0108-3108	38.61	-19.52	544
4400614	61661340	MSB	EU	714	-	-	X	X	X	-	-	X	-	-	-	T	0108-3108	52.85	-31.12	124
4400615	61666340	MSB	EU	716	-	-	X	X	X	-	-	X	-	-	-	T	0108-3108	60.41	-35.00	123
4400620	61667370	MSB	EU	715	-	-	X	X	X	-	-	X	-	-	-	T	0108-3108	56.87	-38.07	123
4400621	61519840	MSB	EU	713	-	-	X	X	X	-	-	X	-	-	-	T	0108-3108	55.42	-39.78	204
4400622	61668320	MSB	EU	715	-	-	X	X	X	-	-	X	-	-	-	T	0108-3108	52.12	-18.96	122
4400624	11341110	YSB	EU	698	-	-	X	X	X	-	-	X	-	-	-	T	0108-3108	32.09	-13.61	629
4400625	61668340	MSB	EU	712	-	-	X	X	X	-	-	X	-	-	-	T	0108-3108	54.67	-24.72	122
4400725	11027170	MSB	EU	712	-	-	X	X	X	-	-	X	-	-	-	T	0108-3108	23.68	-59.30	800
4400739	61516840	MSB	EU	716	-	-	X	X	X	-	-	X	-	-	-	T	0108-3108	42.84	-50.20	90
4400740	11883820	PSB	UP	709	-	-	X	X	X	-	-	X	-	-	-	T	0108-3108	26.46	-40.19	785
4400747	61610060	MSB	EU	569	-	-	X	X	X	-	-	X	-	-	-	T	0108-3108	61.76	-32.79	250

E-SURFMAR DB Monthly Report August 2014

4400765	11685410	MSB	EU	716	-	-	X	X	X	-	-	X	-	-	-	T	0108-3108	45.64	-17.86	521
4400767	11919510	MSB	EU	712	-	-	X	X	X	-	-	X	-	-	-	T	0108-3108	28.84	-54.35	948
4400771	60507000	MSB	E2	692	-	-	X	X	X	-	-	X	-	-	-	T	0108-3108	58.37	-7.84	556
4400773	60211790	PSB	UP	606	-	-	X	X	X	-	-	X	-	-	-	T	0108-3108	25.75	-27.44	414
4400835	60218770	PSB	UP	719	-	-	X	X	X	-	-	X	-	-	-	T	0108-3108	47.07	-37.00	181
4400836	60218680	PSB	UP	717	-	-	X	X	X	-	-	X	-	-	-	T	0108-3108	50.28	-35.17	181
4400837	60209490	PSB	UP	719	-	-	X	X	X	-	-	X	-	-	-	T	0108-3108	49.36	-32.58	181
4400839	60205090	PSB	UP	718	-	-	X	X	X	-	-	X	-	-	-	T	0108-3108	41.43	-34.63	181
4400840	60208710	PSB	UP	718	-	-	X	X	X	-	-	X	-	-	-	T	0108-3108	48.54	-21.77	180
4400846	60441290	DSB	UP	713	-	-	X	X	X	-	-	X	-	-	-	T	0108-3108	37.38	-36.93	218
4400847	60442280	DSB	UP	713	-	-	X	X	X	-	-	X	-	-	-	T	0108-3108	42.81	-44.85	218
4400848	60448280	DSB	UP	711	-	-	X	X	X	-	-	X	-	-	-	T	0108-3108	40.72	-41.74	217
4400850	60648340	DSB	UP	714	-	-	X	X	X	-	-	X	-	-	-	T	0108-3108	41.39	-26.28	218
4400863	60211690	PSB	UP	716	-	-	X	X	X	-	-	X	-	-	-	T	0108-3108	34.12	-32.16	412
4400866	11793240	MSB	E2	712	-	-	X	X	X	-	-	X	-	-	-	T	0108-3108	57.35	-47.66	72
4400867	11593590	MSB	EU	712	-	-	X	X	X	-	-	X	-	-	-	T	0108-3108	55.89	-53.81	70
4400868	11794230	MSB	E2	713	-	-	X	X	X	-	-	X	-	-	-	T	0108-3108	28.68	-41.22	481
4400871	11790240	MSB	E2	712	-	-	X	X	X	-	-	X	-	-	-	T	0108-3108	52.33	-50.17	66
4400872	60202920	MSB	EU	712	-	-	X	X	X	-	-	X	-	-	-	T	0108-3108	47.59	-47.12	66
4400874	60213460	PSB	UP	619	-	-	X	X	X	-	-	X	-	-	-	T	0108-3108	37.73	-13.38	412
4400876	60648350	DSB	UP	713	-	-	X	X	X	-	-	X	-	-	-	T	0108-3108	38.30	-46.90	218
4400877	60526170	PSB	UP	718	-	-	X	X	X	-	-	X	-	-	-	T	0108-3108	44.10	-27.42	209
4400878	60528170	PSB	UP	718	-	-	X	X	X	-	-	X	-	-	-	T	0108-3108	45.62	-39.63	209
4400879	60554620	PSB	UP	719	-	-	X	X	X	-	-	X	-	-	-	T	0108-3108	45.34	-1.89	208
4400880	60656880	PSB	UP	717	-	-	X	X	X	-	-	X	-	-	-	T	0108-3108	45.47	-53.57	210
4400885	60218780	PSB	UP	719	-	-	X	X	X	-	-	X	-	-	-	T	0108-3108	41.24	-49.22	94
4400887	60251440	PSB	UP	717	-	-	X	X	X	-	-	X	-	-	-	T	0108-3108	36.52	-54.40	96
4400888	60359010	PSB	UP	718	-	-	X	X	X	-	-	X	-	-	-	T	0108-3108	40.31	-39.48	94
4400889	60202320	PSB	UP	718	-	-	X	X	X	-	-	X	-	-	-	T	0108-3108	39.07	-40.39	95
4400890	12000230	PSB	UP	645	-	-	X	X	X	-	-	X	-	-	-	T	0108-3108	34.72	-55.41	94
4400891	12007220	PSB	UP	703	-	-	X	X	X	-	-	X	-	-	-	T	0108-3108	35.42	-35.65	92
4400892	60018400	PSB	UP	649	-	-	X	X	X	-	-	X	-	-	-	T	0108-3108	41.54	-62.48	93
6200514	60203700	MSB	E2	710	-	-	X	X	X	-	-	X	-	-	-	T	0108-3108	65.59	-11.87	556
6200516	11475100	MSB	EU	712	-	-	X	X	X	-	-	X	-	-	-	T	0108-3108	35.92	-18.01	482
6200536	11599570	MSB	EU	712	-	-	X	X	X	-	-	X	-	-	-	T	0108-3108	55.34	-28.01	84
6200537	11791240	MSB	E2	711	-	-	X	X	X	-	-	X	-	-	-	T	0108-3108	55.72	-29.34	84
6200538	11460700	MSB	UP	712	-	-	X	X	X	-	-	X	-	-	-	T	0108-3108	63.35	-31.56	83
6200553	11165650	MSB	EU	712	-	-	X	X	X	-	-	X	-	-	-	T	0108-3108	64.95	-1.85	526
6200680	11166640	MSB	EU	712	-	-	X	X	X	-	-	X	-	-	-	T	0108-3108	64.60	-8.52	653
6200681	11168640	MSB	EU	712	-	-	X	X	X	-	-	X	-	-	-	T	0108-3108	51.04	-27.52	654
6200687	11349100	YSB	EU	706	-	-	X	X	X	-	-	X	-	-	-	T	0108-3108	75.78	5.29	633
6200695	60408990	MSB	E2	707	-	-	X	X	X	-	-	X	-	-	-	T	0108-3108	29.37	-19.71	482
6200713	11246980	YSB	EU	697	-	-	X	X	X	-	-	X	-	-	-	T	0108-3108	23.87	-39.65	628
6200714	11240980	YSB	EU	699	-	-	X	X	X	-	-	X	-	-	-	T	0108-3108	23.77	-34.22	625
6200729	60207600	PSB	UP	718	-	-	X	X	X	-	-	X	-	-	-	T	0108-3108	49.45	-11.90	179
6200940	60203850	PSB	UP	687	-	-	X	X	X	-	-	X	-	-	-	T	0108-3108	32.79	-28.65	91
6200941	61516840	PSB	UP	719	-	-	X	X	X	-	-	X	-	-	-	T	0108-3108	38.29	-32.99	91
6300640	60172710	MSB	EU	712	-	-	X	X	X	-	-	X	-	-	-	T	0108-3108	75.75	34.70	383
6400516	11473100	MSB	EU	712	-	-	X	X	X	-	-	X	-	-	-	T	0108-3108	73.38	3.47	691
6400520	11479040	MSB	EU	709	-	-	X	X	X	-	-	X	-	-	-	T	0108-3108	69.80	-7.30	478
6400521	11470030	MSB	EU	712	-	-	X	X	X	-	-	X	-	-	-	T	0108-3108	74.36	-5.31	476
6400522	61511870	MSB	EU	112	-	-	X	X	X	-	-	X	-	-	-	T	2608-3108	61.94	-10.97	9
6400525	60175710	MSB	EU	712	-	-	X	X	X	-	-	X	-	-	-	T	0108-3108	66.91	-2.80	380
6400607	11479100	MSB	EU	712	-	-	X	X	X	-	-	X	-	-	-	T	0108-3108	73.04	9.07	662
6400613	60174710	MSB	EU	712	-	-	X	X	X	-	-	X	-	-	-	T	0108-3108	68.70	1.10	365
6400614	60178700	MSB	EU	712	-	-	X	X	X	-	-	X	-	-	-	T	0108-3108	61.87	-41.16	361
6400615	60173700	MSB	EU	712	-	-	X	X	X	-	-	X	-	-	-	T	0108-3108	70.77	-3.01	296
6400616	60178710	MSB	EU	712	-	-	X	X	X	-	-	X	-	-	-	T	0108-3108	63.72	-23.50	295
6400622	60172810	MSB	EU	712	-	-	X	X	X	-	-	X	-	-	-	T	0108-3108	64.99	-10.96	381
6400623	11470040	MSB	EU	712	-	-	X	X	X	-	-	X	-	-	-	T	0108-3108	76.17	16.22	477
6300639	11471050	MSB	EU	712	-	-	X	X	X	-	-	X	-	-	-	T	0108-3108	68.35	46.20	526
6400664	60176710	MSB	EU	712	-	-	X	X	X	-	-	X	-	-	-	T	0108-3108	67.64	-10.88	279
6400665	60171710	MSB	EU	712	-	-	X	X	X	-	-	X	-	-	-	T	0108-3108	68.44	-0.63	277
6400666	60179710	MSB	EU	712	-	-	X	X	X	-	-	X	-	-	-	T	0108-3108	68.25	-0.15	277
6400667	61615060	MSB	EU	711	-	-	X	X	X	-	-	X	-	-	-	T	0108-3108	60.02	-32.83	249
6400668	60177860	MSB	EU	712	-	-	X	X	X	-	-	X	-	-	-	T	0108-3108	74.45	9.09	253
6400669	60177710	MSB	EU	712	-	-	X	X	X	-	-	X	-	-	-	T	0108-3108	65.00	-23.09	249
6400670	61513850	MSB	EU	686	-	-	X	X	X	-	-	X	-	-	-	T	0108-3108	64.21	-58.61	206
6400691	61514870	MSB	EU	715	-	-	X	X	X	-	-	X	-	-	-	T	0108-3108	62.08	-51.78	205
6400692	60172720	MSB	EU	712	-	-	X	X	X	-	-	X	-	-	-	T	0108-3108	63.22	-6.60	192
6400693	60173720	MSB	EU	712	-	-	X	X	X	-	-	X	-	-	-	T	0108-3108	64.79	-23.11	186
6500595	11595570	MSB	EU	712	-	-	X	X	X	-	-	X	-	-	-	T	0108-3108	63.22	-56.44	76
6500596	61511850	MSB	EU	714	-	-	X	X	X	-	-	X	-	-	-	T	0108-3108	62.76	-55.62	74
6500597	11595650	MSB	EU	709	-	-	X	X	X	-	-	X	-	-	-	T	0108-3108	60.64	-36.79	80
6500598	11792240	MSB	E2	712	-	-	X	X	X	-	-	X	-	-	-	T	0108-3108	48.75	-48.45	68

**E-SURFMAR DB Monthly Report
August 2014**

Drifting buoys which ceased to be operational

WMO	Telcom	Typ	Ow	End_Date	Lat	Lon	Age	Cause
2500618	60244420	MSB	EU	20140811	83.4	74.8	349	AP failed then trans. stopped 9 days later
4400724	13300270	MSB	EU	20140821	64.1	-14.2	799	AP measurements failed
4400745	60899120	MSB	EU	20140810	41.2	-43.1	243	Unknown
4400875	11021610	MSB	EU	20140805	30.0	-43.4	898	AP measurements failed
6200508	10759040	DSB	UP	20140814	44.0	-1.4	471	Ashore in France (Landes)
6200535	61660330	MSB	EU	20140813	54.0	-11.8	69	Unknown
6300642	11548080	MSB	EU	20140815	70.5	-3.7	789	Faded (battery empty)

Non-operating drifting buoys reporting GTS data

WMO	Telcom	Typ	Ow	nobs	Wi	AT	AP	dP	ST	Wa	Ws	Dr	Sb	U	SS	O	Start_end	Lat	Lon	Age
4400724	13300270	MSB	EU	712	-	-	S	S	X	-	-	X	-	-	-	T	0108-3108	64.12	-14.23	799
4400875	11021610	MSB	EU	712	-	-	S	S	X	-	-	X	-	-	-	T	0108-3108	30.01	-43.37	898

Non-operating drifting buoys which ceased to emit

WMO	Telcom	Typ	Ow	End_Date	Lat	Lon	Age	Cause
4400869	11026040	MSB	EU	20140809	26.9	-41.4	892	Faded (battery empty)

Other operating drifting buoys inside the EUMETNET by the end of the month

WMO	Telcom	Typ	Ow	nobs	Wi	AT	AP	dP	ST	Wa	Ws	Dr	Sb	U	SS	O	Start_end	Lat	Lon
1300633	109491	AOML		705	-	-	X	X	X	-	-	X	-	-	-	L	0108-3108	37.48	-33.17
1300659	11910180	UKMO		712	-	-	X	X	X	-	-	X	-	-	-	T	0108-3108	24.72	-42.98
1300660	11022040	UKMO		712	-	-	X	X	X	-	-	X	-	-	-	T	0108-3108	27.97	-55.27
1300662	11098800	UKMO		712	-	-	X	X	X	-	-	X	-	-	-	T	0108-3108	23.20	-34.84
1300664	11090810	UKMO		712	-	-	X	X	X	-	-	X	-	-	-	T	0108-3108	24.05	-40.31
1300667	60898000	UKMO		712	-	-	X	X	X	-	-	X	-	-	-	T	0108-3108	14.53	-17.96
1300668	60897010	UKMO		712	-	-	X	X	X	-	-	X	-	-	-	T	0108-3108	3.28	3.09
1500549	60794980	UKMO		712	-	-	X	X	X	-	-	X	-	-	-	T	0108-3108	2.37	-25.61
2500584	2500584	PSC		702	-	-	X	X	X	-	-	X	-	-	-	T	0108-3108	82.95	26.86
2600535	971540	PSC		720	-	-	X	X	X	-	-	-	-	-	-	O	0108-3108	78.66	29.17
2600538	61369400	PSC		546	-	-	X	X	X	-	-	-	-	-	-	O	0808-3108	82.87	37.09
3100862	61213570	LOCE		1429	-	-	X	X	X	-	-	X	-	-	X	T	0108-3108	5.20	-19.18
4100560	114550	AOML		718	-	-	X	-	-	-	-	X	-	-	-	L	0108-3108	39.84	-21.05
4100562	114558	AOML		718	-	-	X	-	X	-	-	X	-	-	-	L	0108-3108	35.23	-68.88
4100564	109221	AOML		706	-	-	X	-	X	-	-	X	-	-	-	L	0108-3108	34.44	-42.77
4100596	11473050	EUME		712	-	-	X	X	X	-	-	X	-	-	-	T	0108-3108	20.66	-54.99
4100597	61512840	AOML		714	-	-	X	X	X	-	-	X	-	-	-	T	0108-3108	20.52	-44.90
4100598	61610040	AOML		715	-	-	X	X	X	-	-	X	-	-	-	T	0108-3108	20.28	-41.84
4100599	61615070	AOML		715	-	-	X	X	X	-	-	X	-	-	-	T	0108-3108	14.27	-51.15
4100600	61618040	AOML		714	-	-	X	X	X	-	-	X	-	-	-	T	0108-3108	12.90	-50.42
4100612	123247	AOML		230	-	-	X	X	X	-	-	X	-	-	-	L	2108-3108	32.76	-68.83
4100632	11474050	EUME		712	-	-	X	X	X	-	-	X	-	-	-	T	0108-3108	23.21	-56.76
4100705	11596570	AOML		712	-	-	X	X	X	-	-	X	-	-	-	T	0108-3108	28.20	-47.05
4100706	11595580	AOML		694	-	-	X	X	X	-	-	X	-	-	-	T	0108-3108	24.95	-67.97
4100707	11590580	AOML		712	-	-	X	X	X	-	-	X	-	-	-	T	0108-3108	19.45	-61.48
4100708	11585510	AOML		712	-	-	X	X	X	-	-	X	-	-	-	T	0108-3108	22.24	-67.64
4100709	11598570	AOML		712	-	-	X	X	X	-	-	X	-	-	-	T	0108-3108	28.84	-62.77
4100711	11477030	EUME		712	-	-	X	X	X	-	-	X	-	-	-	T	0108-3108	29.54	-58.45
4100737	60342390	CMM		614	-	-	X	X	X	-	-	X	-	-	X	T	0108-3108	26.49	-46.85
4100800	60547830	CMM		622	-	-	X	X	X	-	-	X	-	-	X	T	0108-3108	23.91	-42.72
4100933	101721	AOML		544	-	-	X	X	X	-	-	X	-	-	-	L	0808-3108	33.13	-67.87
4100936	109488	AOML		668	-	-	X	X	X	-	-	X	-	-	-	L	0108-3108	30.34	-66.60
4100975	109439	AOML		703	-	-	X	X	X	-	-	X	-	-	-	L	0108-3108	37.48	-53.26
4100999	114623	AOML		588	-	-	X	X	X	-	-	X	-	-	-	L	0108-3108	28.53	-52.11
4400505	98087	ICEP		1576	-	-	X	X	X	-	-	-	-	-	-	L	0108-3108	44.67	-48.49
4400514	126483	AOML		719	-	-	X	X	X	-	-	X	-	-	-	L	0108-3108	44.88	-41.27
4400516	114599	AOML		586	-	-	X	X	X	-	-	X	-	-	-	L	0108-3108	29.85	-54.38
4400554	126479	AOML		714	-	-	X	X	X	-	-	X	-	-	-	L	0108-3108	34.12	-37.07

**E-SURFMAR DB Monthly Report
August 2014**

MOORED BUOYS

Former EGOS stations (K-pattern and Hydrosphere)

WMO	Name	nobs	Wi	AT	AP	dP	ST	Wa	Ws	Dr	Sb	U	SS	O	Start_end	Lat	Lon
6100001	Cote d'Azur	715	X	X	X	X	X	X	X	-	-	X	-	T	0108-3108	43.40	7.80
6100002	Lion	716	X	X	X	X	X	X	X	-	-	X	-	T	0108-3108	42.10	4.70
6200001	Gascogne	720	X	X	X	X	X	X	-	-	-	X	-	O	0108-3108	45.30	-5.00
6200029	K1	641	X	X	X	-	X	X	-	-	-	X	-	O	0108-3108	48.70	-12.50
6200081	K2	720	X	X	X	X	X	X	-	-	-	X	-	O	0108-3108	51.00	-13.20
6200090	M1	-	-	-	-	-	-	-	-	-	-	-	-	-	-	53.10	-11.20
6200091	M2	708	-	X	X	-	X	X	-	-	-	X	-	O	0108-3108	53.50	-5.40
6200092	M3	718	X	X	X	-	X	X	-	-	-	X	S	O	0108-3108	51.20	-10.50
6200093	M4	719	X	X	X	-	X	X	-	-	-	-	-	O	0108-3108	54.70	-9.10
6200094	M5	719	-	X	X	-	-	-	-	-	-	-	-	O	0108-3108	51.70	-6.70
6200095	M6	719	S	X	X	X	X	X	-	-	-	X	-	O	0108-3108	53.10	-15.90
6200105	K4	719	X	X	X	X	X	X	-	-	-	X	-	O	0108-3108	55.80	-11.40
6200108	K3	-	-	-	-	-	-	-	-	-	-	-	-	-	-	53.50	-19.50
6200163	Brittany	709	X	X	X	X	X	X	-	-	-	X	-	O	0108-3108	47.50	-8.40
6400045	K5	693	X	X	X	X	X	X	-	-	-	X	-	O	0108-3108	59.10	-11.70
6400046	K7	718	X	X	X	-	X	X	-	-	-	X	-	O	0108-3108	60.70	-5.20

Comments:

- EUMETNET moored buoys are presented in bold characters.

Former EGOS moored buoys (Spanish SeaWatch and WaveScan)

WMO	Name	nobs	Wi	AT	AP	dP	ST	Wa	Ws	Dr	Sb	U	SS	O	Start_end	Lat	Lon
1300130	Gran Canaria	298	S	S	S	-	S	S	-	-	-	-	S	-	0108-1308	28.18	-15.82
1300131	Tenerife Sur	689	X	X	X	-	X	X	X	-	-	-	-	O	0108-3108	28.00	-16.58
6100196	C. Begur	-	-	-	-	-	-	-	-	-	-	-	-	-	-	41.92	3.65
6100197	Mahon	720	X	X	X	-	-	X	X	-	-	-	-	O	0108-3108	39.72	4.42
6100198	C. de Gata	720	X	X	X	-	X	X	X	-	-	-	X	O	0108-3108	36.57	-2.33
6100280	Tarragona	718	X	X	X	-	X	X	X	-	-	-	X	O	0108-3108	40.77	1.47
6100281	Valencia	720	X	X	X	-	X	X	X	-	-	-	X	O	0108-3108	39.47	-0.27
6100417	C. de Palos	719	X	X	X	-	X	X	X	-	-	-	X	O	0108-3108	37.65	-0.32
6100430	Dragonera	720	X	X	X	-	X	X	X	-	-	-	-	O	0108-3108	39.56	2.11
6200024	Bilbao-Visc.	719	X	X	X	-	X	X	X	-	-	-	X	O	0108-3108	43.63	-3.03
6200025	C. de Penas	716	X	X	X	-	X	X	X	-	-	-	X	O	0108-3108	43.73	-6.17
6200082	E. de Bares	720	X	X	X	-	X	X	X	-	-	-	X	O	0108-3108	44.13	-7.69
6200083	Villano-Sis.	718	X	X	X	-	X	X	X	-	-	-	X	O	0108-3108	43.48	-9.22
6200084	C. Silleiro	720	X	X	X	-	X	X	X	-	-	-	X	O	0108-3108	42.12	-9.43
6200085	G. de Cadiz	718	X	X	X	-	X	X	X	-	-	-	X	O	0108-3108	36.48	-6.97
6201030	Santander	-	-	-	-	-	-	-	-	-	-	-	-	-	-	43.84	-3.77

Comments:

- The EUMETNET buoy is presented in bold characters.

Operating ISPRA moored buoys (Italy)

WMO	Name	nobs	Wi	AT	AP	dP	ST	Wa	Ws	Dr	Sb	U	SS	O	Start_end	Lat	Lon
6100207		1385	-	-	X	-	X	X	-	-	-	-	-	O	0108-3108	37.44	15.15
6100208		1366	-	-	X	-	X	X	-	-	-	-	-	O	0108-3108	37.52	12.53
6100209		361	-	-	S	-	S	S	-	-	-	-	-	-	0108-0908	38.26	13.33
6100210		1384	-	-	X	-	X	X	-	-	-	-	-	O	0108-3108	39.02	17.22
6100211		1377	-	-	X	-	X	X	-	-	-	-	-	O	0108-3108	39.45	15.92
6100212		-	-	-	-	-	-	-	-	-	-	-	-	-	-	40.62	9.89
6100213		1379	-	-	X	-	X	X	-	-	-	-	-	O	0108-3108	40.55	8.11
6100214		1349	-	-	X	-	X	X	-	-	-	-	-	O	0108-3108	40.87	12.95
6100215		1321	-	-	-	-	X	X	-	-	-	-	-	O	0108-3108	40.98	17.38
6100216		1273	-	-	X	-	X	X	-	-	-	-	-	O	0108-3108	42.24	11.55
6100218		303	-	-	X	-	X	X	-	-	-	-	-	O	0708-3108	43.83	13.72
6100219		1382	-	-	X	-	X	X	-	-	-	-	-	O	0108-3108	43.93	9.83
6100220		1040	-	-	X	-	X	X	-	-	-	-	-	O	0108-3108	45.33	12.52
6100221		1028	-	-	X	-	X	X	-	-	-	-	-	O	0108-3108	39.12	9.40

**E-SURFMAR DB Monthly Report
August 2014**

Operating POSEIDON moored buoys (Greece)

WMO	Name	nobs	Wi	AT	AP	dP	ST	Wa	Ws	Dr	Sb	U	SS	O	Start_end	Lat	Lon
6101000			-	-	-	-	-	-	-	-	-	-	-			39.10	24.50
6101001		230	X	X	X	-	X	X	-	-	-	-	-	O	0108-3108	37.60	23.60
6101002			-	-	-	-	-	-	-	-	-	-	-			37.00	22.10
6101003		203	X	-	X	-	X	X	-	-	-	-	-	O	0108-3108	40.00	24.70
6101004			-	-	-	-	-	-	-	-	-	-	-			39.10	25.80
6101005			-	-	-	-	-	-	-	-	-	-	-			37.50	25.50
6101006			-	-	-	-	-	-	-	-	-	-	-			36.30	25.50
6101007		212	X	X	X	-	X	X	-	-	-	-	-	O	0108-3108	35.80	24.90
6101008		235	X	X	X	-	X	X	-	-	-	-	-	O	0108-3108	36.80	21.60
6101009			-	-	-	-	-	-	-	-	-	-	-			38.00	20.60

Other European moored buoys (operated by 3rd parties)

WMO	Name	nobs	Wi	AT	AP	dP	ST	Wa	Ws	Dr	Sb	U	SS	O	Start_end	Lat	Lon
1200050	Cycofos		-	-	-	-	-	-	-	-	-	-	-			33.60	31.90
6100010	Italia-1		-	-	-	-	-	-	-	-	-	-	-			43.80	9.10
6200027	Jersey	240	X	-	X	X	-	X	-	-	-	-	-	O	0108-3108	49.08	-22.20
6200030	L4	695	X	X	X	-	X	-	-	-	-	X	-	O	0108-3108	50.25	-4.22
6200050	E1		-	-	-	-	-	-	-	-	-	-	-			50.04	-4.37
6200086	NSB II	53	X	X	X	X	X	-	-	-	-	X	-	O	0908-3108	55.00	6.40
6200087	NSB III	213	-	S	S	S	S	-	-	-	-	S	-		0108-0908	54.70	6.80
6200191	Porto	693	X	X	X	-	X	X	-	-	-	-	-	O	0108-3108	41.15	-9.57
6200192	Peniche	688	X	X	X	-	X	X	-	-	-	-	-	O	0108-3108	39.50	-9.65
6200303	Turbo Bank	691	-	-	-	-	X	-	-	-	-	-	-	O	0108-3108	51.60	-5.10
6200442	PAP	718	X	X	X	-	X	X	-	-	-	X	-	O	0108-3108	49.00	-16.40
6600021	Arkona Becken	714	X	X	-	-	X	-	-	-	-	-	-	O	0108-3108	54.90	13.90
6600022	Oder Bank	689	X	X	-	-	X	-	-	-	-	-	-	O	0108-3108	54.10	14.20
6600024	Darsser Schwell	705	X	X	-	-	X	-	-	-	-	-	-	O	0108-3108	54.70	12.70

Other offshore moored buoys inside the EUMETNET area

WMO	Name	nobs	Wi	AT	AP	dP	ST	Wa	Ws	Dr	Sb	U	SS	O	Start_end	Lat	Lon
1300001		524	X	X	X	-	X	-	-	-	-	X	-	L	0108-3108	11.47	-23.00
1300008		361	X	X	X	-	X	-	-	-	-	X	-	L	0708-3108	14.98	-38.00
1300308	East Atlantic		-	-	-	-	-	-	-	-	-	-	-			15.00	-38.00
4100026		306	X	X	-	-	X	-	-	-	-	X	-	L	0708-3108	11.49	-38.40
4100040	West Atlantic	710	X	X	X	X	X	X	-	-	-	X	-	O	0108-3108	14.50	-53.00
4100041	Mid. Atlantic	701	X	X	X	X	X	X	-	-	-	-	-	O	0108-3108	14.50	-46.00
4100043	Porto Rico	709	X	X	X	X	X	X	-	-	-	X	-	O	0108-3108	21.00	-65.00
4100044		714	X	X	X	X	X	X	-	-	-	X	-	O	0108-3108	21.70	-58.70
4100046		717	X	X	X	X	X	X	-	-	-	X	-	O	0108-3108	23.90	-70.90
4100047			-	-	-	-	-	-	-	-	-	-	-			27.50	-71.50
4100048		714	X	X	X	X	X	X	-	-	-	X	-	O	0108-3108	32.00	-69.60
4100049		711	X	X	X	X	X	X	-	-	-	X	-	O	0108-3108	27.50	-53.00
4100139		529	X	X	X	-	X	-	-	-	-	X	-	L	0108-3108	20.02	-37.86
4100300	Antilles		-	-	-	-	-	-	-	-	-	-	-			15.85	-57.47
4200059	Caraibes	715	X	X	X	X	X	X	-	-	-	X	-	O	0108-3108	15.00	-67.50
4400008	A Nantucket		-	-	-	-	-	-	-	-	-	-	-			40.50	-69.40
4400011	D Georges Bk		-	-	-	-	-	-	-	-	-	-	-			41.10	-66.60
4400018	SE Cape Cod		-	-	-	-	-	-	-	-	-	-	-			41.30	-69.30
4400024	NNE Channel	684	X	X	X	-	X	X	-	-	-	-	-	O	0108-3108	42.30	-65.90
4400137	E Scotia Sl.	718	X	X	X	X	X	X	-	-	-	-	-	O	0108-3108	42.30	-62.00
4400138	SW Gd Banks		-	-	-	-	-	-	-	-	-	-	-			44.30	-53.60
4400139	Beanquereau	660	X	X	X	X	X	X	-	-	-	-	-	O	0108-3108	44.30	-57.10
4400140	Tail of Bk		-	-	-	-	-	-	-	-	-	-	-			43.80	-51.70
4400141	Larentian F	713	X	X	X	X	X	X	-	-	-	-	-	O	0108-3108	43.00	-58.00
4400150	La Have Bk	716	X	X	X	X	X	X	-	-	-	-	-	O	0108-3108	42.50	-64.00

E-SURFMAR DB Monthly Report August 2014

Buoy-QC statistics from Meteo-France model outputs

Datend : Date of the last value received on GTS
Recvd : Total number of values received on GTS
GE : Number of Gross Errors (excluded from bias and sd computations)
bias : Mean differences between observation values and co-located model output values
Std : Standard deviation of differences

Air Pressure (hPa), drifting buoys, August 2014

Datend	WMO	Telcom	Recvd	GE	Bias	Std
20140831	2500615	61660360	712	0	-0.2	0.5
20140831	2500616	61762070	584	0	-0.1	0.4
20140811	2500618	60244420	249	20	-1.2	4.2
20140831	2500619	60276270	712	0	-0.2	0.3
20140831	2500624	60247420	712	0	0.2	0.3
20140831	2500648	60370080	712	0	-0.1	0.4
20140831	2500652	60176700	712	0	-0.2	0.4
20140831	2600556	11549080	712	0	-0.1	0.4
20140831	4100969	60213780	714	0	-0.2	0.3
20140831	4100970	60213790	652	0	0.3	0.5
20140831	4100971	60215900	706	0	0.1	0.3
20140831	4100972	60217780	687	0	0.2	0.3
20140831	4400546	11160640	712	0	-0.1	0.3
20140831	4400547	60173710	421	0	0.4	0.4
20140831	4400548	11799230	421	0	0.3	0.4
20140831	4400602	11468700	712	0	-0.1	0.4
20140831	4400605	11473110	712	0	-0.2	0.4
20140831	4400610	61517860	713	0	0.3	0.4
20140831	4400612	61511880	715	0	-0.1	0.5
20140831	4400613	11475040	703	0	-0.3	0.3
20140831	4400614	61661340	714	0	0.8	0.6
20140831	4400615	61666340	716	0	-0.5	0.4
20140831	4400620	61667370	715	0	0.3	0.4
20140831	4400621	61519840	713	0	0.4	0.4
20140831	4400622	61668320	715	0	0.3	0.5
20140831	4400624	11341110	698	0	0.2	0.4
20140831	4400625	61668340	712	0	0.3	0.4
20140821	4400724	13300270	486	4	-1.3	1.8
20140831	4400725	11027170	712	0	0.3	0.6
20140831	4400739	61516840	716	1	0.2	0.7
20140831	4400740	11883820	709	0	-0.0	0.3
20140810	4400745	60899120	232	0	-0.1	0.3
20140831	4400747	61610060	569	0	-0.1	0.6
20140831	4400765	11685410	716	0	0.2	0.4
20140831	4400767	11919510	712	0	0.0	0.5
20140831	4400771	60507000	692	0	0.0	0.3
20140831	4400773	60211790	606	0	0.3	0.3
20140831	4400835	60218770	719	0	-0.4	0.4
20140831	4400836	60218680	717	0	-0.0	0.6
20140831	4400837	60209590	719	0	-0.2	0.5
20140831	4400839	60205090	718	0	-0.1	0.4
20140831	4400840	60208710	718	0	0.1	0.4
20140831	4400846	60441290	713	0	0.4	0.4
20140831	4400847	60442280	713	0	0.1	0.4
20140831	4400848	60448280	711	0	-0.1	0.4
20140831	4400850	60648340	278	2	1.0	1.2
20140831	4400876	60648350	712	0	0.4	0.5
20140831	4400863	60211690	716	0	0.2	0.3
20140831	4400866	11793240	712	0	-0.2	0.3
20140831	4400867	11593590	712	0	-0.1	0.4
20140831	4400868	11794230	713	0	0.2	0.4
20140831	4400871	11790240	712	0	-0.0	0.4
20140831	4400872	60202920	712	0	-0.4	0.3
20140831	4400874	60213460	619	0	0.3	0.3
20140805	4400875	11021610	107	6	-7.7	2.2
20140831	4400876	60648350	712	0	0.4	0.5
20140831	4400877	60526170	718	0	-0.2	0.4
20140831	4400878	60528170	718	0	-0.2	0.4
20140831	4400879	60554620	719	0	-0.0	0.4
20140831	4400880	60556880	717	0	-0.3	0.4
20140831	4400885	60218780	719	0	-0.4	0.6
20140831	4400887	60251440	717	0	-0.1	0.5
20140831	4400888	60359010	718	0	-0.2	0.3

E-SURFMAR DB Monthly Report August 2014

20140831	4400889	60202320	718	0	-0.1	0.4
20140831	4400890	12000230	645	0	-0.1	0.5
20140831	4400891	12007220	703	0	0.0	0.3
20140831	4400892	60018400	649	0	-0.1	0.5
20140814	6200508	10759040	314	0	0.5	0.6
20140831	6200514	60203700	710	0	0.0	0.3
20140831	6200516	11475100	712	0	0.3	0.3
20140813	6200535	61660330	294	0	-0.0	0.3
20140831	6200536	11599570	712	0	-0.2	0.5
20140831	6200537	11791240	711	0	-0.2	0.6
20140831	6200538	11460700	712	0	-0.1	0.4
20140831	6200553	11165650	712	0	0.1	0.4
20140831	6200680	11166640	712	0	-0.2	0.3
20140831	6200681	11168640	712	0	-0.4	0.4
20140831	6200687	11349100	706	0	0.0	0.2
20140831	6200695	60408990	707	0	0.4	0.3
20140831	6200713	11246980	697	0	0.0	0.3
20140831	6200714	11240980	699	0	0.0	0.3
20140831	6200729	60207600	718	0	-0.1	0.5
20140831	6200940	60203850	687	0	0.2	0.3
20140831	6200941	60207590	719	0	-0.0	0.3
20140831	6300639	11471050	712	0	-0.4	0.4
20140831	6300640	60172710	712	0	0.1	0.3
20140815	6300642	11548080	351	0	0.2	0.3
20140831	6400516	11473100	712	0	-0.2	0.2
20140831	6400520	11479040	709	0	-0.2	0.3
20140831	6400521	11470030	712	0	-0.0	0.3
20140831	6400522	61511870	112	0	-0.0	0.6
20140831	6400525	60175710	712	0	0.1	0.3
20140831	6400607	11479100	712	0	-0.0	0.2
20140831	6400613	60174710	712	0	0.1	0.3
20140831	6400614	60178700	712	0	0.0	0.4
20140831	6400615	60173700	712	0	0.4	0.3
20140831	6400616	60178710	712	0	0.2	0.4
20140831	6400622	60172810	712	0	0.1	0.4
20140831	6400623	11470040	712	0	-0.0	0.4
20140831	6400664	60176710	712	0	0.0	0.3
20140831	6400665	60171710	712	0	0.3	0.3
20140831	6400666	60179710	712	0	0.3	0.3
20140831	6400667	61615060	711	0	0.2	0.5
20140831	6400668	60177860	712	0	0.3	0.2
20140831	6400669	60177710	712	0	0.1	0.6
20140831	6400670	61513850	686	0	0.4	0.4
20140831	6400691	61514870	715	0	0.4	0.4
20140831	6400692	60172720	712	0	0.3	0.4
20140831	6400693	60173720	712	0	0.2	0.4
20140831	6500595	11595570	712	0	-0.5	0.3
20140831	6500596	61511850	714	0	0.7	0.5
20140831	6500597	11595650	709	0	-0.3	0.3
20140831	6500598	11792240	712	0	-0.0	0.3

Air Pressure (hPa), moored buoys, August 2014

Datend	WMO	Telcom	Recvd	GE	Bias	Std
20140813	1300130		298	0	0.8	0.5
20140831	1300131		689	0	0.3	0.6
20140831	6100001		715	1	-0.2	0.5
20140831	6100002		715	0	0.1	0.5
20140831	6100197		720	0	0.5	0.5
20140831	6100198		720	0	0.4	0.6
20140831	6100207		1385	0	0.8	0.5
20140831	6100208		1366	0	-0.9	0.5
20140809	6100209		361	0	-0.4	0.5
20140831	6100210		1384	0	1.3	0.6
20140831	6100211		1377	0	0.6	0.4
20140831	6100213		1379	0	1.5	0.4
20140831	6100214		1349	0	0.4	0.5
20140831	6100216		1273	0	0.5	0.4
20140831	6100218		303	0	0.9	0.4
20140831	6100219		1382	0	-0.0	0.4
20140831	6100220		1040	0	0.4	0.5
20140831	6100221		1028	0	-0.1	0.6
20140831	6100280		718	0	0.5	0.6
20140831	6100281		720	0	0.5	0.7
20140831	6100417		719	0	0.5	0.6

E-SURFMAR DB Monthly Report August 2014

20140831	6100430	720	0	0.4	0.5
20140831	6101001	230	0	0.7	0.6
20140831	6101003	203	0	1.2	0.6
20140831	6101007	211	0	0.5	0.5
20140831	6101008	235	0	0.6	0.6
20140831	6200001	720	0	0.2	0.4
20140831	6200024	719	0	0.5	0.6
20140831	6200025	716	0	0.4	0.6
20140831	6200027	238	0	0.1	0.4
20140831	6200029	641	0	0.2	0.5
20140831	6200030	694	0	-0.1	0.4
20140831	6200081	720	0	0.2	0.4
20140831	6200082	718	0	0.5	0.6
20140831	6200083	718	0	0.4	0.6
20140831	6200084	720	0	0.5	0.5
20140831	6200085	718	0	0.8	0.5
20140831	6200086	48	0	-0.5	0.8
20140809	6200087	212	0	0.0	0.6
20140831	6200091	708	0	-0.1	0.5
20140831	6200092	718	1	-0.1	0.5
20140831	6200093	719	0	-0.0	0.5
20140831	6200094	719	1	0.1	0.6
20140831	6200095	719	7	0.1	0.7
20140831	6200105	719	1	0.1	0.5
20140831	6200163	709	0	0.3	0.4
20140831	6200191	693	0	0.9	0.4
20140831	6200192	688	0	1.0	0.4
20140831	6200442	718	0	0.1	0.4
20140831	6400045	693	0	0.2	0.4
20140831	6400046	718	4	0.2	0.5

Air Temperature (C), moored buoys, August 2014

Datend	WMO	Telcom	Recvd	GE	Bias	Std
20140813	1300130		298	0	0.9	2.1
20140831	1300131		689	0	1.0	0.5
20140831	6100001		714	0	0.1	1.0
20140831	6100002		714	0	0.2	0.7
20140831	6100197		720	0	0.2	0.4
20140831	6100198		720	0	0.3	1.1
20140831	6100280		718	0	0.2	0.5
20140831	6100281		720	0	0.0	0.6
20140831	6100417		719	0	0.3	0.5
20140831	6100430		720	0	-0.0	0.4
20140831	6101001		230	0	0.2	0.8
20140831	6101007		211	0	2.7	0.7
20140831	6101008		235	0	-0.8	1.2
20140831	6200001		720	0	-0.1	0.5
20140831	6200024		719	0	0.7	0.5
20140831	6200025		716	0	0.1	0.7
20140831	6200029		641	0	-0.0	0.5
20140831	6200030		695	0	-0.9	0.5
20140831	6200081		720	0	-0.2	0.4
20140831	6200082		718	0	-0.1	0.5
20140831	6200083		718	0	0.3	0.4
20140831	6200084		720	0	0.4	0.7
20140831	6200085		718	0	-1.0	0.7
20140831	6200086		50	0	-1.0	1.0
20140809	6200087		213	0	-0.3	0.5
20140831	6200091		708	0	-0.0	0.4
20140831	6200092		718	0	-0.2	0.4
20140831	6200093		719	0	-0.1	0.4
20140831	6200094		719	0	0.3	0.6
20140831	6200095		706	0	-0.4	0.5
20140831	6200105		719	0	-0.3	0.4
20140831	6200163		693	0	-0.4	0.6
20140831	6200191		693	0	-0.1	0.5
20140831	6200192		688	0	0.1	0.4
20140831	6200442		718	0	-0.3	0.5
20140831	6400045		693	0	-0.4	0.5
20140831	6400046		718	0	-0.1	0.5
20140831	6600021		713	1	0.0	0.6
20140831	6600022		688	1	0.2	0.8
20140831	6600024		704	0	0.3	0.6

E-SURFMAR DB Monthly Report August 2014

Wind direction (deg.), moored buoys, August 2014

Datend	WMO	Telcom	Recvd	GE	Bias	Std
20140813	1300130		298	0	14	11
20140831	1300131		688	16	7	21
20140831	6100001		713	71	-10	34
20140831	6100002		211	43	18	30
20140831	6100197		712	10	-8	22
20140831	6100198		709	41	-8	31
20140831	6100280		706	40	-5	30
20140831	6100281		717	43	5	35
20140831	6100417		689	17	3	21
20140831	6100430		719	28	-10	31
20140831	6101001		230	27	-1	38
20140831	6101003		203	21	-2	45
20140831	6101007		212	0	54	30
20140831	6101008		235	1	7	21
20140831	6200001		719	2	3	20
20140831	6200024		683	28	8	32
20140831	6200025		712	55	-1	33
20140831	6200027		205	7	1	34
20140831	6200029		641	5	4	17
20140831	6200030		475	7	11	22
20140831	6200081		720	6	-3	17
20140831	6200082		716	13	1	20
20140831	6200083		717	5	-2	18
20140831	6200084		698	9	3	20
20140831	6200085		717	3	-7	20
20140831	6200086		48	0	-1	16
20140831	6200092		718	3	7	19
20140831	6200093		718	1	7	14
20140805	6200095		100	2	-5	30
20140831	6200105		717	1	-1	14
20140831	6200163		708	10	-5	17
20140831	6200191		685	20	-5	22
20140831	6200192		680	7	5	18
20140831	6200442		717	7	0	17
20140831	6400045		686	1	-5	14
20140831	6400046		715	2	4	15
20140831	6600021		710	20	-2	22
20140831	6600022		688	22	-14	21
20140831	6600024		705	18	-0	20

Wind speed rate, moored buoys, August 2014

Datend	WMO	Telcom	Recvd	GE	Rate	Err
20140813	1300130		298	0	1.0	0.9
20140831	1300131		688	0	0.8	3.5
20140831	6100001		713	0	1.5	2.1
20140831	6100002		211	0	0.6	5.5
20140831	6100197		712	0	1.1	1.1
20140831	6100198		709	0	1.2	1.9
20140831	6100280		706	0	1.2	1.3
20140831	6100281		717	0	1.4	1.8
20140831	6100417		689	0	0.9	1.2
20140831	6100430		719	1	1.6	1.5
20140831	6101001		230	0	1.4	2.0
20140831	6101003		203	0	0.9	3.4
20140831	6101007		212	0	0.0	0.0
20140831	6101008		235	0	0.8	1.6
20140831	6200001		719	0	1.1	1.0
20140831	6200024		683	0	1.1	1.3
20140831	6200025		712	0	0.9	2.0
20140831	6200027		205	0	1.1	1.1
20140831	6200029		641	0	1.1	1.4
20140831	6200030		475	0	1.0	1.4
20140831	6200081		720	0	1.1	1.4
20140831	6200082		716	0	0.9	1.4
20140831	6200083		717	0	1.0	1.5
20140831	6200084		698	0	0.9	1.3
20140831	6200085		717	0	0.9	1.6
20140831	6200086		48	0	1.1	1.9

E-SURFMAR DB Monthly Report August 2014

20140831	6200092	718	0	1.0	1.4
20140831	6200093	718	0	1.0	1.2
20140805	6200095	100	0	0.8	2.1
20140831	6200105	717	0	1.0	1.1
20140831	6200163	708	0	1.2	1.3
20140831	6200191	685	0	1.0	1.1
20140831	6200192	680	0	1.1	1.0
20140831	6200442	717	0	1.0	1.1
20140831	6400045	686	0	1.0	1.1
20140831	6400046	715	1	1.0	1.3
20140831	6600021	710	0	1.4	1.7
20140831	6600022	688	0	1.3	1.2
20140831	6600024	705	0	1.3	1.3

Comments on QC statistics :

Air pressure

1. Metocean buoys WMO **4400724** and **4400875** reported wrong pressure values onto the GTS before the transmission of this parameter was stopped.
2. During the month, the GTS data transmission for air pressure measured by buoy WMO **4400850** was stopped after the data were judged wrong then it was rehabilitated again. Some data appears inaccurate from time to time.
3. Metocean buoy WMO **2500618** reported wrong pressure data onto the GTS before the transmission stopped a few days later.
4. Systematic biases of about 1.2-1.5 hPa in absolute values have been seen on Italian moored buoys WMO **6100210** and **6100213**. and Greek buoy WMO **6101003**

Air temperature

5. Air temperature measurements, carried out by Greek Poseidon buoy WMO **6101007**, seem systematically biased for more than 2.0 °C.

Wind

6. Greek moored buoy WMO **6101007** continue to report abnormal calm winds onto the GTS.
7. Lion moored buoy (WMO **6100002**) reported dubious wind data before being replaced on August 27th.

Monthly QC statistics and other data quality control tools are available on line at :

<http://www.meteo.shom.fr/qctools/>

The working area of the E-SURFMAR website is open at <http://esurfmar.meteo.fr/wikisurf-wa/> . Ask the E-SURFMAR Programme Manager Pierre.Blouch@meteo.fr for the password in case you forgot it. Graphs of system performances may be displayed/downloaded at http://esurfmar.meteo.fr/doc/r/surfmar/others/e-surfmar_monitoring.pdf.