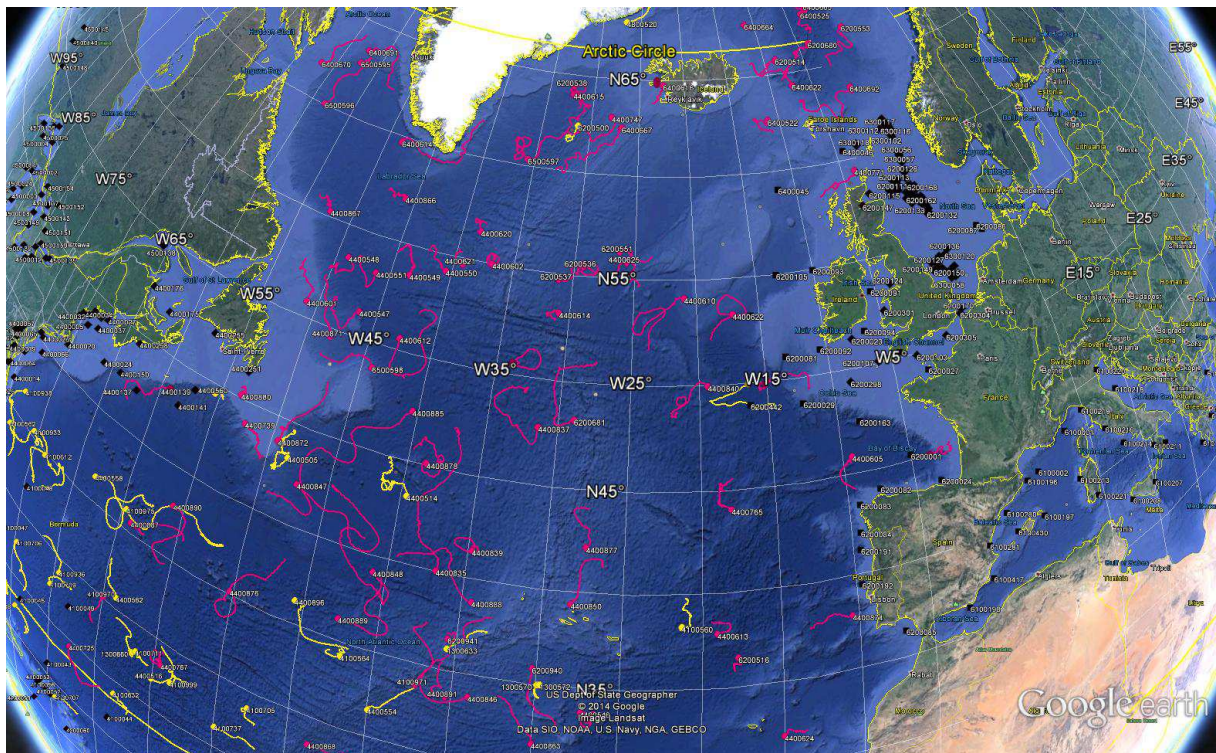


DATA BUOY MONTHLY REPORT

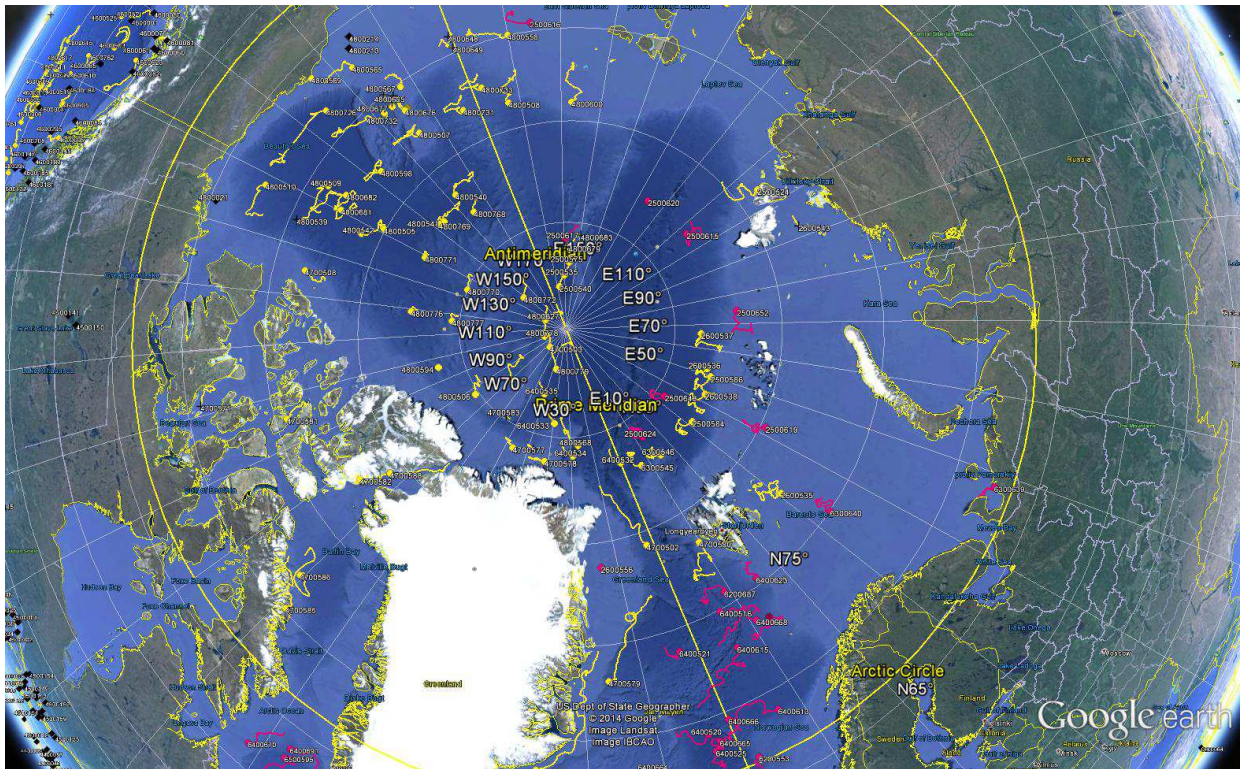
September 2014



September 2014 : Operating data buoys in the North Atlantic
Drifting buoy trajectories : E-SURFMAR (red), others (yellow)
Moored buoy positions (black)

Most recent trajectories may be seen at:
http://www.meteo.shom.fr/cartographie/data/kml/MeteoFrance_buoys_map_15.kmz

E-SURFMAR DB Monthly Report September 2014



September 2014
Drifting buoy trajectories in Artic Ocean and adjacent seas : E-SURFMAR (red), others (yellow)

DRIFTING BUOYS

Network status

By the end of September, **113 Drifting buoys**, reporting air pressure onto the GTS, were in operation in the frame of E-SURFMAR. Out of these, 79 were E-SURFMAR funded Iridium SVP-Bs, including 9 in the Arctic and 9 HRSST-2 buoys. The remaining buoys were: 34 Iridium drifters owned by NOAA and upgraded with barometers by E-SURFMAR.

Information about the availability of buoys for future deployments may be get from the E-SURFMAR wikisite (working area) at: http://esurfmar.meteo.fr/wikisurf-wa/index.php/Availability_of_drifting_buoys

Besides E-SURFMAR buoys, 63 drifting buoys were reporting at least air pressure observations from the EUMETNET area of interest. Out of these, 3 were reporting Sea Surface Salinity, some in the frame of Spurs/Strasse campaign (validation of SMOS and Aquarius remote SSS measurements).

Drifting buoys - New deployments

WMO	Telcom	Typ	Ow	Dep_Date	DepLat	DepLon	From	Comment
2500617	61767070	MSB	EU	20140921	85.1	152.6	Helsingborg	Oden
2500620	61760090	MSB	EU	20140927	82.7	123.9	Helsingborg	Oden
4400549	60896130	MSB	EU	20140907	54.4	-45.0	Liverpool	OOCL Belgium
4400550	60894140	MSB	EU	20140907	54.9	-42.0	Liverpool	OOCL Belgium
4400551	60892140	MSB	EU	20140907	53.9	-47.9	Liverpool	OOCL Belgium
4400601	60890150	MSB	EU	20140908	52.7	-52.5	Liverpool	OOCL Belgium
6200539	60891140	MSB	EU	20140905	56.5	-22.9	Liverpool	OOCL Belgium
6200551	60897120	MSB	EU	20140905	56.5	-26.0	Liverpool	OOCL Belgium
6300641	61665210	MSB	EU	20141001	76.2	37.7	Helsingborg	Oden

Operating drifting buoys in North Atlantic by the end of the month

WMO	Telcom	Typ	Ow	nobs	Wi	AT	AP	dP	ST	Wa	Ws	Dr	Sb	U	SS	O	Start_end	Lat	Lon	Age
2500615	61660360	MSB	EU	718	-	-	X	X	X	-	-	X	-	-	-	T	0109-3009	82.89	106.69	77
2500616	61762070	MSB	EU	718	-	-	X	X	X	-	-	X	-	-	-	T	0109-3009	74.52	165.56	56
2500617	61767070	MSB	EU	183	-	-	X	X	X	-	-	X	-	-	-	T	2309-3009	85.78	159.01	10
2500619	60276270	MSB	EU	718	-	-	X	X	X	-	-	X	-	-	-	T	0109-3009	79.74	41.81	398
2500620	61760090	MSB	EU	39	-	-	X	X	X	-	-	X	-	-	-	T	2909-3009	82.92	126.00	4
2500624	60247420	MSB	EU	718	-	-	X	X	X	-	-	X	-	-	-	T	0109-3009	83.93	13.36	396
2500648	60370080	MSB	EU	718	-	-	X	X	X	-	-	X	-	-	-	T	0109-3009	84.53	33.72	391
2500652	60176700	MSB	EU	718	-	-	X	X	X	-	-	X	-	-	-	T	0109-3009	82.09	74.34	389
2600556	11549080	MSB	EU	718	-	-	X	X	-	-	-	X	-	-	-	T	0109-3009	78.83	-14.00	738
4100969	60213780	PSB	UP	638	-	-	X	X	X	-	-	X	-	-	-	T	0109-3009	28.14	-24.84	419
4100970	60213790	PSB	UP	719	-	-	X	X	X	-	-	X	-	-	-	T	0109-3009	30.21	-59.80	418
4100971	60215900	PSB	UP	719	-	-	X	X	X	-	-	X	-	-	-	T	0109-3009	33.86	-37.20	418
4100972	60217780	PSB	UP	694	-	-	X	X	X	-	-	X	-	-	-	T	0109-2909	28.25	-33.04	417
4400546	11160640	MSB	EU	718	-	-	X	X	X	-	-	X	-	-	-	T	0109-3009	33.71	-27.23	560
4400547	60173710	MSB	EU	718	-	-	X	X	X	-	-	X	-	-	-	T	0109-3009	51.21	-46.41	51
4400548	11799230	MSB	E2	718	-	-	X	X	X	-	-	X	-	-	-	T	0109-3009	53.51	-48.85	51
4400549	60896130	MSB	EU	535	-	-	X	X	X	-	-	X	-	-	-	T	0809-3009	53.59	-43.32	24
4400550	60894140	MSB	EU	535	-	-	X	X	X	-	-	X	-	-	-	T	0809-3009	54.22	-40.47	24
4400551	60892140	MSB	EU	535	-	-	X	X	X	-	-	X	-	-	-	T	0809-3009	53.23	-46.12	24
4400601	60890150	MSB	EU	535	-	-	X	X	X	-	-	X	-	-	-	T	0809-3009	50.78	-50.90	23
4400602	11468700	MSB	UP	718	-	-	X	X	X	-	-	X	-	-	-	T	0109-3009	55.00	-36.79	558
4400605	11473110	MSB	EU	718	-	-	X	X	X	-	-	X	-	-	-	T	0109-3009	45.87	-9.36	508
4400610	61517860	MSB	EU	719	-	-	X	X	X	-	-	X	-	-	-	T	0109-3009	54.12	-20.98	295
4400612	61511880	MSB	EU	719	-	-	X	X	X	-	-	X	-	-	-	T	0109-3009	50.57	-42.65	283
4400613	11475040	MSB	EU	718	-	-	X	X	X	-	-	X	-	-	-	T	0109-3009	37.95	-19.10	574
4400614	61661340	MSB	EU	717	-	-	X	X	X	-	-	X	-	-	-	T	0109-3009	53.16	-30.80	154

E-SURFMAR DB Monthly Report September 2014

6400669	60177710	MSB	EU	718	-	-	X	X	X	-	-	X	-	-	-	T	0109-3009	65.00	-23.09	279
6400670	61513850	MSB	EU	703	-	-	X	X	X	-	-	X	-	-	-	T	0109-3009	61.85	-61.59	236
6400691	61514870	MSB	EU	719	-	-	X	X	X	-	-	X	-	-	-	T	0109-3009	63.50	-57.18	235
6400692	60172720	MSB	EU	718	-	-	X	X	X	-	-	X	-	-	-	T	0109-3009	63.63	-0.72	222
6400693	60173720	MSB	EU	718	-	-	X	X	S	-	-	X	-	-	-	T	0109-3009	64.80	-23.12	216
6500595	11595570	MSB	EU	718	-	-	X	X	X	-	-	X	-	-	-	T	0109-3009	62.75	-57.21	106
6500596	61511850	MSB	EU	713	-	-	X	X	X	-	-	X	-	-	-	T	0109-3009	60.05	-58.28	104
6500597	11595650	MSB	EU	718	-	-	X	X	X	-	-	X	-	-	-	T	0109-3009	60.33	-35.66	110
6500598	11792240	MSB	E2	716	-	-	X	X	X	-	-	X	-	-	-	T	0109-3009	48.85	-44.11	98

Drifting buoys which ceased to be operational

WMO	Telcom	Typ	Ow	End_Date	Lat	Lon	Age	Cause
-----	--------	-----	----	----------	-----	-----	-----	-------

Non-operating drifting buoys reporting GTS data

WMO	Telcom	Typ	Ow	nobs	Wi	AT	AP	dP	ST	Wa	Ws	Dr	Sb	U	SS	O	Start_end	Lat	Lon	Age
-----	--------	-----	----	------	----	----	----	----	----	----	----	----	----	---	----	---	-----------	-----	-----	-----

Non-operating drifting buoys which ceased to emit

WMO	Telcom	Typ	Ow	End_Date	Lat	Lon	Age	Cause
4400724	13300270	MSB	EU	20140919	65.1	-7.8	818	Battery empty
4400875	11021610	MSB	EU	20140911	30.6	-43.6	909	Battery empty

Other operating drifting buoys inside the EUMETNET by the end of the month

WMO	Telcom	Typ	Ow	nobs	Wi	AT	AP	dP	ST	Wa	Ws	Dr	Sb	U	SS	O	Start_end	Lat	Lon
1300569				139	-	-	X	-	X	-	-	X	-	-	-	L	2409-3009	35.03	-29.89
1300570				145	-	-	X	-	X	-	-	X	-	-	-	L	2409-3009	35.03	-29.89
1300572				143	-	-	X	X	X	-	-	X	-	-	-	L	2409-3009	35.06	-29.72
1300633	109491	AOML		654	-	-	X	X	X	-	-	X	-	-	-	L	0109-3009	36.20	-35.51
1300659	11910180	UKMO		718	-	-	X	X	X	-	-	X	-	-	-	T	0109-3009	25.43	-43.83
1300660	11022040	UKMO		718	-	-	X	X	X	-	-	X	-	-	-	T	0109-3009	28.14	-56.66
1300662	11098800	UKMO		717	-	-	X	X	X	-	-	X	-	-	-	T	0109-3009	22.56	-35.34
1300664	11090810	UKMO		716	-	-	X	X	X	-	-	X	-	-	-	T	0109-3009	23.02	-42.00
1300667	60898000	UKMO		716	-	-	X	X	X	-	-	X	-	-	-	T	0109-3009	15.14	-17.54
1300668	60897010	UKMO		717	-	-	X	X	-	-	-	X	-	-	-	T	0109-3009	1.48	3.94
1500549	60794980	UKMO		718	-	-	X	X	X	-	-	X	-	-	-	T	0109-3009	1.62	-26.47
2500584	2500584	PSC		718	-	-	X	X	X	-	-	X	-	-	-	T	0109-3009	82.82	31.70
2500585	61501340	AOML		9	-	-	X	X	X	-	-	X	-	-	-	T	3009-3009	86.55	-69.02
2600535	971540	PSC		721	-	S	X	X	X	-	-	-	-	-	-	O	0109-3009	77.45	30.66
2600538	61369400	PSC		621	-	-	X	X	X	-	-	-	-	-	-	O	0109-2909	83.10	39.98
3100862	61213570	LOCE		1437	-	-	X	X	X	-	-	X	-	-	X	T	0109-3009	4.13	-12.24
4100560	114550	AOML		669	-	-	X	-	-	-	-	X	-	-	-	L	0109-3009	38.39	-21.30
4100564	109221	AOML		661	-	-	X	-	X	-	-	X	-	-	-	L	0109-3009	34.25	-42.06
4100596	11473050	EUME		719	-	-	X	X	X	-	-	X	-	-	-	T	0109-3009	19.40	-54.97
4100597	61512840	AOML		719	-	-	X	X	X	-	-	X	-	-	-	T	0109-3009	20.74	-46.96
4100598	61610040	AOML		719	-	-	X	X	X	-	-	X	-	-	-	T	0109-3009	21.32	-42.22
4100599	61615070	AOML		719	-	-	X	X	X	-	-	X	-	-	-	T	0109-3009	15.89	-53.90
4100600	61618040	AOML		719	-	-	X	X	X	-	-	X	-	-	-	T	0109-3009	13.59	-52.04
4100612	123247	AOML		601	-	-	X	X	X	-	-	X	-	-	-	L	0109-3009	34.92	-68.43
4100632	11474050	EUME		718	-	-	X	X	X	-	-	X	-	-	-	T	0109-3009	24.08	-58.03
4100705	11596570	AOML		718	-	-	X	X	X	-	-	X	-	-	-	T	0109-3009	28.94	-47.70
4100706	11595580	AOML		718	-	-	X	X	X	-	-	X	-	-	-	T	0109-3009	27.80	-69.49
4100707	11590580	AOML		718	-	-	X	X	X	-	-	X	-	-	-	T	0109-3009	18.66	-64.23
4100708	11585510	AOML		718	-	-	X	X	X	-	-	X	-	-	-	T	0109-3009	22.75	-69.13
4100709	11598570	AOML		718	-	-	X	X	X	-	-	X	-	-	-	T	0109-3009	27.77	-65.05
4100711	11477030	EUME		718	-	-	X	X	X	-	-	X	-	-	-	T	0109-3009	28.34	-56.44
4100737	60342390	CMM		578	-	-	X	X	X	-	-	X	-	-	X	T	0109-3009	26.61	-49.85
4100800	60547830	CMM		657	-	-	X	X	X	-	-	X	-	-	X	T	0109-3009	23.84	-43.19
4100933	101721	AOML		651	-	-	X	X	X	-	-	X	-	-	-	L	0109-2909	35.67	-70.00
4100936	109488	AOML		612	-	-	X	X	X	-	-	X	-	-	-	L	0109-3009	29.11	-64.31
4100975	109439	AOML		647	-	-	X	X	X	-	-	X	-	-	-	L	0109-3009	36.17	-59.51

E-SURFMAR DB Monthly Report September 2014

4100999	114623	AOML	556	-	-	X	X	X	-	-	X	-	-	-	L	0109-3009	27.82	-53.43
4400505	98087	ICEP	1475	-	-	X	X	X	-	-	-	-	-	-	L	0109-3009	43.26	-48.41
4400514	126483	AOML	667	-	-	X	X	X	-	-	X	-	-	-	L	0109-3009	43.35	-39.56
4400516	114599	AOML	539	-	-	X	X	X	-	-	X	-	-	-	L	0109-3009	27.25	-54.94
4400554	126479	AOML	663	-	-	X	X	X	-	-	X	-	-	-	L	0109-3009	31.71	-39.92
4400558	123286	AOML	668	-	-	X	X	X	-	-	X	-	-	-	L	0109-3009	36.52	-62.97
4400560	126480	AOML	663	-	-	X	X	X	-	-	X	-	-	-	L	0109-3009	44.59	-55.40
4400562	126482	AOML	654	-	-	X	X	X	-	-	X	-	-	-	L	0109-3009	30.77	-58.70
4400690	11248370	EC	720	-	-	X	X	X	-	-	X	-	-	-	O	0109-3009	49.99	-16.41
4400896	109438	AOML	656	-	-	X	X	X	-	-	X	-	-	-	L	0109-3009	36.35	-45.60
4700502	61366400	PSC	720	-	-	X	X	X	-	-	-	-	-	-	O	0109-3009	79.34	-1.73
4700503			15	-	-	X	X	X	-	-	-	-	-	-	L	3009-3009	88.89	-64.09
4700577	11096790	AWI	720	-	X	X	-	-	-	-	-	-	-	-	O	0109-3009	84.00	-46.51
4700578	11985170	EC/M	720	-	-	X	X	S	-	-	-	-	-	-	O	0109-3009	83.83	-31.52
4700579	11097780	EC/M	720	-	-	X	X	X	-	-	-	-	-	-	O	0109-3009	73.14	-15.67
4700585	11541430	EC	198	-	-	X	X	X	-	-	X	-	-	-	O	2209-3009	70.19	-68.61
4700586	11541440	EC	330	-	-	X	X	X	-	-	X	-	-	-	O	1509-2809	72.30	-69.92
4800520	46517	PSC	714	-	X	X	X	-	-	-	-	-	-	-	L	0109-3009	68.21	-26.95
4800568	61363210	PSC	720	-	-	X	X	X	-	-	-	-	-	-	O	0109-3009	84.62	-16.30
4800597	100009	PSC	7	X	X	X	-	-	-	-	X	-	-	-	O	3009-3009	86.55	-69.11
4800779	60890090	EC	696	-	S	X	X	X	-	-	-	-	-	-	O	0209-3009	88.10	-35.66
6300545	61367410	PSC	720	-	-	X	X	X	-	-	X	-	-	-	O	0109-3009	82.84	6.78
6300546	61361200	PSC	720	-	-	X	X	X	-	-	-	-	-	-	O	0109-3009	82.77	14.87
6400532			136	-	-	X	X	X	-	-	-	-	-	-	L	2509-3009	83.37	0.06
6400533			136	-	-	X	X	X	-	-	-	-	-	-	L	2509-3009	85.63	-29.19
6400534			136	-	-	X	X	X	-	-	-	-	-	-	L	2509-3009	84.16	-19.08
6400535			136	-	-	X	X	X	-	-	-	-	-	-	L	2509-3009	86.86	-40.64

----- Abbreviations -----

WMO : WMO id.
 Argos : Argos id.
 Typ : Buoy type
 - first character : Manufacturer (C = ConMar , M = Metocean, P = Pacific Gyre
 T = Technocean, Y = Marlin-Yug...)
 - second character : Main type (F = FGGE, I = ICEB, S = SVP)
 - third character : Sub type (B = barometer buoy, W = Wind buoy,
 S = Salinity buoy)

Ow : Buoy owner (country code or EU for EUCOS, E2 for HRSST-2 buoys, UP for upgraded
 buoys)
 Owner : Buoy owner for non EUCOS buoys
 Nobs : number of GTS reports received at Meteo-France
 Parameters (X = OK, S = stopped, - = not measured) :
 Wi : Wind
 AT : Air Temperature
 AP : Air Pressure
 dP : Air pressure tendency
 ST : Sea surface Temperature
 Wa : Wave period and height
 Ws : Wave spectra
 Dr : Drogue presence
 Sb : Subsurface temperature
 U : Relative humidity
 SS : Sea surface Salinity

O : Origin of the reports (T = Argos Toulouse, L = Argos Largo, O = Other)
 Start_end : first and last dates of the month for which GTS data were received at Meteo-France
 Lat : Latitude of the latest position
 Lon : Longitude of the latest position
 Age : Age of the buoy (days)

DepDate : Date of deployment
 DepLat : Latitude of deployment
 Dep Lon : Longitude of Deployment
 From : Harbour of departure

Definition : An operating drifting buoy is a buoy providing at least air pressure or wind
 (direction and velocity) data.

MOORED BUOYS

Former EGOS stations (K-pattern and Hydrosphere)

WMO	Name	nobs	Wi	AT	AP	dP	ST	Wa	Ws	Dr	Sb	U	SS	O	Start_end	Lat	Lon
6100001	Cote d'Azur	716	X	X	X	X	X	X	X	-	-	X	-	T	0109-3009	43.40	7.80
6100002	Lion	715	X	X	X	X	X	X	X	-	-	X	-	T	0109-3009	42.10	4.70
6200001	Gascogne	657	X	X	X	X	X	X	-	-	-	X	-	O	0109-3009	45.30	-5.00
6200029	K1	621	X	X	X	-	X	X	-	-	-	X	-	O	0109-3009	48.70	-12.50
6200081	K2	663	X	X	X	X	X	X	-	-	-	X	-	O	0109-3009	51.00	-13.20
6200090	M1	-	-	-	-	-	-	-	-	-	-	-	-	-	-	53.10	-11.20
6200091	M2	718	X	X	X	-	X	X	-	-	-	X	-	O	0109-3009	53.50	-5.40
6200092	M3	719	X	X	X	-	X	X	-	-	-	X	-	O	0109-3009	51.20	-10.50
6200093	M4	718	X	X	X	-	X	X	-	-	-	-	-	O	0109-3009	54.70	-9.10
6200094	M5	11	-	S	S	-	-	-	-	-	-	-	-	-	0109-0109	51.70	-6.70
6200095	M6	672	X	X	X	X	X	X	-	-	-	X	-	O	0109-3009	53.10	-15.90
6200105	K4	658	X	X	X	X	X	X	-	-	-	X	-	O	0109-3009	55.80	-11.40
6200108	K3	-	-	-	-	-	-	-	-	-	-	-	-	-	-	53.50	-19.50
6200163	Brittany	659	X	X	X	X	X	X	-	-	-	X	-	O	0109-3009	47.50	-8.40
6400045	K5	654	X	X	X	X	X	X	-	-	-	X	-	O	0109-3009	59.10	-11.70
6400046	K7	698	X	X	X	-	X	X	-	-	-	X	-	O	0109-3009	60.70	-5.20

Comments:

- EUMETNET moored buoys are presented in bold characters.

Former EGOS moored buoys (Spanish SeaWatch and WaveScan)

WMO	Name	nobs	Wi	AT	AP	dP	ST	Wa	Ws	Dr	Sb	U	SS	O	Start_end	Lat	Lon
1300130	Gran Canaria	-	-	-	-	-	-	-	-	-	-	-	-	-	-	28.18	-15.82
1300131	Tenerife Sur	717	X	X	X	-	X	X	X	-	-	-	-	O	0109-3009	28.00	-16.58
6100196	C. Begur	490	X	X	X	-	-	X	X	-	-	-	-	O	1009-3009	41.92	3.65
6100197	Mahon	720	X	X	X	-	-	X	X	-	-	-	-	O	0109-3009	39.72	4.42
6100198	C. de Gata	720	X	X	X	-	X	X	X	-	-	-	X	O	0109-3009	36.57	-2.33
6100280	Tarragona	720	X	X	X	-	X	X	X	-	-	-	X	O	0109-3009	40.77	1.47
6100281	Valencia	720	X	X	X	-	X	X	X	-	-	-	X	O	0109-3009	39.47	-0.27
6100417	C. de Palos	719	X	X	X	-	X	X	X	-	-	-	X	O	0109-3009	37.65	-0.32
6100430	Dragonera	720	X	X	X	-	X	X	X	-	-	-	-	O	0109-3009	39.56	2.11
6200024	Bilbao-Visc.	719	X	X	X	-	X	X	X	-	-	-	X	O	0109-3009	43.63	-3.03
6200025	C. de Penas	720	X	X	X	-	X	X	X	-	-	-	X	O	0109-3009	43.73	-6.17
6200082	E. de Bares	720	X	X	X	-	X	X	X	-	-	-	X	O	0109-3009	44.13	-7.69
6200083	Villano-Sis.	719	X	X	X	-	X	X	X	-	-	-	X	O	0109-3009	43.48	-9.22
6200084	C. Silleiro	720	X	X	X	-	X	X	X	-	-	-	X	O	0109-3009	42.12	-9.43
6200085	G. de Cadiz	720	X	X	X	-	X	X	X	-	-	-	X	O	0109-3009	36.48	-6.97
6201030	Santander	-	-	-	-	-	-	-	-	-	-	-	-	-	-	43.84	-3.77

Comments:

- The EUMETNET buoy is presented in bold characters.

Operating ISPRA moored buoys (Italy)

WMO	Name	nobs	Wi	AT	AP	dP	ST	Wa	Ws	Dr	Sb	U	SS	O	Start_end	Lat	Lon
6100207		816	-	-	X	-	X	X	-	-	-	-	-	O	0109-3009	37.44	15.15
6100208		874	-	-	S	-	S	S	-	-	-	-	-	-	0109-2209	37.52	12.53
6100209		-	-	-	-	-	-	-	-	-	-	-	-	-	-	38.26	13.33
6100210		1384	-	-	X	-	X	X	-	-	-	-	-	O	0109-3009	39.02	17.22
6100211		1379	-	-	X	-	X	X	-	-	-	-	-	O	0109-3009	39.45	15.92
6100212		-	-	-	-	-	-	-	-	-	-	-	-	-	-	40.62	9.89
6100213		1381	-	-	X	-	X	X	-	-	-	-	-	O	0109-3009	40.55	8.11
6100214		1318	-	-	X	-	X	X	-	-	-	-	-	O	0109-3009	40.87	12.95
6100215		1050	-	-	-	-	X	X	-	-	-	-	-	O	0109-3009	40.98	17.38
6100216		1341	-	-	X	-	X	X	-	-	-	-	-	O	0109-3009	42.24	11.55
6100218		473	-	-	X	-	X	X	-	-	-	-	-	O	0209-3009	43.83	13.72
6100219		1323	-	-	X	-	X	X	-	-	-	-	-	O	0109-3009	43.93	9.83
6100220		1212	-	-	X	-	X	X	-	-	-	-	-	O	0109-3009	45.33	12.52
6100221		1385	-	-	X	-	X	X	-	-	-	-	-	O	0109-3009	39.12	9.40

**E-SURFMAR DB Monthly Report
September 2014**

Operating POSEIDON moored buoys (Greece)

WMO	Name	nobs	Wi	AT	AP	dP	ST	Wa	Ws	Dr	Sb	U	SS	O	Start_end	Lat	Lon
6101000			-	-	-	-	-	-	-	-	-	-	-			39.10	24.50
6101001		222	X	X	X	-	X	X	-	-	-	-	-	O	0109-3009	37.60	23.60
6101002			-	-	-	-	-	-	-	-	-	-	-			37.00	22.10
6101003		140	S	-	S	-	S	S	-	-	-	-	-		0109-1809	40.00	24.70
6101004			-	-	-	-	-	-	-	-	-	-	-			39.10	25.80
6101005			-	-	-	-	-	-	-	-	-	-	-			37.50	25.50
6101006			-	-	-	-	-	-	-	-	-	-	-			36.30	25.50
6101007		238	X	X	X	-	X	X	-	-	-	-	-	O	0109-3009	35.80	24.90
6101008		216	X	X	X	-	X	X	-	-	-	-	-	O	0109-3009	36.80	21.60
6101009			-	-	-	-	-	-	-	-	-	-	-			38.00	20.60

Other European moored buoys (operated by 3rd parties)

WMO	Name	nobs	Wi	AT	AP	dP	ST	Wa	Ws	Dr	Sb	U	SS	O	Start_end	Lat	Lon
1200050	Cycofos		-	-	-	-	-	-	-	-	-	-	-			33.60	31.90
6100010	Italia-1		-	-	-	-	-	-	-	-	-	-	-			43.80	9.10
6200027	Jersey	18	S	-	S	S	-	S	-	-	-	-	-		0109-1109	49.08	-22.20
6200030	L4	621	X	X	X	-	S	-	-	-	-	X	-	O	0109-3009	50.25	-4.22
6200050	E1		-	-	-	-	-	-	-	-	-	-	-			50.04	-4.37
6200086	NSB II	44	S	S	S	S	S	-	-	-	-	S	-		0109-2609	55.00	6.40
6200087	NSB III	573	S	S	S	S	S	-	-	-	-	S	-		0109-2509	54.70	6.80
6200191	Porto	356	S	S	S	-	S	S	-	-	-	-	-		0109-1609	41.15	-9.57
6200192	Peniche	676	X	X	X	-	X	X	-	-	-	-	-	O	0109-3009	39.50	-9.65
6200303	Turbo Bank	657	-	-	-	-	-	X	-	-	-	-	-	O	0109-3009	51.60	-5.10
6200442	PAP	693	X	X	X	-	S	X	-	-	-	X	-	O	0109-3009	49.00	-16.40
6600021	Arkona Becken	718	X	X	-	-	X	X	-	-	-	-	-	O	0109-3009	54.90	13.90
6600022	Oder Bank	681	X	X	-	-	X	-	-	-	-	-	-	O	0109-3009	54.10	14.20
6600024	Darsser Schwell	713	X	X	-	-	X	X	-	-	-	-	-	O	0109-3009	54.70	12.70

Other offshore moored buoys inside the EUMETNET area

WMO	Name	nobs	Wi	AT	AP	dP	ST	Wa	Ws	Dr	Sb	U	SS	O	Start_end	Lat	Lon
1300001		527	X	X	X	-	X	-	-	-	-	X	S	L	0109-3009	11.47	-23.00
1300008		459	X	X	X	-	X	-	-	-	-	X	-	L	0109-3009	14.98	-38.02
1300308	East Atlantic		-	-	-	-	-	-	-	-	-	-	-			15.00	-38.00
4100026		390	X	X	-	-	X	-	-	-	-	X	-	L	0109-3009	11.49	-38.40
4100040	West Atlantic	710	X	X	X	X	X	X	-	-	-	X	-	O	0109-3009	14.50	-53.00
4100041	Mid. Atlantic	703	X	X	X	X	X	X	-	-	-	-	-	O	0109-3009	14.50	-46.00
4100043	Porto Rico	709	X	X	X	X	X	X	-	-	-	X	-	O	0109-3009	21.00	-65.00
4100044		718	X	X	X	X	X	X	-	-	-	X	-	O	0109-3009	21.70	-58.70
4100046		719	X	X	X	X	X	X	-	-	-	X	-	O	0109-3009	23.90	-70.90
4100047			-	-	-	-	-	-	-	-	-	-	-			27.50	-71.50
4100048		718	X	X	X	X	X	X	-	-	-	X	-	O	0109-3009	32.00	-69.60
4100049		714	X	X	X	X	X	X	-	-	-	X	-	O	0109-3009	27.50	-53.00
4100139		499	X	X	X	-	X	-	-	-	-	X	-	L	0109-3009	20.02	-37.86
4100300	Antilles		-	-	-	-	-	-	-	-	-	-	-			15.85	-57.47
4200059	Caraibes	718	X	X	X	X	X	X	-	-	-	X	-	O	0109-3009	15.00	-67.50
4400008	A Nantucket		-	-	-	-	-	-	-	-	-	-	-			40.50	-69.40
4400011	D Georges Bk		-	-	-	-	-	-	-	-	-	-	-			41.10	-66.60
4400018	SE Cape Cod		-	-	-	-	-	-	-	-	-	-	-			41.30	-69.30
4400024	NNE Channel	652	X	X	X	-	X	X	-	-	-	-	-	O	0109-3009	42.30	-65.90
4400137	E Scotia Sl.	718	X	X	X	X	X	X	-	-	-	-	-	O	0109-3009	42.30	-62.00
4400138	SW Gd Banks		-	-	-	-	-	-	-	-	-	-	-			44.30	-53.60
4400139	Beanquereau	713	X	X	X	X	X	X	-	-	-	-	-	O	0109-3009	44.30	-57.10
4400140	Tail of Bk		-	-	-	-	-	-	-	-	-	-	-			43.80	-51.70
4400141	Larentian F	715	X	X	X	X	X	X	-	-	-	-	-	O	0109-3009	43.00	-58.00
4400150	La Have Bk	710	X	X	X	X	X	X	-	-	-	-	-	O	0109-3009	42.50	-64.00

E-SURFMAR DB Monthly Report September 2014

Buoy-QC statistics from Meteo-France model outputs

Datend : Date of the last value received on GTS
Recvd : Total number of values received on GTS
GE : Number of Gross Errors (excluded from bias and sd computations)
bias : Mean differences between observation values and co-located model output values
Std : Standard deviation of differences

Air Pressure (hPa), drifting buoys, September 2014

Datend	WMO	Telcom	Recvd	GE	Bias	Std
20140930	2500615	61660360	718	0	-0.1	0.4
20140930	2500616	61762070	718	0	-0.1	0.4
20140930	2500617	61767070	183	0	-0.7	0.3
20140930	2500619	60276270	718	0	-0.4	0.5
20140930	2500620	61760090	39	0	-0.6	0.5
20140930	2500624	60247420	718	0	0.0	0.5
20140930	2500648	60370080	718	0	-0.2	0.5
20140930	2500652	60176700	718	0	-0.3	0.5
20140930	2600556	11549080	718	0	-0.4	0.5
20140930	4100969	60213780	638	0	-0.3	0.3
20140930	4100970	60213790	719	0	0.1	0.5
20140930	4100971	60215900	719	0	0.1	0.3
20140929	4100972	60217780	694	0	0.1	0.3
20140930	4400546	11160640	718	0	-0.2	0.3
20140930	4400547	60173710	718	0	0.6	0.7
20140930	4400548	11799230	718	0	0.2	0.5
20140930	4400549	60896130	535	0	-0.0	0.7
20140930	4400550	60894140	535	0	-0.1	0.7
20140930	4400551	60892140	535	0	0.3	0.7
20140930	4400601	60890150	535	0	-0.4	0.7
20140930	4400602	11468700	718	0	-0.2	0.5
20140930	4400605	11473110	718	0	-0.3	0.4
20140930	4400610	61517860	719	0	0.4	0.5
20140930	4400612	61511880	719	0	-0.0	0.6
20140930	4400613	11475040	718	0	-0.3	0.4
20140930	4400614	61661340	717	0	0.3	0.7
20140930	4400615	61666340	719	0	-0.7	0.7
20140930	4400620	61667370	719	0	0.1	0.6
20140930	4400621	61519840	719	0	0.3	0.6
20140930	4400622	61668320	719	0	0.4	0.5
20140930	4400624	11341110	712	0	-0.0	0.4
20140930	4400625	61668340	719	0	0.3	0.4
20140930	4400725	11027170	718	0	0.1	0.6
20140930	4400739	61516840	719	0	0.4	0.6
20140930	4400740	11883820	719	0	-0.1	0.3
20140930	4400747	61610060	584	0	-0.1	0.7
20140930	4400765	11685410	718	0	0.2	0.4
20140930	4400767	11919510	718	1	-0.0	0.7
20140930	4400771	60507000	718	0	-0.0	0.3
20140930	4400773	60211790	712	0	0.2	0.3
20140930	4400835	60218770	719	0	-0.2	0.3
20140930	4400836	60218680	719	0	0.1	0.5
20140930	4400837	60209590	719	0	0.0	0.4
20140930	4400839	60205090	719	0	-0.0	0.3
20140930	4400840	60208710	719	0	0.2	0.4
20140930	4400846	60441290	717	0	0.4	0.3
20140930	4400847	60442280	718	2	0.2	0.7
20140930	4400848	60448280	718	0	0.1	0.4
20140930	4400850	60648340	718	13	1.1	1.4
20140930	4400876	60648350	715	0	0.5	0.4
20140930	4400863	60211690	719	0	0.1	0.3
20140930	4400866	11793240	717	0	-0.3	0.6
20140930	4400867	11593590	718	0	-0.4	0.7
20140930	4400868	11794230	717	0	0.0	0.5
20140930	4400871	11790240	706	0	-0.1	0.5
20140930	4400872	60202920	718	0	-0.4	0.4
20140930	4400874	60213460	612	0	0.1	0.5
20140930	4400876	60648350	715	0	0.5	0.4
20140930	4400877	60526170	719	0	-0.0	0.3
20140930	4400878	60528170	719	0	-0.0	0.4
20140930	4400879	60554620	719	0	-0.1	0.5
20140930	4400880	60556880	719	0	-0.2	0.4

E-SURFMAR DB Monthly Report September 2014

20140930	4400885	60218780	719	0	-0.2	0.4
20140930	4400887	60251440	719	0	-0.0	0.4
20140930	4400888	60359010	719	0	-0.0	0.3
20140930	4400889	60202320	719	0	-0.1	0.3
20140930	4400890	12000230	712	0	-0.0	0.6
20140930	4400891	12007220	668	0	0.0	0.3
20140930	4400892	60018400	639	0	-0.1	0.5
20140930	6200514	60203700	718	0	-0.1	0.5
20140930	6200516	11475100	718	0	0.2	0.4
20140930	6200536	11599570	718	0	-0.2	0.6
20140930	6200537	11791240	712	0	-0.2	0.5
20140930	6200538	11460700	718	0	0.0	0.6
20140930	6200539	60891140	535	0	0.2	0.5
20140930	6200551	60897120	535	0	0.0	0.6
20140930	6200553	11165650	718	0	-0.0	0.6
20140930	6200680	11166640	718	0	-0.4	0.6
20140930	6200681	11168640	718	0	-0.1	0.4
20140930	6200687	11349100	718	0	-0.2	0.4
20140930	6200695	60408990	718	0	0.2	0.4
20140930	6200713	11246980	703	0	-0.1	0.3
20140930	6200714	11240980	711	0	-0.1	0.3
20140930	6200729	60207600	718	0	-0.0	0.5
20140930	6200940	60203850	719	0	0.1	0.3
20140930	6200941	60207590	719	0	-0.0	0.3
20140930	6300639	11471050	718	0	-0.4	0.4
20140930	6300640	60172710	718	0	-0.1	0.5
20140930	6400516	11473100	718	0	-0.4	0.4
20140930	6400520	11479040	718	0	-0.3	0.5
20140930	6400521	11470030	719	0	-0.2	0.4
20140930	6400522	61511870	717	0	-0.0	0.6
20140930	6400525	60175710	718	0	-0.0	0.4
20140930	6400607	11479100	718	0	-0.2	0.5
20140930	6400613	60174710	718	0	-0.1	0.6
20140930	6400614	60178700	718	5	-0.1	0.9
20140930	6400615	60173700	718	0	0.3	0.5
20140930	6400616	60178710	718	18	-0.1	1.1
20140930	6400622	60172810	718	0	-0.0	0.5
20140930	6400623	11470040	718	0	0.1	0.6
20140930	6400664	60176710	718	0	-0.1	0.5
20140930	6400665	60171710	718	0	0.2	0.5
20140930	6400666	60179710	718	0	0.2	0.5
20140930	6400667	61615060	719	0	-0.1	0.8
20140930	6400668	60177860	718	0	0.1	0.4
20140930	6400669	60177710	718	0	-0.2	0.6
20140930	6400670	61513850	703	0	-0.0	0.5
20140930	6400691	61514870	719	0	0.2	0.5
20140930	6400692	60172720	718	0	0.2	0.4
20140930	6400693	60173720	718	0	0.0	0.6
20140930	6500595	11595570	718	0	-0.5	0.5
20140930	6500596	61511850	713	0	0.2	0.6
20140930	6500597	11595650	718	0	-0.3	0.5
20140930	6500598	11792240	716	0	0.0	0.4

Air Pressure (hPa), moored buoys, September 2014

Datend	WMO	Telcom	Recvd	GE	Bias	Std
20140930	1300131		717	0	0.1	0.6
20140930	6100001		715	0	-0.2	0.5
20140930	6100002		715	1	-0.1	0.5
20140930	6100196		490	7	0.6	0.8
20140930	6100197		720	0	0.2	0.6
20140930	6100198		720	0	0.3	0.7
20140930	6100207		816	0	0.6	0.6
20140922	6100208		874	0	-1.0	0.5
20140930	6100210		1384	0	0.9	0.6
20140930	6100211		1379	0	0.4	0.6
20140930	6100213		1381	0	1.4	0.5
20140930	6100214		1318	0	0.4	0.5
20140930	6100216		1341	0	0.4	0.5
20140930	6100218		473	0	0.7	0.4
20140930	6100219		1323	0	-0.2	0.5
20140930	6100220		1212	0	0.1	0.5
20140930	6100221		1385	0	-0.2	0.6
20140930	6100280		720	0	0.5	0.6
20140930	6100281		720	0	0.4	0.7

E-SURFMAR DB Monthly Report September 2014

20140930	6100417	719	0	0.4	0.6
20140930	6100430	720	0	0.4	0.6
20140930	6101001	222	0	0.5	0.6
20140918	6101003	140	0	0.8	0.6
20140930	6101007	238	0	0.3	0.6
20140930	6101008	216	0	0.4	0.7
20140930	6200001	657	0	0.1	0.5
20140930	6200024	719	0	0.5	0.6
20140930	6200025	720	0	0.4	0.6
20140930	6200029	621	0	0.0	0.4
20140930	6200030	621	0	-0.2	0.4
20140930	6200081	663	0	0.2	0.4
20140930	6200082	720	0	0.4	0.5
20140930	6200083	719	0	0.4	0.6
20140930	6200084	720	0	0.3	0.6
20140930	6200085	720	0	0.9	0.6
20140926	6200086	44	0	0.1	0.3
20140925	6200087	572	0	-0.2	0.4
20140930	6200091	718	0	0.1	0.8
20140930	6200092	719	0	0.1	0.4
20140930	6200093	718	0	0.1	0.4
20140901	6200094	11	0	0.1	0.4
20140930	6200095	672	3	-0.0	0.8
20140930	6200105	658	0	0.1	0.4
20140930	6200163	659	1	0.2	0.4
20140916	6200191	356	0	0.8	0.4
20140930	6200192	676	0	1.0	0.5
20140930	6200442	693	0	0.3	0.4
20140930	6400045	654	0	0.2	0.4
20140930	6400046	698	0	0.2	0.5

Air Temperature (C), moored buoys, September 2014

Datend	WMO	Telcom	Recvd	GE	Bias	Std
20140930	1300131		717	0	2.4	0.7
20140930	6100001		716	0	-0.3	0.6
20140930	6100002		715	0	0.0	0.8
20140930	6100196		490	0	-0.5	0.6
20140930	6100197		719	0	0.2	0.4
20140930	6100198		720	0	-0.5	1.0
20140930	6100280		720	0	0.3	0.5
20140930	6100281		720	0	0.0	0.7
20140930	6100417		718	0	0.0	0.7
20140930	6100430		720	0	-0.1	0.5
20140930	6101001		222	0	0.1	0.7
20140930	6101007		238	0	1.9	0.5
20140930	6101008		216	0	-0.5	0.6
20140930	6200001		656	0	-0.0	0.5
20140930	6200024		719	0	0.6	0.6
20140930	6200025		720	0	-0.7	0.8
20140930	6200029		621	0	0.4	0.5
20140930	6200030		621	0	-0.1	0.7
20140930	6200081		663	0	0.1	0.3
20140930	6200082		720	0	0.0	0.7
20140930	6200083		719	0	-0.3	0.7
20140930	6200084		720	0	0.4	0.9
20140930	6200085		720	0	-0.2	0.6
20140926	6200086		44	0	0.1	0.4
20140925	6200087		573	0	-0.2	0.7
20140930	6200091		718	1	-0.0	1.4
20140930	6200092		719	0	0.1	0.4
20140930	6200093		718	0	0.4	0.5
20140901	6200094		11	0	1.8	0.5
20140930	6200095		664	0	0.0	0.6
20140930	6200105		658	0	-0.0	0.4
20140930	6200163		650	1	0.1	0.5
20140916	6200191		356	0	0.5	0.8
20140930	6200192		676	0	0.0	0.5
20140930	6200442		693	0	-0.2	0.4
20140930	6400045		654	0	0.0	0.5
20140930	6400046		698	0	-0.0	0.4
20140930	6600021		718	0	0.2	0.5
20140930	6600022		681	2	0.3	0.6
20140930	6600024		713	0	0.4	0.5

E-SURFMAR DB Monthly Report September 2014

Wind direction (deg.), moored buoys, September 2014

Datend	WMO	Telcom	Recvd	GE	Bias	Std
20140930	1300131		713	113	-1	35
20140930	6100001		715	61	-2	31
20140930	6100002		714	8	-3	24
20140930	6100196		484	28	-10	30
20140930	6100197		707	48	-8	30
20140930	6100198		713	41	-8	26
20140930	6100280		706	54	7	38
20140930	6100281		709	64	9	38
20140930	6100417		691	20	-1	27
20140930	6100430		716	36	-7	33
20140930	6101001		221	28	4	39
20140918	6101003		140	10	105	38
20140930	6101007		238	14	56	44
20140930	6101008		216	15	2	30
20140930	6200001		656	30	-4	25
20140930	6200024		688	36	9	31
20140930	6200025		716	87	10	34
20140930	6200029		621	5	2	17
20140930	6200030		430	26	12	26
20140930	6200081		663	5	-7	13
20140930	6200082		716	15	1	25
20140930	6200083		707	17	-6	26
20140930	6200084		703	18	-5	22
20140930	6200085		698	42	-3	30
20140926	6200086		43	0	9	22
20140925	6200087		194	0	-1	12
20140930	6200091		610	25	1	19
20140930	6200092		719	0	-1	16
20140930	6200093		717	3	6	17
20140930	6200095		193	0	1	14
20140930	6200105		657	8	-1	14
20140930	6200163		659	8	-4	17
20140916	6200191		356	14	-3	25
20140930	6200192		675	25	1	23
20140930	6200442		692	1	-3	15
20140930	6400045		654	5	-7	16
20140930	6400046		698	3	2	17
20140930	6600021		717	3	1	13
20140930	6600022		681	6	-11	19
20140930	6600024		701	62	-12	30

Wind speed rate, moored buoys, September 2014

Datend	WMO	Telcom	Recvd	GE	Rate	Err
20140930	1300131		713	0	1.5	1.9
20140930	6100001		715	1	1.3	1.6
20140930	6100002		714	2	1.2	1.5
20140930	6100196		484	0	1.1	1.7
20140930	6100197		707	0	1.3	1.4
20140930	6100198		713	0	1.0	1.7
20140930	6100280		706	0	1.3	1.2
20140930	6100281		709	0	1.5	1.6
20140930	6100417		691	0	1.0	1.5
20140930	6100430		716	0	1.5	1.3
20140930	6101001		221	1	1.6	2.1
20140918	6101003		140	0	0.1	5.8
20140930	6101007		238	0	0.0	0.0
20140930	6101008		216	0	1.1	1.6
20140930	6200001		656	1	1.4	1.9
20140930	6200024		688	0	1.1	1.5
20140930	6200025		716	1	1.2	2.7
20140930	6200029		621	0	1.1	1.1
20140930	6200030		430	0	0.9	1.7
20140930	6200081		663	0	1.0	1.1
20140930	6200082		716	0	1.0	1.5
20140930	6200083		707	0	0.9	1.5
20140930	6200084		703	0	1.0	1.7
20140930	6200085		698	0	0.9	1.3
20140926	6200086		43	0	1.0	1.3
20140925	6200087		194	0	1.1	1.2

E-SURFMAR DB Monthly Report September 2014

20140930	6200091	610	0	1.2	1.6
20140930	6200092	719	0	1.0	1.2
20140930	6200093	717	0	1.0	1.1
20140930	6200095	193	0	1.0	1.2
20140930	6200105	657	0	1.0	1.2
20140930	6200163	659	0	1.1	1.1
20140916	6200191	356	0	1.2	1.7
20140930	6200192	675	0	1.2	1.4
20140930	6200442	692	0	1.0	1.3
20140930	6400045	654	0	1.0	1.2
20140930	6400046	698	0	1.0	1.3
20140930	6600021	717	0	1.1	1.2
20140930	6600022	681	1	1.3	1.2
20140930	6600024	701	38	1.1	1.0

Comments on QC statistics :

Air pressure

1. DBI buoy WMO **4400850** reported a few wrong pressure values during the month but they came back fine later.
2. Metocean buoy WMO **6400616**, ashore in Iceland, reported wrong pressure values before the GTS transmission was stopped on October 2nd.
3. Italian moored buoy WMO **6100213** continues to report systematic biased pressure values (~1.5 hPa).

Air temperature

4. Air temperature measurements, carried out by Spanish buoy WMO **1300131**, (Canary Islands) presented an increasing bias in September when compared to French analysis model outputs (2.4°C in average during the month).
5. Air temperature measurements, carried out by Greek Poseidon buoy WMO **6101007**, continue to be systematically biased for about 2.0 °C.
6. Irish moored buoy M5 (WMO **6200094**) reported a few wrong temperature data at the beginning of the month, before the GTS data transmission was stopped for this parameter.

Wind

7. Greek moored buoys WMO **6101003** and **6101007** continued to report abnormal calm winds onto the GTS.
8. It seems that German buoy Darsser Schwell (WMO **6300024**) reported a few dubious wind data in September.

Monthly QC statistics and other data quality control tools are available on line at :

<http://www.meteo.shom.fr/qctools/>

The working area of the E-SURFMAR website is open at <http://esurfmar.meteo.fr/wikisurf-wa/> . Ask the E-SURFMAR Programme Manager Pierre.Blouch@meteo.fr for the password in case you forgot it. Graphs of system performances may be displayed/downloaded at http://esurfmar.meteo.fr/doc/r/surfmar/others/e-surfmar_monitoring.pdf.