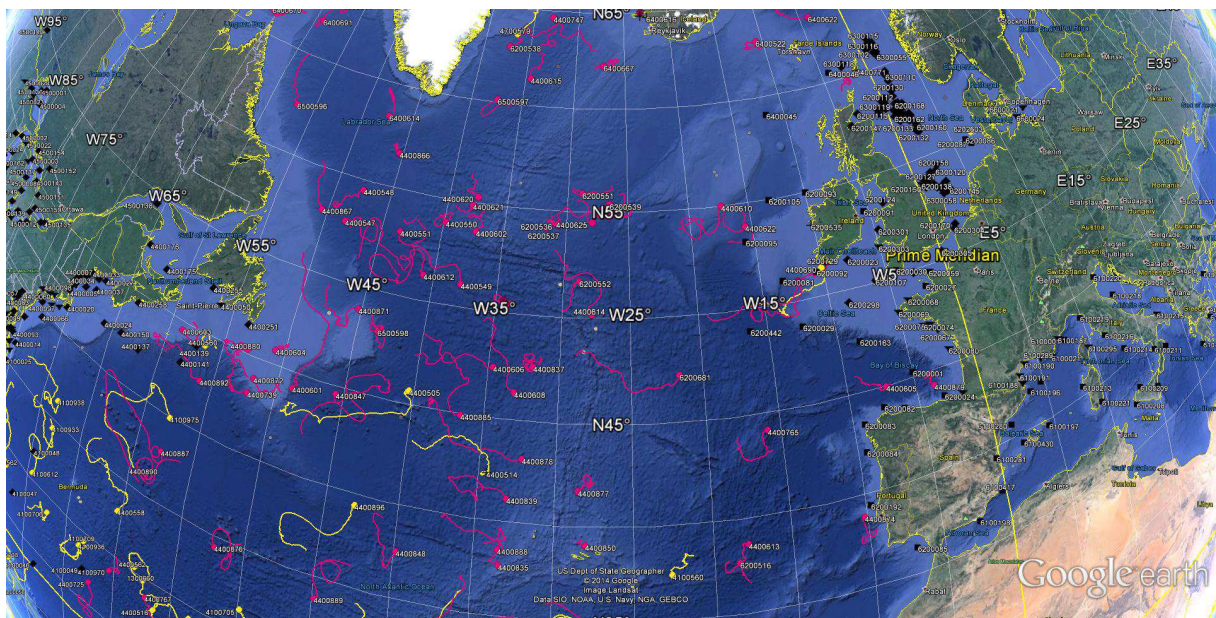


DATA BUOY MONTHLY REPORT

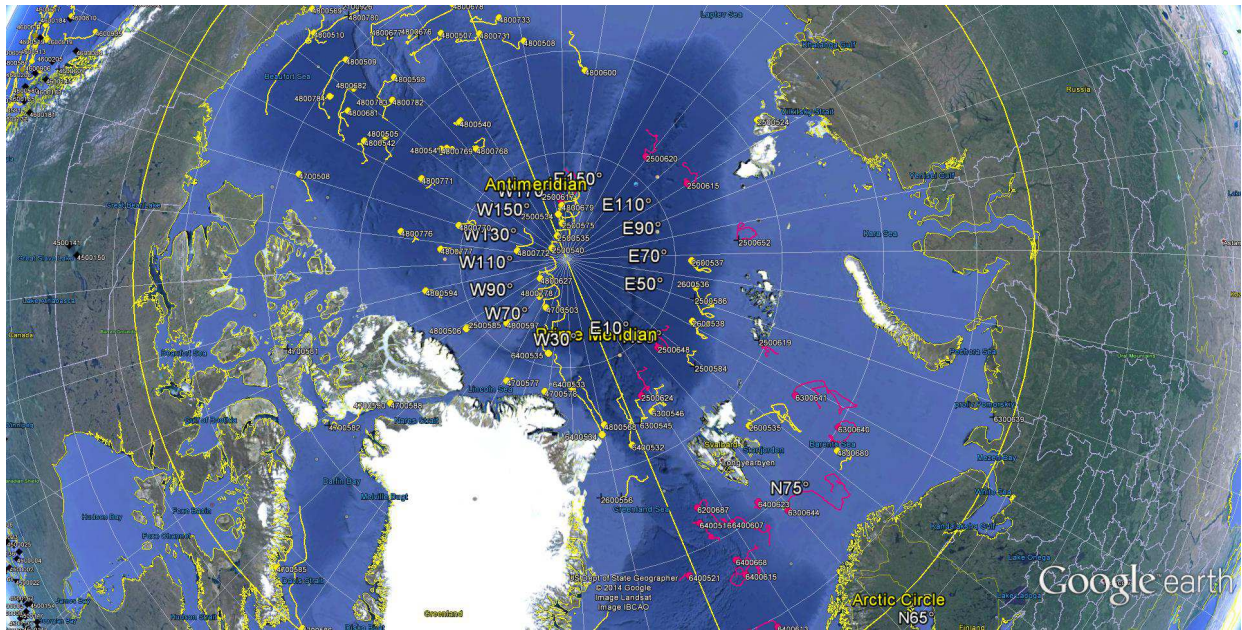
October 2014



*October 2014 : Operating data buoys in the North Atlantic
Drifting buoy trajectories : E-SURFMAR (red), others (yellow)
Moored buoy positions (black)*

*Most recent trajectories may be seen at:
http://www.meteo.shom.fr/cartographie/data/kml/MeteoFrance_buoys_map_15.kmz*

E-SURFMAR DB Monthly Report October 2014



October 2014
Drifting buoy trajectories in Arctic Ocean and adjacent seas : E-SURFMAR (red), others (yellow)

DRIFTING BUOYS

Network status

By the end of October, **112 Drifting buoys**, reporting air pressure onto the GTS, were in operation in the frame of E-SURFMAR. Out of these, 78 were E-SURFMAR funded Iridium SVP-Bs, including 6 in the Arctic and 12 HRSST-2 buoys. The remaining buoys were: 34 Iridium drifters owned by NOAA and upgraded with barometers by E-SURFMAR.

Information about the availability of buoys for future deployments may be get from the E-SURFMAR wikisite (working area) at: http://esurfmar.meteo.fr/wikisurf-wa/index.php/Availability_of_drifting_buoys

Besides E-SURFMAR buoys, 63 drifting buoys were reporting at least air pressure observations from the EUMETNET area of interest. Out of these, 3 were reporting Sea Surface Salinity, some in the frame of Spurs/Strasse campaign (validation of SMOS and Aquarius remote SSS measurements).

Drifting buoys - New deployments

WMO	Telcom	Typ	Ow	Dep_Date	DepLat	DepLon	From	Comment
4400603	11793230	MSB	E2	20141007	45.2	-58.0	Halifax	Atlantic Conveyor
4400604	11794240	MSB	E2	20141008	46.0	-50.1	Halifax	Atlantic Conveyor
4400606	11162640	MSB	EU	20141009	48.5	-40.1	Halifax	Atlantic Conveyor
4400608	11093800	MSB	E2	20141010	49.5	-35.6	Halifax	Atlantic Conveyor
6200552	11797240	MSB	E2	20141010	50.4	-30.0	Halifax	Atlantic Conveyor
6300644	61766070	MSB	EU	20141002	73.2	26.7	Helsingborg	Oden

Operating drifting buoys in North Atlantic by the end of the month

WMO	Telcom	Typ	Ow	nobs	Wi	AT	AP	dP	ST	Wa	Ws	Dr	Sb	U	SS	O	Start_end	Lat	Lon	Age
2500615	61660360	MSB	EU	727	-	-	X	X	X	-	-	X	-	-	-	T	0110-3110	83.42	100.39	108
2500616	61762070	MSB	EU	727	-	-	X	X	X	-	-	X	-	-	-	T	0110-3110	74.57	162.12	87
2500617	61767070	MSB	EU	727	-	-	X	X	X	-	-	X	-	-	-	T	0110-3110	87.24	163.76	41
2500620	61760090	MSB	EU	727	-	-	X	X	X	-	-	X	-	-	-	T	0110-3110	83.98	120.68	35
2500624	60247420	MSB	EU	727	-	-	X	X	X	-	-	X	-	-	-	T	0110-3110	82.84	6.71	427
2500648	60370080	MSB	EU	727	-	-	X	X	X	-	-	X	-	-	-	T	0110-3110	84.17	23.93	422
4100969	60213780	PSB	UP	630	-	-	X	X	X	-	-	X	-	-	-	T	0110-3110	27.21	-24.59	450
4100970	60213790	PSB	UP	729	-	-	X	X	X	-	-	X	-	-	-	T	0110-3110	28.95	-60.31	449
4100971	60215900	PSB	UP	728	-	-	X	X	X	-	-	X	-	-	-	T	0110-3110	31.73	-30.37	449
4100972	60217780	PSB	UP	699	-	-	X	X	X	-	-	X	-	-	-	T	0110-3110	26.41	-33.81	449
4400546	11160640	MSB	EU	728	-	-	X	X	X	-	-	X	-	-	-	T	0110-3110	33.57	-23.25	591
4400547	60173710	MSB	EU	727	-	-	X	X	X	-	-	X	-	-	-	T	0110-3110	52.83	-48.21	82
4400548	11799230	MSB	E2	724	-	-	X	X	X	-	-	X	-	-	-	T	0110-3110	54.51	-47.44	82
4400549	60896130	MSB	EU	728	-	-	X	X	X	-	-	X	-	-	-	T	0110-3110	51.09	-37.78	55
4400550	60894140	MSB	EU	728	-	-	X	X	X	-	-	X	-	-	-	T	0110-3110	53.88	-39.81	55
4400551	60892140	MSB	EU	728	-	-	X	X	X	-	-	X	-	-	-	T	0110-3110	53.01	-43.38	55
4400601	60890150	MSB	EU	728	-	-	X	X	X	-	-	X	-	-	-	T	0110-3110	44.24	-48.75	54
4400602	11468700	MSB	UP	727	-	-	X	X	X	-	-	X	-	-	-	T	0110-3110	53.66	-37.24	589
4400603	11793230	MSB	E2	546	-	-	X	X	X	-	-	X	-	-	-	T	0810-3110	44.57	-58.71	25
4400604	11794240	MSB	E2	526	-	-	X	X	X	-	-	X	-	-	-	T	0910-3110	45.73	-50.72	24
4400605	11473110	MSB	EU	727	-	-	X	X	X	-	-	X	-	-	-	T	0110-3110	45.00	-7.21	539
4400606	11162640	MSB	EU	499	-	-	X	X	X	-	-	X	-	-	-	T	1010-3110	47.43	-34.63	23
4400608	11093800	MSB	E2	494	-	-	X	X	X	-	-	X	-	-	-	T	1010-3110	46.33	-33.02	22
4400610	61517860	MSB	EU	728	-	-	X	X	X	-	-	X	-	-	-	T	0110-3110	55.00	-17.31	326
4400612	61511880	MSB	EU	728	-	-	X	X	X	-	-	X	-	-	-	T	0110-3110	51.23	-40.78	314
4400613	11475040	MSB	EU	727	-	-	X	X	X	-	-	X	-	-	-	T	0110-3110	38.70	-17.86	605
4400614	61661340	MSB	EU	669	-	-	X	X	X	-	-	X	-	-	-	T	0110-3110	50.19	-27.81	185
4400615	61666340	MSB	EU	729	-	-	X	X	X	-	-	X	-	-	-	T	0110-3110	61.37	-34.45	184
4400620	61667370	MSB	EU	728	-	-	X	X	X	-	-	X	-	-	-	T	0110-3110	55.30	-37.51	184
4400621	61519840	MSB	EU	710	-	-	X	X	X	-	-	X	-	-	-	T	0110-3110	54.89	-37.84	265

E-SURFMAR DB Monthly Report October 2014

4400622	61668320	MSB	EU	729	-	-	X	X	X	-	-	X	-	-	-	T	0110-3110	53.90	-15.57	183
4400624	11341110	YSB	EU	719	-	-	X	X	X	-	-	X	-	-	-	T	0110-3110	31.86	-14.31	690
4400625	61668340	MSB	EU	718	-	-	X	X	X	-	-	X	-	-	-	T	0110-3110	54.50	-27.92	183
4400725	11027170	MSB	EU	727	-	-	X	X	X	-	-	X	-	-	-	T	0110-3110	26.93	-62.18	861
4400739	61516840	MSB	EU	728	-	-	X	X	X	-	-	X	-	-	-	T	0110-3110	43.15	-52.04	151
4400740	11883820	PSB	UP	677	-	-	X	X	X	-	-	X	-	-	-	T	0110-3110	26.50	-41.81	846
4400747	61610060	MSB	EU	706	-	-	X	X	X	-	-	X	-	-	-	T	0110-3110	64.65	-32.93	311
4400765	11685410	MSB	EU	726	-	-	X	X	X	-	-	X	-	-	-	T	0110-3110	44.19	-15.95	582
4400767	11919510	MSB	EU	727	-	-	X	X	X	-	-	X	-	-	-	T	0110-3110	28.87	-57.04	1009
4400773	60211790	PSB	UP	622	-	-	X	X	X	-	-	X	-	-	-	T	0110-3110	22.98	-31.96	475
4400835	60218770	PSB	UP	731	-	-	X	X	X	-	-	X	-	-	-	T	0110-3110	37.77	-33.32	242
4400836	60218680	PSB	UP	731	-	-	X	X	X	-	-	X	-	-	-	T	0110-3110	50.62	-34.40	242
4400837	60209490	PSB	UP	731	-	-	X	X	X	-	-	X	-	-	-	T	0110-3110	47.61	-31.83	242
4400839	60205090	PSB	UP	731	-	-	X	X	X	-	-	X	-	-	-	T	0110-3110	41.19	-33.05	242
4400840	60208710	PSB	UP	730	-	-	X	X	X	-	-	X	-	-	-	T	0110-3110	50.94	-12.22	241
4400846	60441290	DSB	UP	727	-	-	X	X	X	-	-	X	-	-	-	T	0110-3110	34.10	-30.66	279
4400847	60442280	DSB	UP	728	-	-	X	X	X	-	-	X	-	-	-	T	0110-3110	44.64	-45.48	279
4400848	60448280	DSB	UP	727	-	-	X	X	X	-	-	X	-	-	-	T	0110-3110	37.60	-39.81	278
4400863	60211690	PSB	UP	729	-	-	X	X	X	-	-	X	-	-	-	T	0110-3110	30.70	-29.72	473
4400866	11793240	MSB	E2	727	-	-	X	X	X	-	-	X	-	-	-	T	0110-3110	56.68	-45.28	133
4400867	11593590	MSB	EU	727	-	-	X	X	X	-	-	X	-	-	-	T	0110-3110	53.03	-50.50	131
4400868	11794230	MSB	E2	726	-	-	X	X	X	-	-	X	-	-	-	T	0110-3110	27.82	-46.50	542
4400871	11790240	MSB	E2	727	-	-	X	X	X	-	-	X	-	-	-	T	0110-3110	48.94	-45.19	127
4400872	60202920	MSB	EU	727	-	-	X	X	X	-	-	X	-	-	-	T	0110-3110	43.96	-51.84	127
4400874	60213460	PSB	UP	729	-	-	X	X	X	-	-	X	-	-	-	T	0110-3110	38.89	-10.22	473
4400876	60648350	DSB	UP	727	-	-	X	X	X	-	-	X	-	-	-	T	0110-3110	34.42	-52.13	279
4400877	60526170	PSB	UP	731	-	-	X	X	X	-	-	X	-	-	-	T	0110-3110	41.78	-28.51	270
4400878	60528170	PSB	UP	731	-	-	X	X	X	-	-	X	-	-	-	T	0110-3110	43.19	-32.20	270
4400879	60554620	PSB	UP	731	-	-	X	X	X	-	-	X	-	-	-	T	0110-3110	44.30	-3.66	269
4400880	60656880	PSB	UP	731	-	-	X	X	X	-	-	X	-	-	-	T	0110-3110	45.24	-52.91	271
4400885	60218780	PSB	UP	730	-	-	X	X	X	-	-	X	-	-	-	T	0110-3110	44.96	-36.55	155
4400887	60251440	PSB	UP	731	-	-	X	X	X	-	-	X	-	-	-	T	0110-3110	37.98	-57.63	157
4400888	60359010	PSB	UP	730	-	-	X	X	X	-	-	X	-	-	-	T	0110-3110	38.58	-33.43	155
4400889	60202320	PSB	UP	730	-	-	X	X	X	-	-	X	-	-	-	T	0110-3110	33.82	-44.79	156
4400890	12000230	PSB	UP	730	-	-	X	X	X	-	-	X	-	-	-	T	0110-3110	36.26	-58.47	155
4400891	12007220	PSB	UP	666	-	-	X	X	X	-	-	X	-	-	-	T	0110-3110	32.97	-29.93	153
4400892	60018400	PSB	UP	719	-	-	X	X	X	-	-	X	-	-	-	T	0110-3110	42.61	-56.02	154
6200514	60203700	MSB	E2	727	-	-	X	X	X	-	-	X	-	-	-	T	0110-3110	66.15	-8.36	617
6200516	11475100	MSB	EU	727	-	-	X	X	X	-	-	X	-	-	-	T	0110-3110	37.78	-18.46	543
6200536	11599570	MSB	EU	722	-	-	X	X	X	-	-	X	-	-	-	T	0110-3110	54.36	-30.75	145
6200537	11791240	MSB	E2	726	-	-	X	X	X	-	-	X	-	-	-	T	0110-3110	54.17	-31.61	145
6200538	11460700	MSB	UP	727	-	-	X	X	X	-	-	X	-	-	-	T	0110-3110	62.91	-37.16	144
6200539	60891140	MSB	EU	728	-	-	X	X	X	-	-	X	-	-	-	T	0110-3110	55.37	-26.51	57
6200551	60897120	MSB	EU	728	-	-	X	X	X	-	-	X	-	-	-	T	0110-3110	55.87	-28.79	57
6200552	11797240	MSB	E2	489	-	-	X	X	X	-	-	X	-	-	-	T	1010-3110	51.72	-28.79	22
6200553	11165650	MSB	EU	727	-	-	X	X	X	-	-	X	-	-	-	T	0110-3110	69.78	-2.83	587
6200681	11168640	MSB	EU	727	-	-	X	X	X	-	-	X	-	-	-	T	0110-3110	47.26	-21.66	715
6200687	11349100	YSB	EU	728	-	-	X	X	X	-	-	X	-	-	-	T	0110-3110	76.92	5.62	694
6200695	60408990	MSB	E2	727	-	-	X	X	X	-	-	X	-	-	-	T	0110-3110	28.19	-22.66	543
6200713	11246980	YSB	EU	719	-	-	X	X	X	-	-	X	-	-	-	T	0110-3110	25.84	-44.57	689
6200714	11240980	YSB	EU	691	-	-	X	X	X	-	-	X	-	-	-	T	0110-3110	23.54	-42.54	686
6200729	60207600	PSB	UP	707	-	-	X	X	X	-	-	X	-	-	-	T	0110-3010	51.47	-9.78	239
6200940	60203850	PSB	UP	705	-	-	X	X	X	-	-	X	-	-	-	T	0110-3110	32.40	-27.30	152
6200941	61516840	PSB	UP	730	-	-	X	X	X	-	-	X	-	-	-	T	0110-3110	32.86	-37.04	152
6300640	60172710	MSB	EU	727	-	-	X	X	X	-	-	X	-	-	-	T	0110-3110	75.01	36.38	444
6300641	61665210	MSB	EU	233	-	-	X	X	X	-	-	X	-	-	-	T	0110-3110	77.62	37.32	31
6300644	61766070	MSB	EU	695	-	-	X	X	X	-	-	X	-	-	-	T	0210-3110	74.25	19.36	30
6400516	11473100	MSB	EU	727	-	-	X	X	X	-	-	X	-	-	-	T	0110-3110	76.19	4.59	752
6400520	11479040	MSB	EU	727	-	-	X	X	X	-	-	X	-	-	-	T	0110-3110	70.51	-3.85	539
6400521	11470030	MSB	EU	727	-	-	X	X	X	-	-	X	-	-	-	T	0110-3110	73.99	-1.18	537
6400522	61511870	MSB	EU	652	-	-	X	X	X	-	-	X	-	-	-	T	0110-3110	62.84	-10.79	70
6400525	60175710	MSB	EU	727	-	-	X	X	X	-	-	X	-	-	-	T	0110-3110	68.63	-4.26	441
6400607	11479100	MSB	EU	727	-	-	X	X	X	-	-	X	-	-	-	T	0110-3110	75.42	9.98	723
6400613	60174710	MSB	EU	727	-	-	X	X	X	-	-	X	-	-	-	T	0110-3110	69.52	7.58	426
6400614	60178700	MSB	EU	727	-	-	X	X	X	-	-	X	-	-	-	T	0110-3110	58.33	-47.36	422
6400615	60173700	MSB	EU	727	-	-	X	X	X	-	-	X	-	-	-	T	0110-3110	72.82	7.35	357
6400622	60172810	MSB	EU	727	-	-	X	X	X	-	-	X	-	-	-	T	0110-3110	63.52	-3.99	442
6400623	11470040	MSB	EU	727	-	-	X	X	X	-	-	X	-	-	-	T	0110-3110	75.53	16.19	538
6400664	60176710	MSB	EU	727	-	-	X	X	X	-	-	X	-	-	-	T	0110-3110	66.95	-12.88	340
6400665	60171710	MSB	EU	727	-	-	X	X	X	-	-	X	-	-	-	T	0110-3110	69.73	-4.46	338
6400666	60179710	MSB	EU	727	-	-	X	X	X	-	-	X	-	-	-	T	0110-3110	69.97	3.76	338
6400667	61615060	MSB	EU	704	-	-	X	X	X	-	-	X	-	-	-	T	0110-3110	62.19	-27.16	310
6400668	60177860	MSB	EU	727	-	-	X	X	X	-	-	X	-	-	-	T	0110-3110	73.71	7.17	314
6400669	60177710	MSB	EU	727	-	-	X	X	X	-	-	X	-	-	-	T	0110-3110	65.00	-23.09	310
6400670	61513850	MSB	EU	728	-	-	X	X	X	-	-	X	-	-	-	T	0110-3110	61.27	-65.75	267
6400691	61514870	MSB	EU	728	-	-	X	X	X	-	-	X	-	-	-	T	0110-3110	61.86	-58.90	266
6400692	60172720	MSB	EU	727	-	-	X	X	X	-	-	X	-	-	-	T	0110-3110	65.31	1.98	253
6500595	11595570	MSB	EU	727	-	-	X	X	X	-	-	X	-	-	-	T	0110-3110	63.06	-57.74	137

E-SURFMAR DB Monthly Report October 2014

6500596	61511850	MSB	EU	728	-	-	X	X	X	-	-	X	-	-	-	T	0110-3110	57.43	-56.83	135
6500597	11595650	MSB	EU	727	-	-	X	X	X	-	-	X	-	-	-	T	0110-3110	60.14	-37.37	141
6500598	11792240	MSB	E2	722	-	-	X	X	X	-	-	X	-	-	-	T	0110-3110	48.14	-43.39	129

Drifting buoys which ceased to be operational

WMO	Telcom	Typ	Ow	End_Date	Lat	Lon	Age	Cause
2500619	60276270	MSB	EU	20141026	80.7	45.2	429	Unknown
2500652	60176700	MSB	EU	20141022	82.0	74.4	420	Unknown
2600556	11549080	MSB	EU	20141002	78.8	-14.1	740	Faded (battery empty)
4400771	60507000	MSB	E2	20141027	60.2	-1.3	613	Ashore in Shetland Is.
4400850	60648340	DSB	UP	20141024	39.1	-28.0	273	Ashore in Açores
6200680	11166640	MSB	EU	20141023	67.8	-7.0	706	Faded (battery empty)
6400616	60178710	MSB	EU	20141007	64.7	-22.4	332	Ashore in Iceland
6400693	60173720	MSB	EU	20141029	64.8	-23.1	245	Ashore in Iceland

Non-operating drifting buoys reporting GTS data

WMO	Telcom	Typ	Ow	nobs	Wi	AT	AP	dP	ST	Wa	Ws	Dr	Sb	U	SS	O	Start_end	Lat	Lon	Age
-----	--------	-----	----	------	----	----	----	----	----	----	----	----	----	---	----	---	-----------	-----	-----	-----

Non-operating drifting buoys which ceased to emit

WMO	Telcom	Typ	Ow	End_Date	Lat	Lon	Age	Cause
-----	--------	-----	----	----------	-----	-----	-----	-------

Other operating drifting buoys inside the EUMETNET by the end of the month

WMO	Telcom	Typ	Ow	nobs	Wi	AT	AP	dP	ST	Wa	Ws	Dr	Sb	U	SS	O	Start_end	Lat	Lon
1300569				674	-	-	X	-	X	-	-	X	-	-	-	L	0110-3110	33.67	-29.74
1300570	116474	AOML		724	-	-	X	-	X	-	-	X	-	-	-	L	0110-3110	33.91	-29.90
1300572				713	-	-	X	X	X	-	-	X	-	-	-	L	0110-3110	33.54	-29.59
1300590				87	-	-	X	X	X	-	-	X	-	-	-	L	2710-3110	34.07	-29.64
1300633	109491	AOML		700	-	-	X	X	X	-	-	X	-	-	-	L	0110-3110	33.36	-34.01
1300659	11910180	UKMO		727	-	-	X	X	X	-	-	X	-	-	-	T	0110-3110	25.12	-45.65
1300660	11022040	UKMO		727	-	-	X	X	X	-	-	X	-	-	-	T	0110-3110	29.90	-57.32
1300662	11098800	UKMO		725	-	-	X	X	X	-	-	X	-	-	-	T	0110-3110	23.90	-37.34
1300664	11090810	UKMO		727	-	-	X	X	X	-	-	X	-	-	-	T	0110-3110	23.89	-42.77
1300668	60897010	UKMO		727	-	-	X	X	-	-	-	X	-	-	-	T	0110-3110	3.32	7.00
1500549	60794980	UKMO		704	-	-	X	X	X	-	-	X	-	-	-	T	0110-3110	2.60	-27.11
2100942				497	-	-	X	X	X	-	-	X	-	-	-	L	1010-3110	32.51	-28.46
2500585	61501340	AOML		704	-	-	X	X	X	-	-	X	-	-	-	T	0110-3010	85.95	-65.63
2600535	971540	PSC		738	-	-	X	X	X	-	-	-	-	-	-	O	0110-3110	78.56	25.66
3100717	61614160	CMM		482	-	-	X	X	X	-	-	X	-	-	-	T	1110-3110	14.09	-47.47
3100862	61213570	LOCE	1458	-	-	-	X	X	X	-	-	X	-	-	X	T	0110-3110	2.71	-2.26
3100863	61611040	CMM	499	-	-	-	X	X	X	-	-	X	-	-	-	T	1010-3110	18.09	-44.93
4100560	114550	AOML		724	-	-	X	-	-	-	-	X	-	-	-	L	0110-3110	37.50	-22.66
4100564	109221	AOML		714	-	-	X	-	X	-	-	X	-	-	-	L	0110-3110	30.84	-40.33
4100596	11473050	EUME		727	-	-	X	X	X	-	-	X	-	-	-	T	0110-3110	19.33	-56.26
4100597	61512840	AOML		728	-	-	X	X	X	-	-	X	-	-	-	T	0110-3110	20.05	-47.61
4100598	61610040	AOML		728	-	-	X	X	X	-	-	X	-	-	-	T	0110-3110	22.40	-46.17
4100599	61615070	AOML		728	-	-	X	X	X	-	-	X	-	-	-	T	0110-3110	14.67	-56.15
4100600	61618040	AOML		728	-	-	X	X	X	-	-	X	-	-	-	T	0110-3110	12.81	-51.69
4100612	123247	AOML		650	-	-	X	X	X	-	-	X	-	-	-	L	0110-3110	30.57	-69.29
4100632	11474050	EUME		727	-	-	X	X	X	-	-	X	-	-	-	T	0110-3110	23.77	-61.53
4100705	11596570	AOML		727	-	-	X	X	X	-	-	X	-	-	-	T	0110-3110	31.45	-49.78
4100706	11595580	AOML		727	-	-	X	X	X	-	-	X	-	-	-	T	0110-3110	29.03	-67.07
4100709	11598570	AOML		727	-	-	X	X	X	-	-	X	-	-	-	T	0110-3110	29.50	-62.96
4100711	11477030	EUME		727	-	-	X	X	X	-	-	X	-	-	-	T	0110-3110	29.24	-53.44
4100737	60342390	CMM	599	-	-	-	X	X	X	-	-	X	-	-	X	T	0110-3110	26.25	-52.71
4100800	60547830	CMM	726	-	-	-	X	X	X	-	-	X	-	-	X	T	0110-3110	23.92	-44.36
4100933	101721	AOML		515	-	-	X	X	X	-	-	X	-	-	-	L	0910-3110	34.55	-67.98
4100936	109488	AOML		629	-	-	X	X	X	-	-	X	-	-	-	L	0110-3110	28.95	-63.40
4100938	109437	AOML		601	-	-	X	X	X	-	-	X	-	-	-	L	0510-3110	36.32	-68.10
4100975	109439	AOML		691	-	-	X	X	X	-	-	X	-	-	-	L	0110-3110	39.98	-57.56

E-SURFMAR DB Monthly Report October 2014

4400505	98087	ICEP	1561	-	-	X	X	X	-	-	-	-	-	-	L	0110-3110	45.68	-40.32
4400514	126483	AOML	700	-	-	X	X	X	-	-	X	-	-	-	L	0110-3010	42.36	-34.46
4400516	114599	AOML	546	-	-	X	X	X	-	-	X	-	-	-	L	0110-3110	28.38	-56.30
4400554	126479	AOML	693	-	-	X	X	X	-	-	X	-	-	-	L	0110-3110	30.31	-38.93
4400558	123286	AOML	723	-	-	X	X	X	-	-	X	-	-	-	L	0110-3110	33.11	-60.25
4400560	126480	AOML	725	-	-	X	X	X	-	-	X	-	-	-	L	0110-3110	44.44	-56.41
4400562	126482	AOML	713	-	-	X	X	X	-	-	X	-	-	-	L	0110-3110	30.42	-58.13
4400690	11248370	EC	740	-	-	X	X	X	-	-	X	-	-	-	O	0110-3110	51.34	-10.14
4400896	109438	AOML	706	-	-	X	X	X	-	-	X	-	-	-	L	0110-3110	39.46	-42.85
4700503			729	-	-	X	X	X	-	-	-	-	-	-	L	0110-3110	87.58	-44.71
4700577	11096790	AWI	741	-	X	X	-	-	-	-	-	-	-	-	O	0110-3110	83.75	-48.44
4700578	11985170	EC/M	739	-	-	X	X	-	-	-	-	-	-	-	O	0110-3110	83.83	-31.49
4700579	11097780	EC/M	742	-	-	X	X	X	-	-	-	-	-	-	O	0110-3110	63.62	-36.66
4700585	11541430	EC	739	-	-	X	X	X	-	-	X	-	-	-	O	0110-3110	68.53	-66.82
4700586	11541440	EC	723	-	-	X	X	X	-	-	X	-	-	-	O	0110-3110	66.75	-59.22
4800568	61363210	PSC	739	-	-	X	X	X	-	-	-	-	-	-	O	0110-3110	82.18	-9.26
4800597	100009	PSC	629	X	X	X	-	-	-	-	X	-	-	-	O	0110-3110	85.97	-65.22
4800680	60233160	APL	577	-	-	X	X	X	-	-	X	-	-	-	T	0610-3110	74.41	32.81
4800778	60894080	EC	557	-	-	X	X	-	-	-	-	-	-	-	O	0810-3110	87.89	-58.31
4800779	60890090	EC	738	-	-	X	X	S	-	-	-	-	-	-	O	0110-3110	86.63	-30.76
6202603			361	X	X	X	X	-	-	-	-	-	X	-	O	1510-3110	55.20	7.20
6202604			297	X	-	-	-	-	-	-	-	-	-	-	O	1510-3110	54.00	6.60
6300546	61361200	PSC	738	-	-	X	X	X	-	-	-	-	-	-	O	0110-3110	81.97	7.28
6400532			728	-	-	X	X	X	-	-	-	-	-	-	L	0110-3110	80.91	-2.68
6400533			729	-	-	X	X	X	-	-	-	-	-	-	L	0110-3110	84.10	-19.79
6400534			732	-	-	X	X	X	-	-	-	-	-	-	L	0110-3110	81.75	-10.69
6400535			729	-	-	X	X	S	-	-	-	-	-	-	L	0110-3110	85.60	-32.95

----- Abbreviations -----

WMO : WMO id.
 Argos : Argos id.
 Typ : Buoy type
 - first character : Manufacturer (C = ConMar , M = Metocean, P = Pacific Gyre
 T = Technocean, Y = Marlin-Yug...)
 - second character : Main type (F = FGGE, I = ICEB, S = SVP)
 - third character : Sub type (B = barometer buoy, W = Wind buoy,
 S = Salinity buoy)

Ow : Buoy owner (country code or EU for EUCOS, E2 for HRSST-2 buoys, UP for upgraded buoys)
 Owner : Buoy owner for non EUCOS buoys
 Nobs : number of GTS reports received at Meteo-France
 Parameters (X = OK, S = stopped, - = not measured) :
 Wi : Wind
 AT : Air Temperature
 AP : Air Pressure
 dP : Air pressure tendency
 ST : Sea surface Temperature
 Wa : Wave period and height
 Ws : Wave spectra
 Dr : Drogue presence
 Sb : Subsurface temperature
 U : Relative humidity
 SS : Sea surface Salinity

O : Origin of the reports (T = Argos Toulouse, L = Argos Largo, O = Other)
 Start_end : first and last dates of the month for which GTS data were received at Meteo-France
 Lat : Latitude of the latest position
 Lon : Longitude of the latest position
 Age : Age of the buoy (days)

DepDate : Date of deployment
 DepLat : Latitude of deployment
 Dep Lon : Longitude of Deployment
 From : Harbour of departure

Definition : An operating drifting buoy is a buoy providing at least air pressure or wind (direction and velocity) data.

MOORED BUOYS

Former EGOS stations (K-pattern and Hydrosphere)

WMO	Name	nobs	Wi	AT	AP	dP	ST	Wa	Ws	Dr	Sb	U	SS	O	Start_end	Lat	Lon
6100001	Cote d'Azur	744	X	X	X	X	X	X	X	-	-	X	-	T	0110-3110	43.40	7.80
6100002	Lion	739	X	X	X	X	X	X	X	-	-	X	-	T	0110-3110	42.10	4.70
6200001	Gascogne	744	X	X	X	X	X	X	-	-	X	-	O	0110-3110	45.30	-5.00	
6200029	K1	663	X	X	X	-	X	X	-	-	X	-	O	0110-3110	48.70	-12.50	
6200081	K2	744	X	X	X	X	X	X	-	-	X	-	O	0110-3110	51.00	-13.20	
6200090	M1	-	-	-	-	-	-	-	-	-	-	-	-	-	53.10	-11.20	
6200091	M2	742	X	X	X	-	X	X	-	-	X	-	O	0110-3110	53.50	-5.40	
6200092	M3	742	X	X	X	-	X	X	-	-	X	-	O	0110-3110	51.20	-10.50	
6200093	M4	743	X	X	X	-	X	X	-	-	X	-	O	0110-3110	54.70	-9.10	
6200094	M5	-	-	-	-	-	-	-	-	-	-	-	-	-	51.70	-6.70	
6200095	M6	665	S	X	X	X	S	X	-	-	-	X	-	O	0110-3110	53.10	-15.90
6200105	K4	743	X	X	X	X	X	X	-	-	X	-	O	0110-3110	55.80	-11.40	
6200108	K3	-	-	-	-	-	-	-	-	-	-	-	-	-	53.50	-19.50	
6200163	Brittany	744	X	X	X	X	X	X	-	-	X	-	O	0110-3110	47.50	-8.40	
6400045	K5	743	X	X	X	X	X	X	-	-	-	X	-	O	0110-3110	59.10	-11.70
6400046	K7	741	X	X	X	-	X	X	-	-	X	-	O	0110-3110	60.70	-5.20	

Comments:

- EUMETNET moored buoys are presented in bold characters.

Former EGOS moored buoys (Spanish SeaWatch and WaveScan)

WMO	Name	nobs	Wi	AT	AP	dP	ST	Wa	Ws	Dr	Sb	U	SS	O	Start_end	Lat	Lon
1300130	Gran Canaria	167	X	X	X	-	X	X	X	-	-	-	X	O	2310-3010	28.18	-15.82
1300131	Tenerife Sur	632	S	S	S	-	S	S	-	-	-	-	S	O	0110-2710	28.00	-16.58
6100196	C. Begur	156	S	S	S	-	S	-	-	-	-	-	-	O	0110-0710	41.92	3.65
6100197	Mahon	515	S	S	S	-	S	-	-	-	-	-	-	O	0110-2210	39.72	4.42
6100198	C. de Gata	706	X	X	X	-	X	X	X	-	-	X	O	0110-3010	36.57	-2.33	
6100280	Tarragona	706	X	X	X	-	X	X	X	-	-	X	O	0110-3010	40.77	1.47	
6100281	Valencia	703	X	X	X	-	X	S	X	-	-	X	O	0110-3010	39.47	-0.27	
6100417	C. de Palos	596	X	X	X	-	X	X	X	-	-	X	O	0110-2910	37.65	-0.32	
6100430	Dragonera	706	X	X	X	-	X	X	X	-	-	-	O	0110-3010	39.56	2.11	
6200024	Bilbao-Visc.	706	X	X	X	-	X	X	X	-	-	X	O	0110-3010	43.63	-3.03	
6200025	C. de Penas	706	X	X	X	-	X	X	X	-	-	X	O	0110-3010	43.73	-6.17	
6200082	E. de Bares	707	X	X	X	-	X	X	X	-	-	X	O	0110-3010	44.13	-7.69	
6200083	Villano-Sis.	706	X	X	X	-	X	X	X	-	-	X	O	0110-3010	43.48	-9.22	
6200084	C. Silleiro	706	X	X	X	-	X	X	X	-	-	X	O	0110-3010	42.12	-9.43	
6200085	G. de Cadiz	696	X	X	X	-	X	X	X	-	-	X	O	0110-3010	36.48	-6.97	
6201030	Santander	-	-	-	-	-	-	-	-	-	-	-	-	-	43.84	-3.77	

Comments:

- The EUMETNET buoy is presented in bold characters.

Operating ISPRA moored buoys (Italy)

WMO	Name	nobs	Wi	AT	AP	dP	ST	Wa	Ws	Dr	Sb	U	SS	O	Start_end	Lat	Lon
6100207		1211	-	-	X	-	X	X	-	-	-	-	-	O	0110-3010	37.44	15.15
6100208		514	-	-	S	-	S	S	-	-	-	-	-	O	0810-2210	37.52	12.53
6100209		407	-	-	X	-	X	X	-	-	-	-	-	O	0710-3010	38.26	13.33
6100210		1167	-	-	X	-	X	X	-	-	-	-	-	O	0110-3010	39.02	17.22
6100211		1160	-	-	X	-	X	X	-	-	-	-	-	O	0110-3010	39.45	15.92
6100212		-	-	-	-	-	-	-	-	-	-	-	-	-	40.62	9.89	
6100213		887	-	-	X	-	X	X	-	-	-	-	-	O	0110-3010	40.55	8.11
6100214		1087	-	-	X	-	X	X	-	-	-	-	-	O	0110-3010	40.87	12.95
6100215		1149	-	-	-	-	X	X	-	-	-	-	-	O	0110-3010	40.98	17.38
6100216		1131	-	-	X	-	X	X	-	-	-	-	-	O	0110-3010	42.24	11.55
6100218		147	-	-	X	-	X	X	-	-	-	-	-	O	0110-2910	43.83	13.72
6100219		1161	-	-	X	-	X	X	-	-	-	-	-	O	0110-3010	43.93	9.83
6100220		1071	-	-	X	-	X	X	-	-	-	-	-	O	0110-3010	45.33	12.52
6100221		1204	-	-	X	-	X	X	-	-	-	-	-	O	0110-3010	39.12	9.40

**E-SURFMAR DB Monthly Report
October 2014**

Operating POSEIDON moored buoys (Greece)

WMO	Name	nobs	Wi	AT	AP	dP	ST	Wa	Ws	Dr	Sb	U	SS	O	Start_end	Lat	Lon
6101000			-	-	-	-	-	-	-	-	-	-	-			39.10	24.50
6101001		152	X	X	X	-	X	X	-	-	-	-	-	O	0110-3010	37.60	23.60
6101002			-	-	-	-	-	-	-	-	-	-	-			37.00	22.10
6101003		126	X	-	X	-	X	X	-	-	-	-	-	O	1410-3010	40.00	24.70
6101004			-	-	-	-	-	-	-	-	-	-	-			39.10	25.80
6101005			-	-	-	-	-	-	-	-	-	-	-			37.50	25.50
6101006			-	-	-	-	-	-	-	-	-	-	-			36.30	25.50
6101007		191	X	X	X	-	X	X	-	-	-	-	-	O	0110-3010	35.80	24.90
6101008		194	X	X	X	-	X	X	-	-	-	-	-	O	0110-3010	36.80	21.60
6101009			-	-	-	-	-	-	-	-	-	-	-			38.00	20.60

Other European moored buoys (operated by 3rd parties)

WMO	Name	nobs	Wi	AT	AP	dP	ST	Wa	Ws	Dr	Sb	U	SS	O	Start_end	Lat	Lon
1200050	Cycofos		-	-	-	-	-	-	-	-	-	-	-			33.60	31.90
6100010	Italia-1		-	-	-	-	-	-	-	-	-	-	-			43.80	9.10
6200027	Jersey	140	X	-	X	X	-	X	-	-	-	-	-	O	1410-3110	49.08	-22.20
6200030	L4	684	X	X	X	-	-	-	-	-	-	X	-	O	0110-3110	50.25	-4.22
6200050	E1		-	-	-	-	-	-	-	-	-	-	-			50.04	-4.37
6200086	NSB II	139	X	X	X	S	X	-	-	-	-	X	-	O	0410-2810	55.00	6.40
6200087	NSB III	149	S	S	S	S	S	-	-	-	-	S	-	O	1410-2010	54.70	6.80
6200191	Porto		-	-	-	-	-	-	-	-	-	-	-			41.15	-9.57
6200192	Peniche	133	S	S	S	-	S	S	-	-	-	-	-		0110-0610	39.50	-9.65
6200303	Turbo Bank	713	-	-	-	-	-	X	-	-	-	-	-	O	0110-3110	51.60	-5.10
6200442	PAP	739	X	X	X	-	-	X	-	-	-	X	-	O	0110-3110	49.00	-16.40
6600021	Arkona Becken	729	X	X	-	-	X	X	-	-	-	-	-	O	0110-3110	54.90	13.90
6600022	Oder Bank	681	X	X	-	-	X	-	-	-	-	-	-	O	0110-3110	54.10	14.20
6600024	Darsser Schwelle	735	X	X	-	-	X	X	-	-	-	-	-	O	0110-3110	54.70	12.70

Other offshore moored buoys inside the EUMETNET area

WMO	Name	nobs	Wi	AT	AP	dP	ST	Wa	Ws	Dr	Sb	U	SS	O	Start_end	Lat	Lon
1300001		512	X	X	X	-	X	-	-	-	-	X	X	L	0110-3110	11.47	-23.00
1300008		411	X	X	X	-	X	-	-	-	-	X	-	L	0110-3110	14.98	-38.02
1300308	East Atlantic		-	-	-	-	-	-	-	-	-	-	-			15.00	-38.00
4100026		370	X	X	-	-	X	-	-	-	-	X	-	L	0110-3110	11.49	-38.40
4100040	West Atlantic	737	X	X	X	X	X	X	-	-	-	X	-	O	0110-3110	14.50	-53.00
4100041	Mid. Atlantic	718	X	X	X	X	X	X	-	-	-	-	-	O	0110-3110	14.50	-46.00
4100043	Porto Rico	731	X	X	X	X	X	X	-	-	-	X	-	O	0110-3110	21.00	-65.00
4100044		743	X	X	X	X	X	X	-	-	-	X	-	O	0110-3110	21.70	-58.70
4100046		737	X	X	X	X	X	X	-	-	-	X	-	O	0110-3110	23.90	-70.90
4100047			-	-	-	-	-	-	-	-	-	-	-			27.50	-71.50
4100048		738	X	X	X	X	X	X	-	-	-	X	-	O	0110-3110	32.00	-69.60
4100049		739	X	X	X	X	X	X	-	-	-	X	-	O	0110-3110	27.50	-53.00
4100139		492	X	X	X	-	X	-	-	-	-	X	-	L	0110-3110	20.02	-37.86
4100300	Antilles		-	-	-	-	-	-	-	-	-	-	-			15.85	-57.47
4200059	Caraibes	742	X	X	X	X	X	X	-	-	-	X	-	O	0110-3110	15.00	-67.50
4400008	A Nantucket		-	-	-	-	-	-	-	-	-	-	-			40.50	-69.40
4400011	D Georges Bk		-	-	-	-	-	-	-	-	-	-	-			41.10	-66.60
4400018	SE Cape Cod		-	-	-	-	-	-	-	-	-	-	-			41.30	-69.30
4400024	NNE Channel	706	X	X	X	-	X	X	-	-	-	-	-	O	0110-3110	42.30	-65.90
4400137	E Scotia Sl.	736	X	X	X	X	X	X	-	-	-	-	-	O	0110-3110	42.30	-62.00
4400138	SW Gd Banks		-	-	-	-	-	-	-	-	-	-	-			44.30	-53.60
4400139	Beanquereau	735	X	X	X	X	X	X	-	-	-	-	-	O	0110-3110	44.30	-57.10
4400140	Tail of Bk		-	-	-	-	-	-	-	-	-	-	-			43.80	-51.70
4400141	Larentian F	708	X	X	X	X	X	X	-	-	-	-	-	O	0110-3110	43.00	-58.00
4400150	La Have Bk	733	X	X	X	X	X	X	-	-	-	-	-	O	0110-3110	42.50	-64.00

E-SURFMAR DB Monthly Report October 2014

Buoy-QC statistics from Meteo-France model outputs

Datend : Date of the last value received on GTS
Recvd : Total number of values received on GTS
GE : Number of Gross Errors (excluded from bias and sd computations)
bias : Mean differences between observation values and co-located model output values
Std : Standard deviation of differences

Air Pressure (hPa), drifting buoys, October 2014

Datend	WMO	Telcom	Recvd	GE	Bias	Std
20141031	2500615	61660360	727	0	0.1	0.5
20141031	2500616	61762070	727	0	-0.3	0.4
20141031	2500617	61767070	727	0	-0.4	0.4
20141026	2500619	60276270	612	0	-0.4	0.4
20141031	2500620	61760090	727	0	-0.2	0.5
20141031	2500624	60247420	727	0	0.1	0.4
20141031	2500648	60370080	727	0	-0.2	0.5
20141022	2500652	60176700	515	0	-0.1	0.3
20141002	2600556	11549080	28	0	-0.4	0.9
20141031	4100969	60213780	630	0	-0.3	0.4
20141031	4100970	60213790	729	0	0.2	0.5
20141031	4100971	60215900	728	0	0.1	0.3
20141031	4100972	60217780	699	0	0.1	0.3
20141031	4400546	11160640	728	0	-0.3	0.5
20141031	4400547	60173710	727	0	0.9	0.7
20141031	4400548	11799230	724	0	0.3	0.5
20141031	4400549	60896130	728	0	0.0	0.7
20141031	4400550	60894140	728	0	-0.1	0.6
20141031	4400551	60892140	728	1	0.4	0.7
20141031	4400601	60890150	728	0	-0.3	0.6
20141031	4400602	11468700	727	0	-0.1	0.5
20141031	4400603	11793230	546	0	0.1	0.6
20141031	4400604	11794240	526	0	0.1	0.9
20141031	4400605	11473110	727	0	-0.3	0.5
20141031	4400606	11162640	499	0	-0.1	0.6
20141031	4400608	11093800	494	0	0.0	0.7
20141031	4400610	61517860	728	0	-0.1	0.9
20141031	4400612	61511880	728	1	-0.0	0.8
20141031	4400613	11475040	727	0	-0.4	0.5
20141031	4400614	61661340	669	0	-0.2	0.8
20141031	4400615	61666340	729	0	-0.7	0.6
20141031	4400620	61667370	728	0	0.3	0.5
20141031	4400621	61519840	710	0	0.4	0.5
20141031	4400622	61668320	729	0	-0.0	0.8
20141031	4400624	11341110	719	0	-0.0	0.5
20141031	4400625	61668340	718	0	0.1	0.7
20141031	4400725	11027170	727	0	0.1	1.0
20141031	4400739	61516840	728	0	0.5	0.6
20141031	4400740	11883820	677	0	-0.2	0.4
20141031	4400747	61610060	706	0	0.0	0.6
20141031	4400765	11685410	726	0	0.2	0.4
20141031	4400767	11919510	727	0	-0.8	1.7
20141027	4400771	60507000	631	2	0.1	1.5
20141031	4400773	60211790	622	0	0.1	0.3
20141031	4400835	60218770	731	0	-0.3	0.4
20141031	4400836	60218680	731	0	-0.1	0.7
20141031	4400837	60209590	731	0	-0.2	0.7
20141031	4400839	60205090	731	0	-0.2	0.4
20141031	4400840	60208710	730	0	0.1	0.5
20141031	4400846	60441290	727	0	0.4	0.4
20141031	4400847	60442280	727	0	0.2	0.7
20141031	4400848	60448280	727	0	0.2	0.3
20141031	4400850	60648340	570	2	0.6	0.7
20141031	4400876	60648350	727	0	0.6	0.5
20141031	4400863	60211690	729	0	0.1	0.4
20141031	4400866	11793240	727	0	-0.2	0.6
20141031	4400867	11593590	727	0	-0.2	0.6
20141031	4400868	11794230	726	0	0.1	0.5
20141031	4400871	11790240	727	0	-0.0	0.8
20141031	4400872	60202920	727	0	-0.4	0.5
20141031	4400874	60213460	729	0	0.1	0.5
20141031	4400876	60648350	727	0	0.6	0.5

E-SURFMAR DB Monthly Report October 2014

20141031	4400877	60526170	731	0	-0.1	0.4
20141031	4400878	60528170	731	0	-0.1	0.6
20141031	4400879	60554620	731	0	-0.1	0.5
20141031	4400880	60556880	731	2	-0.2	0.7
20141031	4400885	60218780	730	0	-0.2	0.7
20141031	4400887	60251440	731	0	0.1	0.6
20141031	4400888	60359010	730	0	-0.1	0.4
20141031	4400889	60202320	730	0	0.0	0.3
20141031	4400890	12000230	730	0	-0.1	0.5
20141031	4400891	12007220	666	0	0.0	0.3
20141031	4400892	60018400	719	0	-0.1	0.6
20141031	6200514	60203700	727	0	0.0	0.5
20141031	6200516	11475100	727	0	0.1	0.5
20141027	6200535	61660330	79	1	-3.3	0.9
20141031	6200536	11599570	722	0	-0.0	0.4
20141031	6200537	11791240	726	0	-0.1	0.4
20141031	6200538	11460700	727	0	0.0	0.4
20141031	6200539	60891140	728	0	0.1	0.7
20141031	6200551	60897120	728	0	-0.1	0.5
20141031	6200552	11797240	489	0	0.0	0.8
20141031	6200553	11165650	727	0	-0.0	0.5
20141023	6200680	11166640	536	0	-0.3	0.5
20141031	6200681	11168640	727	0	-0.2	0.6
20141031	6200687	11349100	728	0	-0.1	0.4
20141031	6200695	60408990	727	0	0.2	0.4
20141031	6200713	11246980	719	0	-0.2	0.4
20141031	6200714	11240980	691	0	-0.2	0.3
20141030	6200729	60207600	707	0	-0.1	0.6
20141031	6200940	60203850	705	0	-0.0	0.4
20141031	6200941	60207590	730	0	-0.0	0.3
20141017	6300639	11471050	393	0	-0.5	0.3
20141031	6300640	60172710	727	0	-0.0	0.5
20141031	6300641	61665210	626	30	-0.7	2.0
20141031	6300644	61766070	499	0	-0.7	1.6
20141031	6400516	11473100	727	0	-0.4	0.4
20141031	6400520	11479040	727	0	-0.3	0.5
20141031	6400521	11470030	727	0	-0.2	0.6
20141031	6400522	61511870	652	0	-0.1	0.6
20141031	6400525	60175710	727	0	-0.1	0.5
20141031	6400607	11479100	727	0	-0.1	0.4
20141031	6400613	60174710	727	0	-0.0	0.5
20141031	6400614	60178700	727	0	-0.0	0.5
20141031	6400615	60173700	727	0	0.3	0.4
20141002	6400616	60178710	38	4	-0.3	3.0
20141031	6400622	60172810	727	0	0.0	0.6
20141031	6400623	11470040	727	0	0.1	0.6
20141031	6400664	60176710	727	0	-0.1	0.5
20141031	6400665	60171710	727	0	0.1	0.4
20141031	6400666	60179710	727	0	0.2	0.5
20141031	6400667	61615060	704	0	-0.2	0.8
20141031	6400668	60177860	727	0	0.1	0.4
20141031	6400669	60177710	727	0	0.3	0.6
20141031	6400670	61513850	728	0	0.2	0.6
20141031	6400691	61514870	728	0	0.4	0.4
20141031	6400692	60172720	727	0	0.2	0.5
20141029	6400693	60173720	683	65	-0.6	1.5
20141031	6500595	11595570	727	0	-0.5	0.4
20141031	6500596	61511850	728	0	0.4	0.5
20141031	6500597	11595650	727	0	-0.1	0.5
20141031	6500598	11792240	722	0	0.0	0.6

Air Pressure (hPa), moored buoys, October 2014

Datend	WMO	Telcom	Recvd	GE	Bias	Std
20141030	1300130		167	0	0.8	0.7
20141027	1300131		632	0	0.1	0.6
20141031	6100001		744	1	-0.3	0.5
20141031	6100002		739	1	-0.1	0.6
20141007	6100196		156	30	3.2	3.4
20141022	6100197		515	0	0.1	0.6
20141030	6100198		706	0	0.4	0.7
20141030	6100207		1211	0	0.6	0.6
20141022	6100208		514	0	-1.0	0.5
20141030	6100209		407	0	-0.4	0.6
20141030	6100210		1167	0	0.7	0.9

E-SURFMAR DB Monthly Report October 2014

20141030	6100211	1160	0	0.1	0.6
20141030	6100213	887	0	2.1	1.5
20141030	6100214	1087	0	0.2	0.5
20141030	6100216	1131	0	0.3	0.5
20141029	6100218	147	0	0.6	0.4
20141030	6100219	1161	0	-0.4	0.5
20141030	6100220	1071	0	-0.1	0.6
20141030	6100221	1204	0	-0.3	0.6
20141030	6100280	706	0	0.6	0.6
20141030	6100281	703	0	0.4	0.7
20141029	6100417	596	0	0.4	0.7
20141030	6100430	706	0	0.5	0.6
20141030	6101001	152	0	0.6	0.7
20141030	6101003	126	0	0.8	0.7
20141030	6101007	191	0	0.3	0.6
20141030	6101008	194	0	0.1	0.8
20141031	6200001	744	0	0.1	0.5
20141030	6200024	706	0	0.5	0.7
20141030	6200025	706	0	0.4	0.6
20141031	6200027	137	1	0.2	1.0
20141031	6200029	663	0	0.1	0.5
20141031	6200030	683	0	-0.0	0.5
20141031	6200081	744	0	0.1	0.5
20141030	6200082	706	0	0.4	0.6
20141030	6200083	706	0	0.3	0.7
20141030	6200084	706	0	0.3	0.7
20141030	6200085	696	0	0.9	0.6
20141028	6200086	138	0	-0.4	0.9
20141020	6200087	149	0	-0.3	0.4
20141031	6200091	742	2	-0.3	0.6
20141031	6200092	742	0	0.0	0.5
20141031	6200093	743	2	-0.2	0.7
20141031	6200095	663	22	-0.1	0.9
20141031	6200105	743	0	-0.1	0.6
20141031	6200163	744	0	0.0	0.5
20141006	6200192	133	0	0.9	0.4
20141031	6200442	739	0	-0.1	0.6
20141031	6400045	743	0	0.0	0.6
20141031	6400046	741	1	0.1	0.7

Air Temperature (C), moored buoys, October 2014

Datend	WMO	Telcom	Recvd	GE	Bias	Std
20141030	1300130		167	0	-1.3	0.8
20141027	1300131		632	0	2.7	0.9
20141031	6100001		744	0	-0.3	0.6
20141031	6100002		738	0	-0.2	0.7
20141007	6100196		156	0	-0.0	0.4
20141022	6100197		515	0	0.5	0.7
20141030	6100198		706	0	0.4	1.0
20141030	6100280		706	0	0.3	0.6
20141030	6100281		703	0	0.5	1.2
20141029	6100417		596	0	0.3	0.8
20141030	6100430		705	0	0.2	0.5
20141030	6101001		152	0	0.1	0.7
20141030	6101007		191	0	1.5	0.6
20141030	6101008		194	0	-0.4	0.9
20141031	6200001		744	0	0.0	0.7
20141030	6200024		704	0	0.5	0.7
20141030	6200025		706	0	-0.5	0.9
20141031	6200029		663	0	-0.1	0.6
20141031	6200030		684	0	-0.4	0.6
20141031	6200081		744	0	-0.3	0.6
20141030	6200082		706	0	-0.1	0.5
20141030	6200083		706	0	-0.0	0.6
20141030	6200084		706	0	0.2	0.6
20141030	6200085		696	0	-0.0	0.7
20141028	6200086		138	0	-0.2	0.5
20141020	6200087		149	0	-0.0	0.6
20141031	6200091		742	0	0.0	0.5
20141031	6200092		742	0	-0.2	0.6
20141031	6200093		743	0	-0.1	0.5
20141031	6200095		634	0	-0.5	0.6
20141031	6200105		743	0	-0.5	0.6
20141031	6200163		744	0	-0.1	0.6

E-SURFMAR DB Monthly Report October 2014

20141006	6200192	133	0	0.4	0.7
20141029	6200442	682	55	-1.5	3.9
20141031	6400045	743	0	-0.4	0.6
20141031	6400046	741	0	-0.2	0.5
20141031	6600021	729	0	0.3	0.6
20141031	6600022	680	0	0.6	0.9
20141031	6600024	735	0	0.6	0.6

Wind direction (deg.), moored buoys, October 2014

Datend	WMO	Telcom	Recvd	GE	Bias	Std
20141030	1300130		167	10	11	28
20141027	1300131		628	65	4	34
20141031	6100001		743	49	-1	31
20141031	6100002		737	21	-2	24
20141007	6100196		153	4	-14	27
20141022	6100197		511	9	-8	19
20141030	6100198		703	30	-8	23
20141030	6100280		686	43	-6	33
20141030	6100281		702	192	-12	51
20141029	6100417		589	12	-0	24
20141030	6100430		694	42	-7	29
20141030	6101001		152	6	5	29
20141030	6101003		126	22	-20	40
20141030	6101007		190	45	0	47
20141030	6101008		194	15	3	33
20141031	6200001		744	21	-3	24
20141030	6200024		689	32	3	30
20141030	6200025		701	72	3	36
20141031	6200027		112	2	2	28
20141031	6200029		663	2	-0	13
20141031	6200030		466	4	16	20
20141031	6200081		744	2	-5	11
20141030	6200082		705	22	-3	23
20141030	6200083		702	16	-3	25
20141030	6200084		700	20	-2	25
20141030	6200085		687	15	-2	24
20141028	6200086		139	1	1	17
20141020	6200087		148	15	-10	39
20141031	6200091		742	11	3	16
20141031	6200092		742	3	3	16
20141031	6200093		742	1	6	16
20141024	6200095		50	5	6	25
20141031	6200105		743	1	-2	15
20141031	6200163		744	5	-1	18
20141006	6200192		133	0	6	11
20141031	6200442		739	1	1	12
20141031	6400045		743	3	-8	14
20141031	6400046		741	3	4	12
20141031	6600021		727	6	-1	17
20141031	6600022		681	2	-9	19
20141031	6600024		731	3	11	28

Wind speed rate, moored buoys, October 2014

Datend	WMO	Telcom	Recvd	GE	Rate	Err
20141030	1300130		167	0	1.3	1.1
20141027	1300131		628	0	1.0	1.8
20141031	6100001		743	0	1.3	1.7
20141031	6100002		737	2	1.1	2.0
20141007	6100196		153	0	1.1	2.2
20141022	6100197		511	0	1.1	1.2
20141030	6100198		703	0	0.9	1.7
20141030	6100280		686	0	1.3	1.5
20141030	6100281		702	0	1.6	2.2
20141029	6100417		589	0	0.9	1.3
20141030	6100430		694	1	1.2	1.5
20141030	6101001		152	0	1.0	1.7
20141030	6101003		126	4	0.8	2.5
20141030	6101007		190	0	0.0	0.0
20141030	6101008		194	1	1.1	2.2

E-SURFMAR DB Monthly Report October 2014

20141031	6200001	744	0	1.2	1.4
20141030	6200024	689	0	1.2	1.7
20141030	6200025	701	0	0.9	2.1
20141031	6200027	112	1	0.9	1.4
20141031	6200029	663	0	1.0	1.2
20141031	6200030	466	0	1.0	1.7
20141031	6200081	744	0	1.0	1.4
20141030	6200082	705	0	0.9	1.5
20141030	6200083	702	0	0.9	1.8
20141030	6200084	700	1	1.0	1.8
20141030	6200085	687	0	0.9	1.8
20141028	6200086	138	0	1.2	1.6
20141020	6200087	148	10	1.2	2.1
20141031	6200091	742	1	0.9	1.8
20141031	6200092	742	0	0.9	1.5
20141031	6200093	742	1	1.0	1.9
20141024	6200095	50	2	0.8	5.4
20141031	6200105	743	1	0.9	1.4
20141031	6200163	744	0	1.0	1.4
20141006	6200192	133	0	1.1	0.9
20141031	6200442	739	0	1.0	1.2
20141031	6400045	743	0	1.0	1.4
20141031	6400046	741	3	1.0	1.5
20141031	6600021	727	0	1.2	1.2
20141031	6600022	681	1	1.3	1.1
20141031	6600024	731	23	1.2	1.2

Comments on QC statistics :

Air pressure

1. Metocean buoy WMO **4400767** is reporting wrong pressure values at its supposed end of life: more than 1000 days of operation. A record.
2. Metocean buoys WMO **4400771**, **6400616** and **6400693** reported many dubious pressure values when ashore in various locations... before the GTS transmission was stopped.
3. Metocean buoys WMO **6300641** and **6400644** temporarily reported wrong pressure data in October for unknown reasons.
4. Spanish moored buoy WMO **6100196** reported wrong pressure values before the GTS transmission was stopped for this parameter.
5. Italian moored buoy WMO **6100213** continues to report systematic biased pressure values (~2.1 hPa).
6. Irish moored buoy M6 (WMO **6100095**) reported 22 gross errors during the month.

Air temperature

7. Air temperature measurements, carried out by Spanish buoy WMO **1300131**, (Canary Islands) presented an increasing bias in October when compared to French analysis model outputs (2.7°C in average during the month).
8. Air temperature measurements, carried out by Greek Poseidon buoy WMO **6101007**, continue to be systematically biased for about 1,5 °C.
9. PAP moored buoy (OceanSITES WMO **6200442**) reported wrong temperature data before the GTS data transmission was stopped for this parameter.

Wind

10. Wind directions reported by Spanish moored buoy WMO **6100281** appeared dubious in October.
11. Greek moored buoy WMO **6101007** continued to report abnormal calm winds onto the GTS.

E-SURFMAR DB Monthly Report October 2014

Monthly QC statistics and other data quality control tools are available on line at :
<http://www.meteo.shom.fr/qctools/>

The working area of the E-SURFMAR website is open at <http://esurfmar.meteo.fr/wikisurf-wa/> . Ask the E-SURFMAR Programme Manager Pierre.Blouch@meteo.fr for the password in case you forgot it. Graphs of system performances may be displayed/downloaded at http://esurfmar.meteo.fr/doc/r/surfmar/others/e-surfmar_monitoring.pdf.