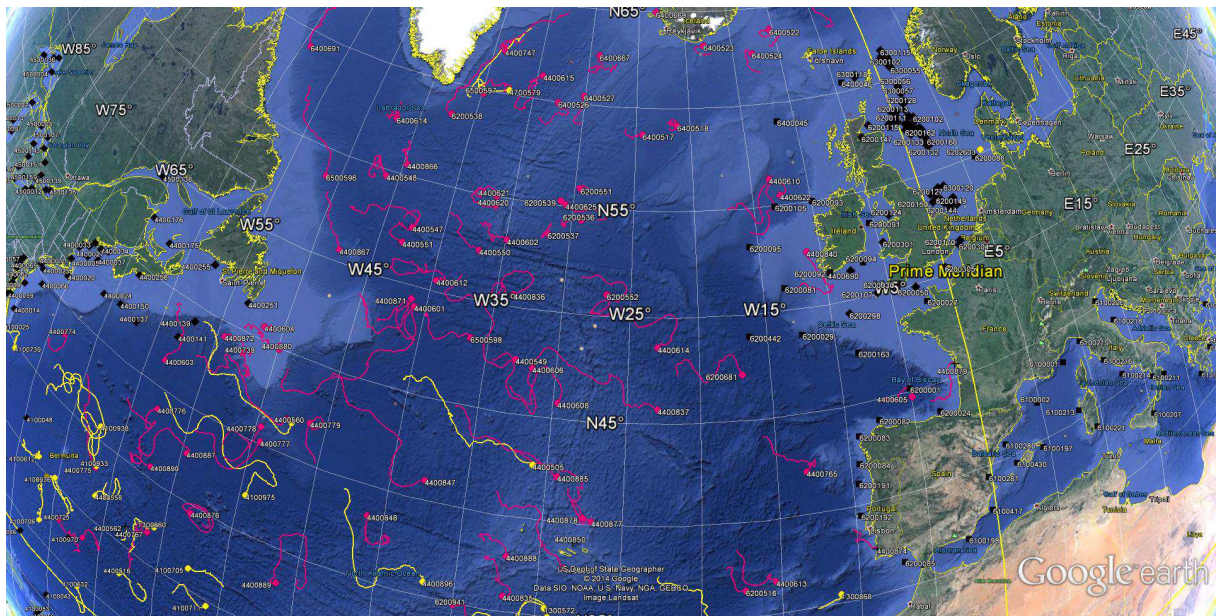


DATA BUOY MONTHLY REPORT

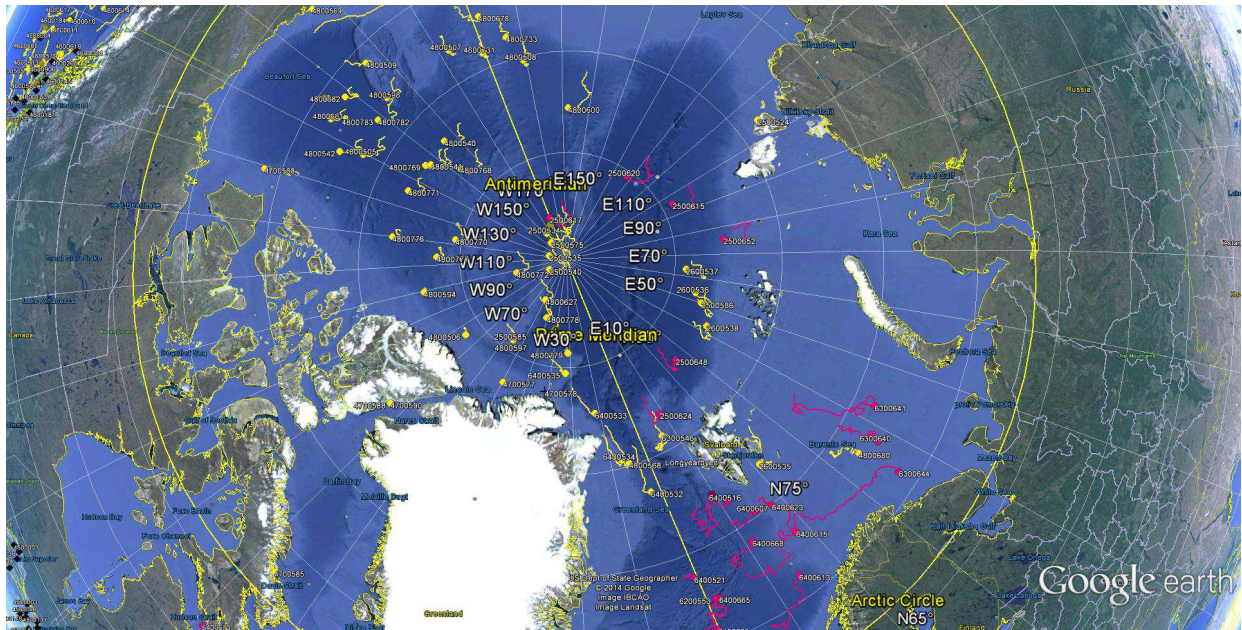
November 2014



*November 2014 : Operating data buoys in the North Atlantic
Drifting buoy trajectories : E-SURFMAR (red), others (yellow)
Moored buoy positions (black)*

*Most recent trajectories may be seen at:
http://www.meteo.shom.fr/cartographie/data/kml/MeteoFrance_buoys_map_15.kmz*

E-SURFMAR DB Monthly Report November 2014



November 2014
Drifting buoy trajectories in Arctic Ocean and adjacent seas : E-SURFMAR (red), others (yellow)

DRIFTING BUOYS

Network status

By the end of November, **116 Drifting buoys**, reporting air pressure onto the GTS, were in operation in the frame of E-SURFMAR. Out of these, 81 were E-SURFMAR funded Iridium SVP-Bs, including 6 in the Arctic and 11 HRSST-2 buoys. The remaining buoys were: 35 Iridium drifters owned by NOAA and upgraded with barometers by E-SURFMAR.

Information about the availability of buoys for future deployments may be get from the E-SURFMAR wikisite (working area) at: http://esurfmar.meteo.fr/wikisurf-wa/index.php/Availability_of_drifting_buoys

Besides E-SURFMAR buoys, 59 drifting buoys were reporting at least air pressure observations from the EUMETNET area of interest. Out of these, 3 were reporting Sea Surface Salinity, some in the frame of Spurs/Strasse campaign (validation of SMOS and Aquarius remote SSS measurements). Two German moored buoys are reporting their data with WMO numbers normally allocated to drifting buoys (6202603 and 6202604).

Drifting buoys - New deployments

WMO	Telcom	Typ	Ow	Dep_Date	DepLat	DepLon	From	Comment
1300868	11686410	MSB	EU	20141121	35.0	-12.8	Southampton	Hurst point
1300869	11688410	MSB	EU	20141123	26.0	-15.9	Southampton	Hurst point
4400774	61477400	DSB	UP	20141116	37.5	-69.9	Norfolk	OOCL Vancouver
4400775	61476400	DSB	UP	20141116	38.0	-65.0	Norfolk	OOCL Vancouver
4400776	61474410	DSB	UP	20141117	38.4	-60.5	Norfolk	OOCL Vancouver
4400777	61475420	DSB	UP	20141117	39.0	-55.0	Norfolk	OOCL Vancouver
4400778	61475430	DSB	UP	20141118	39.5	-50.0	Norfolk	OOCL Vancouver
4400779	61473400	DSB	UP	20141118	40.0	-45.0	Norfolk	OOCL Vancouver
6400517	61619060	MSB	EU	20141112	59.0	-26.0	Bremerhaven	Walther Herwig III
6400518	60892150	MSB	EU	20141113	59.0	-21.9	Bremerhaven	Walther Herwig III
6400523	61510870	MSB	EU	20141109	62.7	-16.9	Rotterdam	Lagarfoss
6400524	61619040	MSB	EU	20141109	61.6	-12.3	Rotterdam	Lagarfoss
6400526	61611070	MSB	EU	20141111	59.2	-34.1	Bremerhaven	Walther Herwig III
6400527	61514840	MSB	EU	20141112	59.1	-30.0	Bremerhaven	Walther Herwig III

Operating drifting buoys in North Atlantic by the end of the month

WMO	Telcom	Typ	Ow	nobs	Wi	AT	AP	dP	ST	Wa	Ws	Dr	Sb	U	SS	O	Start_end	Lat	Lon	Age
1300868	11686410	MSB	EU	223	-	-	X	X	X	-	-	X	-	-	-	T	2111-3011	35.53	-11.31	10
1300869	11688410	MSB	EU	189	-	-	X	X	X	-	-	X	-	-	-	T	2311-3011	25.65	-17.62	8
2500615	61660360	MSB	EU	720	-	-	X	X	X	-	-	X	-	-	-	T	0111-3011	84.49	95.69	138
2500616	61762070	MSB	EU	720	-	-	X	X	S	-	-	X	-	-	-	T	0111-3011	74.12	157.47	117
2500617	61767070	MSB	EU	720	-	-	X	X	S	-	-	X	-	-	-	T	0111-3011	87.94	-179.68	71
2500620	61760090	MSB	EU	721	-	-	X	X	-	-	-	X	-	-	-	T	0111-3011	85.26	122.44	65
2500624	60247420	MSB	EU	720	-	-	X	X	X	-	-	X	-	-	-	T	0111-3011	81.69	9.09	457
2500648	60370080	MSB	EU	720	-	-	X	X	X	-	-	X	-	-	-	T	0111-3011	83.18	25.25	452
4100969	60213780	PSB	UP	534	-	-	X	X	X	-	-	X	-	-	-	T	0111-3011	23.89	-28.19	480
4100970	60213790	PSB	UP	707	-	-	X	X	X	-	-	X	-	-	-	T	0111-3011	28.42	-61.55	479
4100971	60215900	PSB	UP	719	-	-	X	X	X	-	-	X	-	-	-	T	0111-3011	29.66	-32.82	479
4100972	60217780	PSB	UP	719	-	-	X	X	X	-	-	X	-	-	-	T	0111-3011	24.69	-37.84	479
4400546	11160640	MSB	EU	720	-	-	X	X	X	-	-	X	-	-	-	T	0111-3011	30.71	-21.68	621
4400547	60173710	MSB	EU	720	-	-	X	X	X	-	-	X	-	-	-	T	0111-3011	52.70	-42.57	112
4400548	11799230	MSB	E2	717	-	-	X	X	X	-	-	X	-	-	-	T	0111-3011	54.71	-46.07	112
4400549	60896130	MSB	EU	719	-	-	X	X	X	-	-	X	-	-	-	T	0111-3011	47.59	-32.87	85
4400550	60894140	MSB	EU	719	-	-	X	X	X	-	-	X	-	-	-	T	0111-3011	52.35	-36.88	85
4400551	60892140	MSB	EU	719	-	-	X	X	X	-	-	X	-	-	-	T	0111-3011	51.88	-43.02	85
4400601	60890150	MSB	EU	719	-	-	X	X	X	-	-	X	-	-	-	T	0111-3011	49.09	-40.82	84

E-SURFMAR DB Monthly Report November 2014

4400602	11468700	MSB	UP	720	-	-	X	X	X	-	-	X	-	-	-	T	0111-3011	53.06	-34.86	619
4400603	11793230	MSB	E2	719	-	-	X	X	X	-	-	X	-	-	-	T	0111-3011	41.51	-58.39	55
4400604	11794240	MSB	E2	710	-	-	X	X	X	-	-	X	-	-	-	T	0111-3011	45.69	-51.51	54
4400605	11473110	MSB	EU	720	-	-	X	X	X	-	-	X	-	-	-	T	0111-3011	44.75	-4.99	569
4400606	11162640	MSB	EU	720	-	-	X	X	X	-	-	X	-	-	-	T	0111-3011	47.29	-31.64	53
4400608	11093800	MSB	E2	708	-	-	X	X	X	-	-	X	-	-	-	T	0111-3011	45.78	-29.67	52
4400610	61517860	MSB	EU	719	-	-	X	X	X	-	-	X	-	-	-	T	0111-3011	56.32	-13.38	356
4400612	61511880	MSB	EU	700	-	-	X	X	X	-	-	X	-	-	-	T	0111-3011	50.53	-39.63	344
4400613	11475040	MSB	EU	714	-	-	X	X	X	-	-	X	-	-	-	T	0111-3011	36.80	-15.40	635
4400614	61661340	MSB	EU	715	-	-	X	X	X	-	-	X	-	-	-	T	0111-3011	48.62	-22.96	215
4400615	61666340	MSB	EU	719	-	-	X	X	X	-	-	X	-	-	-	T	0111-3011	61.20	-34.42	214
4400620	61667370	MSB	EU	719	-	-	X	X	X	-	-	X	-	-	-	T	0111-3011	54.58	-36.29	214
4400621	61519840	MSB	EU	689	-	-	X	X	X	-	-	X	-	-	-	T	0111-3011	55.03	-36.37	295
4400622	61668320	MSB	EU	719	-	-	X	X	X	-	-	X	-	-	-	T	0111-3011	55.49	-12.63	213
4400624	11341110	YSB	EU	715	-	-	X	X	X	-	-	X	-	-	-	T	0111-3011	28.60	-14.81	720
4400625	61668340	MSB	EU	628	-	-	X	X	X	-	-	X	-	-	-	T	0111-3011	55.09	-30.60	213
4400725	11027170	MSB	EU	720	-	-	X	X	X	-	-	X	-	-	-	T	0111-3011	28.08	-64.08	891
4400739	61516840	MSB	EU	719	-	-	X	X	X	-	-	X	-	-	-	T	0111-3011	43.99	-52.54	181
4400740	11883820	PSB	UP	418	-	-	X	X	X	-	-	X	-	-	-	T	0111-3011	25.82	-43.73	876
4400747	61610060	MSB	EU	691	-	-	X	X	X	-	-	X	-	-	-	T	0111-3011	62.14	-38.87	341
4400765	11685410	MSB	EU	717	-	-	X	X	X	-	-	X	-	-	-	T	0111-3011	42.20	-13.08	612
4400773	60211790	PSB	UP	602	-	-	X	X	X	-	-	X	-	-	-	T	0111-3011	22.11	-36.58	505
4400774	61477400	DSB	UP	328	-	-	X	X	X	-	-	X	-	-	-	T	1711-3011	38.60	-68.19	15
4400775	61476400	DSB	UP	327	-	-	X	X	X	-	-	X	-	-	-	T	1711-3011	33.36	-61.51	15
4400776	61474410	DSB	UP	328	-	-	X	X	X	-	-	X	-	-	-	T	1711-3011	38.92	-57.71	14
4400777	61475420	DSB	UP	298	-	-	X	X	X	-	-	X	-	-	-	T	1811-3011	40.17	-49.32	14
4400778	61475430	DSB	UP	303	-	-	X	X	X	-	-	X	-	-	-	T	1811-3011	40.92	-49.56	13
4400779	61473400	DSB	UP	279	-	-	X	X	X	-	-	X	-	-	-	T	1911-3011	42.10	-46.16	13
4400835	60218770	PSB	UP	717	-	-	X	X	X	-	-	X	-	-	-	T	0111-3011	35.90	-32.00	272
4400836	60218680	PSB	UP	719	-	-	X	X	X	-	-	X	-	-	-	T	0111-3011	50.58	-33.68	272
4400837	60209490	PSB	UP	718	-	-	X	X	X	-	-	X	-	-	-	T	0111-3011	45.72	-22.92	272
4400839	60205090	PSB	UP	718	-	-	X	X	X	-	-	X	-	-	-	T	0111-3011	37.72	-28.42	272
4400840	60208710	PSB	UP	720	-	-	X	X	X	-	-	X	-	-	-	T	0111-3011	52.65	-11.20	271
4400846	60441290	DSB	UP	718	-	-	X	X	X	-	-	X	-	-	-	T	0111-3011	31.43	-29.43	309
4400847	60442280	DSB	UP	719	-	-	X	X	X	-	-	X	-	-	-	T	0111-3011	41.03	-37.71	309
4400848	60448280	DSB	UP	718	-	-	X	X	X	-	-	X	-	-	-	T	0111-3011	38.51	-41.06	308
4400863	60211690	PSB	UP	664	-	-	X	X	X	-	-	X	-	-	-	T	0111-3011	29.62	-30.77	503
4400866	11793240	MSB	E2	715	-	-	X	X	X	-	-	X	-	-	-	T	0111-3011	55.53	-44.62	163
4400867	11593590	MSB	EU	720	-	-	X	X	X	-	-	X	-	-	-	T	0111-3011	50.60	-47.77	161
4400868	11794230	MSB	E2	720	-	-	X	X	X	-	-	X	-	-	-	T	0111-3011	28.18	-49.61	572
4400871	11790240	MSB	E2	720	-	-	X	X	X	-	-	X	-	-	-	T	0111-3011	49.41	-41.17	157
4400872	60202920	MSB	EU	720	-	-	X	X	X	-	-	X	-	-	-	T	0111-3011	44.31	-54.33	157
4400876	60648350	DSB	UP	719	-	-	X	X	X	-	-	X	-	-	-	T	0111-3011	34.63	-53.09	309
4400877	60526170	PSB	UP	719	-	-	X	X	X	-	-	X	-	-	-	T	0111-3011	40.19	-26.94	300
4400878	60528170	PSB	UP	719	-	-	X	X	X	-	-	X	-	-	-	T	0111-3011	40.34	-27.49	300
4400880	60656880	PSB	UP	716	-	-	X	X	X	-	-	X	-	-	-	T	0111-3011	44.96	-49.86	301
4400885	60218780	PSB	UP	720	-	-	X	X	X	-	-	X	-	-	-	T	0111-3011	42.27	-29.28	185
4400887	60251440	PSB	UP	719	-	-	X	X	X	-	-	X	-	-	-	T	0111-3011	37.65	-54.47	187
4400888	60359010	PSB	UP	719	-	-	X	X	X	-	-	X	-	-	-	T	0111-3011	38.01	-32.01	185
4400889	60202320	PSB	UP	629	-	-	X	X	X	-	-	X	-	-	-	T	0111-3011	33.15	-46.26	186
4400890	12000230	PSB	UP	650	-	-	X	X	X	-	-	X	-	-	-	T	0111-3011	35.75	-56.98	185
4400891	12007220	PSB	UP	689	-	-	X	X	X	-	-	X	-	-	-	T	0111-3011	30.84	-29.67	183
4400892	60018400	PSB	UP	680	-	-	X	X	X	-	-	X	-	-	-	T	0111-3011	41.85	-47.87	184
6200514	60203700	MSB	E2	720	-	-	X	X	X	-	-	X	-	-	-	T	0111-3011	66.41	-10.55	647
6200516	11475100	MSB	EU	720	-	-	X	X	X	-	-	X	-	-	-	T	0111-3011	36.49	-17.30	573
6200536	11599570	MSB	EU	720	-	-	X	X	X	-	-	X	-	-	-	T	0111-3011	54.42	-29.19	175
6200537	11791240	MSB	E2	717	-	-	X	X	X	-	-	X	-	-	-	T	0111-3011	53.63	-31.76	175
6200539	60891140	MSB	EU	719	-	-	X	X	X	-	-	X	-	-	-	T	0111-3011	55.25	-31.04	87
6200551	60897120	MSB	EU	719	-	-	X	X	X	-	-	X	-	-	-	T	0111-3011	55.88	-29.49	87
6200552	11797240	MSB	E2	719	-	-	X	X	X	-	-	X	-	-	-	T	0111-3011	51.02	-26.78	52
6200553	11165650	MSB	EU	720	-	-	X	X	X	-	-	X	-	-	-	T	0111-3011	72.37	1.35	617
6200681	11168640	MSB	EU	720	-	-	X	X	X	-	-	X	-	-	-	T	0111-3011	47.22	-17.04	745
6200687	11349100	YSB	EU	719	-	-	X	X	X	-	-	X	-	-	-	T	0111-3011	77.16	9.54	724
6200695	60408990	MSB	E2	720	-	-	X	X	X	-	-	X	-	-	-	T	0111-3011	26.94	-24.42	573
6200713	11246980	YSB	EU	704	-	-	X	X	X	-	-	X	-	-	-	T	0111-3011	26.04	-49.31	719
6200714	11240980	YSB	EU	716	-	-	X	X	X	-	-	X	-	-	-	T	0111-3011	23.81	-46.49	716
6200940	60203850	PSB	UP	709	-	-	X	X	X	-	-	X	-	-	-	T	0111-3011	33.46	-28.53	182
6200941	61516840	PSB	UP	675	-	-	X	X	X	-	-	X	-	-	-	T	0111-3011	34.95	-34.95	182
6300640	60172710	MSB	EU	720	-	-	X	X	X	-	-	X	-	-	-	T	0111-3011	72.91	37.83	474
6300644	61766070	MSB	EU	720	-	-	X	X	X	-	-	X	-	-	-	T	0111-3011	71.14	35.60	60
6400516	11473100	MSB	EU	720	-	-	X	X	X	-	-	X	-	-	-	T	0111-3011	76.47	11.58	782
6400517	61619060	MSB	EU	412	-	-	X	X	X	-	-	X	-	-	-	T	1311-3011	58.69	-24.39	19
6400518	60892150	MSB	EU	408	-	-	X	X	X	-	-	X	-	-	-	T	1311-3011	59.14	-21.20	18
6400520	11479040	MSB	EU	720	-	-	X	X	X	-	-	X	-	-	-	T	0111-3011	70.55	-5.21	569
6400521	11470030	MSB	EU	721	-	-	X	X	X	-	-	X	-	-	-	T	0111-3011	73.79	-0.48	567
6400522	61511870	MSB	EU	588	-	-	X	X	X	-	-	X	-	-	-	T	0111-3011	63.75	-10.43	100
6400523	61510870	MSB	EU	487	-	-	X	X	X	-	-	X	-	-	-	T	1011-3011	63.19	-18.02	22
6400524	61619040	MSB	EU	487	-	-	X	X	X	-	-	X	-	-	-	T	1011-3011	62.62	-12.91	22

E-SURFMAR DB Monthly Report November 2014

6400525	60175710	MSB	EU	720	-	-	X	X	X	-	-	X	-	-	-	T	0111-3011	69.45	-6.83	471
6400526	61611070	MSB	EU	445	-	-	X	X	X	-	-	X	-	-	-	T	1211-3011	59.96	-32.50	20
6400527	61514840	MSB	EU	424	-	-	X	X	X	-	-	X	-	-	-	T	1211-3011	60.43	-30.12	19
6400607	11479100	MSB	EU	720	-	-	X	X	X	-	-	X	-	-	-	T	0111-3011	75.26	14.67	753
6400613	60174710	MSB	EU	720	-	-	X	X	X	-	-	X	-	-	-	T	0111-3011	71.25	14.20	456
6400614	60178700	MSB	EU	719	-	-	X	X	X	-	-	X	-	-	-	T	0111-3011	57.51	-47.06	452
6400615	60173700	MSB	EU	720	-	-	X	X	X	-	-	X	-	-	-	T	0111-3011	73.14	18.02	387
6400622	60172810	MSB	EU	720	-	-	X	X	X	-	-	X	-	-	-	T	0111-3011	65.66	-4.25	472
6400623	11470040	MSB	EU	720	-	-	X	X	X	-	-	X	-	-	-	T	0111-3011	74.98	17.81	568
6400665	60171710	MSB	EU	720	-	-	X	X	X	-	-	X	-	-	-	T	0111-3011	72.34	1.96	368
6400666	60179710	MSB	EU	720	-	-	X	X	X	-	-	X	-	-	-	T	0111-3011	70.80	-0.08	368
6400667	61615060	MSB	EU	639	-	-	X	X	X	-	-	X	-	-	-	T	0111-3011	62.54	-29.01	340
6400668	60177860	MSB	EU	720	-	-	X	X	X	-	-	X	-	-	-	T	0111-3011	74.09	11.22	344
6400669	60177710	MSB	EU	720	-	-	X	X	X	-	-	X	-	-	-	T	0111-3011	65.00	-23.09	340
6400691	61514870	MSB	EU	719	-	-	X	X	X	-	-	X	-	-	-	T	0111-3011	59.22	-58.94	296
6400692	60172720	MSB	EU	720	-	-	X	X	X	-	-	X	-	-	-	T	0111-3011	66.27	1.63	283
6500595	11595570	MSB	EU	720	-	-	X	X	X	-	-	X	-	-	-	T	0111-3011	62.34	-59.30	167
6500596	61511850	MSB	EU	719	-	-	X	X	X	-	-	X	-	-	-	T	0111-3011	53.71	-51.20	165
6500597	11595650	MSB	EU	720	-	-	X	X	X	-	-	X	-	-	-	T	0111-3011	59.81	-39.80	171

----- Drifting buoys which ceased to be operational

WMO	Telcom	Typ	Ow	End_Date	Lat	Lon	Age	Cause
2500652	60176700	MSB	EU	20141119	82.7	75.5	439	AP measurements failed again
4400767	11919510	MSB	EU	20141028	32.0	-56.1	1005	AP measurements failed
4400874	60213460	PSB	UP	20141113	37.6	-8.8	487	Ashore in Portugal
4400879	60554620	PSB	UP	20141119	45.7	-1.2	288	Ashore in France
6200538	11460700	MSB	UP	20141124	58.5	-42.2	167	AP measurements failed
6300641	61665210	MSB	EU	20141125	73.9	42.7	55	AP measurements failed
6400664	60176710	MSB	EU	20141112	66.0	-14.7	352	Ashore in Iceland
6400670	61513850	MSB	EU	20141127	61.9	-68.9	293	AP measurements failed
6500598	11792240	MSB	E2	20141125	48.2	-36.3	154	AP measurements failed

----- Non-operating drifting buoys reporting GTS data

WMO	Telcom	Typ	Ow	nobs	Wi	AT	AP	dP	ST	Wa	Ws	Dr	Sb	U	SS	O	Start_end	Lat	Lon	Age
2500652	60176700	MSB	EU	648	-	-	S	S	X	-	-	X	-	-	-	T	0411-3011	82.70	75.49	450
4400767	11919510	MSB	EU	720	-	-	S	S	X	-	-	X	-	-	-	T	0111-3011	31.99	-56.11	1039
6200538	11460700	MSB	UP	720	-	-	S	S	X	-	-	X	-	-	-	T	0111-3011	58.46	-42.17	174
6300641	61665210	MSB	EU	720	-	-	S	S	X	-	-	X	-	-	-	T	0111-3011	73.89	42.74	61
6400670	61513850	MSB	EU	717	-	-	S	S	X	-	-	X	-	-	-	T	0111-3011	61.88	-68.93	297
6500598	11792240	MSB	E2	720	-	-	S	S	X	-	-	X	-	-	-	T	0111-3011	48.24	-36.28	159

----- Other operating drifting buoys inside the EUMETNET by the end of the month

WMO	Telcom	Typ	Ow	nobs	Wi	AT	AP	dP	ST	Wa	Ws	Dr	Sb	U	SS	O	Start_end	Lat	Lon
1300569	114880	AOML		666	-	-	X	-	X	-	-	X	-	-	-	L	0111-3011	31.83	-29.38
1300570	116474	AOML		714	-	-	X	-	X	-	-	X	-	-	-	L	0111-3011	35.05	-29.25
1300572	127002	AOML		710	-	-	X	X	X	-	-	X	-	-	-	L	0111-3011	35.51	-29.45
1300590	139285	AOML		709	-	-	X	X	X	-	-	X	-	-	-	L	0111-3011	34.59	-30.95
1300633	109491	AOML		695	-	-	X	X	X	-	-	X	-	-	-	L	0111-3011	33.10	-30.78
1300659	11910180	UKMO		720	-	-	X	X	X	-	-	X	-	-	-	T	0111-3011	24.75	-47.69
1300660	11022040	UKMO		720	-	-	X	X	X	-	-	X	-	-	-	T	0111-3011	32.55	-55.64
1300662	11098800	UKMO		720	-	-	X	X	X	-	-	X	-	-	-	T	0111-3011	25.11	-38.69
1300664	11090810	UKMO		718	-	-	X	X	X	-	-	X	-	-	-	T	0111-3011	24.39	-45.76
1300668	60897010	UKMO		714	-	-	X	X	X	-	-	X	-	-	-	T	0111-3011	2.37	5.70
1500549	60794980	UKMO		720	-	-	X	X	X	-	-	X	-	-	-	T	0111-3011	6.46	-29.35
2100942	119223	AOML		714	-	-	X	X	X	-	-	X	-	-	-	L	0111-3011	32.31	-26.40
2500540				337	-	-	X	X	X	-	-	-	-	-	-	L	1411-2811	89.10	-69.67
2500585	11246950	APL		715	-	-	X	X	X	-	-	X	-	-	-	T	0111-3011	85.54	-55.89
2600535	971540	PSC		592	-	-	X	X	X	-	-	-	-	-	-	O	0111-3011	76.91	21.20
3100717	61614160	CMM		719	-	-	X	X	X	-	-	X	-	-	-	T	0111-3011	15.53	-50.06
3100862	61213570	LOCE		1439	-	-	X	X	X	-	-	X	-	-	X	T	0111-3011	3.30	0.12
3100863	61611040	CMM		719	-	-	X	X	X	-	-	X	-	-	-	T	0111-3011	20.14	-47.83
4100560	114550	AOML		718	-	-	X	-	-	-	-	X	-	-	-	L	0111-3011	34.63	-18.86
4100564	109221	AOML		709	-	-	X	-	X	-	-	X	-	-	-	L	0111-3011	29.27	-40.24

E-SURFMAR DB Monthly Report November 2014

4100596	11473050	EUME	720	-	-	X	X	X	-	-	X	-	-	-	T	0111-3011	21.18	-57.71
4100597	61512840	AOML	719	-	-	X	X	X	-	-	X	-	-	-	T	0111-3011	20.95	-49.04
4100598	61610040	AOML	719	-	-	X	X	X	-	-	X	-	-	-	T	0111-3011	21.87	-46.95
4100599	61615070	AOML	719	-	-	X	X	X	-	-	X	-	-	-	T	0111-3011	15.94	-59.44
4100600	61618040	AOML	719	-	-	X	X	X	-	-	X	-	-	-	T	0111-3011	15.37	-53.12
4100612	123247	AOML	717	-	-	X	X	X	-	-	X	-	-	-	L	0111-3011	30.66	-67.25
4100632	11474050	EUME	720	-	-	X	X	X	-	-	X	-	-	-	T	0111-3011	24.59	-61.59
4100705	11596570	AOML	720	-	-	X	X	X	-	-	X	-	-	-	T	0111-3011	31.41	-52.53
4100706	11595580	AOML	720	-	-	X	X	X	-	-	X	-	-	-	T	0111-3011	26.56	-66.18
4100709	11598570	AOML	720	-	-	X	X	X	-	-	X	-	-	-	T	0111-3011	30.02	-66.02
4100711	11477030	EUME	720	-	-	X	X	X	-	-	X	-	-	-	T	0111-3011	29.73	-50.84
4100737	60342390	CMM	720	-	-	X	X	X	-	-	X	-	-	X	T	0111-3011	25.66	-53.62
4100800	60547830	CMM	703	-	-	X	X	X	-	-	X	-	-	X	T	0111-3011	22.57	-46.71
4100933	101721	AOML	718	-	-	X	X	X	-	-	X	-	-	-	L	0111-3011	33.49	-61.49
4100936	109488	AOML	622	-	-	X	X	X	-	-	X	-	-	-	L	0111-3011	30.47	-65.17
4100938	109437	AOML	712	-	-	X	X	X	-	-	X	-	-	-	L	0111-3011	35.82	-62.01
4100975	109439	AOML	658	-	-	X	X	X	-	-	X	-	-	-	L	0111-3011	37.14	-49.46
4400505	98087	ICEP	1532	-	-	X	X	X	-	-	-	-	-	-	L	0111-3011	42.71	-30.91
4400516	114599	AOML	623	-	-	X	X	X	-	-	X	-	-	-	L	0111-3011	28.16	-57.86
4400554	126479	AOML	711	-	-	X	X	X	-	-	X	-	-	-	L	0111-3011	30.83	-38.69
4400558	123286	AOML	718	-	-	X	X	X	-	-	X	-	-	-	L	0111-3011	31.75	-61.04
4400560	126480	AOML	715	-	-	X	X	X	-	-	X	-	-	-	L	0111-3011	41.76	-47.47
4400896	109438	AOML	699	-	-	X	X	X	-	-	X	-	-	-	L	0111-3011	35.84	-36.94
4700503			722	-	-	X	X	-	-	-	-	-	-	-	L	0111-3011	86.73	-31.44
4700577	11096790	EC/M	720	-	X	X	-	-	-	-	-	-	-	-	O	0111-3011	83.61	-49.65
4700579	11097780	EC/M	720	-	-	X	X	X	-	-	-	-	-	-	O	0111-3011	60.20	-37.39
4700585	11541430	EC	720	-	-	X	X	X	-	-	S	-	-	-	O	0111-3011	68.22	-66.65
4700586	11541440	EC	720	-	-	X	X	X	-	-	X	-	-	-	O	0111-3011	64.19	-59.38
4800568	61363210	PSC	720	-	-	X	X	X	-	-	-	-	-	-	O	0111-3011	80.14	-5.10
4800597	100009	PSC	562	X	X	X	-	-	-	-	X	-	-	-	O	0111-3011	85.56	-55.62
4800627			610	-	-	X	X	-	-	-	-	-	-	-	L	0511-3011	87.90	-49.20
4800680	60233160	APL	719	-	-	X	X	X	-	-	X	-	-	-	T	0111-3011	73.43	34.54
4800778	60894080	EC	720	-	-	X	X	-	-	-	-	-	-	-	O	0111-3011	87.16	-40.67
4800779	60890090	EC	720	-	-	X	X	-	-	-	-	-	-	-	O	0111-3011	85.68	-21.18
6202603		BSH	715	X	X	X	X	-	-	-	-	-	X	-	O	0111-3011	55.20	7.20
6202604		BSH	518	X	-	-	-	-	-	-	-	-	-	-	O	0111-3011	54.00	6.60
6300546	61361200	PSC	720	-	-	X	X	X	-	-	X	-	-	-	O	0111-3011	80.74	6.28
6400532			721	-	-	X	X	X	-	-	-	-	-	-	L	0111-3011	78.52	-2.25
6400533			720	-	-	X	X	-	-	-	-	-	-	-	L	0111-3011	82.78	-11.68
6400534			721	-	-	X	X	X	-	-	-	-	-	-	L	0111-3011	80.39	-6.82
6400535			720	-	-	X	X	X	-	-	-	-	-	-	L	0111-3011	84.75	-22.65

Abbreviations

WMO : WMO id.
 Argos : Argos id.
 Typ : Buoy type
 - first character : Manufacturer (C = ConMar , M = Metocean, P = Pacific Gyre
 T = Technocean, Y = Marlin-Yug...)
 - second character : Main type (F = FGGE, I = ICEB, S = SVP)
 - third character : Sub type (B = barometer buoy, W = Wind buoy,
 S = Salinity buoy)
 Ow : Buoy owner (country code or EU for EUCOS, E2 for HRSST-2 buoys, UP for upgraded
 buoys)
 Owner : Buoy owner for non EUCOS buoys
 Nobs : number of GTS reports received at Meteo-France
 Parameters (X = OK, S = stopped, - = not measured) :
 Wi : Wind
 AT : Air Temperature
 AP : Air Pressure
 dP : Air pressure tendency
 ST : Sea surface Temperature
 Wa : Wave period and height
 Ws : Wave spectra
 Dr : Drogue presence
 Sb : Subsurface temperature
 U : Relative humidity
 SS : Sea surface Salinity
 O : Origin of the reports (T = Argos Toulouse, L = Argos Largo, O = Other)
 Start_end : first and last dates of the month for which GTS data were received at Meteo-France
 Lat : Latitude of the latest position
 Lon : Longitude of the latest position
 Age : Age of the buoy (days)

 DepDate : Date of deployment
 DepLat : Latitude of deployment
 Dep Lon : Longitude of Deployment
 From : Harbour of departure

Definition : An operating drifting buoy is a buoy providing at least air pressure or wind
 (direction and velocity) data.

MOORED BUOYS

Former EGOS stations (K-pattern and Hydrosphere)

WMO	Name	nobs	Wi	AT	AP	dP	ST	Wa	Ws	Dr	Sb	U	SS	O	Start_end	Lat	Lon
6100001	Cote d'Azur	718	X	X	X	X	X	X	X	-	-	X	-	T	0111-3011	43.40	7.80
6100002	Lion	713	X	X	X	X	X	X	X	-	-	X	-	T	0111-3011	42.10	4.70
6200001	Gascogne	720	X	X	X	X	X	X	-	-	-	X	-	O	0111-3011	45.30	-5.00
6200029	K1	672	X	X	X	-	X	X	-	-	-	X	-	O	0111-3011	48.70	-12.50
6200081	K2	720	X	X	X	X	X	X	-	-	-	X	-	O	0111-3011	51.00	-13.20
6200090	M1	-	-	-	-	-	-	-	-	-	-	-	-	-	-	53.10	-11.20
6200091	M2	710	X	X	X	-	X	X	-	-	-	X	-	O	0111-3011	53.50	-5.40
6200092	M3	129	S	S	S	-	S	S	-	-	-	S	-	-	0111-0611	51.20	-10.50
6200093	M4	710	X	X	X	-	X	X	-	-	-	-	-	O	0111-3011	54.70	-9.10
6200094	M5	151	X	X	X	-	X	X	-	-	-	X	-	O	2411-3011	51.70	-6.70
6200095	M6	641	-	X	X	X	-	X	-	-	-	X	-	O	0111-3011	53.10	-15.90
6200105	K4	720	X	X	X	X	X	X	-	-	-	X	-	O	0111-3011	55.80	-11.40
6200108	K3	-	-	-	-	-	-	-	-	-	-	-	-	-	-	53.50	-19.50
6200163	Brittany	720	X	X	X	X	X	X	X	-	-	X	-	O	0111-3011	47.50	-8.40
6400045	K5	720	X	X	X	X	X	X	X	-	-	X	-	O	0111-3011	59.10	-11.70
6400046	K7	715	X	X	X	-	X	X	-	-	-	X	-	O	0111-3011	60.70	-5.20

Comments:
 - EUMETNET moored buoys are presented in bold characters.

E-SURFMAR DB Monthly Report November 2014

----- Former EGOS moored buoys (Spanish SeaWatch and WaveScan)

WMO	Name	nobs	Wi	AT	AP	dP	ST	Wa	Ws	Dr	Sb	U	SS	O	Start_end	Lat	Lon
1300130	Gran Canaria	668	X	X	X	-	X	X	X	-	-	-	X	O	0111-2811	28.18	-15.82
1300131	Tenerife Sur	443	X	X	X	-	-	X	X	-	-	-	-	O	1211-3011	28.00	-16.58
6100196	C. Begur	-	-	-	-	-	-	-	-	-	-	-	-	-	-	41.92	3.65
6100197	Mahon	718	X	X	X	-	-	X	X	-	-	-	-	O	0111-3011	39.72	4.42
6100198	C. de Gata	663	X	X	X	-	X	X	X	-	-	-	X	O	0111-2911	36.57	-2.33
6100280	Tarragona	23	S	S	S	-	S	S	-	-	-	-	S	-	0111-1511	40.77	1.47
6100281	Valencia	679	X	X	X	-	X	X	X	-	-	-	X	O	0111-3011	39.47	-0.27
6100417	C. de Palos	718	X	X	X	-	X	X	X	-	-	-	X	O	0111-3011	37.65	-0.32
6100430	Dragonera	718	X	X	X	-	X	X	X	-	-	-	-	O	0111-3011	39.56	2.11
6200024	Bilbao-Visc.	718	X	X	X	-	X	X	X	-	-	-	X	O	0111-3011	43.63	-3.03
6200025	C. de Penas	698	X	X	X	-	X	X	X	-	-	-	X	O	0111-3011	43.73	-6.17
6200082	E. de Bares	314	X	X	X	-	X	X	X	-	-	-	X	O	0111-3011	44.13	-7.69
6200083	Villano-Sis.	673	X	X	X	-	X	X	X	-	-	-	X	O	0111-3011	43.48	-9.22
6200084	C. Silleiro	718	X	X	X	-	X	X	X	-	-	-	X	O	0111-3011	42.12	-9.43
6200085	G. de Cadiz	688	X	X	X	-	X	X	X	-	-	-	X	O	0111-3011	36.48	-6.97
6201030	Santander	-	-	-	-	-	-	-	-	-	-	-	-	-	-	43.84	-3.77

Comments:

- The EUMETNET buoy is presented in bold characters.

----- Operating ISPRA moored buoys (Italy)

WMO	Name	nobs	Wi	AT	AP	dP	ST	Wa	Ws	Dr	Sb	U	SS	O	Start_end	Lat	Lon
6100207		1010	-	-	X	-	X	X	-	-	-	-	-	O	0111-3011	37.44	15.15
6100208		-	-	-	-	-	-	-	-	-	-	-	-	-	-	37.52	12.53
6100209		-	-	-	-	-	-	-	-	-	-	-	-	-	-	38.26	13.33
6100210		1013	-	-	X	-	X	X	-	-	-	-	-	O	0111-3011	39.02	17.22
6100211		1034	-	-	X	-	X	X	-	-	-	-	-	O	0111-3011	39.45	15.92
6100212		-	-	-	-	-	-	-	-	-	-	-	-	-	-	40.62	9.89
6100213		31	-	-	S	-	S	S	-	-	-	-	-	-	1211-2011	40.55	8.11
6100214		638	-	-	X	-	X	X	-	-	-	-	-	O	0111-3011	40.87	12.95
6100215		1035	-	-	-	-	X	X	-	-	-	-	-	O	0111-3011	40.98	17.38
6100216		883	-	-	X	-	X	X	-	-	-	-	-	O	0411-3011	42.24	11.55
6100218		-	-	-	-	-	-	-	-	-	-	-	-	-	-	43.83	13.72
6100219		884	-	-	X	-	X	X	-	-	-	-	-	O	0111-2811	43.93	9.83
6100220		407	-	-	X	-	X	X	-	-	-	-	-	O	0111-3011	45.33	12.52
6100221		1039	-	-	X	-	X	X	-	-	-	-	-	O	0111-3011	39.12	9.40

----- Operating POSEIDON moored buoys (Greece)

WMO	Name	nobs	Wi	AT	AP	dP	ST	Wa	Ws	Dr	Sb	U	SS	O	Start_end	Lat	Lon
6101000		-	-	-	-	-	-	-	-	-	-	-	-	-	-	39.10	24.50
6101001		215	X	X	X	-	X	X	-	-	-	-	-	O	0111-3011	37.60	23.60
6101002		-	-	-	-	-	-	-	-	-	-	-	-	-	-	37.00	22.10
6101003		234	X	-	X	-	X	X	-	-	-	-	-	O	0111-3011	40.00	24.70
6101004		-	-	-	-	-	-	-	-	-	-	-	-	-	-	39.10	25.80
6101005		-	-	-	-	-	-	-	-	-	-	-	-	-	-	37.50	25.50
6101006		-	-	-	-	-	-	-	-	-	-	-	-	-	-	36.30	25.50
6101007		237	X	X	X	-	X	X	-	-	-	-	-	O	0111-3011	35.80	24.90
6101008		170	X	X	X	-	X	X	-	-	-	-	-	O	0111-3011	36.80	21.60
6101009		-	-	-	-	-	-	-	-	-	-	-	-	-	-	38.00	20.60

----- Other European moored buoys (operated by 3rd parties)

WMO	Name	nobs	Wi	AT	AP	dP	ST	Wa	Ws	Dr	Sb	U	SS	O	Start_end	Lat	Lon
1200050	Cycofos	-	-	-	-	-	-	-	-	-	-	-	-	-	-	33.60	31.90
6100010	Italia-1	-	-	-	-	-	-	-	-	-	-	-	-	-	-	43.80	9.10
6200027	Jersey	244	X	-	X	X	-	X	-	-	-	-	-	O	0111-3011	49.08	-22.20
6200030	L4	698	X	X	X	-	-	-	-	-	-	X	-	O	0111-3011	50.25	-4.22
6200050	E1	145	X	X	X	-	S	X	-	-	-	X	-	O	1011-3011	50.04	-4.37
6200086	NSB II	25	X	X	X	X	X	-	-	-	-	X	-	O	0211-2911	55.00	6.40
6200087	NSB III	-	-	-	-	-	-	-	-	-	-	-	-	-	-	54.70	6.80
6200191	Porto	227	X	X	X	-	-	X	-	-	-	-	-	O	2111-3011	41.15	-9.57
6200192	Peniche	226	X	X	X	-	-	X	-	-	-	-	-	O	2111-3011	39.50	-9.65
6200303	Turbo Bank	691	-	-	-	-	-	X	-	-	-	-	-	O	0111-3011	51.60	-5.10

E-SURFMAR DB Monthly Report November 2014

6200442	PAP	720	X	-	X	-	-	S	-	-	-	-	-	O	0111-3011	49.00	-16.40
6600021	Arkona Becken	710	X	X	-	-	X	X	-	-	-	-	-	O	0111-3011	54.90	13.90
6600022	Oder Bank	651	X	X	-	-	X	-	-	-	-	-	-	O	0111-3011	54.10	14.20
6600024	Darsser Schwelle	710	X	X	-	-	X	X	-	-	-	-	-	O	0111-3011	54.70	12.70

Other offshore moored buoys inside the EUMETNET area

WMO	Name	nobs	Wi	AT	AP	dP	ST	Wa	Ws	Dr	Sb	U	SS	O	Start_end	Lat	Lon
1300001		499	X	X	X	-	X	-	-	-	-	X	X	L	0111-3011	11.47	-23.00
1300008		423	X	X	X	-	X	-	-	-	-	X	-	L	0111-3011	14.98	-38.02
1300308	East Atlantic	-	-	-	-	-	-	-	-	-	-	-	-	-		15.00	-38.00
4100026		377	X	X	-	-	X	-	-	-	-	X	-	L	0111-3011	11.49	-38.40
4100040	West Atlantic	713	X	X	X	X	X	X	-	-	-	X	-	O	0111-3011	14.50	-53.00
4100041	Mid. Atlantic	708	X	X	X	X	X	X	-	-	-	-	-	O	0111-3011	14.50	-46.00
4100043	Porto Rico	705	X	X	X	X	X	X	-	-	-	X	-	O	0111-3011	21.00	-65.00
4100044		716	X	X	X	X	X	X	-	-	-	X	-	O	0111-3011	21.70	-58.70
4100046		718	X	X	X	X	X	X	-	-	-	X	-	O	0111-3011	23.90	-70.90
4100047		-	-	-	-	-	-	-	-	-	-	-	-	-		27.50	-71.50
4100048		717	X	X	X	X	X	X	-	-	-	X	-	O	0111-3011	32.00	-69.60
4100049		720	X	X	X	X	X	X	-	-	-	X	-	O	0111-3011	27.50	-53.00
4100139		489	X	X	X	-	X	-	-	-	-	X	-	L	0111-3011	20.02	-37.86
4100300	Antilles	-	-	-	-	-	-	-	-	-	-	-	-	-		15.85	-57.47
4200059	Caraibes	143	S	S	S	S	S	S	-	-	-	S	-		0111-0611	15.00	-67.50
4400008	A Nantucket	-	-	-	-	-	-	-	-	-	-	-	-	-		40.50	-69.40
4400011	D Georges Bk	-	-	-	-	-	-	-	-	-	-	-	-	-		41.10	-66.60
4400018	SE Cape Cod	-	-	-	-	-	-	-	-	-	-	-	-	-		41.30	-69.30
4400024	NNE Channel	641	X	X	X	-	X	X	-	-	-	-	-	O	0111-3011	42.30	-65.90
4400137	E Scotia Sl.	712	X	X	X	X	X	X	-	-	-	-	-	O	0111-3011	42.30	-62.00
4400138	SW Gd Banks	-	-	-	-	-	-	-	-	-	-	-	-	-		44.30	-53.60
4400139	Beanquereau	712	X	X	X	X	X	X	-	-	-	-	-	O	0111-3011	44.30	-57.10
4400140	Tail of Bk	-	-	-	-	-	-	-	-	-	-	-	-	-		43.80	-51.70
4400141	Larentian F	704	X	X	X	X	X	X	-	-	-	-	-	O	0111-3011	43.00	-58.00
4400150	La Have Bk	705	X	X	X	X	X	X	-	-	-	-	-	O	0111-3011	42.50	-64.00

E-SURFMAR DB Monthly Report November 2014

Buoy-QC statistics from Meteo-France model outputs

Datend : Date of the last value received on GTS
Recvd : Total number of values received on GTS
GE : Number of Gross Errors (excluded from bias and sd computations)
bias : Mean differences between observation values and co-located model output values
Std : Standard deviation of differences

Air Pressure (hPa), drifting buoys, November 2014

Datend	WMO	Telcom	Recvd	GE	Bias	Std
20141130	1300868	11686410	223	0	0.1	0.6
20141130	1300869	11688410	189	0	0.0	0.6
20141130	2500615	61660360	720	0	0.4	0.4
20141130	2500616	61762070	720	0	-0.1	0.4
20141130	2500617	61767070	720	0	-0.8	0.6
20141130	2500620	61760090	721	0	0.0	0.5
20141130	2500624	60247420	720	0	0.1	0.5
20141130	2500648	60370080	720	0	-0.3	0.5
20141119	2500652	60176700	373	38	-0.4	1.2
20141130	4100969	60213780	534	0	-0.4	0.4
20141130	4100970	60213790	707	0	0.4	0.6
20141130	4100971	60215900	719	0	-0.0	0.4
20141130	4100972	60217780	719	0	0.0	0.3
20141130	4400546	11160640	720	0	-0.2	0.4
20141130	4400547	60173710	720	0	0.4	1.5
20141130	4400548	11799230	717	0	0.3	0.8
20141130	4400549	60896130	719	0	-0.0	0.7
20141130	4400550	60894140	719	0	-0.2	0.9
20141130	4400551	60892140	719	0	0.2	0.9
20141130	4400601	60890150	719	0	-0.4	0.8
20141130	4400602	11468700	720	0	-0.2	0.7
20141130	4400603	11793230	719	0	0.2	0.7
20141130	4400604	11794240	710	0	0.1	0.7
20141130	4400605	11473110	720	0	-0.3	0.5
20141130	4400606	11162640	720	0	-0.0	0.6
20141130	4400608	11093800	708	0	0.1	0.6
20141130	4400610	61517860	719	0	-0.1	0.7
20141130	4400612	61511880	700	3	-0.3	1.1
20141130	4400613	11475040	714	0	-0.3	0.5
20141130	4400614	61661340	715	0	-0.3	0.9
20141130	4400615	61666340	719	0	-1.0	0.6
20141130	4400620	61667370	719	0	0.1	0.7
20141130	4400621	61519840	689	0	0.3	0.7
20141130	4400622	61668320	719	0	0.0	0.6
20141130	4400624	11341110	715	0	-0.0	0.6
20141130	4400625	61668340	628	0	0.0	0.7
20141130	4400725	11027170	653	20	0.4	1.4
20141130	4400739	61516840	719	0	0.4	0.8
20141130	4400740	11883820	418	0	-0.2	0.4
20141130	4400747	61610060	691	0	-0.3	0.7
20141130	4400765	11685410	717	5	0.4	1.3
20141103	4400767	11919510	57	0	-6.2	1.0
20141130	4400773	60211790	602	0	0.1	0.3
20141130	4400774	61477400	328	0	0.7	0.8
20141130	4400775	61476400	327	0	0.6	0.6
20141130	4400776	61474410	328	0	0.7	0.7
20141130	4400777	61475420	297	0	0.1	0.5
20141130	4400778	61475430	303	0	0.5	0.5
20141130	4400779	11885820	279	0	0.2	0.7
20141130	4400835	60218770	717	0	-0.3	0.4
20141130	4400836	60218680	719	0	-0.1	0.7
20141130	4400837	60209590	718	0	-0.1	0.6
20141130	4400839	60205090	718	0	-0.1	0.5
20141130	4400840	60208710	720	0	0.1	0.6
20141130	4400846	60441290	718	0	0.4	0.4
20141130	4400847	60442280	719	0	0.3	0.7
20141130	4400848	60448280	718	0	0.2	0.5
20141130	4400863	60211690	664	0	-0.0	0.3
20141130	4400866	11793240	715	0	-0.3	0.8
20141130	4400867	11593590	720	0	-0.2	0.7
20141130	4400868	11794230	720	0	0.1	0.5
20141130	4400871	11790240	720	0	-0.1	0.7

E-SURFMAR DB Monthly Report November 2014

20141130	4400872	60202920	720	0	-0.3	0.6
20141114	4400874	60213460	302	0	0.2	0.6
20141130	4400876	60648350	719	0	0.7	0.5
20141130	4400877	60526170	719	0	-0.1	0.5
20141130	4400878	60528170	719	0	-0.0	0.5
20141119	4400879	60554620	443	0	-0.3	0.6
20141130	4400880	60556880	716	0	-0.2	0.7
20141130	4400885	60218780	720	0	-0.1	0.5
20141130	4400887	60251440	719	0	0.1	0.5
20141130	4400888	60359010	719	0	-0.2	0.5
20141130	4400889	60202320	629	0	-0.0	0.4
20141130	4400890	12000230	650	0	-0.1	0.5
20141130	4400891	12007220	689	0	-0.1	0.4
20141130	4400892	60018400	680	0	-0.2	0.7
20141130	6200514	60203700	720	0	-0.1	0.4
20141130	6200516	11475100	720	0	0.3	0.5
20141130	6200536	11599570	720	0	-0.1	0.6
20141130	6200537	11791240	717	0	-0.2	0.7
20141124	6200538	11460700	566	1	0.1	1.4
20141130	6200539	60891140	719	0	-0.0	0.8
20141130	6200551	60897120	719	0	-0.3	0.7
20141130	6200552	11797240	719	0	0.1	0.7
20141130	6200553	11165650	720	0	0.1	0.4
20141130	6200681	11168640	720	0	-0.2	0.6
20141130	6200687	11349100	719	0	-0.3	1.1
20141130	6200695	60408990	720	0	0.2	0.4
20141130	6200713	11246980	704	0	-0.1	0.4
20141130	6200714	11240980	716	0	-0.2	0.4
20141130	6200940	60203850	709	0	0.0	0.4
20141130	6200941	60207590	675	0	-0.1	0.4
20141130	6300640	60172710	720	19	-0.8	1.7
20141125	6300641	61665210	277	11	-0.4	2.2
20141130	6300644	61766070	557	14	-0.6	2.2
20141130	6400516	11473100	601	49	-0.4	1.1
20141130	6400517	61619060	412	0	0.1	0.8
20141130	6400518	60892150	408	0	-0.2	0.9
20141130	6400520	11479040	720	0	-0.2	0.4
20141130	6400521	11470030	721	3	-0.2	0.9
20141130	6400522	61511870	588	0	-0.1	0.6
20141130	6400523	61510870	487	0	-0.0	0.7
20141130	6400524	61619040	487	0	-0.2	0.7
20141130	6400525	60175710	720	0	0.0	0.5
20141130	6400526	61611070	445	0	-0.3	0.7
20141130	6400527	61514840	424	0	0.2	0.7
20141130	6400607	11479100	720	0	-0.3	0.7
20141130	6400613	60174710	720	0	-0.1	0.4
20141130	6400614	60178700	719	1	-0.1	0.6
20141130	6400615	60173700	720	0	0.2	0.4
20141130	6400622	60172810	720	0	-0.0	0.5
20141130	6400623	11470040	720	0	-0.0	0.6
20141112	6400664	60176710	286	0	-0.0	0.4
20141130	6400665	60171710	720	0	0.2	0.4
20141130	6400666	60179710	720	0	0.3	0.4
20141130	6400667	61615060	639	0	-0.3	0.6
20141130	6400668	60177860	720	5	-0.1	1.0
20141130	6400669	60177710	720	0	0.2	0.9
20141127	6400670	61513850	634	16	0.6	1.5
20141130	6400691	61514870	719	0	0.3	0.5
20141130	6400692	60172720	720	0	0.3	0.5
20141130	6500595	11595570	720	0	-0.4	0.4
20141130	6500596	61511850	719	0	0.2	1.0
20141130	6500597	11595650	720	0	-0.0	0.6
20141125	6500598	11792240	589	21	-0.4	2.0

Air Pressure (hPa), moored buoys, November 2014

Datend	WMO	Telcom	Recvd	GE	Bias	Std
20141128	1300130		668	0	1.5	1.8
20141130	1300131		443	0	-0.7	1.1
20141130	6100001		717	0	-0.7	0.6
20141130	6100002		713	0	0.0	0.6
20141130	6100197		718	0	-0.2	0.6
20141129	6100198		663	0	0.8	0.8
20141130	6100207		1010	0	0.7	0.8

**E-SURFMAR DB Monthly Report
November 2014**

20141130	6100210	1013	0	0.1	0.9
20141130	6100211	1034	0	0.4	0.6
20141130	6100213	31	0	4.1	0.7
20141130	6100214	638	1	0.2	0.5
20141130	6100216	883	0	0.2	0.6
20141128	6100219	884	0	-0.5	0.6
20141130	6100220	407	0	-0.4	0.7
20141130	6100221	1039	0	-0.2	0.6
20141115	6100280	23	0	0.3	0.7
20141130	6100281	679	0	-0.2	0.9
20141130	6100417	718	0	0.4	0.7
20141130	6100430	718	0	0.4	0.6
20141130	6101001	215	0	0.6	0.6
20141130	6101003	234	0	1.0	0.6
20141130	6101007	237	0	0.2	0.6
20141130	6101008	170	0	0.1	0.7
20141130	6200001	720	0	0.1	0.6
20141130	6200024	718	0	0.2	0.7
20141130	6200025	698	0	0.2	0.7
20141130	6200027	239	1	-0.1	0.5
20141130	6200029	672	0	0.0	0.6
20141130	6200030	696	0	-0.2	0.6
20141130	6200050	145	0	0.2	0.5
20141130	6200081	720	0	0.1	0.6
20141130	6200082	314	0	0.2	0.7
20141130	6200083	673	0	0.0	0.8
20141130	6200084	718	0	0.2	0.7
20141130	6200085	688	0	0.4	0.7
20141129	6200086	23	0	-0.4	0.5
20141130	6200091	710	0	-0.3	0.8
20141106	6200092	129	1	-0.1	0.6
20141130	6200093	710	1	-0.0	0.6
20141130	6200094	151	0	-0.2	0.5
20141130	6200095	641	26	-0.1	1.0
20141130	6200105	718	0	-0.0	0.5
20141130	6200163	720	0	-0.0	0.6
20141130	6200191	226	0	-0.1	0.6
20141130	6200192	226	0	0.1	0.6
20141130	6200442	720	0	-0.2	0.8
20141130	6400045	720	0	0.1	0.5
20141130	6400046	715	0	0.3	0.6

Air Temperature (C), moored buoys, November 2014

Datend	WMO	Telcom	Recvd	GE	Bias	Std
20141128	1300130		666	0	-1.1	0.6
20141130	1300131		443	0	1.0	0.7
20141130	6100001		717	0	-0.4	0.7
20141130	6100002		713	0	0.1	0.6
20141130	6100197		718	0	0.4	0.6
20141129	6100198		663	0	-0.4	1.0
20141114	6100280		18	0	0.3	0.3
20141130	6100281		679	0	0.6	0.7
20141130	6100417		717	0	-0.1	0.5
20141130	6100430		718	0	0.3	0.6
20141130	6101001		215	0	0.1	0.6
20141130	6101007		237	0	1.6	0.5
20141130	6101008		170	0	-0.1	0.8
20141130	6200001		720	0	-0.5	0.6
20141130	6200024		716	0	0.2	0.9
20141130	6200025		698	0	-0.7	0.9
20141130	6200029		672	0	-0.3	0.6
20141130	6200030		698	0	-0.6	0.6
20141130	6200050		145	0	0.1	0.4
20141130	6200081		720	0	-0.3	0.6
20141130	6200082		314	0	-0.4	0.6
20141130	6200083		673	0	-0.5	0.7
20141130	6200084		718	0	-0.0	0.7
20141130	6200085		688	0	-0.0	0.7
20141129	6200086		24	0	-0.3	0.8
20141130	6200091		710	0	0.0	0.5
20141106	6200092		129	0	-0.4	0.5
20141130	6200093		710	0	0.0	0.7
20141130	6200094		151	0	0.3	0.5
20141130	6200095		604	0	-0.6	0.6

**E-SURFMAR DB Monthly Report
November 2014**

20141130	6200105	720	0	-0.3	0.5
20141130	6200163	720	0	-0.3	0.6
20141130	6200191	227	0	-0.2	0.5
20141130	6200192	226	0	0.0	0.6
20141130	6400045	720	0	-0.1	0.5
20141130	6400046	715	0	-0.0	0.4
20141130	6600021	710	0	0.2	0.7
20141130	6600022	651	0	0.5	0.7
20141130	6600024	709	0	0.3	0.8

Wind direction (deg.), moored buoys, November 2014

Datend	WMO	Telcom	Recvd	GE	Bias	Std
20141128	1300130		666	29	4	31
20141130	1300131		441	61	8	36
20141130	6100001		717	63	-7	29
20141130	6100002		711	15	-2	21
20141130	6100197		718	12	-13	19
20141129	6100198		660	28	-4	26
20141114	6100280		16	1	5	38
20141130	6100281		669	33	6	32
20141130	6100417		714	36	-9	25
20141130	6100430		716	27	-13	27
20141130	6101001		215	17	4	30
20141130	6101003		234	66	-28	51
20141130	6101007		234	79	-68	64
20141130	6101008		170	11	-3	36
20141130	6200001		719	0	-5	16
20141130	6200024		705	30	-2	27
20141130	6200025		692	25	-5	30
20141130	6200027		199	3	4	31
20141130	6200029		672	3	2	16
20141130	6200030		485	9	8	23
20141130	6200050		144	7	-0	22
20141130	6200081		720	2	-5	18
20141130	6200082		314	1	2	20
20141130	6200083		671	3	-1	19
20141130	6200084		716	13	-1	23
20141130	6200085		683	2	-3	23
20141129	6200086		19	0	7	9
20141130	6200091		710	11	4	20
20141106	6200092		129	1	3	18
20141130	6200093		709	7	4	18
20141130	6200094		151	4	3	22
20141130	6200105		720	6	-3	15
20141130	6200163		719	1	1	14
20141130	6200191		223	17	-1	23
20141130	6200192		225	4	4	16
20141130	6200442		720	11	-0	18
20141130	6400045		720	2	-9	14
20141130	6400046		714	0	8	16
20141130	6600021		710	4	-1	14
20141130	6600022		651	4	-9	15
20141130	6600024		696	6	3	14

Wind speed rate, moored buoys, November 2014

Datend	WMO	Telcom	Recvd	GE	Rate	Err
20141128	1300130		666	3	1.2	1.9
20141130	1300131		441	2	1.3	2.8
20141130	6100001		717	0	1.4	2.5
20141130	6100002		711	2	1.2	1.9
20141130	6100197		718	1	1.0	1.5
20141129	6100198		660	0	1.0	2.7
20141114	6100280		16	0	1.0	1.5
20141130	6100281		669	0	1.3	2.0
20141130	6100417		714	0	1.1	1.7
20141130	6100430		716	0	1.1	1.6
20141130	6101001		215	0	1.0	2.2
20141130	6101003		234	0	0.8	2.4
20141130	6101007		234	0	0.0	0.0
20141130	6101008		170	0	1.1	1.8
20141130	6200001		719	0	1.0	1.5

E-SURFMAR DB Monthly Report November 2014

20141130	6200024	705	0	1.2	1.9
20141130	6200025	692	0	0.8	2.5
20141130	6200027	199	0	1.0	1.3
20141130	6200029	672	0	1.0	1.4
20141130	6200030	485	0	0.9	1.7
20141130	6200050	144	0	1.1	1.4
20141130	6200081	720	0	1.0	1.3
20141130	6200082	314	0	1.0	1.6
20141130	6200083	671	0	0.9	1.6
20141130	6200084	716	1	1.0	1.7
20141130	6200085	683	0	0.9	1.8
20141129	6200086	19	0	1.1	0.8
20141130	6200091	710	1	1.0	1.6
20141106	6200092	129	0	0.8	3.7
20141130	6200093	709	0	1.0	1.4
20141130	6200094	151	0	1.0	1.3
20141130	6200105	720	0	1.0	1.4
20141130	6200163	719	0	1.0	1.4
20141130	6200191	223	19	0.0	0.0
20141130	6200192	225	0	1.0	1.9
20141130	6200442	720	2	1.0	1.6
20141130	6400045	720	1	1.0	1.5
20141130	6400046	714	0	1.0	1.4
20141130	6600021	710	1	1.2	0.9
20141130	6600022	651	1	1.2	1.0
20141130	6600024	696	0	1.1	1.1

Comments on QC statistics :

Air pressure

1. Metocean buoy WMO **2500652** stopped transmitting in October but started again in November. However, pressure measurements came wrong and the GTS transmission was stopped for this parameter on the 19th.
2. Metocean buoys WMO **4400725**, **6300640**, **6300644** and **6400516** temporarily reported wrong pressure data in November for unknown reasons. Metocean buoy WMO **6500598** also reported wrong pressure data in November. The GTS data transmission was stopped on the 25th but re-instated on the 3rd of December.
3. Metocean buoy WMO **6300641** and **6400670** reported dubious pressure data in November. The GTS data transmission was stopped on the 25th and 27th for this parameter, respectively.
4. In November, Italian moored buoy WMO **6100213** reported a few pressure data which were strongly biased (~4.5 hPa).
5. Irish moored buoy M6 (WMO **6200095**) reported 26 gross errors during the month.

Air temperature

6. Air temperature measurements, carried out by Greek Poseidon buoy WMO **6101007**, continue to be systematically biased for about 1,6 °C.

Wind

7. Poseidon moored buoy WMO **6101003** presents a systematic bias of about -30° (comparisons with model analysis outputs when the wind is well established).
8. Greek moored buoy WMO **6101007** continued to report abnormal calm winds onto the GTS. In addition, wind directions came wrong after the 27th of November.
9. Portuguese moored buoy WMO **6200191** reported abnormal calm winds before the transmission was stopped onto the GTS after the buoy came adrift.

E-SURFMAR DB Monthly Report November 2014

Monthly QC statistics and other data quality control tools are available on line at :
<http://www.meteo.shom.fr/qctools/>

The working area of the E-SURFMAR website is open at <http://esurfmar.meteo.fr/wikisurf-wa/> . Ask the E-SURFMAR Programme Manager Pierre.Blouch@meteo.fr for the password in case you forgot it. Graphs of system performances may be displayed/downloaded at http://esurfmar.meteo.fr/doc/r/surfmar/others/e-surfmar_monitoring.pdf.