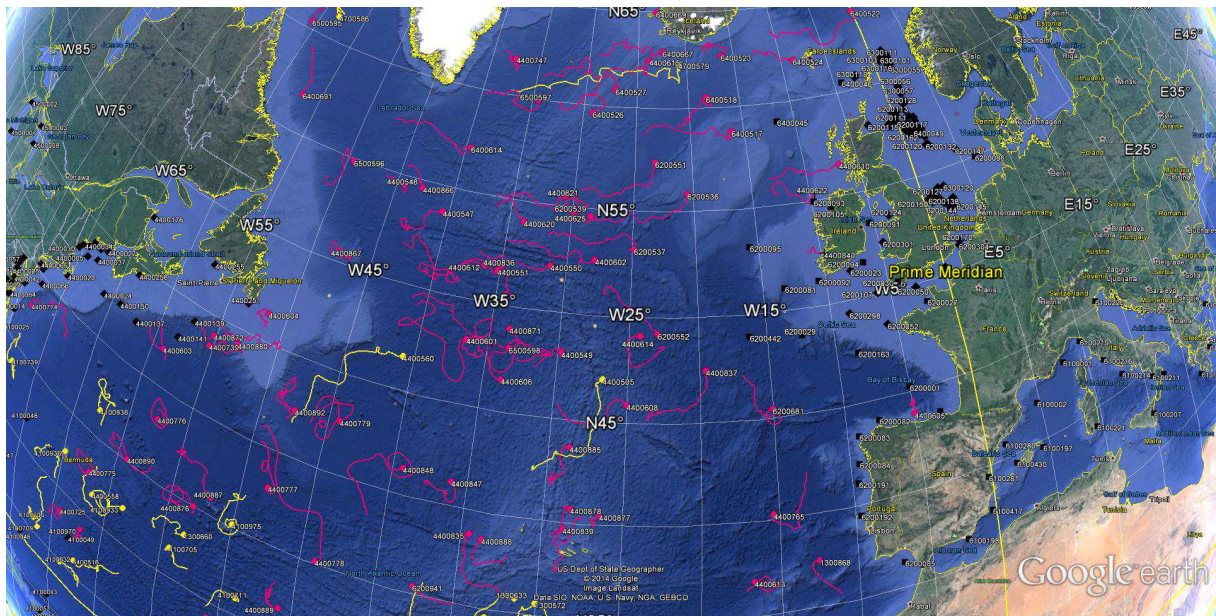


DATA BUOY MONTHLY REPORT

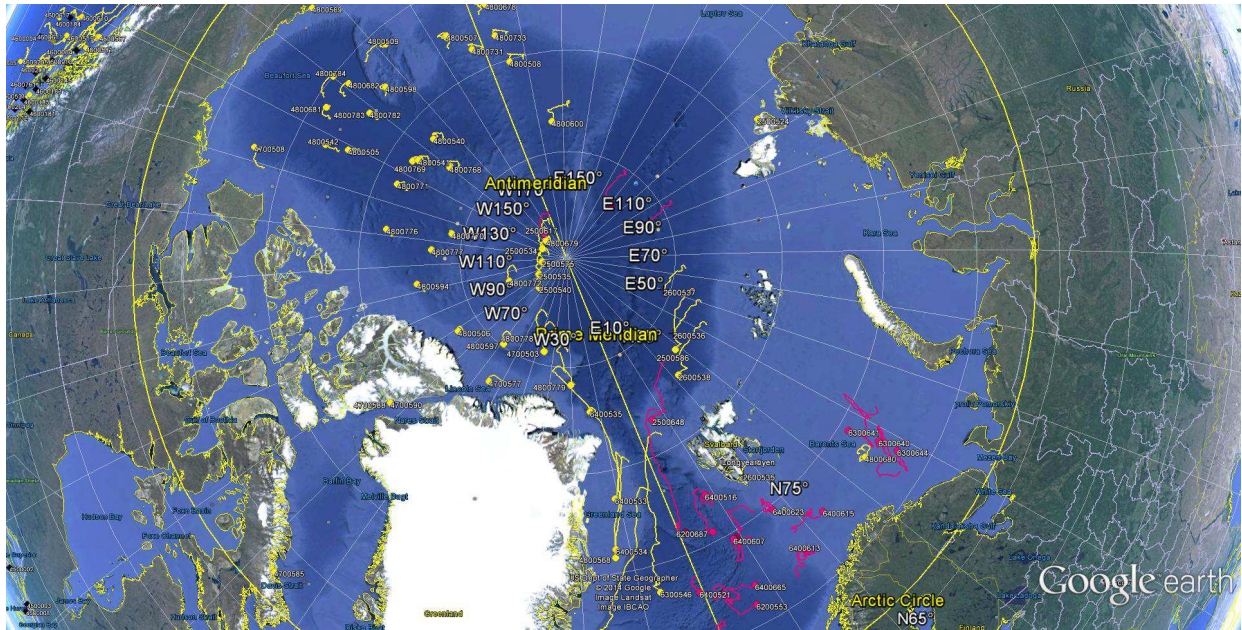
December 2014



*December 2014 : Operating data buoys in the North Atlantic
Drifting buoy trajectories : E-SURFMAR (red), others (yellow)
Moored buoy positions (black)*

*Most recent trajectories may be seen at:
http://www.meteo.shom.fr/cartographie/data/kml/MeteoFrance_buoys_map_15.kmz*

**E-SURFMAR DB Monthly Report
December 2014**



*December 2014
Drifting buoy trajectories in Arctic Ocean and adjacent seas : E-SURFMAR (red), others (yellow)*

DRIFTING BUOYS

Network status

By the end of December, **111 Drifting buoys**, reporting air pressure onto the GTS, were in operation in the frame of E-SURFMAR. Out of these, 77 were E-SURFMAR funded Iridium SVP-Bs, including 4 in the Arctic and 11 HRSST-2 buoys. The remaining buoys were: 34 Iridium drifters owned by NOAA and upgraded with barometers by E-SURFMAR.

Information about the availability of buoys for future deployments may be get from the E-SURFMAR wikisite (working area) at: http://esurfmar.meteo.fr/wikisurf-wa/index.php/Availability_of_drifting_buoys

Besides E-SURFMAR buoys, 63 drifting buoys were reporting at least air pressure observations from the EUMETNET area of interest. Out of these, only one was reporting Sea Surface Salinity. One German moored buoy is still reporting its data with a WMO number normally allocated to a drifting buoy (6202603).

Operating drifting buoys in North Atlantic by the end of the month

WMO	Telcom	Typ	Ow	nobs	Wi	AT	AP	dP	ST	Wa	Ws	Dr	Sb	U	SS	O	Start_end	Lat	Lon	Age
1300868	11686410	MSB	EU	744	-	-	X	X	X	-	-	X	-	-	-	T	0112-3112	37.58	-12.59	41
1300869	11688410	MSB	EU	744	-	-	X	X	X	-	-	X	-	-	-	T	0112-3112	25.40	-19.04	39
2500616	61762070	MSB	EU	744	-	-	X	X	-	-	-	X	-	-	-	T	0112-3112	74.12	157.47	148
2500617	61767070	MSB	EU	744	-	-	X	X	S	-	-	X	-	-	-	T	0112-3112	87.93	-179.54	102
2500620	61760090	MSB	EU	744	-	-	X	X	-	-	-	X	-	-	-	T	0112-3112	85.25	122.70	96
2500648	60370080	MSB	EU	744	-	-	X	X	X	-	-	X	-	-	-	T	0112-3112	81.60	6.01	483
4100969	60213780	PSB	UP	742	-	-	X	X	X	-	-	X	-	-	-	T	0112-3112	24.52	-30.03	511
4100970	60213790	PSB	UP	742	-	-	X	X	X	-	-	X	-	-	-	T	0112-3112	28.81	-61.88	510
4100971	60215900	PSB	UP	669	-	-	X	X	X	-	-	X	-	-	-	T	0112-3112	30.56	-35.82	510
4100972	60217780	PSB	UP	632	-	-	X	X	X	-	-	X	-	-	-	T	0112-3112	26.06	-40.85	510
4400546	11160640	MSB	EU	744	-	-	X	X	X	-	-	X	-	-	-	T	0112-3112	29.81	-21.34	652
4400547	60173710	MSB	EU	744	-	-	X	X	X	-	-	X	-	-	-	T	0112-3112	53.77	-40.45	143
4400548	11799230	MSB	E2	740	-	-	X	X	X	-	-	X	-	-	-	T	0112-3112	54.55	-44.25	143
4400549	60896130	MSB	EU	742	-	-	X	X	X	-	-	X	-	-	-	T	0112-3112	48.15	-29.74	116
4400550	60894140	MSB	EU	742	-	-	X	X	X	-	-	X	-	-	-	T	0112-3112	52.14	-31.22	116
4400551	60892140	MSB	EU	742	-	-	X	X	X	-	-	X	-	-	-	T	0112-3112	51.58	-35.18	116
4400601	60890150	MSB	EU	742	-	-	X	X	X	-	-	X	-	-	-	T	0112-3112	48.13	-36.56	115
4400602	11468700	MSB	UP	744	-	-	X	X	X	-	-	X	-	-	-	T	0112-3112	52.61	-27.84	650
4400603	11793230	MSB	E2	739	-	-	X	X	X	-	-	X	-	-	-	T	0112-3112	41.99	-58.86	86
4400605	11473110	MSB	EU	744	-	-	X	X	X	-	-	X	-	-	-	T	0112-3112	43.90	-5.00	600
4400606	11162640	MSB	EU	744	-	-	X	X	X	-	-	X	-	-	-	T	0112-3112	46.54	-33.70	84
4400608	11093800	MSB	E2	744	-	-	X	X	X	-	-	X	-	-	-	T	0112-3112	45.89	-25.02	83
4400610	61517860	MSB	EU	742	-	-	X	X	X	-	-	X	-	-	-	T	0112-3112	56.54	-6.83	387
4400612	61511880	MSB	EU	703	-	-	X	X	X	-	-	X	-	-	-	T	0112-3112	51.70	-36.23	375
4400613	11475040	MSB	EU	744	-	-	X	X	X	-	-	X	-	-	-	T	0112-3112	36.92	-16.75	666
4400614	61661340	MSB	EU	742	-	-	X	X	X	-	-	X	-	-	-	T	0112-3112	49.16	-24.23	246
4400615	61666340	MSB	EU	742	-	-	X	X	X	-	-	X	-	-	-	T	0112-3112	62.42	-23.85	245
4400620	61667370	MSB	EU	742	-	-	X	X	X	-	-	X	-	-	-	T	0112-3112	54.02	-33.78	245
4400621	61519840	MSB	EU	741	-	-	X	X	X	-	-	X	-	-	-	T	0112-3112	55.50	-30.69	326
4400622	61668320	MSB	EU	688	-	-	X	X	X	-	-	X	-	-	-	T	0112-3012	55.35	-9.62	243
4400624	11341110	YSB	EU	732	-	-	X	X	X	-	-	X	-	-	-	T	0112-3112	25.96	-18.19	751
4400625	61668340	MSB	EU	653	-	-	X	X	X	-	-	X	-	-	-	T	0112-3112	54.64	-28.46	244
4400725	11027170	MSB	EU	744	-	-	X	X	X	-	-	X	-	-	-	T	0112-3112	28.77	-64.11	922
4400739	61516840	MSB	EU	742	-	-	X	X	X	-	-	X	-	-	-	T	0112-3112	43.49	-55.27	212
4400740	11883820	PSB	UP	562	-	-	X	X	X	-	-	X	-	-	-	T	0112-3012	25.35	-45.57	906
4400747	61610060	MSB	EU	641	-	-	X	X	X	-	-	X	-	-	-	T	0112-3112	61.87	-37.49	372
4400765	11685410	MSB	EU	744	-	-	X	X	X	-	-	X	-	-	-	T	0112-3112	40.30	-15.41	643
4400773	60211790	PSB	UP	634	-	-	X	X	X	-	-	X	-	-	-	T	0112-3112	21.37	-39.10	536
4400774	61477400	DSB	UP	744	-	-	X	X	X	-	-	X	-	-	-	T	0112-3112	38.59	-68.19	46
4400775	61476400	DSB	UP	743	-	-	X	X	X	-	-	X	-	-	-	T	0112-3112	32.80	-62.07	46

E-SURFMAR DB Monthly Report December 2014

4400776	61474410	DSB	UP	744	-	-	X	X	X	-	-	X	-	-	-	T	0112-3112	38.43	-57.47	45
4400777	61475420	DSB	UP	743	-	-	X	X	X	-	-	X	-	-	-	T	0112-3112	38.07	-48.02	45
4400778	61475430	DSB	UP	744	-	-	X	X	X	-	-	X	-	-	-	T	0112-3112	35.20	-43.93	44
4400779	61473400	DSB	UP	744	-	-	X	X	X	-	-	X	-	-	-	T	0112-3112	42.70	-44.12	44
4400835	60218770	PSB	UP	743	-	-	X	X	X	-	-	X	-	-	-	T	0112-3112	38.83	-34.45	303
4400836	60218680	PSB	UP	743	-	-	X	X	X	-	-	X	-	-	-	T	0112-3112	51.82	-34.94	303
4400837	60209490	PSB	UP	743	-	-	X	X	X	-	-	X	-	-	-	T	0112-3112	47.51	-19.58	303
4400839	60205090	PSB	UP	743	-	-	X	X	X	-	-	X	-	-	-	T	0112-3112	39.71	-28.69	303
4400846	60441290	DSB	UP	743	-	-	X	X	X	-	-	X	-	-	-	T	0112-3112	30.99	-30.30	340
4400847	60442280	DSB	UP	744	-	-	X	X	X	-	-	X	-	-	-	T	0112-3112	41.25	-36.00	340
4400848	60448280	DSB	UP	743	-	-	X	X	X	-	-	X	-	-	-	T	0112-3112	41.36	-39.26	339
4400863	60211690	PSB	UP	692	-	-	X	X	X	-	-	X	-	-	-	T	0112-3112	30.08	-32.70	534
4400866	11793240	MSB	E2	738	-	-	X	X	X	-	-	X	-	-	-	T	0112-3112	54.64	-42.63	194
4400867	11593590	MSB	EU	744	-	-	X	X	X	-	-	X	-	-	-	T	0112-3112	50.46	-46.87	192
4400868	11794230	MSB	E2	744	-	-	X	X	X	-	-	X	-	-	-	T	0112-3112	27.32	-50.90	603
4400871	11790240	MSB	E2	744	-	-	X	X	X	-	-	X	-	-	-	T	0112-3112	48.97	-33.61	188
4400872	60202920	MSB	EU	744	-	-	X	X	X	-	-	X	-	-	-	T	0112-3112	44.07	-55.17	188
4400876	60648350	DSB	UP	742	-	-	X	X	X	-	-	X	-	-	-	T	0112-3112	35.09	-53.00	340
4400877	60526170	PSB	UP	743	-	-	X	X	X	-	-	X	-	-	-	T	0112-3112	40.51	-26.46	331
4400878	60528170	PSB	UP	743	-	-	X	X	X	-	-	X	-	-	-	T	0112-3112	40.74	-28.30	331
4400880	60656880	PSB	UP	743	-	-	X	X	X	-	-	X	-	-	-	T	0112-3112	44.26	-53.09	332
4400885	60218780	PSB	UP	742	-	-	X	X	X	-	-	X	-	-	-	T	0112-3112	43.73	-28.62	216
4400887	60251440	PSB	UP	743	-	-	X	X	X	-	-	X	-	-	-	T	0112-3112	36.07	-51.90	218
4400888	60359010	PSB	UP	743	-	-	X	X	X	-	-	X	-	-	-	T	0112-3112	38.65	-33.65	216
4400889	60202320	PSB	UP	743	-	-	X	X	X	-	-	X	-	-	-	T	0112-3112	31.75	-45.85	217
4400890	12000230	PSB	UP	694	-	-	X	X	X	-	-	X	-	-	-	T	0112-3112	35.23	-59.03	216
4400891	12007220	PSB	UP	737	-	-	X	X	X	-	-	X	-	-	-	T	0112-3112	31.25	-30.99	214
4400892	60018400	PSB	UP	743	-	-	X	X	X	-	-	X	-	-	-	T	0112-3112	42.40	-47.44	215
6200514	60203700	MSB	E2	744	-	-	X	X	X	-	-	X	-	-	-	T	0112-3112	66.22	-9.80	678
6200516	11475100	MSB	EU	744	-	-	X	X	X	-	-	X	-	-	-	T	0112-3112	36.83	-16.20	604
6200536	11599570	MSB	EU	744	-	-	X	X	X	-	-	X	-	-	-	T	0112-3112	55.83	-20.53	206
6200537	11791240	MSB	E2	742	-	-	X	X	X	-	-	X	-	-	-	T	0112-3112	53.19	-24.87	206
6200539	60891140	MSB	EU	742	-	-	X	X	X	-	-	X	-	-	-	T	0112-3112	54.79	-29.94	118
6200551	60897120	MSB	EU	742	-	-	X	X	X	-	-	X	-	-	-	T	0112-3112	57.35	-23.25	118
6200552	11797240	MSB	E2	744	-	-	X	X	X	-	-	X	-	-	-	T	0112-3112	49.26	-22.97	83
6200553	11165650	MSB	EU	744	-	-	X	X	X	-	-	X	-	-	-	T	0112-3112	71.15	6.54	648
6200681	11168640	MSB	EU	744	-	-	X	X	X	-	-	X	-	-	-	T	0112-3112	45.46	-15.05	776
6200687	11349100	YSB	EU	739	-	-	X	X	X	-	-	X	-	-	-	T	0112-3112	75.51	5.99	755
6200695	60408990	MSB	E2	732	-	-	X	X	X	-	-	X	-	-	-	T	0112-3112	26.09	-27.05	604
6200713	11246980	YSB	EU	731	-	-	X	X	X	-	-	X	-	-	-	T	0112-3112	25.36	-51.95	750
6200714	11240980	YSB	EU	703	-	-	X	X	X	-	-	X	-	-	-	T	0112-3112	21.66	-48.25	747
6200940	60203850	PSB	UP	743	-	-	X	X	X	-	-	X	-	-	-	T	0112-3112	34.87	-27.77	213
6200941	61516840	PSB	UP	743	-	-	X	X	X	-	-	X	-	-	-	T	0112-3112	35.47	-37.54	213
6300644	61766070	MSB	EU	744	-	-	X	X	X	-	-	X	-	-	-	T	0112-3112	71.77	38.10	91
6400517	61619060	MSB	EU	712	-	-	X	X	X	-	-	X	-	-	-	T	0112-3112	58.77	-16.19	50
6400518	60892150	MSB	EU	696	-	-	X	X	X	-	-	X	-	-	-	T	0112-3112	60.53	-18.29	49
6400520	11479040	MSB	EU	744	-	-	X	X	X	-	-	X	-	-	-	T	0112-3112	69.69	-10.04	600
6400521	11470030	MSB	EU	744	-	-	X	X	X	-	-	X	-	-	-	T	0112-3112	72.98	-0.57	598
6400522	61511870	MSB	EU	713	-	-	X	X	X	-	-	X	-	-	-	T	0112-3112	63.97	-0.17	131
6400523	61510870	MSB	EU	742	-	-	X	X	X	-	-	X	-	-	-	T	0112-3112	62.62	-16.31	53
6400524	61619040	MSB	EU	742	-	-	X	X	X	-	-	X	-	-	-	T	0112-3112	62.05	-8.68	53
6400525	60175710	MSB	EU	744	-	-	X	X	X	-	-	X	-	-	-	T	0112-3112	68.87	-9.73	502
6400526	61611070	MSB	EU	691	-	-	X	X	X	-	-	X	-	-	-	T	0112-3112	59.63	-29.13	51
6400527	61514840	MSB	EU	655	-	-	X	X	X	-	-	X	-	-	-	T	0112-3112	60.85	-27.13	50
6400607	11479100	MSB	EU	744	-	-	X	X	X	-	-	X	-	-	-	T	0112-3112	74.69	8.62	784
6400613	60174710	MSB	EU	744	-	-	X	X	X	-	-	X	-	-	-	T	0112-3112	72.02	17.39	487
6400614	60178700	MSB	EU	744	-	-	X	X	X	-	-	X	-	-	-	T	0112-3112	57.06	-39.53	483
6400615	60173700	MSB	EU	745	-	-	X	X	X	-	-	X	-	-	-	T	0112-3112	72.99	23.44	418
6400622	60172810	MSB	EU	744	-	-	X	X	X	-	-	X	-	-	-	T	0112-3112	67.95	1.30	503
6400623	11470040	MSB	EU	744	-	-	X	X	X	-	-	X	-	-	-	T	0112-3112	74.76	17.36	599
6400665	60171710	MSB	EU	744	-	-	X	X	X	-	-	X	-	-	-	T	0112-3112	72.09	7.83	399
6400666	60179710	MSB	EU	744	-	-	X	X	X	-	-	X	-	-	-	T	0112-3112	70.81	-5.79	399
6400667	61615060	MSB	EU	595	-	-	X	X	X	-	-	X	-	-	-	T	0112-3112	62.88	-22.43	371
6400668	60177860	MSB	EU	744	-	-	X	X	X	-	-	X	-	-	-	T	0112-3112	74.70	9.27	375
6400669	60177710	MSB	EU	744	-	-	X	X	X	-	-	X	-	-	-	T	0112-3112	64.97	-23.07	371
6400691	61514870	MSB	EU	742	-	-	X	X	X	-	-	X	-	-	-	T	0112-3112	56.89	-56.92	327
6400692	60172720	MSB	EU	744	-	-	X	X	X	-	-	X	-	-	-	T	0112-3112	68.14	-0.98	314
6500595	11595570	MSB	EU	744	-	-	X	X	X	-	-	X	-	-	-	T	0112-3112	60.41	-60.52	198
6500596	61511850	MSB	EU	742	-	-	X	X	X	-	-	X	-	-	-	T	0112-3112	54.85	-49.31	196
6500597	11595650	MSB	EU	744	-	-	X	X	X	-	-	X	-	-	-	T	0112-3112	59.95	-34.43	202
6500598	11792240	MSB	E2	744	-	-	X	X	X	-	-	X	-	-	-	T	0112-3112	48.05	-33.46	190

Drifting buoys which ceased to be operational

E-SURFMAR DB Monthly Report December 2014

WMO	Telcom	Typ	Ow	End_Date	Lat	Lon	Age	Cause
2500615	61660360	MSB	EU	20141219	85.9	91.8	157	Unknown
2500624	60247420	MSB	EU	20141222	76.1	1.3	488	AP measurements failed
4400604	11794240	MSB	E2	20141218	46.4	-51.5	85	AP measurements failed
4400840	60208710	PSB	UP	20141207	52.5	-9.8	278	Ashore in Ireland
6300640	60172710	MSB	EU	20141229	72.9	37.9	505	AP measurements failed
6400516	11473100	MSB	EU	20141215	77.3	8.2	813	AP measurements failed
6400670	61513850	MSB	EU	20141219	62.9	-71.3	302	Unknown

Non-operating drifting buoys reporting GTS data

WMO	Telcom	Typ	Ow	nobs	Wi	AT	AP	dP	ST	Wa	Ws	Dr	Sb	U	SS	O	Start_end	Lat	Lon	Age
2500624	60247420	MSB	EU	744	-	-	S	S	X	-	-	X	-	-	-	T	0112-3112	76.07	1.32	488
4400604	11794240	MSB	E2	744	-	-	S	S	X	-	-	X	-	-	-	T	0112-3112	46.37	-51.53	85
6200538	11460700	MSB	UP	744	-	-	-	-	X	-	-	X	-	-	-	T	0112-3112	60.03	-31.90	205
6300640	60172710	MSB	EU	732	-	-	X	X	X	-	-	X	-	-	-	T	0112-3112	72.87	37.89	505
6300641	61665210	MSB	EU	195	-	-	-	-	X	-	-	X	-	-	-	T	2312-3112	74.48	36.78	92
6400516	11473100	MSB	EU	745	-	-	S	S	X	-	-	X	-	-	-	T	0112-3112	77.28	8.24	813

Other operating drifting buoys inside the EUMETNET area by the end of the month

WMO	Telcom	Typ	Ow	nobs	Wi	AT	AP	dP	ST	Wa	Ws	Dr	Sb	U	SS	O	Start_end	Lat	Lon
1300569	114880	AOML		701	-	-	X	-	X	-	-	X	-	-	-	L	0112-3112	31.46	-28.98
1300570	116474	AOML		739	-	-	X	-	X	-	-	X	-	-	-	L	0112-3112	33.22	-30.77
1300572	127002	AOML		734	-	-	X	X	X	-	-	X	-	-	-	L	0112-3112	35.73	-30.03
1300590	139825	AOML		731	-	-	X	X	X	-	-	X	-	-	-	L	0112-3112	34.11	-30.43
1300633	109491	AOML		735	-	-	X	X	X	-	-	X	-	-	-	L	0112-3112	35.86	-31.29
1300659	11910180	UKMO		744	-	-	X	X	X	-	-	X	-	-	-	T	0112-3112	23.64	-48.78
1300660	11022040	UKMO		744	-	-	X	X	X	-	-	X	-	-	-	T	0112-3112	33.22	-53.28
1300662	11098800	UKMO		743	-	-	X	X	X	-	-	X	-	-	-	T	0112-3112	26.19	-37.40
1300664	11090810	UKMO		725	-	-	X	X	X	-	-	X	-	-	-	T	0112-3112	23.34	-47.19
1300668	60897010	UKMO		743	-	-	X	X	-	-	-	X	-	-	-	T	0112-3112	1.98	5.88
1500549	60794980	UKMO		744	-	-	X	X	X	-	-	X	-	-	-	T	0112-3112	3.39	-35.91
2100942	119223	AOML		737	-	-	X	X	X	-	-	X	-	-	-	L	0112-3112	34.42	-26.34
2500540				153	-	-	X	X	X	-	-	-	-	-	-	L	2512-3112	88.17	-65.29
2500586	2500586	PSC		446	-	-	X	X	X	-	-	X	-	-	-	T	1312-3112	83.48	28.09
2600536	61361220	PSC		9	-	-	X	X	X	-	-	-	-	-	-	O	3012-3012	84.01	32.97
2600538	61369400	PSC		594	-	-	X	X	X	-	-	-	-	-	-	O	0712-3112	82.58	21.90
3100717	61614160	CMM		742	-	-	X	X	X	-	-	X	-	-	-	T	0112-3112	16.47	-51.20
3100862	61213570	LOCE		1485	-	-	X	X	X	-	-	X	-	-	X	T	0112-3112	1.30	-6.45
3100863	61611040	CMM		742	-	-	X	X	X	-	-	X	-	-	-	T	0112-3112	20.77	-48.51
4100560	114550	AOML		737	-	-	X	-	-	-	-	X	-	-	-	L	0112-3112	33.92	-19.92
4100564	109221	AOML		734	-	-	X	-	X	-	-	X	-	-	-	L	0112-3112	29.67	-39.85
4100580	132677	AOML		674	-	-	X	X	X	-	-	X	-	-	-	L	0212-3112	16.80	-42.39
4100590	132676	AOML		600	-	-	X	X	X	-	-	X	-	-	-	L	0512-3112	16.23	-49.93
4100591	132678	AOML		508	-	-	X	X	X	-	-	X	-	-	-	L	0912-3112	17.02	-47.14
4100596	11473050	EUME		744	-	-	X	X	X	-	-	X	-	-	-	T	0112-3112	19.64	-58.06
4100597	61512840	AOML		742	-	-	X	X	X	-	-	X	-	-	-	T	0112-3112	21.95	-50.55
4100598	61610040	AOML		742	-	-	X	X	X	-	-	X	-	-	-	T	0112-3112	23.22	-48.59
4100599	61615070	AOML		742	-	-	X	X	X	-	-	X	-	-	-	T	0112-3112	17.26	-63.08
4100600	61618040	AOML		742	-	-	X	X	X	-	-	X	-	-	-	T	0112-3112	15.90	-55.62
4100612	123247	AOML		674	-	-	X	X	X	-	-	X	-	-	-	L	0112-2912	31.93	-66.15
4100632	11474050	EUME		724	-	-	X	X	X	-	-	X	-	-	-	T	0112-3112	25.05	-63.63
4100705	11596570	AOML		744	-	-	X	X	X	-	-	X	-	-	-	T	0112-3112	31.94	-54.22
4100706	11595580	AOML		744	-	-	X	X	X	-	-	X	-	-	-	T	0112-3112	26.16	-66.94
4100709	11598570	AOML		744	-	-	X	X	X	-	-	X	-	-	-	T	0112-3112	25.80	-66.42
4100711	11477030	EUME		739	-	-	X	X	X	-	-	X	-	-	-	T	0112-3112	31.18	-48.87
4100737	60342390	CMM		727	-	-	X	X	S	-	-	X	-	-	S	T	0112-3112	25.12	-56.92
4100800	60547830	CMM		744	-	-	X	X	X	-	-	X	-	-	S	T	0112-3112	23.21	-49.07
4100933	101721	AOML		742	-	-	X	X	X	-	-	X	-	-	-	L	0112-3112	32.34	-58.48
4100936	109488	AOML		660	-	-	X	X	X	-	-	X	-	-	-	L	0112-3112	32.67	-64.69
4100938	109437	AOML		737	-	-	X	X	X	-	-	X	-	-	-	L	0112-3112	36.62	-62.47
4100975	109439	AOML		708	-	-	X	X	X	-	-	X	-	-	-	L	0112-3112	35.24	-49.98
4400505	98087	ICEP		1562	-	-	X	X	X	-	-	-	-	-	-	L	0112-3112	47.05	-26.73
4400516	114599	AOML		695	-	-	X	X	X	-	-	X	-	-	-	L	0112-3112	26.17	-62.27
4400554	126479	AOML		721	-	-	X	X	X	-	-	X	-	-	-	L	0112-3112	32.04	-38.99
4400558	123286	AOML		743	-	-	X	X	X	-	-	X	-	-	-	L	0112-3112	31.65	-61.34

E-SURFMAR DB Monthly Report December 2014

4400560	126480	AOML	738	-	-	X	X	X	-	-	X	-	-	-	L	0112-3112	46.65	-40.78
4400896	109438	AOML	692	-	-	X	X	X	-	-	X	-	-	-	L	0112-3112	34.58	-32.99
4700503			743	-	-	X	X	S	-	-	-	-	-	-	L	0112-3112	85.61	-35.67
4700577	11096790	AWI	743	-	X	X	-	-	-	-	-	-	-	-	O	0112-3112	83.29	-54.66
4700579	11097780	AWI	744	-	-	X	X	X	-	-	-	-	-	-	O	0112-3112	62.27	-20.86
4700585	11541430	EC	743	-	-	X	X	X	-	-	X	-	-	-	O	0112-3112	68.22	-66.65
4700586	11541440	EC	744	-	-	X	X	X	-	-	X	-	-	-	O	0112-3112	61.23	-57.92
4800568	61363210	PSC	744	-	-	X	X	S	-	-	-	-	-	-	O	0112-3112	75.80	-13.09
4800597	100009	PSC	587	X	X	X	-	-	-	-	X	-	-	-	O	0112-3112	85.11	-58.76
4800680	60233160	APL	740	-	-	X	X	X	-	-	X	-	-	-	T	0112-3112	73.05	34.56
4800778	60894080	EC	743	-	-	X	X	-	-	-	-	-	-	-	O	0112-3112	86.20	-41.97
4800779	60890090	EC	743	-	-	X	X	-	-	-	-	-	-	-	O	0112-3112	84.18	-20.25
6202603		BSH	664	X	X	X	X	-	-	-	-	-	X	-	O	0112-3112	55.20	7.20
6300546	61361200	PSC	744	-	-	X	X	X	-	-	X	-	-	-	O	0112-3112	73.62	-6.66
6400532			745	-	-	X	X	X	-	-	-	-	-	-	L	0112-3112	72.07	-17.27
6400533			744	-	-	X	X	S	-	-	-	-	-	-	L	0112-3112	78.64	-10.84
6400534			744	-	-	X	X	S	-	-	-	-	-	-	L	0112-3112	76.21	-12.75
6400535			744	-	-	X	X	X	-	-	-	-	-	-	L	0112-3112	82.88	-13.39

----- Abbreviations -----

WMO : WMO id.
 Argos : Argos id.
 Typ : Buoy type
 - first character : Manufacturer (C = ConMar , M = Metocean, P = Pacific Gyre
 T = Technocean, Y = Marlin-Yug...)
 - second character : Main type (F = FGGE, I = ICEB, S = SVP)
 - third character : Sub type (B = barometer buoy, W = Wind buoy,
 S = Salinity buoy)

Ow : Buoy owner (country code or EU for EUCOS, E2 for HRSST-2 buoys, UP for upgraded
 buoys)
 Owner : Buoy owner for non EUCOS buoys
 Nobs : number of GTS reports received at Meteo-France
 Parameters (X = OK, S = stopped, - = not measured) :
 Wi : Wind
 AT : Air Temperature
 AP : Air Pressure
 dP : Air pressure tendency
 ST : Sea surface Temperature
 Wa : Wave period and height
 Ws : Wave spectra
 Dr : Drogue presence
 Sb : Subsurface temperature
 U : Relative humidity
 SS : Sea surface Salinity

O : Origin of the reports (T = Argos Toulouse, L = Argos Largo, O = Other)
 Start_end : first and last dates of the month for which GTS data were received at Meteo-France
 Lat : Latitude of the latest position
 Lon : Longitude of the latest position
 Age : Age of the buoy (days)

DepDate : Date of deployment
 DepLat : Latitude of deployment
 Dep Lon : Longitude of Deployment
 From : Harbour of departure

Definition : An operating drifting buoy is a buoy providing at least air pressure or wind
 (direction and velocity) data.

MOORED BUOYS

Former EGOS stations (K-pattern and Hydrosphere)

WMO	Name	nobs	Wi	AT	AP	dP	ST	Wa	Ws	Dr	Sb	U	SS	O	Start_end	Lat	Lon
6100001	Cote d'Azur	739	X	X	X	X	X	X	X	-	-	X	-	T	0112-3112	43.40	7.80
6100002	Lion	741	X	X	X	X	X	X	X	-	-	X	-	O	0112-3112	42.10	4.70
6200001	Gascogne	744	X	X	X	X	X	X	-	-	-	X	-	O	0112-3112	45.30	-5.00
6200029	K1	728	X	X	X	-	X	X	-	-	-	X	-	O	0112-3112	48.70	-12.50
6200081	K2	744	X	X	X	X	X	X	-	-	-	X	-	O	0112-3112	51.00	-13.20
6200090	M1	-	-	-	-	-	-	-	-	-	-	-	-	-	-	-	-
6200091	M2	742	X	X	X	-	X	X	-	-	-	X	-	O	0112-3112	53.50	-5.40
6200092	M3	730	X	X	X	-	X	X	-	-	-	X	-	O	0112-3112	51.20	-10.50
6200093	M4	741	X	X	X	-	X	X	-	-	-	-	-	O	0112-3112	54.70	-9.10
6200094	M5	740	X	X	X	-	X	X	-	-	-	X	-	O	0112-3112	51.70	-6.70
6200095	M6	395	-	S	S	S	-	S	-	-	-	S	-		0112-1812	53.10	-15.90
6200105	K4	742	X	X	X	X	X	X	-	-	-	X	-	O	0112-3112	55.80	-11.40
6200108	K3	-	-	-	-	-	-	-	-	-	-	-	-	-	-	-	-
6200163	Brittany	744	X	X	X	X	X	X	X	-	-	X	-	O	0112-3112	47.50	-8.40
6400045	K5	744	S	X	X	X	X	X	-	-	-	X	-	O	0112-3112	59.10	-11.70
6400046	K7	743	X	X	X	-	X	X	-	-	-	X	-	O	0112-3112	60.70	-5.20

Comments:

- EUMETNET moored buoys are presented in bold characters.

Former EGOS moored buoys (Spanish SeaWatch and WaveScan)

WMO	Name	nobs	Wi	AT	AP	dP	ST	Wa	Ws	Dr	Sb	U	SS	O	Start_end	Lat	Lon
1300130	Gran Canaria	-	-	-	-	-	-	-	-	-	-	-	-	-	-	28.18	-15.82
1300131	Tenerife Sur	258	X	X	X	-	-	X	X	-	-	-	-	O	0112-3012	28.00	-16.58
6100196	C. Begur	-	-	-	-	-	-	-	-	-	-	-	-	-	-	41.92	3.65
6100197	Mahon	741	X	X	X	-	-	X	X	-	-	-	-	O	0112-3112	39.72	4.42
6100198	C. de Gata	462	X	X	X	-	S	X	X	-	-	-	X	O	0312-3112	36.57	-2.33
6100280	Tarragona	367	X	X	X	-	-	X	X	-	-	-	X	O	1512-3112	40.77	1.47
6100281	Valencia	739	X	X	X	-	S	X	X	-	-	-	X	O	0112-3112	39.47	-0.27
6100417	C. de Palos	246	S	S	S	-	S	S	-	-	-	-	S	O	0112-1112	37.65	-0.32
6100430	Dragonera	679	X	X	X	-	S	X	X	-	-	-	-	O	0112-3112	39.56	2.11
6200024	Bilbao-Visc.	739	X	X	X	-	S	X	X	-	-	-	X	O	0112-3112	43.63	-3.03
6200025	C. de Penas	565	X	X	X	-	S	X	X	-	-	-	X	O	0112-3112	43.73	-6.17
6200082	E. de Bares	741	X	X	X	-	S	X	X	-	-	-	X	O	0112-3112	44.13	-7.69
6200083	Villano-Sis.	742	X	X	X	-	S	X	X	-	-	-	X	O	0112-3112	43.48	-9.22
6200084	C. Silleiro	740	X	X	X	-	S	X	X	-	-	-	X	O	0112-3112	42.12	-9.43
6200085	G. de Cadiz	57	S	S	S	-	S	S	-	-	-	-	S	O	0112-0612	36.48	-6.97
6201030	Santander	-	-	-	-	-	-	-	-	-	-	-	-	-	-	43.84	-3.77

Comments:

- The EUMETNET buoy is presented in bold characters.

Operating ISPRA moored buoys (Italy)

WMO	Name	nobs	Wi	AT	AP	dP	ST	Wa	Ws	Dr	Sb	U	SS	O	Start_end	Lat	Lon
6100207		1331	-	-	X	-	S	X	-	-	-	-	-	O	0112-3112	37.44	15.15
6100208		-	-	-	-	-	-	-	-	-	-	-	-	-	-	37.52	12.53
6100209		-	-	-	-	-	-	-	-	-	-	-	-	-	-	38.26	13.33
6100210		444	-	-	S	-	S	S	-	-	-	-	-	-	0112-1012	39.02	17.22
6100211		1419	-	-	X	-	S	X	-	-	-	-	-	O	0112-3112	39.45	15.92
6100212		-	-	-	-	-	-	-	-	-	-	-	-	-	-	40.62	9.89
6100213		-	-	-	-	-	-	-	-	-	-	-	-	-	-	40.55	8.11
6100214		876	-	-	X	-	S	X	-	-	-	-	-	O	0112-3112	40.87	12.95
6100215		1429	-	-	-	-	S	X	-	-	-	-	-	O	0112-3112	40.98	17.38
6100216		995	-	-	S	-	S	S	-	-	-	-	-	-	0112-2312	42.24	11.55
6100218		-	-	-	-	-	-	-	-	-	-	-	-	-	-	43.83	13.72
6100219		1126	-	-	X	-	S	X	-	-	-	-	-	O	0212-2912	43.93	9.83

E-SURFMAR DB Monthly Report December 2014

6100220	601	-	-	X	-	S	X	-	-	-	-	-	O	0112-3112	45.33	12.52
6100221	1432	-	-	X	-	S	X	-	-	-	-	-	O	0112-3112	39.12	9.40

Operating POSEIDON moored buoys (Greece)

WMO	Name	nobs	Wi	AT	AP	dP	ST	Wa	Ws	Dr	Sb	U	SS	O	Start_end	Lat	Lon
6101000			-	-	-	-	-	-	-	-	-	-	-			39.10	24.50
6101001		204	X	X	X	-	S	X	-	-	-	-	-	O	0112-3112	37.60	23.60
6101002			-	-	-	-	-	-	-	-	-	-	-			37.00	22.10
6101003		242	X	-	X	-	S	X	-	-	-	-	-	O	0112-3112	40.00	24.70
6101004			-	-	-	-	-	-	-	-	-	-	-			39.10	25.80
6101005			-	-	-	-	-	-	-	-	-	-	-			37.50	25.50
6101006			-	-	-	-	-	-	-	-	-	-	-			36.30	25.50
6101007		248	X	X	X	-	S	X	-	-	-	-	-	O	0112-3112	35.80	24.90
6101008		188	X	X	X	-	S	X	-	-	-	-	-	O	0112-3112	36.80	21.60
6101009			-	-	-	-	-	-	-	-	-	-	-			38.00	20.60

Other European moored buoys (operated by 3rd parties)

WMO	Name	nobs	Wi	AT	AP	dP	ST	Wa	Ws	Dr	Sb	U	SS	O	Start_end	Lat	Lon
1200050	Cycofos		-	-	-	-	-	-	-	-	-	-	-			33.60	31.90
6100010	Italia-1		-	-	-	-	-	-	-	-	-	-	-			43.80	9.10
6200027	Jersey	262	X	-	X	X	-	X	-	-	-	-	-	O	0112-3112	49.08	-22.20
6200030	L4	552	X	X	X	-	-	-	-	-	-	X	-	O	0112-3112	50.25	-4.22
6200050	E1	413	X	X	X	-	-	X	-	-	-	X	-	O	0112-3112	50.04	-4.37
6200086	NSB II	35	S	S	S	S	S	-	-	-	-	S	-		0612-2212	55.00	6.40
6200087	NSB III		-	-	-	-	-	-	-	-	-	-	-			54.70	6.80
6200191	Porto	105	S	S	S	-	-	S	-	-	-	-	-		0112-0512	41.15	-9.57
6200192	Peniche	725	X	X	X	-	-	X	-	-	-	-	-	O	0112-3112	39.50	-9.65
6200303	Turbo Bank	713	-	-	-	-	-	X	-	-	-	-	-	O	0112-3112	51.60	-5.10
6200442	PAP	744	X	-	X	-	-	-	-	-	-	-	-	O	0112-3112	49.00	-16.40
6600021	Arkona Becken	733	X	X	-	-	X	X	-	-	-	-	-	O	0112-3112	54.90	13.90
6600022	Oder Bank	339	S	S	-	-	S	-	-	-	-	-	-		0112-1612	54.10	14.20
6600024	Darsser Schwelle	729	X	X	-	-	X	X	-	-	-	-	-	O	0112-3112	54.70	12.70

Other offshore moored buoys inside the EUMETNET area

WMO	Name	nobs	Wi	AT	AP	dP	ST	Wa	Ws	Dr	Sb	U	SS	O	Start_end	Lat	Lon
1300001		503	X	X	X	-	X	-	-	-	-	X	-	L	0112-3112	11.47	-23.00
1300008		453	X	X	X	-	X	-	-	-	-	X	X	L	0112-3112	14.98	-38.02
1300308	East Atlantic		-	-	-	-	-	-	-	-	-	-	-			15.00	-38.00
4100026		387	X	X	-	-	-	-	-	-	-	X	-	L	0112-3112	11.49	-38.40
4100040	West Atlantic	736	X	X	X	X	X	X	-	-	-	X	-	O	0112-3112	14.50	-53.00
4100041	Mid. Atlantic	725	X	X	X	X	X	X	-	-	-	-	-	O	0112-3112	14.50	-46.00
4100043	Porto Rico	731	X	X	X	X	X	X	-	-	-	X	-	O	0112-3112	21.00	-65.00
4100044		742	X	X	X	X	X	X	-	-	-	X	-	O	0112-3112	21.70	-58.70
4100046		740	X	X	X	X	X	X	-	-	-	X	-	O	0112-3112	23.90	-70.90
4100047			-	-	-	-	-	-	-	-	-	-	-			27.50	-71.50
4100048		741	X	X	X	X	X	X	-	-	-	X	-	O	0112-3112	32.00	-69.60
4100049		744	X	X	X	X	X	X	-	-	-	X	-	O	0112-3112	27.50	-53.00
4100139		367	S	S	S	-	S	-	-	-	-	S	-		0112-2212	20.02	-37.86
4100300	Antilles		-	-	-	-	-	-	-	-	-	-	-			15.85	-57.47
4200059	Caraibes		-	-	-	-	-	-	-	-	-	-	-			15.00	-67.50
4400008	A Nantucket		-	-	-	-	-	-	-	-	-	-	-			40.50	-69.40
4400011	D Georges Bk		-	-	-	-	-	-	-	-	-	-	-			41.10	-66.60
4400018	SE Cape Cod		-	-	-	-	-	-	-	-	-	-	-			41.30	-69.30
4400024	NNE Channel	669	X	X	X	-	X	X	-	-	-	-	-	O	0112-3112	42.30	-65.90
4400137	E Scotia Sl.	732	X	X	X	X	X	X	-	-	-	-	-	O	0112-3112	42.30	-62.00
4400138	SW Gd Banks		-	-	-	-	-	-	-	-	-	-	-			44.30	-53.60
4400139	Beanquereau	734	X	X	X	X	X	X	-	-	-	-	-	O	0112-3112	44.30	-57.10
4400140	Tail of Bk		-	-	-	-	-	-	-	-	-	-	-			43.80	-51.70
4400141	Larentian F	730	X	X	X	X	X	X	-	-	-	-	-	O	0112-3112	43.00	-58.00
4400150	La Have Bk	723	X	X	X	X	X	X	-	-	-	-	-	O	0112-3112	42.50	-64.00

E-SURFMAR DB Monthly Report December 2014

Buoy-QC statistics from Meteo-France model outputs

Datend : Date of the last value received on GTS
Recvd : Total number of values received on GTS
GE : Number of Gross Errors (excluded from bias and sd computations)
bias : Mean differences between observation values and co-located model output values
Std : Standard deviation of differences

Air Pressure (hPa), drifting buoys, December 2014

Datend	WMO	Telcom	Recvd	GE	Bias	Std
20141231	1300868	11686410	744	0	0.1	0.5
20141231	1300869	11688410	744	0	0.0	0.6
20141219	2500615	61660360	453	0	0.3	0.5
20141231	2500616	61762070	744	0	-0.0	0.4
20141231	2500617	61767070	744	0	-0.8	0.5
20141231	2500620	61760090	744	0	0.1	0.5
20141222	2500624	60247420	512	34	0.1	2.2
20141231	2500648	60370080	744	0	-0.1	0.6
20141231	4100969	60213780	742	0	-0.5	0.6
20141231	4100970	60213790	742	0	0.3	0.6
20141231	4100971	60215900	669	0	-0.2	0.6
20141231	4100972	60217780	632	0	-0.1	0.4
20141231	4400546	11160640	744	0	-0.3	0.5
20141231	4400547	60173710	744	0	0.1	0.6
20141231	4400548	11799230	740	0	0.2	0.6
20141231	4400549	60896130	742	0	0.2	0.7
20141231	4400550	60894140	742	0	0.1	0.8
20141231	4400551	60892140	742	0	0.3	0.8
20141231	4400601	60890150	742	0	-0.3	0.6
20141231	4400602	11468700	744	0	-0.4	0.7
20141231	4400603	11793230	739	0	0.4	0.7
20141218	4400604	11794240	418	27	0.4	1.5
20141231	4400605	11473110	744	0	-0.3	0.5
20141231	4400606	11162640	744	0	-0.1	0.5
20141231	4400608	11093800	733	30	0.1	0.5
20141231	4400610	61517860	742	0	0.3	0.7
20141231	4400612	61511880	703	4	-0.3	0.7
20141231	4400613	11475040	744	0	-0.3	0.5
20141231	4400614	61661340	742	0	0.1	0.7
20141231	4400615	61666340	742	0	-1.1	1.0
20141231	4400620	61667370	742	0	0.3	0.8
20141231	4400621	61519840	741	0	0.4	0.8
20141230	4400622	61668320	688	0	0.3	0.6
20141231	4400624	11341110	732	0	-0.2	0.6
20141231	4400625	61668340	653	1	0.2	0.6
20141231	4400725	11027170	744	1	0.1	0.8
20141231	4400739	61516840	742	0	0.6	0.7
20141230	4400740	11883820	562	0	-0.3	0.4
20141231	4400747	61610060	641	1	-0.5	1.0
20141231	4400765	11685410	710	10	0.3	0.8
20141227	4400773	60211790	634	0	-0.0	0.5
20141231	4400774	61477400	744	0	0.6	0.7
20141231	4400775	61476400	743	0	0.4	0.6
20141231	4400776	61474410	744	0	0.5	0.6
20141231	4400777	61475420	743	0	0.1	0.5
20141231	4400778	61475430	744	1	0.2	0.5
20141231	4400779	11885820	744	0	0.1	0.7
20141231	4400835	60218770	743	0	-0.3	0.4
20141231	4400836	60218680	743	0	-0.1	0.7
20141231	4400837	60209590	743	0	-0.1	0.5
20141231	4400839	60205090	743	0	-0.1	0.5
20141207	4400840	60208710	167	0	0.3	0.4
20141231	4400846	60441290	743	0	0.4	0.5
20141231	4400847	60442280	744	0	0.2	0.6
20141231	4400848	60448280	743	0	0.0	0.6
20141231	4400863	60211690	692	0	-0.2	0.5
20141231	4400866	11793240	737	0	-0.3	0.7
20141231	4400867	11593590	744	0	-0.2	0.5
20141231	4400868	11794230	744	0	-0.1	0.7
20141231	4400871	11790240	744	0	-0.0	0.7
20141231	4400872	60202920	744	0	-0.2	0.6
20141231	4400876	60648350	742	0	0.6	0.5

E-SURFMAR DB Monthly Report December 2014

20141231	4400877	60526170	743	0	-0.1	0.5
20141231	4400878	60528170	743	0	-0.0	0.4
20141231	4400880	60556880	743	1	-0.2	0.6
20141231	4400885	60218780	742	0	-0.2	0.5
20141231	4400887	60251440	743	0	-0.1	0.6
20141231	4400888	60359010	743	0	-0.2	0.5
20141231	4400889	60202320	743	0	-0.1	0.4
20141231	4400890	12000230	694	0	-0.1	0.6
20141231	4400891	12007220	737	0	-0.2	0.4
20141231	4400892	60018400	743	0	-0.4	0.7
20141231	6200514	60203700	744	0	-0.0	1.0
20141231	6200516	11475100	744	0	0.3	0.5
20141231	6200536	11599570	744	0	-0.4	0.6
20141231	6200537	11791240	742	0	-0.4	0.6
20141231	6200539	60891140	742	0	0.3	0.7
20141231	6200551	60897120	742	0	-0.1	0.7
20141231	6200552	11797240	744	0	0.0	0.6
20141231	6200553	11165650	744	0	-0.1	0.5
20141231	6200681	11168640	744	0	-0.1	0.5
20141231	6200687	11349100	739	0	-0.3	1.2
20141231	6200695	60408990	732	0	0.0	0.5
20141231	6200713	11246980	731	0	-0.3	0.5
20141231	6200714	11240980	703	0	-0.3	0.5
20141231	6200940	60203850	743	0	-0.1	0.4
20141231	6200941	60207590	743	0	-0.2	0.4
20141229	6300640	60172710	684	12	-0.3	2.0
20141222	6300641	61665210	331	0	-0.4	2.0
20141231	6300644	61766070	744	0	-0.5	1.2
20141215	6400516	11473100	345	18	-0.5	2.4
20141231	6400517	61619060	712	0	0.5	0.8
20141231	6400518	60892150	696	0	0.1	0.7
20141231	6400520	11479040	744	15	-0.4	1.4
20141231	6400521	11470030	744	10	-0.0	1.0
20141231	6400522	61511870	713	0	-0.1	1.0
20141231	6400523	61510870	742	0	-0.1	1.0
20141231	6400524	61619040	742	0	-0.2	0.9
20141231	6400525	60175710	744	10	-0.2	1.4
20141231	6400526	61611070	691	0	0.0	0.9
20141231	6400527	61514840	655	0	0.5	0.9
20141231	6400607	11479100	744	52	-0.5	1.5
20141231	6400613	60174710	744	0	-0.1	0.5
20141231	6400614	60178700	744	0	-0.1	0.7
20141231	6400615	60173700	745	0	0.2	0.6
20141231	6400622	60172810	744	0	-0.1	0.6
20141231	6400623	11470040	744	0	0.2	0.8
20141231	6400665	60171710	744	0	0.3	1.1
20141231	6400666	60179710	744	0	0.2	0.7
20141231	6400667	61615060	595	14	-0.3	1.7
20141231	6400668	60177860	625	45	0.1	1.6
20141231	6400669	60177710	744	0	0.1	1.1
20141231	6400691	61514870	742	0	0.4	0.9
20141231	6400692	60172720	744	0	0.2	0.6
20141231	6500595	11595570	744	6	0.3	1.7
20141231	6500596	61511850	742	0	0.4	1.0
20141231	6500597	11595650	744	0	-0.1	0.8
20141231	6500598	11792240	682	16	-0.1	1.6

Air Pressure (hPa), moored buoys, December 2014

Datend	WMO	Telcom	Recvd	GE	Bias	Std
20141230	1300131		258	0	-0.3	0.7
20141231	6100001		739	0	-1.0	0.6
20141231	6100002		741	1	0.5	0.7
20141231	6100197		741	0	-0.3	0.7
20141231	6100198		462	9	0.1	3.4
20141231	6100207		1331	0	0.6	0.6
20141210	6100210		444	0	0.1	1.2
20141231	6100211		1419	0	0.3	0.6
20141231	6100214		876	0	-0.0	0.5
20141223	6100216		995	0	0.1	0.7
20141229	6100219		1126	0	-0.6	0.6
20141231	6100220		601	0	-0.1	0.9

E-SURFMAR DB Monthly Report December 2014

20141231	6100221	1432	0	-0.4	0.6
20141231	6100280	367	0	0.3	0.8
20141231	6100281	739	0	-0.2	0.8
20141211	6100417	246	0	0.1	0.7
20141231	6100430	679	0	0.3	0.7
20141231	6101001	204	0	0.5	0.7
20141231	6101003	242	0	0.8	0.7
20141231	6101007	248	0	0.1	0.7
20141231	6101008	187	0	0.1	0.7
20141231	6200001	744	0	0.2	0.5
20141231	6200024	739	0	0.3	0.7
20141231	6200025	565	0	0.3	0.6
20141231	6200027	248	0	0.1	0.6
20141231	6200029	728	0	0.2	0.5
20141231	6200030	552	0	0.0	0.5
20141231	6200050	413	0	0.1	0.5
20141231	6200081	744	0	0.2	0.5
20141231	6200082	741	0	0.5	0.6
20141231	6200083	742	0	0.4	0.6
20141231	6200084	740	0	0.5	0.7
20141206	6200085	57	0	0.2	0.7
20141222	6200086	34	0	-1.0	0.7
20141231	6200091	742	1	-0.0	0.6
20141231	6200092	730	0	-0.1	0.7
20141231	6200093	271	2	0.0	1.2
20141231	6200094	740	0	-0.3	0.6
20141218	6200095	395	1	-0.1	0.6
20141231	6200105	742	0	-0.1	0.6
20141231	6200163	744	0	0.2	0.4
20141205	6200191	105	0	0.0	0.5
20141231	6200192	725	0	0.2	0.5
20141231	6200442	744	0	-0.1	0.6
20141231	6400045	742	0	0.2	0.6
20141231	6400046	743	1	0.1	0.9

Air Temperature (C), moored buoys, December 2014

Datend	WMO	Telcom	Recvd	GE	Bias	Std
20141230	1300131		258	0	0.9	0.4
20141231	6100001		739	0	-0.3	0.6
20141231	6100002		741	0	-0.2	0.7
20141231	6100197		741	0	1.2	1.2
20141231	6100198		462	0	0.2	0.7
20141231	6100280		367	0	0.3	0.7
20141231	6100281		739	0	0.6	0.7
20141211	6100417		246	0	0.1	0.5
20141231	6100430		679	0	0.3	0.6
20141231	6101001		204	0	0.1	1.0
20141231	6101007		248	0	1.4	0.7
20141231	6101008		188	0	-0.5	0.9
20141231	6200001		744	0	-0.2	0.5
20141231	6200024		739	0	0.2	0.8
20141231	6200025		565	0	-0.4	0.8
20141231	6200029		728	0	-0.1	0.5
20141231	6200030		552	0	-1.3	1.1
20141231	6200050		413	0	-0.1	0.4
20141231	6200081		744	0	-0.3	0.6
20141231	6200082		741	0	-0.2	0.5
20141231	6200083		742	0	-0.1	0.6
20141231	6200084		740	0	0.4	0.6
20141206	6200085		56	0	-0.0	0.4
20141222	6200086		34	0	-0.7	0.9
20141231	6200091		742	0	-0.1	0.5
20141231	6200092		730	0	-0.3	0.6
20141231	6200093		741	0	-0.4	0.8
20141231	6200094		740	0	-0.1	0.5
20141218	6200095		393	0	-0.7	0.8
20141231	6200105		742	0	-0.5	0.9
20141231	6200163		744	0	-0.2	0.5
20141205	6200191		105	0	-0.5	0.4
20141231	6200192		725	0	-0.1	0.5
20141231	6400045		744	0	-0.8	0.9
20141231	6400046		743	0	-0.7	0.8
20141231	6600021		728	0	-0.0	0.6

E-SURFMAR DB Monthly Report December 2014

20141216	6600022	339	0	0.4	0.8
20141231	6600024	727	0	0.4	0.8

Wind direction (deg.), moored buoys, December 2014

Datend	WMO	Telcom	Recvd	GE	Bias	Std
20141230	1300131		258	4	3	22
20141231	6100001		737	84	-4	35
20141231	6100002		741	2	-4	12
20141231	6100197		735	17	-15	21
20141231	6100198		454	31	-10	29
20141231	6100280		367	6	3	26
20141231	6100281		730	34	7	32
20141211	6100417		243	26	-15	18
20141231	6100430		673	13	-3	27
20141231	6101001		204	25	-2	35
20141231	6101003		242	40	-19	49
20141231	6101007		247	85	0	39
20141231	6101008		188	23	-5	35
20141231	6200001		743	7	-3	19
20141231	6200024		723	17	-2	21
20141231	6200025		562	7	-1	26
20141231	6200027		204	10	9	29
20141231	6200029		726	3	2	13
20141231	6200030		372	12	13	22
20141231	6200050		411	37	10	22
20141231	6200081		744	1	-4	15
20141231	6200082		741	2	4	17
20141231	6200083		738	19	-4	19
20141231	6200084		728	15	-1	20
20141206	6200085		55	0	-11	29
20141222	6200086		29	1	5	9
20141231	6200091		742	1	2	14
20141231	6200092		727	9	5	16
20141231	6200093		741	0	9	11
20141231	6200094		740	0	7	15
20141231	6200105		742	12	0	13
20141231	6200163		741	0	2	14
20141205	6200191		102	0	-2	7
20141231	6200192		723	12	3	13
20141231	6200442		744	0	-2	13
20141215	6400045		349	0	-6	13
20141231	6400046		743	3	4	16
20141231	6600021		733	6	-2	13
20141216	6600022		339	2	-11	13
20141231	6600024		727	4	5	14

Wind speed rate, moored buoys, December 2014

Datend	WMO	Telcom	Recvd	GE	Rate	Err
20141230	1300131		258	0	0.9	2.3
20141231	6100001		737	3	1.2	1.9
20141231	6100002		741	0	1.1	1.8
20141231	6100197		735	0	1.0	1.7
20141231	6100198		454	0	1.2	2.6
20141231	6100280		367	0	1.3	2.2
20141231	6100281		730	0	1.1	1.9
20141211	6100417		243	0	1.1	1.5
20141231	6100430		673	0	1.0	1.8
20141231	6101001		204	0	1.0	1.9
20141231	6101003		242	0	0.8	2.6
20141231	6101007		247	2	0.6	5.3
20141231	6101008		188	0	1.2	2.2
20141231	6200001		743	0	1.1	1.8
20141231	6200024		723	0	1.1	1.7
20141231	6200025		562	1	0.8	2.3
20141231	6200027		204	2	1.0	1.5
20141231	6200029		726	0	1.0	1.1
20141231	6200030		372	0	0.6	4.0
20141231	6200050		411	0	1.0	1.3
20141231	6200081		744	0	1.0	1.2

E-SURFMAR DB Monthly Report December 2014

20141231	6200082	741	1	0.9	1.4
20141231	6200083	738	0	1.0	1.5
20141231	6200084	728	0	1.0	1.4
20141206	6200085	55	0	0.9	1.1
20141222	6200086	28	0	1.1	1.0
20141231	6200091	742	0	1.0	1.5
20141231	6200092	727	1	0.9	1.6
20141231	6200093	741	0	0.9	1.6
20141231	6200094	740	0	1.0	1.4
20141231	6200105	742	1	0.9	2.3
20141231	6200163	741	0	1.0	1.1
20141205	6200191	102	10	0.0	0.0
20141231	6200192	723	0	1.0	1.3
20141231	6200442	744	0	1.0	1.3
20141215	6400045	349	0	1.0	1.8
20141231	6400046	743	1	1.0	1.7
20141231	6600021	733	0	1.1	1.3
20141216	6600022	339	0	1.1	0.9
20141231	6600024	727	0	1.1	1.5

Comments on QC statistics :

Air pressure

1. Metocean buoys WMO **2500624**, **4400604**, **6300640**, **6300641** and **6400516** reported wrong pressure data before the transmission was stopped for this parameter.
2. Metocean buoys WMO **4400608**, **4400765**, **6400607**, **6400667**, **6400668** and **6500598** temporarily reported wrong pressure data in December for unknown reasons but not enough to have their GTS transmission stopped.

Air temperature

3. Air temperature measurements, carried out by Greek Poseidon buoy WMO **6101007**, continue to be systematically biased for about 1,4 °C.

Wind

4. On the 15th of December; a correction was applied on wind speed values reported by Poseidon moored buoy WMO **6101007**. They have been right since this date.
5. It seems that, since the 19th of December, wind speed observation reported by English moored buoy L4 (WMO **6200030**) are twice too low.
6. Portuguese moored buoy WMO **6200191** continued to report abnormal calm till the 5th of December although it was adrift.

Monthly QC statistics and other data quality control tools are available on line at :

<http://www.meteo.shom.fr/qctools/>

The working area of the E-SURFMAR website is open at <http://esurfmar.meteo.fr/wikisurf-wa/> . Ask the E-SURFMAR Programme Manager Pierre.Blouch@meteo.fr for the password in case you forgot it. Graphs of system performances may be displayed/downloaded at http://esurfmar.meteo.fr/doc/r/surfmar/others/e-surfmar_monitoring.pdf.