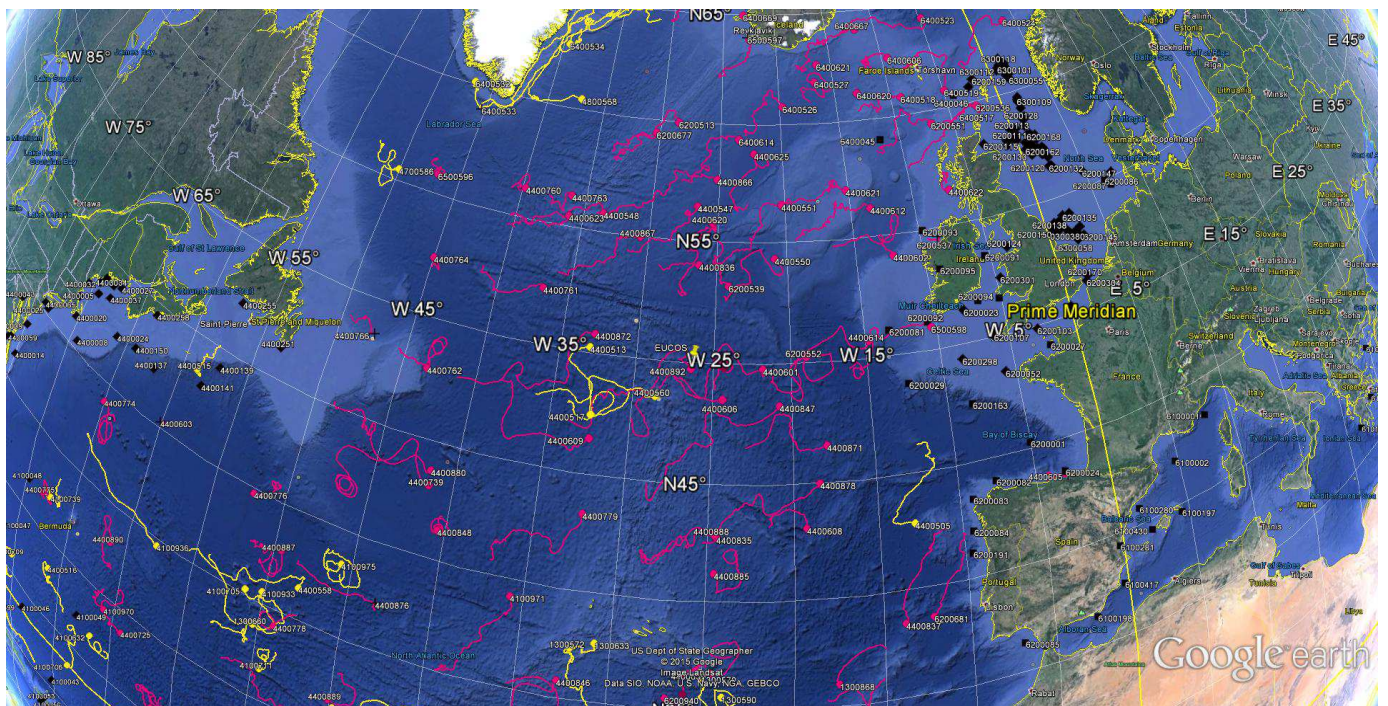


DATA BUOY MONTHLY REPORT

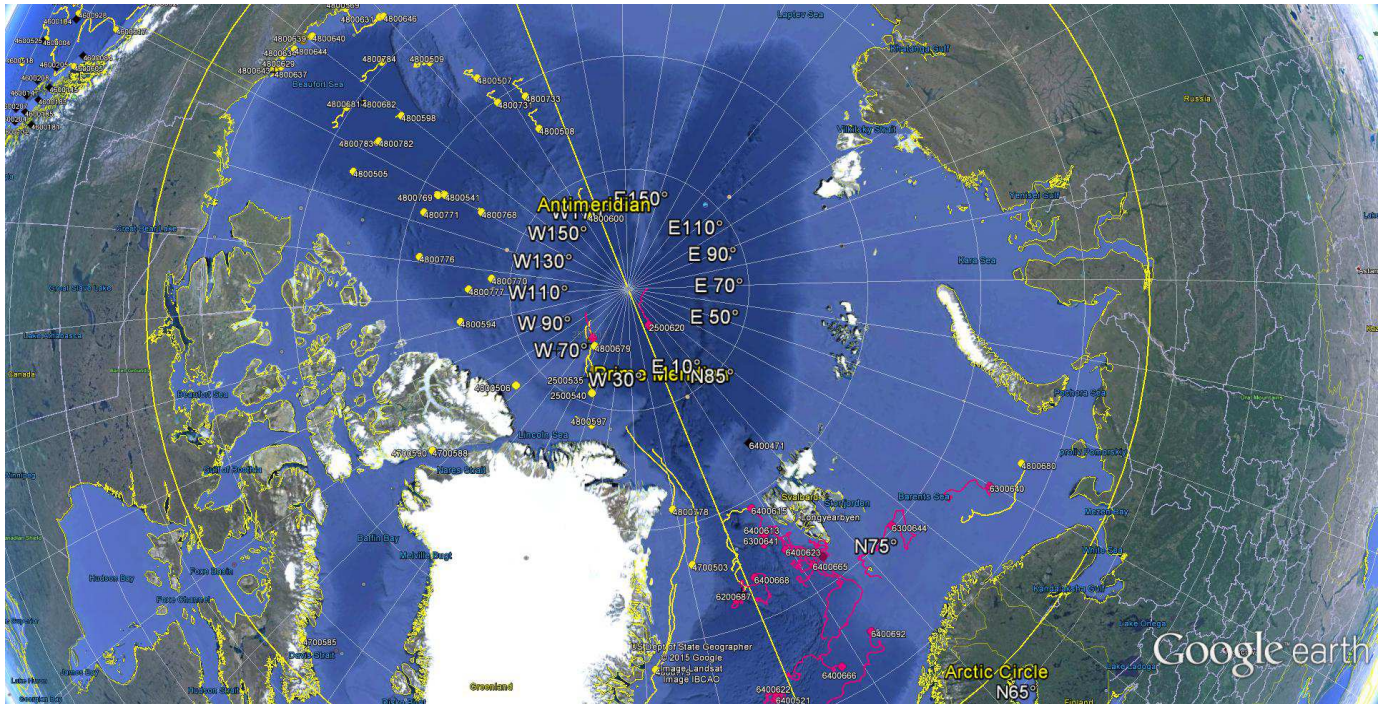
March 2015



*March 2015 : Operating data buoys in the North Atlantic
Drifting buoy trajectories : E-SURFMAR (red), others (yellow)
Moored buoy positions (black)*

*Most recent trajectories may be seen at:
http://www.meteo.shom.fr/cartographie/data/kml/MeteoFrance_buoys_map_15.kmz*

E-SURFMAR DB Monthly Report March 2015



March 2015
Drifting buoy trajectories in Arctic Ocean and adjacent seas : E-SURFMAR (red), others (yellow)

DRIFTING BUOYS

Network status

By the end of March, **121 Drifting buoys**, reporting air pressure onto the GTS, were in operation in the frame of E-SURFMAR. Out of these, 86 were E-SURFMAR funded Iridium SVP-Bs, including 5 in the Arctic and 9 HRSST-2 buoys. The remaining buoys were: 35 Iridium drifters owned by NOAA and upgraded with barometers by E-SURFMAR.

Information about the availability of buoys for future deployments may be get from the E-SURFMAR wikisite (working area) at: http://esurfmar.meteo.fr/wikisurf-wa/index.php/Availability_of_drifting_buoys

Besides E-SURFMAR buoys, 63 drifting buoys were reporting at least air pressure observations from the EUMETNET area of interest. Out of these, only one was reporting Sea Surface Salinity.

Drifting buoys - New deployments

WMO	Telcom	Typ	Ow	Dep_Date	DepLat	DepLon	From	Comment
1300870	61512860	MSB	EU	20150313	35.0	-16.0	Brest	Thalassa
1300871	61516870	MSB	EU	20150315	25.0	-21.3	Brest	Thalassa
1300872	61611050	MSB	EU	20150314	29.0	-19.3	Brest	Thalassa
4400513	61475450	DSB	UP	20150309	47.9	-36.2	Norfolk	Atlantic Conveyor
4400515	61476450	DSB	UP	20150307	45.1	-57.8	Norfolk	Atlantic Conveyor
4400517	61477390	DSB	UP	20150310	48.7	-30.3	Norfolk	Atlantic Conveyor
4400518	61569370	DSB	UP	20150308	46.3	-49.0	Norfolk	Atlantic Conveyor - failed at depl
4400763	61667330	MSB	EU	20150315	56.3	-38.0	Reykjavik	Skogafoss
4400764	61662330	MSB	EU	20150316	52.0	-45.0	Reykjavik	Skogafoss
4400766	61663340	MSB	EU	20150317	49.0	-49.4	Reykjavik	Skogafoss
6200677	61663310	MSB	EU	20150315	58.6	-34.0	Reykjavik	Skogafoss
6400620	60899130	MSB	EU	20150328	61.4	-12.9	Rotterdam	Lagarfoss
6400621	61614070	MSB	EU	20150329	62.7	-16.6	Rotterdam	Lagarfoss

Operating drifting buoys in North Atlantic by the end of the month

WMO	Telcom	Typ	Ow	nobs	Wi	AT	AP	dP	ST	Wa	Ws	Dr	Sb	U	SS	O	Start_end	Lat	Lon	Age
1300868	11686410	MSB	EU	741	-	-	X	X	X	-	-	X	-	-	-	T	0103-3103	36.11	-17.59	131
1300869	11688410	MSB	EU	741	-	-	X	X	X	-	-	X	-	-	-	T	0103-3103	24.30	-29.14	129
1300870	61512860	MSB	EU	444	-	-	X	X	X	-	-	X	-	-	-	T	1303-3103	33.66	-16.38	19
1300871	61516870	MSB	EU	351	-	-	X	X	X	-	-	X	-	-	-	T	1603-3103	22.95	-24.18	17
1300872	61611050	MSB	EU	371	-	-	X	X	X	-	-	X	-	-	-	T	1603-3103	26.20	-20.52	18
2500616	61762070	MSB	EU	741	-	-	X	X	X	-	-	X	-	-	-	T	0103-3103	75.09	155.12	238
2500617	61767070	MSB	EU	741	-	-	X	X	X	-	-	X	-	-	-	T	0103-3103	87.53	-58.36	192
2500620	61760090	MSB	EU	741	-	-	X	X	X	-	-	X	-	-	-	T	0103-3103	88.28	8.40	186
4100969	60213780	PSB	UP	635	-	-	X	X	X	-	-	X	-	-	-	T	0503-3103	22.28	-45.30	601
4100970	60213790	PSB	UP	742	-	-	X	X	X	-	-	X	-	-	-	T	0103-3103	29.32	-60.72	600
4100971	60215900	PSB	UP	742	-	-	X	X	X	-	-	X	-	-	-	T	0103-3103	39.29	-35.70	600
4100972	60217780	PSB	UP	742	-	-	X	X	X	-	-	X	-	-	-	T	0103-3103	28.00	-48.88	600
4400513	61475450	DSB	UP	530	-	-	X	X	X	-	-	X	-	-	-	T	0903-3103	50.24	-33.02	23
4400515	61476450	DSB	UP	582	-	-	X	X	X	-	-	X	-	-	-	T	0703-3103	43.56	-58.75	25
4400517	61477390	DSB	UP	515	-	-	X	X	X	-	-	X	-	-	-	T	1003-3103	47.50	-32.44	22
4400546	11160640	MSB	EU	741	-	-	X	X	X	-	-	X	-	-	-	T	0103-3103	26.88	-32.05	742
4400547	60173710	MSB	EU	741	-	-	X	X	X	-	-	X	-	-	-	T	0103-3103	56.45	-26.57	233
4400548	11799230	MSB	E2	741	-	-	X	X	X	-	-	X	-	-	-	T	0103-3103	55.78	-33.52	233
4400549	60896130	MSB	EU	742	-	-	X	X	X	-	-	X	-	-	-	T	0103-3103	49.87	-24.34	206
4400550	60894140	MSB	EU	742	-	-	X	X	X	-	-	X	-	-	-	T	0103-3103	54.33	-20.91	206
4400551	60892140	MSB	EU	742	-	-	X	X	X	-	-	X	-	-	-	T	0103-3103	56.57	-20.28	206
4400601	60890150	MSB	EU	741	-	-	X	X	X	-	-	X	-	-	-	T	0103-3103	49.80	-21.83	205
4400602	11468700	MSB	UP	741	-	-	X	X	X	-	-	X	-	-	-	T	0103-3103	54.14	-12.29	740
4400605	11473110	MSB	EU	713	-	-	X	X	X	-	-	X	-	-	-	T	0103-3003	43.43	-2.95	689
4400606	11162640	MSB	EU	741	-	-	X	X	X	-	-	X	-	-	-	T	0103-3103	48.55	-24.38	174

E-SURFMAR DB Monthly Report
March 2015

4400608	11093800	MSB	E2	738	-	-	X	X	X	-	-	X	-	-	T	0103-3103	43.15	-19.29	173
4400609	61613050	MSB	EU	741	-	-	X	X	X	-	-	X	-	-	T	0103-3103	46.52	-32.36	55
4400612	61511880	MSB	EU	677	-	-	X	X	X	-	-	X	-	-	T	0103-3103	56.21	-13.49	465
4400613	11475040	MSB	EU	741	-	-	X	X	X	-	-	X	-	-	T	0103-3103	32.90	-16.55	756
4400614	61661340	MSB	EU	741	-	-	X	X	X	-	-	X	-	-	T	0103-3103	50.73	-14.78	336
4400620	61667370	MSB	EU	742	-	-	X	X	X	-	-	X	-	-	T	0103-3103	55.78	-25.44	335
4400621	61519840	MSB	EU	715	-	-	X	X	X	-	-	X	-	-	T	0103-3103	57.05	-15.21	416
4400622	61668320	MSB	EU	742	-	-	X	X	X	-	-	X	-	-	T	0103-3103	56.50	-7.00	334
4400623	61669330	MSB	EU	742	-	-	X	X	X	-	-	X	-	-	T	0103-3103	55.45	-36.03	54
4400624	11341110	YSB	EU	724	-	-	X	X	X	-	-	X	-	-	T	0103-3103	25.49	-20.79	841
4400625	61668340	MSB	EU	607	-	-	X	X	X	-	-	X	-	-	T	0103-3103	58.74	-22.29	334
4400725	11027170	MSB	EU	741	-	-	X	X	X	-	-	X	-	-	T	0103-3103	28.82	-59.14	1012
4400739	61516840	MSB	EU	742	-	-	X	X	X	-	-	X	-	-	T	0103-3103	43.15	-41.45	302
4400740	11883820	PSB	UP	742	-	-	X	X	X	-	-	X	-	-	T	0103-3103	26.93	-51.73	997
4400747	61610060	MSB	EU	723	-	-	X	X	X	-	-	X	-	-	T	0103-3103	65.46	-34.59	462
4400760	61662360	MSB	EU	742	-	-	X	X	X	-	-	X	-	-	T	0103-3103	56.24	-39.72	54
4400761	61669320	MSB	EU	742	-	-	X	X	X	-	-	X	-	-	T	0103-3103	52.32	-36.80	54
4400762	61664310	MSB	EU	742	-	-	X	X	X	-	-	X	-	-	T	0103-3103	47.92	-43.24	53
4400763	61667330	MSB	EU	373	-	-	X	X	X	-	-	X	-	-	T	1603-3103	56.31	-36.11	17
4400764	61662330	MSB	EU	367	-	-	X	X	X	-	-	X	-	-	T	1603-3103	52.44	-44.94	17
4400766	61663340	MSB	EU	298	-	-	X	X	X	-	-	X	-	-	T	1703-2903	48.58	-47.35	13
4400773	60211790	PSB	UP	653	-	-	X	X	X	-	-	X	-	-	T	0103-3103	23.72	-57.67	626
4400774	61477400	DSB	UP	738	-	-	X	X	X	-	-	X	-	-	T	0103-3103	39.20	-64.92	136
4400775	61476400	DSB	UP	740	-	-	X	X	X	-	-	X	-	-	T	0103-3103	32.11	-67.94	136
4400776	61474410	DSB	UP	740	-	-	X	X	X	-	-	X	-	-	T	0103-3103	39.83	-52.08	135
4400778	61475430	DSB	UP	740	-	-	X	X	X	-	-	X	-	-	T	0103-3103	34.26	-48.98	134
4400779	61473400	DSB	UP	740	-	-	X	X	X	-	-	X	-	-	T	0103-3103	43.35	-32.21	134
4400835	60218770	PSB	UP	742	-	-	X	X	X	-	-	X	-	-	T	0103-3103	42.81	-24.48	393
4400836	60218680	PSB	UP	742	-	-	X	X	X	-	-	X	-	-	T	0103-3103	54.03	-26.25	393
4400837	60209490	PSB	UP	742	-	-	X	X	X	-	-	X	-	-	T	0103-3103	38.55	-13.82	393
4400839	60205090	PSB	UP	742	-	-	X	X	X	-	-	X	-	-	T	0103-3103	36.81	-24.49	393
4400846	60441290	DSB	UP	741	-	-	X	X	X	-	-	X	-	-	T	0103-3103	35.86	-32.69	430
4400847	60442280	DSB	UP	741	-	-	X	X	X	-	-	X	-	-	T	0103-3103	48.29	-20.80	430
4400848	60448280	DSB	UP	741	-	-	X	X	X	-	-	X	-	-	T	0103-3103	41.37	-40.42	429
4400863	60211690	PSB	UP	742	-	-	X	X	X	-	-	X	-	-	T	0103-3103	30.34	-38.33	624
4400866	11793240	MSB	E2	741	-	-	X	X	X	-	-	X	-	-	T	0103-3103	57.62	-25.18	284
4400867	11593590	MSB	EU	741	-	-	X	X	X	-	-	X	-	-	T	0103-3103	55.01	-30.60	282
4400868	11794230	MSB	E2	740	-	-	X	X	X	-	-	X	-	-	T	0103-3103	30.24	-47.77	693
4400871	11790240	MSB	E2	741	-	-	X	X	X	-	-	X	-	-	T	0103-3103	46.58	-17.93	278
4400872	60202920	MSB	EU	741	-	-	X	X	X	-	-	X	-	-	T	0103-3103	50.80	-32.81	278
4400877	60526170	PSB	UP	742	-	-	X	X	X	-	-	X	-	-	T	0103-3103	35.80	-25.97	421
4400878	60528170	PSB	UP	742	-	-	X	X	X	-	-	X	-	-	T	0103-3103	45.02	-18.45	421
4400880	60656880	PSB	UP	742	-	-	X	X	X	-	-	X	-	-	T	0103-3103	43.80	-41.50	422
4400885	60218780	PSB	UP	742	-	-	X	X	X	-	-	X	-	-	T	0103-3103	41.27	-24.55	306
4400887	60251440	PSB	UP	742	-	-	X	X	X	-	-	X	-	-	T	0103-3103	37.93	-49.44	308
4400888	60359010	PSB	UP	742	-	-	X	X	X	-	-	X	-	-	T	0103-3103	42.93	-24.62	306
4400889	60202320	PSB	UP	742	-	-	X	X	X	-	-	X	-	-	T	0103-3103	31.82	-45.08	307
4400890	12000230	PSB	UP	742	-	-	X	X	X	-	-	X	-	-	T	0103-3103	33.12	-61.18	306
4400891	12007220	PSB	UP	742	-	-	X	X	X	-	-	X	-	-	T	0103-3103	29.24	-33.63	304
4400892	60018400	PSB	UP	722	-	-	X	X	X	-	-	X	-	-	T	0103-3103	49.76	-26.44	305
6200513	61665360	MSB	EU	742	-	-	X	X	X	-	-	X	-	-	T	0103-3103	59.98	-28.53	55
6200514	60203700	MSB	E2	741	-	-	X	X	X	-	-	X	-	-	T	0103-3103	67.24	-2.90	768
6200516	11475100	MSB	EU	741	-	-	X	X	X	-	-	X	-	-	T	0103-3103	28.31	-21.52	694
6200536	11599570	MSB	EU	741	-	-	X	X	X	-	-	X	-	-	T	0103-3103	59.82	-2.52	296
6200539	60891140	MSB	EU	742	-	-	X	X	X	-	-	X	-	-	T	0103-3103	53.19	-24.14	208
6200551	60897120	MSB	EU	742	-	-	X	X	X	-	-	X	-	-	T	0103-3103	59.44	-7.02	208
6200552	11797240	MSB	E2	739	-	-	X	X	X	-	-	X	-	-	T	0103-3103	50.26	-19.01	173
6200553	11165650	MSB	EU	741	-	-	X	X	X	-	-	X	-	-	T	0103-3103	76.20	14.18	738
6200677	61663310	MSB	EU	371	-	-	X	X	X	-	-	X	-	-	T	1603-3103	59.44	-30.29	17
6200681	11168640	MSB	EU	741	-	-	X	X	X	-	-	X	-	-	T	0103-3103	38.66	-12.19	866
6200687	11349100	YSB	EU	740	-	-	X	X	X	-	-	X	-	-	T	0103-3103	76.28	-2.93	845
6200695	60408990	MSB	E2	741	-	-	X	X	X	-	-	X	-	-	T	0103-3103	25.74	-34.01	694
6200713	11246980	YSB	EU	726	-	-	X	X	X	-	-	X	-	-	T	0103-3103	25.49	-56.13	840
6200714	11240980	YSB	EU	736	-	-	X	X	X	-	-	X	-	-	T	0103-3103	25.73	-56.30	837
6200940	60203850	PSB	UP	742	-	-	X	X	X	-	-	X	-	-	T	0103-3103	35.58	-26.91	303
6200941	61516840	PSB	UP	742	-	-	X	X	X	-	-	X	-	-	T	0103-3103	33.26	-32.01	303
6300640	60172710	MSB	EU	741	-	-	X	X	X	-	-	X	-	-	T	0103-3103	72.44	39.84	595
6300641	61665210	MSB	EU	681	-	-	X	X	X	-	-	X	-	-	T	0303-3103	78.01	6.08	182
6300644	61766070	MSB	EU	741	-	-	X	X	X	-	-	X	-	-	T	0103-3103	75.13	26.40	181
6400517	61619060	MSB	EU	642	-	-	X	X	X	-	-	X	-	-	T	0103-3103	59.64	-2.30	140
6400518	60892150	MSB	EU	722	-	-	X	X	X	-	-	X	-	-	T	0103-3103	60.81	-9.12	139
6400519	61518850	MSB	EU	742	-	-	X	X	X	-	-	X	-	-	T	0103-3103	60.77	-4.97	73
6400520	11479040	MSB	EU	741	-	-	X	X	X	-	-	X	-	-	T	0103-3103	70.40	-3.11	690
6400521	11470030	MSB	EU	741	-	-	X	X	X	-	-	X	-	-	T	0103-3103	71.45	-2.37	688
6400522	61511870	MSB	EU	735	-	-	X	X	X	-	-	X	-	-	T	0103-3103	67.56	9.07	221
6400523	61510870	MSB	EU	742	-	-	X	X	X	-	-	X	-	-	T	0103-3103	64.21	-4.84	143

E-SURFMAR DB Monthly Report March 2015

6400524	61619040	MSB	EU	742	-	-	X	X	X	-	-	X	-	-	-	T	0103-3103	63.20	3.63	143
6400525	60175710	MSB	EU	741	-	-	X	X	X	-	-	X	-	-	-	T	0103-3103	70.02	-7.51	592
6400526	61611070	MSB	EU	704	-	-	X	X	X	-	-	X	-	-	-	T	0103-3103	60.78	-19.76	141
6400527	61514840	MSB	EU	680	-	-	X	X	X	-	-	X	-	-	-	T	0103-3103	61.84	-16.73	140
6400606	61515870	MSB	EU	600	-	-	X	X	X	-	-	X	-	-	-	T	0103-3103	62.63	-9.44	69
6400613	60174710	MSB	EU	741	-	-	X	X	X	-	-	X	-	-	-	T	0103-3103	78.40	7.21	577
6400614	60178700	MSB	EU	742	-	-	X	X	X	-	-	X	-	-	-	T	0103-3103	59.36	-23.52	573
6400615	60173700	MSB	EU	741	-	-	X	X	X	-	-	X	-	-	-	T	0103-3103	79.62	7.45	508
6400620	60899130	MSB	EU	35	-	-	X	X	X	-	-	X	-	-	-	T	3003-3103	61.20	-13.02	4
6400621	61614070	MSB	EU	35	-	-	X	X	X	-	-	X	-	-	-	T	3003-3103	62.62	-16.34	3
6400622	60172810	MSB	EU	741	-	-	X	X	X	-	-	X	-	-	-	T	0103-3103	71.69	-2.12	593
6400623	11470040	MSB	EU	741	-	-	X	X	X	-	-	X	-	-	-	T	0103-3103	77.34	9.25	689
6400665	60171710	MSB	EU	741	-	-	X	X	X	-	-	X	-	-	-	T	0103-3103	76.18	12.00	489
6400666	60179710	MSB	EU	741	-	-	X	X	X	-	-	X	-	-	-	T	0103-3103	71.51	7.49	489
6400667	61615060	MSB	EU	594	-	-	X	X	X	-	-	X	-	-	-	T	0103-3103	64.12	-12.01	461
6400668	60177860	MSB	EU	741	-	-	X	X	X	-	-	X	-	-	-	T	0103-3103	76.90	1.60	465
6400669	60177710	MSB	EU	741	-	-	X	X	X	-	-	X	-	-	-	T	0103-3103	64.97	-23.09	461
6400692	60172720	MSB	EU	741	-	-	X	X	X	-	-	X	-	-	-	T	0103-3103	72.16	13.47	404
6500596	61511850	MSB	EU	742	-	-	X	X	X	-	-	X	-	-	-	T	0103-3103	55.83	-46.76	286
6500598	11792240	MSB	E2	741	-	-	X	X	X	-	-	X	-	-	-	T	0103-3103	50.96	-10.39	280

----- Drifting buoys which ceased to be operational

WMO	Telcom	Typ	Ow	End_Date	Lat	Lon	Age	Cause
4400603	11793230	MSB	E2	20150307	40.3	-60.0	152	Unknown
4400765	11685410	MSB	EU	20150324	33.1	-16.3	726	Ashore in Porto Santo (Madeira)
4400876	60648350	DSB	UP	20150317	37.3	-43.2	416	Unknown
6200537	11791240	MSB	E2	20150307	54.7	-8.8	272	Ashore in Ireland
6500597	11595650	MSB	EU	20150318	63.9	-22.7	279	Ashore in Iceland

----- Non-operating drifting buoys reporting GTS data

WMO	Telcom	Typ	Ow	nobs	Wi	AT	AP	dP	ST	Wa	Ws	Dr	Sb	U	SS	O	Start_end	Lat	Lon	Age
2500624	60247420	MSB	EU	741	-	-	-	-	X	-	-	X	-	-	-	T	0103-3103	67.85	-14.07	578
2500652	60176700	MSB	EU	741	-	-	-	-	X	-	-	X	-	-	-	T	0103-3103	84.25	29.69	566
4400604	11794240	MSB	E2	737	-	-	-	-	X	-	-	X	-	-	-	T	0103-3103	46.09	-48.76	175
6200538	11460700	MSB	UP	741	-	-	-	-	X	-	-	X	-	-	-	T	0103-3103	63.93	-12.94	295
6500595	11595570	MSB	EU	738	-	-	-	-	X	-	-	X	-	-	-	T	0103-3103	53.78	-45.54	288

----- Non-operating drifting buoys which ceased to emit

WMO	Telcom	Typ	Ow	End_Date	Lat	Lon	Age	Cause
6400691	61514870	MSB	EU	20150306	51.7	-50.2	392	Unknown

----- Other operating drifting buoys inside the EUMETNET area by the end of the month

WMO	Telcom	Typ	Ow	nobs	Wi	AT	AP	dP	ST	Wa	Ws	Dr	Sb	U	SS	O	Start_end	Lat	Lon
1300515	114951	AOML		691	-	-	X	-	X	-	-	X	-	-	-	L	0103-3103	21.78	-37.18
1300517	114943	AOML		637	-	-	X	-	X	-	-	X	-	-	-	L	0103-3103	16.49	-25.50
1300519	127004	AOML		693	-	-	X	X	X	-	-	X	-	-	-	L	0103-3103	16.25	-31.21
1300523	114877	AOML		663	-	-	X	-	X	-	-	X	-	-	-	L	0103-3103	4.66	-44.59
1300525	127003	AOML		724	-	-	X	X	X	-	-	X	-	-	-	L	0103-3103	5.41	-44.84
1300529	127005	AOML		701	-	-	X	X	X	-	-	X	-	-	-	L	0103-3003	15.07	-23.47
1300530	114916	AOML		651	-	-	X	-	X	-	-	X	-	-	-	L	0103-3103	13.04	-23.37
1300531	114921	AOML		665	-	-	X	-	X	-	-	X	-	-	-	L	0103-3103	11.22	-42.72
1300569	114880	AOML		712	-	-	X	-	X	-	-	X	-	-	-	L	0103-3103	30.77	-32.97
1300570	116474	AOML		742	-	-	X	-	X	-	-	X	-	-	-	L	0103-3103	36.63	-25.03
1300572	127002	AOML		743	-	-	X	X	X	-	-	X	-	-	-	L	0103-3103	37.46	-32.14
1300590	139285	AOML		330	-	-	X	X	X	-	-	X	-	-	-	L	0203-3103	35.72	-23.92
1300633	109491	AOML		742	-	-	X	X	X	-	-	X	-	-	-	L	0103-3103	37.81	-30.84
1300659	11910180	UKMO		741	-	-	X	X	X	-	-	X	-	-	-	T	0103-3103	27.55	-52.42

E-SURFMAR DB Monthly Report March 2015

1300660	11022040	UKMO	741	-	-	X	X	X	-	-	X	-	-	-	T	0103-3103	33.84	-50.28
1300661	62325770	UKMO	741	-	-	X	X	X	-	-	X	-	-	-	T	0103-3103	10.92	-22.18
1300662	11098800	UKMO	740	-	-	X	X	X	-	-	X	-	-	-	T	0103-3103	27.49	-46.76
1300664	11090810	UKMO	741	-	-	X	X	X	-	-	X	-	-	-	T	0103-3103	20.38	-46.28
1500549	60794980	UKMO	679	-	-	X	X	S	-	-	X	-	-	-	T	0103-2903	10.18	-61.00
2100942	119223	AOML	727	-	-	X	X	X	-	-	X	-	-	-	L	0103-3103	28.73	-25.20
2500540		APL	744	-	-	X	X	X	-	-	-	-	-	-	L	0103-3103	85.48	-41.51
2500575			745	-	-	X	X	-	-	-	-	-	-	-	L	0103-3103	86.39	-45.34
3100515			646	-	-	X	-	X	-	-	X	-	-	-	L	0103-3103	12.00	-52.23
3100717	61614160	CMM	742	-	-	X	X	X	-	-	X	-	-	-	T	0103-3103	18.27	-55.68
3100862	61213570	LOCE	1484	-	-	X	X	X	-	-	X	-	-	X	T	0103-3103	1.98	2.98
3100863	61611040	CMM	725	-	-	X	X	X	-	-	X	-	-	-	T	0103-3103	20.41	-52.79
4100560	114550	AOML	741	-	-	X	-	-	-	-	X	-	-	-	L	0103-3103	30.73	-25.36
4100564	109221	AOML	731	-	-	X	-	X	-	-	X	-	-	-	L	0103-3103	32.59	-37.18
4100580	132677	AOML	709	-	-	X	X	X	-	-	X	-	-	-	L	0103-3103	16.19	-43.33
4100590	132676	AOML	718	-	-	X	X	X	-	-	X	-	-	-	L	0103-3103	18.08	-57.82
4100591	132678	AOML	716	-	-	X	X	X	-	-	X	-	-	-	L	0103-3103	16.42	-49.81
4100594	127029	AOML	705	-	-	X	X	X	-	-	X	-	-	-	L	0103-3103	20.45	-43.29
4100596	11473050	EUME	741	-	-	X	X	X	-	-	X	-	-	-	T	0103-3103	22.98	-57.12
4100597	61512840	AOML	742	-	-	X	X	X	-	-	X	-	-	-	T	0103-3103	23.11	-55.76
4100598	61610040	AOML	742	-	-	X	X	X	-	-	X	-	-	-	T	0103-3103	22.52	-45.60
4100600	61618040	AOML	742	-	-	X	X	X	-	-	X	-	-	-	T	0103-3103	16.21	-59.76
4100632	11474050	EUME	741	-	-	X	X	X	-	-	X	-	-	-	T	0103-3103	27.02	-61.60
4100705	11596570	AOML	741	-	-	X	X	X	-	-	X	-	-	-	T	0103-3103	35.34	-51.18
4100706	11595580	AOML	741	-	-	X	X	X	-	-	X	-	-	-	T	0103-3103	23.59	-63.41
4100711	11477030	EUME	741	-	-	X	X	X	-	-	X	-	-	-	T	0103-3103	31.79	-49.41
4100739	11912120	UKMO	741	-	-	X	X	-	-	-	X	-	-	-	T	0103-3103	32.39	-67.06
4100933	101721	AOML	744	-	-	X	X	X	-	-	X	-	-	-	L	0103-3103	35.62	-50.08
4100936	109488	AOML	618	-	-	X	X	S	-	-	X	-	-	-	L	0103-3103	34.75	-57.71
4100975	109439	AOML	683	-	-	X	X	X	-	-	X	-	-	-	L	0103-3103	38.49	-45.63
4400505	98087	ICEP	1720	-	-	X	X	X	-	-	-	-	-	-	L	0103-3103	42.90	-12.92
4400516	114599	AOML	715	-	-	X	X	X	-	-	X	-	-	-	L	0103-3103	28.44	-66.08
4400554	126479	AOML	717	-	-	X	X	X	-	-	X	-	-	-	L	0103-3103	31.48	-44.75
4400558	123286	AOML	744	-	-	X	X	X	-	-	X	-	-	-	L	0103-3103	36.61	-47.90
4400560	126480	AOML	721	-	-	X	X	-	-	-	X	-	-	-	L	0103-3103	48.55	-28.60
4400764			367	-	-	X	X	X	-	-	X	-	-	-	T	1603-3103	52.44	-44.94
4400896	109438	AOML	728	-	-	X	X	X	-	-	X	-	-	-	L	0103-3103	31.08	-39.52
4700503		APL	745	-	-	X	X	-	-	-	-	-	-	-	L	0103-3103	78.27	-9.03
4700585	11541430	EC	741	-	-	X	X	X	-	-	-	-	-	-	O	0103-3103	68.22	-66.65
4700586	11541440	EC	741	-	-	X	X	X	-	-	X	-	-	-	O	0103-3103	55.48	-49.95
4800568	61363210	PSC	740	-	-	X	X	X	-	-	X	-	-	-	O	0103-3103	60.46	-37.05
4800597	100009	PSC	1443	X	X	X	-	-	-	-	X	-	-	-	O	0103-3103	84.23	-37.42
4800679			502	-	-	X	X	-	-	-	X	-	-	-	T	1003-3103	87.29	-52.62
4800778	60894080	EC	742	-	-	X	X	-	-	-	-	-	-	-	O	0103-3103	80.75	-10.65
4800779	60890090	EC	741	-	-	X	X	-	-	-	-	-	-	-	O	0103-3103	73.87	-18.40
6300546	61361200	PSC	740	-	-	X	X	X	-	-	X	-	-	-	O	0103-3103	69.31	-9.71
6400532			744	-	-	X	X	X	-	-	-	-	-	-	L	0103-3103	60.13	-46.70
6400534			744	-	-	X	X	X	-	-	-	-	-	-	L	0103-3103	62.79	-39.45
6400535			744	-	-	X	X	X	-	-	-	-	-	-	L	0103-3103	69.97	-21.73

----- Abbreviations -----

WMO : WMO id.
 Argos : Argos id.
 Typ : Buoy type
 - first character : Manufacturer (C = ConMar , M = Metocean, P = Pacific Gyre
 T = Technocean, Y = Marlin-Yug...)
 - second character : Main type (F = FGGE, I = ICEB, S = SVP)
 - third character : Sub type (B = barometer buoy, W = Wind buoy,
 S = Salinity buoy)
 Ow : Buoy owner (country code or EU for EUCOS, E2 for HRSST-2 buoys, UP for upgraded
 buoys)
 Owner : Buoy owner for non EUCOS buoys
 Nobs : number of GTS reports received at Meteo-France
 Parameters (X = OK, S = stopped, - = not measured) :
 Wi : Wind
 AT : Air Temperature
 AP : Air Pressure
 dP : Air pressure tendency
 ST : Sea surface Temperature
 Wa : Wave period and height
 Ws : Wave spectra

E-SURFMAR DB Monthly Report March 2015

Dr : Drogue presence
 Sb : Subsurface temperature
 U : Relative humidity
 SS : Sea surface Salinity
 O : Origin of the reports (T = Argos Toulouse, L = Argos Largo, O = Other)
 Start_end : first and last dates of the month for which GTS data were received at Meteo-France
 Lat : Latitude of the latest position
 Lon : Longitude of the latest position
 Age : Age of the buoy (days)

 DepDate : Date of deployment
 DepLat : Latitude of deployment
 Dep Lon : Longitude of Deployment
 From : Harbour of departure

Definition : An operating drifting buoy is a buoy providing at least air pressure or wind (direction and velocity) data.

----- MOORED BUOYS -----

Former EGOS stations (K-pattern and Hydrosphere)

WMO	Name	nobs	Wi	AT	AP	dP	ST	Wa	Ws	Dr	Sb	U	SS	O	Start_end	Lat	Lon
6100001	Cote d'Azur	744	X	X	X	X	X	-	X	-	-	X	-	T	0103-3103	43.40	7.80
6100002	Lion	732	X	X	X	X	X	-	X	-	-	X	-	T	0103-3103	42.10	4.70
6200001	Gascogne	744	X	X	X	X	X	-	-	-	-	X	-	O	0103-3103	45.30	-5.00
6200029	K1	701	X	X	X	-	X	X	-	-	-	X	-	O	0103-3103	48.70	-12.50
6200081	K2	741	X	X	X	X	X	X	-	-	-	X	-	O	0103-3103	51.00	-13.20
6200090	M1	-	-	-	-	-	-	-	-	-	-	-	-	-	-	53.10	-11.20
6200091	M2	735	X	X	X	-	X	X	-	-	-	X	-	O	0103-3103	53.50	-5.40
6200092	M3	734	X	X	X	-	X	X	-	-	-	X	-	O	0103-3103	51.20	-10.50
6200093	M4	725	X	X	X	-	X	X	-	-	-	-	-	O	0103-3103	54.70	-9.10
6200094	M5	733	X	X	X	-	X	X	-	-	-	X	-	O	0103-3103	51.70	-6.70
6200095	M6	32	S	S	S	S	S	S	S	S	S	-	-	-	0303-2603	53.10	-15.90
6200105	K4	-	-	-	-	-	-	-	-	-	-	-	-	-	-	55.80	-11.40
6200108	K3	-	-	-	-	-	-	-	-	-	-	-	-	-	-	53.50	-19.50
6200163	Brittany	744	X	X	X	X	X	X	X	-	-	X	-	O	0103-3103	47.50	-8.40
6400045	K5	741	-	X	X	X	X	X	-	-	-	X	-	O	0103-3103	59.10	-11.70
6400046	K7	739	X	-	X	-	-	X	-	-	-	-	-	O	0103-3103	60.70	-5.20

Comments:

- EUMETNET moored buoys are presented in bold characters.

Former EGOS moored buoys (Spanish SeaWatch and WaveScan)

WMO	Name	nobs	Wi	AT	AP	dP	ST	Wa	Ws	Dr	Sb	U	SS	O	Start_end	Lat	Lon
1300130	Gran Canaria	735	X	X	X	-	-	X	X	-	-	-	-	O	0103-3103	28.18	-15.82
1300131	Tenerife Sur	-	-	-	-	-	-	-	-	-	-	-	-	-	-	28.00	-16.58
6100196	C. Begur	-	-	-	-	-	-	-	-	-	-	-	-	-	-	41.92	3.65
6100197	Mahon	734	X	X	X	-	-	X	X	-	-	-	-	O	0103-3103	39.72	4.42
6100198	C. de Gata	511	X	X	X	-	X	X	X	-	-	-	X	O	1003-3103	36.57	-2.33
6100280	Tarragona	680	X	X	X	-	X	X	X	-	-	-	X	O	0203-3103	40.77	1.47
6100281	Valencia	166	X	X	X	-	X	X	X	-	-	-	X	O	1203-3103	39.47	-0.27
6100417	C. de Palos	510	X	X	X	-	X	X	X	-	-	-	X	O	1003-3103	37.65	-0.32
6100430	Dragonera	736	X	X	X	-	X	X	X	-	-	-	-	O	0103-3103	39.56	2.11
6200024	Bilbao-Visc.	734	X	X	X	-	X	X	X	-	-	-	X	O	0103-3103	43.63	-3.03
6200025	C. de Penas	707	X	X	X	-	X	X	X	-	-	-	X	O	0103-3103	43.73	-6.17
6200082	E. de Bares	728	X	X	X	-	X	X	X	-	-	-	X	O	0103-3103	44.13	-7.69
6200083	Villano-Sis.	724	X	X	X	-	X	X	X	-	-	-	X	O	0103-3103	43.48	-9.22
6200084	C. Silleiro	735	X	X	X	-	X	X	X	-	-	-	X	O	0103-3103	42.12	-9.43
6200085	G. de Cadiz	371	X	X	X	-	X	X	X	-	-	-	X	O	1603-3103	36.48	-6.97
6201030	Santander	-	-	-	-	-	-	-	-	-	-	-	-	-	-	43.84	-3.77

Comments:

- The EUMETNET buoy is presented in bold characters.

E-SURFMAR DB Monthly Report March 2015

Operating POSEIDON moored buoys (Greece)

WMO	Name	nobs	Wi	AT	AP	dP	ST	Wa	Ws	Dr	Sb	U	SS	O	Start_end	Lat	Lon
6101000			-	-	-	-	-	-	-	-	-	-	-			39.10	24.50
6101001		221	X	X	X	-	-	X	-	-	-	-	-	O	0103-3103	37.60	23.60
6101002			-	-	-	-	-	-	-	-	-	-	-			37.00	22.10
6101003		240	X	-	X	-	-	X	-	-	-	-	-	O	0103-3103	40.00	24.70
6101004			-	-	-	-	-	-	-	-	-	-	-			39.10	25.80
6101005			-	-	-	-	-	-	-	-	-	-	-			37.50	25.50
6101006			-	-	-	-	-	-	-	-	-	-	-			36.30	25.50
6101007		245	X	X	X	-	-	X	-	-	-	-	-	O	0103-3103	35.80	24.90
6101008		92	X	X	X	-	-	X	-	-	-	-	-	O	1703-3103	36.80	21.60
6101009			-	-	-	-	-	-	-	-	-	-	-			38.00	20.60

Other European moored buoys (operated by 3rd parties)

WMO	Name	nobs	Wi	AT	AP	dP	ST	Wa	Ws	Dr	Sb	U	SS	O	Start_end	Lat	Lon
1200050	Cycofos		-	-	-	-	-	-	-	-	-	-	-			33.60	31.90
6100010	Italia-1		-	-	-	-	-	-	-	-	-	-	-			43.80	9.10
6200027	Jersey	249	X	-	X	X	-	X	-	-	-	-	-	O	0103-3103	49.08	-22.20
6200030	L4		-	-	-	-	-	-	-	-	-	-	-			50.25	-4.22
6200050	E1		-	-	-	-	-	-	-	-	-	-	-			50.04	-4.37
6200086	NSB II	6	-	X	X	S	X	-	-	-	-	X	-	O	0103-3003	55.00	6.40
6200087	NSB III	18	S	S	S	S	S	-	-	-	-	S	-		1203-1303	54.70	6.80
6200191	Porto	387	S	S	S	-	-	S	-	-	-	-	-		0103-1703	41.15	-9.57
6200192	Peniche		-	-	-	-	-	-	-	-	-	-	-			39.50	-9.65
6200303	Turbo Bank	744	X	X	X	X	X	X	-	-	-	X	-	O	0103-3103	51.60	-5.10
6200442	PAP	756	X	-	-	-	-	-	-	-	-	-	-	O	0103-3103	49.00	-16.40
6600021	Arkona Becken	617	X	X	-	-	X	X	-	-	-	-	-	O	0103-3103	54.90	13.90
6600022	Oder Bank	228	S	S	-	-	S	-	-	-	-	-	-		1203-2403	54.10	14.20
6600024	Darsser Schwelle	679	X	X	-	-	X	X	-	-	-	-	-	O	0103-3103	54.70	12.70

Other offshore moored buoys inside the EUMETNET area

WMO	Name	nobs	Wi	AT	AP	dP	ST	Wa	Ws	Dr	Sb	U	SS	O	Start_end	Lat	Lon
1300001		532	X	X	X	-	X	-	-	-	-	X	X	L	0103-3103	11.47	-23.00
1300008		457	X	X	X	-	X	-	-	-	-	X	-	L	0103-3103	14.98	-38.02
1300308	East Atlantic		-	-	-	-	-	-	-	-	-	-	-			15.00	-38.00
4100026		380	X	X	-	-	-	-	-	-	-	X	-	L	0103-3103	11.49	-38.40
4100040	West Atlantic	775	X	X	X	X	X	X	-	-	-	X	-	O	0103-3103	14.50	-53.00
4100041	Mid. Atlantic	774	X	X	X	X	X	X	-	-	-	-	-	O	0103-3103	14.50	-46.00
4100043	Porto Rico	776	X	X	X	X	X	X	-	-	-	X	-	O	0103-3103	21.00	-65.00
4100044		772	X	X	X	X	X	X	-	-	-	X	-	O	0103-3103	21.70	-58.70
4100046		773	X	X	X	X	X	X	-	-	-	X	-	O	0103-3103	23.90	-70.90
4100047			-	-	-	-	-	-	-	-	-	-	-			27.50	-71.50
4100048		773	X	X	X	X	X	X	-	-	-	X	-	O	0103-3103	32.00	-69.60
4100049		776	X	X	X	X	X	X	-	-	-	X	-	O	0103-3103	27.50	-53.00
4100139		553	X	X	X	-	X	-	-	-	-	X	-	L	0103-3103	20.02	-37.86
4100300	Antilles	306	X	X	X	X	X	-	-	-	-	X	-	T	0903-3103	15.85	-57.47
4200059	Caraibes		-	-	-	-	-	-	-	-	-	-	-			15.00	-67.50
4400008	A Nantucket	775	X	X	X	X	X	X	-	-	-	X	-	O	0103-3103	40.50	-69.40
4400011	D Georges Bk		-	-	-	-	-	-	-	-	-	-	-			41.10	-66.60
4400018	SE Cape Cod		-	-	-	-	-	-	-	-	-	-	-			41.30	-69.30
4400024	NNE Channel	680	X	X	X	-	X	X	-	-	-	-	-	O	0103-3103	42.30	-65.90
4400137	E Scotia Sl.	736	X	X	X	X	X	X	-	-	-	-	-	O	0103-3103	42.30	-62.00
4400138	SW Gd Banks		-	-	-	-	-	-	-	-	-	-	-			44.30	-53.60
4400139	Beanquereau	740	X	X	X	X	X	X	-	-	-	-	-	O	0103-3103	44.30	-57.10
4400140	Tail of Bk		-	-	-	-	-	-	-	-	-	-	-			43.80	-51.70
4400141	Larentian F	727	X	X	X	X	X	X	-	-	-	-	-	O	0103-3103	43.00	-58.00
4400150	La Have Bk	720	X	X	X	X	X	X	-	-	-	-	-	O	0103-3103	42.50	-64.00

E-SURFMAR DB Monthly Report March 2015

Buoy-QC statistics from Meteo-France model outputs

Datend : Date of the last value received on GTS
Recvd : Total number of values received on GTS
GE : Number of Gross Errors (excluded from bias and sd computations)
bias : Mean differences between observation values and co-located model output values
Std : Standard deviation of differences

Air Pressure (hPa), drifting buoys, March 2015

Datend	WMO	Telcom	Recvd	GE	Bias	Std
20150331	1300868	11686410	741	0	0.2	0.4
20150331	1300869	11688410	741	0	0.2	0.4
20150331	1300870	61512860	444	0	0.9	0.5
20150331	1300871	61516870	351	0	0.8	0.4
20150331	1300872	61611050	371	0	0.6	0.4
20150331	2500616	61762070	741	0	0.1	0.4
20150331	2500617	61767070	741	0	-0.6	0.4
20150331	2500620	61760090	741	0	-0.2	0.5
20150331	4100969	60213780	635	0	-0.4	0.4
20150331	4100970	60213790	742	0	0.2	0.6
20150331	4100971	60215900	742	0	0.0	0.4
20150331	4100972	60217780	742	0	0.0	0.5
20150331	4400513	61475450	530	2	0.2	0.9
20150331	4400515	61476450	582	0	0.3	1.2
20150331	4400517	61477390	515	0	0.0	0.8
20150331	4400546	11160640	741	0	-0.1	0.3
20150331	4400547	60173710	741	0	0.1	1.0
20150331	4400548	11799230	741	0	0.2	0.8
20150331	4400549	60896130	742	3	0.1	1.0
20150331	4400550	60894140	742	0	0.1	1.0
20150331	4400551	60892140	742	0	0.1	1.2
20150331	4400601	60890150	741	2	-0.0	0.8
20150331	4400602	11468700	741	0	-0.0	1.0
20150302	4400603	11793230	37	36	-0.4	0.0
20150330	4400605	11473110	713	0	-0.4	0.6
20150331	4400606	11162640	740	0	-0.1	0.9
20150330	4400608	11093800	702	72	0.2	0.4
20150331	4400609	61613050	741	0	0.3	0.9
20150331	4400612	61511880	677	0	-0.2	1.1
20150331	4400613	11475040	741	0	-0.3	0.4
20150331	4400614	61661340	741	0	0.1	0.9
20150331	4400620	61667370	742	0	0.3	1.0
20150331	4400621	61519840	715	2	0.4	1.2
20150331	4400622	61668320	742	0	0.4	0.9
20150331	4400623	61669330	742	0	-0.3	0.9
20150331	4400624	11341110	724	0	-0.1	0.4
20150331	4400625	61668340	607	0	0.3	0.8
20150331	4400725	11027170	704	9	-0.1	1.1
20150331	4400739	61516840	742	0	0.3	0.9
20150331	4400740	11883820	742	0	-0.2	0.6
20150331	4400747	61610060	723	1	-0.4	1.7
20150331	4400760	61662360	742	0	-0.6	1.0
20150331	4400761	61669320	742	0	-0.5	1.0
20150331	4400762	61664310	742	0	0.2	1.0
20150331	4400763	61667330	373	0	0.0	0.6
20150331	4400764	61662330	367	0	-0.6	0.6
20150324	4400765	11685410	576	0	0.2	0.4
20150329	4400766	61663340	298	0	0.5	1.0
20150331	4400773	60211790	653	0	0.1	0.8
20150331	4400774	61477400	738	0	0.3	1.0
20150331	4400775	61476400	740	0	0.4	0.7
20150331	4400776	61474410	740	0	0.7	0.8
20150331	4400778	61475430	740	0	0.3	0.5
20150331	4400779	11885820	740	0	0.3	0.6
20150331	4400835	60218770	742	0	-0.3	0.4
20150331	4400836	60218680	742	0	-0.1	1.0
20150331	4400837	60209590	742	0	0.0	0.5
20150331	4400839	60205090	742	0	-0.1	0.3
20150331	4400846	60441290	741	0	0.5	0.3
20150331	4400847	60442280	741	0	0.3	0.7
20150331	4400848	60448280	741	0	0.0	0.7

E-SURFMAR DB Monthly Report March 2015

20150331	4400863	60211690	742	0	-0.1	0.3
20150331	4400866	11793240	741	4	-0.4	0.9
20150331	4400867	11593590	741	0	-0.3	0.9
20150331	4400868	11794230	740	0	-0.0	0.6
20150331	4400871	11790240	741	0	0.2	0.6
20150331	4400872	60202920	741	0	-0.5	0.8
20150317	4400876	60648350	394	0	0.5	0.5
20150331	4400877	60526170	742	0	-0.1	0.3
20150331	4400878	60528170	742	0	-0.0	0.5
20150331	4400880	60556880	742	0	-0.3	0.8
20150331	4400885	60218780	742	0	-0.1	0.4
20150331	4400887	60251440	742	0	-0.1	0.6
20150331	4400888	60359010	742	0	-0.1	0.4
20150331	4400889	60202320	742	0	-0.1	0.4
20150331	4400890	12000230	742	0	-0.1	0.7
20150331	4400891	12007220	742	0	-0.0	0.3
20150331	4400892	60018400	722	0	-0.4	0.8
20150331	6200513	61665360	742	0	0.1	1.0
20150331	6200514	60203700	741	0	-0.1	0.7
20150331	6200516	11475100	741	0	0.2	0.4
20150331	6200536	11599570	741	0	-0.4	0.8
20150307	6200537	11791240	147	0	0.2	0.7
20150331	6200539	60891140	742	0	-0.0	1.1
20150331	6200551	60897120	742	1	-0.1	1.1
20150331	6200552	11797240	739	0	0.2	0.7
20150331	6200553	11165650	741	0	-0.3	1.5
20150331	6200677	61663310	371	0	0.2	0.5
20150331	6200681	11168640	741	0	-0.1	0.5
20150331	6200687	11349100	740	0	-0.4	1.4
20150331	6200695	60408990	741	0	0.3	0.3
20150331	6200713	11246980	726	0	-0.2	0.6
20150331	6200714	11240980	736	0	-0.2	0.6
20150331	6200940	60203850	742	0	0.0	0.3
20150331	6200941	60207590	742	0	-0.1	0.3
20150331	6300640	60172710	741	0	-0.1	0.7
20150331	6300641	61665210	421	10	0.2	2.4
20150331	6300644	61766070	628	10	-0.9	1.8
20150331	6400517	61619060	642	1	0.6	1.1
20150331	6400518	60892150	722	0	0.0	0.8
20150331	6400519	61518850	742	0	0.2	1.1
20150331	6400520	11479040	489	43	-0.4	1.0
20150331	6400521	11470030	741	0	-0.2	1.0
20150331	6400522	61511870	735	1	0.2	0.9
20150331	6400523	61510870	742	0	0.2	1.0
20150331	6400524	61619040	742	0	-0.1	0.9
20150331	6400525	60175710	394	36	0.6	2.6
20150331	6400526	61611070	704	0	0.0	1.0
20150331	6400527	61514840	680	0	0.5	0.9
20150331	6400606	61515870	600	0	0.7	1.0
20150331	6400613	60174710	741	23	-0.7	2.2
20150331	6400614	60178700	742	3	-0.0	1.0
20150331	6400615	60173700	720	21	0.0	1.5
20150331	6400620	60899130	35	0	-0.1	0.5
20150331	6400621	61614070	35	0	-0.1	0.5
20150331	6400622	60172810	741	3	-0.2	1.4
20150331	6400623	11470040	741	14	-0.8	1.6
20150331	6400665	60171710	741	12	-0.2	1.8
20150331	6400666	60179710	741	0	0.2	0.8
20150331	6400667	61615060	594	2	-0.2	1.4
20150331	6400668	60177860	679	35	-0.6	1.9
20150331	6400669	60177710	741	1	-0.0	1.0
20150331	6400692	60172720	741	0	0.2	0.9
20150331	6500596	61511850	742	0	0.2	0.8
20150318	6500597	11595650	421	2	-0.4	1.2
20150331	6500598	11792240	741	1	0.0	0.8

Air Pressure (hPa), moored buoys, March 2015

Datend	WMO	Telcom	Recvd	GE	Bias	Std
20150331	1300130		735	0	0.6	0.7
20150331	6100001		744	0	-1.0	0.6
20150331	6100002		724	0	0.4	0.5
20150331	6100197		734	0	-0.4	0.7

E-SURFMAR DB Monthly Report March 2015

20150331	6100198	511	0	0.2	0.7
20150331	6100280	680	0	0.2	0.8
20150331	6100281	166	0	0.5	0.8
20150331	6100417	510	6	0.8	0.9
20150331	6100430	736	0	0.3	0.8
20150331	6101001	221	0	0.5	0.7
20150331	6101003	240	0	0.9	0.7
20150331	6101007	245	0	0.1	0.7
20150331	6101008	92	0	-0.0	0.8
20150331	6200001	744	0	0.2	0.5
20150331	6200024	734	0	0.3	0.7
20150331	6200025	707	0	0.4	0.7
20150331	6200027	245	0	0.0	0.5
20150331	6200029	701	0	0.2	0.5
20150331	6200081	741	0	0.2	0.7
20150331	6200082	728	0	0.4	0.7
20150331	6200083	724	0	0.5	0.6
20150331	6200084	735	0	0.4	0.6
20150331	6200085	371	0	2.3	2.4
20150313	6200087	18	0	-0.2	0.3
20150331	6200091	735	1	-0.2	0.8
20150331	6200092	734	1	0.1	0.6
20150331	6200093	725	2	0.1	1.2
20150331	6200094	733	1	-0.1	0.7
20150326	6200095	30	2	-0.7	2.4
20150331	6200163	744	0	0.1	0.5
20150317	6200191	387	0	0.1	0.4
20150331	6200303	744	0	0.2	0.6
20150331	6400045	727	0	0.1	1.0
20150331	6400046	739	1	0.2	1.3

Air Temperature (C), moored buoys, March 2015

Datend	WMO	Telcom	Recvd	GE	Bias	Std
20150331	1300130		735	0	-0.4	0.4
20150331	6100001		744	0	-0.2	0.6
20150331	6100002		731	0	-0.3	0.5
20150331	6100197		734	0	2.1	0.6
20150331	6100198		511	0	0.9	1.5
20150331	6100280		680	0	0.3	0.7
20150331	6100281		160	0	0.1	0.7
20150331	6100417		510	0	0.4	1.0
20150331	6100430		736	0	0.7	0.6
20150331	6101001		221	0	-0.1	0.6
20150331	6101007		245	0	1.1	0.8
20150331	6101008		92	0	-0.0	0.9
20150331	6200001		744	0	-0.1	0.6
20150331	6200024		734	0	0.4	0.7
20150331	6200025		707	0	-0.1	0.8
20150331	6200029		701	0	0.0	0.5
20150331	6200081		741	0	-0.2	0.6
20150331	6200082		711	0	0.0	0.5
20150331	6200083		724	0	0.1	0.5
20150331	6200084		735	0	0.1	0.7
20150331	6200085		371	0	-0.1	0.8
20150313	6200087		18	0	0.1	0.9
20150331	6200091		735	0	0.1	0.6
20150331	6200092		734	0	-0.2	0.6
20150331	6200093		725	0	-0.2	0.7
20150331	6200094		733	0	-0.0	0.5
20150331	6200163		743	0	0.1	0.5
20150317	6200191		387	0	-0.1	0.6
20150331	6200303		743	0	-0.2	0.8
20150331	6400045		741	0	-0.7	0.9
20150331	6600021		614	0	0.2	0.5
20150324	6600022		228	0	0.5	0.7
20150331	6600024		679	0	0.4	0.5

Wind direction (deg.), moored buoys, March 2015

Datend	WMO	Telcom	Recvd	GE	Bias	Std
20150331	1300130		733	8	12	16
20150331	6100001		731	66	-2	28

E-SURFMAR DB Monthly Report March 2015

20150331	6100002	730	9	-2	22
20150331	6100197	730	27	-16	22
20150331	6100198	484	34	6	25
20150331	6100280	672	28	-9	27
20150331	6100281	157	12	5	39
20150331	6100417	485	18	-6	25
20150331	6100430	735	38	-8	33
20150331	6101001	220	15	1	32
20150331	6101003	240	46	-23	49
20150331	6101007	244	16	-10	27
20150331	6101008	92	6	-3	30
20150331	6200001	743	11	-6	16
20150331	6200024	689	29	-3	29
20150331	6200025	683	37	12	25
20150331	6200027	197	9	1	31
20150331	6200029	701	1	3	13
20150331	6200081	741	0	-3	13
20150331	6200082	708	10	-1	19
20150331	6200083	717	27	-3	18
20150331	6200084	730	22	0	22
20150331	6200085	362	12	-4	25
20150313	6200087	18	0	-46	5
20150331	6200091	735	3	1	18
20150331	6200092	734	1	3	17
20150331	6200093	725	1	7	13
20150331	6200094	733	5	-1	15
20150331	6200163	744	3	1	14
20150317	6200191	385	5	-2	18
20150331	6200303	744	11	-1	20
20150331	6200442	740	0	-0	11
20150331	6400046	739	2	4	19
20150331	6600021	616	2	-3	19
20150324	6600022	227	48	31	59
20150331	6600024	504	28	0	19

Wind speed rate, moored buoys, March 2015

Datend	WMO	Telcom	Recvd	GE	Rate	Err
20150331	1300130		733	0	1.0	2.1
20150331	6100001		731	1	1.3	2.4
20150331	6100002		730	0	1.1	2.1
20150331	6100197		730	0	1.1	1.8
20150331	6100198		484	0	1.0	2.1
20150331	6100280		672	0	1.2	2.3
20150331	6100281		157	0	1.0	1.6
20150331	6100417		485	0	0.9	1.8
20150331	6100430		735	0	1.0	2.4
20150331	6101001		220	0	1.2	2.0
20150331	6101003		240	6	0.7	3.3
20150331	6101007		244	0	1.1	2.0
20150331	6101008		92	0	0.9	2.4
20150331	6200001		743	0	1.0	1.3
20150331	6200024		689	0	1.0	1.5
20150331	6200025		683	0	0.7	2.5
20150331	6200027		197	1	0.9	1.4
20150331	6200029		701	0	1.0	1.3
20150331	6200081		741	0	0.9	1.2
20150331	6200082		708	0	0.8	1.3
20150331	6200083		717	0	0.9	1.8
20150331	6200084		730	0	1.2	1.9
20150331	6200085		362	0	1.1	1.7
20150313	6200087		18	0	1.1	1.1
20150331	6200091		735	0	1.0	1.7
20150331	6200092		734	0	1.0	1.7
20150331	6200093		725	0	0.9	1.7
20150331	6200094		733	0	0.9	1.6
20150331	6200163		744	0	1.0	1.2
20150317	6200191		385	0	0.0	0.0
20150331	6200303		744	0	1.0	1.7
20150331	6200442		740	0	1.0	1.3
20150331	6400046		739	4	1.1	1.9
20150331	6600021		616	1	1.1	1.4
20150324	6600022		227	18	1.2	1.4
20150331	6600024		504	0	1.1	2.5

Comments on QC statistics :

Air pressure

1. Metocean buoys WMO **4400603**, **4400608**, **6300641** and **6400525** reported wrong pressure data before the transmission was stopped for this parameter.
2. Metocean buoys WMO **6400520** also reported wrong pressure data before the transmission was stopped for this parameter but the GTS transmission was released back at the beginning of march.
3. GTS transmission was stopped for Metocean buoys WMO **6400615** during a short period because they reported dubious pressure values.
4. Metocean buoys WMO **6300644**, **6400613**, **6400623**, **6400665** and **6400668** temporarily reported wrong pressure data in January for unknown reasons but not enough to have their GTS transmission stopped.
5. EUCOS moored buoy **M6** transmitted only a few values during this month.
6. Spanish moored buoy **6200085** reported dubious pressure values during the month of March.

Air temperature

7. Spanish moored buoy **6100197** presents an increasing bias for air temperature (+2.1°C in April)

Wind

8. Moored buoy Porto (**6200191**) reported abnormal weak winds before this parameter was stopped from the GTS transmission on the 17th of March.
9. Moored buoy **NSB III (6200087)** reported only values on 12 and 13 march.
10. Moored buoy **Oder Bank (660022)** reported wrong values between 12 and 24 march before stopping.

Monthly QC statistics and other data quality control tools are available on line at :
<http://www.meteo.shom.fr/qctools/>

The working area of the E-SURFMAR website is open at <http://esurfmar.meteo.fr/wikisurf-wa/> . Ask the E-SURFMAR Programme Manager Pierre.Blouch@meteo.fr for the password in case you forgot it. Graphs of system performances may be displayed/downloaded at http://esurfmar.meteo.fr/doc/r/surfmar/others/e-surfmar_monitoring.pdf.