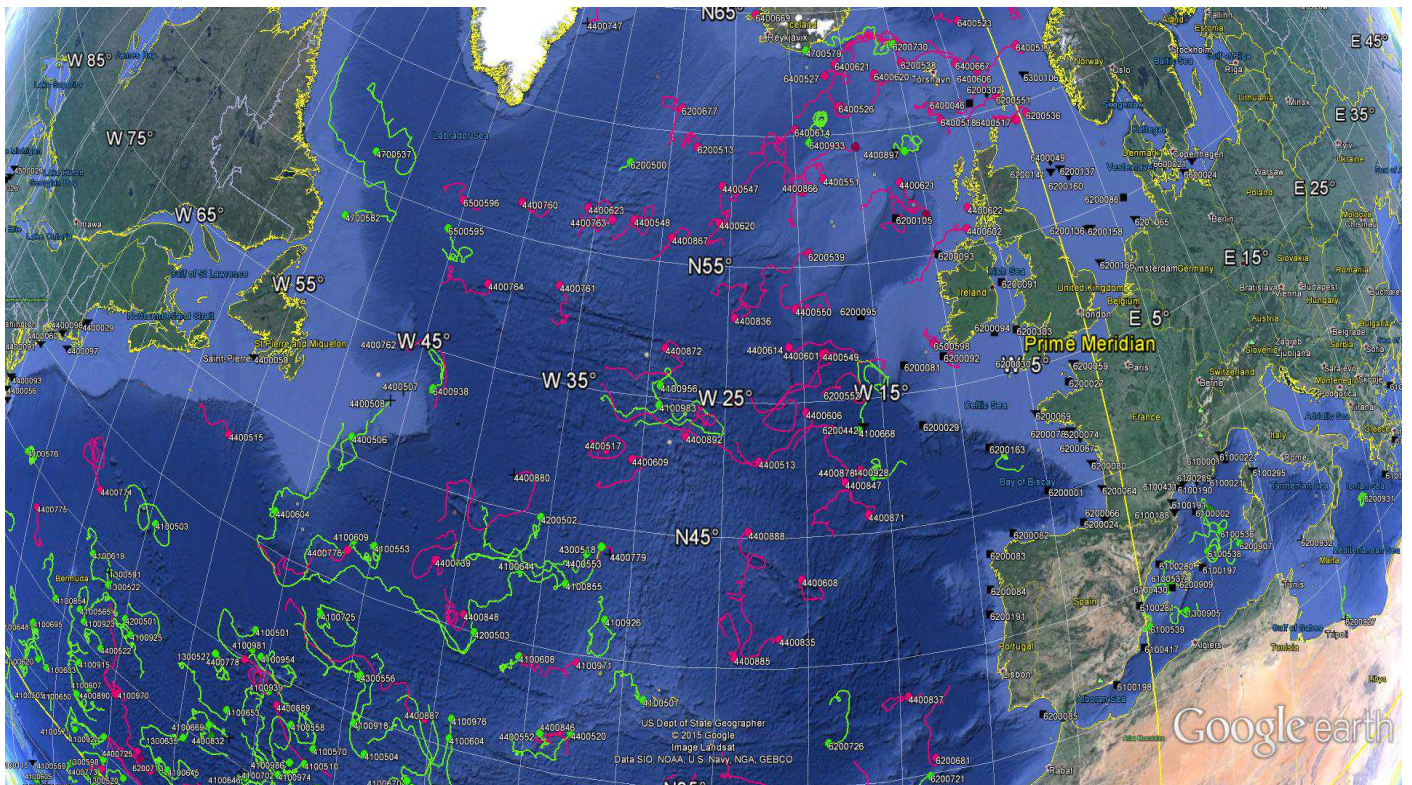


DATA BUOY MONTHLY REPORT

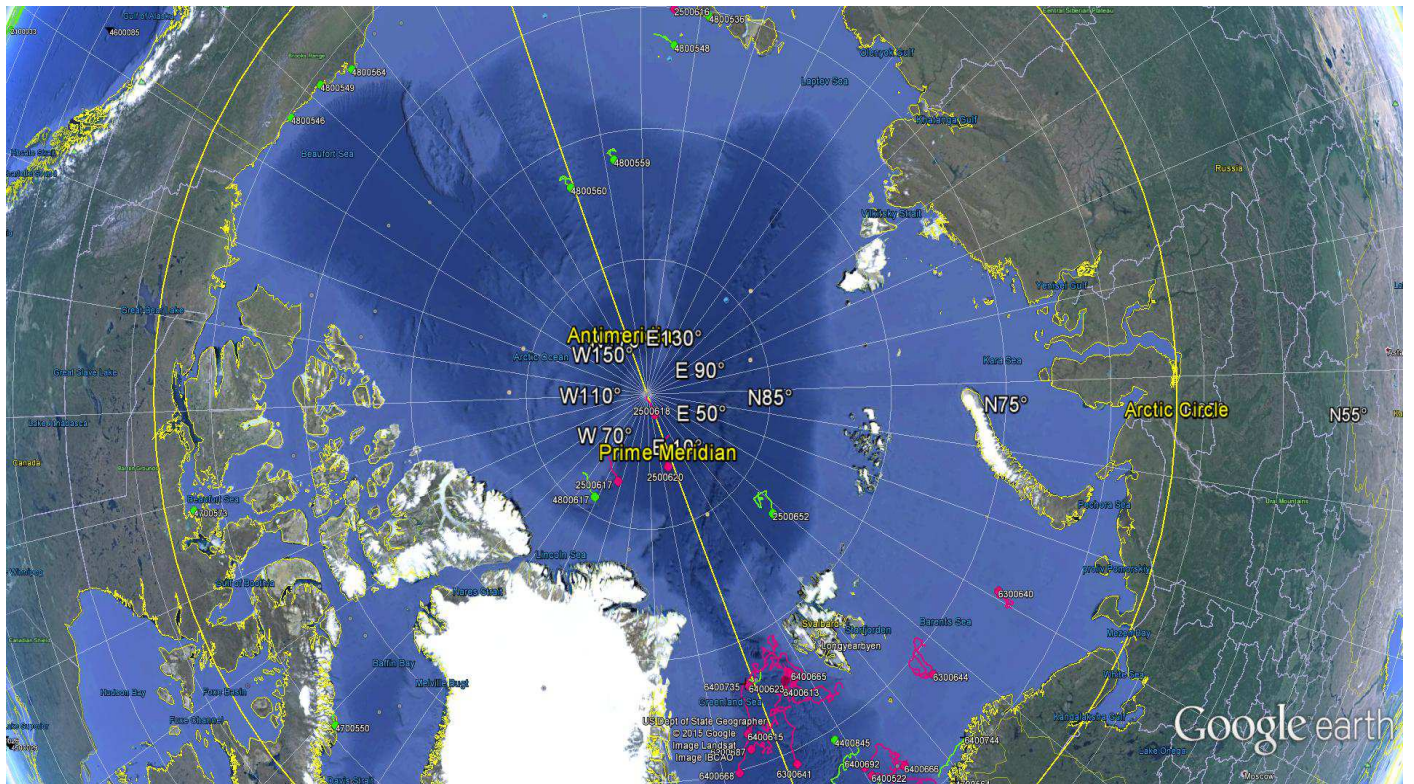
April 2015



*April 2015 : Operating data buoys in the North Atlantic
Drifting buoy trajectories : E-SURFMAR (red), others (yellow)
Moored buoy positions (black)*

*Most recent trajectories may be seen at:
http://www.meteo.shom.fr/cartographie/data/kml/MeteoFrance_buoys_map_15.kmz*

E-SURFMAR DB Monthly Report April 2015



April 2015
Drifting buoy trajectories in Arctic Ocean and adjacent seas : E-SURFMAR (red), others (yellow)

DRIFTING BUOYS

Network status

By the end of March, **128 Drifting buoys**, reporting air pressure onto the GTS, were in operation in the frame of E-SURFMAR. Out of these, 93 were E-SURFMAR funded Iridium SVP-Bs, including 6 in the Arctic, 4 in AtlantOS activities and 9 HRSST-2 buoys. The remaining buoys were: 35 drifters owned by NOAA and upgraded with barometers by E-SURFMAR.

Information about the availability of buoys for future deployments may be get from the E-SURFMAR wikisite (working area) at: http://esurfmar.meteo.fr/wikisurf-wa/index.php/Availability_of_drifting_buoys

Besides E-SURFMAR buoys, 65 drifting buoys were reporting at least air pressure observations from the EUMETNET area of interest. Out of these, 3 were reporting Sea Surface Salinity.

Drifting buoys - New deployments

WMO	Telcom	Typ	Ow	Dep_Date	DepLat	DepLon	From	Comment
1500681	61661310	MSB	EU	20150418	-12.0	-0.2	Brest	MSC Rita
1500682	61663300	MSB	EU	20150417	- 9.0	-2.6	Brest	MSC Rita
1500683	61663370	MSB	EU	20150416	- 3.0	-7.2	Brest	MSC Rita
1500684	62328350	MSB	EU	20150417	- 6.0	-4.9	Brest	MSC Rita
2500618	11020180	MSB	EU	20150421	90.0	-27.1	Longyearbyen	Helicopter deployment

Operating drifting buoys in North Atlantic by the end of the month

WMO	Telcom	Typ	Ow	nobs	Wi	AT	AP	dP	ST	Wa	Ws	Dr	Sb	U	SS	O	Start_end	Lat	Lon	Age
1300868	11686410	MSB	EU	412	-	-	X	X	X	-	-	X	-	-	-	T	0104-3004	34.19	-16.64	161
1300869	11688410	MSB	EU	720	-	-	X	X	X	-	-	X	-	-	-	T	0104-3004	25.21	-30.58	159
1300870	61512860	MSB	EU	720	-	-	X	X	X	-	-	X	-	-	-	T	0104-3004	33.01	-16.35	49
1300871	61516870	MSB	EU	653	-	-	X	X	X	-	-	X	-	-	-	T	0104-3004	24.37	-25.72	47
1300872	61611050	MSB	EU	720	-	-	X	X	X	-	-	X	-	-	-	T	0104-3004	25.50	-19.46	48
1500681	61661310	MSB	EU	303	-	-	X	X	X	-	-	X	-	-	-	T	1804-3004	-12.16	-0.39	13
1500682	61663300	MSB	EU	317	-	-	X	X	X	-	-	X	-	-	-	T	1704-3004	-09.30	-2.32	14
1500683	61663370	MSB	EU	340	-	-	X	X	X	-	-	X	-	-	-	T	1604-3004	-04.88	-9.92	15
1500684	62328350	MSB	EU	327	-	-	X	X	X	-	-	X	-	-	-	T	1704-3004	-07.09	-5.62	14
2500616	61762070	MSB	EU	720	-	-	X	X	X	-	-	X	-	-	-	T	0104-3004	75.09	154.42	268
2500617	61767070	MSB	EU	720	-	-	X	X	X	-	-	X	-	-	-	T	0104-3004	86.57	-42.28	222
2500618	11020180	MSB	EU	221	-	-	X	X	X	-	-	X	-	-	-	T	2104-3004	89.19	0.48	10
2500620	61760090	MSB	EU	720	-	-	X	X	X	-	-	X	-	-	-	T	0104-3004	87.21	-4.21	216
4100969	60213780	PSB	UP	720	-	-	X	X	X	-	-	X	-	-	-	T	0104-3004	21.74	-49.18	631
4100970	60213790	PSB	UP	720	-	-	X	X	X	-	-	X	-	-	-	T	0104-3004	29.14	-59.52	630
4100971	60215900	PSB	UP	720	-	-	X	X	X	-	-	X	-	-	-	T	0104-3004	39.71	-32.56	630
4100972	60217780	PSB	UP	719	-	-	X	X	X	-	-	X	-	-	-	T	0104-3004	27.84	-50.67	630
4400513	61475450	DSB	UP	719	-	-	X	X	X	-	-	X	-	-	-	T	0104-3004	47.87	-22.87	53
4400515	61476450	DSB	UP	720	-	-	X	X	X	-	-	X	-	-	-	T	0104-3004	43.37	-56.07	55
4400517	61477390	DSB	UP	720	-	-	X	X	X	-	-	X	-	-	-	T	0104-3004	47.89	-32.15	52
4400546	11160640	MSB	EU	720	-	-	X	X	X	-	-	X	-	-	-	T	0104-3004	26.64	-33.37	772
4400547	60173710	MSB	EU	720	-	-	X	X	X	-	-	X	-	-	-	T	0104-3004	58.04	-25.72	263
4400548	11799230	MSB	E2	720	-	-	X	X	X	-	-	X	-	-	-	T	0104-3004	56.46	-32.17	263
4400549	60896130	MSB	EU	720	-	-	X	X	X	-	-	X	-	-	-	T	0104-3004	51.77	-18.70	236
4400550	60894140	MSB	EU	720	-	-	X	X	X	-	-	X	-	-	-	T	0104-3004	53.47	-20.42	236
4400551	60892140	MSB	EU	720	-	-	X	X	X	-	-	X	-	-	-	T	0104-3004	58.31	-17.84	236
4400601	60890150	MSB	EU	720	-	-	X	X	X	-	-	X	-	-	-	T	0104-3004	51.81	-18.53	235
4400602	11468700	MSB	UP	720	-	-	X	X	X	-	-	X	-	-	-	T	0104-3004	55.74	-7.21	770
4400606	11162640	MSB	EU	720	-	-	X	X	X	-	-	X	-	-	-	T	0104-3004	49.66	-19.93	204
4400608	11093800	MSB	E2	720	-	-	X	X	X	-	-	X	-	-	-	T	0104-3004	43.45	-20.34	203
4400609	61613050	MSB	EU	720	-	-	X	X	X	-	-	X	-	-	-	T	0104-3004	47.67	-30.52	85
4400612	61511880	MSB	EU	683	-	-	X	X	X	-	-	X	-	-	-	T	0104-3004	56.55	-10.16	495
4400613	11475040	MSB	EU	720	-	-	X	X	X	-	-	X	-	-	-	T	0104-3004	31.72	-18.49	786
4400614	61661340	MSB	EU	716	-	-	X	X	X	-	-	X	-	-	-	T	0104-3004	52.06	-20.93	366

E-SURFMAR DB Monthly Report April 2015

4400620	61667370	MSB	EU	720	-	-	X	X	X	-	-	X	-	-	-	T	0104-3004	56.64	-25.87	365
4400621	61519840	MSB	EU	705	-	-	X	X	X	-	-	X	-	-	-	T	0104-3004	57.92	-11.80	446
4400622	61668320	MSB	EU	508	-	-	X	X	S	-	-	X	-	-	-	T	0104-3004	56.53	-6.76	364
4400623	61669330	MSB	EU	720	-	-	X	X	X	-	-	X	-	-	-	T	0104-3004	56.65	-35.69	84
4400624	11341110	YSB	EU	702	-	-	X	X	X	-	-	X	-	-	-	T	0104-3004	24.27	-21.67	871
4400625	61668340	MSB	EU	594	-	-	X	X	X	-	-	X	-	-	-	T	0104-3004	59.48	-14.96	364
4400725	11027170	MSB	EU	720	-	-	X	X	X	-	-	X	-	-	-	T	0104-3004	27.03	-57.55	1042
4400739	61516840	MSB	EU	720	-	-	X	X	X	-	-	X	-	-	-	T	0104-3004	42.33	-41.22	332
4400740	11883820	PSB	UP	720	-	-	X	X	X	-	-	X	-	-	-	T	0104-3004	27.70	-52.13	1027
4400760	61662360	MSB	EU	720	-	-	X	X	X	-	-	X	-	-	-	T	0104-3004	56.30	-40.71	84
4400761	61669320	MSB	EU	720	-	-	X	X	X	-	-	X	-	-	-	T	0104-3004	53.56	-36.70	84
4400762	61664310	MSB	EU	720	-	-	X	X	X	-	-	X	-	-	-	T	0104-3004	49.85	-46.47	83
4400763	61667330	MSB	EU	720	-	-	X	X	X	-	-	X	-	-	-	T	0104-3004	56.34	-33.80	47
4400764	61662330	MSB	EU	720	-	-	X	X	X	-	-	X	-	-	-	T	0104-3004	52.98	-41.66	46
4400773	60211790	PSB	UP	676	-	-	X	X	X	-	-	X	-	-	-	T	0104-3004	24.10	-60.21	656
4400774	61477400	DSB	UP	719	-	-	X	X	X	-	-	X	-	-	-	T	0104-3004	37.31	-64.17	166
4400775	61476400	DSB	UP	720	-	-	X	X	X	-	-	X	-	-	-	T	0104-3004	33.51	-69.24	166
4400776	61474410	DSB	UP	718	-	-	X	X	X	-	-	X	-	-	-	T	0104-3004	41.46	-46.51	165
4400778	61475430	DSB	UP	719	-	-	X	X	X	-	-	X	-	-	-	T	0104-3004	35.02	-51.35	164
4400835	60218770	PSB	UP	720	-	-	X	X	X	-	-	X	-	-	-	T	0104-3004	41.19	-21.61	423
4400836	60218680	PSB	UP	719	-	-	X	X	X	-	-	X	-	-	-	T	0104-3004	53.12	-24.55	423
4400837	60209490	PSB	UP	719	-	-	X	X	X	-	-	X	-	-	-	T	0104-3004	38.47	-14.57	423
4400839	60205090	PSB	UP	720	-	-	X	X	X	-	-	X	-	-	-	T	0104-3004	34.11	-21.89	423
4400846	60441290	DSB	UP	716	-	-	X	X	X	-	-	X	-	-	-	T	0104-3004	36.87	-33.06	460
4400847	60442280	DSB	UP	720	-	-	X	X	X	-	-	X	-	-	-	T	0104-3004	46.99	-17.65	460
4400848	60448280	DSB	UP	720	-	-	X	X	X	-	-	X	-	-	-	T	0104-3004	40.60	-39.08	459
4400863	60211690	PSB	UP	720	-	-	X	X	X	-	-	X	-	-	-	T	0104-3004	30.23	-38.74	654
4400866	11793240	MSB	E2	720	-	-	X	X	X	-	-	X	-	-	-	T	0104-3004	57.85	-19.52	314
4400867	11593590	MSB	EU	720	-	-	X	X	X	-	-	X	-	-	-	T	0104-3004	55.95	-29.25	312
4400868	11794230	MSB	E2	719	-	-	X	X	X	-	-	X	-	-	-	T	0104-3004	28.87	-46.41	723
4400871	11790240	MSB	E2	720	-	-	X	X	X	-	-	X	-	-	-	T	0104-3004	45.71	-16.34	308
4400872	60202920	MSB	EU	720	-	-	X	X	X	-	-	X	-	-	-	T	0104-3004	51.86	-29.05	308
4400877	60526170	PSB	UP	720	-	-	X	X	X	-	-	X	-	-	-	T	0104-3004	34.25	-24.27	451
4400878	60528170	PSB	UP	720	-	-	X	X	X	-	-	X	-	-	-	T	0104-3004	47.40	-16.69	451
4400880	60656880	PSB	UP	620	-	-	X	X	X	-	-	X	-	-	-	T	0104-3004	46.31	-37.47	452
4400885	60218780	PSB	UP	720	-	-	X	X	X	-	-	X	-	-	-	T	0104-3004	40.46	-24.06	336
4400887	60251440	PSB	UP	719	-	-	X	X	X	-	-	X	-	-	-	T	0104-3004	35.94	-40.38	338
4400888	60359010	PSB	UP	720	-	-	X	X	X	-	-	X	-	-	-	T	0104-3004	45.26	-23.43	336
4400889	60202320	PSB	UP	720	-	-	X	X	X	-	-	X	-	-	-	T	0104-3004	33.83	-48.90	337
4400890	12000230	PSB	UP	719	-	-	X	X	X	-	-	X	-	-	-	T	0104-3004	29.00	-59.74	336
4400891	12007220	PSB	UP	720	-	-	X	X	X	-	-	X	-	-	-	T	0104-3004	28.03	-33.24	334
4400892	60018400	PSB	UP	720	-	-	X	X	X	-	-	X	-	-	-	T	0104-3004	48.69	-27.37	335
6200513	61665360	MSB	EU	720	-	-	X	X	X	-	-	X	-	-	-	T	0104-3004	59.49	-27.85	85
6200514	60203700	MSB	E2	720	-	-	X	X	X	-	-	X	-	-	-	T	0104-3004	68.00	-0.36	798
6200516	11475100	MSB	EU	720	-	-	X	X	X	-	-	X	-	-	-	T	0104-3004	25.66	-24.35	724
6200536	11599570	MSB	EU	720	-	-	X	X	X	-	-	X	-	-	-	T	0104-3004	59.52	0.57	326
6200538	11460700	MSB	UP	720	-	-	X	X	X	-	-	X	-	-	-	T	0104-3004	62.61	-9.58	325
6200539	60891140	MSB	EU	720	-	-	X	X	X	-	-	X	-	-	-	T	0104-3004	55.52	-19.34	238
6200551	60897120	MSB	EU	720	-	-	X	X	S	-	-	X	-	-	-	T	0104-3004	60.48	-1.63	238
6200552	11797240	MSB	E2	720	-	-	X	X	X	-	-	X	-	-	-	T	0104-3004	50.23	-16.04	203
6200553	11165650	MSB	EU	720	-	-	X	X	X	-	-	X	-	-	-	T	0104-3004	77.77	5.79	768
6200677	61663310	MSB	EU	720	-	-	X	X	X	-	-	X	-	-	-	T	0104-3004	60.95	-29.44	47
6200681	11168640	MSB	EU	721	-	-	X	X	X	-	-	X	-	-	-	T	0104-3004	35.73	-13.18	896
6200687	11349100	YSB	EU	720	-	-	X	X	X	-	-	X	-	-	-	T	0104-3004	75.75	-4.41	875
6200695	60408990	MSB	E2	720	-	-	X	X	X	-	-	X	-	-	-	T	0104-3004	25.76	-33.73	724
6200713	11246980	YSB	EU	705	-	-	X	X	X	-	-	X	-	-	-	T	0104-3004	26.53	-56.47	870
6200714	11240980	YSB	EU	714	-	-	X	X	X	-	-	X	-	-	-	T	0104-3004	26.76	-57.27	867
6200940	60203850	PSB	UP	719	-	-	X	X	X	-	-	X	-	-	-	T	0104-3004	34.27	-27.81	333
6200941	61516840	PSB	UP	720	-	-	X	X	X	-	-	X	-	-	-	T	0104-3004	34.39	-31.03	333
6300640	60172710	MSB	EU	720	-	-	X	X	X	-	-	X	-	-	-	T	0104-3004	73.36	41.03	625
6300644	61766070	MSB	EU	720	-	-	X	X	X	-	-	X	-	-	-	T	0104-3004	73.84	26.26	211
6400517	61619060	MSB	EU	584	-	-	X	X	X	-	-	X	-	-	-	T	0104-3004	59.37	-0.54	170
6400518	60892150	MSB	EU	712	-	-	X	X	X	-	-	X	-	-	-	T	0104-3004	60.07	-7.24	169
6400519	61518850	MSB	EU	720	-	-	X	X	X	-	-	X	-	-	-	T	0104-3004	62.26	2.14	103
6400520	11479040	MSB	EU	720	-	-	X	X	X	-	-	X	-	-	-	T	0104-3004	70.75	2.45	720
6400521	11470030	MSB	EU	720	-	-	X	X	X	-	-	X	-	-	-	T	0104-3004	71.39	1.51	718
6400522	61511870	MSB	EU	718	-	-	X	X	X	-	-	X	-	-	-	T	0104-3004	72.35	10.67	251
6400523	61510870	MSB	EU	719	-	-	X	X	X	-	-	X	-	-	-	T	0104-3004	63.89	-2.79	173
6400524	61619040	MSB	EU	720	-	-	X	X	X	-	-	X	-	-	-	T	0104-3004	65.98	5.88	173
6400525	60175710	MSB	EU	720	-	-	X	X	X	-	-	X	-	-	-	T	0104-3004	69.95	-5.35	622
6400526	61611070	MSB	EU	720	-	-	X	X	X	-	-	X	-	-	-	T	0104-3004	61.12	-15.95	171
6400527	61514840	MSB	EU	691	-	-	X	X	X	-	-	X	-	-	-	T	0104-3004	62.37	-16.88	170
6400606	61515870	MSB	EU	597	-	-	X	X	X	-	-	X	-	-	-	T	0104-3004	61.74	-2.57	99
6400613	60174710	MSB	EU	720	-	-	X	X	X	-	-	X	-	-	-	T	0104-3004	77.50	4.76	607
6400614	60178700	MSB	EU	720	-	-	X	X	X	-	-	X	-	-	-	T	0104-3004	60.26	-19.91	603
6400615	60173700	MSB	EU	720	-	-	X	X	X	-	-	X	-	-	-	T	0104-3004	76.40	-4.20	538

E-SURFMAR DB Monthly Report April 2015

6400620	60899130	MSB	EU	720	-	-	X	X	X	-	-	X	-	-	-	T	0104-3004	62.28	-12.31	34
6400621	61614070	MSB	EU	716	-	-	X	X	X	-	-	X	-	-	-	T	0104-3004	62.84	-15.81	33
6400622	60172810	MSB	EU	720	-	-	X	X	X	-	-	X	-	-	-	T	0104-3004	71.90	8.27	623
6400623	11470040	MSB	EU	720	-	-	X	X	X	-	-	X	-	-	-	T	0104-3004	78.23	-1.15	719
6400665	60171710	MSB	EU	720	-	-	X	X	X	-	-	X	-	-	-	T	0104-3004	77.91	7.46	519
6400666	60179710	MSB	EU	720	-	-	X	X	X	-	-	X	-	-	-	T	0104-3004	71.79	15.02	519
6400667	61615060	MSB	EU	604	-	-	X	X	X	-	-	X	-	-	-	T	0104-3004	62.18	-4.43	491
6400668	60177860	MSB	EU	720	-	-	X	X	X	-	-	X	-	-	-	T	0104-3004	74.93	-7.31	495
6400669	60177710	MSB	EU	720	-	-	X	X	X	-	-	X	-	-	-	T	0104-3004	64.97	-23.09	491
6400692	60172720	MSB	EU	720	-	-	X	X	X	-	-	X	-	-	-	T	0104-3004	72.83	10.41	434
6500596	61511850	MSB	EU	720	-	-	X	X	X	-	-	X	-	-	-	T	0104-3004	55.73	-45.15	316
6500598	11792240	MSB	E2	720	-	-	X	X	X	-	-	X	-	-	-	T	0104-3004	51.72	-11.12	310

----- Drifting buoys which ceased to be operational

WMO	Telcom	Typ	Ow	End_Date	Lat	Lon	Age	Cause
4400747	61610060	MSB	EU	20150413	63.8	-39.3	475	Unknown
4400779	61473400	DSB	UP	20150408	44.0	-31.3	142	Unknown

----- Non-operating drifting buoys reporting GTS data

WMO	Telcom	Typ	Ow	nobs	Wi	AT	AP	dP	ST	Wa	Ws	Dr	Sb	U	SS	O	Start_end	Lat	Lon	Age
2500624	60247420	MSB	EU	720	-	-	-	-	X	-	-	X	-	-	-	T	0104-3004	65.49	-9.51	608
2500652	60176700	MSB	EU	720	-	-	-	-	X	-	-	X	-	-	-	T	0104-3004	83.25	27.40	596
4400604	11794240	MSB	E2	720	-	-	-	-	X	-	-	X	-	-	-	T	0104-3004	41.59	-51.52	205
6300641	61665210	MSB	EU	720	-	-	S	S	X	-	-	X	-	-	-	T	0104-3004	74.44	1.78	212
6500595	11595570	MSB	EU	720	-	-	-	-	X	-	-	X	-	-	-	T	0104-3004	54.53	-45.61	318

----- Other operating drifting buoys inside the EUMETNET area by the end of the month

WMO	Telcom	Typ	Ow	nobs	Wi	AT	AP	dP	ST	Wa	Ws	Dr	Sb	U	SS	O	Start_end	Lat	Lon
1300515	114951	AOML		671	-	-	X	-	X	-	-	X	-	-	-	L	0104-3004	20.66	-37.12
1300517	114943	AOML		686	-	-	X	-	X	-	-	X	-	-	-	L	0104-3004	15.35	-28.86
1300519	127004	AOML		665	-	-	X	X	X	-	-	X	-	-	-	L	0104-3004	16.80	-32.27
1300523	114877	AOML		635	-	-	X	-	X	-	-	X	-	-	-	L	0104-3004	8.37	-47.24
1300525	127003	AOML		709	-	-	X	X	X	-	-	X	-	-	-	L	0104-3004	7.47	-46.97
1300530	114916	AOML		683	-	-	X	-	X	-	-	X	-	-	-	L	0104-3004	10.12	-27.45
1300531	114921	AOML		650	-	-	X	-	X	-	-	X	-	-	-	L	0104-3004	14.87	-44.17
1300569	114880	AOML		689	-	-	X	-	X	-	-	X	-	-	-	L	0104-3004	30.36	-30.26
1300570	116474	AOML		716	-	-	X	-	X	-	-	X	-	-	-	L	0104-3004	37.41	-23.62
1300572	127002	AOML		716	-	-	X	X	X	-	-	X	-	-	-	L	0104-3004	35.08	-28.96
1300590	139285	AOML		695	-	-	X	X	X	-	-	X	-	-	-	L	0104-3004	34.03	-21.71
1300633	109491	AOML		714	-	-	X	X	X	-	-	X	-	-	-	L	0104-3004	35.66	-29.75
1300659	11910180	UKMO		720	-	-	X	X	X	-	-	X	-	-	-	T	0104-3004	27.52	-51.81
1300660	11022040	UKMO		720	-	-	X	X	X	-	-	X	-	-	-	T	0104-3004	32.16	-50.27
1300661	62325770	UKMO		719	-	-	X	X	X	-	-	X	-	-	-	T	0104-3004	10.47	-26.55
1300662	11098800	UKMO		720	-	-	X	X	X	-	-	X	-	-	-	T	0104-3004	28.18	-46.24
1500951				494	-	-	X	X	X	-	-	X	-	-	-	T	0904-3004	1.98	-20.33
2100942	119223	AOML		711	-	-	X	X	X	-	-	X	-	-	-	L	0104-3004	28.41	-28.66
2500540		APL		720	-	-	X	X	X	-	-	-	-	-	-	L	0104-3004	84.85	-25.59
2500575				720	-	-	X	X	X	-	-	-	-	-	-	L	0104-3004	85.50	-31.92
3100515				655	-	-	X	-	X	-	-	X	-	-	-	L	0104-3004	12.83	-53.97
3100717	61614160	CMM		720	-	-	X	X	X	-	-	X	-	-	-	T	0104-3004	18.78	-57.98
3100719				419	-	-	X	X	X	-	-	X	-	-	X	T	1304-3004	2.88	-21.92
3100720				797	-	-	X	X	X	-	-	X	-	-	X	T	1404-3004	4.25	-18.35
3100862	61213570	LOCE		1440	-	-	X	X	X	-	-	X	-	-	X	T	0104-3004	4.04	5.04
3100863	61611040	CMM		716	-	-	X	X	X	-	-	X	-	-	-	T	0104-3004	18.75	-54.96
4100560	114550	AOML		711	-	-	X	-	-	-	-	X	-	-	-	L	0104-3004	31.48	-28.47
4100564	109221	AOML		703	-	-	X	-	X	-	-	X	-	-	-	L	0104-3004	34.90	-33.35
4100580	132677	AOML		701	-	-	X	X	X	-	-	X	-	-	-	L	0104-3004	15.88	-43.20
4100590	132676	AOML		707	-	-	X	X	X	-	-	X	-	-	-	L	0104-3004	19.98	-61.32
4100591	132678	AOML		707	-	-	X	X	X	-	-	X	-	-	-	L	0104-3004	16.50	-51.41
4100594	127029	AOML		686	-	-	X	X	X	-	-	X	-	-	-	L	0104-3004	21.45	-47.77
4100596	11473050	EUME		720	-	-	X	X	X	-	-	X	-	-	-	T	0104-3004	22.43	-60.31
4100597	61512840	AOML		720	-	-	X	X	X	-	-	X	-	-	-	T	0104-3004	23.16	-56.74

E-SURFMAR DB Monthly Report April 2015

4100598	61610040	AOML	720	-	-	X	X	X	-	-	X	-	-	-	T	0104-3004	23.88	-47.46
4100599	61615070	AOML	38	-	-	X	X	X	-	-	X	-	-	-	T	2904-3004	21.82	-69.70
4100600	61618040	AOML	720	-	-	X	X	X	-	-	X	-	-	-	T	0104-3004	15.21	-59.99
4100632	11474050	EUME	720	-	-	X	X	X	-	-	X	-	-	-	T	0104-3004	26.63	-63.08
4100705	11596570	AOML	720	-	-	X	X	X	-	-	X	-	-	-	T	0104-3004	35.33	-52.39
4100706	11595580	AOML	720	-	-	X	X	X	-	-	X	-	-	-	T	0104-3004	24.86	-62.13
4100711	11477030	EUME	720	-	-	X	X	X	-	-	X	-	-	-	T	0104-3004	32.01	-50.27
4100739	11912120	UKMO	720	-	-	X	X	X	-	-	X	-	-	-	T	0104-3004	32.11	-67.51
4100933	101721	AOML	720	-	-	X	X	X	-	-	X	-	-	-	L	0104-3004	36.55	-44.64
4100936	109488	AOML	636	-	-	X	X	-	-	-	X	-	-	-	L	0104-3004	33.17	-54.85
4100975	109439	AOML	692	-	-	X	X	X	-	-	X	-	-	-	L	0104-3004	38.41	-42.72
4400505	98087	ICEP	1525	-	-	X	X	X	-	-	-	-	-	-	L	0104-3004	43.69	-12.36
4400516	114599	AOML	691	-	-	X	X	X	-	-	X	-	-	-	L	0104-3004	30.45	-67.23
4400554	126479	AOML	705	-	-	X	X	X	-	-	X	-	-	-	L	0104-3004	31.70	-43.47
4400558	123286	AOML	721	-	-	X	X	X	-	-	X	-	-	-	L	0104-3004	36.23	-46.06
4400560	126480	AOML	709	-	-	X	X	-	-	-	X	-	-	-	L	0104-3004	48.05	-28.23
4400896	109438	AOML	716	-	-	X	X	X	-	-	X	-	-	-	L	0104-3004	31.08	-41.52
4700503		APL	720	-	-	X	X	X	-	-	-	-	-	-	L	0104-3004	73.86	-16.90
4700585	11541430	EC	719	-	-	X	X	X	-	-	-	-	-	-	O	0104-3004	68.22	-66.65
4700586	11541440	EC	720	-	-	X	X	X	-	-	S	-	-	-	O	0104-3004	54.02	-48.42
4800506	60835100	EC	254	-	X	X	X	-	-	-	X	-	-	-	O	1904-3004	83.83	-67.84
4800568	61363210	PSC	720	-	-	X	X	X	-	-	S	-	-	-	O	0104-3004	63.79	-35.37
4800597	100009	PSC	1242	X	X	X	-	-	-	-	X	-	-	-	O	0104-3004	83.72	-23.57
4800679			682	-	-	X	X	X	-	-	X	-	-	-	T	0104-3004	86.29	-38.01
4800778	60894080	EC	720	-	-	X	X	X	-	-	-	-	-	-	O	0104-3004	76.95	-14.93
4800779	60890090	EC	716	-	X	X	X	-	-	-	-	-	-	-	O	0104-3004	68.36	-24.00
6300546	61361200	PSC	720	-	-	X	X	X	-	-	X	-	-	-	O	0104-3004	68.88	-3.81
6400532			720	-	-	X	X	X	-	-	-	-	-	-	L	0104-3004	59.00	-46.11
6400534			721	-	-	X	X	X	-	-	-	-	-	-	L	0104-3004	61.05	-36.13
6400535			720	-	-	X	X	X	-	-	-	-	-	-	L	0104-3004	68.07	-29.24
6400546			660	-	-	X	X	X	-	-	X	-	-	-	T	0304-3004	62.61	-39.81

----- Abbreviations -----

WMO : WMO id.
 Argos : Argos id.
 Typ : Buoy type
 - first character : Manufacturer (C = ConMar , M = Metocean, P = Pacific Gyre
 T = Technocean, Y = Marlin-Yug...)
 - second character : Main type (F = FGGE, I = ICEB, S = SVP)
 - third character : Sub type (B = barometer buoy, W = Wind buoy,
 S = Salinity buoy)
 Ow : Buoy owner (country code or EU for EUCOS, E2 for HRSST-2 buoys, UP for upgraded
 buoys)
 Owner : Buoy owner for non EUCOS buoys
 Nobs : number of GTS reports received at Meteo-France
 Parameters (X = OK, S = stopped, - = not measured) :
 Wi : Wind
 AT : Air Temperature
 AP : Air Pressure
 dP : Air pressure tendency
 ST : Sea surface Temperature
 Wa : Wave period and height
 Ws : Wave spectra
 Dr : Drogue presence
 Sb : Subsurface temperature
 U : Relative humidity
 SS : Sea surface Salinity
 O : Origin of the reports (T = Argos Toulouse, L = Argos Largo, O = Other)
 Start_end : first and last dates of the month for which GTS data were received at Meteo-France
 Lat : Latitude of the latest position
 Lon : Longitude of the latest position
 Age : Age of the buoy (days)
 DepDate : Date of deployment
 DepLat : Latitude of deployment
 Dep Lon : Longitude of Deployment
 From : Harbour of departure

Definition : An operating drifting buoy is a buoy providing at least air pressure or wind
 (direction and velocity) data.

**E-SURFMAR DB Monthly Report
April 2015**

MOORED BUOYS

Former EGOS stations (K-pattern and Hydrosphere)

WMO	Name	nobs	Wi	AT	AP	dP	ST	Wa	Ws	Dr	Sb	U	SS	O	Start_end	Lat	Lon
6100001	Cote d'Azur	717	X	X	X	X	X	-	X	-	-	X	-	T	0104-3004	43.40	7.80
6100002	Lion	717	X	X	X	X	X	-	X	-	-	X	-	T	0104-3004	42.10	4.70
6200001	Gascogne	719	X	X	X	X	X	-	-	-	-	X	-	O	0104-3004	45.30	-5.00
6200029	K1	690	X	X	X	-	X	X	-	-	-	X	-	O	0104-3004	48.70	-12.50
6200081	K2	711	X	X	X	X	X	X	-	-	-	S	-	O	0104-3004	51.00	-13.20
6200090	M1	-	-	-	-	-	-	-	-	-	-	-	-	-	-	53.10	-11.20
6200091	M2	715	X	X	X	-	X	X	-	-	-	X	-	O	0104-3004	53.50	-5.40
6200092	M3	717	X	X	X	-	X	X	-	-	-	X	-	O	0104-3004	51.20	-10.50
6200093	M4	718	X	X	X	-	X	S	-	-	-	-	-	O	0104-3004	54.70	-9.10
6200094	M5	717	X	X	X	-	X	X	-	-	-	X	-	O	0104-3004	51.70	-6.70
6200095	M6	223	S	X	X	X	X	X	-	-	-	X	-	O	2204-3004	53.10	-15.90
6200105	K4	176	S	S	S	S	S	S	-	-	-	S	-	-	2004-2704	55.80	-11.40
6200108	K3	-	-	-	-	-	-	-	-	-	-	-	-	-	-	53.50	-19.50
6200163	Brittany	720	X	X	X	X	X	X	X	-	-	X	-	O	0104-3004	47.50	-8.40
6400045	K5	711	-	X	X	X	X	X	-	-	-	X	-	O	0104-3004	59.10	-11.70
6400046	K7	720	X	-	X	-	-	X	-	-	-	-	-	O	0104-3004	60.70	-5.20

Comments:

- EUMETNET moored buoys are presented in bold characters.

Former EGOS moored buoys (Spanish SeaWatch and WaveScan)

WMO	Name	nobs	Wi	AT	AP	dP	ST	Wa	Ws	Dr	Sb	U	SS	O	Start_end	Lat	Lon
1300130	Gran Canaria	720	X	X	X	-	-	X	X	-	-	-	-	O	0104-3004	28.18	-15.82
1300131	Tenerife Sur	-	-	-	-	-	-	-	-	-	-	-	-	-	-	28.00	-16.58
6100196	C. Begur	-	-	-	-	-	-	-	-	-	-	-	-	-	-	41.92	3.65
6100197	Mahon	227	X	X	X	-	-	X	X	-	-	-	-	O	0104-3004	39.72	4.42
6100198	C. de Gata	720	X	X	X	-	X	X	X	-	-	-	S	O	0104-3004	36.57	-2.33
6100280	Tarragona	396	X	X	X	-	X	X	X	-	-	-	X	O	0104-3004	40.77	1.47
6100281	Valencia	654	X	X	X	-	X	X	X	-	-	-	X	O	0104-3004	39.47	-0.27
6100417	C. de Palos	720	X	X	X	-	X	X	X	-	-	-	X	O	0104-3004	37.65	-0.32
6100430	Dragonera	720	X	X	X	-	X	X	X	-	-	-	-	O	0104-3004	39.56	2.11
6200024	Bilbao-Visc.	720	X	X	X	-	X	X	X	-	-	-	X	O	0104-3004	43.63	-3.03
6200025	C. de Penas	675	X	X	X	-	X	X	X	-	-	-	X	O	0104-3004	43.73	-6.17
6200082	E. de Bares	660	X	X	X	-	X	X	X	-	-	-	X	O	0104-3004	44.13	-7.69
6200083	Villano-Sis.	487	S	S	S	-	S	S	X	-	-	-	S	-	0104-2104	43.48	-9.22
6200084	C. Silleiro	719	X	X	X	-	X	X	X	-	-	-	X	O	0104-3004	42.12	-9.43
6200085	G. de Cadiz	720	X	X	X	-	X	X	X	-	-	-	X	O	0104-3004	36.48	-6.97
6201030	Santander	-	-	-	-	-	-	-	-	-	-	-	-	-	-	43.84	-3.77

Comments:

- The EUMETNET buoy is presented in bold characters.

Operating POSEIDON moored buoys (Greece)

WMO	Name	nobs	Wi	AT	AP	dP	ST	Wa	Ws	Dr	Sb	U	SS	O	Start_end	Lat	Lon
6101000		-	-	-	-	-	-	-	-	-	-	-	-	-	-	39.10	24.50
6101001		220	X	X	X	-	-	X	-	-	-	-	-	O	0104-3004	37.60	23.60
6101002		-	-	-	-	-	-	-	-	-	-	-	-	-	-	37.00	22.10
6101003		228	X	-	X	-	-	X	-	-	-	-	-	O	0104-3004	40.00	24.70
6101004		-	-	-	-	-	-	-	-	-	-	-	-	-	-	39.10	25.80
6101005		-	-	-	-	-	-	-	-	-	-	-	-	-	-	37.50	25.50
6101006		-	-	-	-	-	-	-	-	-	-	-	-	-	-	36.30	25.50
6101007		239	X	X	X	-	-	X	-	-	-	-	-	O	0104-3004	35.80	24.90
6101008		201	X	X	X	-	-	X	-	-	-	-	-	O	0104-3004	36.80	21.60
6101009		-	-	-	-	-	-	-	-	-	-	-	-	-	-	38.00	20.60

E-SURFMAR DB Monthly Report April 2015

Other European moored buoys (operated by 3rd parties)

WMO	Name	nobs	Wi	AT	AP	dP	ST	Wa	Ws	Dr	Sb	U	SS	O	Start_end	Lat	Lon
1200050	Cycofos		-	-	-	-	-	-	-	-	-	-	-			33.60	31.90
6100010	Italia-1		-	-	-	-	-	-	-	-	-	-	-			43.80	9.10
6200027	Jersey	242	X	-	X	X	-	X	-	-	-	-	-	O	0104-3004	49.08	-22.20
6200030	L4	240	X	X	X	-	-	-	-	-	-	X	-	O	2004-3004	50.25	-4.22
6200050	E1		-	-	-	-	-	-	-	-	-	-	-			50.04	-4.37
6200086	NSB II		-	-	-	-	-	-	-	-	-	-	-			55.00	6.40
6200087	NSB III		-	-	-	-	-	-	-	-	-	-	-			54.70	6.80
6200191	Porto	682	X	X	X	-	-	X	-	-	-	-	-	O	0104-3004	41.15	-9.57
6200192	Peniche		-	-	-	-	-	-	-	-	-	-	-			39.50	-9.65
6200303	Turbo Bank	720	X	X	X	X	X	X	-	-	-	X	-	O	0104-3004	51.60	-5.10
6200442	PAP	726	X	-	-	-	-	-	-	-	-	-	-	O	0104-3004	49.00	-16.40
6600021	Arkona Becken	210	X	X	-	-	X	X	-	-	-	-	-	O	0104-3004	54.90	13.90
6600022	Oder Bank		-	-	-	-	-	-	-	-	-	-	-			54.10	14.20
6600024	Darsser Schwelle	665	X	X	-	-	X	X	-	-	-	-	-	O	0104-3004	54.70	12.70

Other offshore moored buoys inside the EUMETNET area

WMO	Name	nobs	Wi	AT	AP	dP	ST	Wa	Ws	Dr	Sb	U	SS	O	Start_end	Lat	Lon
1300001		526	X	X	X	-	X	-	-	-	-	X	-	L	0104-3004	11.47	-23.00
1300008		453	X	X	X	-	X	-	-	-	-	X	-	L	0104-3004	14.98	-38.02
1300308	East Atlantic		-	-	-	-	-	-	-	-	-	-	-			15.00	-38.00
4100026		408	X	X	-	-	-	-	-	-	-	X	-	L	0104-3004	11.49	-38.40
4100040	West Atlantic	745	X	X	X	X	X	X	-	-	-	X	-	O	0104-3004	14.50	-53.00
4100041	Mid. Atlantic	745	X	X	X	X	X	X	-	-	-	-	-	O	0104-3004	14.50	-46.00
4100043	Porto Rico	748	X	X	X	X	X	X	-	-	-	X	-	O	0104-3004	21.00	-65.00
4100044		745	X	X	X	X	X	X	-	-	-	X	-	O	0104-3004	21.70	-58.70
4100046		746	X	X	X	X	X	X	-	-	-	X	-	O	0104-3004	23.90	-70.90
4100047			-	-	-	-	-	-	-	-	-	-	-			27.50	-71.50
4100048		594	X	X	X	X	X	X	-	-	-	X	-	O	0104-3004	32.00	-69.60
4100049		743	X	X	X	X	X	X	-	-	-	X	-	O	0104-3004	27.50	-53.00
4100139		568	X	X	X	-	X	-	-	-	-	X	-	L	0104-3004	20.02	-37.86
4100300	Antilles	712	X	X	X	X	X	-	-	-	-	X	-	T	0104-3004	15.85	-57.47
4200059	Caraibes		-	-	-	-	-	-	-	-	-	-	-			15.00	-67.50
4400008	A Nantucket	748	X	X	X	X	X	X	-	-	-	X	-	O	0104-3004	40.50	-69.40
4400011	D Georges Bk	134	X	X	X	X	X	X	-	-	-	-	-	O	2504-3004	41.10	-66.60
4400018	SE Cape Cod	153	X	X	X	X	X	X	-	-	-	X	-	O	2404-3004	41.30	-69.30
4400024	NNE Channel	680	X	X	X	-	X	X	-	-	-	-	-	O	0104-3004	42.30	-65.90
4400137	E Scotia Sl.	713	X	X	X	X	X	X	-	-	-	-	-	O	0104-3004	42.30	-62.00
4400138	SW Gd Banks		-	-	-	-	-	-	-	-	-	-	-			44.30	-53.60
4400139	Beanquereau	716	X	X	X	X	X	X	-	-	-	-	-	O	0104-3004	44.30	-57.10
4400140	Tail of Bk		-	-	-	-	-	-	-	-	-	-	-			43.80	-51.70
4400141	Larentian F	708	X	X	X	X	X	X	-	-	-	-	-	O	0104-3004	43.00	-58.00
4400150	La Have Bk	694	X	X	X	X	X	X	-	-	-	-	-	O	0104-3004	42.50	-64.00

E-SURFMAR DB Monthly Report April 2015

Buoy-QC statistics from Meteo-France model outputs

Datend : Date of the last value received on GTS
Recvd : Total number of values received on GTS
GE : Number of Gross Errors (excluded from bias and sd computations)
bias : Mean differences between observation values and co-located model output values
Std : Standard deviation of differences

Air Pressure (hPa), drifting buoys, April 2015

Datend	WMO	Telcom	Recvd	GE	Bias	Std
20150430	1300868	11686410	412	0	0.2	0.4
20150430	1300869	11688410	720	0	0.1	0.3
20150430	1300870	61512860	720	0	0.6	0.5
20150430	1300871	61516870	653	0	0.7	0.4
20150430	1300872	61611050	720	0	0.5	0.5
20150430	1500681	61661310	303	0	0.8	0.8
20150430	1500682	61663300	317	1	0.5	0.9
20150430	1500683	61663370	340	0	0.7	0.8
20150430	1500684	62328350	327	0	-1.5	0.9
20150430	2500616	61762070	720	0	0.5	0.5
20150430	2500617	61767070	720	0	-0.1	0.7
20150430	2500618	11020180	221	0	0.6	0.4
20150430	2500620	61760090	720	0	0.0	0.7
20150430	4100969	60213780	720	0	-0.4	0.6
20150430	4100970	60213790	720	0	0.2	0.6
20150430	4100971	60215900	720	0	-0.0	0.4
20150430	4100972	60217780	719	0	0.1	0.5
20150430	4400513	61475450	719	0	0.3	0.5
20150430	4400515	61476450	720	0	0.2	0.8
20150430	4400517	61477390	720	0	0.3	0.5
20150430	4400546	11160640	720	0	-0.1	0.3
20150430	4400547	60173710	720	0	0.2	0.6
20150430	4400548	11799230	720	0	0.2	0.6
20150430	4400549	60896130	720	0	0.2	0.6
20150430	4400550	60894140	720	0	0.3	0.5
20150430	4400551	60892140	720	0	0.2	0.7
20150430	4400601	60890150	720	0	-0.1	0.5
20150430	4400602	11468700	720	0	-0.1	0.4
20150430	4400606	11162640	720	0	0.1	0.5
20150430	4400608	11093800	72	28	-0.3	1.8
20150430	4400609	61613050	720	0	0.4	0.5
20150430	4400612	61511880	683	0	0.0	0.5
20150430	4400613	11475040	720	0	-0.3	0.4
20150430	4400614	61661340	716	0	0.1	0.4
20150430	4400620	61667370	720	0	0.3	0.7
20150430	4400621	61519840	705	0	0.7	0.5
20150430	4400622	61668320	508	0	-0.3	0.5
20150430	4400623	61669330	720	0	-0.2	0.6
20150430	4400624	11341110	702	0	-0.2	0.4
20150430	4400625	61668340	594	0	0.3	0.6
20150430	4400725	11027170	720	0	0.1	0.7
20150430	4400739	61516840	720	0	0.5	0.8
20150430	4400740	11883820	720	0	-0.1	0.6
20150413	4400747	61610060	281	0	-0.3	0.5
20150430	4400760	61662360	720	0	-0.2	0.8
20150430	4400761	61669320	720	0	-0.4	0.6
20150430	4400762	61664310	720	0	0.3	0.7
20150430	4400763	61667330	720	0	0.1	0.7
20150430	4400764	61662330	720	0	-0.3	0.7
20150430	4400773	60211790	676	0	0.2	0.8
20150430	4400774	61477400	719	0	0.2	0.8
20150430	4400775	61476400	720	0	0.3	0.7
20150430	4400776	61474410	718	0	0.6	0.7
20150430	4400778	61475430	719	0	0.4	0.5
20150408	4400779	11885820	187	0	0.3	0.4
20150430	4400835	60218770	720	0	-0.2	0.4
20150430	4400836	60218680	719	0	0.1	0.6
20150430	4400837	60209590	719	0	0.0	0.4
20150430	4400839	60205090	720	0	-0.0	0.4
20150430	4400846	60441290	716	0	0.5	0.3
20150430	4400847	60442280	720	0	0.4	0.4

E-SURFMAR DB Monthly Report April 2015

20150430	4400848	60448280	720	0	0.3	0.5
20150430	4400863	60211690	720	0	-0.2	0.4
20150430	4400866	11793240	720	0	-0.4	0.8
20150430	4400867	11593590	720	0	-0.3	0.6
20150430	4400868	11794230	719	0	0.1	0.6
20150430	4400871	11790240	720	0	0.0	0.4
20150430	4400872	60202920	720	0	-0.4	0.6
20150430	4400877	60526170	720	0	-0.0	0.3
20150430	4400878	60528170	720	0	-0.0	0.5
20150426	4400880	60556880	619	0	-0.3	0.6
20150430	4400885	60218780	720	0	-0.1	0.5
20150430	4400887	60251440	719	0	0.0	0.5
20150430	4400888	60359010	720	0	-0.1	0.5
20150430	4400889	60202320	720	0	-0.1	0.5
20150430	4400890	12000230	719	0	0.0	0.6
20150430	4400891	12007220	720	0	0.0	0.3
20150430	4400892	60018400	720	0	-0.2	0.6
20150430	6200513	61665360	720	0	0.2	0.6
20150430	6200514	60203700	720	0	-0.1	0.5
20150430	6200516	11475100	720	0	0.3	0.4
20150430	6200536	11599570	720	0	-0.3	0.5
20150430	6200538	11460700	204	5	-0.0	1.8
20150430	6200539	60891140	720	0	0.2	0.5
20150430	6200551	60897120	720	0	-0.1	0.5
20150430	6200552	11797240	720	0	0.2	0.4
20150430	6200553	11165650	720	0	0.0	0.7
20150430	6200677	61663310	720	0	0.4	0.6
20150430	6200681	11168640	721	0	-0.2	0.4
20150430	6200687	11349100	720	0	-0.1	0.6
20150430	6200695	60408990	720	0	0.3	0.3
20150430	6200713	11246980	705	0	-0.1	0.6
20150430	6200714	11240980	714	0	-0.2	0.6
20150430	6200940	60203850	719	0	0.1	0.3
20150430	6200941	60207590	720	0	-0.1	0.3
20150430	6300640	60172710	720	0	0.1	0.6
20150407	6300641	61665210	157	48	-0.6	4.6
20150430	6300644	61766070	720	0	-0.5	1.0
20150430	6400517	61619060	584	0	0.7	0.6
20150430	6400518	60892150	712	0	0.2	0.5
20150430	6400519	61518850	720	0	0.4	0.5
20150430	6400520	11479040	720	55	-0.4	1.6
20150430	6400521	11470030	720	0	-0.2	0.9
20150430	6400522	61511870	718	0	0.0	0.7
20150430	6400523	61510870	719	0	0.4	0.7
20150430	6400524	61619040	720	0	-0.1	0.6
20150430	6400525	60175710	252	5	-0.3	1.8
20150430	6400526	61611070	720	0	0.3	0.8
20150430	6400527	61514840	691	0	0.7	0.7
20150430	6400606	61515870	597	0	0.9	0.6
20150430	6400613	60174710	720	0	0.1	0.8
20150430	6400614	60178700	720	0	0.0	0.6
20150430	6400615	60173700	720	6	0.3	2.0
20150430	6400620	60899130	720	0	0.1	0.6
20150430	6400621	61614070	716	0	0.4	0.7
20150430	6400622	60172810	720	0	0.0	0.6
20150430	6400623	11470040	720	20	0.2	2.4
20150430	6400665	60171710	720	0	0.0	1.0
20150430	6400666	60179710	720	0	0.2	0.6
20150430	6400667	61615060	604	0	0.1	0.7
20150430	6400668	60177860	720	40	-0.5	2.0
20150430	6400669	60177710	720	0	0.0	0.9
20150430	6400692	60172720	720	0	0.2	0.5
20150430	6500596	61511850	720	0	0.5	0.8
20150430	6500598	11792240	720	1	0.1	0.7

Air Pressure (hPa), moored buoys, April 2015

Datend	WMO	Telcom	Recvd	GE	Bias	Std
20150430	1300130		720	0	0.5	0.6
20150430	6100001		717	0	-1.0	0.5
20150430	6100002		706	0	0.3	0.6
20150430	6100197		227	0	-0.4	0.6
20150430	6100198		720	0	0.3	0.9

E-SURFMAR DB Monthly Report April 2015

20150430	6100280	396	0	0.4	0.7
20150430	6100281	654	0	0.4	0.8
20150430	6100417	720	0	0.8	0.8
20150430	6100430	720	0	0.3	0.7
20150430	6101001	220	0	0.6	0.7
20150430	6101003	228	0	0.9	0.7
20150430	6101007	238	0	0.0	0.7
20150430	6101008	201	0	0.2	0.7
20150430	6200001	719	0	0.1	0.6
20150430	6200024	720	0	0.4	0.7
20150430	6200025	675	0	0.3	0.7
20150430	6200027	240	0	-0.1	0.6
20150430	6200029	690	0	0.1	0.5
20150430	6200030	240	0	-0.1	0.3
20150430	6200081	711	0	0.1	0.5
20150430	6200082	660	0	0.3	0.7
20150421	6200083	487	0	0.5	0.6
20150430	6200084	719	0	0.4	0.6
20150430	6200085	720	0	0.0	0.9
20150430	6200091	715	0	-0.0	0.6
20150430	6200092	717	0	0.1	0.4
20150430	6200093	718	0	0.2	0.4
20150430	6200094	717	0	-0.0	0.5
20150430	6200095	202	0	1.1	2.8
20150424	6200105	93	0	0.1	0.2
20150430	6200163	720	0	0.1	0.5
20150430	6200191	682	0	0.1	0.5
20150430	6200303	720	0	0.0	0.5
20150430	6400045	673	1	0.1	0.4
20150430	6400046	720	0	0.2	0.5

Air Temperature (C), moored buoys, April 2015

Datend	WMO	Telcom	Recvd	GE	Bias	Std
20150430	1300130		720	0	-0.1	0.5
20150430	6100001		717	1	0.0	0.7
20150430	6100002		717	0	-0.1	0.5
20150430	6100197		227	0	1.9	0.6
20150430	6100198		720	0	0.2	0.9
20150430	6100280		396	0	0.2	0.6
20150430	6100281		653	0	0.3	0.7
20150430	6100417		720	0	0.1	0.5
20150430	6100430		720	0	0.8	0.6
20150430	6101001		220	0	-0.1	0.7
20150430	6101007		239	0	1.1	0.7
20150430	6101008		201	0	-0.1	0.9
20150430	6200001		719	0	0.0	0.4
20150430	6200024		720	0	0.5	0.7
20150430	6200025		675	0	0.0	0.6
20150430	6200029		690	0	0.2	0.5
20150430	6200030		240	0	0.2	1.8
20150430	6200081		711	0	-0.1	0.6
20150430	6200082		660	0	-0.0	0.5
20150421	6200083		487	0	-0.2	0.5
20150430	6200084		719	0	0.1	0.7
20150430	6200085		720	0	0.1	0.6
20150430	6200091		715	0	0.1	0.6
20150430	6200092		717	0	-0.1	0.6
20150430	6200093		718	0	-0.1	0.7
20150430	6200094		717	0	0.1	0.7
20150430	6200095		76	0	-0.4	0.4
20150424	6200105		93	0	0.1	0.5
20150430	6200163		713	0	0.1	0.6
20150430	6200191		682	0	0.1	0.7
20150430	6200303		713	0	0.2	0.7
20150430	6400045		711	0	-0.4	0.6
20150430	6600021		210	0	0.3	0.6
20150430	6600024		665	0	0.5	0.8

Wind direction (deg.), moored buoys, April 2015

Datend	WMO	Telcom	Recvd	GE	Bias	Std
20150430	1300130		719	22	15	22

E-SURFMAR DB Monthly Report April 2015

20150430	6100001	711	115	-10	37
20150430	6100002	714	111	-3	32
20150430	6100197	227	10	-20	21
20150430	6100198	672	18	2	23
20150430	6100280	390	25	-1	32
20150430	6100281	642	45	7	32
20150422	6100417	498	18	-6	21
20150430	6100430	710	41	-12	31
20150430	6101001	219	21	0	36
20150430	6101003	228	26	-7	45
20150430	6101007	237	11	-11	31
20150430	6101008	201	24	5	33
20150430	6200001	717	15	-5	23
20150430	6200024	690	118	64	47
20150430	6200025	668	46	1	32
20150430	6200027	192	12	0	34
20150430	6200029	689	1	3	15
20150430	6200030	240	22	-73	25
20150430	6200081	711	5	-4	15
20150430	6200082	655	16	-3	23
20150421	6200083	485	16	-5	20
20150430	6200084	710	28	-0	25
20150430	6200085	707	21	-1	20
20150430	6200091	715	32	0	24
20150430	6200092	717	3	3	16
20150430	6200093	718	4	5	18
20150430	6200094	716	9	-1	16
20150428	6200095	138	125	-5	12
20150424	6200105	93	1	3	25
20150430	6200163	719	12	-0	16
20150430	6200191	681	25	-8	25
20150430	6200303	718	20	-2	25
20150430	6200442	719	8	-2	14
20150430	6400046	717	3	3	14
20150430	6600021	209	1	-6	17
20150430	6600024	664	7	-1	17

Wind speed rate, moored buoys, April 2015

Datend	WMO	Telcom	Recvd	GE	Rate	Err
20150430	1300130		719	0	1.1	1.8
20150430	6100001		711	0	1.5	1.9
20150430	6100002		714	0	1.1	1.6
20150430	6100197		227	0	1.0	1.3
20150430	6100198		672	0	0.9	2.1
20150430	6100280		390	0	1.4	1.8
20150430	6100281		642	0	1.4	2.1
20150422	6100417		498	0	0.9	1.4
20150430	6100430		710	0	1.1	1.7
20150430	6101001		219	0	1.2	2.0
20150430	6101003		228	0	0.9	2.5
20150430	6101007		237	1	1.0	2.2
20150430	6101008		201	37	1.2	4.2
20150430	6200001		717	1	1.0	1.4
20150430	6200024		690	1	1.1	1.7
20150430	6200025		668	0	0.9	2.4
20150430	6200027		192	0	1.1	1.5
20150430	6200029		689	0	1.0	1.0
20150430	6200030		240	3	0.9	3.6
20150430	6200081		711	1	1.0	1.3
20150430	6200082		655	0	0.9	1.6
20150421	6200083		485	0	0.9	1.7
20150430	6200084		710	0	1.1	1.5
20150430	6200085		707	0	0.8	1.7
20150430	6200091		715	0	1.1	1.7
20150430	6200092		717	0	1.0	1.2
20150430	6200093		718	0	1.0	1.4
20150430	6200094		716	0	1.0	1.3
20150428	6200095		13	0	0.9	1.5
20150424	6200105		93	0	1.0	1.0
20150430	6200163		719	0	1.0	1.2
20150430	6200191		681	0	0.0	0.0
20150430	6200303		718	0	1.1	1.5
20150430	6200442		719	0	1.1	1.4

E-SURFMAR DB Monthly Report April 2015

20150430	6400046	717	0	1.1	1.4
20150430	6600021	209	0	1.2	1.5
20150430	6600024	664	0	1.1	1.4

Comments on QC statistics :

Air pressure

1. Metocean buoy WMO **1500684** (AtlantOS) presented a systematic bias of about 1.5 hPa in April. This was corrected on the 13th of May.
2. Pressure measurements were rehabilitated in April for buoys WMO **4400608** and **6300641** but the GTS transmission had to be stopped again later for this parameter.
3. Metocean buoys WMO **6200538**, **6400520**, **6400525**, **6400615**, **6400623** and **6400668** temporarily reported wrong pressure data in April for unknown reasons but not enough to have their GTS transmission stopped. This is also the case for Irish **M6** moored buoy **6200095**).

Air temperature

4. Spanish moored buoy **6100197** still presented a bias of about 2.0°C for air temperature in April.

Wind

5. Greek moored buoy WMO **6101008** reported a few dubious wind values in April.

Monthly QC statistics and other data quality control tools are available on line at :
<http://www.meteo.shom.fr/qctools/>

The working area of the E-SURFMAR website is open at <http://esurfmar.meteo.fr/wikisurf-wa/> . Ask the E-SURFMAR Programme Manager Pierre.Blouch@meteo.fr for the password in case you forgot it. Graphs of system performances may be displayed/downloaded at http://esurfmar.meteo.fr/doc/r/surfmar/others/e-surfmar_monitoring.pdf.