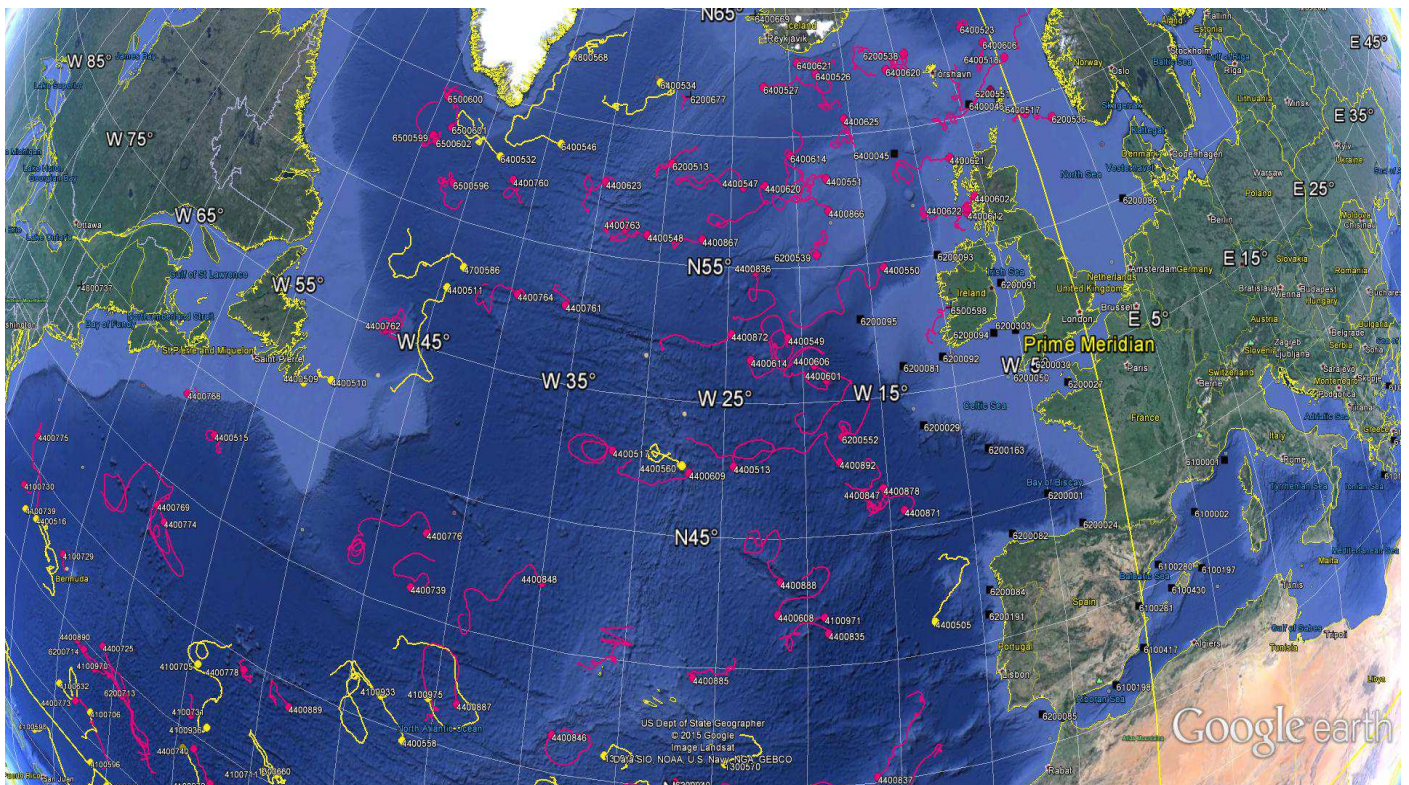


DATA BUOY MONTHLY REPORT

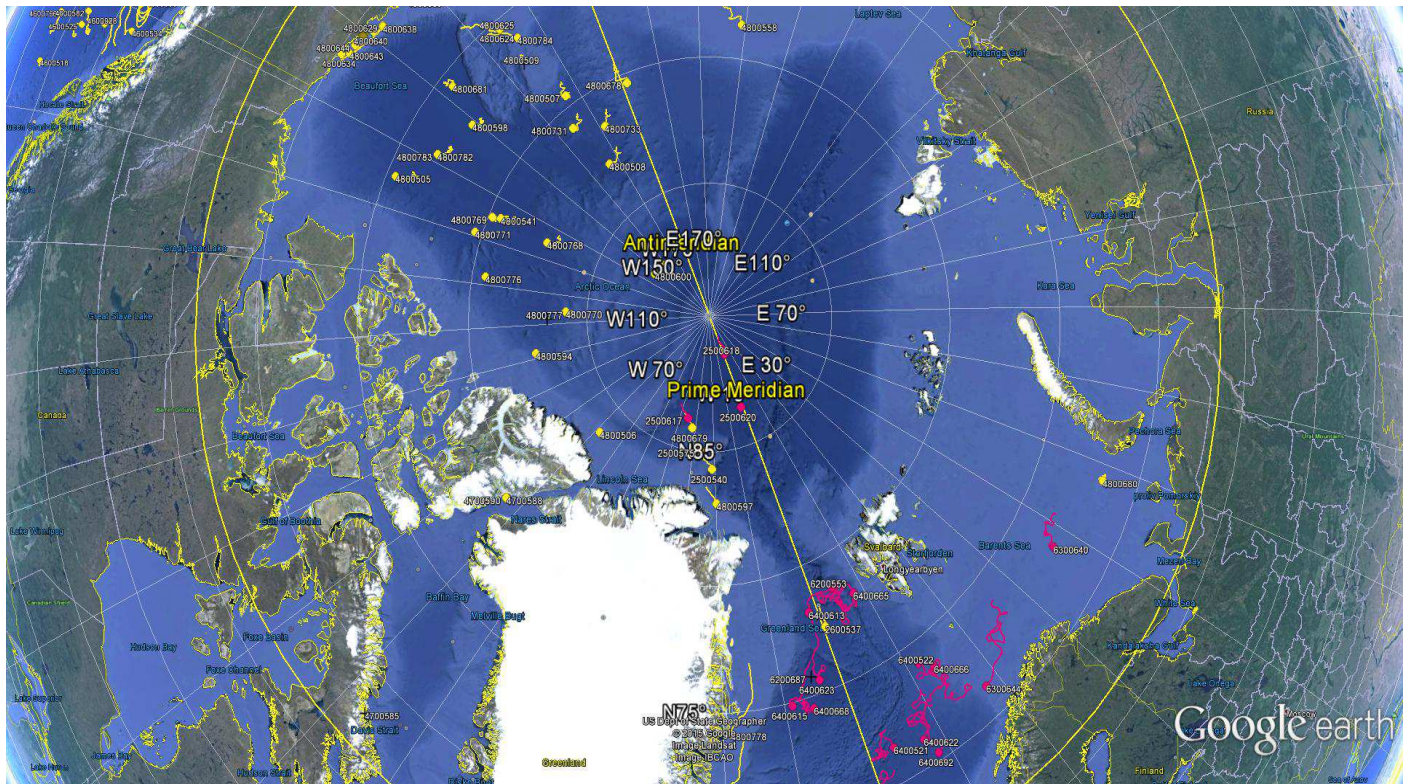
May 2015



*May 2015 : Operating data buoys in the North Atlantic
Drifting buoy trajectories : E-SURFMAR (red), others (yellow)
Moored buoy positions (black)*

*Most recent trajectories may be seen at:
http://www.meteo.shom.fr/cartographie/data/kml/MeteoFrance_buoys_map_15.kmz*

E-SURFMAR DB Monthly Report May 2015



May 2015
Drifting buoy trajectories in Arctic Ocean and adjacent seas : E-SURFMAR (red), others (yellow)

DRIFTING BUOYS

Network status

By the end of May, **124 Drifting buoys**, reporting air pressure onto the GTS, were in operation in the frame of E-SURFMAR. Out of these, 90 were E-SURFMAR funded Iridium SVP-Bs, including 5 in the Arctic, 4 in AtlantOS activities and 7 HRSST-2 buoys. The remaining buoys were: 34 drifters owned by NOAA and upgraded with barometers by E-SURFMAR.

Information about the availability of buoys for future deployments may be get from the E-SURFMAR wikisite (working area) at: http://esurfmar.meteo.fr/wikisurf-wa/index.php/Availability_of_drifting_buoys

Besides E-SURFMAR buoys, 62 drifting buoys were reporting at least air pressure observations from the EUMETNET area of interest. Out of these, 2 were reporting Sea Surface Salinity.

Drifting buoys - New deployments

WMO	Telcom	Typ	Ow	Dep_Date	DepLat	DepLon	From	Comment
	62320380	MSB	EU	20150525	32.1	-60.0	La Rochelle	Hermione - Failed at deployment
4100729	62321360	MSB	EU	20150527	32.3	-65.4	La Rochelle	Hermione
4100730	62326350	MSB	EU	20150528	33,9	-70,1	La Rochelle	Hermione
4100731	62329360	MSB	EU	20150522	31.9	-54.5	La Rochelle	Hermione
4400768	62322360	MSB	EU	20150523	44.2	-59.7	Halifax	CCGS Hudson
4400769	62328360	MSB	EU	20150522	39.7	-58.9	Halifax	CCGS Hudson
6500599	62326370	MSB	EU	20150510	59.1	-50.0	Halifax	CCGS Hudson
6500600	62326360	MSB	EU	20150511	60.0	-48.9	Halifax	CCGS Hudson
6500601	62320360	MSB	EU	20150513	59.7	-49.2	Halifax	CCGS Hudson
6500602	62323360	MSB	EU	20150518	58.2	-50.9	Halifax	CCGS Hudson

Operating drifting buoys in North Atlantic by the end of the month

WMO	Telcom	Typ	Ow	nobs	Wi	AT	AP	dP	ST	Wa	Ws	Dr	Sb	U	SS	O	Start_end	Lat	Lon	Age
1300868	11686410	MSB	EU	308	-	-	X	X	X	-	-	X	-	-	-	T	0105-3105	34.77	-16.55	192
1300869	11688410	MSB	EU	744	-	-	X	X	X	-	-	X	-	-	-	T	0105-3105	25.34	-34.03	190
1300870	61512860	MSB	EU	658	-	-	X	X	X	-	-	X	-	-	-	T	0105-3005	32.65	-16.91	79
1300871	61516870	MSB	EU	744	-	-	X	X	X	-	-	X	-	-	-	T	0105-3105	25.31	-28.40	78
1300872	61611050	MSB	EU	744	-	-	X	X	X	-	-	X	-	-	-	T	0105-3105	24.45	-19.30	79
1500681	61661310	MSB	EU	744	-	-	X	X	X	-	-	X	-	-	-	T	0105-3105	-12.16	-1.76	44
1500682	61663300	MSB	EU	744	-	-	X	X	X	-	-	X	-	-	-	T	0105-3105	-9.80	-3.57	45
1500683	61663370	MSB	EU	744	-	-	X	X	X	-	-	X	-	-	-	T	0105-3105	-7.20	-14.63	46
1500684	62328350	MSB	EU	744	-	-	X	X	X	-	-	X	-	-	-	T	0105-3105	-6.69	-8.02	45
2500616	61762070	MSB	EU	744	-	-	X	X	X	-	-	X	-	-	-	T	0105-3105	75.06	154.35	299
2500617	61767070	MSB	EU	744	-	-	X	X	X	-	-	X	-	-	-	T	0105-3105	86.16	-35.25	253
2500618	11020180	MSB	EU	744	-	-	X	X	-	-	-	X	-	-	-	T	0105-3105	88.47	1.07	41
2500620	61760090	MSB	EU	744	-	-	X	X	X	-	-	X	-	-	-	T	0105-3105	86.42	-1.29	247
4100729	62321360	MSB	EU	102	-	-	X	X	X	-	-	X	-	-	-	T	2705-3105	32.98	-65.91	5
4100730	62326350	MSB	EU	78	-	-	X	X	X	-	-	X	-	-	-	T	2805-3105	33.69	-71.03	4
4100731	62329360	MSB	EU	219	-	-	X	X	X	-	-	X	-	-	-	T	2205-3105	30.97	-54.16	10
4100969	60213780	PSB	UP	744	-	-	X	X	X	-	-	X	-	-	-	T	0105-3105	23.49	-53.34	662
4100970	60213790	PSB	UP	744	-	-	X	X	X	-	-	X	-	-	-	T	0105-3105	29.23	-61.57	661
4100971	60215900	PSB	UP	744	-	-	X	X	X	-	-	X	-	-	-	T	0105-3105	41.96	-19.05	661
4100972	60217780	PSB	UP	731	-	-	X	X	X	-	-	X	-	-	-	T	0105-3105	28.25	-52.34	661
4400513	61475450	DSB	UP	742	-	-	X	X	X	-	-	X	-	-	-	T	0105-3105	47.69	-24.35	84
4400515	61476450	DSB	UP	744	-	-	X	X	X	-	-	X	-	-	-	T	0105-3105	43.02	-57.08	86
4400517	61477390	DSB	UP	744	-	-	X	X	X	-	-	X	-	-	-	T	0105-3105	47.90	-31.71	83
4400546	11160640	MSB	EU	744	-	-	X	X	X	-	-	X	-	-	-	T	0105-3105	25.43	-36.64	803
4400547	60173710	MSB	EU	744	-	-	X	X	X	-	-	X	-	-	-	T	0105-3105	58.06	-24.09	294
4400548	11799230	MSB	E2	744	-	-	X	X	X	-	-	X	-	-	-	T	0105-3105	55.98	-31.03	294
4400549	60896130	MSB	EU	744	-	-	X	X	X	-	-	X	-	-	-	T	0105-3105	52.42	-20.92	267
4400550	60894140	MSB	EU	744	-	-	X	X	X	-	-	X	-	-	-	T	0105-3105	54.82	-13.90	267

E-SURFMAR DB Monthly Report May 2015

4400551	60892140	MSB	EU	744	-	-	X	X	X	-	-	X	-	-	-	T	0105-3105	58.34	-17.56	267
4400601	60890150	MSB	EU	744	-	-	X	X	X	-	-	X	-	-	-	T	0105-3105	50.84	-18.52	266
4400602	11468700	MSB	UP	733	-	-	X	X	X	-	-	X	-	-	-	T	0105-3105	56.92	-5.92	801
4400606	11162640	MSB	EU	744	-	-	X	X	X	-	-	X	-	-	-	T	0105-3105	51.40	-19.25	235
4400609	61613050	MSB	EU	744	-	-	X	X	X	-	-	X	-	-	-	T	0105-3105	47.38	-27.01	116
4400612	61511880	MSB	EU	720	-	-	X	X	X	-	-	X	-	-	-	T	0105-3105	56.33	-6.80	526
4400613	11475040	MSB	EU	744	-	-	X	X	X	-	-	X	-	-	-	T	0105-3105	30.40	-20.84	817
4400614	61661340	MSB	EU	731	-	-	X	X	X	-	-	X	-	-	-	T	0105-3105	51.61	-23.41	397
4400620	61667370	MSB	EU	744	-	-	X	X	X	-	-	X	-	-	-	T	0105-3105	58.12	-22.39	396
4400621	61519840	MSB	EU	744	-	-	X	X	X	-	-	X	-	-	-	T	0105-3105	58.57	-7.20	477
4400622	61668320	MSB	EU	528	-	-	X	X	-	-	-	X	-	-	-	T	0105-3105	56.53	-6.76	395
4400623	61669330	MSB	EU	744	-	-	X	X	X	-	-	X	-	-	-	T	0105-3105	57.73	-34.69	115
4400624	11341110	YSB	EU	731	-	-	X	X	X	-	-	X	-	-	-	T	0105-3105	24.74	-22.91	902
4400625	61668340	MSB	EU	630	-	-	X	X	X	-	-	X	-	-	-	T	0105-3105	60.63	-15.58	395
4400725	11027170	MSB	EU	744	-	-	X	X	X	-	-	X	-	-	-	T	0105-3105	30.75	-61.21	1073
4400739	61516840	MSB	EU	744	-	-	X	X	X	-	-	X	-	-	-	T	0105-3105	41.00	-42.33	363
4400740	11883820	PSB	UP	744	-	-	X	X	X	-	-	X	-	-	-	T	0105-3105	29.45	-53.66	1058
4400760	61662360	MSB	EU	744	-	-	X	X	X	-	-	X	-	-	-	T	0105-3105	57.06	-41.83	115
4400761	61669320	MSB	EU	744	-	-	X	X	X	-	-	X	-	-	-	T	0105-3105	52.91	-36.03	115
4400762	61664310	MSB	EU	744	-	-	X	X	X	-	-	X	-	-	-	T	0105-3105	50.10	-47.78	114
4400763	61667330	MSB	EU	741	-	-	X	X	X	-	-	X	-	-	-	T	0105-3105	56.10	-32.72	78
4400764	61662330	MSB	EU	744	-	-	X	X	X	-	-	X	-	-	-	T	0105-3105	52.91	-39.45	77
4400768	62322360	MSB	EU	200	-	-	X	X	X	-	-	X	-	-	-	T	2305-3105	43.79	-59.99	9
4400769	62328360	MSB	EU	225	-	-	X	X	X	-	-	X	-	-	-	T	2205-3105	38.80	-59.59	10
4400773	60211790	PSB	UP	690	-	-	X	X	X	-	-	X	-	-	-	T	0105-3105	26.48	-62.86	687
4400774	61477400	DSB	UP	743	-	-	X	X	X	-	-	X	-	-	-	T	0105-3105	38.35	-58.76	197
4400775	61476400	DSB	UP	742	-	-	X	X	X	-	-	X	-	-	-	T	0105-3105	36.44	-70.99	197
4400776	61474410	DSB	UP	744	-	-	X	X	X	-	-	X	-	-	-	T	0105-3105	43.25	-42.00	196
4400778	61475430	DSB	UP	743	-	-	X	X	X	-	-	X	-	-	-	T	0105-3105	34.57	-51.27	195
4400835	60218770	PSB	UP	729	-	-	X	X	X	-	-	X	-	-	-	T	0105-3105	41.33	-18.84	454
4400836	60218680	PSB	UP	729	-	-	X	X	X	-	-	X	-	-	-	T	0105-3105	54.86	-23.12	454
4400837	60209490	PSB	UP	730	-	-	X	X	X	-	-	X	-	-	-	T	0105-3105	35.28	-16.29	454
4400839	60205090	PSB	UP	728	-	-	X	X	X	-	-	X	-	-	-	T	0105-3105	34.48	-19.92	454
4400846	60441290	DSB	UP	726	-	-	X	X	X	-	-	X	-	-	-	T	0105-3105	36.65	-33.47	491
4400847	60442280	DSB	UP	732	-	-	X	X	X	-	-	X	-	-	-	T	0105-3105	46.49	-15.20	491
4400848	60448280	DSB	UP	730	-	-	X	X	X	-	-	X	-	-	-	T	0105-3105	42.55	-34.91	490
4400863	60211690	PSB	UP	744	-	-	X	X	X	-	-	X	-	-	-	T	0105-3105	27.34	-40.59	685
4400866	11793240	MSB	E2	744	-	-	X	X	X	-	-	X	-	-	-	T	0105-3105	57.12	-17.59	345
4400867	11593590	MSB	EU	744	-	-	X	X	X	-	-	X	-	-	-	T	0105-3105	56.01	-27.01	343
4400868	11794230	MSB	E2	744	-	-	X	X	X	-	-	X	-	-	-	T	0105-3105	30.07	-45.24	754
4400871	11790240	MSB	E2	744	-	-	X	X	X	-	-	X	-	-	-	T	0105-3105	45.74	-14.12	339
4400872	60202920	MSB	EU	744	-	-	X	X	X	-	-	X	-	-	-	T	0105-3105	52.55	-24.71	339
4400877	60526170	PSB	UP	735	-	-	X	X	X	-	-	X	-	-	-	T	0105-3105	34.79	-21.12	482
4400878	60528170	PSB	UP	725	-	-	X	X	X	-	-	X	-	-	-	T	0105-3105	46.66	-15.31	482
4400880	60656880	PSB	UP	576	-	-	X	X	X	-	-	X	-	-	-	T	0305-3105	44.86	-40.63	483
4400885	60218780	PSB	UP	731	-	-	X	X	X	-	-	X	-	-	-	T	0105-3105	39.63	-26.21	367
4400887	60251440	PSB	UP	731	-	-	X	X	X	-	-	X	-	-	-	T	0105-3105	36.97	-38.73	369
4400888	60359010	PSB	UP	734	-	-	X	X	X	-	-	X	-	-	-	T	0105-3105	43.39	-21.54	367
4400889	60202320	PSB	UP	731	-	-	X	X	X	-	-	X	-	-	-	T	0105-3105	34.04	-48.16	368
4400890	12000230	PSB	UP	727	-	-	X	X	X	-	-	X	-	-	-	T	0105-3105	29.76	-63.33	367
4400891	12007220	PSB	UP	730	-	-	X	X	X	-	-	X	-	-	-	T	0105-3105	27.13	-33.60	365
4400892	60018400	PSB	UP	730	-	-	X	X	X	-	-	X	-	-	-	T	0105-3105	47.77	-17.91	366
6200513	61665360	MSB	EU	744	-	-	X	X	X	-	-	X	-	-	-	T	0105-3105	58.78	-29.71	116
6200514	60203700	MSB	E2	744	-	-	X	X	X	-	-	X	-	-	-	T	0105-3105	68.86	-3.10	829
6200516	11475100	MSB	EU	744	-	-	X	X	X	-	-	X	-	-	-	T	0105-3105	22.51	-28.49	755
6200536	11599570	MSB	EU	744	-	-	X	X	X	-	-	X	-	-	-	T	0105-3105	59.07	2.90	357
6200538	11460700	MSB	UP	744	-	-	X	X	X	-	-	X	-	-	-	T	0105-3105	62.99	-9.04	356
6200539	60891140	MSB	EU	744	-	-	X	X	X	-	-	X	-	-	-	T	0105-3105	55.48	-18.71	269
6200552	11797240	MSB	E2	744	-	-	X	X	X	-	-	X	-	-	-	T	0105-3105	48.70	-17.67	234
6200553	11165650	MSB	EU	744	-	-	X	X	X	-	-	X	-	-	-	T	0105-3105	78.73	4.40	799
6200681	11168640	MSB	EU	744	-	-	X	X	X	-	-	X	-	-	-	T	0105-3105	32.65	-15.05	927
6200695	60408990	MSB	E2	743	-	-	X	X	X	-	-	X	-	-	-	T	0105-3105	25.97	-36.51	755
6200713	11246980	YSB	EU	727	-	-	X	X	X	-	-	X	-	-	-	T	0105-3105	29.21	-59.14	901
6200714	11240980	YSB	EU	738	-	-	X	X	X	-	-	X	-	-	-	T	0105-3105	29.66	-62.69	898
6200940	60203850	PSB	UP	729	-	-	X	X	X	-	-	X	-	-	-	T	0105-3105	35.31	-26.86	364
6200941	61516840	PSB	UP	729	-	-	X	X	X	-	-	X	-	-	-	T	0105-3105	32.73	-27.47	364
6300640	60172710	MSB	EU	744	-	-	X	X	X	-	-	X	-	-	-	T	0105-3105	72.79	37.24	656
6300644	61766070	MSB	EU	744	-	-	X	X	X	-	-	X	-	-	-	T	0105-3105	71.40	17.95	242
6400517	61619060	MSB	EU	644	-	-	X	X	X	-	-	X	-	-	-	T	0105-3105	59.53	0.59	201
6400518	60892150	MSB	EU	714	-	-	X	X	X	-	-	X	-	-	-	T	0105-3105	61.95	0.58	200
6400519	61518850	MSB	EU	744	-	-	X	X	X	-	-	X	-	-	-	T	0105-3105	65.37	4.51	134
6400520	11479040	MSB	EU	744	-	-	X	X	X	-	-	X	-	-	-	T	0105-3105	69.43	-9.01	751
6400521	11470030	MSB	EU	744	-	-	X	X	X	-	-	X	-	-	-	T	0105-3105	71.61	3.44	749
6400522	61511870	MSB	EU	744	-	-	X	X	X	-	-	X	-	-	-	T	0105-3105	74.14	11.81	282
6400523	61510870	MSB	EU	740	-	-	X	X	X	-	-	X	-	-	-	T	0105-3105	63.62	-2.67	204
6400524	61619040	MSB	EU	744	-	-	X	X	X	-	-	X	-	-	-	T	0105-3105	66.60	9.58	204

E-SURFMAR DB Monthly Report May 2015

6400525	60175710	MSB	EU	744	-	-	X	X	X	-	-	X	-	-	-	T	0105-3105	70.54	-8.91	653
6400526	61611070	MSB	EU	743	-	-	X	X	X	-	-	X	-	-	-	T	0105-3105	62.50	-17.63	202
6400527	61514840	MSB	EU	712	-	-	X	X	X	-	-	X	-	-	-	T	0105-3105	62.00	-22.39	201
6400606	61515870	MSB	EU	612	-	-	X	X	X	-	-	X	-	-	-	T	0105-3105	62.77	-0.97	130
6400613	60174710	MSB	EU	745	-	-	X	X	X	-	-	X	-	-	-	T	0105-3105	78.22	-1.71	638
6400614	60178700	MSB	EU	744	-	-	X	X	X	-	-	X	-	-	-	T	0105-3105	59.27	-20.31	634
6400615	60173700	MSB	EU	744	-	-	X	X	X	-	-	X	-	-	-	T	0105-3105	74.88	-8.80	569
6400620	60899130	MSB	EU	744	-	-	X	X	X	-	-	X	-	-	-	T	0105-3105	62.43	-11.07	65
6400621	61614070	MSB	EU	743	-	-	X	X	X	-	-	X	-	-	-	T	0105-3105	62.98	-19.27	64
6400622	60172810	MSB	EU	744	-	-	X	X	X	-	-	X	-	-	-	T	0105-3105	71.24	7.48	654
6400623	11470040	MSB	EU	744	-	-	X	X	X	-	-	X	-	-	-	T	0105-3105	75.55	-3.49	750
6400665	60171710	MSB	EU	744	-	-	X	X	X	-	-	X	-	-	-	T	0105-3105	78.08	7.90	550
6400666	60179710	MSB	EU	744	-	-	X	X	X	-	-	X	-	-	-	T	0105-3105	73.61	13.55	550
6400667	61615060	MSB	EU	712	-	-	X	X	X	-	-	X	-	-	-	T	0105-3105	60.83	-1.88	522
6400668	60177860	MSB	EU	744	-	-	X	X	X	-	-	X	-	-	-	T	0105-3105	74.53	-5.57	526
6400692	60172720	MSB	EU	744	-	-	X	X	X	-	-	X	-	-	-	T	0105-3105	70.38	8.42	465
6500596	61511850	MSB	EU	744	-	-	X	X	X	-	-	X	-	-	-	T	0105-3105	56.27	-46.35	347
6500599	62326370	MSB	EU	488	-	-	X	X	X	-	-	X	-	-	-	T	1105-3105	57.75	-49.30	22
6500600	62326360	MSB	EU	472	-	-	X	X	X	-	-	X	-	-	-	T	1205-3105	59.38	-49.41	21
6500601	62320360	MSB	EU	444	-	-	X	X	X	-	-	X	-	-	-	T	1305-3105	58.28	-48.04	19
6500602	62323360	MSB	EU	328	-	-	X	X	X	-	-	X	-	-	-	T	1805-3105	57.58	-48.90	19

Operating drifting AtlantOS buoys by the end of the month

WMO	Telcom	Typ	Ow	nobs	Wi	AT	AP	dP	ST	Wa	Ws	Dr	Sb	U	SS	O	Start_end	Lat	Lon	Age
1500681	61661310	MSB	EU	744	-	-	X	X	X	-	-	X	-	-	-	T	0105-3105	-12.16	-1.76	44
1500682	61663300	MSB	EU	744	-	-	X	X	X	-	-	X	-	-	-	T	0105-3105	-9.80	-3.57	45
1500683	61663370	MSB	EU	744	-	-	X	X	X	-	-	X	-	-	-	T	0105-3105	-7.20	-14.63	46
1500684	62328350	MSB	EU	744	-	-	X	X	X	-	-	X	-	-	-	T	0105-3105	-6.69	-8.02	45

Drifting buoys which ceased to be operational

WMO	Telcom	Typ	Ow	End_Date	Lat	Lon	Age	Cause
6200551	60897120	MSB	EU	20150512	60.5	-1.6	250	Ashore in Shetland Island
6200677	61663310	MSB	EU	20150512	61.5	-28.8	59	Unknown
6200687	11349100	YSB	EU	20150502	75.8	-4.7	877	Unknown
6400669	60177710	MSB	EU	20150507	65.0	-23.1	498	Ashore in Iceland
6500598	11792240	MSB	E2	20150518	52.9	-9.5	328	Ashore in Ireland

Non-operating drifting buoys reporting GTS data

WMO	Telcom	Typ	Ow	nobs	Wi	AT	AP	dP	ST	Wa	Ws	Dr	Sb	U	SS	O	Start_end	Lat	Lon	Age
2500624	60247420	MSB	EU	744	-	-	-	-	X	-	-	X	-	-	-	T	0105-3105	62.69	-8.65	639
2500652	60176700	MSB	EU	744	-	-	-	-	X	-	-	X	-	-	-	T	0105-3105	82.34	23.51	627
4400604	11794240	MSB	E2	744	-	-	-	-	X	-	-	X	-	-	-	T	0105-3105	45.69	-43.37	236
4400608	11093800	MSB	E2	744	-	-	S	S	X	-	-	X	-	-	-	T	0105-3105	42.14	-21.66	234
6500595	11595570	MSB	EU	744	-	-	-	-	X	-	-	X	-	-	-	T	0105-3105	54.89	-43.43	349

Non-operating drifting buoys which ceased to emit

WMO	Telcom	Typ	Ow	End_Date	Lat	Lon	Age	Cause
6300641	61665210	MSB	EU	20150516	71.9	3.6	228	Unknown

E-SURFMAR DB Monthly Report May 2015

Other operating drifting buoys inside the EUMETNET area by the end of the month

WMO	Telcom	Typ	Ow	nobs	Wi	AT	AP	dP	ST	Wa	Ws	Dr	Sb	U	SS	O	Start_end	Lat	Lon
1300515	114951	AOML		713	-	-	X	-	X	-	-	X	-	-	-	L	0105-3105	22.17	-40.74
1300517	114943	AOML		704	-	-	X	-	X	-	-	X	-	-	-	L	0105-3105	14.07	-34.32
1300519	127004	AOML		729	-	-	X	X	X	-	-	X	-	-	-	L	0105-3105	16.94	-33.35
1300523	114877	AOML		713	-	-	X	-	X	-	-	X	-	-	-	L	0105-3105	12.21	-53.79
1300525	127003	AOML		732	-	-	X	X	X	-	-	X	-	-	-	L	0105-3105	7.94	-50.57
1300530	114916	AOML		720	-	-	X	-	X	-	-	X	-	-	-	L	0105-3105	8.16	-31.14
1300531	114921	AOML		677	-	-	X	-	X	-	-	X	-	-	-	L	0105-3105	14.45	-44.59
1300569	114880	AOML		708	-	-	X	-	X	-	-	X	-	-	-	L	0105-3105	30.14	-29.46
1300570	116474	AOML		739	-	-	X	-	X	-	-	X	-	-	-	L	0105-3105	36.19	-24.35
1300572	127002	AOML		739	-	-	X	X	X	-	-	X	-	-	-	L	0105-3105	33.05	-31.55
1300590	139285	AOML		739	-	-	X	X	X	-	-	X	-	-	-	L	0105-3105	32.49	-20.79
1300633	109491	AOML		742	-	-	X	X	X	-	-	X	-	-	-	L	0105-3105	36.14	-30.62
1300659	11910180	UKMO		744	-	-	X	X	X	-	-	X	-	-	-	T	0105-3105	29.10	-54.41
1300660	11022040	UKMO		744	-	-	X	X	X	-	-	X	-	-	-	T	0105-3105	30.68	-48.28
1300661	62325770	UKMO		744	-	-	X	X	X	-	-	X	-	-	-	T	0105-3105	11.54	-27.94
1300662	11098800	UKMO		744	-	-	X	X	X	-	-	X	-	-	-	T	0105-3105	28.64	-47.12
1500951				724	-	-	X	X	X	-	-	X	-	-	-	T	0105-3105	3.99	-14.00
2100942	119223	UKMO		737	-	-	X	X	X	-	-	X	-	-	-	L	0105-3105	27.32	-32.57
2500540		APL		744	-	-	X	X	X	-	-	-	-	-	-	L	0105-3105	84.37	-21.17
2500575				745	-	-	X	X	X	-	-	-	-	-	-	L	0105-3105	85.06	-26.56
2600537	61369210	PSC		84	-	-	X	X	X	-	-	X	-	-	-	O	2805-3105	77.45	0.39
3100515				719	-	-	X	-	X	-	-	X	-	-	-	L	0105-3105	15.09	-58.27
3100717	61614160	CMM		744	-	-	X	X	X	-	-	X	-	-	-	T	0105-3105	18.37	-60.95
3100719				735	-	-	X	X	X	-	-	X	-	-	X	T	0105-3105	4.55	-13.35
3100720				1452	-	-	X	X	X	-	-	X	-	-	X	T	0105-3105	4.97	-12.83
3100863	61611040	CMM		744	-	-	X	X	X	-	-	X	-	-	-	T	0105-3105	17.63	-55.82
4100564	109221	AOML		731	-	-	X	-	X	-	-	X	-	-	-	L	0105-3105	33.22	-34.06
4100580	132677	AOML		731	-	-	X	X	X	-	-	X	-	-	-	L	0105-3105	17.80	-45.42
4100590	132676	AOML		741	-	-	X	X	X	-	-	X	-	-	-	L	0105-3105	21.39	-66.79
4100591	132678	AOML		730	-	-	X	X	X	-	-	X	-	-	-	L	0105-3105	16.53	-51.60
4100594	127029	AOML		741	-	-	X	X	X	-	-	X	-	-	-	L	0105-3105	23.06	-52.83
4100596	11473050	EUME		744	-	-	X	X	X	-	-	X	-	-	-	T	0105-3105	23.78	-61.22
4100597	61512840	AOML		744	-	-	X	X	X	-	-	X	-	-	-	T	0105-3105	23.35	-59.78
4100600	61618040	AOML		744	-	-	X	X	X	-	-	X	-	-	-	T	0105-3105	16.87	-60.11
4100632	11474050	EUME		744	-	-	X	X	X	-	-	X	-	-	-	T	0105-3105	26.42	-64.44
4100705	11596570	AOML		744	-	-	X	X	X	-	-	X	-	-	-	T	0105-3105	33.53	-54.25
4100706	11595580	AOML		744	-	-	X	X	X	-	-	X	-	-	-	T	0105-3105	26.73	-61.51
4100711	11477030	EUME		744	-	-	X	X	X	-	-	X	-	-	-	T	0105-3105	30.46	-49.11
4100739	11912120	UKMO		720	-	-	X	X	X	-	-	X	-	-	-	T	0105-3005	32.83	-69.98
4100933	101721	AOML		742	-	-	X	X	X	-	-	X	-	-	-	L	0105-3105	36.28	-43.00
4100936	109488	AOML		743	-	-	X	X	-	-	-	X	-	-	-	L	0105-3105	30.91	-53.00
4100975	109439	AOML		742	-	-	X	X	X	-	-	X	-	-	-	L	0105-3105	36.86	-40.35
4400505	98087	ICEP		1505	-	-	X	X	X	-	-	-	-	-	-	L	0105-3105	41.27	-12.77
4400509				1359	-	-	X	X	X	-	-	-	-	-	-	L	0605-3105	46.85	-52.18
4400510				1308	-	-	X	X	X	-	-	-	-	-	-	L	0605-3105	47.43	-50.37
4400516	114599	AOML		701	-	-	X	X	X	-	-	X	-	-	-	L	0105-3105	32.99	-69.04
4400558	123286	AOML		742	-	-	X	X	X	-	-	X	-	-	-	L	0105-3105	34.71	-41.44
4400560	126480	AOML		744	-	-	X	X	-	-	-	X	-	-	-	L	0105-3105	47.63	-27.47
4400896	109438	AOML		741	-	-	X	X	X	-	-	X	-	-	-	L	0105-3105	29.94	-42.53
4700503		APL		746	-	-	X	X	X	-	-	-	-	-	-	L	0105-3105	69.51	-22.44
4700586	11541440	EC		739	-	-	X	X	X	-	-	X	-	-	-	O	0105-3105	53.34	-43.64
4800506	60835100	EC		704	-	X	X	X	-	-	-	X	-	-	-	O	0105-3105	83.83	-68.46
4800568	61363210	PSC		739	-	-	X	X	X	-	-	X	-	-	-	O	0105-3105	62.44	-39.83
4800597	100009	PSC		1125	X	X	X	-	-	-	-	X	-	-	-	O	0105-3105	83.09	-19.78
4800679				700	-	-	X	X	X	-	-	X	-	-	-	T	0105-3105	85.84	-31.86
4800778	60894080	EC		739	-	-	X	X	X	-	-	-	-	-	-	O	0105-3105	74.16	-18.87
4800779	60890090	EC		738	-	X	X	X	-	-	-	-	-	-	-	O	0105-3105	66.15	-34.00
6300546	61361200	PSC		738	-	-	X	X	X	-	-	X	-	-	-	O	0105-3105	67.21	-9.17
6400532				744	-	-	X	X	X	-	-	-	-	-	-	L	0105-3105	57.80	-43.35
6400534				744	-	-	X	X	X	-	-	-	-	-	-	L	0105-3105	61.91	-31.50
6400535				744	-	-	X	X	X	-	-	-	-	-	-	L	0105-3105	66.25	-34.85
6400546				744	-	-	X	X	X	-	-	X	-	-	-	T	0105-3105	58.85	-38.82

Abbreviations

WMO : WMO id.
 Argos : Argos id.
 Typ : Buoy type
 - first character : Manufacturer (C = ConMar , M = Metocean, P = Pacific Gyre
 T = Technocean, Y = Marlin-Yug...)
 - second character : Main type (F = FGGE, I = ICEB, S = SVP)
 - third character : Sub type (B = barometer buoy, W = Wind buoy,
 S = Salinity buoy)

Ow : Buoy owner (country code or EU for EUCOS, E2 for HRSST-2 buoys, UP for upgraded buoys)
 Owner : Buoy owner for non EUCOS buoys
 Nobs : number of GTS reports received at Meteo-France
 Parameters (X = OK, S = stopped, - = not measured) :
 Wi : Wind
 AT : Air Temperature
 AP : Air Pressure
 dP : Air pressure tendency
 ST : Sea surface Temperature
 Wa : Wave period and height
 Ws : Wave spectra
 Dr : Drogue presence
 Sb : Subsurface temperature
 U : Relative humidity
 SS : Sea surface Salinity

O : Origin of the reports (T = Argos Toulouse, L = Argos Largo, O = Other)
 Start_end : first and last dates of the month for which GTS data were received at Meteo-France
 Lat : Latitude of the latest position
 Lon : Longitude of the latest position
 Age : Age of the buoy (days)

DepDate : Date of deployment
 DepLat : Latitude of deployment
 Dep Lon : Longitude of Deployment
 From : Harbour of departure

Definition : An operating drifting buoy is a buoy providing at least air pressure or wind (direction and velocity) data.

MOORED BUOYS

Former EGOS stations (K-pattern and Hydrosphere)

WMO	Name	nobs	Wi	AT	AP	dP	ST	Wa	Ws	Dr	Sb	U	SS	O	Start_end	Lat	Lon
6100001	Cote d'Azur	743	X	X	X	X	X	-	X	-	-	X	-	T	0105-3105	43.40	7.80
6100002	Lion	733	X	X	X	X	X	-	X	-	-	X	-	T	0105-3105	42.10	4.70
6200001	Gascogne	744	X	X	X	X	X	X	-	-	-	X	-	O	0105-3105	45.30	-5.00
6200029	K1	735	X	X	X	-	X	X	-	-	-	X	-	O	0105-3105	48.70	-12.50
6200081	K2	655	X	X	X	X	X	X	-	-	-	-	-	O	0405-3105	51.00	-13.20
6200090	M1	-	-	-	-	-	-	-	-	-	-	-	-	-	-	53.10	-11.20
6200091	M2	741	X	X	X	-	X	X	-	-	-	X	-	O	0105-3105	53.50	-5.40
6200092	M3	742	X	X	X	-	S	X	-	-	-	X	-	O	0105-3105	51.20	-10.50
6200093	M4	741	X	X	X	-	X	-	-	-	-	-	-	O	0105-3105	54.70	-9.10
6200094	M5	740	X	X	X	-	X	X	-	-	-	X	-	O	0105-3105	51.70	-6.70
6200095	M6	805	X	X	X	X	X	X	-	-	-	X	-	O	0105-3105	53.10	-15.90
6200105	K4	-	-	-	-	-	-	-	-	-	-	-	-	-	-	55.80	-11.40
6200108	K3	-	-	-	-	-	-	-	-	-	-	-	-	-	-	53.50	-19.50
6200163	Brittany	743	X	X	X	X	X	X	X	-	-	X	-	O	0105-3105	47.50	-8.40
6400045	K5	654	-	X	X	X	X	X	-	-	-	X	-	O	0405-3105	59.10	-11.70
6400046	K7	743	X	-	X	-	-	X	-	-	-	-	-	O	0105-3105	60.70	-5.20

Comments:
 - EUMETNET moored buoys are presented in bold characters.

E-SURFMAR DB Monthly Report May 2015

----- Former EGOS moored buoys (Spanish SeaWatch and WaveScan)

WMO	Name	nobs	Wi	AT	AP	dP	ST	Wa	Ws	Dr	Sb	U	SS	O	Start_end	Lat	Lon
1300130	Gran Canaria	742	X	X	X	-	-	X	X	-	-	-	-	O	0105-3105	28.18	-15.82
1300131	Tenerife Sur		-	-	-	-	-	-	-	-	-	-	-			28.00	-16.58
6100196	C. Begur		-	-	-	-	-	-	-	-	-	-	-			41.92	3.65
6100197	Mahon	743	X	X	X	-	-	X	X	-	-	-	-	O	0105-3105	39.72	4.42
6100198	C. de Gata	744	X	X	X	-	X	X	X	-	-	-	X	O	0105-3105	36.57	-2.33
6100280	Tarragona	744	X	X	X	-	X	X	X	-	-	-	X	O	0105-3105	40.77	1.47
6100281	Valencia	695	X	X	X	-	X	X	X	-	-	-	X	O	0105-3105	39.47	-0.27
6100417	C. de Palos	744	X	X	X	-	X	X	X	-	-	-	X	O	0105-3105	37.65	-0.32
6100430	Dragonera	743	X	X	X	-	X	X	X	-	-	-	-	O	0105-3105	39.56	2.11
6200024	Bilbao-Visc.	744	X	X	X	-	X	X	X	-	-	-	X	O	0105-3105	43.63	-3.03
6200025	C. de Penas	743	X	X	X	-	X	X	X	-	-	-	X	O	0105-3105	43.73	-6.17
6200082	E. de Bares	743	X	X	X	-	X	X	X	-	-	-	X	O	0105-3105	44.13	-7.69
6200083	Villano-Sis.		-	-	-	-	-	-	-	-	-	-	-			43.48	-9.22
6200084	C. Silleiro	743	X	X	X	-	X	X	X	-	-	-	X	O	0105-3105	42.12	-9.43
6200085	G. de Cadiz	743	X	X	X	-	X	X	X	-	-	-	X	O	0105-3105	36.48	-6.97
6201030	Santander		-	-	-	-	-	-	-	-	-	-	-			43.84	-3.77

Comments:

- The EUMETNET buoy is presented in bold characters.

----- Operating POSEIDON moored buoys (Greece)

WMO	Name	nobs	Wi	AT	AP	dP	ST	Wa	Ws	Dr	Sb	U	SS	O	Start_end	Lat	Lon
6101000			-	-	-	-	-	-	-	-	-	-	-			39.10	24.50
6101001		129	S	S	S	-	-	S	-	-	-	-	-		0105-2005	37.60	23.60
6101002			-	-	-	-	-	-	-	-	-	-	-			27.00	22.10
6101003		239	X	-	X	-	-	X	-	-	-	-	-	O	0105-3105	40.00	24.70
6101004			-	-	-	-	-	-	-	-	-	-	-			39.10	25.80
6101005			-	-	-	-	-	-	-	-	-	-	-			37.50	25.50
6101006			-	-	-	-	-	-	-	-	-	-	-			36.30	25.50
6101007		247	X	X	X	-	-	X	-	-	-	-	-	O	0105-3105	35.80	24.90
6101008		202	X	X	X	-	-	X	-	-	-	-	-	O	0105-3105	36.80	21.60
6101009			-	-	-	-	-	-	-	-	-	-	-			38.00	20.60

----- Other European moored buoys (operated by 3rd parties)

WMO	Name	nobs	Wi	AT	AP	dP	ST	Wa	Ws	Dr	Sb	U	SS	O	Start_end	Lat	Lon
1200050	Cycofos		-	-	-	-	-	-	-	-	-	-	-			33.60	31.90
6100010	Italia-1		-	-	-	-	-	-	-	-	-	-	-			43.80	9.10
6200027	Jersey	250	X	-	X	X	-	X	-	-	-	-	-	O	0105-3105	49.08	-22.20
6200030	L4	732	S	X	X	-	-	-	-	-	-	X	-	O	0105-3105	50.25	-4.22
6200050	E1		-	-	-	-	-	-	-	-	-	-	-			50.04	-4.37
6200086	NSB II		-	-	-	-	-	-	-	-	-	-	-			55.00	6.40
6200087	NSB III		-	-	-	-	-	-	-	-	-	-	-			54.70	6.80
6200191	Porto	714	X	X	X	-	-	X	-	-	-	-	-	O	0105-3105	41.15	-9.57
6200192	Peniche		-	-	-	-	-	-	-	-	-	-	-			39.50	-9.65
6200303	Turbo Bank	744	X	X	X	X	X	X	-	-	-	X	-	O	0105-3105	51.60	-5.10
6200442	PAP	751	X	-	-	-	-	-	-	-	-	-	-	O	0105-3105	49.00	-16.40
6600021	Arkona Becken	534	X	X	-	-	X	X	-	-	-	-	-	O	0105-3105	54.90	13.90
6600022	Oder Bank	112	S	S	-	-	S	-	-	-	-	-	-		1205-1905	54.10	14.20
6600024	Darsser Schwelle	618	X	X	-	-	X	X	-	-	-	-	-	O	0105-3105	54.70	12.70

----- Other offshore moored buoys inside the EUMETNET area

WMO	Name	nobs	Wi	AT	AP	dP	ST	Wa	Ws	Dr	Sb	U	SS	O	Start_end	Lat	Lon
1300001		545	X	X	X	-	X	-	-	-	-	X	X	L	0105-3105	11.47	-23.00
1300008		469	X	X	X	-	X	-	-	-	-	X	-	L	0105-3105	14.98	-38.02
1300308	East Atlantic		-	-	-	-	-	-	-	-	-	-	-			15.00	-38.00

**E-SURFMAR DB Monthly Report
May 2015**

4100026	408	X	X	-	-	-	-	-	-	X	-	L	0105-3105	11.49	-38.40
4100040 West Atlantic	756	X	X	X	X	X	X	-	-	X	-	O	0105-3105	14.50	-53.00
4100041 Mid. Atlantic	751	X	X	X	X	X	X	-	-	X	-	O	0105-3105	14.50	-46.00
4100043 Porto Rico	768	X	X	X	X	X	X	-	-	X	-	O	0105-3105	21.00	-65.00
4100044	769	X	X	X	X	X	X	-	-	X	-	O	0105-3105	21.70	-58.70
4100046	774	X	X	X	X	X	X	-	-	X	-	O	0105-3105	23.90	-70.90
4100047	-	-	-	-	-	-	-	-	-	-	-	-	-	27.50	-71.50
4100048	769	X	X	X	X	X	X	-	-	X	-	O	0105-3105	32.00	-69.60
4100049	775	X	X	X	X	X	X	-	-	X	-	O	0105-3105	27.50	-53.00
4100139	601	X	X	X	-	X	-	-	-	X	-	L	0105-3105	20.02	-37.86
4100300 Antilles	703	X	X	X	X	X	-	-	-	X	-	T	0105-3105	15.85	-57.47
4200059 Caraibes	168	X	X	X	X	X	X	-	-	X	-	O	2505-3105	15.00	-67.50
4400008 A Nantucket	775	X	X	X	X	X	X	-	-	X	-	O	0105-3105	40.50	-69.40
4400011 D Georges Bk	769	X	X	X	X	X	X	-	-	X	-	O	0105-3105	41.10	-66.60
4400018 SE Cape Cod	775	X	X	X	X	X	X	-	-	X	-	O	0105-3105	41.30	-69.30
4400024 NNE Channel	719	X	X	X	-	X	X	-	-	-	-	O	0105-3105	42.30	-65.90
4400137 E Scotia Sl.	742	X	X	X	X	X	X	-	-	-	-	O	0105-3105	42.30	-62.00
4400138 SW Gd Banks	-	-	-	-	-	-	-	-	-	-	-	-	-	44.30	-53.60
4400139 Beanquereau	741	X	X	X	X	X	X	-	-	-	-	O	0105-3105	44.30	-57.10
4400140 Tail of Bk	-	-	-	-	-	-	-	-	-	-	-	-	-	43.80	-51.70
4400141 Larentian F	739	X	X	X	X	X	X	-	-	-	-	O	0105-3105	43.00	-58.00
4400150 La Have Bk	721	X	X	X	X	X	X	-	-	-	-	O	0105-3105	42.50	-64.00

E-SURFMAR DB Monthly Report May 2015

Buoy-QC statistics from Meteo-France model outputs

Datend : Date of the last value received on GTS
Recvd : Total number of values received on GTS
GE : Number of Gross Errors (excluded from bias and sd computations)
bias : Mean differences between observation values and co-located model output values
Std : Standard deviation of differences

Air Pressure (hPa), drifting buoys, May 2015

Datend	WMO	Telcom	Recvd	GE	Bias	Std
20150531	1300868	11686410	308	0	0.4	0.3
20150531	1300869	11688410	744	0	0.1	0.3
20150530	1300870	61512860	658	0	0.2	0.7
20150531	1300871	61516870	744	0	0.7	0.3
20150531	1300872	61611050	744	0	0.6	0.4
20150531	1500681	61661310	744	0	0.8	0.8
20150531	1500682	61663300	744	0	0.5	0.8
20150531	1500683	61663370	744	0	0.7	0.6
20150531	1500684	62328350	744	0	-0.7	1.1
20150531	2500616	61762070	744	10	0.4	0.8
20150531	2500617	61767070	744	0	-0.1	0.3
20150531	2500618	11020180	744	0	0.3	0.3
20150531	2500620	61760090	744	0	0.1	0.3
20150531	4100729	62321360	102	0	0.4	0.5
20150531	4100730	62326350	67	0	0.4	0.5
20150531	4100731	62329360	219	0	0.5	0.5
20150531	4100969	60213780	744	0	-0.3	0.5
20150531	4100970	60213790	744	0	0.3	0.5
20150531	4100971	60215900	744	0	-0.0	0.3
20150531	4100972	60217780	731	0	0.2	0.8
20150531	4400513	61475450	742	0	0.4	0.4
20150531	4400515	61476450	744	0	0.2	0.6
20150531	4400517	61477390	744	0	0.2	0.4
20150531	4400546	11160640	744	0	-0.1	0.3
20150531	4400547	60173710	744	0	0.2	0.5
20150531	4400548	11799230	744	0	0.3	0.4
20150531	4400549	60896130	744	0	0.2	0.6
20150531	4400550	60894140	744	0	0.1	0.6
20150531	4400551	60892140	744	0	0.1	0.5
20150531	4400601	60890150	744	0	-0.2	0.6
20150531	4400602	11468700	733	0	-0.1	0.5
20150531	4400606	11162640	744	0	0.1	0.5
20150519	4400608	11093800	164	21	-0.0	1.5
20150531	4400609	61613050	744	0	0.4	0.5
20150531	4400612	61511880	720	0	-0.2	0.6
20150531	4400613	11475040	744	0	-0.3	0.4
20150531	4400614	61661340	731	0	0.0	0.6
20150531	4400620	61667370	744	0	0.1	0.4
20150531	4400621	61519840	744	0	0.4	0.6
20150531	4400622	61668320	528	0	-0.4	0.5
20150531	4400623	61669330	744	0	-0.2	0.4
20150531	4400624	11341110	731	0	-0.1	0.4
20150531	4400625	61668340	630	0	0.3	0.4
20150531	4400725	11027170	744	0	0.1	0.6
20150531	4400739	61516840	744	0	0.8	0.5
20150531	4400740	11883820	744	0	-0.2	0.5
20150531	4400760	61662360	744	0	-0.3	0.5
20150531	4400761	61669320	744	0	-0.3	0.5
20150531	4400762	61664310	744	0	0.5	0.6
20150531	4400763	61667330	741	0	0.2	0.5
20150531	4400764	61662330	744	0	-0.3	0.6
20150531	4400768	62322360	200	0	0.7	0.5
20150531	4400769	62328360	225	0	0.4	0.6
20150531	4400773	60211790	690	0	0.2	0.7
20150531	4400774	61477400	743	0	0.4	0.5
20150531	4400775	61476400	742	0	0.5	0.7
20150531	4400776	61474410	744	0	0.5	0.4
20150531	4400778	61475430	743	0	0.4	0.4
20150531	4400835	60218770	729	0	-0.2	0.3
20150531	4400836	60218680	729	0	0.1	0.5
20150531	4400837	60209590	730	0	0.1	0.4

E-SURFMAR DB Monthly Report May 2015

20150531	4400839	60205090	728	0	-0.0	0.4
20150531	4400846	60441290	726	0	0.5	0.4
20150531	4400847	60442280	732	0	0.4	0.4
20150531	4400848	60448280	730	0	0.2	0.4
20150531	4400863	60211690	744	0	-0.2	0.3
20150531	4400866	11793240	744	0	-0.3	0.4
20150531	4400867	11593590	744	0	-0.2	0.5
20150531	4400868	11794230	744	0	0.1	0.6
20150531	4400871	11790240	744	0	0.1	0.4
20150531	4400872	60202920	744	0	-0.3	0.4
20150531	4400877	60526170	735	0	-0.1	0.4
20150531	4400878	60528170	725	0	0.1	0.4
20150531	4400880	60556880	577	1	-0.2	0.4
20150531	4400885	60218780	731	0	-0.0	0.3
20150531	4400887	60251440	731	0	0.1	0.4
20150531	4400888	60359010	734	0	-0.1	0.4
20150531	4400889	60202320	731	0	-0.1	0.4
20150531	4400890	12000230	727	0	0.1	0.5
20150531	4400891	12007220	730	0	-0.0	0.3
20150531	4400892	60018400	730	0	-0.1	0.5
20150531	6200513	61665360	744	0	0.2	0.4
20150531	6200514	60203700	744	0	0.1	0.3
20150531	6200516	11475100	744	0	0.4	0.3
20150531	6200536	11599570	744	0	-0.4	0.5
20150531	6200538	11460700	744	8	-0.2	1.0
20150531	6200539	60891140	744	0	0.1	0.5
20150512	6200551	60897120	280	10	-0.3	0.8
20150531	6200552	11797240	744	0	0.1	0.5
20150531	6200553	11165650	744	0	0.1	0.5
20150512	6200677	61663310	287	0	0.4	0.4
20150531	6200681	11168640	744	0	-0.1	0.4
20150502	6200687	11349100	35	0	-0.3	0.3
20150531	6200695	60408990	743	0	0.3	0.3
20150531	6200713	11246980	727	0	-0.2	0.6
20150531	6200714	11240980	738	0	-0.2	0.5
20150531	6200940	60203850	729	0	0.1	0.3
20150531	6200941	60207590	729	0	-0.1	0.3
20150531	6300640	60172710	744	0	0.0	0.4
20150531	6300644	61766070	744	0	-0.4	0.3
20150531	6400517	61619060	644	0	0.3	0.6
20150531	6400518	60892150	714	0	-0.1	0.5
20150531	6400519	61518850	744	0	0.2	0.4
20150531	6400520	11479040	744	0	-0.2	0.4
20150531	6400521	11470030	744	0	-0.1	0.3
20150531	6400522	61511870	744	0	-0.1	0.3
20150531	6400523	61510870	740	0	0.1	0.6
20150531	6400524	61619040	744	0	-0.2	0.4
20150531	6400525	60175710	744	0	0.2	0.3
20150531	6400526	61611070	743	0	0.1	0.4
20150531	6400527	61514840	712	0	0.6	0.4
20150531	6400606	61515870	612	0	0.6	0.6
20150531	6400613	60174710	745	0	0.0	0.5
20150531	6400614	60178700	744	0	-0.0	0.4
20150531	6400615	60173700	744	10	-0.2	2.6
20150531	6400620	60899130	744	0	0.1	0.4
20150531	6400621	61614070	743	0	0.2	0.5
20150531	6400622	60172810	744	0	0.0	0.2
20150531	6400623	11470040	744	1	-0.6	1.5
20150531	6400665	60171710	744	0	0.2	0.3
20150531	6400666	60179710	744	0	0.3	0.2
20150531	6400667	61615060	712	0	-0.1	0.5
20150531	6400668	60177860	744	0	0.2	1.2
20150507	6400669	60177710	159	0	0.5	0.3
20150531	6400692	60172720	744	0	0.3	0.3
20150531	6500596	61511850	744	0	0.5	0.5
20150518	6500598	11792240	432	0	-0.0	1.0
20150531	6500599	62326370	488	0	0.1	0.6
20150531	6500600	62326360	472	0	-0.3	0.5
20150531	6500601	62320360	444	0	-0.1	0.5
20150531	6500602	62323360	328	0	-0.4	0.6

E-SURFMAR DB Monthly Report May 2015

Air Pressure (hPa), moored buoys, May 2015

Datend	WMO	Telcom	Recvd	GE	Bias	Std
20150531	1300130		742	0	0.7	0.6
20150531	6100001		742	1	-0.9	0.5
20150531	6100002		723	0	0.3	0.5
20150531	6100197		743	0	-0.4	0.6
20150531	6100198		744	0	0.4	0.7
20150531	6100280		744	0	0.5	0.6
20150531	6100281		695	0	0.6	0.7
20150531	6100417		744	0	1.0	0.6
20150531	6100430		743	0	0.6	0.6
20150520	6101001		129	0	0.7	0.6
20150531	6101003		239	0	1.0	0.7
20150531	6101007		247	0	0.2	0.6
20150531	6101008		201	0	0.5	0.7
20150531	6200001		744	0	0.2	0.5
20150531	6200024		744	0	0.5	0.6
20150531	6200025		743	0	0.6	0.7
20150531	6200027		246	0	0.1	0.5
20150531	6200029		735	0	0.3	0.5
20150531	6200030		732	0	0.0	0.5
20150531	6200081		655	0	0.1	0.7
20150531	6200082		743	0	0.5	0.7
20150531	6200084		743	0	0.7	0.7
20150531	6200085		743	0	0.3	0.6
20150531	6200091		741	3	-0.2	0.5
20150531	6200092		742	1	0.0	0.5
20150531	6200093		741	0	0.1	0.5
20150531	6200094		740	0	-0.1	0.6
20150531	6200095		742	0	-0.1	0.5
20150531	6200163		743	0	0.1	0.5
20150531	6200191		714	0	0.1	0.6
20150531	6200303		744	0	0.2	0.5
20150531	6400045		638	0	0.1	0.4
20150531	6400046		743	0	0.2	0.4

Air Temperature (C), moored buoys, May 2015

Datend	WMO	Telcom	Recvd	GE	Bias	Std
20150531	1300130		742	0	-0.1	0.5
20150531	6100001		740	0	-0.0	0.8
20150531	6100002		732	0	-0.1	0.8
20150531	6100197		743	0	2.2	1.9
20150531	6100198		744	0	0.5	1.1
20150531	6100280		744	0	0.6	1.3
20150531	6100281		692	0	0.0	0.9
20150531	6100417		744	0	0.3	0.6
20150531	6100430		743	0	0.9	0.7
20150520	6101001		129	0	0.1	0.9
20150531	6101007		247	0	1.0	1.0
20150531	6101008		201	0	-0.1	0.9
20150531	6200001		744	0	0.1	0.5
20150531	6200024		743	0	0.4	0.8
20150531	6200025		743	0	0.3	0.6
20150531	6200029		735	0	0.2	0.5
20150531	6200030		732	0	-0.4	0.5
20150531	6200081		655	0	-0.1	0.4
20150531	6200082		743	0	0.1	0.5
20150531	6200084		743	0	-0.3	0.8
20150531	6200085		743	0	0.3	0.8
20150531	6200091		741	0	0.1	0.5
20150531	6200092		742	0	-0.1	0.5
20150531	6200093		741	0	0.0	0.4
20150531	6200094		740	0	0.0	0.4
20150531	6200095		742	0	-0.7	0.7
20150531	6200163		655	0	0.1	0.6
20150531	6200191		714	0	-0.4	0.7
20150531	6200303		656	0	-0.1	0.4
20150531	6400045		654	0	-0.3	0.5
20150531	6600021		533	1	0.3	0.6
20150519	6600022		112	0	0.5	1.0
20150531	6600024		617	0	0.5	0.7

E-SURFMAR DB Monthly Report May 2015

Wind direction (deg.), moored buoys, May 2015

Datend	WMO	Telcom	Recvd	GE	Bias	Std
20150531	1300130		734	16	15	15
20150531	6100001		731	88	-9	35
20150531	6100002		726	43	0	25
20150531	6100197		737	24	-13	23
20150531	6100198		597	8	2	23
20150531	6100280		632	29	-7	32
20150531	6100281		671	74	9	39
20150531	6100430		740	45	-11	31
20150520	6101001		128	16	-6	43
20150531	6101003		239	46	-10	48
20150531	6101007		246	17	-12	26
20150531	6101008		201	7	2	28
20150531	6200001		742	3	-3	19
20150531	6200024		711	31	92	29
20150531	6200025		739	35	2	28
20150531	6200027		201	5	3	30
20150531	6200029		735	1	0	13
20150513	6200030		295	0	-77	18
20150531	6200081		655	3	0	18
20150531	6200082		740	6	-4	18
20150531	6200084		734	5	-2	16
20150531	6200085		732	36	-3	26
20150531	6200091		741	12	1	18
20150531	6200092		742	1	5	15
20150531	6200093		741	6	6	14
20150531	6200094		740	7	-1	16
20150531	6200095		647	4	-5	13
20150531	6200163		742	6	1	16
20150531	6200191		705	18	-2	18
20150531	6200303		743	8	-1	21
20150531	6200442		744	4	-1	14
20150531	6400046		741	0	3	15
20150531	6600021		530	1	-3	20
20150519	6600022		111	0	-5	16
20150531	6600024		618	4	-0	18

Wind speed rate, moored buoys, May 2015

Datend	WMO	Telcom	Recvd	GE	Rate	Err
20150531	1300130		734	0	0.9	2.0
20150531	6100001		731	6	1.5	2.0
20150531	6100002		726	21	0.9	3.0
20150531	6100197		737	0	1.1	1.5
20150531	6100198		597	0	0.8	1.9
20150531	6100280		632	0	1.1	1.8
20150531	6100281		671	0	1.4	1.8
20150531	6100430		740	0	1.4	1.6
20150520	6101001		128	0	1.2	2.4
20150531	6101003		239	0	0.8	2.9
20150531	6101007		246	0	1.0	2.0
20150531	6101008		201	0	0.9	1.9
20150531	6200001		742	0	1.0	1.4
20150531	6200024		711	28	1.0	1.7
20150531	6200025		739	0	0.9	2.0
20150531	6200027		201	0	1.0	1.3
20150531	6200029		735	0	1.0	1.2
20150513	6200030		295	38	1.0	1.5
20150531	6200081		655	0	1.0	1.4
20150531	6200082		740	0	0.9	1.4
20150531	6200084		734	1	0.9	1.3
20150531	6200085		732	0	0.9	2.0
20150531	6200091		741	0	1.0	1.9
20150531	6200092		742	0	1.0	1.4
20150531	6200093		741	0	1.0	1.3
20150531	6200094		740	0	1.0	1.5
20150531	6200095		647	0	1.0	1.1
20150531	6200163		742	0	1.1	1.5
20150531	6200191		705	39	0.0	0.0

E-SURFMAR DB Monthly Report May 2015

20150531	6200303	743	0	1.0	1.5
20150531	6200442	744	0	1.0	1.3
20150531	6400046	741	0	1.0	1.3
20150531	6600021	530	0	1.1	1.2
20150519	6600022	111	1	1.2	1.3
20150531	6600024	618	0	1.1	1.2

Comments on QC statistics :

Air pressure

1. Pressure measurements were rehabilitated in May for buoys WMO **4400608** but the GTS transmission had to be stopped again later for this parameter.
2. Metocean buoys **2500616** and **6200551** reported a few wrong pressure values before they stopped transmitting on 1st June and 12th May, respectively.
3. Metocean buoys WMO **6400615**, **6400623** and **6400668** temporarily reported wrong pressure data in May for unknown reasons but not enough to have their GTS transmission stopped.

Air temperature

4. Spanish moored buoy **6100197** still presented a bias around 2.0°C in the beginning of May. At the end of the month, the bias increased dramatically to reach 8-10°C.

Wind

5. Spanish moored buoy WMO **6200024** reports wind direction values which systematically biased for about 90 degrees.
6. UK moored buoy L4 (WMO **6200030**) reported biased wind direction values (~75 degrees) before it stopped transmitting.
7. Portuguese moored buoy WMO **6200191** reported abnormal calm winds till the 3rd of June.

Monthly QC statistics and other data quality control tools are available on line at :

<http://www.meteo.shom.fr/qctools/>

The working area of the E-SURFMAR website is open at <http://esurfmar.meteo.fr/wikisurf-wa/> . Ask the E-SURFMAR Programme Manager Pierre.Blouch@meteo.fr for the password in case you forgot it. Graphs of system performances may be displayed/downloaded at http://esurfmar.meteo.fr/doc/r/surfmar/others/e-surfmar_monitoring.pdf.