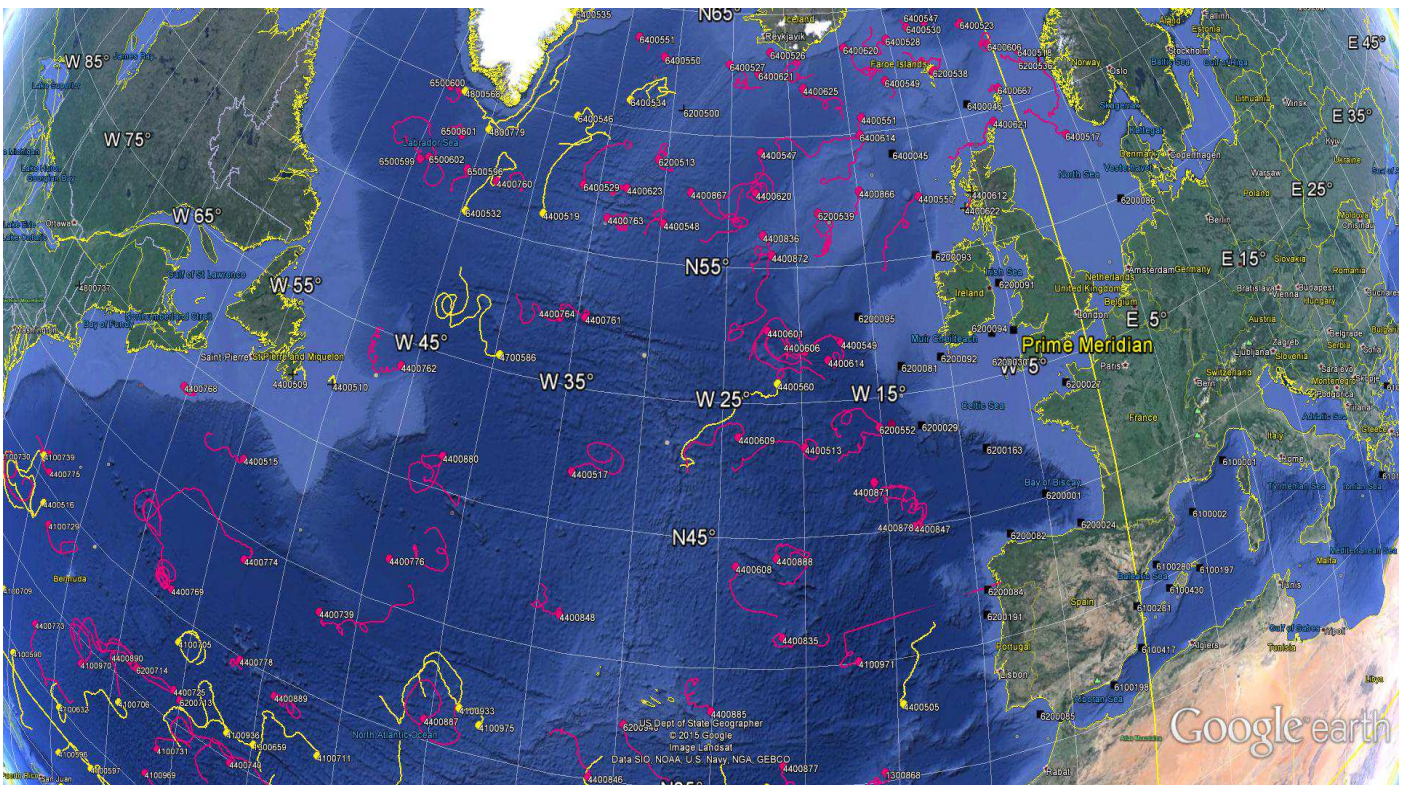


## **DATA BUOY MONTHLY REPORT**

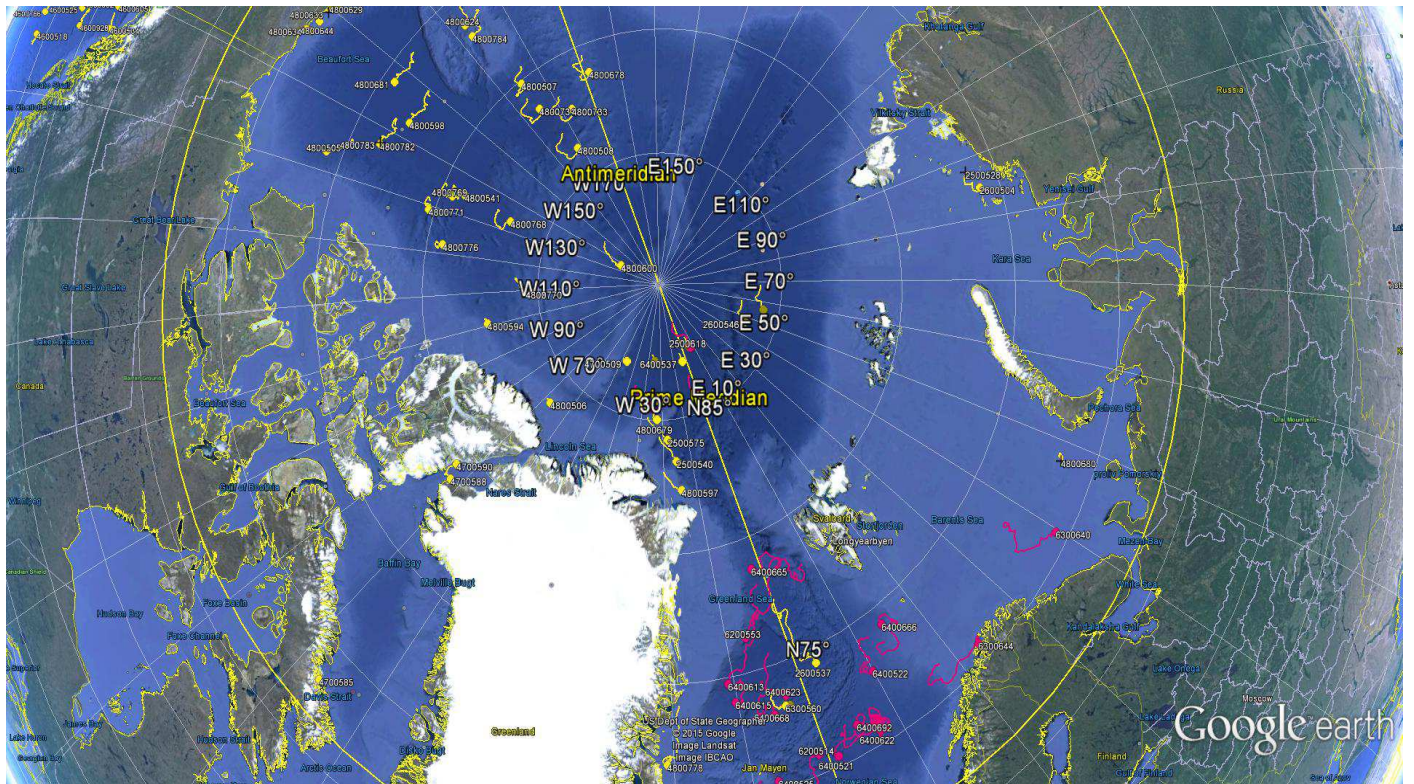
**June 2015**



*June 2015 : Operating data buoys in the North Atlantic  
Drifting buoy trajectories : E-SURFMAR (red), others (yellow)  
Moored buoy positions (black)*

*Most recent trajectories June be seen at:  
[http://www.meteo.shom.fr/cartographie/data/kml/MeteoFrance\\_buoys\\_map\\_15.kmz](http://www.meteo.shom.fr/cartographie/data/kml/MeteoFrance_buoys_map_15.kmz)*

# E-SURFMAR DB Monthly Report June 2015



June 2015  
Drifting buoy trajectories in Arctic Ocean and adjacent seas : E-SURFMAR (red), others (yellow)

-----  
**DRIFTING BUOYS**  
-----

**Network status**

By the end of June, **130 Drifting buoys**, reporting air pressure onto the GTS, were in operation in the frame of E-SURFMAR. Out of these, 91 were E-SURFMAR funded Iridium SVP-Bs, including 4 in the Arctic, 4 in AtlantOS activities and 7 HRSST-2 buoys. The remaining buoys were: 39 drifters owned by NOAA and upgraded with barometers by E-SURFMAR.

Information about the availability of buoys for future deployments may be get from the E-SURFMAR wikisite (working area) at: [http://esurfmar.meteo.fr/wikisurf-wa/index.php/Availability\\_of\\_drifting\\_buoys](http://esurfmar.meteo.fr/wikisurf-wa/index.php/Availability_of_drifting_buoys)

Besides E-SURFMAR buoys, 69 drifting buoys were reporting at least air pressure observations from the EUMETNET area of interest. Out of these, only one was reporting Sea Surface Salinity.

**Drifting buoys - New deployments**

| WMO     | Telcom   | Typ | Ow | Dep_Date | DepLat | DepLon | From      | Comment                          |
|---------|----------|-----|----|----------|--------|--------|-----------|----------------------------------|
|         | 60898130 | MSB | EU | 20150607 | 61.3   | -12.0  | Rotterdam | Lagarfoss (Failed at deployment) |
| 6400528 | 61471310 | DSB | UP | 20150617 | 64.3   | -15.2  | Brest     | FS Etoile                        |
| 6400529 | 11027150 | MSB | EU | 20150616 | 59.1   | -33.8  | Brest     | Thalassa                         |
| 6400530 | 61470290 | DSB | UP | 20150617 | 64.4   | -8.5   | Brest     | FS Etoile                        |
| 6400547 | 61473300 | DSB | UP | 20150618 | 64.2   | -5.0   | Brest     | FS Etoile                        |
| 6400548 | 61472290 | DSB | UP | 20150619 | 64.1   | 2.0    | Brest     | FS Etoile                        |
| 6400549 | 60898120 | MSB | EU | 20150620 | 61.3   | -12.0  | Rotterdam | Lagarfoss                        |
| 6400550 | 11463700 | MSB | UP | 20150623 | 63.0   | -30.7  | Brest     | Thalassa                         |
| 6400551 | 11795230 | MSB | E2 | 20150623 | 63.0   | -33.0  | Brest     | Thalassa                         |
| 6400552 | 10822640 | MSB | EU | 20150626 | 60.3   | -29.0  | Brest     | Thalassa                         |

-----  
**Operating drifting buoys in North Atlantic by the end of the month**

| WMO     | Telcom   | Typ | Ow | nobs | Wi | AT | AP | dP | ST | Wa | Ws | Dr | Sb | U | SS | O | Start_end | Lat    | Lon    | Age |
|---------|----------|-----|----|------|----|----|----|----|----|----|----|----|----|---|----|---|-----------|--------|--------|-----|
| 1300868 | 11686410 | MSB | EU | 321  | -  | -  | X  | X  | X  | -  | -  | X  | -  | - | -  | T | 0106-3006 | 35.44  | -15.80 | 222 |
| 1300869 | 11688410 | MSB | EU | 702  | -  | -  | X  | X  | X  | -  | -  | X  | -  | - | -  | T | 0106-3006 | 21.38  | -35.95 | 220 |
| 1300870 | 61512860 | MSB | EU | 656  | -  | -  | X  | X  | X  | -  | -  | X  | -  | - | -  | T | 0106-3006 | 31.31  | -16.86 | 110 |
| 1300871 | 61516870 | MSB | EU | 703  | -  | -  | X  | X  | X  | -  | -  | X  | -  | - | -  | T | 0106-3006 | 24.09  | -29.04 | 108 |
| 1300872 | 61611050 | MSB | EU | 701  | -  | -  | X  | X  | X  | -  | -  | X  | -  | - | -  | T | 0106-3006 | 23.92  | -21.29 | 109 |
| 1500681 | 61661310 | MSB | EU | 701  | -  | -  | X  | X  | X  | -  | -  | X  | -  | - | -  | T | 0106-3006 | -12.47 | -4.16  | 74  |
| 1500682 | 61663300 | MSB | EU | 701  | -  | -  | X  | X  | X  | -  | -  | X  | -  | - | -  | T | 0106-3006 | -11.24 | -4.22  | 75  |
| 1500683 | 61663370 | MSB | EU | 701  | -  | -  | X  | X  | X  | -  | -  | X  | -  | - | -  | T | 0106-3006 | -6.68  | -16.81 | 76  |
| 1500684 | 62328350 | MSB | EU | 701  | -  | -  | X  | X  | X  | -  | -  | X  | -  | - | -  | T | 0106-3006 | -6.77  | -10.84 | 75  |
| 2500617 | 61767070 | MSB | EU | 720  | -  | -  | X  | X  | X  | -  | -  | X  | -  | - | -  | T | 0106-3006 | 85.44  | -24.89 | 283 |
| 2500618 | 11020180 | MSB | EU | 702  | -  | -  | X  | X  | X  | -  | -  | X  | -  | - | -  | T | 0106-3006 | 87.34  | 7.44   | 71  |
| 2500620 | 61760090 | MSB | EU | 720  | -  | -  | X  | X  | X  | -  | -  | X  | -  | - | -  | T | 0106-3006 | 85.18  | 0.85   | 277 |
| 4100729 | 62321360 | MSB | EU | 701  | -  | -  | X  | X  | X  | -  | -  | X  | -  | - | -  | T | 0106-3006 | 33.59  | -67.61 | 35  |
| 4100730 | 62326350 | MSB | EU | 701  | -  | -  | X  | X  | X  | -  | -  | X  | -  | - | -  | T | 0106-3006 | 33.42  | -74.09 | 34  |
| 4100731 | 62329360 | MSB | EU | 701  | -  | -  | X  | X  | X  | -  | -  | X  | -  | - | -  | T | 0106-3006 | 28.12  | -56.01 | 40  |
| 4100969 | 60213780 | PSB | UP | 703  | -  | -  | X  | X  | X  | -  | -  | X  | -  | - | -  | T | 0106-3006 | 26.29  | -56.71 | 692 |
| 4100970 | 60213790 | PSB | UP | 701  | -  | -  | X  | X  | X  | -  | -  | X  | -  | - | -  | T | 0106-3006 | 28.91  | -62.60 | 691 |
| 4100971 | 60215900 | PSB | UP | 628  | -  | -  | X  | X  | X  | -  | -  | X  | -  | - | -  | T | 0106-3006 | 40.13  | -17.10 | 691 |
| 4100972 | 60217780 | PSB | UP | 700  | -  | -  | X  | X  | X  | -  | -  | X  | -  | - | -  | T | 0106-3006 | 29.75  | -48.21 | 691 |
| 4400513 | 61475450 | DSB | UP | 701  | -  | -  | X  | X  | X  | -  | -  | X  | -  | - | -  | T | 0106-3006 | 48.38  | -19.88 | 114 |
| 4400515 | 61476450 | DSB | UP | 701  | -  | -  | X  | X  | X  | -  | -  | X  | -  | - | -  | T | 0106-3006 | 42.91  | -54.43 | 116 |
| 4400517 | 61477390 | DSB | UP | 700  | -  | -  | X  | X  | X  | -  | -  | X  | -  | - | -  | T | 0106-3006 | 46.91  | -33.91 | 113 |
| 4400546 | 11160640 | MSB | EU | 702  | -  | -  | X  | X  | X  | -  | -  | X  | -  | - | -  | T | 0106-3006 | 25.41  | -39.47 | 833 |
| 4400547 | 60173710 | MSB | EU | 702  | -  | -  | X  | X  | X  | -  | -  | X  | -  | - | -  | T | 0106-3006 | 59.41  | -22.53 | 324 |
| 4400548 | 11799230 | MSB | E2 | 703  | -  | -  | X  | X  | X  | -  | -  | X  | -  | - | -  | T | 0106-3006 | 56.49  | -29.80 | 324 |
| 4400549 | 60896130 | MSB | EU | 701  | -  | -  | X  | X  | X  | -  | -  | X  | -  | - | -  | T | 0106-3006 | 52.18  | -17.25 | 297 |
| 4400550 | 60894140 | MSB | EU | 703  | -  | -  | X  | X  | X  | -  | -  | X  | -  | - | -  | T | 0106-3006 | 57.30  | -10.27 | 297 |
| 4400551 | 60892140 | MSB | EU | 702  | -  | -  | X  | X  | X  | -  | -  | X  | -  | - | -  | T | 0106-3006 | 60.62  | -13.89 | 297 |
| 4400601 | 60890150 | MSB | EU | 701  | -  | -  | X  | X  | X  | -  | -  | X  | -  | - | -  | T | 0106-3006 | 52.70  | -22.18 | 296 |

## E-SURFMAR DB Monthly Report June 2015

|         |          |     |    |     |   |   |   |   |   |   |   |   |   |   |   |   |           |       |        |      |
|---------|----------|-----|----|-----|---|---|---|---|---|---|---|---|---|---|---|---|-----------|-------|--------|------|
| 4400606 | 11162640 | MSB | EU | 702 | - | - | X | X | X | - | - | X | - | - | - | T | 0106-3006 | 51.91 | -19.71 | 265  |
| 4400608 | 11093800 | MSB | E2 | 701 | - | - | X | X | X | - | - | X | - | - | - | T | 0106-3006 | 43.98 | -23.97 | 264  |
| 4400609 | 61613050 | MSB | EU | 701 | - | - | X | X | X | - | - | X | - | - | - | T | 0106-3006 | 48.77 | -23.98 | 146  |
| 4400613 | 11475040 | MSB | EU | 702 | - | - | X | X | X | - | - | X | - | - | - | T | 0106-3006 | 30.45 | -22.81 | 847  |
| 4400614 | 61661340 | MSB | EU | 699 | - | - | X | X | X | - | - | X | - | - | - | T | 0106-3006 | 51.54 | -18.18 | 427  |
| 4400620 | 61667370 | MSB | EU | 701 | - | - | X | X | X | - | - | X | - | - | - | T | 0106-3006 | 57.84 | -22.95 | 426  |
| 4400621 | 61519840 | MSB | EU | 702 | - | - | X | X | X | - | - | X | - | - | - | T | 0106-3006 | 59.56 | -2.38  | 507  |
| 4400622 | 61668320 | MSB | EU | 432 | - | - | X | X | - | - | - | X | - | - | - | T | 0106-2906 | 56.53 | -6.76  | 424  |
| 4400623 | 61669330 | MSB | EU | 701 | - | - | X | X | X | - | - | X | - | - | - | T | 0106-3006 | 57.65 | -32.86 | 145  |
| 4400624 | 11341110 | YSB | EU | 684 | - | - | X | X | X | - | - | X | - | - | - | T | 0106-3006 | 25.27 | -23.70 | 932  |
| 4400625 | 61668340 | MSB | EU | 634 | - | - | X | X | X | - | - | X | - | - | - | T | 0106-3006 | 61.93 | -18.70 | 425  |
| 4400725 | 11027170 | MSB | EU | 702 | - | - | X | X | X | - | - | X | - | - | - | T | 0106-3006 | 31.64 | -55.43 | 1103 |
| 4100730 | 62326350 | MSB | EU | 701 | - | - | X | X | X | - | - | X | - | - | - | T | 0106-3006 | 33.42 | -74.09 | 32   |
| 4400739 | 61516840 | MSB | EU | 701 | - | - | X | X | X | - | - | X | - | - | - | T | 0106-3006 | 38.64 | -47.27 | 393  |
| 4400740 | 11883820 | PSB | UP | 701 | - | - | X | X | X | - | - | X | - | - | - | T | 0106-3006 | 30.00 | -51.14 | 1088 |
| 4400760 | 61662360 | MSB | EU | 701 | - | - | X | X | X | - | - | X | - | - | - | T | 0106-3006 | 56.87 | -42.91 | 145  |
| 4400761 | 61669320 | MSB | EU | 701 | - | - | X | X | X | - | - | X | - | - | - | T | 0106-3006 | 52.62 | -34.44 | 145  |
| 4400762 | 61664310 | MSB | EU | 701 | - | - | X | X | X | - | - | X | - | - | - | T | 0106-3006 | 49.06 | -45.90 | 144  |
| 4400763 | 61667330 | MSB | EU | 648 | - | - | X | X | X | - | - | X | - | - | - | T | 0106-3006 | 56.42 | -33.97 | 108  |
| 4400764 | 61662330 | MSB | EU | 701 | - | - | X | X | X | - | - | X | - | - | - | T | 0106-3006 | 52.44 | -36.15 | 107  |
| 4400768 | 62322360 | MSB | EU | 701 | - | - | X | X | X | - | - | X | - | - | - | T | 0106-3006 | 44.02 | -60.30 | 39   |
| 4400769 | 62328360 | MSB | EU | 701 | - | - | X | X | X | - | - | X | - | - | - | T | 0106-3006 | 35.95 | -56.93 | 40   |
| 4400773 | 60211790 | PSB | UP | 600 | - | - | X | X | X | - | - | X | - | - | - | T | 0106-3006 | 28.12 | -67.16 | 717  |
| 4400774 | 61477400 | DSB | UP | 702 | - | - | X | X | X | - | - | X | - | - | - | T | 0106-3006 | 39.12 | -52.60 | 227  |
| 4400775 | 61476400 | DSB | UP | 699 | - | - | X | X | X | - | - | X | - | - | - | T | 0106-3006 | 35.77 | -68.74 | 227  |
| 4400776 | 61474410 | DSB | UP | 700 | - | - | X | X | X | - | - | X | - | - | - | T | 0106-3006 | 41.83 | -43.78 | 226  |
| 4400778 | 61475430 | DSB | UP | 701 | - | - | X | X | X | - | - | X | - | - | - | T | 0106-3006 | 34.95 | -51.52 | 225  |
| 4400835 | 60218770 | PSB | UP | 701 | - | - | X | X | X | - | - | X | - | - | - | T | 0106-3006 | 41.25 | -21.30 | 484  |
| 4400836 | 60218680 | PSB | UP | 701 | - | - | X | X | X | - | - | X | - | - | - | T | 0106-3006 | 56.24 | -22.43 | 484  |
| 4400837 | 60209490 | PSB | UP | 701 | - | - | X | X | X | - | - | X | - | - | - | T | 0106-3006 | 32.25 | -18.06 | 484  |
| 4400839 | 60205090 | PSB | UP | 701 | - | - | X | X | X | - | - | X | - | - | - | T | 0106-3006 | 35.00 | -21.86 | 484  |
| 4400846 | 60441290 | DSB | UP | 700 | - | - | X | X | X | - | - | X | - | - | - | T | 0106-3006 | 35.16 | -31.28 | 521  |
| 4400847 | 60442280 | DSB | UP | 699 | - | - | X | X | X | - | - | X | - | - | - | T | 0106-3006 | 45.06 | -13.46 | 521  |
| 4400848 | 60448280 | DSB | UP | 700 | - | - | X | X | X | - | - | X | - | - | - | T | 0106-3006 | 41.49 | -33.62 | 520  |
| 4400863 | 60211690 | PSB | UP | 701 | - | - | X | X | X | - | - | X | - | - | - | T | 0106-3006 | 27.41 | -43.37 | 715  |
| 4400866 | 11793240 | MSB | E2 | 702 | - | - | X | X | X | - | - | X | - | - | - | T | 0106-3006 | 57.77 | -14.90 | 375  |
| 4400867 | 11593590 | MSB | EU | 702 | - | - | X | X | X | - | - | X | - | - | - | T | 0106-3006 | 57.76 | -27.94 | 373  |
| 4400868 | 11794230 | MSB | E2 | 702 | - | - | X | X | X | - | - | X | - | - | - | T | 0106-3006 | 29.08 | -43.24 | 784  |
| 4400871 | 11790240 | MSB | E2 | 703 | - | - | X | X | X | - | - | X | - | - | - | T | 0106-3006 | 46.91 | -15.73 | 369  |
| 4400872 | 60202920 | MSB | EU | 702 | - | - | X | X | X | - | - | X | - | - | - | T | 0106-3006 | 55.49 | -21.81 | 369  |
| 4400877 | 60526170 | PSB | UP | 701 | - | - | X | X | X | - | - | X | - | - | - | T | 0106-3006 | 36.09 | -21.20 | 512  |
| 4400878 | 60528170 | PSB | UP | 701 | - | - | X | X | X | - | - | X | - | - | - | T | 0106-3006 | 45.09 | -13.19 | 512  |
| 4400880 | 60656880 | PSB | UP | 658 | - | - | X | X | X | - | - | X | - | - | - | T | 0106-3006 | 46.32 | -41.85 | 513  |
| 4400885 | 60218780 | PSB | UP | 701 | - | - | X | X | X | - | - | X | - | - | - | T | 0106-3006 | 38.34 | -25.06 | 397  |
| 4400887 | 60251440 | PSB | UP | 701 | - | - | X | X | X | - | - | X | - | - | - | T | 0106-3006 | 35.96 | -40.30 | 399  |
| 4400888 | 60359010 | PSB | UP | 701 | - | - | X | X | X | - | - | X | - | - | - | T | 0106-3006 | 44.28 | -21.64 | 397  |
| 4400889 | 60202320 | PSB | UP | 701 | - | - | X | X | X | - | - | X | - | - | - | T | 0106-3006 | 34.23 | -49.02 | 398  |
| 4400890 | 12000230 | PSB | UP | 701 | - | - | X | X | X | - | - | X | - | - | - | T | 0106-3006 | 31.31 | -58.82 | 397  |
| 4400891 | 12007220 | PSB | UP | 701 | - | - | X | X | X | - | - | X | - | - | - | T | 0106-3006 | 24.79 | -34.61 | 395  |
| 4400892 | 60018400 | PSB | UP | 703 | - | - | X | X | X | - | - | X | - | - | - | T | 0106-3006 | 48.98 | -14.37 | 396  |
| 6200513 | 61665360 | MSB | EU | 701 | - | - | X | X | X | - | - | X | - | - | - | T | 0106-3006 | 58.91 | -30.68 | 146  |
| 6200514 | 60203700 | MSB | E2 | 702 | - | - | X | X | X | - | - | X | - | - | - | T | 0106-3006 | 70.86 | -1.05  | 859  |
| 6200516 | 11475100 | MSB | EU | 702 | - | - | X | X | X | - | - | X | - | - | - | T | 0106-3006 | 21.45 | -32.52 | 785  |
| 6200538 | 11460700 | MSB | UP | 702 | - | - | X | X | X | - | - | X | - | - | - | T | 0106-3006 | 62.07 | -6.48  | 386  |
| 6200539 | 60891140 | MSB | EU | 701 | - | - | X | X | X | - | - | X | - | - | - | T | 0106-3006 | 57.04 | -18.23 | 299  |
| 6200552 | 11797240 | MSB | E2 | 702 | - | - | X | X | X | - | - | X | - | - | - | T | 0106-3006 | 48.92 | -15.15 | 264  |
| 6200553 | 11165650 | MSB | EU | 702 | - | - | X | X | X | - | - | X | - | - | - | T | 0106-3006 | 76.36 | -6.54  | 829  |
| 6200681 | 11168640 | MSB | EU | 702 | - | - | X | X | X | - | - | X | - | - | - | T | 0106-3006 | 29.01 | -18.67 | 957  |
| 6200695 | 60408990 | MSB | E2 | 702 | - | - | X | X | X | - | - | X | - | - | - | T | 0106-3006 | 25.75 | -40.03 | 785  |
| 6200713 | 11246980 | YSB | EU | 692 | - | - | X | X | X | - | - | X | - | - | - | T | 0106-3006 | 31.37 | -54.90 | 931  |
| 6200714 | 11240980 | YSB | EU | 688 | - | - | X | X | X | - | - | X | - | - | - | T | 0106-3006 | 31.27 | -58.27 | 928  |
| 6200940 | 60203850 | PSB | UP | 701 | - | - | X | X | X | - | - | X | - | - | - | T | 0106-3006 | 37.53 | -29.65 | 394  |
| 6200941 | 61516840 | PSB | UP | 702 | - | - | X | X | X | - | - | X | - | - | - | T | 0106-3006 | 32.94 | -21.92 | 394  |
| 6300640 | 60172710 | MSB | EU | 702 | - | - | X | X | X | - | - | X | - | - | - | T | 0106-3006 | 70.65 | 39.63  | 686  |
| 6300644 | 61766070 | MSB | EU | 720 | - | - | X | X | S | - | - | X | - | - | - | T | 0106-3006 | 70.77 | 23.29  | 272  |
| 6400517 | 61619060 | MSB | EU | 698 | - | - | X | X | X | - | - | X | - | - | - | T | 0106-3006 | 58.20 | 3.72   | 231  |
| 6400518 | 60892150 | MSB | EU | 496 | - | - | X | X | X | - | - | X | - | - | - | T | 0106-3006 | 62.05 | 2.41   | 230  |
| 6400519 | 61518850 | MSB | EU | 701 | - | - | X | X | X | - | - | X | - | - | - | T | 0106-3006 | 66.53 | 6.88   | 164  |
| 6400520 | 11479040 | MSB | EU | 702 | - | - | X | X | X | - | - | X | - | - | - | T | 0106-3006 | 67.89 | -9.43  | 781  |
| 6400521 | 11470030 | MSB | EU | 702 | - | - | X | X | X | - | - | X | - | - | - | T | 0106-3006 | 70.46 | 1.25   | 779  |
| 6400522 | 61511870 | MSB | EU | 690 | - | - | X | X | X | - | - | X | - | - | - | T | 0106-3006 | 72.91 | 9.94   | 312  |
| 6400523 | 61510870 | MSB | EU | 701 | - | - | X | X | X | - | - | X | - | - | - | T | 0106-3006 | 63.79 | -2.33  | 234  |
| 6400524 | 61619040 | MSB | EU | 699 | - | - | X | X | X | - | - | X | - | - | - | T | 0106-3006 | 66.29 | 10.20  | 234  |
| 6400525 | 60175710 | MSB | EU | 702 | - | - | X | X | X | - | - | X | - | - | - | T | 0106-3006 | 70.34 | -6.87  | 683  |
| 6400526 | 61611070 | MSB | EU | 701 | - | - | X | X | X | - | - | X | - | - | - | T | 0106-3006 | 63.41 | -21.50 | 232  |
| 6400527 | 61514840 | MSB | EU | 690 | - | - | X | X | X | - | - | X | - | - | - | T | 0106-3006 | 62.88 | -25.25 | 231  |

## E-SURFMAR DB Monthly Report June 2015

|         |          |     |    |     |   |   |   |   |   |   |   |   |   |   |   |   |           |       |        |     |
|---------|----------|-----|----|-----|---|---|---|---|---|---|---|---|---|---|---|---|-----------|-------|--------|-----|
| 6400528 | 61471310 | DSB | UP | 323 | - | - | X | X | X | - | - | X | - | - | - | T | 1706-3006 | 63.68 | -10.27 | 14  |
| 6400529 | 11027150 | MSB | EU | 323 | - | - | X | X | S | - | - | X | - | - | - | T | 1706-3006 | 57.51 | -36.22 | 15  |
| 6400530 | 61470290 | DSB | UP | 298 | - | - | X | X | X | - | - | X | - | - | - | T | 1806-3006 | 64.05 | -7.90  | 14  |
| 6400547 | 61473300 | DSB | UP | 298 | - | - | X | X | X | - | - | X | - | - | - | T | 1806-3006 | 64.13 | -5.98  | 13  |
| 6400548 | 61472290 | DSB | UP | 265 | - | - | X | X | X | - | - | - | - | - | - | T | 1906-3006 | 65.18 | 2.62   | 12  |
| 6400549 | 60898120 | MSB | EU | 180 | - | - | X | X | X | - | - | X | - | - | - | T | 2306-3006 | 61.98 | -11.19 | 11  |
| 6400550 | 11463700 | MSB | UP | 179 | - | - | X | X | X | - | - | X | - | - | - | T | 2306-3006 | 62.95 | -31.20 | 8   |
| 6400551 | 11795230 | MSB | E2 | 155 | - | - | X | X | X | - | - | X | - | - | - | T | 2406-3006 | 63.67 | -33.86 | 8   |
| 6400552 | 10822640 | MSB | EU | 96  | - | - | X | X | X | - | - | X | - | - | - | T | 2606-3006 | 60.06 | -29.83 | 4   |
| 6400606 | 61515870 | MSB | EU | 667 | - | - | X | X | X | - | - | X | - | - | - | T | 0106-3006 | 62.62 | -0.36  | 160 |
| 6400613 | 60174710 | MSB | EU | 702 | - | - | X | X | X | - | - | X | - | - | - | T | 0106-3006 | 74.76 | -10.93 | 668 |
| 6400614 | 60178700 | MSB | EU | 702 | - | - | X | X | X | - | - | X | - | - | - | T | 0106-3006 | 59.94 | -14.22 | 664 |
| 6400615 | 60173700 | MSB | EU | 702 | - | - | X | X | X | - | - | X | - | - | - | T | 0106-3006 | 73.97 | -10.32 | 599 |
| 6400620 | 60899130 | MSB | EU | 700 | - | - | X | X | X | - | - | X | - | - | - | T | 0106-3006 | 63.50 | -14.53 | 95  |
| 6400621 | 61614070 | MSB | EU | 687 | - | - | X | X | X | - | - | X | - | - | - | T | 0106-3006 | 62.55 | -22.64 | 94  |
| 6400622 | 60172810 | MSB | EU | 702 | - | - | X | X | X | - | - | X | - | - | - | T | 0106-3006 | 70.61 | 7.17   | 684 |
| 6400623 | 11470040 | MSB | EU | 702 | - | - | X | X | X | - | - | X | - | - | - | T | 0106-3006 | 73.67 | -2.86  | 780 |
| 6400665 | 60171710 | MSB | EU | 702 | - | - | X | X | X | - | - | X | - | - | - | T | 0106-3006 | 78.82 | -1.92  | 580 |
| 6400666 | 60179710 | MSB | EU | 702 | - | - | X | X | X | - | - | X | - | - | - | T | 0106-3006 | 74.26 | 14.45  | 580 |
| 6400667 | 61615060 | MSB | EU | 703 | - | - | X | X | X | - | - | X | - | - | - | T | 0106-3006 | 60.81 | -0.93  | 552 |
| 6400668 | 60177860 | MSB | EU | 702 | - | - | X | X | X | - | - | X | - | - | - | T | 0106-3006 | 73.08 | -5.16  | 556 |
| 6400692 | 60172720 | MSB | EU | 702 | - | - | X | X | X | - | - | X | - | - | - | T | 0106-3006 | 71.31 | 4.85   | 495 |
| 6500596 | 61511850 | MSB | EU | 700 | - | - | X | X | X | - | - | X | - | - | - | T | 0106-3006 | 56.99 | -45.48 | 377 |
| 6500599 | 62326370 | MSB | EU | 678 | - | - | X | X | X | - | - | X | - | - | - | T | 0106-3006 | 56.73 | -49.46 | 52  |
| 6500600 | 62326360 | MSB | EU | 701 | - | - | X | X | X | - | - | X | - | - | - | T | 0106-3006 | 59.82 | -49.40 | 51  |
| 6500601 | 62320360 | MSB | EU | 701 | - | - | X | X | X | - | - | X | - | - | - | T | 0106-3006 | 58.17 | -46.87 | 49  |
| 6500602 | 62323360 | MSB | EU | 701 | - | - | X | X | X | - | - | X | - | - | - | T | 0106-3006 | 56.93 | -48.82 | 49  |

### ----- Operating drifting AtlantOS buoys by the end of the month

| WMO     | Telcom   | Typ | Ow | nobs | Wi | AT | AP | dP | ST | Wa | Ws | Dr | Sb | U | SS | O | Start_end | Lat    | Lon    | Age |
|---------|----------|-----|----|------|----|----|----|----|----|----|----|----|----|---|----|---|-----------|--------|--------|-----|
| 1500681 | 61661310 | MSB | EU | 701  | -  | -  | X  | X  | X  | -  | -  | X  | -  | - | -  | T | 0106-3006 | -12.47 | -4.16  | 74  |
| 1500682 | 61663300 | MSB | EU | 701  | -  | -  | X  | X  | X  | -  | -  | X  | -  | - | -  | T | 0106-3006 | -11.24 | -4.22  | 75  |
| 1500683 | 61663370 | MSB | EU | 701  | -  | -  | X  | X  | X  | -  | -  | X  | -  | - | -  | T | 0106-3006 | -6.68  | -16.81 | 76  |
| 1500684 | 62328350 | MSB | EU | 701  | -  | -  | X  | X  | X  | -  | -  | X  | -  | - | -  | T | 0106-3006 | -6.77  | -10.84 | 75  |

### ----- Drifting buoys which ceased to be operational

| WMO     | Telcom   | Typ | Ow | End_Date | Lat   | Lon  | Age | Cause                         |
|---------|----------|-----|----|----------|-------|------|-----|-------------------------------|
| 6200536 | 11599570 | MSB | EU | 20150624 | 61.53 | 4.19 | 381 | Recovered by Oceanic champion |

### ----- Non-operating drifting buoys reporting GTS data

| WMO     | Telcom   | Typ | Ow | nobs | Wi | AT | AP | dP | ST | Wa | Ws | Dr | Sb | U | SS | O | Start_end | Lat   | Lon    | Age |
|---------|----------|-----|----|------|----|----|----|----|----|----|----|----|----|---|----|---|-----------|-------|--------|-----|
| 2500624 | 60247420 | MSB | EU | 720  | -  | -  | -  | -  | X  | -  | -  | X  | -  | - | -  | T | 0106-3006 | 61.72 | -7.50  | 669 |
| 4400604 | 11794240 | MSB | E2 | 702  | -  | -  | -  | -  | X  | -  | -  | X  | -  | - | -  | T | 0106-3006 | 48.31 | -42.03 | 266 |
| 6500595 | 11595570 | MSB | EU | 702  | -  | -  | -  | -  | X  | -  | -  | X  | -  | - | -  | T | 0106-3006 | 53.13 | -43.61 | 379 |

### ----- Non-operating drifting buoys which ceased to emit

| WMO     | Telcom   | Typ | Ow | End_Date | Lat   | Lon    | Age | Cause               |
|---------|----------|-----|----|----------|-------|--------|-----|---------------------|
| 2500616 | 61762070 | MSB | EU | 20150601 | 75.06 | 154.35 | 300 | Battery failed      |
| 2500652 | 60176700 | MSB | EU | 20150605 | 81.95 | 20.17  | 632 | Unknown             |
| 4400602 | 11468700 | MSB | UP | 20150531 | 56.92 | -5.92  | 801 | Ashored in Scotland |
| 4400612 | 61511880 | MSB | EU | 20150606 | 57.06 | -5.91  | 532 | Ashored in Scotland |

# E-SURFMAR DB Monthly Report June 2015

-----  
Other operating drifting buoys inside the EUMETNET area by the end of the month

| WMO     | Telcom   | Typ  | Ow   | nobs | Wi | AT | AP | dP | ST | Wa | Ws | Dr | Sb | U | SS | O | Start_end | Lat   | Lon    |
|---------|----------|------|------|------|----|----|----|----|----|----|----|----|----|---|----|---|-----------|-------|--------|
| 1300515 | 114951   | AOML |      | 694  | -  | -  | X  | -  | X  | -  | -  | X  | -  | - | -  | L | 0106-3006 | 22.98 | -42.38 |
| 1300517 | 114943   | AOML |      | 682  | -  | -  | X  | -  | X  | -  | -  | X  | -  | - | -  | L | 0106-3006 | 14.04 | -37.67 |
| 1300519 | 127004   | AOML |      | 707  | -  | -  | X  | X  | X  | -  | -  | X  | -  | - | -  | L | 0106-3006 | 18.58 | -36.34 |
| 1300523 | 114877   | AOML |      | 690  | -  | -  | X  | -  | X  | -  | -  | X  | -  | - | -  | L | 0106-3006 | 12.51 | -60.12 |
| 1300525 | 127003   | AOML |      | 713  | -  | -  | X  | X  | X  | -  | -  | X  | -  | - | -  | L | 0106-3006 | 3.36  | -41.75 |
| 1300530 | 114916   | AOML |      | 698  | -  | -  | X  | -  | X  | -  | -  | X  | -  | - | -  | L | 0106-3006 | 8.24  | -30.87 |
| 1300531 | 114921   | AOML |      | 692  | -  | -  | X  | -  | X  | -  | -  | X  | -  | - | -  | L | 0106-3006 | 12.67 | -46.95 |
| 1300569 | 114880   | AOML |      | 685  | -  | -  | X  | -  | X  | -  | -  | X  | -  | - | -  | L | 0106-3006 | 27.13 | -30.73 |
| 1300570 | 116474   | AOML |      | 718  | -  | -  | X  | -  | X  | -  | -  | X  | -  | - | -  | L | 0106-3006 | 35.18 | -22.02 |
| 1300572 | 127002   | AOML |      | 720  | -  | -  | X  | X  | X  | -  | -  | X  | -  | - | -  | L | 0106-3006 | 32.15 | -28.29 |
| 1300590 | 139285   | AOML |      | 682  | -  | -  | X  | X  | X  | -  | -  | X  | -  | - | -  | L | 0106-3006 | 31.29 | -22.08 |
| 1300633 | 109491   | AOML |      | 716  | -  | -  | X  | X  | X  | -  | -  | X  | -  | - | -  | L | 0106-3006 | 34.43 | -29.72 |
| 1300659 | 11910180 | UKMO |      | 703  | -  | -  | X  | X  | X  | -  | -  | X  | -  | - | -  | T | 0106-3006 | 31.53 | -49.82 |
| 1300660 | 11022040 | UKMO |      | 703  | -  | -  | X  | X  | X  | -  | -  | X  | -  | - | -  | T | 0106-3006 | 29.45 | -44.75 |
| 1300661 | 62325770 | UKMO |      | 703  | -  | -  | X  | X  | X  | -  | -  | X  | -  | - | -  | T | 0106-3006 | 12.32 | -26.70 |
| 1300662 | 11098800 | UKMO |      | 703  | -  | -  | X  | X  | X  | -  | -  | X  | -  | - | -  | T | 0106-3006 | 28.46 | -47.61 |
| 1500951 | 10450430 | CMM  |      | 689  | -  | -  | X  | X  | X  | -  | -  | X  | -  | - | -  | T | 0106-3006 | 4.47  | -3.34  |
| 2100942 | 119223   | UKMO |      | 715  | -  | -  | X  | X  | X  | -  | -  | X  | -  | - | -  | T | 0106-3006 | 27.02 | -34.27 |
| 2500540 |          | APL  |      | 719  | -  | -  | X  | X  | X  | -  | -  | -  | -  | - | -  | L | 0106-3006 | 83.44 | -15.36 |
| 2500575 |          |      |      | 623  | -  | -  | X  | X  | X  | -  | -  | -  | -  | - | -  | L | 0106-3006 | 84.26 | -18.05 |
| 2600537 | 61369210 | PSC  |      | 716  | -  | -  | X  | X  | X  | -  | -  | X  | -  | - | -  | O | 0106-3006 | 74.41 | 3.02   |
| 3100515 |          |      |      | 692  | -  | -  | X  | -  | X  | -  | -  | X  | -  | - | -  | L | 0106-3006 | 19.16 | -60.78 |
| 3100717 | 61614160 | CMM  |      | 701  | -  | -  | X  | X  | X  | -  | -  | X  | -  | - | -  | T | 0106-3006 | 19.82 | -63.89 |
| 3100720 | 62652340 | CMM  | 1439 | -    | -  | -  | X  | X  | X  | -  | -  | X  | -  | - | X  | T | 0106-3006 | 4.56  | -6.11  |
| 3100863 | 61611040 | CMM  |      | 701  | -  | -  | X  | X  | X  | -  | -  | X  | -  | - | -  | T | 0106-3006 | 18.79 | -56.38 |
| 4100564 | 109221   | AOML |      | 703  | -  | -  | X  | -  | X  | -  | -  | X  | -  | - | -  | L | 0106-3006 | 30.19 | -32.28 |
| 4100580 | 132677   | AOML |      | 697  | -  | -  | X  | X  | X  | -  | -  | X  | -  | - | -  | L | 0106-3006 | 20.76 | -46.46 |
| 4100590 | 132676   | AOML |      | 719  | -  | -  | X  | X  | X  | -  | -  | X  | -  | - | -  | L | 0106-3006 | 24.69 | -69.22 |
| 4100591 | 132678   | AOML |      | 705  | -  | -  | X  | X  | X  | -  | -  | X  | -  | - | -  | L | 0106-3006 | 18.55 | -51.49 |
| 4100594 | 127029   | AOML |      | 716  | -  | -  | X  | X  | X  | -  | -  | X  | -  | - | -  | L | 0106-3006 | 23.94 | -54.90 |
| 4100596 | 11473050 | EUME |      | 651  | -  | -  | X  | X  | X  | -  | -  | X  | -  | - | -  | T | 0106-3006 | 22.19 | -64.02 |
| 4100597 | 61512840 | AOML |      | 701  | -  | -  | X  | X  | X  | -  | -  | X  | -  | - | -  | T | 0106-3006 | 23.54 | -61.00 |
| 4100598 | 61610040 | AOML |      | 701  | -  | -  | X  | X  | X  | -  | -  | X  | -  | - | -  | T | 0106-3006 | 24.74 | -54.80 |
| 4100600 | 61618040 | AOML |      | 702  | -  | -  | X  | X  | X  | -  | -  | X  | -  | - | -  | T | 0106-3006 | 19.47 | -60.02 |
| 4100632 | 11474050 | EUME |      | 702  | -  | -  | X  | X  | X  | -  | -  | X  | -  | - | -  | T | 0106-3006 | 25.16 | -64.10 |
| 4100705 | 11596570 | AOML |      | 702  | -  | -  | X  | X  | X  | -  | -  | X  | -  | - | -  | T | 0106-3006 | 33.95 | -55.67 |
| 4100706 | 11595580 | AOML |      | 702  | -  | -  | X  | X  | X  | -  | -  | X  | -  | - | -  | T | 0106-3006 | 28.84 | -59.22 |
| 4100711 | 11477030 | EUME |      | 701  | -  | -  | X  | X  | X  | -  | -  | X  | -  | - | -  | T | 0106-3006 | 32.54 | -45.97 |
| 4100739 | 11912120 | UKMO |      | 48   | -  | -  | X  | X  | X  | -  | -  | X  | -  | - | -  | T | 2906-3006 | 36.13 | -69.70 |
| 4100933 | 101721   | AOML |      | 717  | -  | -  | X  | X  | X  | -  | -  | X  | -  | - | -  | L | 0106-3006 | 36.86 | -38.45 |
| 4100936 | 109488   | AOML |      | 718  | -  | -  | X  | X  | -  | -  | -  | X  | -  | - | -  | L | 0106-3006 | 31.34 | -51.56 |
| 4100975 | 109439   | AOML |      | 717  | -  | -  | X  | X  | X  | -  | -  | X  | -  | - | -  | L | 0106-3006 | 36.38 | -37.28 |
| 4400505 | 98087    | ICEP | 1462 | -    | -  | -  | X  | X  | X  | -  | -  | -  | -  | - | -  | L | 0106-3006 | 38.19 | -14.68 |
| 4400509 |          |      | 1457 | -    | -  | -  | X  | X  | X  | -  | -  | -  | -  | - | -  | L | 0106-2906 | 46.97 | -52.95 |
| 4400516 | 114599   | AOML |      | 380  | -  | -  | X  | X  | X  | -  | -  | X  | -  | - | -  | L | 0106-3006 | 34.22 | -68.54 |
| 4400519 |          |      |      | 304  | -  | -  | X  | X  | X  | -  | -  | X  | -  | - | -  | L | 1806-3006 | 56.13 | -38.78 |
| 4400558 | 123286   | AOML |      | 716  | -  | -  | X  | X  | X  | -  | -  | X  | -  | - | -  | L | 0106-3006 | 31.70 | -42.63 |
| 4400560 | 126480   | AOML |      | 721  | -  | -  | X  | X  | -  | -  | -  | X  | -  | - | -  | L | 0106-3006 | 50.75 | -21.52 |
| 4400896 | 109438   | AOML |      | 719  | -  | -  | X  | X  | X  | -  | -  | X  | -  | - | -  | L | 0106-3006 | 28.16 | -42.72 |
| 4700503 |          | APL  |      | 720  | -  | -  | X  | X  | X  | -  | -  | -  | -  | - | -  | L | 0106-3006 | 66.80 | -28.48 |
| 4700509 |          |      |      | 489  | -  | -  | X  | X  | X  | -  | -  | X  | -  | - | -  | O | 1006-3006 | 86.89 | -46.22 |
| 4700585 | 11541430 | EC   |      | 96   | -  | -  | X  | X  | X  | -  | -  | -  | -  | - | -  | O | 2706-3006 | 68.22 | -66.65 |
| 4700586 | 11541440 | EC   |      | 718  | -  | -  | X  | X  | X  | -  | -  | X  | -  | - | -  | O | 0106-3006 | 50.59 | -39.62 |
| 4800506 | 60835100 | EC   |      | 712  | -  | -  | X  | X  | X  | -  | -  | X  | -  | - | -  | O | 0106-3006 | 83.77 | -67.27 |
| 4800568 | 61363210 | PSC  |      | 716  | -  | -  | X  | X  | X  | -  | -  | X  | -  | - | -  | O | 0106-3006 | 59.84 | -47.94 |
| 4800597 | 100009   | PSC  | 1338 | X    | X  | X  | -  | -  | -  | -  | -  | X  | -  | - | -  | O | 0106-3006 | 82.36 | -14.64 |
| 4800679 | 63233150 | APL  |      | 642  | -  | -  | X  | X  | X  | -  | -  | X  | -  | - | -  | T | 0106-3006 | 85.02 | -22.49 |
| 4800778 | 60894080 | EC   |      | 715  | -  | -  | X  | X  | X  | -  | -  | -  | -  | - | -  | O | 0106-3006 | 71.70 | -20.86 |
| 4800779 | 60890090 | EC   |      | 717  | -  | -  | X  | X  | X  | -  | -  | -  | -  | - | -  | O | 0106-3006 | 58.71 | -44.80 |
| 6300546 | 61361200 | PSC  |      | 716  | -  | -  | X  | X  | X  | -  | -  | X  | -  | - | -  | O | 0106-3006 | 65.36 | -10.72 |
| 6300560 |          |      |      | 462  | -  | -  | X  | -  | X  | -  | -  | X  | -  | - | -  | L | 1106-3006 | 73.28 | -3.30  |
| 6300561 |          |      |      | 462  | -  | -  | X  | -  | X  | -  | -  | X  | -  | - | -  | L | 1106-3006 | 73.25 | -2.68  |
| 6300923 |          |      |      | 489  | -  | -  | X  | X  | X  | -  | -  | X  | -  | - | -  | O | 1006-3006 | 87.41 | 6.12   |
| 6400532 |          |      |      | 721  | -  | -  | X  | X  | X  | -  | -  | -  | -  | - | -  | L | 0106-3006 | 55.44 | -44.59 |
| 6400534 |          |      |      | 1115 | -  | -  | X  | X  | X  | -  | -  | -  | -  | - | -  | L | 0106-3006 | 61.08 | -33.69 |
| 6400535 |          |      |      | 720  | -  | -  | X  | X  | X  | -  | -  | -  | -  | - | -  | L | 0106-3006 | 64.21 | -40.49 |
| 6400537 |          |      |      | 163  | X  | X  | X  | X  | X  | -  | -  | X  | -  | - | -  | O | 1006-3006 | 87.00 | -3.00  |
| 6400538 |          |      |      | 488  | -  | -  | X  | X  | X  | -  | -  | X  | -  | - | -  | O | 1006-3006 | 87.15 | -24.59 |
| 6400546 |          |      |      | 702  | -  | -  | X  | X  | X  | -  | -  | X  | -  | - | -  | T | 0106-3006 | 60.08 | -37.84 |

-----  
**Abbreviations**  
-----

WMO : WMO id.  
 Argos : Argos id.  
 Typ : Buoy type  
     - first character : Manufacturer (C = ConMar , M = Metocean, P = Pacific Gyre  
   T = Technocean, Y = Marlin-Yug...)  
     - second character : Main type (F = FGGE, I = ICEB, S = SVP)  
     - third character : Sub type (B = barometer buoy, W = Wind buoy,  
   S = Salinity buoy)  
 Ow : Buoy owner (country code or EU for EUCOS, E2 for HRSST-2 buoys, UP for upgraded  
 buoys)  
 Owner : Buoy owner for non EUCOS buoys  
 Nobs : number of GTS reports received at Meteo-France  
 Parameters (X = OK, S = stopped, - = not measured) :  
     Wi : Wind  
     AT : Air Temperature  
     AP : Air Pressure  
     dP : Air pressure tendency  
     ST : Sea surface Temperature  
     Wa : Wave period and height  
     Ws : Wave spectra  
     Dr : Drogue presence  
     Sb : Subsurface temperature  
     U : Relative humidity  
     SS : Sea surface Salinity  
 O : Origin of the reports (T = Argos Toulouse, L = Argos Largo, O = Other)  
 Start\_end : first and last dates of the month for which GTS data were received at Meteo-France  
 Lat : Latitude of the latest position  
 Lon : Longitude of the latest position  
 Age : Age of the buoy (days)  
  
 DepDate : Date of deployment  
 DepLat : Latitude of deployment  
 Dep Lon : Longitude of Deployment  
 From : Harbour of departure

Definition : An operating drifting buoy is a buoy providing at least air pressure or wind  
 (direction and velocity) data.

-----  
**MOORED BUOYS**  
-----

**Former EGOS stations (K-pattern and Hydrosphere)**

| WMO            | Name        | nobs       | Wi       | AT       | AP       | dP       | ST       | Wa       | Ws       | Dr       | Sb       | U        | SS       | O        | Start_end        | Lat          | Lon         |
|----------------|-------------|------------|----------|----------|----------|----------|----------|----------|----------|----------|----------|----------|----------|----------|------------------|--------------|-------------|
| 6100001        | Cote d'Azur | 719        | X        | X        | X        | X        | X        | -        | X        | -        | -        | X        | -        | T        | 0106-3006        | 43.40        | 7.80        |
| <b>6100002</b> | <b>Lion</b> | <b>709</b> | <b>X</b> | <b>X</b> | <b>X</b> | <b>X</b> | <b>X</b> | <b>-</b> | <b>X</b> | <b>-</b> | <b>-</b> | <b>X</b> | <b>-</b> | <b>T</b> | <b>0106-3006</b> | <b>42.10</b> | <b>4.70</b> |
| 6200001        | Gascogne    | 720        | X        | X        | X        | X        | X        | X        | -        | -        | -        | X        | -        | O        | 0106-3006        | 45.30        | -5.00       |
| 6200029        | K1          | 700        | X        | X        | X        | -        | X        | X        | -        | -        | -        | X        | -        | O        | 0106-3006        | 48.70        | -12.50      |
| 6200081        | K2          | 719        | X        | X        | X        | X        | X        | X        | -        | -        | -        | -        | -        | O        | 0106-3006        | 51.00        | -13.20      |
| 6200090        | M1          | -          | -        | -        | -        | -        | -        | -        | -        | -        | -        | -        | -        | -        | -                | 53.10        | -11.20      |
| 6200091        | M2          | 717        | X        | X        | X        | -        | X        | X        | -        | -        | -        | X        | -        | O        | 0106-3006        | 53.50        | -5.40       |
| 6200092        | M3          | 717        | X        | X        | X        | -        | -        | X        | -        | -        | -        | X        | -        | O        | 0106-3006        | 51.20        | -10.50      |
| 6200093        | M4          | 715        | X        | X        | X        | -        | X        | -        | -        | -        | -        | -        | -        | O        | 0106-3006        | 54.70        | -9.10       |
| 6200094        | M5          | 716        | X        | X        | X        | -        | X        | X        | -        | -        | -        | X        | -        | O        | 0106-3006        | 51.70        | -6.70       |

## E-SURFMAR DB Monthly Report June 2015

|                   |            |          |          |          |          |          |          |   |   |   |          |   |          |                  |              |               |
|-------------------|------------|----------|----------|----------|----------|----------|----------|---|---|---|----------|---|----------|------------------|--------------|---------------|
| <b>6200095 M6</b> | <b>796</b> | <b>X</b> | <b>X</b> | <b>X</b> | <b>X</b> | <b>X</b> | <b>X</b> | - | - | - | <b>X</b> | - | <b>O</b> | <b>0106-3006</b> | <b>53.10</b> | <b>-15.90</b> |
| 6200105 K4        | -          | -        | -        | -        | -        | -        | -        | - | - | - | -        | - | -        |                  | 55.80        | -11.40        |
| 6200108 K3        | -          | -        | -        | -        | -        | -        | -        | - | - | - | -        | - | -        |                  | 53.50        | -19.50        |
| 6200163 Brittany  | 720        | X        | X        | X        | X        | X        | X        | X | - | - | X        | - | O        | 0106-3006        | 47.50        | -8.40         |
| <b>6400045 K5</b> | <b>718</b> | -        | <b>X</b> | <b>X</b> | <b>X</b> | <b>X</b> | <b>X</b> | - | - | - | <b>X</b> | - | <b>O</b> | <b>0106-3006</b> | <b>59.10</b> | <b>-11.70</b> |
| 6400046 K7        | 717        | X        | -        | X        | -        | -        | S        | - | - | - | -        | - | O        | 0106-3006        | 60.70        | -5.20         |

Comments:

- EUMETNET moored buoys are presented in bold characters.

### ----- Former EGOS moored buoys (Spanish SeaWatch and WaveScan)

| WMO                        | Name         | nobs     | Wi       | AT       | AP | dP       | ST       | Wa       | Ws | Dr | Sb | U | SS       | O | Start_end        | Lat          | Lon          |
|----------------------------|--------------|----------|----------|----------|----|----------|----------|----------|----|----|----|---|----------|---|------------------|--------------|--------------|
| 1300130                    | Gran Canaria | 713      | X        | X        | X  | -        | -        | X        | X  | -  | -  | - | -        | O | 0106-3006        | 28.18        | -15.82       |
| 1300131                    | Tenerife Sur | -        | -        | -        | -  | -        | -        | -        | -  | -  | -  | - | -        |   |                  | 28.00        | -16.58       |
| 6100196                    | C. Begur     | -        | -        | -        | -  | -        | -        | -        | -  | -  | -  | - | -        |   |                  | 41.92        | 3.65         |
| 6100197                    | Mahon        | 715      | X        | S        | X  | -        | -        | X        | X  | -  | -  | - | -        | O | 0106-3006        | 39.72        | 4.42         |
| 6100198                    | C. de Gata   | 716      | X        | X        | X  | -        | X        | X        | X  | -  | -  | - | -        | O | 0106-3006        | 36.57        | -2.33        |
| 6100280                    | Tarragona    | 689      | X        | X        | X  | -        | X        | X        | X  | -  | -  | - | X        | O | 0106-3006        | 40.77        | 1.47         |
| 6100281                    | Valencia     | 718      | X        | X        | X  | -        | X        | X        | X  | -  | -  | - | X        | O | 0106-3006        | 39.47        | -0.27        |
| 6100417                    | C. de Palos  | 712      | X        | S        | X  | -        | X        | X        | X  | -  | -  | - | X        | O | 0106-3006        | 37.65        | -0.32        |
| 6100430                    | Dragonera    | 714      | X        | X        | X  | -        | X        | X        | X  | -  | -  | - | -        | O | 0106-3006        | 39.56        | 2.11         |
| 6200024                    | Bilbao-Visc. | 716      | X        | X        | X  | -        | X        | X        | X  | -  | -  | - | X        | O | 0106-3006        | 43.63        | -3.03        |
| 6200025                    | C. de Penas  | 717      | X        | X        | X  | -        | X        | X        | X  | -  | -  | - | X        | O | 0106-3006        | 43.73        | -6.17        |
| 6200082                    | E. de Bares  | 719      | X        | X        | X  | -        | X        | X        | X  | -  | -  | - | X        | O | 0106-3006        | 44.13        | -7.69        |
| 6200083                    | Villano-Sis. | -        | -        | -        | -  | -        | -        | -        | -  | -  | -  | - | -        |   |                  | 43.48        | -9.22        |
| <b>6200084 C. Silleiro</b> | <b>188</b>   | <b>S</b> | <b>S</b> | <b>S</b> | -  | <b>S</b> | <b>S</b> | <b>S</b> | -  | -  | -  | - | <b>S</b> |   | <b>0106-0806</b> | <b>42.12</b> | <b>-9.43</b> |
| 6200085                    | G. de Cadiz  | 714      | X        | X        | X  | -        | X        | X        | X  | -  | -  | - | X        | O | 0106-3006        | 36.48        | -6.97        |
| 6201030                    | Santander    | -        | -        | -        | -  | -        | -        | -        | -  | -  | -  | - | -        |   |                  | 43.84        | -3.77        |

Comments:

- The EUMETNET buoy is presented in bold characters.

### ----- Operating POSEIDON moored buoys (Greece)

| WMO     | Name | nobs | Wi | AT | AP | dP | ST | Wa | Ws | Dr | Sb | U | SS | O | Start_end | Lat   | Lon   |
|---------|------|------|----|----|----|----|----|----|----|----|----|---|----|---|-----------|-------|-------|
| 6101000 |      | -    | -  | -  | -  | -  | -  | -  | -  | -  | -  | - | -  |   |           | 39.10 | 24.50 |
| 6101001 |      | -    | -  | -  | -  | -  | -  | -  | -  | -  | -  | - | -  |   |           | 37.60 | 23.60 |
| 6101002 |      | -    | -  | -  | -  | -  | -  | -  | -  | -  | -  | - | -  |   |           | 37.00 | 22.10 |
| 6101003 |      | 229  | X  | -  | X  | -  | -  | X  | -  | -  | -  | - | -  | O | 0106-3006 | 40.00 | 24.70 |
| 6101004 |      | -    | -  | -  | -  | -  | -  | -  | -  | -  | -  | - | -  |   |           | 39.10 | 25.80 |
| 6101005 |      | -    | -  | -  | -  | -  | -  | -  | -  | -  | -  | - | -  |   |           | 37.50 | 25.50 |
| 6101006 |      | -    | -  | -  | -  | -  | -  | -  | -  | -  | -  | - | -  |   |           | 36.30 | 25.50 |
| 6101007 |      | 239  | X  | X  | X  | -  | -  | X  | -  | -  | -  | - | -  | O | 0106-3006 | 35.80 | 24.90 |
| 6101008 |      | 130  | S  | S  | S  | -  | -  | S  | -  | -  | -  | - | -  |   | 0106-2006 | 36.80 | 21.60 |
| 6101009 |      | -    | -  | -  | -  | -  | -  | -  | -  | -  | -  | - | -  |   |           | 38.00 | 20.60 |

### ----- Other European moored buoys (operated by 3rd parties)

| WMO     | Name             | nobs | Wi | AT | AP | dP | ST | Wa | Ws | Dr | Sb | U | SS | O | Start_end | Lat   | Lon    |
|---------|------------------|------|----|----|----|----|----|----|----|----|----|---|----|---|-----------|-------|--------|
| 1200050 | Cycofos          | -    | -  | -  | -  | -  | -  | -  | -  | -  | -  | - | -  |   |           | 33.60 | 31.90  |
| 6100010 | Italia-1         | -    | -  | -  | -  | -  | -  | -  | -  | -  | -  | - | -  |   |           | 43.80 | 9.10   |
| 6200027 | Jersey           | 237  | X  | -  | X  | X  | -  | X  | -  | -  | -  | - | -  | O | 0106-3006 | 49.08 | -22.20 |
| 6200030 | L4               | 674  | -  | X  | X  | -  | -  | -  | -  | -  | -  | X | -  | O | 0206-3006 | 50.25 | -4.22  |
| 6200050 | E1               | -    | -  | -  | -  | -  | -  | -  | -  | -  | -  | - | -  |   |           | 50.04 | -4.37  |
| 6200086 | NSB II           | 486  | X  | X  | X  | X  | X  | -  | -  | -  | -  | X | -  | O | 0106-3006 | 55.00 | 6.40   |
| 6200087 | NSB III          | -    | -  | -  | -  | -  | -  | -  | -  | -  | -  | - | -  |   |           | 54.70 | 6.80   |
| 6200191 | Porto            | 647  | X  | X  | X  | -  | X  | -  | -  | -  | -  | - | -  | O | 0106-3006 | 41.15 | -9.57  |
| 6200192 | Peniche          | -    | -  | -  | -  | -  | -  | -  | -  | -  | -  | - | -  |   |           | 39.50 | -9.65  |
| 6200303 | Turbo Bank       | 720  | X  | X  | X  | X  | X  | X  | -  | -  | -  | X | -  | O | 0106-3006 | 51.60 | -5.10  |
| 6200442 | PAP              | 679  | X  | -  | -  | -  | -  | -  | -  | -  | -  | - | -  | O | 0106-3006 | 49.00 | -16.40 |
| 6600021 | Arkona Becken    | 711  | X  | X  | -  | -  | X  | X  | -  | -  | -  | - | -  | O | 0106-3006 | 54.90 | 13.90  |
| 6600022 | Oder Bank        | 608  | X  | X  | -  | -  | X  | -  | -  | -  | -  | - | -  | O | 0406-3006 | 54.10 | 14.20  |
| 6600024 | Darsser Schwelle | 716  | X  | X  | -  | -  | X  | X  | -  | -  | -  | - | -  | O | 0106-3006 | 54.70 | 12.70  |



**E-SURFMAR DB Monthly Report  
June 2015**

-----  
**Other offshore moored buoys inside the EUMETNET area**

| WMO     | Name          | nobs | Wi | AT | AP | DP | ST | Wa | Ws | Dr | Sb | U | SS | O | Start_end | Lat   | Lon    |
|---------|---------------|------|----|----|----|----|----|----|----|----|----|---|----|---|-----------|-------|--------|
| 1300001 |               | 487  | X  | X  | X  | -  | X  | -  | -  | -  | -  | X | X  | L | 0106-3006 | 11.47 | -23.00 |
| 1300008 |               | 458  | X  | X  | X  | -  | X  | -  | -  | -  | -  | X | -  | L | 0106-3006 | 14.98 | -38.02 |
| 1300308 | East Atlantic |      | -  | -  | -  | -  | -  | -  | -  | -  | -  | - | -  |   |           | 15.00 | -38.00 |
| 4100026 |               | 400  | X  | X  | -  | -  | -  | -  | -  | -  | -  | X | -  | L | 0106-3006 | 11.49 | -38.40 |
| 4100040 | West Atlantic | 741  | X  | X  | X  | X  | X  | X  | -  | -  | -  | X | -  | O | 0106-3006 | 14.50 | -53.00 |
| 4100041 | Mid. Atlantic | 749  | X  | X  | X  | X  | X  | X  | -  | -  | -  | X | -  | O | 0106-3006 | 14.50 | -46.00 |
| 4100043 | Porto Rico    | 749  | X  | X  | X  | X  | X  | X  | -  | -  | -  | X | -  | O | 0106-3006 | 21.00 | -65.00 |
| 4100044 |               | 751  | X  | X  | X  | X  | X  | X  | -  | -  | -  | X | -  | O | 0106-3006 | 21.70 | -58.70 |
| 4100046 |               | 747  | X  | X  | X  | X  | X  | X  | -  | -  | -  | X | -  | O | 0106-3006 | 23.90 | -70.90 |
| 4100047 |               |      | -  | -  | -  | -  | -  | -  | -  | -  | -  | - | -  |   |           | 27.50 | -71.50 |
| 4100048 |               | 747  | X  | X  | X  | X  | X  | X  | -  | -  | -  | X | -  | O | 0106-3006 | 32.00 | -69.60 |
| 4100049 |               | 751  | X  | X  | X  | X  | X  | X  | -  | -  | -  | X | -  | O | 0106-3006 | 27.50 | -53.00 |
| 4100139 |               | 569  | X  | X  | X  | -  | X  | -  | -  | -  | -  | X | -  | L | 0106-3006 | 20.02 | -37.86 |
| 4100300 | Antilles      | 690  | X  | X  | X  | X  | X  | -  | -  | -  | -  | X | -  | T | 0106-3006 | 15.85 | -57.47 |
| 4200059 | Caraibes      | 745  | X  | X  | X  | X  | X  | X  | -  | -  | -  | X | -  | O | 0106-3006 | 15.00 | -67.50 |
| 4400008 | A Nantucket   | 749  | X  | X  | X  | X  | X  | X  | -  | -  | -  | X | -  | O | 0106-3006 | 40.50 | -69.40 |
| 4400011 | D Georges Bk  | 751  | X  | X  | X  | X  | X  | X  | -  | -  | -  | X | -  | O | 0106-3006 | 41.10 | -66.60 |
| 4400018 | SE Cape Cod   | 749  | X  | X  | X  | X  | X  | X  | -  | -  | -  | X | -  | O | 0106-3006 | 41.30 | -69.30 |
| 4400024 | NNE Channel   | 673  | X  | X  | X  | -  | X  | X  | -  | -  | -  | - | -  | O | 0106-3006 | 42.30 | -65.90 |
| 4400137 | E Scotia Sl.  | 699  | X  | X  | X  | X  | X  | X  | -  | -  | -  | - | -  | O | 0106-3006 | 42.30 | -62.00 |
| 4400138 | SW Gd Banks   |      | -  | -  | -  | -  | -  | -  | -  | -  | -  | - | -  |   |           | 44.30 | -53.60 |
| 4400139 | Beanquereau   | 707  | X  | X  | X  | X  | X  | X  | -  | -  | -  | - | -  | O | 0106-3006 | 44.30 | -57.10 |
| 4400140 | Tail of Bk    |      | -  | -  | -  | -  | -  | -  | -  | -  | -  | - | -  |   |           | 43.80 | -51.70 |
| 4400141 | Larentian F   | 679  | X  | X  | X  | X  | X  | X  | -  | -  | -  | - | -  | O | 0106-3006 | 43.00 | -58.00 |
| 4400150 | La Have Bk    | 692  | X  | X  | X  | X  | X  | X  | -  | -  | -  | - | -  | O | 0106-3006 | 42.50 | -64.00 |

## E-SURFMAR DB Monthly Report June 2015

### Buoy-QC statistics from Meteo-France model outputs

*Datend* : Date of the last value received on GTS  
*Recvd* : Total number of values received on GTS  
*GE* : Number of Gross Errors (excluded from bias and sd computations)  
*bias* : Mean differences between observation values and co-located model output values  
*Std* : Standard deviation of differences

#### Air Pressure (hPa), drifting buoys, June 2015

| Datend          | WMO            | Telcom          | Recvd      | GE       | Bias       | Std        |
|-----------------|----------------|-----------------|------------|----------|------------|------------|
| 20150630        | 1300868        | 11686410        | 321        | 0        | 0.3        | 0.3        |
| 20150630        | 1300869        | 11688410        | 702        | 0        | 0.1        | 0.3        |
| 20150630        | 1300870        | 61512860        | 656        | 0        | 0.1        | 0.9        |
| 20150630        | 1300871        | 61516870        | 703        | 0        | 0.6        | 0.3        |
| 20150630        | 1300872        | 61611050        | 701        | 0        | 0.7        | 0.4        |
| 20150630        | 1500681        | 61661310        | 701        | 0        | 1.0        | 0.8        |
| 20150630        | 1500682        | 61663300        | 701        | 0        | 0.5        | 0.8        |
| 20150630        | 1500683        | 61663370        | 701        | 0        | 0.7        | 0.5        |
| 20150630        | 1500684        | 62328350        | 701        | 0        | -0.2       | 0.6        |
| 20150630        | 2500617        | 61767070        | 720        | 0        | -0.3       | 0.2        |
| 20150630        | 2500618        | 11020180        | 702        | 0        | 0.2        | 0.3        |
| 20150630        | 2500620        | 61760090        | 720        | 0        | 0.0        | 0.3        |
| 20150630        | 4100729        | 62321360        | 701        | 0        | 0.1        | 0.5        |
| 20150630        | 4100730        | 62326350        | 701        | 0        | 0.1        | 0.5        |
| 20150630        | 4100731        | 62329360        | 701        | 0        | 0.4        | 0.5        |
| 20150630        | 4100969        | 60213780        | 703        | 0        | -0.3       | 0.5        |
| 20150630        | 4100970        | 60213790        | 701        | 0        | 0.3        | 0.5        |
| 20150630        | 4100971        | 60215900        | 628        | 0        | 0.0        | 0.4        |
| 20150630        | 4100972        | 60217780        | 700        | 0        | 0.2        | 0.4        |
| 20150630        | 4400513        | 61475450        | 701        | 0        | 0.4        | 0.4        |
| 20150630        | 4400515        | 61476450        | 701        | 0        | 0.1        | 0.5        |
| 20150630        | 4400517        | 61477390        | 700        | 0        | 0.2        | 0.5        |
| 20150630        | 4400546        | 11160640        | 702        | 0        | -0.1       | 0.3        |
| 20150630        | 4400547        | 60173710        | 702        | 0        | 0.2        | 0.5        |
| 20150630        | 4400548        | 11799230        | 703        | 0        | 0.1        | 0.4        |
| 20150630        | 4400549        | 60896130        | 701        | 0        | 0.1        | 0.6        |
| 20150630        | 4400550        | 60894140        | 703        | 0        | 0.0        | 0.7        |
| 20150630        | 4400551        | 60892140        | 702        | 0        | 0.2        | 0.5        |
| 20150630        | 4400601        | 60890150        | 701        | 0        | -0.6       | 0.6        |
| <b>20150630</b> | <b>4400606</b> | <b>11162640</b> | <b>702</b> | <b>6</b> | <b>0.1</b> | <b>1.1</b> |
| 20150630        | 4400608        | 11093800        | 692        | 1        | 0.3        | 0.4        |
| 20150630        | 4400609        | 61613050        | 701        | 0        | 0.3        | 0.6        |
| 20150606        | 4400612        | 61511880        | 102        | 0        | -0.3       | 1.0        |
| 20150630        | 4400613        | 11475040        | 702        | 0        | -0.2       | 0.3        |
| 20150630        | 4400614        | 61661340        | 699        | 0        | -0.1       | 0.6        |
| 20150630        | 4400620        | 61667370        | 701        | 0        | 0.2        | 0.5        |
| 20150630        | 4400621        | 61519840        | 702        | 0        | 0.6        | 0.5        |
| 20150629        | 4400622        | 61668320        | 432        | 0        | -0.3       | 0.6        |
| 20150630        | 4400623        | 61669330        | 701        | 0        | -0.3       | 0.5        |
| 20150630        | 4400624        | 11341110        | 684        | 0        | -0.1       | 0.3        |
| 20150630        | 4400625        | 61668340        | 634        | 0        | 0.3        | 0.4        |
| 20150630        | 4400725        | 11027170        | 702        | 0        | 0.2        | 0.4        |
| 20150630        | 4400739        | 61516840        | 701        | 1        | 0.8        | 0.5        |
| 20150630        | 4400740        | 11883820        | 701        | 0        | -0.0       | 0.4        |
| 20150630        | 4400760        | 61662360        | 701        | 0        | -0.3       | 0.5        |
| 20150630        | 4400761        | 61669320        | 701        | 0        | -0.4       | 0.5        |
| 20150630        | 4400762        | 61664310        | 701        | 0        | 0.3        | 0.7        |
| 20150630        | 4400763        | 61667330        | 648        | 0        | 0.1        | 0.6        |
| 20150630        | 4400764        | 61662330        | 701        | 0        | -0.4       | 0.6        |
| 20150630        | 4400768        | 62322360        | 697        | 2        | 0.3        | 0.7        |
| 20150630        | 4400769        | 62328360        | 701        | 0        | 0.1        | 0.5        |
| 20150630        | 4400773        | 60211790        | 600        | 0        | 0.2        | 0.7        |
| 20150630        | 4400774        | 61477400        | 702        | 0        | 0.3        | 0.5        |
| 20150630        | 4400775        | 61476400        | 699        | 0        | 0.4        | 0.5        |
| 20150630        | 4400776        | 61474410        | 700        | 0        | 0.4        | 0.8        |
| 20150630        | 4400778        | 61475430        | 701        | 0        | 0.4        | 0.4        |
| 20150630        | 4400835        | 60218770        | 701        | 0        | -0.1       | 0.3        |
| 20150630        | 4400836        | 60218680        | 701        | 0        | 0.0        | 0.4        |
| 20150630        | 4400837        | 60209590        | 701        | 0        | -0.1       | 0.3        |
| 20150630        | 4400839        | 60205090        | 701        | 0        | -0.0       | 0.3        |
| 20150630        | 4400846        | 60441290        | 700        | 0        | 0.5        | 0.3        |

## E-SURFMAR DB Monthly Report June 2015

|                 |                |                 |            |            |             |            |
|-----------------|----------------|-----------------|------------|------------|-------------|------------|
| 20150630        | 4400847        | 60442280        | 699        | 0          | 0.5         | 0.4        |
| 20150630        | 4400848        | 60448280        | 700        | 0          | 0.2         | 0.3        |
| 20150630        | 4400863        | 60211690        | 701        | 0          | -0.2        | 0.3        |
| 20150630        | 4400866        | 11793240        | 702        | 0          | -0.3        | 0.4        |
| 20150630        | 4400867        | 11593590        | 702        | 0          | -0.3        | 0.4        |
| 20150630        | 4400868        | 11794230        | 702        | 0          | 0.2         | 0.6        |
| 20150630        | 4400871        | 11790240        | 703        | 0          | 0.2         | 0.3        |
| 20150630        | 4400872        | 60202920        | 702        | 0          | -0.4        | 0.4        |
| 20150630        | 4400877        | 60526170        | 701        | 0          | -0.0        | 0.3        |
| 20150630        | 4400878        | 60528170        | 701        | 0          | 0.1         | 0.4        |
| 20150630        | 4400880        | 60556880        | 662        | 0          | -0.2        | 0.7        |
| 20150630        | 4400885        | 60218780        | 701        | 0          | -0.1        | 0.3        |
| 20150630        | 4400887        | 60251440        | 701        | 0          | 0.0         | 0.3        |
| 20150630        | 4400888        | 60359010        | 701        | 0          | 0.0         | 0.3        |
| 20150630        | 4400889        | 60202320        | 701        | 0          | 0.0         | 0.3        |
| 20150630        | 4400890        | 12000230        | 701        | 0          | 0.1         | 0.5        |
| 20150630        | 4400891        | 12007220        | 701        | 0          | -0.0        | 0.3        |
| 20150630        | 4400892        | 60018400        | 703        | 0          | 0.0         | 0.3        |
| 20150630        | 6200513        | 61665360        | 701        | 0          | 0.0         | 0.4        |
| 20150630        | 6200514        | 60203700        | 702        | 0          | -0.0        | 0.3        |
| 20150630        | 6200516        | 11475100        | 702        | 0          | 0.4         | 0.3        |
| <b>20150624</b> | <b>6200536</b> | <b>11599570</b> | <b>541</b> | <b>9</b>   | <b>-0.4</b> | <b>1.1</b> |
| 20150630        | 6200538        | 11460700        | 702        | 0          | -0.1        | 0.6        |
| 20150630        | 6200539        | 60891140        | 701        | 0          | -0.0        | 0.5        |
| 20150630        | 6200552        | 11797240        | 702        | 0          | 0.1         | 0.3        |
| 20150630        | 6200553        | 11165650        | 702        | 0          | 0.1         | 0.3        |
| 20150630        | 6200681        | 11168640        | 702        | 0          | -0.1        | 0.4        |
| 20150630        | 6200695        | 60408990        | 702        | 0          | 0.3         | 0.3        |
| 20150630        | 6200713        | 11246980        | 692        | 0          | -0.1        | 0.4        |
| 20150630        | 6200714        | 11240980        | 688        | 0          | -0.1        | 0.5        |
| 20150630        | 6200940        | 60203850        | 701        | 0          | 0.1         | 0.3        |
| 20150630        | 6200941        | 60207590        | 702        | 0          | -0.2        | 0.3        |
| 20150630        | 6300640        | 60172710        | 702        | 0          | -0.0        | 0.4        |
| 20150630        | 6300644        | 61766070        | 720        | 0          | -0.5        | 0.3        |
| 20150630        | 6400517        | 61619060        | 698        | 0          | 0.5         | 0.6        |
| 20150630        | 6400518        | 60892150        | 496        | 0          | 0.0         | 0.5        |
| 20150630        | 6400519        | 61518850        | 701        | 0          | 0.3         | 0.4        |
| <b>20150630</b> | <b>6400520</b> | <b>11479040</b> | <b>510</b> | <b>108</b> | <b>-0.4</b> | <b>1.2</b> |
| 20150630        | 6400521        | 11470030        | 702        | 0          | -0.2        | 0.3        |
| 20150630        | 6400522        | 61511870        | 690        | 0          | -0.1        | 0.3        |
| 20150630        | 6400523        | 61510870        | 701        | 0          | 0.2         | 0.4        |
| 20150630        | 6400524        | 61619040        | 699        | 0          | -0.1        | 0.3        |
| 20150630        | 6400525        | 60175710        | 702        | 0          | 0.1         | 0.3        |
| 20150630        | 6400526        | 61611070        | 701        | 0          | 0.2         | 0.5        |
| 20150630        | 6400527        | 61514840        | 690        | 0          | 0.6         | 0.4        |
| 20150630        | 6400528        | 61471310        | 323        | 0          | 0.2         | 0.3        |
| 20150630        | 6400529        | 11027150        | 323        | 0          | -0.2        | 0.5        |
| 20150630        | 6400530        | 61470290        | 298        | 0          | 0.2         | 0.3        |
| 20150630        | 6400547        | 61473300        | 298        | 0          | 0.1         | 0.5        |
| 20150630        | 6400548        | 61472290        | 265        | 0          | 0.4         | 0.3        |
| 20150630        | 6400549        | 60898120        | 180        | 0          | -0.2        | 0.3        |
| 20150630        | 6400550        | 11463700        | 179        | 0          | 0.4         | 0.3        |
| 20150630        | 6400551        | 11795230        | 155        | 0          | 0.4         | 0.3        |
| 20150630        | 6400606        | 61515870        | 667        | 0          | 0.8         | 0.5        |
| 20150630        | 6400613        | 60174710        | 702        | 0          | 0.1         | 0.3        |
| 20150630        | 6400614        | 60178700        | 702        | 0          | -0.1        | 0.3        |
| 20150630        | 6400615        | 60173700        | 702        | 0          | 0.5         | 0.3        |
| 20150630        | 6400620        | 60899130        | 700        | 0          | -0.0        | 0.4        |
| 20150630        | 6400621        | 61614070        | 687        | 0          | 0.2         | 0.4        |
| 20150630        | 6400622        | 60172810        | 702        | 0          | 0.0         | 0.3        |
| 20150630        | 6400623        | 11470040        | 702        | 0          | -0.4        | 0.3        |
| 20150630        | 6400665        | 60171710        | 702        | 0          | 0.3         | 0.3        |
| 20150630        | 6400666        | 60179710        | 702        | 0          | 0.3         | 0.3        |
| 20150630        | 6400667        | 61615060        | 703        | 0          | 0.2         | 0.5        |
| 20150630        | 6400668        | 60177860        | 702        | 0          | 0.2         | 0.3        |
| 20150630        | 6400692        | 60172720        | 702        | 0          | 0.2         | 0.3        |
| 20150630        | 6500596        | 61511850        | 700        | 0          | 0.5         | 0.5        |
| 20150630        | 6500599        | 62326370        | 678        | 0          | 0.3         | 0.5        |
| 20150630        | 6500600        | 62326360        | 701        | 0          | -0.1        | 0.4        |
| 20150630        | 6500601        | 62320360        | 701        | 0          | 0.1         | 0.4        |
| 20150630        | 6500602        | 62323360        | 701        | 0          | -0.2        | 0.4        |

## E-SURFMAR DB Monthly Report June 2015

### Air Pressure (hPa), moored buoys, June 2015

| Datend          | WMO            | Telcom | Recvd      | GE       | Bias       | Std        |
|-----------------|----------------|--------|------------|----------|------------|------------|
| 20150630        | 1300130        |        | 713        | 0        | 0.6        | 0.5        |
| 20150630        | 6100001        |        | 717        | 2        | 0.1        | 0.8        |
| 20150630        | 6100002        |        | 703        | 1        | 0.1        | 0.5        |
| 20150630        | 6100197        |        | 715        | 0        | -0.3       | 0.5        |
| 20150630        | 6100198        |        | 716        | 0        | 0.4        | 0.6        |
| 20150630        | 6100280        |        | 689        | 0        | 0.6        | 0.6        |
| 20150630        | 6100281        |        | 718        | 0        | 0.6        | 0.7        |
| <b>20150630</b> | <b>6100417</b> |        | <b>712</b> | <b>0</b> | <b>1.2</b> | <b>0.6</b> |
| 20150630        | 6100430        |        | 714        | 0        | 0.7        | 0.6        |
| <b>20150630</b> | <b>6101003</b> |        | <b>229</b> | <b>0</b> | <b>1.2</b> | <b>0.6</b> |
| 20150630        | 6101007        |        | 239        | 0        | 0.2        | 0.5        |
| 20150620        | 6101008        |        | 129        | 0        | 0.5        | 0.7        |
| 20150630        | 6200001        |        | 720        | 0        | 0.3        | 0.4        |
| 20150630        | 6200024        |        | 716        | 0        | 0.5        | 0.6        |
| 20150630        | 6200025        |        | 717        | 0        | 0.5        | 0.6        |
| 20150630        | 6200027        |        | 237        | 0        | 0.1        | 0.5        |
| 20150630        | 6200029        |        | 700        | 0        | 0.3        | 0.4        |
| 20150630        | 6200030        |        | 674        | 0        | 0.1        | 0.4        |
| 20150630        | 6200081        |        | 719        | 0        | 0.1        | 0.6        |
| 20150630        | 6200082        |        | 715        | 0        | 0.4        | 0.5        |
| 20150608        | 6200084        |        | 188        | 0        | 0.8        | 0.5        |
| 20150630        | 6200085        |        | 714        | 0        | 0.3        | 0.6        |
| 20150630        | 6200086        |        | 480        | 0        | -0.1       | 0.4        |
| 20150630        | 6200091        |        | 716        | 0        | -0.2       | 0.5        |
| 20150630        | 6200092        |        | 715        | 0        | 0.2        | 0.4        |
| 20150630        | 6200093        |        | 715        | 1        | 0.3        | 0.5        |
| 20150630        | 6200094        |        | 715        | 0        | -0.0       | 0.5        |
| 20150630        | 6200095        |        | 720        | 0        | -0.1       | 0.5        |
| 20150630        | 6200163        |        | 720        | 0        | 0.1        | 0.4        |
| 20150630        | 6200191        |        | 647        | 0        | 0.1        | 0.4        |
| 20150630        | 6200303        |        | 720        | 0        | 0.1        | 0.4        |
| 20150630        | 6400045        |        | 718        | 0        | 0.1        | 0.4        |
| 20150630        | 6400046        |        | 717        | 0        | 0.2        | 0.5        |

### Air Temperature (C), moored buoys, June 2015

| Datend          | WMO            | Telcom | Recvd      | GE       | Bias       | Std        |
|-----------------|----------------|--------|------------|----------|------------|------------|
| 20150630        | 1300130        |        | 713        | 0        | 0.2        | 0.5        |
| 20150630        | 6100001        |        | 717        | 0        | 0.1        | 1.3        |
| 20150630        | 6100002        |        | 709        | 0        | -0.2       | 0.9        |
| <b>20150616</b> | <b>6100197</b> |        | <b>371</b> | <b>0</b> | <b>7.8</b> | <b>1.3</b> |
| 20150630        | 6100198        |        | 653        | 1        | -0.0       | 1.4        |
| 20150630        | 6100280        |        | 689        | 0        | 0.8        | 1.1        |
| 20150630        | 6100281        |        | 717        | 0        | 0.1        | 1.0        |
| 20150628        | 6100417        |        | 655        | 0        | 0.1        | 0.5        |
| 20150630        | 6100430        |        | 714        | 0        | 0.9        | 0.6        |
| 20150630        | 6101007        |        | 239        | 1        | 0.7        | 1.1        |
| 20150620        | 6101008        |        | 129        | 0        | 0.2        | 1.1        |
| 20150630        | 6200001        |        | 720        | 0        | -0.0       | 0.4        |
| 20150630        | 6200024        |        | 716        | 0        | 0.8        | 0.7        |
| 20150630        | 6200025        |        | 717        | 0        | -0.1       | 0.7        |
| 20150630        | 6200029        |        | 700        | 0        | 0.2        | 0.5        |
| 20150630        | 6200030        |        | 674        | 0        | -0.3       | 0.6        |
| 20150630        | 6200081        |        | 719        | 0        | -0.0       | 0.5        |
| 20150630        | 6200082        |        | 716        | 0        | 0.1        | 0.4        |
| 20150608        | 6200084        |        | 188        | 0        | 0.1        | 0.9        |
| 20150630        | 6200085        |        | 714        | 0        | 0.4        | 0.8        |
| 20150630        | 6200086        |        | 482        | 0        | 0.1        | 0.7        |
| 20150630        | 6200091        |        | 717        | 0        | 0.1        | 0.5        |
| 20150630        | 6200092        |        | 716        | 0        | 0.2        | 0.4        |
| 20150630        | 6200093        |        | 715        | 0        | -0.1       | 0.4        |
| 20150630        | 6200094        |        | 715        | 0        | 0.2        | 0.4        |
| 20150630        | 6200095        |        | 720        | 0        | -0.4       | 0.7        |
| 20150630        | 6200163        |        | 718        | 0        | 0.2        | 0.6        |
| 20150630        | 6200191        |        | 647        | 0        | 0.1        | 0.7        |
| 20150630        | 6200303        |        | 720        | 0        | -0.0       | 0.5        |
| 20150630        | 6400045        |        | 718        | 0        | -0.2       | 0.4        |
| 20150630        | 6600021        |        | 711        | 0        | 0.2        | 0.5        |
| 20150630        | 6600022        |        | 608        | 0        | 0.6        | 0.9        |
| 20150630        | 6600024        |        | 716        | 0        | 0.4        | 0.6        |

**E-SURFMAR DB Monthly Report  
June 2015**

**Wind direction (deg.), moored buoys, June 2015**

| Datend          | WMO            | Telcom | Recvd      | GE        | Bias      | Std       |
|-----------------|----------------|--------|------------|-----------|-----------|-----------|
| <b>20150630</b> | <b>1300130</b> |        | <b>710</b> | <b>7</b>  | <b>21</b> | <b>21</b> |
| 20150630        | 6100001        |        | 716        | 69        | -1        | 29        |
| 20150630        | 6100002        |        | 700        | 21        | -3        | 22        |
| 20150630        | 6100197        |        | 699        | 20        | -14       | 26        |
| 20150629        | 6100198        |        | 498        | 6         | 3         | 20        |
| 20150630        | 6100280        |        | 626        | 36        | -1        | 31        |
| 20150630        | 6100281        |        | 697        | 79        | 9         | 38        |
| 20150630        | 6100430        |        | 712        | 47        | -6        | 30        |
| 20150630        | 6101003        |        | 229        | 14        | -15       | 37        |
| 20150630        | 6101007        |        | 239        | 29        | -17       | 22        |
| 20150620        | 6101008        |        | 130        | 6         | 6         | 33        |
| 20150630        | 6200001        |        | 719        | 15        | -5        | 18        |
| <b>20150616</b> | <b>6200024</b> |        | <b>365</b> | <b>17</b> | <b>93</b> | <b>30</b> |
| 20150630        | 6200025        |        | 712        | 52        | 4         | 29        |
| 20150630        | 6200027        |        | 193        | 10        | 1         | 33        |
| 20150630        | 6200029        |        | 700        | 3         | 1         | 18        |
| 20150630        | 6200081        |        | 719        | 10        | -2        | 13        |
| 20150630        | 6200082        |        | 715        | 9         | -8        | 17        |
| 20150608        | 6200084        |        | 186        | 4         | -4        | 20        |
| 20150630        | 6200085        |        | 707        | 20        | -4        | 24        |
| 20150630        | 6200086        |        | 479        | 5         | 5         | 18        |
| 20150630        | 6200091        |        | 716        | 5         | -1        | 17        |
| 20150630        | 6200092        |        | 716        | 2         | 4         | 15        |
| 20150630        | 6200093        |        | 714        | 2         | 7         | 14        |
| 20150630        | 6200094        |        | 716        | 7         | 1         | 18        |
| 20150630        | 6200095        |        | 697        | 7         | -5        | 15        |
| 20150630        | 6200163        |        | 719        | 8         | 0         | 18        |
| 20150630        | 6200191        |        | 642        | 13        | -3        | 20        |
| 20150630        | 6200303        |        | 720        | 19        | -3        | 21        |
| 20150630        | 6200442        |        | 675        | 2         | 3         | 16        |
| 20150630        | 6400046        |        | 716        | 1         | 5         | 15        |
| 20150630        | 6600021        |        | 710        | 0         | -2        | 16        |
| 20150630        | 6600022        |        | 607        | 16        | -0        | 25        |
| 20150630        | 6600024        |        | 716        | 5         | -0        | 19        |

**Wind speed rate, moored buoys, June 2015**

| Datend   | WMO     | Telcom | Recvd | GE | Rate | Err |
|----------|---------|--------|-------|----|------|-----|
| 20150630 | 1300130 |        | 710   | 0  | 0.9  | 1.4 |
| 20150630 | 6100001 |        | 716   | 4  | 1.2  | 1.8 |
| 20150630 | 6100002 |        | 700   | 0  | 1.0  | 1.6 |
| 20150630 | 6100197 |        | 699   | 0  | 1.2  | 1.2 |
| 20150629 | 6100198 |        | 498   | 0  | 0.8  | 1.9 |
| 20150630 | 6100280 |        | 626   | 0  | 1.2  | 1.2 |
| 20150630 | 6100281 |        | 697   | 1  | 1.4  | 1.7 |
| 20150630 | 6100430 |        | 712   | 0  | 1.5  | 1.3 |
| 20150630 | 6101003 |        | 229   | 0  | 0.9  | 2.1 |
| 20150630 | 6101007 |        | 239   | 0  | 1.5  | 1.4 |
| 20150620 | 6101008 |        | 130   | 0  | 1.1  | 2.1 |
| 20150630 | 6200001 |        | 719   | 0  | 1.1  | 1.2 |
| 20150616 | 6200024 |        | 365   | 0  | 1.2  | 1.3 |
| 20150630 | 6200025 |        | 712   | 0  | 0.9  | 2.0 |
| 20150630 | 6200027 |        | 193   | 1  | 1.0  | 1.3 |
| 20150630 | 6200029 |        | 700   | 0  | 1.0  | 1.1 |
| 20150630 | 6200081 |        | 719   | 0  | 1.0  | 1.1 |
| 20150630 | 6200082 |        | 715   | 0  | 0.9  | 1.3 |
| 20150608 | 6200084 |        | 186   | 0  | 1.1  | 1.4 |
| 20150630 | 6200085 |        | 707   | 0  | 1.0  | 1.9 |
| 20150630 | 6200086 |        | 479   | 0  | 1.1  | 1.0 |
| 20150630 | 6200091 |        | 716   | 0  | 0.9  | 1.6 |
| 20150630 | 6200092 |        | 716   | 0  | 0.9  | 1.2 |
| 20150630 | 6200093 |        | 714   | 0  | 1.0  | 1.3 |
| 20150630 | 6200094 |        | 716   | 0  | 1.0  | 1.3 |
| 20150630 | 6200095 |        | 697   | 0  | 1.0  | 1.3 |
| 20150630 | 6200163 |        | 719   | 0  | 1.1  | 1.2 |
| 20150630 | 6200191 |        | 642   | 0  | 1.0  | 2.1 |
| 20150630 | 6200303 |        | 720   | 0  | 0.9  | 1.6 |
| 20150630 | 6200442 |        | 675   | 0  | 0.9  | 2.0 |

## E-SURFMAR DB Monthly Report June 2015

|          |         |     |   |     |     |
|----------|---------|-----|---|-----|-----|
| 20150630 | 6400046 | 716 | 0 | 1.0 | 1.3 |
| 20150630 | 6600021 | 710 | 0 | 1.2 | 1.2 |
| 20150630 | 6600022 | 607 | 0 | 1.3 | 1.0 |
| 20150630 | 6600024 | 716 | 0 | 1.2 | 1.3 |

### Comments on QC statistics :

#### Air pressure

1. Metocean buoy WMO **6400520** reported wrong pressure values in early June. The GTS transmission was stopped then restored on 16<sup>th</sup> June with good pressure values.
2. Metocean buoy WMO **6200536** reported a few wrong pressure values when it was caught by a Norwegian seismic vessel. Data transmission was stopped on 23<sup>st</sup> June then released as for a deck drifter. It should be re-deployed in mid-July.
3. Metocean buoy WMO **4400606** temporarily reported wrong pressure data in June for unknown reasons but not enough to have her GTS transmission stopped.
4. Spanish moored buoy WMO **6100417** (Cabo de Palos) and Greek Poseidon buoy WMO **6101003** presented a systematic bias for about 1.2 hPa during the month.

#### Air temperature

5. Spanish moored buoy **6100197** continued to report air temperature values with a systematic bias of about 8°C during the first fifteen days of the month. The GTS transmission was stopped for this parameter on the 16<sup>th</sup> June.

#### Wind

6. Spanish moored buoy WMO **1300130** reported wind direction values with a systematic bias of about 20 degrees.
7. Spanish moored buoy WMO **6200024** continued to report wind direction values which a systematic bias for about 90 degrees before it was stopped on 16<sup>th</sup> June.

Monthly QC statistics and other data quality control tools are available on line at :

<http://www.meteo.shom.fr/qctools/>

The working area of the E-SURFMAR website is open at <http://esurfmar.meteo.fr/wikisurf-wa/> . Ask the E-SURFMAR Programme Manager [Pierre.Blouch@meteo.fr](mailto:Pierre.Blouch@meteo.fr) for the password in case you forgot it. Graphs of system performances June be displayed/downloaded at [http://esurfmar.meteo.fr/doc/r/surfmar/others/e-surfmar\\_monitoring.pdf](http://esurfmar.meteo.fr/doc/r/surfmar/others/e-surfmar_monitoring.pdf).