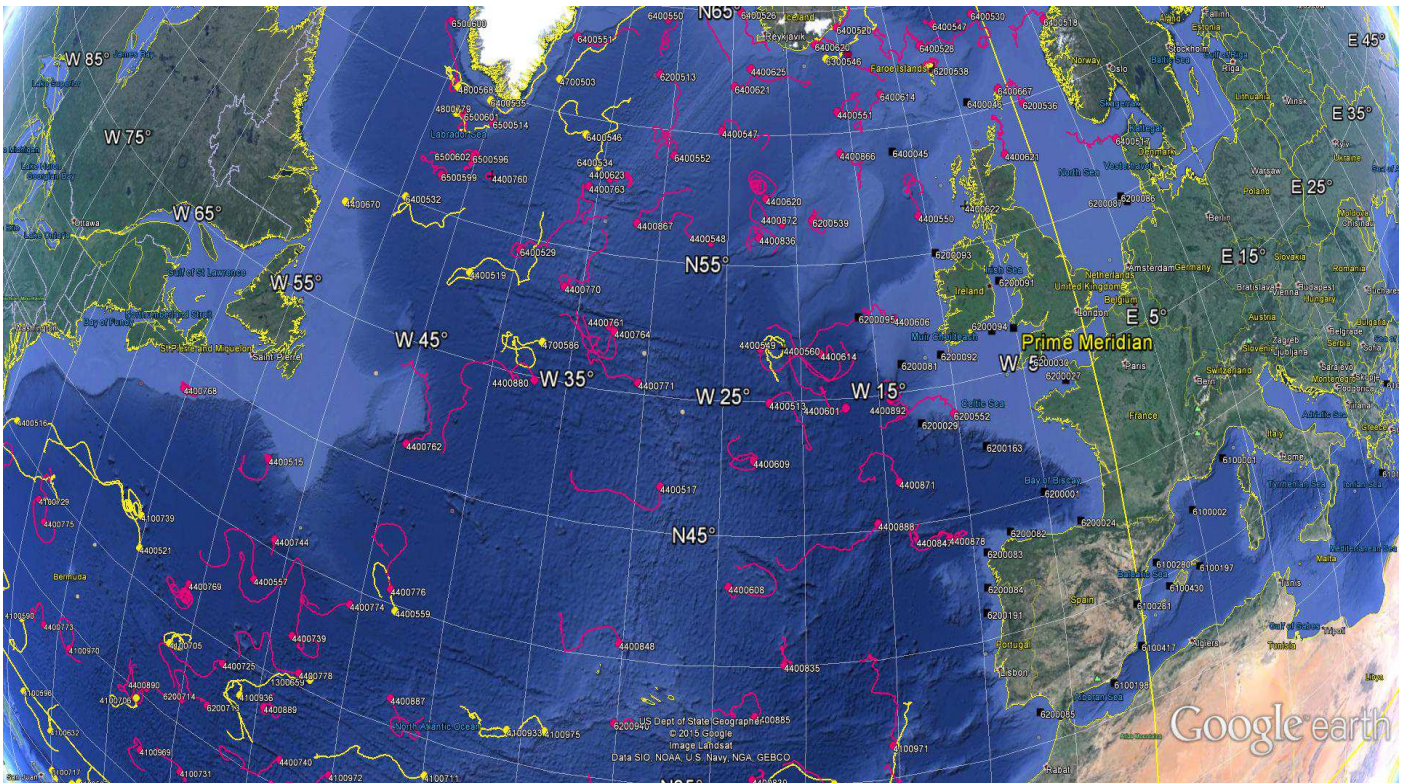


**DATA BUOY MONTHLY REPORT**

**July 2015**

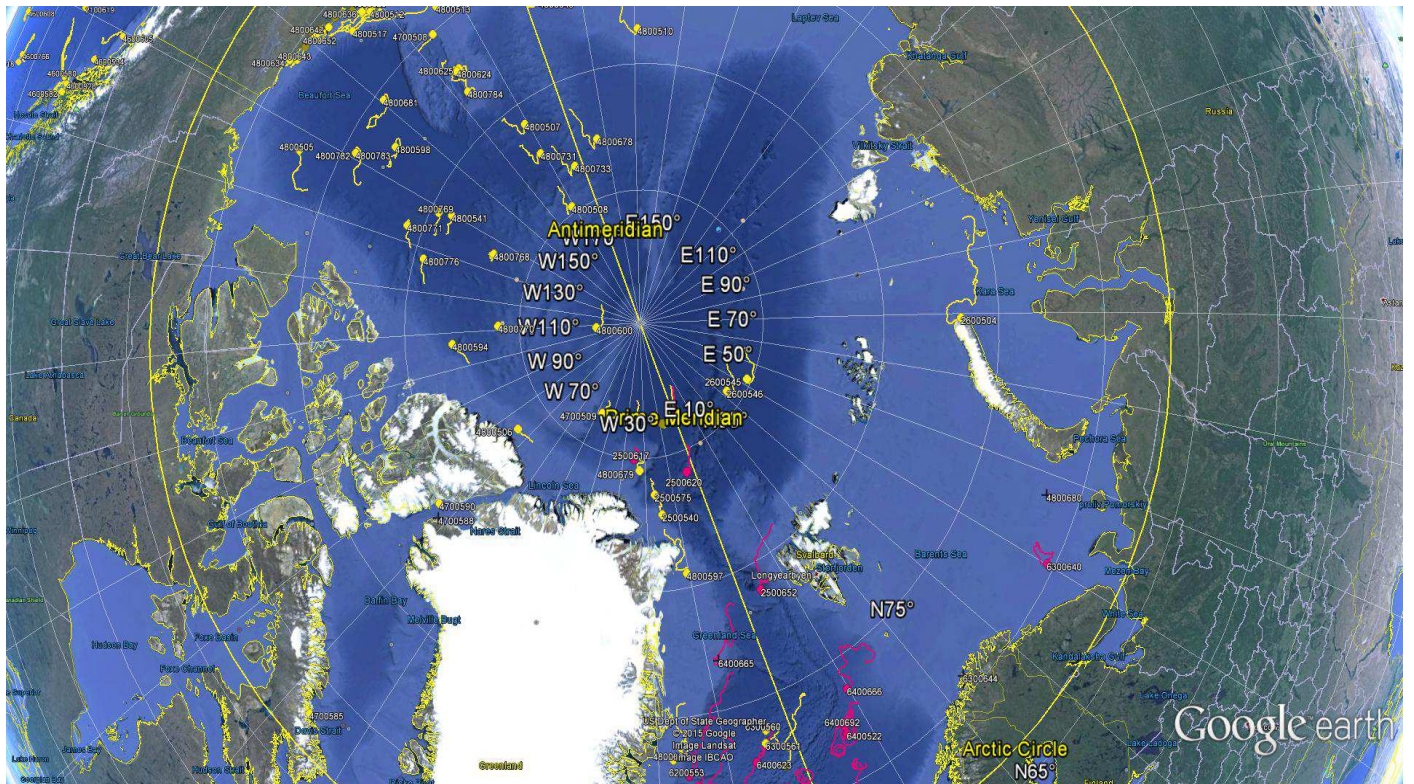


*July 2015 : Operating data buoys in the North Atlantic  
Drifting buoy trajectories : E-SURFMAR (red), others (yellow)  
Moored buoy positions (black)*

*Most recent trajectories may be seen at:  
[http://www.meteo.shom.fr/cartographie/data/kml/MeteoFrance\\_buoys\\_map\\_15.kmz](http://www.meteo.shom.fr/cartographie/data/kml/MeteoFrance_buoys_map_15.kmz)*



# E-SURFMAR DB Monthly Report July 2015



July 2015  
Drifting buoy trajectories in Arctic Ocean and adjacent seas : E-SURFMAR (red), others (yellow)

-----  
**DRIFTING BUOYS**  
-----

**Network status**

By the end of July, **134 Drifting buoys**, reporting air pressure onto the GTS, were in operation in the frame of E-SURFMAR. Out of these, 95 were E-SURFMAR funded Iridium SVP-Bs, including 4 in the Arctic, 7 in AtlantOS activities and 9 HRSST-2 buoys. The remaining buoys were: 39 drifters owned by NOAA and upgraded with barometers by E-SURFMAR.

Information about the availability of buoys for future deployments may be get from the E-SURFMAR wikisite (working area) at: [http://esurfmar.meteo.fr/wikisurf-wa/index.php/Availability\\_of\\_drifting\\_buoys](http://esurfmar.meteo.fr/wikisurf-wa/index.php/Availability_of_drifting_buoys)

Besides E-SURFMAR buoys, 74 drifting buoys were reporting at least air pressure observations from the EUMETNET area of interest. Out of these, only one was reporting Sea Surface Salinity.

**Drifting buoys - New deployments**

WMO	Telcom	Typ	Ow	Dep_Date	DepLat	DepLon	From	Comment
4400557	61568540	MSB	EU	20150715	39.0	-54.8	Norfolk	APL Agate
4400744	62953450	MSB	EU	20150727	39.1	-50.8	Lunenburg	Hermione
4400745	62956440	MSB	EU	20150730	41.5	-46.6	Lunenburg	Hermione
4400746	62850730	MSB	EU	20150731	43.6	-41.6	Lunenburg	Hermione
4400770	11846540	MSB	E2	20150702	56.1	-34.3	Brest	Thalassa
4400771	60554620	PSG	UP	20150702	53.5	-35.1	Brest	Thalassa
6500514	62954450	MSB	EU	20150724	59.1	-43.2	Reykjavik	Nanuq

-----  
**Operating drifting buoys in North Atlantic by the end of the month**

WMO	Telcom	Typ	Ow	nobs	Wi	AT	AP	dP	ST	Wa	Ws	Dr	Sb	U	SS	O	Start_end	Lat	Lon	Age
1300868	11686410	MSB	EU	397	-	-	X	X	X	-	-	X	-	-	-	T	0107-3107	34.52	-15.14	253
1300869	11688410	MSB	EU	744	-	-	X	X	X	-	-	X	-	-	-	T	0107-3107	22.57	-37.93	251
1300870	61512860	MSB	EU	744	-	-	X	X	X	-	-	X	-	-	-	T	0107-3107	32.37	-16.71	141
1300871	61516870	MSB	EU	718	-	-	X	X	X	-	-	X	-	-	-	T	0107-3107	24.37	-31.46	139
1300872	61611050	MSB	EU	741	-	-	X	X	X	-	-	X	-	-	-	T	0107-3107	24.04	-25.73	140
1500681	61661310	MSB	EU	744	-	-	X	X	X	-	-	X	-	-	-	T	0107-3107	-12.65	-6.69	105
1500682	61663300	MSB	EU	744	-	-	X	X	X	-	-	X	-	-	-	T	0107-3107	-11.00	-4.65	106
1500683	61663370	MSB	EU	744	-	-	X	X	X	-	-	X	-	-	-	T	0107-3107	-8.39	-19.28	107
1500684	62328350	MSB	EU	744	-	-	X	X	X	-	-	X	-	-	-	T	0107-3107	-7.34	-13.23	106
2500617	61767070	MSB	EU	744	-	-	X	X	X	-	-	X	-	-	-	T	0107-3107	84.98	-24.95	314
2500618	11020180	MSB	EU	744	-	-	X	X	X	-	-	X	-	-	-	T	0107-3107	86.55	-0.81	102
2500620	61760090	MSB	EU	744	-	-	X	X	X	-	-	X	-	-	-	T	0107-3107	84.20	-2.94	308
2500652	60176700	MSB	EU	395	-	-	X	X	X	-	-	X	-	-	-	T	1507-3107	78.95	4.45	688
4100729	62321360	MSB	EU	744	-	-	X	X	X	-	-	X	-	-	-	T	0107-3107	33.99	-69.01	66
4100730	62326350	MSB	EU	744	-	-	X	X	X	-	-	X	-	-	-	T	0107-3107	29.80	-72.58	65
4100731	62329360	MSB	EU	744	-	-	X	X	X	-	-	X	-	-	-	T	0107-3107	27.75	-54.25	71
4100969	60213780	PSB	UP	744	-	-	X	X	X	-	-	X	-	-	-	T	0107-3107	27.21	-57.22	723
4100970	60213790	PSB	UP	744	-	-	X	X	X	-	-	X	-	-	-	T	0107-3107	28.90	-63.73	722
4100971	60215900	PSB	UP	744	-	-	X	X	X	-	-	X	-	-	-	T	0107-3107	36.44	-15.34	722
4100972	60217780	PSB	UP	732	-	-	X	X	X	-	-	X	-	-	-	T	0107-3107	31.81	-45.15	722
4400513	61475450	DSB	UP	744	-	-	X	X	X	-	-	X	-	-	-	T	0107-3107	49.97	-22.07	145
4400515	61476450	DSB	UP	743	-	-	X	X	X	-	-	X	-	-	-	T	0107-3107	43.37	-52.73	147
4400517	61477390	DSB	UP	744	-	-	X	X	X	-	-	X	-	-	-	T	0107-3107	46.73	-28.55	144
4400546	11160640	MSB	EU	744	-	-	X	X	X	-	-	X	-	-	-	T	0107-3107	26.46	-43.94	864
4400547	60173710	MSB	EU	744	-	-	X	X	X	-	-	X	-	-	-	T	0107-3107	60.13	-25.73	355
4400548	11799230	MSB	E2	744	-	-	X	X	X	-	-	X	-	-	-	T	0107-3107	55.85	-26.25	355
4400549	60896130	MSB	EU	744	-	-	X	X	X	-	-	X	-	-	-	T	0107-3107	51.96	-22.64	328
4400550	60894140	MSB	EU	744	-	-	X	X	X	-	-	X	-	-	-	T	0107-3107	56.48	-10.58	328
4400551	60892140	MSB	EU	744	-	-	X	X	X	-	-	X	-	-	-	T	0107-3107	60.83	-15.92	328
4400557	61568540	DSB	UP	274	-	-	X	X	X	-	-	X	-	-	-	T	2007-3107	38.49	-51.66	17
4400601	60890150	MSB	EU	744	-	-	X	X	X	-	-	X	-	-	-	T	0107-3107	49.67	-17.22	327
4400606	11162640	MSB	EU	744	-	-	X	X	X	-	-	X	-	-	-	T	0107-3107	52.77	-13.48	296

## E-SURFMAR DB Monthly Report July 2015

4400608	11093800	MSB	E2	742	-	-	X	X	X	-	-	X	-	-	-	T	0107-3107	43.13	-24.34	295
4400609	61613050	MSB	EU	744	-	-	X	X	X	-	-	X	-	-	-	T	0107-3107	47.84	-23.04	177
4400613	11475040	MSB	EU	744	-	-	X	X	X	-	-	X	-	-	-	T	0107-3107	28.43	-25.70	878
4400614	61661340	MSB	EU	725	-	-	X	X	X	-	-	X	-	-	-	T	0107-3107	51.73	-18.68	458
4400620	61667370	MSB	EU	744	-	-	X	X	X	-	-	X	-	-	-	T	0107-3107	57.56	-22.19	457
4400621	61519840	MSB	EU	743	-	-	X	X	X	-	-	X	-	-	-	T	0107-3107	58.12	-2.31	538
4400623	61669330	MSB	EU	744	-	-	X	X	X	-	-	X	-	-	-	T	0107-3107	57.84	-34.27	176
4400624	11341110	YSB	EU	734	-	-	X	X	X	-	-	X	-	-	-	T	0107-3107	24.78	-25.20	963
4400625	61668340	MSB	EU	730	-	-	X	X	X	-	-	X	-	-	-	T	0107-3107	62.65	-23.32	456
4400725	11027170	MSB	EU	744	-	-	X	X	X	-	-	X	-	-	-	T	0107-3107	34.24	-52.52	1134
4400739	61516840	MSB	EU	744	-	-	X	X	X	-	-	X	-	-	-	T	0107-3107	37.06	-48.58	424
4400740	11883820	PSB	UP	744	-	-	X	X	X	-	-	X	-	-	-	T	0107-3107	31.41	-48.11	1119
4400744	62953450	MSB	EU	59	-	-	X	X	X	-	-	X	-	-	-	T	2907-3107	40.49	-50.95	3
4400745	62956440	MSB	EU	29	-	-	X	X	X	-	-	X	-	-	-	T	3007-3107	41.53	-46.63	2
4400746	62850730	MSB	EU	3	-	-	X	X	X	-	-	X	-	-	-	T	3007-3107	43.56	-41.62	1
4400761	61669320	MSB	EU	744	-	-	X	X	X	-	-	X	-	-	-	T	0107-3107	52.37	-32.75	176
4400762	61664310	MSB	EU	744	-	-	X	X	X	-	-	X	-	-	-	T	0107-3107	46.24	-44.25	175
4400763	61667330	MSB	EU	621	-	-	X	X	X	-	-	X	-	-	-	T	0107-3107	57.41	-35.75	139
4400764	61662330	MSB	EU	744	-	-	X	X	X	-	-	X	-	-	-	T	0107-3107	52.20	-32.35	138
4400768	62322360	MSB	EU	744	-	-	X	X	X	-	-	X	-	-	-	T	0107-3107	43.86	-60.21	70
4400769	62328360	MSB	EU	744	-	-	X	X	X	-	-	X	-	-	-	T	0107-3107	36.61	-55.80	71
4400770	11846540	MSB	EU	683	-	-	X	X	X	-	-	X	-	-	-	T	0307-3107	53.53	-36.17	28
4400771	60554620	PSG	UP	683	-	-	X	X	X	-	-	X	-	-	-	T	0307-3107	50.44	-30.44	30
4400773	60211790	PSB	UP	659	-	-	X	X	X	-	-	X	-	-	-	T	0107-3107	28.55	-66.28	748
4400774	61477400	DSB	UP	742	-	-	X	X	X	-	-	X	-	-	-	T	0107-3107	39.39	-45.54	258
4400775	61476400	DSB	UP	744	-	-	X	X	X	-	-	X	-	-	-	T	0107-3107	33.34	-68.05	258
4400776	61474410	DSB	UP	744	-	-	X	X	X	-	-	X	-	-	-	T	0107-3107	40.61	-43.32	257
4400778	61475430	DSB	UP	743	-	-	X	X	X	-	-	X	-	-	-	T	0107-3107	35.66	-47.77	256
4400835	60218770	PSB	UP	744	-	-	X	X	X	-	-	X	-	-	-	T	0107-3107	40.10	-21.20	515
4400836	60218680	PSB	UP	744	-	-	X	X	X	-	-	X	-	-	-	T	0107-3107	56.08	-22.71	515
4400837	60209490	PSB	UP	744	-	-	X	X	X	-	-	X	-	-	-	T	0107-3107	30.12	-19.87	515
4400839	60205090	PSB	UP	744	-	-	X	X	X	-	-	X	-	-	-	T	0107-3107	35.43	-22.79	515
4400846	60441290	DSB	UP	742	-	-	X	X	X	-	-	X	-	-	-	T	0107-3107	34.02	-27.69	552
4400847	60442280	DSB	UP	743	-	-	X	X	X	-	-	X	-	-	-	T	0107-3107	44.17	-10.97	552
4400848	60448280	DSB	UP	744	-	-	X	X	X	-	-	X	-	-	-	T	0107-3107	40.65	-30.20	551
4400863	60211690	PSB	UP	744	-	-	X	X	X	-	-	X	-	-	-	T	0107-3107	28.94	-47.59	746
4400866	11793240	MSB	E2	744	-	-	X	X	X	-	-	X	-	-	-	T	0107-3107	59.21	-16.10	406
4400867	11593590	MSB	EU	744	-	-	X	X	X	-	-	X	-	-	-	T	0107-3107	56.31	-31.72	404
4400868	11794230	MSB	E2	744	-	-	X	X	X	-	-	X	-	-	-	T	0107-3107	28.46	-42.09	815
4400871	11790240	MSB	E2	744	-	-	X	X	X	-	-	X	-	-	-	T	0107-3107	46.73	-14.19	400
4400872	60202920	MSB	EU	744	-	-	X	X	X	-	-	X	-	-	-	T	0107-3107	56.60	-21.02	400
4400877	60526170	PSB	UP	744	-	-	X	X	X	-	-	X	-	-	-	T	0107-3107	34.69	-17.92	543
4400878	60528170	PSB	UP	744	-	-	X	X	X	-	-	X	-	-	-	T	0107-3107	44.30	-11.44	543
4400880	60656880	PSB	UP	725	-	-	X	X	X	-	-	X	-	-	-	T	0107-3107	49.90	-37.07	544
4400885	60218780	PSB	UP	744	-	-	X	X	X	-	-	X	-	-	-	T	0107-3107	38.05	-22.74	428
4400887	60251440	PSB	UP	744	-	-	X	X	X	-	-	X	-	-	-	T	0107-3107	36.26	-42.28	430
4400888	60359010	PSB	UP	744	-	-	X	X	X	-	-	X	-	-	-	T	0107-3107	45.26	-15.65	428
4400889	60202320	PSB	UP	744	-	-	X	X	X	-	-	X	-	-	-	T	0107-3107	33.41	-49.51	429
4400890	12000230	PSB	UP	744	-	-	X	X	X	-	-	X	-	-	-	T	0107-3107	30.61	-57.30	428
4400891	12007220	PSB	UP	744	-	-	X	X	X	-	-	X	-	-	-	T	0107-3107	25.10	-39.56	426
4400892	60018400	PSB	UP	744	-	-	X	X	X	-	-	X	-	-	-	T	0107-3107	49.79	-14.29	427
6200513	61665360	MSB	EU	744	-	-	X	X	X	-	-	X	-	-	-	T	0107-3107	62.18	-31.43	177
6200514	60203700	MSB	E2	744	-	-	X	X	X	-	-	X	-	-	-	T	0107-3107	69.58	-2.01	890
6200516	11475100	MSB	EU	744	-	-	X	X	X	-	-	X	-	-	-	T	0107-3107	21.98	-36.49	816
6200536	11599570	MSB	EU	514	-	-	X	X	X	-	-	X	-	-	-	T	1007-3107	59.86	0.83	418
6200539	60891140	MSB	EU	744	-	-	X	X	X	-	-	X	-	-	-	T	0107-3107	56.71	-18.70	330
6200552	11797240	MSB	E2	744	-	-	X	X	X	-	-	X	-	-	-	T	0107-3107	48.94	-10.25	295
6200553	11165650	MSB	EU	744	-	-	X	X	X	-	-	X	-	-	-	T	0107-3107	72.56	-15.72	860
6200681	11168640	MSB	EU	744	-	-	X	X	X	-	-	X	-	-	-	T	0107-3107	27.29	-24.41	988
6200695	60408990	MSB	E2	744	-	-	X	X	X	-	-	X	-	-	-	T	0107-3107	26.05	-42.30	816
6200713	11246980	YSB	EU	737	-	-	X	X	X	-	-	X	-	-	-	T	0107-3107	31.92	-53.04	962
6200714	11240980	YSB	EU	740	-	-	X	X	X	-	-	X	-	-	-	T	0107-3107	31.38	-54.75	959
6200940	60203850	PSB	UP	744	-	-	X	X	X	-	-	X	-	-	-	T	0107-3107	37.46	-30.13	425
6200941	61516840	PSB	UP	744	-	-	X	X	X	-	-	X	-	-	-	T	0107-3107	33.52	-20.74	425
6300640	60172710	MSB	EU	744	-	-	X	X	X	-	-	X	-	-	-	T	0107-3107	70.38	40.06	717
6400517	61619060	MSB	EU	725	-	-	X	X	X	-	-	X	-	-	-	T	0107-3107	57.15	8.03	262
6400518	60892150	MSB	EU	744	-	-	X	X	X	-	-	X	-	-	-	T	0107-3107	62.78	6.42	261
6400519	61518850	MSB	EU	744	-	-	X	X	X	-	-	X	-	-	-	T	0107-3107	67.68	9.73	195
6400521	11470030	MSB	EU	745	-	-	X	X	X	-	-	X	-	-	-	T	0107-3107	71.06	-3.20	810
6400522	61511870	MSB	EU	624	-	-	X	X	X	-	-	X	-	-	-	T	0107-3107	72.11	6.84	343
6400523	61510870	MSB	EU	744	-	-	X	X	X	-	-	X	-	-	-	T	0107-3107	63.58	-3.02	265
6400524	61619040	MSB	EU	740	-	-	X	X	X	-	-	X	-	-	-	T	0107-3107	66.66	12.60	265
6400525	60175710	MSB	EU	744	-	-	X	X	X	-	-	X	-	-	-	T	0107-3107	69.70	-9.80	714
6400526	61611070	MSB	EU	722	-	-	X	X	X	-	-	X	-	-	-	T	0107-3107	64.99	-24.26	263
6400527	61514840	MSB	EU	743	-	-	X	X	X	-	-	X	-	-	-	T	0107-3107	65.60	-30.60	262
6400528	61471310	DSB	UP	744	-	-	X	X	X	-	-	X	-	-	-	T	0107-3107	63.10	-7.16	45

## E-SURFMAR DB Monthly Report July 2015

6400529	11027150	MSB	EU	744	-	-	X	X	-	-	-	X	-	-	-	T	0107-3107	54.52	-39.82	46
6400530	61470290	DSB	UP	744	-	-	X	X	X	-	-	X	-	-	-	T	0107-3107	63.96	-0.93	45
6400547	61473300	DSB	UP	742	-	-	X	X	X	-	-	X	-	-	-	T	0107-3107	63.90	-5.24	44
6400549	60898120	MSB	EU	744	-	-	X	X	X	-	-	X	-	-	-	T	0107-3107	63.16	-14.24	42
6400550	11463700	MSB	UP	744	-	-	X	X	X	-	-	X	-	-	-	T	0107-3107	64.47	-31.37	39
6400551	11795230	MSB	E2	744	-	-	X	X	X	-	-	X	-	-	-	T	0107-3107	63.14	-39.62	39
6400552	10822640	MSB	EU	731	-	-	X	X	X	-	-	X	-	-	-	T	0107-3107	59.05	-29.46	36
6400606	61515870	MSB	EU	744	-	-	X	X	X	-	-	X	-	-	-	T	0107-3107	63.69	0.82	191
6400613	60174710	MSB	EU	744	-	-	X	X	X	-	-	X	-	-	-	T	0107-3107	72.09	-14.63	699
6400614	60178700	MSB	EU	744	-	-	X	X	X	-	-	X	-	-	-	T	0107-3107	61.39	-11.90	695
6400615	60173700	MSB	EU	744	-	-	X	X	X	-	-	X	-	-	-	T	0107-3107	71.44	-12.78	630
6400620	60899130	MSB	EU	739	-	-	X	X	X	-	-	X	-	-	-	T	0107-3107	63.63	-17.22	126
6400621	61614070	MSB	EU	711	-	-	X	X	X	-	-	X	-	-	-	T	0107-3107	61.90	-24.75	125
6400622	60172810	MSB	EU	744	-	-	X	X	X	-	-	X	-	-	-	T	0107-3107	69.63	4.38	715
6400623	11470040	MSB	EU	744	-	-	X	X	X	-	-	X	-	-	-	T	0107-3107	72.56	-6.08	811
6400665	60171710	MSB	EU	666	-	-	X	X	X	-	-	X	-	-	-	T	0107-2807	76.98	-7.94	608
6400666	60179710	MSB	EU	744	-	-	X	X	X	-	-	X	-	-	-	T	0107-3107	73.71	9.81	611
6400667	61615060	MSB	EU	734	-	-	X	X	S	-	-	X	-	-	-	T	0107-3107	60.70	-1.00	583
6400668	60177860	MSB	EU	744	-	-	X	X	X	-	-	X	-	-	-	T	0107-3107	71.48	-8.78	587
6400692	60172720	MSB	EU	744	-	-	X	X	X	-	-	X	-	-	-	T	0107-3107	72.43	7.05	526
6500514	62954450	MSB	EU	107	-	-	X	X	X	-	-	X	-	-	-	T	2707-3107	58.95	-44.64	5
6500596	61511850	MSB	EU	734	-	-	X	X	X	-	-	X	-	-	-	T	0107-3107	57.43	-45.33	408
6500599	62326370	MSB	EU	744	-	-	X	X	X	-	-	X	-	-	-	T	0107-3107	56.37	-47.28	83
6500600	62326360	MSB	EU	744	-	-	X	X	X	-	-	X	-	-	-	T	0107-3107	62.24	-51.84	82
6500601	62320360	MSB	EU	744	-	-	X	X	X	-	-	X	-	-	-	T	0107-3107	58.89	-47.24	80
6500602	62323360	MSB	EU	744	-	-	X	X	X	-	-	X	-	-	-	T	0107-3107	57.55	-45.17	80

### ----- Operating AtlantOS drifting buoys by the end of the month

WMO	Telcom	Typ	Ow	nobs	Wi	AT	AP	dP	ST	Wa	Ws	Dr	Sb	U	SS	O	Start_end	Lat	Lon	Age
1500681	61661310	MSB	EU	744	-	-	X	X	X	-	-	X	-	-	-	T	0107-3107	-12.65	-6.69	105
1500682	61663300	MSB	EU	744	-	-	X	X	X	-	-	X	-	-	-	T	0107-3107	-11.00	-4.65	106
1500683	61663370	MSB	EU	744	-	-	X	X	X	-	-	X	-	-	-	T	0107-3107	-8.39	-19.28	107
1500684	62328350	MSB	EU	744	-	-	X	X	X	-	-	X	-	-	-	T	0107-3107	-7.34	-13.23	106

### ----- Drifting buoys which ceased to be operational

WMO	Telcom	Typ	Ow	End_Date	Lat	Lon	Age	Cause
6300644	61766070	MSB	EU	20150707	70.8	23.3	279	Unknown
6400520	11479040	MSB	EU	20150727	64.3	-14.9	812	Ashore in Iceland

### ----- Non-operating drifting buoys reporting GTS data

WMO	Telcom	Typ	Ow	nobs	Wi	AT	AP	dP	ST	Wa	Ws	Dr	Sb	U	SS	O	Start_end	Lat	Lon	Age
2500624	60247420	MSB	EU	744	-	-	-	-	X	-	-	X	-	-	-	T	0107-3107	61.69	-13.66	700
4400604	11794240	MSB	E2	744	-	-	-	-	X	-	-	X	-	-	-	T	0107-3107	43.95	-33.97	297
6500595	11595570	MSB	EU	744	-	-	-	-	X	-	-	X	-	-	-	T	0107-3107	50.93	-45.23	410

### ----- Non-operating drifting buoys which ceased to emit

WMO	Telcom	Typ	Ow	End_Date	Lat	Lon	Age	Cause
4400622	61668320	MSB	EU	20150708	56.5	-6.8	433	Ashore in Scotland
4400760	61662360	MSB	EU	20150722	56.9	-43.3	167	Unknown
6200538	11460700	MSB	UP	20150718	62.1	-6.4	404	Unknown
6400548	61472290	DSB	UP	20150717	65.8	2.0	29	Unknown

# E-SURFMAR DB Monthly Report July 2015

-----  
Other operating drifting buoys inside the EUMETNET area by the end of the month

WMO	Telcom	Typ	Ow	nobs	Wi	AT	AP	dP	ST	Wa	Ws	Dr	Sb	U	SS	O	Start_end	Lat	Lon
1300515	114951	AOML		718	-	-	X	-	X	-	-	X	-	-	-	L	0107-3107	23.61	-46.17
1300517	114943	AOML		703	-	-	X	-	X	-	-	X	-	-	-	L	0107-3107	13.86	-39.07
1300519	127004	AOML		733	-	-	X	X	X	-	-	X	-	-	-	L	0107-3107	20.09	-38.65
1300523	114877	AOML		713	-	-	X	-	X	-	-	X	-	-	-	L	0107-3107	15.95	-65.73
1300525	127003	AOML		733	-	-	X	X	X	-	-	X	-	-	-	L	0107-3107	6.54	-32.39
1300530	114916	AOML		712	-	-	X	-	X	-	-	X	-	-	-	L	0107-3107	9.60	-28.55
1300531	114921	AOML		713	-	-	X	-	X	-	-	X	-	-	-	L	0107-3107	12.07	-52.68
1300569	114880	AOML		693	-	-	X	-	X	-	-	X	-	-	-	L	0107-3107	26.56	-30.80
1300570	116474	AOML		739	-	-	X	-	X	-	-	X	-	-	-	L	0107-3107	35.09	-18.51
1300572	127002	AOML		741	-	-	X	X	X	-	-	X	-	-	-	L	0107-3107	30.51	-29.77
1300633	109491	AOML		743	-	-	X	X	X	-	-	X	-	-	-	L	0107-3107	34.27	-29.28
1300659	11910180	UKMO		744	-	-	X	X	X	-	-	X	-	-	-	T	0107-3107	35.62	-47.06
1300660	11022040	UKMO		744	-	-	X	X	X	-	-	X	-	-	-	T	0107-3107	28.70	-43.39
1300661	62325770	UKMO		744	-	-	X	X	X	-	-	X	-	-	-	T	0107-3107	13.39	-27.36
1300662	11098800	UKMO		743	-	-	X	X	X	-	-	X	-	-	-	T	0107-3107	30.03	-47.88
1500951	10450430	CMM		712	-	-	X	X	X	-	-	X	-	-	-	T	0107-3107	2.54	3.45
2100942	119223	UKMO		734	-	-	X	X	X	-	-	X	-	-	-	L	0107-3107	26.99	-37.08
2500540		APL		744	-	-	X	X	X	-	-	-	-	-	-	L	0107-3107	82.88	-14.82
2500575				742	-	-	X	X	X	-	-	-	-	-	-	L	0107-3107	83.65	-16.71
2600537	61369210	PSC		744	-	-	X	X	X	-	-	X	-	-	-	O	0107-3107	72.01	-2.48
2600546				422	-	X	X	X	-	-	-	X	-	-	-	O	1407-3107	85.67	32.59
3100515	114946	AOML		714	-	-	X	-	X	-	-	X	-	-	-	L	0107-3107	20.93	-62.75
3100717	61614160	CMM		744	-	-	X	X	X	-	-	X	-	-	-	T	0107-3107	20.07	-64.80
3100720	62652340	CMM	1488	-	-	X	X	X	-	-	-	X	-	-	X	T	0107-3107	2.25	3.34
3100863	61611040	CMM		744	-	-	X	X	X	-	-	X	-	-	-	T	0107-3107	18.44	-57.45
4100564	109221	AOML		715	-	-	X	-	X	-	-	X	-	-	-	L	0107-3107	28.82	-32.23
4100580	132677	AOML		738	-	-	X	X	X	-	-	X	-	-	-	L	0107-3107	23.34	-50.23
4100590	132676	AOML		743	-	-	X	X	X	-	-	X	-	-	-	L	0107-3107	27.28	-68.54
4100591	132678	AOML		723	-	-	X	X	X	-	-	X	-	-	-	L	0107-3107	19.27	-52.47
4100594	127029	AOML		737	-	-	X	X	X	-	-	X	-	-	-	L	0107-3107	25.14	-55.61
4100596	11473050	CMM		743	-	-	X	X	X	-	-	X	-	-	-	T	0107-3107	23.06	-67.86
4100597	61512840	AOML		744	-	-	X	X	X	-	-	X	-	-	-	T	0107-3107	21.63	-62.05
4100600	61618040	AOML		744	-	-	X	X	X	-	-	X	-	-	-	T	0107-3107	19.70	-60.66
4100632	11474050	CMM		744	-	-	X	X	X	-	-	X	-	-	-	T	0107-3107	22.86	-64.85
4100635	61475300	CMM		370	-	-	X	X	X	-	-	X	-	-	-	T	1607-3107	20.25	-41.79
4100637	62859910	CMM		343	-	-	X	X	X	-	-	X	-	-	-	T	1707-3107	15.99	-46.68
4100638	62955440	CMM		362	-	-	X	X	X	-	-	X	-	-	-	T	1607-3107	15.07	-45.12
4100705	11596570	AOML		744	-	-	X	X	X	-	-	X	-	-	-	T	0107-3107	33.52	-56.26
4100706	11595580	AOML		744	-	-	X	X	X	-	-	X	-	-	-	T	0107-3107	29.72	-57.94
4100707	62957110	CMM		342	-	-	X	X	X	-	-	X	-	-	-	T	1707-3107	12.28	-50.04
4100708	62958100	CMM		332	-	-	X	X	X	-	-	X	-	-	-	T	1807-3107	6.27	-47.11
4100711	11477030	CMM		744	-	-	X	X	X	-	-	X	-	-	-	T	0107-3107	33.46	-39.88
4100739	11912120	UKMO		744	-	-	X	X	X	-	-	X	-	-	-	T	0107-3107	37.85	-60.31
4100933	101721	AOML		742	-	-	X	X	X	-	-	X	-	-	-	L	0107-3107	36.38	-35.76
4100936	109488	AOML		743	-	-	X	X	-	-	-	X	-	-	-	L	0107-3107	33.32	-51.10
4100975	109439	AOML		739	-	-	X	X	X	-	-	X	-	-	-	L	0107-3107	36.66	-33.74
4400505	98087	ICEP	1519	-	-	X	X	X	-	-	-	-	-	-	-	L	0107-3107	33.84	-15.55
4400519	70840			744	-	-	X	X	X	-	-	X	-	-	-	L	0107-3107	53.18	-42.95
4400521				396	-	-	X	X	X	-	-	X	-	-	-	L	1507-3107	36.50	-59.83
4400558	123286	AOML		742	-	-	X	X	X	-	-	X	-	-	-	L	0107-3107	31.21	-42.86
4400559				344	-	-	X	X	X	-	-	X	-	-	-	L	1707-3107	39.83	-42.83
4400560	126480	AOML		565	-	-	X	X	-	-	-	X	-	-	-	L	0107-2807	51.98	-21.10
4400670				247	-	-	X	X	S	-	-	X	-	-	-	O	2107-3107	53.93	-53.80
4400896	109438	AOML		742	-	-	X	X	X	-	-	X	-	-	-	L	0107-3107	28.68	-44.00
4700503		APL		745	-	-	X	X	X	-	-	-	-	-	-	L	0107-3107	61.28	-40.13
4700509				742	-	X	X	X	-	-	-	X	-	-	-	O	0107-3107	86.34	-46.88
4700585	11541430	EC		744	-	-	X	X	X	-	-	-	-	-	-	O	0107-3107	68.22	-66.65
4700586	11541440	EC		744	-	-	X	X	X	-	-	X	-	-	-	O	0107-3107	51.34	-36.97
4800568	61363210	PSC		744	-	-	X	X	X	-	-	X	-	-	-	O	0107-3107	59.83	-48.61
4800597	100009	PSC	1250	X	X	X	-	-	-	-	-	X	-	-	-	O	0107-3107	80.55	-10.54
4800627				570	-	-	X	X	X	-	-	-	-	-	-	L	0607-3107	73.30	-17.77
4800679	63233150	APL		649	-	-	X	X	X	-	-	X	-	-	-	T	0107-3107	84.57	-22.31
4800778	60894080	EC		640	-	-	X	X	X	-	-	-	-	-	-	O	0107-3107	71.00	-24.91
4800779	60890090	EC		744	-	X	X	X	-	-	-	-	-	-	-	O	0107-3107	58.85	-47.96
6300546	61361200	PSC		744	-	-	X	X	X	-	-	X	-	-	-	O	0107-3107	63.01	-16.34
6300560				744	-	-	X	-	X	-	-	X	-	-	-	L	0107-3107	73.72	-3.55
6300561				744	-	-	X	-	X	-	-	X	-	-	-	L	0107-3107	73.21	-4.12
6300923				744	-	X	X	X	-	-	-	X	-	-	-	O	0107-3107	86.61	-1.89
6400532				744	-	-	X	X	X	-	-	-	-	-	-	L	0107-3107	55.09	-49.39
6400534			1849	-	-	X	X	X	-	-	-	-	-	-	-	L	0107-3107	58.23	-35.37
6400535				680	-	-	X	X	X	-	-	-	-	-	-	L	0107-3107	59.74	-45.44

## E-SURFMAR DB Monthly Report July 2015

6400537	248	X	X	X	X	-	-	-	X	-	-	-	O	0107-3107	86.19	-8.38
6400538	744	-	X	X	X	-	-	-	X	-	-	-	O	0107-3107	86.52	-25.47
6400546	738	-	-	X	X	X	-	-	X	-	-	-	T	0107-3107	59.35	-36.77

### ----- Abbreviations -----

WMO : WMO id.  
 Argos : Argos id.  
 Typ : Buoy type  
     - first character : Manufacturer (C = ConMar , M = Metocean, P = Pacific Gyre  
   T = Technocean, Y = Marlin-Yug...)  
     - second character : Main type (F = FGGE, I = ICEB, S = SVP)  
     - third character : Sub type (B = barometer buoy, W = Wind buoy,  
   S = Salinity buoy)  
 Ow : Buoy owner (country code or EU for EUCOS, E2 for HRSST-2 buoys, UP for upgraded  
 buoys)  
 Owner : Buoy owner for non EUCOS buoys  
 Nobs : number of GTS reports received at Meteo-France  
 Parameters (X = OK, S = stopped, - = not measured) :  
     Wi : Wind  
     AT : Air Temperature  
     AP : Air Pressure  
     dP : Air pressure tendency  
     ST : Sea surface Temperature  
     Wa : Wave period and height  
     Ws : Wave spectra  
     Dr : Drogue presence  
     Sb : Subsurface temperature  
     U : Relative humidity  
     SS : Sea surface Salinity  
 O : Origin of the reports (T = Argos Toulouse, L = Argos Largo, O = Other)  
 Start\_end : first and last dates of the month for which GTS data were received at Meteo-France  
 Lat : Latitude of the latest position  
 Lon : Longitude of the latest position  
 Age : Age of the buoy (days)  
  
 DepDate : Date of deployment  
 DepLat : Latitude of deployment  
 Dep Lon : Longitude of Deployment  
 From : Harbour of departure  
  
 Definition : An operating drifting buoy is a buoy providing at least air pressure or wind  
 (direction and velocity) data.

**E-SURFMAR DB Monthly Report  
July 2015**

-----  
**MOORED BUOYS**  
-----

**Former EGOS stations (K-pattern and Hydrosphere)**

WMO	Name	nobs	Wi	AT	AP	dP	ST	Wa	Ws	Dr	Sb	U	SS	O	Start_end	Lat	Lon
6100001	Cote d'Azur	740	X	X	X	X	X	-	X	-	-	X	-	T	0107-3107	43.40	7.80
<b>6100002</b>	<b>Lion</b>	<b>733</b>	<b>X</b>	<b>X</b>	<b>X</b>	<b>X</b>	<b>X</b>	-	<b>X</b>	-	-	<b>X</b>	-	<b>T</b>	<b>0107-3107</b>	<b>42.10</b>	<b>4.70</b>
6200001	Gascogne	744	X	X	X	X	X	-	-	-	-	X	-	O	0107-3107	45.30	-5.00
6200029	K1	735	X	X	X	-	X	X	-	-	-	X	-	O	0107-3107	48.70	-12.50
6200081	K2	742	X	X	X	X	X	X	-	-	-	-	-	O	0107-3107	51.00	-13.20
6200090	M1	-	-	-	-	-	-	-	-	-	-	-	-	-	-	53.10	-11.20
6200091	M2	740	X	X	X	-	X	X	-	-	-	X	-	O	0107-3107	53.50	-5.40
6200092	M3	740	X	X	X	-	-	X	-	-	-	X	-	O	0107-3107	51.20	-10.50
6200093	M4	740	X	X	X	-	X	-	-	-	-	-	-	O	0107-3107	54.70	-9.10
6200094	M5	740	X	X	X	-	X	X	-	-	-	X	-	O	0107-3107	51.70	-6.70
<b>6200095</b>	<b>M6</b>	<b>841</b>	<b>X</b>	<b>X</b>	<b>X</b>	<b>X</b>	<b>X</b>	<b>X</b>	-	-	-	<b>X</b>	-	<b>O</b>	<b>0107-3107</b>	<b>53.10</b>	<b>-15.90</b>
6200105	K4	-	-	-	-	-	-	-	-	-	-	-	-	-	-	55.80	-11.40
6200108	K3	-	-	-	-	-	-	-	-	-	-	-	-	-	-	53.50	-19.50
6200163	Brittany	743	X	X	X	X	X	X	X	-	-	X	-	O	0107-3107	47.50	-8.40
<b>6400045</b>	<b>K5</b>	<b>744</b>	-	<b>X</b>	<b>X</b>	<b>X</b>	<b>X</b>	<b>X</b>	-	-	-	<b>X</b>	-	<b>O</b>	<b>0107-3107</b>	<b>59.10</b>	<b>-11.70</b>
6400046	K7	743	X	-	X	-	-	-	-	-	-	-	-	O	0107-3107	60.70	-5.20

Comments:

- EUMETNET moored buoys are presented in bold characters.

-----  
**Former EGOS moored buoys (Spanish SeaWatch and WaveScan)**

WMO	Name	nobs	Wi	AT	AP	dP	ST	Wa	Ws	Dr	Sb	U	SS	O	Start_end	Lat	Lon
1300130	Gran Canaria	698	X	X	X	-	-	X	X	-	-	-	-	O	0107-3107	28.18	-15.82
1300131	Tenerife Sur	-	-	-	-	-	-	-	-	-	-	-	-	-	-	28.00	-16.58
6100196	C. Begur	-	-	-	-	-	-	-	-	-	-	-	-	-	-	41.92	3.65
6100197	Mahon	720	X	-	X	-	-	X	X	-	-	-	-	O	0107-3107	39.72	4.42
6100198	C. de Gata	718	X	X	X	-	X	X	X	-	-	-	-	O	0107-3107	36.57	-2.33
6100280	Tarragona	685	X	X	X	-	X	X	X	-	-	-	X	O	0107-3107	40.77	1.47
6100281	Valencia	718	X	X	X	-	X	X	X	-	-	-	X	O	0107-3107	39.47	-0.27
6100417	C. de Palos	697	S	-	X	-	X	X	X	-	-	-	X	O	0107-3107	37.65	-0.32
6100430	Dragonera	717	X	X	X	-	S	X	X	-	-	-	-	O	0107-3107	39.56	2.11
6200024	Bilbao-Visc.	701	X	X	X	-	X	X	X	-	-	-	X	O	0107-3107	43.63	-3.03
6200025	C. de Penas	725	X	X	X	-	X	X	X	-	-	-	X	O	0107-3107	43.73	-6.17
6200082	E. de Bares	648	X	X	X	-	X	X	X	-	-	-	X	O	0107-3107	44.13	-7.69
6200083	Villano-Sis.	210	X	X	X	-	X	X	X	-	-	-	X	O	2307-3107	43.48	-9.22
<b>6200084</b>	<b>C. Silleiro</b>	<b>204</b>	<b>X</b>	<b>X</b>	<b>X</b>	-	<b>X</b>	<b>X</b>	<b>X</b>	-	-	-	<b>X</b>	<b>O</b>	<b>2307-3107</b>	<b>42.12</b>	<b>-9.43</b>
6200085	G. de Cadiz	719	X	X	X	-	X	X	X	-	-	-	X	O	0107-3107	36.48	-6.97
6201030	Santander	-	-	-	-	-	-	-	-	-	-	-	-	-	-	43.84	-3.77

Comments:

- The EUMETNET buoy is presented in bold characters.

-----  
**Operating POSEIDON moored buoys (Greece)**

WMO	Name	nobs	Wi	AT	AP	dP	ST	Wa	Ws	Dr	Sb	U	SS	O	Start_end	Lat	Lon
6101000		-	-	-	-	-	-	-	-	-	-	-	-	-	-	39.10	24.50
6101001		-	-	-	-	-	-	-	-	-	-	-	-	-	-	37.60	23.60
6101002		-	-	-	-	-	-	-	-	-	-	-	-	-	-	37.00	22.10
6101003		21	S	-	S	-	-	S	-	-	-	-	-	-	0107-0307	40.00	24.70
6101004		-	-	-	-	-	-	-	-	-	-	-	-	-	-	39.10	25.80
6101005		-	-	-	-	-	-	-	-	-	-	-	-	-	-	37.50	25.50
6101006		-	-	-	-	-	-	-	-	-	-	-	-	-	-	36.30	25.50
6101007		53	S	S	S	-	-	S	-	-	-	-	-	-	0107-0707	35.80	24.90
6101008		118	X	X	X	-	-	X	-	-	-	-	-	O	1507-3107	36.80	21.60
6101009		-	-	-	-	-	-	-	-	-	-	-	-	-	-	38.00	20.60



**E-SURFMAR DB Monthly Report  
July 2015**

-----  
**Other European moored buoys (operated by 3rd parties)**

WMO	Name	nobs	Wi	AT	AP	dP	ST	Wa	Ws	Dr	Sb	U	SS	O	Start_end	Lat	Lon
1200050	Cycofos		-	-	-	-	-	-	-	-	-	-	-			33.60	31.90
6100010	Italia-1		-	-	-	-	-	-	-	-	-	-	-			43.80	9.10
6200027	Jersey	249	X	-	X	X	-	X	-	-	-	-	-	O	0107-3107	49.08	-22.20
6200030	L4	664	-	X	X	-	-	-	-	-	-	X	-	O	0107-3107	50.25	-4.22
6200050	E1		-	-	-	-	-	-	-	-	-	-	-			50.04	-4.37
6200086	NSB II	706	X	X	X	X	X	-	-	-	-	X	-	O	0107-3107	55.00	6.40
6200087	NSB III	29	-	X	X	X	X	-	-	-	-	X	-	O	2707-3007	54.70	6.80
6200191	Porto	702	X	X	X	-	-	X	-	-	-	-	-	O	0107-3107	41.15	-9.57
6200192	Peniche		-	-	-	-	-	-	-	-	-	-	-			39.50	-9.65
6200303	Turbo Bank	742	X	X	X	X	X	X	-	-	-	X	-	O	0107-3107	51.60	-5.10
6200442	PAP	745	X	-	-	-	-	-	-	-	-	-	-	O	0107-3107	49.00	-16.40
6600021	Arkona Becken	726	X	X	-	-	X	X	-	-	-	-	-	O	0107-3107	54.90	13.90
6600022	Oder Bank	707	X	X	-	-	X	-	-	-	-	-	-	O	0107-3107	54.10	14.20
6600024	Darsser Schwelle	741	X	X	-	-	X	X	-	-	-	-	-	O	0107-3107	54.70	12.70

-----  
**Other offshore moored buoys inside the EUMETNET area**

WMO	Name	nobs	Wi	AT	AP	dP	ST	Wa	Ws	Dr	Sb	U	SS	O	Start_end	Lat	Lon
1300001		404	X	X	X	-	X	-	-	-	-	X	S	L	0107-3107	11.47	-23.00
1300008		350	X	X	X	-	X	-	-	-	-	X	X	L	0107-3107	14.98	-38.02
1300308	East Atlantic		-	-	-	-	-	-	-	-	-	-	-			15.00	-38.00
4100026		318	X	X	-	-	-	-	-	-	-	X	-	L	0107-3107	11.49	-38.40
4100040	West Atlantic	767	X	X	X	X	X	X	-	-	-	X	-	O	0107-3107	14.50	-53.00
4100041	Mid. Atlantic	772	X	X	X	X	X	X	-	-	-	X	-	O	0107-3107	14.50	-46.00
4100043	Porto Rico	774	X	X	X	X	X	X	-	-	-	X	-	O	0107-3107	21.00	-65.00
4100044		768	X	X	X	X	X	X	-	-	-	X	-	O	0107-3107	21.70	-58.70
4100046		773	X	X	X	X	X	X	-	-	-	X	-	O	0107-3107	23.90	-70.90
4100047			-	-	-	-	-	-	-	-	-	-	-			27.50	-71.50
4100048		773	X	X	X	X	X	X	-	-	-	X	-	O	0107-3107	32.00	-69.60
4100049		772	X	X	X	X	X	X	-	-	-	X	-	O	0107-3107	27.50	-53.00
4100139		392	X	X	X	-	S	-	-	-	-	X	-	L	0107-3107	20.02	-37.86
4100300	Antilles	705	X	X	X	X	X	-	-	-	-	X	-	T	0107-3107	15.85	-57.47
4200059	Caraibes	774	X	X	X	X	X	X	-	-	-	X	-	O	0107-3107	15.00	-67.50
4400008	A Nantucket	775	X	X	X	X	X	X	-	-	-	X	-	O	0107-3107	40.50	-69.40
4400011	D Georges Bk	775	X	X	X	X	X	X	-	-	-	X	-	O	0107-3107	41.10	-66.60
4400018	SE Cape Cod	775	X	X	X	X	X	X	-	-	-	X	-	O	0107-3107	41.30	-69.30
4400024	NNE Channel	734	X	X	X	-	X	X	-	-	-	-	-	O	0107-3107	42.30	-65.90
4400137	E Scotia Sl.	731	X	X	X	X	X	X	-	-	-	-	-	O	0107-3107	42.30	-62.00
4400138	SW Gd Banks		-	-	-	-	-	-	-	-	-	-	-			44.30	-53.60
4400139	Beanquereau	731	X	X	X	X	X	X	-	-	-	-	-	O	0107-3107	44.30	-57.10
4400140	Tail of Bk		-	-	-	-	-	-	-	-	-	-	-			43.80	-51.70
4400141	Larentian F	704	X	X	X	X	X	X	-	-	-	-	-	O	0107-3107	43.00	-58.00
4400150	La Have Bk	713	X	X	X	X	X	X	-	-	-	-	-	O	0107-3107	42.50	-64.00

# E-SURFMAR DB Monthly Report July 2015

## Buoy-QC statistics from Meteo-France model outputs

*Datend* : Date of the last value received on GTS  
*Recvd* : Total number of values received on GTS  
*GE* : Number of Gross Errors (excluded from bias and sd computations)  
*bias* : Mean differences between observation values and co-located model output values  
*Std* : Standard deviation of differences

### Air Pressure (hPa), drifting buoys, July 2015

Datend	WMO	Telcom	Recvd	GE	Bias	Std
20150731	1300868	11686410	397	0	0.4	0.2
20150731	1300869	11688410	744	0	0.1	0.3
20150731	1300870	61512860	744	0	0.7	0.4
20150731	1300871	61516870	718	0	0.7	0.3
20150731	1300872	61611050	741	0	0.8	0.4
20150731	1500681	61661310	744	0	1.0	0.7
20150731	1500682	61663300	744	0	0.5	0.8
20150731	1500683	61663370	744	0	0.7	0.5
20150731	1500684	62328350	744	0	-0.2	0.6
20150731	2500617	61767070	744	0	-0.3	0.2
20150731	2500618	11020180	744	0	0.3	0.3
20150731	2500620	61760090	744	0	-0.0	0.3
20150731	2500652	60176700	395	0	0.0	0.3
20150731	4100635	61475300	370	0	0.5	0.4
20150731	4100637	62859910	343	0	0.4	0.6
20150731	4100638	62955440	362	0	0.1	0.5
20150731	4100707	62957110	342	0	-0.0	0.6
20150731	4100708	62958100	332	0	0.1	0.6
20150731	4100729	62321360	744	0	0.0	0.5
20150731	4100730	62326350	744	0	0.1	0.6
20150731	4100731	62329360	744	0	0.3	0.5
20150731	4100969	60213780	744	0	-0.3	0.5
20150731	4100970	60213790	744	0	0.3	0.5
20150731	4100971	60215900	744	0	0.2	0.3
20150731	4100972	60217780	732	0	0.1	0.4
20150731	4400513	61475450	744	0	0.3	0.3
20150731	4400515	61476450	743	0	0.1	0.6
20150731	4400517	61477390	744	0	0.2	0.4
20150731	4400546	11160640	744	0	-0.0	0.4
20150731	4400547	60173710	744	0	0.1	0.4
20150731	4400548	11799230	744	0	0.1	0.3
20150731	4400549	60896130	744	1	0.0	0.4
20150731	4400550	60894140	744	0	-0.1	0.5
20150731	4400551	60892140	744	0	0.1	0.3
20150731	4400557	61568540	274	0	0.4	0.5
20150731	4400601	60890150	744	0	-0.7	0.4
20150731	4400606	11162640	744	0	-0.1	0.4
20150731	4400608	11093800	742	0	0.2	0.4
20150731	4400609	61613050	744	0	0.2	0.4
20150731	4400613	11475040	744	0	-0.1	0.3
20150731	4400614	61661340	725	0	-0.3	0.4
20150731	4400620	61667370	744	0	0.3	0.3
20150731	4400621	61519840	743	0	0.5	0.5
20150708	4400622	61668320	185	0	-0.4	0.5
20150731	4400623	61669330	744	0	-0.2	0.3
20150731	4400624	11341110	734	0	-0.1	0.3
20150731	4400625	61668340	730	0	0.3	0.3
20150731	4400725	11027170	744	0	0.2	0.8
20150731	4400739	61516840	744	0	0.8	0.5
20150731	4400740	11883820	744	0	-0.0	0.4
20150731	4400744	62953450	59	0	-0.1	0.4
20150722	4400760	61662360	525	0	-0.1	0.3
20150731	4400761	61669320	744	0	-0.3	0.3
20150731	4400762	61664310	744	0	0.3	0.6
20150731	4400763	61667330	621	0	0.2	0.3
20150731	4400764	61662330	744	0	-0.3	0.3
20150731	4400768	62322360	744	0	0.1	0.4
20150731	4400769	62328360	744	0	0.1	0.5
20150731	4400770	11846540	683	0	-0.2	0.3
20150731	4400771	60554620	683	0	-0.2	0.3
20150731	4400773	60211790	659	0	0.1	0.6

## E-SURFMAR DB Monthly Report July 2015

20150731	4400774	61477400	742	0	0.2	0.4
20150731	4400775	61476400	744	0	0.3	0.5
20150731	4400776	61474410	744	0	0.4	0.5
20150731	4400778	61475430	743	0	0.4	0.4
20150731	4400835	60218770	744	0	-0.2	0.3
20150731	4400836	60218680	744	0	-0.1	0.3
20150731	4400837	60209590	744	0	-0.0	0.3
20150731	4400839	60205090	744	0	-0.0	0.3
20150731	4400846	60441290	742	0	0.6	0.2
20150731	4400847	60442280	743	0	0.5	0.4
20150731	4400848	60448280	744	0	0.2	0.3
20150731	4400863	60211690	744	0	-0.3	0.3
20150731	4400866	11793240	744	0	-0.3	0.4
20150731	4400867	11593590	744	0	-0.3	0.3
20150731	4400868	11794230	744	0	0.2	0.6
20150731	4400871	11790240	744	0	0.1	0.4
20150731	4400872	60202920	744	0	-0.5	0.3
20150731	4400877	60526170	744	0	-0.0	0.3
20150731	4400878	60528170	744	0	0.2	0.4
20150731	4400880	60556880	726	1	-0.2	0.4
20150731	4400885	60218780	744	0	-0.1	0.3
20150731	4400887	60251440	744	0	0.2	0.3
20150731	4400888	60359010	744	0	-0.1	0.4
20150731	4400889	60202320	744	0	0.1	0.3
20150731	4400890	12000230	744	0	0.2	0.5
20150731	4400891	12007220	744	0	0.0	0.3
20150731	4400892	60018400	744	0	-0.0	0.4
20150731	6200513	61665360	744	0	0.1	0.3
20150731	6200514	60203700	744	0	-0.0	0.3
20150731	6200516	11475100	744	0	0.4	0.3
20150731	6200536	11599570	514	0	-0.3	0.4
<b>20150718</b>	<b>6200538</b>	<b>11460700</b>	<b>430</b>	<b>1</b>	<b>0.0</b>	<b>1.2</b>
20150731	6200539	60891140	744	0	-0.1	0.4
20150731	6200552	11797240	744	0	0.2	0.4
20150731	6200553	11165650	744	0	0.3	0.3
20150731	6200681	11168640	744	0	-0.1	0.3
20150731	6200695	60408990	744	0	0.3	0.3
20150731	6200713	11246980	737	0	-0.1	0.4
20150731	6200714	11240980	740	0	-0.1	0.4
20150731	6200940	60203850	744	0	0.1	0.3
20150731	6200941	60207590	744	0	-0.0	0.3
20150731	6300640	60172710	744	0	0.2	0.3
<b>20150707</b>	<b>6300644</b>	<b>61766070</b>	<b>157</b>	<b>43</b>	<b>-0.4</b>	<b>1.8</b>
20150731	6400517	61619060	725	0	0.5	0.5
20150731	6400518	60892150	744	0	0.1	0.4
20150731	6400519	61518850	744	0	0.2	0.4
<b>20150727</b>	<b>6400520</b>	<b>11479040</b>	<b>637</b>	<b>63</b>	<b>-0.8</b>	<b>1.6</b>
20150731	6400521	11470030	745	0	-0.1	0.3
20150731	6400522	61511870	624	0	0.1	0.3
20150731	6400523	61510870	744	0	0.2	0.3
20150731	6400524	61619040	740	0	-0.2	0.3
20150731	6400525	60175710	744	0	0.1	0.3
20150731	6400526	61611070	722	0	0.2	0.4
20150731	6400527	61514840	743	0	0.7	0.3
20150731	6400528	61471310	744	0	0.3	0.3
20150731	6400529	11027150	744	0	-0.1	0.8
20150731	6400530	61470290	744	0	0.2	0.3
20150731	6400547	61473300	742	0	0.2	0.3
20150717	6400548	61472290	408	0	0.4	0.3
20150731	6400549	60898120	744	0	-0.0	0.3
20150731	6400550	11463700	744	0	-0.0	0.3
20150731	6400551	11795230	744	0	-0.0	0.4
20150731	6400552	10822640	731	0	-0.0	0.3
20150731	6400606	61515870	744	0	0.8	0.4
20150731	6400613	60174710	744	0	0.2	0.3
20150731	6400614	60178700	744	0	0.1	0.3
20150731	6400615	60173700	744	0	0.6	0.3
20150731	6400620	60899130	739	0	0.1	0.3
20150731	6400621	61614070	711	0	0.1	0.3
20150731	6400622	60172810	744	0	0.1	0.3
20150731	6400623	11470040	744	0	-0.3	0.2
20150728	6400665	60171710	666	0	0.5	0.3
20150731	6400666	60179710	744	0	0.5	0.3
20150731	6400667	61615060	734	0	-0.2	0.5
20150731	6400668	60177860	744	0	0.3	0.2
20150731	6400692	60172720	744	0	0.3	0.3

## E-SURFMAR DB Monthly Report July 2015

20150731	6500514	62954450	107	0	0.1	0.2
20150731	6500596	61511850	734	0	0.7	0.3
20150731	6500599	62326370	744	0	0.4	0.3
20150731	6500600	62326360	744	0	0.1	0.3
20150731	6500601	62320360	744	0	0.2	0.3
20150731	6500602	62323360	744	0	-0.0	0.3

### Air Pressure (hPa), moored buoys, July 2015

Datend	WMO	Telcom	Recvd	GE	Bias	Std
20150731	1300130		698	11	0.7	0.6
20150731	6100001		737	0	0.6	0.5
20150731	6100002		717	1	0.4	0.4
20150731	6100197		720	0	0.0	0.6
20150731	6100198		718	0	0.4	0.6
20150731	6100280		685	0	0.7	0.6
20150731	6100281		718	0	0.5	0.7
20150731	6100417		697	0	1.3	0.6
20150731	6100430		717	0	0.7	0.6
20150703	6101003		21	0	1.4	0.6
20150707	6101007		53	0	0.2	0.5
20150731	6101008		118	0	0.7	0.6
20150731	6200001		744	0	0.3	0.5
20150731	6200024		701	0	0.6	0.6
20150731	6200025		725	0	0.5	0.6
20150731	6200027		245	0	0.1	0.5
20150731	6200029		735	0	0.2	0.4
20150731	6200030		664	0	0.0	0.4
20150731	6200081		742	0	0.0	0.5
20150731	6200082		644	0	0.5	0.6
20150731	6200083		210	0	0.4	0.6
20150731	6200084		204	0	0.6	0.5
20150731	6200085		719	0	0.4	0.5
20150731	6200086		696	0	-0.2	0.5
20150730	6200087		29	0	-0.7	0.5
20150731	6200091		740	1	-0.2	0.5
20150731	6200092		740	0	0.1	0.5
20150731	6200093		740	3	0.2	0.5
20150731	6200094		740	0	-0.1	0.5
20150731	6200095		742	0	-0.2	0.5
20150731	6200163		743	0	0.1	0.4
20150731	6200191		702	0	0.1	0.4
20150731	6200303		742	0	0.2	0.4
20150731	6400045		744	0	0.1	0.4
20150731	6400046		741	0	0.4	0.5

### Air Temperature (C), moored buoys, July 2015

Datend	WMO	Telcom	Recvd	GE	Bias	Std
20150731	1300130		698	0	0.1	0.4
20150731	6100001		739	0	0.1	1.0
20150731	6100002		733	0	-0.1	0.8
20150731	6100198		519	21	0.4	1.6
20150731	6100280		685	0	0.5	0.6
20150731	6100281		718	0	0.2	0.9
20150731	6100430		717	0	1.1	0.6
20150707	6101007		53	0	-1.8	0.7
20150731	6101008		118	0	0.5	0.9
20150731	6200001		744	0	-0.0	0.5
20150731	6200024		701	0	0.5	0.7
20150731	6200025		725	0	-0.1	0.8
20150731	6200029		735	0	0.1	0.4
20150731	6200030		664	0	-0.7	0.6
20150731	6200081		742	0	-0.1	0.4
20150731	6200082		642	0	0.0	0.5
20150731	6200083		210	0	-0.1	0.4
20150731	6200084		204	0	0.0	0.7
20150731	6200085		719	0	-0.2	0.8
20150731	6200086		700	0	-0.0	0.7

## E-SURFMAR DB Monthly Report July 2015

20150730	6200087	29	0	-0.6	0.7
20150731	6200091	740	0	-0.2	0.4
20150731	6200092	740	0	-0.2	0.4
20150731	6200093	740	0	0.0	0.3
20150731	6200094	740	0	0.1	0.5
20150731	6200095	739	2	-0.3	0.7
20150731	6200163	743	0	0.1	0.4
20150731	6200191	702	0	0.1	0.7
20150731	6200303	742	0	-0.2	0.4
20150731	6400045	744	0	-0.2	0.5
20150731	6600021	721	1	0.1	0.8
20150731	6600022	700	0	0.6	1.0
20150731	6600024	741	0	0.2	0.9

### Wind direction (deg.), moored buoys, July 2015

Datend	WMO	Telcom	Recvd	GE	Bias	Std
20150731	1300130		698	0	16	10
20150731	6100001		736	75	-1	34
20150731	6100002		713	19	-3	23
20150731	6100197		696	28	-12	22
20150731	6100280		657	23	-3	31
20150731	6100281		713	64	9	35
20150731	6100430		710	60	-7	32
20150703	6101003		21	0	-19	32
<b>20150707</b>	<b>6101007</b>		<b>52</b>	<b>0</b>	<b>-23</b>	<b>12</b>
20150731	6101008		117	12	6	28
20150731	6200001		743	9	-3	21
20150731	6200024		243	8	3	26
20150731	6200025		719	64	2	29
20150731	6200027		212	7	-4	36
20150731	6200029		733	3	2	14
20150731	6200081		742	1	-1	13
20150731	6200082		643	14	-2	20
20150731	6200083		209	0	-8	16
20150731	6200084		202	6	-4	20
20150731	6200085		710	24	-6	23
20150731	6200086		693	15	5	19
20150731	6200091		740	9	-1	18
20150731	6200092		739	5	5	16
20150731	6200093		740	8	6	15
20150731	6200094		740	0	0	15
20150731	6200095		719	0	-5	15
20150731	6200163		743	3	-1	14
20150731	6200191		700	30	-5	23
20150731	6200303		742	3	-3	20
20150731	6200442		742	2	6	14
20150731	6400046		742	8	2	18
20150731	6600021		715	5	-3	16
20150731	6600022		698	13	0	24
20150731	6600024		741	11	3	19

### Wind speed rate, moored buoys, July 2015

Datend	WMO	Telcom	Recvd	GE	Rate	Err
20150731	1300130		698	0	0.8	1.8
20150731	6100001		736	3	1.7	2.2
20150731	6100002		713	1	1.1	1.5
20150731	6100197		696	0	1.2	1.2
20150731	6100280		657	0	1.2	1.3
20150731	6100281		713	0	1.5	1.9
20150731	6100430		710	0	1.3	1.4
20150703	6101003		21	0	0.8	1.8
20150707	6101007		52	0	1.0	1.0
20150731	6101008		117	0	1.0	1.9
20150731	6200001		743	0	1.1	1.1
20150731	6200024		243	0	1.6	1.9
20150731	6200025		719	0	1.0	2.2
20150731	6200027		212	1	1.1	1.6
20150731	6200029		733	0	1.0	1.1
20150731	6200081		742	0	1.0	1.3
20150731	6200082		643	0	0.9	1.4
20150731	6200083		209	0	0.9	1.2



## E-SURFMAR DB Monthly Report July 2015

20150731	6200084	202	0	1.0	1.5
20150731	6200085	710	0	1.0	1.6
20150731	6200086	693	0	1.2	1.4
20150731	6200091	740	0	1.0	1.8
20150731	6200092	739	0	1.0	1.3
20150731	6200093	740	0	1.0	1.3
20150731	6200094	740	0	1.0	1.3
20150731	6200095	719	0	0.9	1.2
20150731	6200163	743	0	1.0	1.1
20150731	6200191	700	0	1.1	1.5
20150731	6200303	742	1	0.9	1.5
20150731	6200442	742	0	1.0	1.1
20150731	6400046	742	0	1.1	1.3
20150731	6600021	715	1	1.1	1.3
20150731	6600022	698	0	1.3	1.4
20150731	6600024	741	0	1.2	1.4

### Comments on QC statistics :

#### Air pressure

1. Metocean buoys WMO **6300644** and **6400520** reported wrong pressure data before the transmission was stopped.
2. Metocean buoy WMO **6200538** reported wrong pressure data at the beginning of July for unknown reasons before it ceased to emit in middle of the month.
3. Spanish moored buoy WMO **6100417** (Cabo de Palos) and Greek Poseidon buoy WMO **6101003** presented a systematic bias for about 1.3 hPa during the month.

#### Air temperature

4. Spanish moored buoy **6100198** (Cabo de Gata) reported wrong temperature data but the GTS data transmission was not stopped for this parameter.
5. Greek moored buoy WMO **6101007** reported wrong temperature data before it stopped on the 7<sup>th</sup> of July.

Monthly QC statistics and other data quality control tools are available on line at :

<http://www.meteo.shom.fr/qctools/>

The working area of the E-SURFMAR website is open at <http://esurfmar.meteo.fr/wikisurf-wa/> . Ask the E-SURFMAR Programme Manager [Pierre.Blouch@meteo.fr](mailto:Pierre.Blouch@meteo.fr) for the password in case you forgot it. Graphs of system performances June be displayed/downloaded at [http://esurfmar.meteo.fr/doc/r/surfmar/others/e-surfmar\\_monitoring.pdf](http://esurfmar.meteo.fr/doc/r/surfmar/others/e-surfmar_monitoring.pdf).