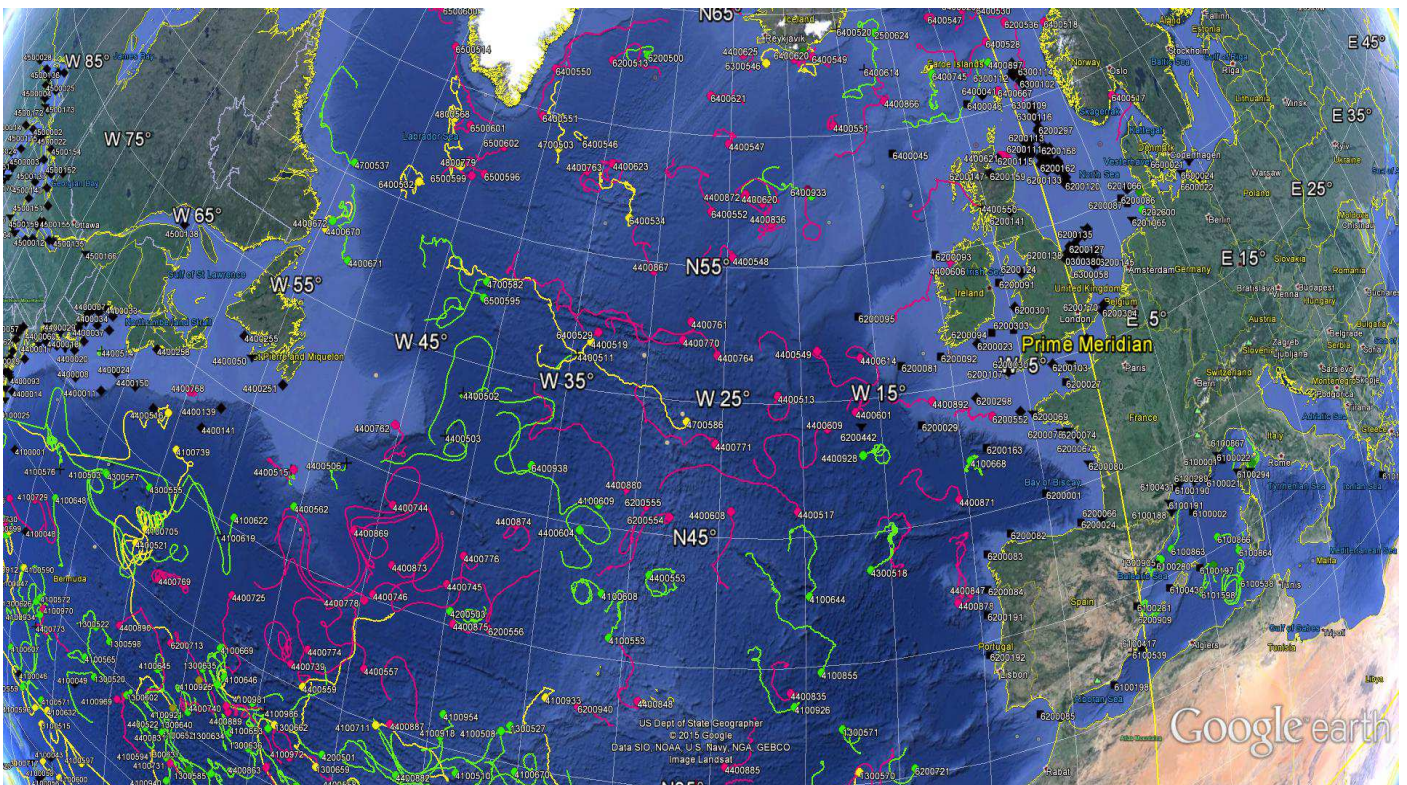


## **DATA BUOY MONTHLY REPORT**

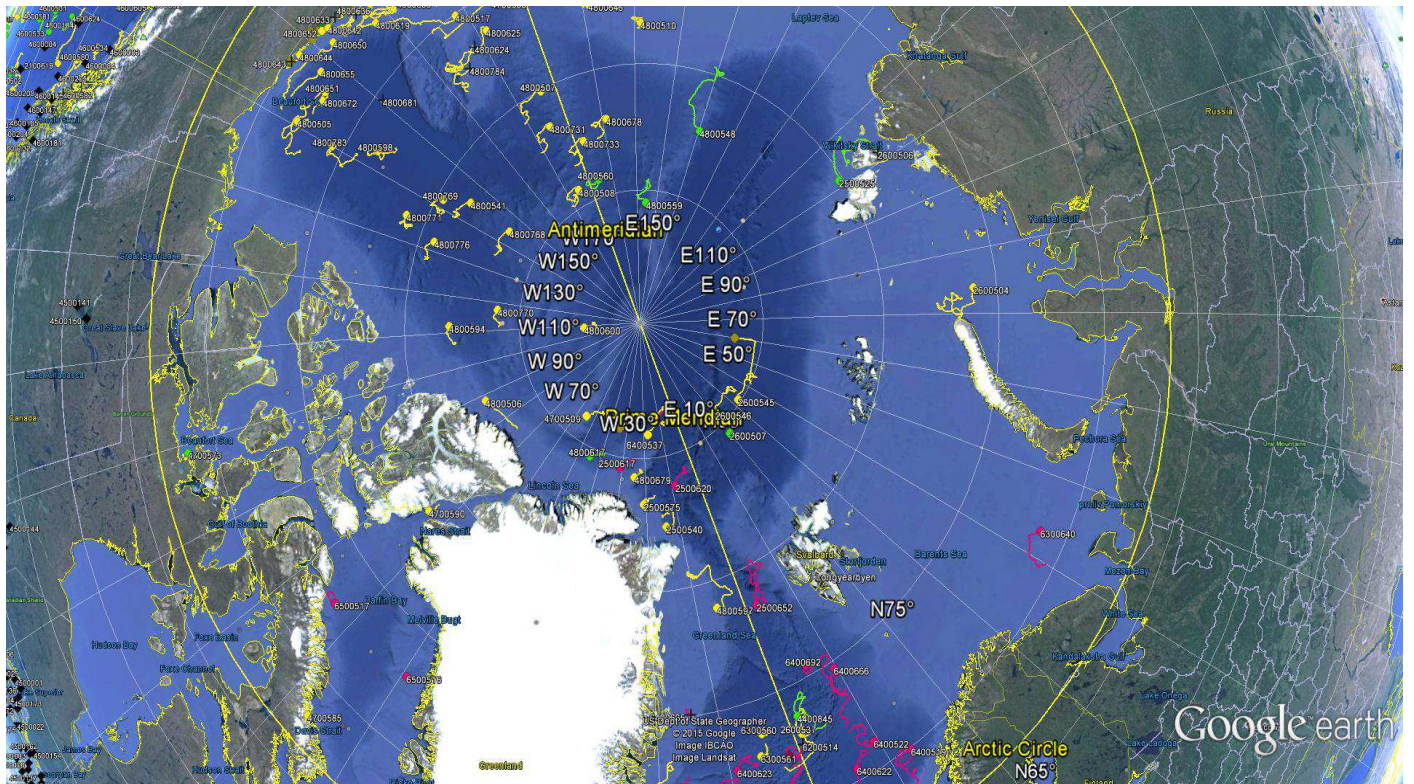
**August 2015**



*August 2015 : Operating data buoys in the North Atlantic  
Drifting buoy trajectories : E-SURFMAR (red), others (yellow)  
Moored buoy positions (black)*

*Most recent trajectories may be seen at:  
[http://www.meteo.shom.fr/cartographie/data/kml/MeteoFrance\\_buoys\\_map\\_15.kmz](http://www.meteo.shom.fr/cartographie/data/kml/MeteoFrance_buoys_map_15.kmz)*

# E-SURFMAR DB Monthly Report August 2015



August 2015  
Drifting buoy trajectories in Arctic Ocean and adjacent seas : E-SURFMAR (red), others (yellow)

-----  
**DRIFTING BUOYS**  
-----

**Network status**

By the end of August, **142 Drifting buoys**, reporting air pressure onto the GTS, were in operation in the frame of E-SURFMAR. Out of these, 104 were E-SURFMAR funded Iridium SVP-Bs, including 4 in the Arctic, 7 in AtlantOS activities and 9 HRSST-2 buoys. The remaining buoys were: 38 drifters owned by NOAA and upgraded with barometers by E-SURFMAR.

Information about the availability of buoys for future deployments may be get from the E-SURFMAR wikisite (working area) at: [http://esurfmar.meteo.fr/wikisurf-wa/index.php/Availability\\_of\\_drifting\\_buoys](http://esurfmar.meteo.fr/wikisurf-wa/index.php/Availability_of_drifting_buoys)

Besides E-SURFMAR buoys, 72 drifting buoys were reporting at least air pressure observations from the EUMETNET area of interest. Out of these, only one was reporting Sea Surface Salinity.

**Drifting buoys - New deployments**

WMO	Telcom	Typ	Ow	Dep_Date	DepLat	DepLon	From	Comment
	62958440	MSB	EU	20150827	72.9	-65.8	Reykjavik	Boréal (Failed at deployment)
1500685	62854900	MSB	EU	20150826	-5.9	-4.4	Brest	MSC Abidjan
1500686	62959110	MSB	EU	20150827	-3.0	-6.6	Brest	MSC Abidjan
1500687	62851680	MSB	EU	20150829	-12.0	0.3	Brest	MSC Abidjan (Failed at deployment)
1500688	62958430	MSB	EU	20150828	-9.0	-2.0	Brest	MSC Abidjan
4400869	61615050	MSB	EU	20150805	38.9	-49.9	Southampton	Hurst Point
4400873	61612060	MSB	EU	20150804	40.4	-44.8	Southampton	Hurst Point
4400874	62858910	MSB	EU	20150801	43.7	-37.2	Lunenburg	Hermione
4400875	61616040	MSB	EU	20150804	41.8	-39.9	Southampton	Hurst Point
6200554	62952460	MSB	EU	20150803	43.3	-32.0	Lunenburg	Hermione
6200555	61515850	MSB	EU	20150802	44.4	-30.1	Southampton	Hurst Point
6200556	61510860	MSB	EU	20150803	43.2	-35.0	Southampton	Hurst Point
6500515	62858710	MSB	EU	20150817	67.5	-54.8	Reykjavik	Nanuq
6500516	62954440	MSB	EU	20150826	72.9	-59.5	Reykjavik	Boréal
6500517	62957440	MSB	EU	20150827	72.6	-73.1	Reykjavik	Boréal

-----  
**Operating drifting buoys in North Atlantic by the end of the month**

WMO	Telcom	Typ	Ow	nobs	Wi	AT	AP	dP	ST	Wa	Ws	Dr	Sb	U	SS	O	Start_end	Lat	Lon	Age
1300868	11686410	MSB	EU	406	-	-	X	S	X	-	-	X	-	-	-	T	0108-3108	32.87	-15.63	284
1300869	11688410	MSB	EU	744	-	-	X	S	X	-	-	X	-	-	-	T	0108-3108	23.00	-38.74	282
1300870	61512860	MSB	EU	744	-	-	X	S	X	-	-	X	-	-	-	T	0108-3108	31.77	-17.08	172
1300871	61516870	MSB	EU	626	-	-	X	S	X	-	-	X	-	-	-	T	0108-3108	25.16	-32.68	170
1300872	61611050	MSB	EU	730	-	-	X	S	X	-	-	X	-	-	-	T	0108-3108	25.50	-27.19	171
2500617	61767070	MSB	EU	744	-	-	X	S	X	-	-	S	-	-	-	T	0108-3108	84.62	-30.87	345
2500618	11020180	MSB	EU	744	-	-	X	S	X	-	-	X	-	-	-	T	0108-3108	86.32	-11.85	133
2500620	61760090	MSB	EU	744	-	-	X	S	X	-	-	S	-	-	-	T	0108-3108	83.85	-8.62	339
2500652	60176700	MSB	EU	748	-	-	X	S	X	-	-	S	-	-	-	T	0108-3108	78.50	2.36	719
4100729	62321360	MSB	EU	744	-	-	X	S	X	-	-	X	-	-	-	T	0108-3108	33.82	-69.41	97
4100730	62326350	MSB	EU	744	-	-	X	S	X	-	-	X	-	-	-	T	0108-3108	30.85	-71.94	96
4100731	62329360	MSB	EU	744	-	-	X	S	X	-	-	X	-	-	-	T	0108-3108	27.90	-55.01	102
4100969	60213780	PSB	UP	744	-	-	X	S	X	-	-	X	-	-	-	T	0108-3108	28.91	-59.37	754
4100970	60213790	PSB	UP	744	-	-	X	S	X	-	-	X	-	-	-	T	0108-3108	29.42	-66.59	753
4100971	60215900	PSB	UP	744	-	-	X	S	X	-	-	X	-	-	-	T	0108-3108	32.42	-17.14	753
4100972	60217780	PSB	UP	731	-	-	X	S	X	-	-	X	-	-	-	T	0108-3108	31.83	-47.55	753
4400513	61475450	DSB	UP	744	-	-	X	S	X	-	-	X	-	-	-	T	0108-3108	50.29	-21.52	176
4400515	61476450	DSB	UP	741	-	-	X	S	X	-	-	X	-	-	-	T	0108-3108	43.56	-50.96	178
4400517	61477390	DSB	UP	744	-	-	X	S	X	-	-	X	-	-	-	T	0108-3108	46.01	-20.39	175
4400546	11160640	MSB	EU	744	-	-	X	S	X	-	-	X	-	-	-	T	0108-3108	26.43	-45.35	895
4400547	60173710	MSB	EU	744	-	-	X	S	X	-	-	X	-	-	-	T	0108-3108	59.71	-25.14	386
4400548	11799230	MSB	E2	744	-	-	X	S	X	-	-	X	-	-	-	T	0108-3108	55.39	-24.62	386
4400549	60896130	MSB	EU	744	-	-	X	S	X	-	-	X	-	-	-	T	0108-3108	51.91	-18.89	359
4400551	60892140	MSB	EU	744	-	-	X	S	X	-	-	X	-	-	-	T	0108-3108	60.40	-16.38	359

## E-SURFMAR DB Monthly Report August 2015

4400557	61568540	DSB	UP	743	-	-	X	S	X	-	-	X	-	-	-	T	0108-3108	37.13	-44.06	48
4400601	60890150	MSB	EU	744	-	-	X	S	X	-	-	X	-	-	-	T	0108-3108	49.56	-16.60	358
4400606	11162640	MSB	EU	744	-	-	X	S	X	-	-	X	-	-	-	T	0108-3108	54.65	-8.75	327
4400608	11093800	MSB	E2	744	-	-	X	S	X	-	-	X	-	-	-	T	0108-3108	46.03	-24.33	326
4400609	61613050	MSB	EU	744	-	-	X	S	X	-	-	X	-	-	-	T	0108-3108	49.03	-18.45	208
4400613	11475040	MSB	EU	744	-	-	X	S	X	-	-	X	-	-	-	T	0108-3108	28.04	-29.20	909
4400614	61661340	MSB	EU	694	-	-	X	S	X	-	-	X	-	-	-	T	0108-3108	51.54	-16.03	489
4400620	61667370	MSB	EU	744	-	-	X	S	X	-	-	X	-	-	-	T	0108-3108	57.47	-22.47	488
4400621	61519840	MSB	EU	742	-	-	X	S	X	-	-	X	-	-	-	T	0108-3108	58.14	-2.38	569
4400623	61669330	MSB	EU	744	-	-	X	S	X	-	-	X	-	-	-	T	0108-3108	58.50	-34.25	207
4400624	11341110	YSB	EU	735	-	-	X	S	X	-	-	X	-	-	-	T	0108-3108	25.64	-27.25	994
4400625	61668340	MSB	EU	744	-	-	X	S	X	-	-	X	-	-	-	T	0108-3108	63.29	-24.04	487
4400725	11027170	MSB	EU	744	-	-	X	S	X	-	-	X	-	-	-	T	0108-3108	37.41	-52.85	1165
4400739	61516840	MSB	EU	744	-	-	X	S	X	-	-	X	-	-	-	T	0108-3108	35.96	-48.35	455
4400740	11883820	PSB	UP	744	-	-	X	S	X	-	-	X	-	-	-	T	0108-3108	32.55	-51.85	1150
4400744	62953450	MSB	EU	744	-	-	X	S	X	-	-	X	-	-	-	T	0108-3108	43.89	-44.24	36
4400745	62956440	MSB	EU	664	-	-	X	-	X	-	-	X	-	-	-	T	0408-3108	41.60	-40.17	33
4400746	62850730	MSB	EU	664	-	-	X	-	X	-	-	X	-	-	-	T	0408-3108	40.23	-44.33	32
4400761	61669320	MSB	EU	744	-	-	X	S	X	-	-	X	-	-	-	T	0108-3108	52.94	-27.30	207
4400762	61664310	MSB	EU	744	-	-	X	S	X	-	-	X	-	-	-	T	0108-3108	46.85	-45.28	206
4400763	61667330	MSB	EU	648	-	-	X	S	X	-	-	X	-	-	-	T	0108-3108	58.05	-36.17	170
4400764	61662330	MSB	EU	744	-	-	X	S	X	-	-	X	-	-	-	T	0108-3108	51.76	-25.47	169
4400768	62322360	MSB	EU	744	-	-	X	S	X	-	-	X	-	-	-	T	0108-3108	43.99	-59.70	101
4400769	62328360	MSB	EU	744	-	-	X	S	X	-	-	X	-	-	-	T	0108-3108	35.95	-57.99	102
4400770	11846540	MSB	E2	744	-	-	X	S	X	-	-	X	-	-	-	T	0108-3108	52.24	-27.78	61
4400771	60554620	PSG	UP	738	-	-	X	S	X	-	-	X	-	-	-	T	0108-3108	48.50	-25.39	61
4400774	61477400	DSB	UP	743	-	-	X	S	X	-	-	X	-	-	-	T	0108-3108	36.89	-47.53	289
4400775	61476400	DSB	UP	744	-	-	X	S	X	-	-	X	-	-	-	T	0108-3108	32.24	-71.99	289
4400776	61474410	DSB	UP	743	-	-	X	S	X	-	-	X	-	-	-	T	0108-3108	42.86	-39.48	288
4400778	61475430	DSB	UP	743	-	-	X	S	X	-	-	X	-	-	-	T	0108-3108	39.86	-44.76	287
4400835	60218770	PSB	UP	740	-	-	X	S	X	-	-	X	-	-	-	T	0108-3108	39.05	-20.84	546
4400836	60218680	PSB	UP	739	-	-	X	S	X	-	-	X	-	-	-	T	0108-3108	56.71	-21.85	546
4400837	60209490	PSB	UP	740	-	-	X	S	X	-	-	X	-	-	-	T	0108-3108	29.80	-23.41	546
4400839	60205090	PSB	UP	740	-	-	X	S	X	-	-	X	-	-	-	T	0108-3108	34.31	-22.89	546
4400846	60441290	DSB	UP	740	-	-	X	S	X	-	-	X	-	-	-	T	0108-3108	35.26	-25.68	583
4400847	60442280	DSB	UP	737	-	-	X	S	X	-	-	X	-	-	-	T	0108-3108	42.08	-10.50	583
4400848	60448280	DSB	UP	737	-	-	X	S	X	-	-	X	-	-	-	T	0108-3108	38.53	-28.98	582
4400863	60211690	PSB	UP	744	-	-	X	S	X	-	-	X	-	-	-	T	0108-3108	30.78	-48.86	777
4400866	11793240	MSB	E2	744	-	-	X	S	X	-	-	X	-	-	-	T	0108-3108	61.18	-11.63	437
4400867	11593590	MSB	EU	744	-	-	X	S	X	-	-	X	-	-	-	T	0108-3108	54.68	-30.17	435
4400868	11794230	MSB	E2	744	-	-	X	S	X	-	-	X	-	-	-	T	0108-3108	27.99	-40.86	846
4400869	61615050	MSB	EU	612	-	-	X	-	X	-	-	X	-	-	-	T	0608-3108	42.35	-46.26	27
4400871	11790240	MSB	E2	744	-	-	X	S	X	-	-	X	-	-	-	T	0108-3108	45.77	-10.58	431
4400872	60202920	MSB	EU	744	-	-	X	S	X	-	-	X	-	-	-	T	0108-3108	57.79	-23.75	431
4400873	61612060	MSB	EU	638	-	-	X	-	X	-	-	X	-	-	-	T	0508-3108	41.62	-43.55	28
4400874	62858910	MSB	EU	664	-	-	X	-	X	-	-	X	-	-	-	T	0408-3108	44.51	-36.73	31
4400875	61616040	MSB	EU	663	-	-	X	-	X	-	-	X	-	-	-	T	0408-3108	40.14	-39.46	28
4400877	60526170	PSB	UP	740	-	-	X	S	X	-	-	X	-	-	-	T	0108-3108	33.93	-16.03	574
4400878	60528170	PSB	UP	739	-	-	X	S	X	-	-	X	-	-	-	T	0108-3108	41.82	-11.25	574
4400880	60656880	PSB	UP	735	-	-	X	S	X	-	-	X	-	-	-	T	0108-3108	46.59	-30.55	575
4400885	60218780	PSB	UP	739	-	-	X	S	X	-	-	X	-	-	-	T	0108-3108	36.05	-24.23	459
4400887	60251440	PSB	UP	738	-	-	X	S	X	-	-	X	-	-	-	T	0108-3108	35.26	-42.13	461
4400888	60359010	PSB	UP	739	-	-	X	S	X	-	-	X	-	-	-	T	0108-3108	43.38	-14.59	459
4400889	60202320	PSB	UP	738	-	-	X	S	X	-	-	X	-	-	-	T	0108-3108	32.33	-51.67	460
4400890	12000230	PSB	UP	738	-	-	X	S	X	-	-	X	-	-	-	T	0108-3108	32.53	-60.07	459
4400891	12007220	PSB	UP	739	-	-	X	S	X	-	-	X	-	-	-	T	0108-3108	25.41	-44.74	457
4400892	60018400	PSB	UP	740	-	-	X	S	X	-	-	X	-	-	-	T	0108-3108	49.60	-11.56	458
6200513	61665360	MSB	EU	744	-	-	X	S	X	-	-	X	-	-	-	T	0108-3108	62.54	-35.94	208
6200516	11475100	MSB	EU	744	-	-	X	S	X	-	-	X	-	-	-	T	0108-3108	21.43	-40.90	847
6200536	11599570	MSB	EU	744	-	-	X	S	X	-	-	X	-	-	-	T	0108-3108	63.33	2.34	449
6200539	60891140	MSB	EU	744	-	-	X	S	X	-	-	X	-	-	-	T	0108-3108	57.95	-18.93	361
6200552	11797240	MSB	E2	744	-	-	X	S	X	-	-	X	-	-	-	T	0108-3108	48.59	-7.72	326
6200553	11165650	MSB	EU	744	-	-	X	S	X	-	-	X	-	-	-	T	0108-3108	65.87	-29.46	891
6200554	62952460	MSB	EU	664	-	-	X	-	X	-	-	X	-	-	-	T	0408-3108	45.70	-27.91	29
6200555	61515850	MSB	EU	660	-	-	X	-	X	-	-	X	-	-	-	T	0408-3108	46.03	-29.31	30
6200556	61510860	MSB	EU	664	-	-	X	-	X	-	-	X	-	-	-	T	0408-3108	40.33	-37.45	29
6200681	11168640	MSB	EU	745	-	-	X	S	X	-	-	X	-	-	-	T	0108-3108	25.69	-27.79	1019
6200695	60408990	MSB	E2	744	-	-	X	S	X	-	-	X	-	-	-	T	0108-3108	26.66	-44.35	847
6200713	11246980	YSB	EU	742	-	-	X	S	X	-	-	X	-	-	-	T	0108-3108	33.66	-56.19	993
6200714	11240980	YSB	EU	740	-	-	X	S	X	-	-	X	-	-	-	T	0108-3108	31.55	-53.55	990
6200940	60203850	PSB	UP	738	-	-	X	S	X	-	-	X	-	-	-	T	0108-3108	38.01	-32.13	456
6200941	61516840	PSB	UP	740	-	-	X	S	X	-	-	X	-	-	-	T	0108-3108	33.67	-21.51	456
6300640	60172710	MSB	EU	744	-	-	X	S	X	-	-	X	-	-	-	T	0108-3108	71.28	43.09	748
6400517	61619060	MSB	EU	731	-	-	X	S	X	-	-	X	-	-	-	T	0108-3108	58.88	9.62	293
6400518	60892150	MSB	EU	739	-	-	X	S	S	-	-	X	-	-	-	T	0108-3108	62.78	6.44	292
6400519	61518850	MSB	EU	744	-	-	X	S	X	-	-	X	-	-	-	T	0108-3108	69.92	12.88	226

## E-SURFMAR DB Monthly Report August 2015

6400521	11470030	MSB	EU	744	-	-	X	S	X	-	-	X	-	-	-	T	0108-3108	72.39	-1.56	841
6400522	61511870	MSB	EU	616	-	-	X	S	X	-	-	X	-	-	-	T	0108-3108	71.18	9.42	374
6400523	61510870	MSB	EU	730	-	-	X	S	X	-	-	X	-	-	-	T	0108-3108	64.28	-1.65	296
6400524	61619040	MSB	EU	743	-	-	X	S	X	-	-	X	-	-	-	T	0108-3108	66.74	12.72	296
6400525	60175710	MSB	EU	744	-	-	X	S	X	-	-	X	-	-	-	T	0108-3108	70.43	-11.88	745
6400526	61611070	MSB	EU	744	-	-	X	S	X	-	-	X	-	-	-	T	0108-3108	65.42	-30.64	294
6400527	61514840	MSB	EU	714	-	-	X	S	X	-	-	X	-	-	-	T	0108-3108	65.21	-37.43	293
6400528	61471310	DSB	UP	737	-	-	X	S	X	-	-	X	-	-	-	T	0108-3108	62.76	-0.41	76
6400529	11027150	MSB	EU	744	-	-	X	S	X	-	-	X	-	-	-	T	0108-3108	52.16	-33.42	77
6400530	61470290	DSB	UP	738	-	-	X	S	X	-	-	X	-	-	-	T	0108-3108	64.25	0.02	76
6400547	61473300	DSB	UP	739	-	-	X	S	X	-	-	X	-	-	-	T	0108-3108	64.29	-5.45	75
6400549	60898120	MSB	EU	744	-	-	X	S	X	-	-	X	-	-	-	T	0108-3108	63.21	-17.61	73
6400550	11463700	MSB	UP	744	-	-	X	S	X	-	-	X	-	-	-	T	0108-3108	61.73	-40.80	70
6400551	11795230	MSB	E2	744	-	-	X	S	X	-	-	X	-	-	-	T	0108-3108	59.79	-40.77	70
6400552	10822640	MSB	EU	744	-	-	X	S	X	-	-	X	-	-	-	T	0108-3108	57.09	-26.31	67
6400606	61515870	MSB	EU	744	-	-	X	S	X	-	-	X	-	-	-	T	0108-3108	65.53	5.48	222
6400613	60174710	MSB	EU	744	-	-	X	S	X	-	-	X	-	-	-	T	0108-3108	69.30	-20.26	730
6400615	60173700	MSB	EU	744	-	-	X	S	X	-	-	X	-	-	-	T	0108-3108	71.51	-15.70	661
6400620	60899130	MSB	EU	742	-	-	X	S	X	-	-	X	-	-	-	T	0108-3108	63.13	-19.30	157
6400621	61614070	MSB	EU	706	-	-	X	S	X	-	-	X	-	-	-	T	0108-3108	61.59	-26.83	156
6400622	60172810	MSB	EU	744	-	-	X	S	X	-	-	X	-	-	-	T	0108-3108	70.55	5.96	746
6400623	11470040	MSB	EU	744	-	-	X	S	X	-	-	X	-	-	-	T	0108-3108	72.43	-9.00	842
6400666	60179710	MSB	EU	744	-	-	X	S	X	-	-	X	-	-	-	T	0108-3108	74.73	9.61	642
6400667	61615060	MSB	EU	727	-	-	X	S	X	-	-	X	-	-	-	T	0108-3108	60.70	-1.00	614
6400668	60177860	MSB	EU	744	-	-	X	S	X	-	-	X	-	-	-	T	0108-3108	71.89	-11.45	618
6400692	60172720	MSB	EU	744	-	-	X	S	X	-	-	X	-	-	-	T	0108-3108	75.43	5.89	557
6500514	62954450	MSB	EU	744	-	-	X	S	X	-	-	X	-	-	-	T	0108-3108	61.39	-50.44	39
6500515	62858710	MSB	EU	300	-	-	X	-	X	-	-	X	-	-	-	T	1908-3108	67.96	-53.85	15
6500516	62954440	MSB	EU	88	-	-	X	-	X	-	-	X	-	-	-	T	2808-3108	72.92	-59.27	6
6500517	62957440	MSB	EU	88	-	-	X	-	X	-	-	X	-	-	-	T	2808-3108	72.69	-73.59	4
6500596	61511850	MSB	EU	744	-	-	X	S	X	-	-	X	-	-	-	T	0108-3108	56.99	-44.04	439
6500599	62326370	MSB	EU	744	-	-	X	S	X	-	-	X	-	-	-	T	0108-3108	56.79	-44.96	114
6500600	62326360	MSB	EU	744	-	-	X	S	X	-	-	X	-	-	-	T	0108-3108	62.66	-53.34	113
6500601	62320360	MSB	EU	713	-	-	X	S	X	-	-	X	-	-	-	T	0108-3108	58.63	-46.44	111
6500602	62323360	MSB	EU	744	-	-	X	S	X	-	-	X	-	-	-	T	0108-3108	58.22	-43.17	111

### ----- Operating AtlantOS drifting buoys by the end of the month

WMO	Telcom	Typ	Ow	nobs	Wi	AT	AP	dP	ST	Wa	Ws	Dr	Sb	U	SS	O	Start_end	Lat	Lon	Age
1500681	61661310	MSB	EU	744	-	-	X	S	X	-	-	X	-	-	-	T	0108-3108	-12.61	-7.55	136
1500682	61663300	MSB	EU	744	-	-	X	S	X	-	-	X	-	-	-	T	0108-3108	-10.41	-4.00	137
1500683	61663370	MSB	EU	744	-	-	X	S	X	-	-	X	-	-	-	T	0108-3108	-8.04	-24.07	138
1500684	62328350	MSB	EU	744	-	-	X	S	X	-	-	X	-	-	-	T	0108-3108	-6.09	-18.17	137
1500685	62854900	MSB	EU	88	-	-	X	-	X	-	-	X	-	-	-	T	2808-3108	-6.10	-5.12	4
1500686	62959110	MSB	EU	88	-	-	X	-	X	-	-	X	-	-	-	T	2808-3108	-3.42	-7.33	4
1500688	62958430	MSB	EU	80	-	-	X	-	X	-	-	X	-	-	-	T	2808-3108	-8.97	-2.06	4

### ----- Drifting buoys which ceased to be operational

WMO	Telcom	Typ	Ow	End_Date	Lat	Lon	Age	Cause
1500687	62851680	MSB	EU	20150829	-12.0	0.3	1	Failed at deployment
4400550	60894140	MSB	EU	20150824	56.5	-5.4	352	Ashore in Scotland
4400773	60211790	PSB	UP	20150808	28.0	-67.1	756	Faded (Battery empty)
6200514	60203700	MSB	E2	20150820	72.6	0.7	910	Faded (Battery empty)
6400614	60178700	MSB	EU	20150827	62.5	-12.9	722	Faded (Battery empty)
6400665	60171710	MSB	EU	20150827	75.1	-14.3	638	Faded (Battery empty)

## E-SURFMAR DB Monthly Report August 2015

-----  
Non-operating drifting buoys reporting GTS data

WMO	Telcom	Typ	Ow	nobs	Wi	AT	AP	dP	ST	Wa	Ws	Dr	Sb	U	SS	O	Start_end	Lat	Lon	Age
2500624	60247420	MSB	EU	744	-	-	-	-	X	-	-	S	-	-	-	T	0108-3108	64.00	-11.23	731
4400604	11794240	MSB	E2	744	-	-	-	-	X	-	-	X	-	-	-	T	0108-3108	44.81	-33.02	328
6500595	11595570	MSB	EU	744	-	-	-	-	X	-	-	X	-	-	-	T	0108-3108	52.48	-41.55	441

-----  
Other operating drifting buoys inside the EUMETNET area by the end of the month

WMO	Telcom	Typ	Ow	nobs	Wi	AT	AP	dP	ST	Wa	Ws	Dr	Sb	U	SS	O	Start_end	Lat	Lon
1300515	114951	AOML		728	-	-	X	-	X	-	-	X	-	-	-	L	0108-3108	25.05	-48.92
1300517	114943	AOML		704	-	-	X	-	X	-	-	X	-	-	-	L	0108-3108	13.18	-39.59
1300519	127004	AOML		736	-	-	X	X	X	-	-	X	-	-	-	L	0108-3108	22.76	-39.91
1300523	114877	AOML		710	-	-	X	-	X	-	-	X	-	-	-	L	0108-3108	15.57	-69.88
1300525	127003	AOML		738	-	-	X	X	X	-	-	X	-	-	-	L	0108-3108	7.55	-21.71
1300530	114916	AOML		719	-	-	X	-	X	-	-	X	-	-	-	L	0108-3108	8.44	-21.94
1300531	114921	AOML		718	-	-	X	-	X	-	-	X	-	-	-	L	0108-3108	13.96	-56.84
1300569	114880	AOML		703	-	-	X	-	X	-	-	X	-	-	-	L	0108-3108	27.64	-32.83
1300570	116474	AOML		736	-	-	X	-	X	-	-	X	-	-	-	L	0108-3108	35.59	-17.17
1300572	127002	AOML		740	-	-	X	X	X	-	-	X	-	-	-	L	0108-3108	30.70	-33.71
1300633	109491	AOML		742	-	-	X	X	X	-	-	X	-	-	-	L	0108-3108	34.26	-29.53
1300659	11910180	UKMO		744	-	-	X	S	X	-	-	X	-	-	-	T	0108-3108	32.01	-45.95
1300660	11022040	UKMO		744	-	-	X	S	X	-	-	X	-	-	-	T	0108-3108	27.93	-44.05
1300661	62325770	UKMO		744	-	-	X	S	S	-	-	X	-	-	-	T	0108-3108	12.22	-28.30
1300662	11098800	UKMO		744	-	-	X	S	X	-	-	X	-	-	-	T	0108-3108	32.97	-48.72
1500951	10450430	CMM		678	-	-	X	S	X	-	-	X	-	-	-	T	0108-3108	1.31	-0.97
2100942	119223	UKMO		739	-	-	X	X	X	-	-	X	-	-	-	L	0108-3108	27.03	-39.39
2500540		APL		744	-	-	X	X	X	-	-	-	-	-	-	L	0108-3108	82.41	-14.03
2500575				744	-	-	X	X	X	-	-	-	-	-	-	L	0108-3108	83.31	-20.84
2600537	61369210	PSC		739	-	-	X	X	X	-	-	X	-	-	-	O	0108-3108	73.03	1.13
2600545				157	-	-	X	X	X	-	-	X	-	-	-	O	2508-3108	85.12	32.70
2600546				744	-	-	X	X	X	-	-	X	-	-	-	O	0108-3108	85.52	21.02
3100515	114946	AOML		710	-	-	X	-	X	-	-	X	-	-	-	L	0108-3108	22.67	-65.81
3100717	61614160	CMM		744	-	-	X	S	X	-	-	X	-	-	-	T	0108-3108	19.88	-65.85
3100720	62652340	CMM		1480	-	-	X	S	X	-	-	X	-	-	X	T	0108-3108	2.22	5.93
3100863	61611040	CMM		744	-	-	X	S	X	-	-	X	-	-	-	T	0108-3108	18.17	-58.16
4100564	109221	AOML		718	-	-	X	-	X	-	-	X	-	-	-	L	0108-3108	29.26	-32.58
4100580	132677	AOML		731	-	-	X	X	X	-	-	X	-	-	-	L	0108-3108	23.23	-49.70
4100590	132676	AOML		610	-	-	X	X	X	-	-	X	-	-	-	L	0108-3108	30.14	-69.06
4100591	132678	AOML		722	-	-	X	X	X	-	-	X	-	-	-	L	0108-3108	19.89	-53.84
4100594	127029	AOML		743	-	-	X	X	X	-	-	X	-	-	-	L	0108-3108	27.72	-56.25
4100596	11473050	CMM		740	-	-	X	S	X	-	-	X	-	-	-	T	0108-3108	23.19	-66.52
4100597	61512840	AOML		744	-	-	X	S	X	-	-	X	-	-	-	T	0108-3108	23.22	-61.83
4100600	61618040	AOML		744	-	-	X	S	X	-	-	X	-	-	-	T	0108-3108	20.30	-64.09
4100632	11474050	CMM		744	-	-	X	S	X	-	-	X	-	-	-	T	0108-3108	24.06	-65.24
4100635	61475300	CMM		737	-	-	X	S	X	-	-	X	-	-	-	T	0108-3108	22.42	-41.59
4100637	62859910	CMM		578	-	-	X	S	X	-	-	X	-	-	-	T	0108-3108	16.77	-48.35
4100705	11596570	AOML		744	-	-	X	S	X	-	-	X	-	-	-	T	0108-3108	37.54	-59.80
4100706	11595580	AOML		744	-	-	X	S	X	-	-	X	-	-	-	T	0108-3108	30.75	-55.30
4100707	62957110	CMM		744	-	-	X	S	X	-	-	X	-	-	-	T	0108-3108	12.02	-52.34
4100708	62958100	CMM		744	-	-	X	S	X	-	-	X	-	-	-	T	0108-3108	8.92	-45.06
4100711	11477030	CMM		744	-	-	X	S	X	-	-	X	-	-	-	T	0108-3108	34.98	-42.91
4100739	11912120	UKMO		744	-	-	X	S	X	-	-	X	-	-	-	T	0108-3108	41.50	-59.28
4100904				752	X	-	X	-	X	-	-	X	-	-	-	L	2208-3108	15.09	-58.19
4100933	101721	AOML		573	-	-	X	X	X	-	-	X	-	-	-	L	0108-3108	38.12	-33.89
4100936	109488	AOML		741	-	-	X	X	-	-	-	X	-	-	-	L	0108-3108	32.90	-53.87
4100975	109439	AOML		740	-	-	X	X	X	-	-	X	-	-	-	L	0108-3108	32.21	-31.02
4400505	98087	ICEP		343	-	-	X	X	X	-	-	-	-	-	-	L	0108-3108	33.09	-16.34
4400516	114599	AOML		656	-	-	X	X	X	-	-	X	-	-	-	L	0408-3108	42.61	-60.76
4400519	70840			745	-	-	X	X	X	-	-	X	-	-	-	L	0108-3108	51.77	-33.81
4400521	133133			743	-	-	X	X	X	-	-	X	-	-	-	L	0108-3108	36.65	-60.26
4400558	123286	AOML		744	-	-	X	X	X	-	-	X	-	-	-	L	0108-3108	31.58	-44.30
4400559	133131			740	-	-	X	X	X	-	-	X	-	-	-	L	0108-3108	35.26	-47.42
4400670				744	-	-	X	X	X	-	-	X	-	-	-	O	0108-3108	52.69	-54.49
4400896	109438	AOML		743	-	-	X	X	X	-	-	X	-	-	-	L	0108-3108	29.47	-45.46
4700503		APL		744	-	-	X	X	X	-	-	-	-	-	-	L	0108-3108	58.69	-38.79
4700509				744	-	X	X	X	-	-	-	X	-	-	-	O	0108-3108	85.94	-54.66
4700585	11541430	EC		744	-	-	X	X	X	-	-	X	-	-	-	O	0108-3108	68.08	-66.68
4700586	11541440	EC		744	-	-	X	X	X	-	-	X	-	-	-	O	0108-3108	49.26	-27.21
4800568	61363210	PSC		739	-	-	X	X	X	-	-	X	-	-	-	O	0108-3108	58.72	-47.94

## E-SURFMAR DB Monthly Report August 2015

4800597	100009	PSC	1327	X	X	X	-	-	-	-	X	-	-	-	O	0108-3108	78.97	-5.59
4800679	63233150	APL	695	-	-	X	S	X	-	-	X	-	-	-	T	0108-3108	84.31	-24.41
4800778	60894080	EC	741	-	-	X	X	X	-	-	X	-	-	-	O	0108-3108	70.30	-23.75
4800779	60890090	EC	744	-	X	X	X	-	-	-	X	-	-	-	O	0108-3108	57.01	-46.06
6300546	61361200	PSC	739	-	-	X	X	X	-	-	X	-	-	-	O	0108-3108	62.98	-21.93
6300560	60654120		744	-	-	X	-	X	-	-	X	-	-	-	L	0108-3108	73.64	-4.29
6300561	60654200		744	-	-	X	-	X	-	-	X	-	-	-	L	0108-3108	72.75	-5.29
6300923		EC	736	-	X	X	X	-	-	-	X	-	-	-	O	0108-3108	86.37	-13.41
6400532			744	-	-	X	X	X	-	-	-	-	-	-	L	0108-3108	55.89	-48.85
6400534			830	-	-	X	X	X	-	-	-	-	-	-	L	0108-3108	56.54	-32.37
6400537		EC	248	X	X	X	X	X	-	-	X	-	X	-	O	0108-3108	85.88	-17.64
6400538		EC	741	-	X	X	X	-	-	-	X	-	-	-	O	0108-3108	86.04	-34.06

### ----- Abbreviations -----

WMO : WMO id.  
 Argos : Argos id.  
 Typ : Buoy type  
   - first character : Manufacturer (C = ConMar , M = Metocean, P = Pacific Gyre  
   T = Technocean, Y = Marlin-Yug...)  
   - second character : Main type (F = FGGE, I = ICEB, S = SVP)  
   - third character : Sub type (B = barometer buoy, W = Wind buoy,  
   S = Salinity buoy)

Ow : Buoy owner (country code or EU for EUCOS, E2 for HRSST-2 buoys, UP for upgraded buoys)  
 Owner : Buoy owner for non EUCOS buoys  
 Nobs : number of GTS reports received at Meteo-France  
 Parameters (X = OK, S = stopped, - = not measured) :  
   Wi : Wind  
   AT : Air Temperature  
   AP : Air Pressure  
   dP : Air pressure tendency  
   ST : Sea surface Temperature  
   Wa : Wave period and height  
   Ws : Wave spectra  
   Dr : Drogue presence  
   Sb : Subsurface temperature  
   U : Relative humidity  
   SS : Sea surface Salinity

O : Origin of the reports (T = Argos Toulouse, L = Argos Largo, O = Other)  
 Start\_end : first and last dates of the month for which GTS data were received at Meteo-France  
 Lat : Latitude of the latest position  
 Lon : Longitude of the latest position  
 Age : Age of the buoy (days)

DepDate : Date of deployment  
 DepLat : Latitude of deployment  
 Dep Lon : Longitude of Deployment  
 From : Harbour of departure

Definition : An operating drifting buoy is a buoy providing at least air pressure or wind (direction and velocity) data.

**E-SURFMAR DB Monthly Report  
August 2015**

-----  
**MOORED BUOYS**  
-----

**Former EGOS stations (K-pattern and Hydrosphere)**

WMO	Name	nobs	Wi	AT	AP	dP	ST	Wa	Ws	Dr	Sb	U	SS	O	Start_end	Lat	Lon
6100001	Cote d'Azur	741	X	X	X	X	X	-	X	-	-	X	-	T	0108-3108	43.40	7.80
<b>6100002</b>	<b>Lion</b>	<b>737</b>	<b>X</b>	<b>X</b>	<b>X</b>	<b>X</b>	<b>X</b>	-	<b>X</b>	-	-	<b>X</b>	-	<b>T</b>	<b>0108-3108</b>	<b>42.10</b>	<b>4.70</b>
6200001	Gascogne	744	X	X	X	X	X	X	-	-	-	X	-	O	0108-3108	45.30	-5.00
6200029	K1	716	X	X	X	-	X	X	-	-	-	X	-	O	0108-3108	48.70	-12.50
6200081	K2	744	X	X	X	X	X	X	-	-	-	-	-	O	0108-3108	51.00	-13.20
6200090	M1	-	-	-	-	-	-	-	-	-	-	-	-	-	-	53.10	-11.20
6200091	M2	743	X	X	X	-	X	X	-	-	-	X	-	O	0108-3108	53.50	-5.40
6200092	M3	744	X	X	X	-	X	X	-	-	-	X	-	O	0108-3108	51.20	-10.50
6200093	M4	744	X	X	X	-	X	X	-	-	-	-	-	O	0108-3108	54.70	-9.10
6200094	M5	743	X	X	X	-	S	X	-	-	-	S	-	O	0108-3108	51.70	-6.70
<b>6200095</b>	<b>M6</b>	<b>828</b>	<b>X</b>	<b>X</b>	<b>X</b>	<b>X</b>	<b>X</b>	<b>X</b>	-	-	-	<b>X</b>	-	<b>O</b>	<b>0108-3108</b>	<b>53.10</b>	<b>-15.90</b>
6200105	K4	-	-	-	-	-	-	-	-	-	-	-	-	-	-	55.80	-11.40
6200108	K3	-	-	-	-	-	-	-	-	-	-	-	-	-	-	53.50	-19.50
6200163	Brittany	742	X	X	X	X	X	X	X	-	-	X	-	O	0108-3108	47.50	-8.40
<b>6400045</b>	<b>K5</b>	<b>744</b>	-	<b>X</b>	<b>X</b>	<b>X</b>	<b>X</b>	<b>X</b>	-	-	-	<b>X</b>	-	<b>O</b>	<b>0108-3108</b>	<b>59.10</b>	<b>-11.70</b>
6400046	K7	743	X	-	X	-	-	-	-	-	-	-	-	O	0108-3108	60.70	-5.20

Comments:

- EUMETNET moored buoys are presented in bold characters.

-----  
**Former EGOS moored buoys (Spanish SeaWatch and WaveScan)**

WMO	Name	nobs	Wi	AT	AP	dP	ST	Wa	Ws	Dr	Sb	U	SS	O	Start_end	Lat	Lon
1300130	Gran Canaria	299	X	X	X	-	X	X	X	-	-	-	X	O	1908-3108	28.18	-15.82
1300131	Tenerife Sur	350	X	X	X	-	X	X	X	-	-	-	X	O	1708-3108	28.00	-16.58
6100196	C. Begur	-	-	-	-	-	-	-	-	-	-	-	-	-	-	41.92	3.65
6100197	Mahon	731	X	-	X	-	X	X	X	-	-	-	-	O	0108-3108	39.72	4.42
6100198	C. de Gata	724	X	X	X	-	X	X	X	-	-	-	X	O	0108-3108	36.57	-2.33
6100280	Tarragona	692	X	X	X	-	X	X	X	-	-	-	X	O	0108-3108	40.77	1.47
6100281	Valencia	732	X	X	X	-	X	X	X	-	-	-	X	O	0108-3108	39.47	-0.27
6100417	C. de Palos	554	X	X	X	-	X	X	X	-	-	-	X	O	0108-3108	37.65	-0.32
6100430	Dragonera	732	X	X	X	-	X	X	X	-	-	-	-	O	0108-3108	39.56	2.11
6200024	Bilbao-Visc.	734	X	X	X	-	X	X	X	-	-	-	X	O	0108-3108	43.63	-3.03
6200025	C. de Penas	721	X	X	X	-	X	X	X	-	-	-	X	O	0108-3108	43.73	-6.17
6200082	E. de Bares	733	X	X	X	-	X	X	X	-	-	-	X	O	0108-3108	44.13	-7.69
6200083	Villano-Sis.	733	X	X	X	-	X	X	X	-	-	-	X	O	0108-3108	43.48	-9.22
<b>6200084</b>	<b>C. Silleiro</b>	<b>537</b>	<b>S</b>	<b>S</b>	<b>S</b>	-	<b>S</b>	<b>S</b>	<b>S</b>	-	-	-	<b>S</b>	<b>O</b>	<b>0108-2308</b>	<b>42.12</b>	<b>-9.43</b>
6200085	G. de Cadiz	693	X	X	X	-	X	X	X	-	-	-	X	O	0108-3108	36.48	-6.97
6201030	Santander	-	-	-	-	-	-	-	-	-	-	-	-	-	-	43.84	-3.77

Comments:

- The EUMETNET buoy is presented in bold characters.

-----  
**Operating POSEIDON moored buoys (Greece)**

WMO	Name	nobs	Wi	AT	AP	dP	ST	Wa	Ws	Dr	Sb	U	SS	O	Start_end	Lat	Lon
6101000		-	-	-	-	-	-	-	-	-	-	-	-	-	-	39.10	24.50
6101001		-	-	-	-	-	-	-	-	-	-	-	-	-	-	37.60	23.60
6101002		-	-	-	-	-	-	-	-	-	-	-	-	-	-	37.00	22.10
6101003		-	-	-	-	-	-	-	-	-	-	-	-	-	-	40.00	24.70
6101004		-	-	-	-	-	-	-	-	-	-	-	-	-	-	39.10	25.80
6101005		-	-	-	-	-	-	-	-	-	-	-	-	-	-	37.50	25.50
6101006		-	-	-	-	-	-	-	-	-	-	-	-	-	-	36.30	25.50
6101007		-	-	-	-	-	-	-	-	-	-	-	-	-	-	35.80	24.90
6101008		223	X	X	X	-	-	X	-	-	-	-	-	O	0108-3108	36.80	21.60
6101009		-	-	-	-	-	-	-	-	-	-	-	-	-	-	38.00	20.60



**E-SURFMAR DB Monthly Report  
August 2015**

-----  
**Other European moored buoys (operated by 3rd parties)**

WMO	Name	nobs	Wi	AT	AP	dP	ST	Wa	Ws	Dr	Sb	U	SS	O	Start_end	Lat	Lon
1200050	Cycofos		-	-	-	-	-	-	-	-	-	-	-			33.60	31.90
6100010	Italia-1		-	-	-	-	-	-	-	-	-	-	-			43.80	9.10
6200027	Jersey	248	X	-	X	X	-	X	-	-	-	-	-	O	0108-3108	49.08	-22.20
6200030	L4	742	-	X	X	-	-	-	-	-	-	X	-	O	0108-3108	50.25	-4.22
6200050	E1		-	-	-	-	-	-	-	-	-	-	-			50.04	-4.37
6200086	NSB II	684	X	X	X	X	X	-	-	-	-	X	-	O	0108-3108	55.00	6.40
6200087	NSB III	703	X	X	X	X	X	-	-	-	-	X	-	O	0208-3108	54.70	6.80
6200191	Porto	665	X	X	X	-	-	X	-	-	-	-	-	O	0108-3108	41.15	-9.57
6200192	Peniche	420	X	X	X	-	-	X	-	-	-	-	-	O	1208-3108	39.50	-9.65
6200303	Turbo Bank	639	X	X	X	X	X	X	-	-	-	X	-	O	0108-3108	51.60	-5.10
6200442	PAP	746	X	-	-	-	-	-	-	-	-	-	-	O	0108-3108	49.00	-16.40
6600021	Arkona Becken	743	X	X	-	-	X	X	-	-	-	-	-	O	0108-3108	54.90	13.90
6600022	Oder Bank	713	X	X	-	-	X	-	-	-	-	-	-	O	0108-3108	54.10	14.20
6600024	Darsser Schwelle	744	X	X	-	-	X	X	-	-	-	-	-	O	0108-3108	54.70	12.70

-----  
**Other offshore moored buoys inside the EUMETNET area**

WMO	Name	nobs	Wi	AT	AP	dP	ST	Wa	Ws	Dr	Sb	U	SS	O	Start_end	Lat	Lon
1300001		400	X	X	X	-	X	-	-	-	-	X	-	L	0108-3108	11.47	-23.00
1300008		344	X	X	X	-	X	-	-	-	-	X	S	L	0108-3108	14.98	-38.02
1300308	East Atlantic		-	-	-	-	-	-	-	-	-	-	-			15.00	-38.00
4100026		309	X	X	-	-	-	-	-	-	-	X	-	L	0108-3108	11.49	-38.40
4100040	West Atlantic	770	X	X	X	X	X	X	-	-	-	X	-	O	0108-3108	14.50	-53.00
4100041	Mid. Atlantic	770	X	X	X	X	X	X	-	-	-	X	-	O	0108-3108	14.50	-46.00
4100043	Porto Rico	771	X	X	X	X	X	X	-	-	-	X	-	O	0108-3108	21.00	-65.00
4100044		775	X	X	X	X	X	X	-	-	-	X	-	O	0108-3108	21.70	-58.70
4100046		771	X	X	X	X	X	X	-	-	-	X	-	O	0108-3108	23.90	-70.90
4100047			-	-	-	-	-	-	-	-	-	-	-			27.50	-71.50
4100048		771	X	X	X	X	X	X	-	-	-	X	-	O	0108-3108	32.00	-69.60
4100049		774	X	X	X	X	X	X	-	-	-	X	-	O	0108-3108	27.50	-53.00
4100139		398	X	X	X	-	X	-	-	-	-	X	-	L	0108-3108	20.02	-37.86
4100300	Antilles	715	X	X	X	X	X	-	-	-	-	X	-	T	0108-3108	15.85	-57.47
4200059	Caraibes	771	X	X	X	X	X	X	-	-	-	X	-	O	0108-3108	15.00	-67.50
4400008	A Nantucket	771	X	X	X	X	X	X	-	-	-	X	-	O	0108-3108	40.50	-69.40
4400011	D Georges Bk	772	X	X	X	X	X	X	-	-	-	X	-	O	0108-3108	41.10	-66.60
4400018	SE Cape Cod	774	X	X	X	X	X	X	-	-	-	X	-	O	0108-3108	41.30	-69.30
4400024	NNE Channel	722	X	X	X	-	X	X	-	-	-	-	-	O	0108-3108	42.30	-65.90
4400137	E Scotia Sl.	740	X	X	X	X	X	X	-	-	-	-	-	O	0108-3108	42.30	-62.00
4400138	SW Gd Banks		-	-	-	-	-	-	-	-	-	-	-			44.30	-53.60
4400139	Beanquereau	742	X	X	X	X	X	X	-	-	-	-	-	O	0108-3108	44.30	-57.10
4400140	Tail of Bk		-	-	-	-	-	-	-	-	-	-	-			43.80	-51.70
4400141	Larentian F	731	X	X	X	X	X	X	-	-	-	-	-	O	0108-3108	43.00	-58.00
4400150	La Have Bk	702	X	X	X	X	X	X	-	-	-	-	-	O	0108-3108	42.50	-64.00

## E-SURFMAR DB Monthly Report August 2015

### Buoy-QC statistics from Meteo-France model outputs

*Datend* : Date of the last value received on GTS  
*Recvd* : Total number of values received on GTS  
*GE* : Number of Gross Errors (excluded from bias and sd computations)  
*bias* : Mean differences between observation values and co-located model output values  
*Std* : Standard deviation of differences

#### Air Pressure (hPa), drifting buoys, August 2015

Datend	WMO	Telcom	Recvd	GE	Bias	Std
20150831	1300868	11686410	406	0	0.5	0.3
20150831	1300869	11688410	744	0	0.1	0.3
20150831	1300870	61512860	744	0	0.7	0.4
20150831	1300871	61516870	626	0	0.6	0.3
20150831	1300872	61611050	730	0	0.8	0.4
20150831	1500681	61661310	744	0	0.9	0.7
20150831	1500682	61663300	744	0	0.4	0.8
20150831	1500683	61663370	744	0	0.8	0.4
20150831	1500684	62328350	744	0	-0.2	0.5
20150831	1500685	62854900	88	0	0.1	0.9
20150831	1500686	62959110	88	0	-0.0	0.8
20150831	1500688	62958430	80	0	0.3	0.9
20150831	2500617	61767070	744	0	-0.3	0.3
20150831	2500618	11020180	744	0	0.3	0.4
20150831	2500620	61760090	744	0	0.0	0.3
20150831	2500652	60176700	748	0	-0.1	0.3
20150831	4100635	61475300	736	0	0.4	0.4
20150831	4100637	62859910	578	0	0.3	0.6
20150823	4100638	62955440	548	0	0.0	0.5
20150831	4100707	62957110	744	0	-0.1	0.6
20150831	4100708	62958100	744	0	0.1	0.6
20150831	4100729	62321360	744	0	-0.1	0.5
20150831	4100730	62326350	744	0	0.2	0.5
20150831	4100731	62329360	744	0	0.3	0.5
20150831	4100969	60213780	744	0	-0.3	0.5
20150831	4100970	60213790	744	0	0.3	0.5
20150831	4100971	60215900	744	0	0.2	0.3
20150831	4100972	60217780	731	0	0.1	0.3
20150831	4400513	61475450	744	0	0.4	0.4
20150831	4400515	61476450	741	0	0.2	0.5
20150831	4400517	61477390	744	0	0.3	0.4
20150831	4400546	11160640	744	0	-0.1	0.4
20150831	4400547	60173710	744	0	0.1	0.5
20150831	4400548	11799230	744	0	0.2	0.3
20150831	4400549	60896130	744	0	0.1	0.4
20150824	4400550	60894140	564	0	-0.5	1.0
20150831	4400551	60892140	744	0	-0.1	0.5
20150831	4400557	61568540	743	0	0.4	0.3
20150831	4400601	60890150	744	0	-0.6	0.4
20150831	4400606	11162640	744	0	-0.0	0.4
20150831	4400608	11093800	744	0	0.1	0.4
20150831	4400609	61613050	744	0	0.2	0.5
20150831	4400613	11475040	744	0	-0.1	0.2
20150831	4400614	61661340	694	0	-0.2	0.5
20150831	4400620	61667370	744	0	0.2	0.5
20150831	4400621	61519840	742	0	0.4	0.5
20150831	4400623	61669330	744	0	-0.3	0.4
20150831	4400624	11341110	735	0	-0.1	0.3
20150831	4400625	61668340	744	0	0.3	0.4
20150831	4400725	11027170	744	2	0.2	0.4
20150831	4400739	61516840	744	0	0.8	0.5
20150831	4400740	11883820	744	0	-0.1	0.4
20150831	4400744	62953450	744	0	-0.1	0.4
20150831	4400745	62956440	664	0	-0.0	0.3
20150831	4400746	62850730	664	0	0.0	0.3
20150831	4400761	61669320	744	0	-0.4	0.4
20150831	4400762	61664310	744	0	0.5	0.5
20150831	4400763	61667330	648	0	0.0	0.4
20150831	4400764	61662330	744	0	-0.3	0.4
20150831	4400768	62322360	744	0	0.1	0.5
20150831	4400769	62328360	744	0	0.2	0.4

## E-SURFMAR DB Monthly Report August 2015

20150831	4400770	11846540	744	0	-0.2	0.6
20150831	4400771	60554620	738	0	-0.2	0.4
20150808	4400773	60211790	112	0	-0.3	0.9
20150831	4400774	61477400	743	0	0.1	0.3
20150831	4400775	61476400	744	0	0.3	0.5
20150831	4400776	61474410	743	0	0.4	0.3
20150831	4400778	61475430	743	0	0.2	0.3
20150831	4400835	60218770	740	0	-0.2	0.3
20150831	4400836	60218680	739	0	-0.0	0.4
20150831	4400837	60209590	740	0	-0.0	0.4
20150831	4400839	60205090	740	0	-0.0	0.3
20150831	4400846	60441290	740	0	0.5	0.3
20150831	4400847	60442280	737	0	0.5	0.4
20150831	4400848	60448280	737	0	0.2	0.3
20150831	4400863	60211690	744	0	-0.3	0.4
20150831	4400866	11793240	744	0	-0.3	0.3
20150831	4400867	11593590	744	0	-0.2	0.4
20150831	4400868	11794230	744	0	0.1	0.5
20150831	4400869	61615050	612	0	0.6	0.6
20150831	4400871	11790240	744	0	0.1	0.4
20150831	4400872	60202920	744	0	-0.4	0.3
20150831	4400873	61612060	638	0	0.8	0.4
20150831	4400874	62858910	664	0	0.1	0.4
20150831	4400875	61616040	663	0	0.6	0.3
20150831	4400877	60526170	740	0	0.0	0.3
20150831	4400878	60528170	739	0	0.1	0.4
20150831	4400880	60556880	735	0	-0.2	0.4
20150831	4400885	60218780	739	0	-0.0	0.3
20150831	4400887	60251440	738	0	-0.0	0.3
20150831	4400888	60359010	739	0	-0.1	0.5
20150831	4400889	60202320	738	0	0.1	0.3
20150831	4400890	12000230	738	0	0.2	0.4
20150831	4400891	12007220	739	0	-0.0	0.4
20150831	4400892	60018400	740	0	-0.0	0.4
20150831	6200513	61665360	744	0	0.0	0.4
<b>20150819</b>	<b>6200514</b>	<b>60203700</b>	<b>442</b>	<b>0</b>	<b>-1.6</b>	<b>2.8</b>
20150831	6200516	11475100	744	0	0.4	0.3
20150831	6200536	11599570	744	0	-0.3	0.4
20150831	6200539	60891140	744	0	-0.2	0.4
20150831	6200552	11797240	744	0	0.2	0.4
20150831	6200553	11165650	744	0	0.1	0.4
20150831	6200554	62952460	664	0	0.1	0.4
20150831	6200555	61515850	660	0	0.4	0.4
20150831	6200556	61510860	664	0	0.7	0.4
20150831	6200681	11168640	745	0	0.0	0.4
20150831	6200695	60408990	744	0	0.3	0.4
20150831	6200713	11246980	742	0	-0.1	0.4
20150831	6200714	11240980	740	0	-0.1	0.4
20150831	6200940	60203850	738	0	-0.0	0.3
20150831	6200941	60207590	740	0	-0.0	0.3
20150831	6300640	60172710	744	0	0.3	0.4
20150831	6400517	61619060	731	0	0.7	0.5
20150831	6400518	60892150	737	5	0.1	0.4
20150831	6400519	61518850	744	0	0.4	0.4
20150831	6400521	11470030	744	0	-0.1	0.3
20150831	6400522	61511870	616	0	0.1	0.4
20150831	6400523	61510870	730	0	0.1	0.4
20150831	6400524	61619040	743	0	0.0	0.4
20150831	6400525	60175710	744	0	0.0	0.4
20150831	6400526	61611070	744	0	0.0	0.4
20150831	6400527	61514840	714	0	0.5	0.4
20150831	6400528	61471310	737	0	0.1	0.4
20150831	6400529	11027150	744	0	0.1	0.9
20150831	6400530	61470290	738	0	0.3	0.3
20150831	6400547	61473300	739	0	0.0	0.4
20150831	6400549	60898120	744	0	-0.2	0.4
20150831	6400550	11463700	744	0	-0.2	0.3
20150831	6400551	11795230	744	0	0.0	0.4
20150831	6400552	10822640	744	0	-0.0	0.5
20150831	6400606	61515870	744	0	0.9	0.4
20150831	6400613	60174710	744	0	0.1	0.4
20150827	6400614	60178700	636	0	-0.0	0.4
20150831	6400615	60173700	744	0	0.4	0.4
20150831	6400620	60899130	742	0	-0.1	0.4
20150831	6400621	61614070	706	0	-0.1	0.5
20150831	6400622	60172810	744	0	0.1	0.3

## E-SURFMAR DB Monthly Report August 2015

20150831	6400623	11470040	744	0	-0.3	0.3
20150827	6400665	60171710	69	0	0.4	0.2
20150831	6400666	60179710	744	0	0.4	0.3
20150831	6400667	61615060	727	1	-0.5	0.9
20150831	6400668	60177860	744	0	0.1	0.4
20150831	6400692	60172720	744	0	0.4	0.3
20150831	6500514	62954450	744	0	0.2	0.4
20150831	6500515	62858710	300	0	0.5	0.3
20150831	6500516	62954440	88	0	0.1	0.4
20150831	6500517	62957440	88	0	0.1	0.3
20150831	6500596	61511850	744	0	0.4	0.4
20150831	6500599	62326370	744	0	0.2	0.4
20150831	6500600	62326360	744	0	-0.0	0.4
20150831	6500601	62320360	713	0	0.0	0.4
20150831	6500602	62323360	744	0	-0.2	0.4

### Air Pressure (hPa), moored buoys, August 2015

Datend	WMO	Telcom	Recvd	GE	Bias	Std
20150831	1300130		299	0	0.2	0.6
20150831	1300131		350	0	0.5	0.6
20150831	6100001		741	1	0.6	0.4
20150831	6100002		726	0	0.2	0.5
20150831	6100197		731	0	0.1	0.6
20150831	6100198		724	0	0.4	0.7
20150831	6100280		692	0	0.7	0.6
20150831	6100281		732	0	0.5	0.7
20150831	6100417		554	0	1.3	0.6
20150831	6100430		732	0	0.7	0.7
20150831	6101008		223	5	-0.2	3.1
20150831	6200001		744	0	0.2	0.5
20150831	6200024		734	0	0.5	0.6
20150831	6200025		721	0	0.4	0.6
20150831	6200027		247	0	0.0	0.5
20150831	6200029		716	0	0.2	0.4
20150831	6200030		742	0	-0.0	0.4
20150831	6200081		744	0	0.1	0.4
20150831	6200082		730	0	0.5	0.7
20150831	6200083		733	0	0.3	0.7
20150823	6200084		537	0	0.6	0.5
20150831	6200085		693	0	0.5	0.6
20150831	6200086		678	3	0.0	0.7
20150831	6200087		700	0	-0.0	0.5
20150831	6200091		728	0	-0.2	0.5
20150831	6200092		744	1	0.1	0.5
20150831	6200093		744	0	0.3	0.5
20150831	6200094		743	0	-0.0	0.4
20150831	6200095		744	0	-0.0	0.5
20150831	6200163		742	0	0.1	0.4
20150831	6200191		665	0	0.1	0.4
20150831	6200192		420	0	0.5	0.4
20150831	6200303		638	1	0.1	0.5
20150831	6400045		744	0	0.1	0.4
20150831	6400046		742	1	0.3	0.4

### Air Temperature (C), moored buoys, August 2015

Datend	WMO	Telcom	Recvd	GE	Bias	Std
20150831	1300130		299	0	-0.2	0.3
20150831	1300131		350	0	1.2	0.4
20150831	6100001		741	0	-0.3	0.9
20150831	6100002		735	0	0.1	0.7
20150831	6100198		401	33	-0.5	2.4
20150831	6100280		692	0	0.1	0.7
20150831	6100281		732	0	-0.1	0.7
20150831	6100417		408	0	0.1	0.5
20150831	6100430		729	0	1.1	0.6
20150831	6101008		223	0	0.5	0.9
20150831	6200001		744	0	-0.2	0.6
20150831	6200024		734	0	0.2	0.7

## E-SURFMAR DB Monthly Report August 2015

20150831	6200025	715	0	-0.0	0.9
20150831	6200029	716	0	0.0	0.5
20150831	6200030	742	0	-0.6	0.6
20150831	6200081	744	0	-0.3	0.4
20150831	6200082	730	0	0.1	0.7
20150831	6200083	733	0	0.3	0.8
20150823	6200084	537	0	-0.3	0.6
20150831	6200085	693	0	-0.3	0.8
20150831	6200086	665	0	-0.1	0.6
20150831	6200087	700	0	-0.1	0.6
20150831	6200091	728	0	-0.0	0.5
20150831	6200092	744	0	-0.0	0.4
20150831	6200093	744	0	-0.2	0.4
20150831	6200094	743	0	0.0	0.4
20150831	6200095	742	0	-0.5	0.4
20150831	6200163	742	0	0.0	0.4
20150831	6200191	665	0	-0.3	0.8
20150831	6200192	420	0	0.2	0.7
20150831	6200303	577	2	-0.1	0.4
20150831	6400045	744	0	-0.3	0.4
20150831	6600021	743	0	0.2	0.6
20150831	6600022	713	1	0.4	0.8
20150831	6600024	744	0	0.0	0.9

### Wind direction (deg.), moored buoys, August 2015

Datend	WMO	Telcom	Recvd	GE	Bias	Std
20150831	1300130		299	0	18	9
20150831	1300131		347	34	6	27
20150831	6100001		741	68	-2	31
20150831	6100002		725	28	1	20
20150831	6100197		721	31	-12	26
20150831	6100198		157	26	0	34
20150831	6100280		671	31	-3	32
20150831	6100281		727	42	2	34
20150831	6100417		134	1	-4	23
20150831	6100430		730	25	-7	31
20150831	6101008		223	32	9	36
20150831	6200001		743	11	-2	20
20150831	6200024		725	38	1	29
20150831	6200025		704	72	-3	33
20150831	6200027		213	9	-6	38
20150831	6200029		716	1	3	16
20150831	6200081		743	5	-2	17
20150831	6200082		728	21	-0	23
20150831	6200083		729	18	-4	24
20150823	6200084		532	14	-2	24
20150831	6200085		687	15	-7	25
20150831	6200086		671	13	5	15
20150831	6200087		696	14	-3	18
20150831	6200091		727	15	-2	20
20150831	6200092		744	13	7	24
20150831	6200093		743	7	6	15
20150831	6200094		743	9	-0	18
20150831	6200095		716	1	-3	13
20150831	6200163		741	7	0	15
20150831	6200191		663	22	-9	26
20150831	6200192		417	10	3	22
20150831	6200303		635	19	0	21
20150831	6200442		705	2	4	19
20150831	6400046		742	12	6	16
20150831	6600021		742	5	-1	17
20150831	6600022		709	8	0	19
20150831	6600024		743	14	1	21

### Wind speed rate, moored buoys, August 2015

Datend	WMO	Telcom	Recvd	GE	Rate	Err
20150831	1300130		299	0	0.8	1.1
20150831	1300131		347	0	0.8	2.7
20150831	6100001		741	1	1.4	1.5
20150831	6100002		725	0	1.2	1.5
20150831	6100197		721	1	1.2	1.2

## E-SURFMAR DB Monthly Report August 2015

20150831	6100198	157	0	0.8	1.7
20150831	6100280	671	0	1.2	1.3
20150831	6100281	727	0	1.5	1.9
20150831	6100417	134	0	0.9	1.1
20150831	6100430	730	1	1.6	1.5
20150831	6101008	223	0	1.1	1.6
20150831	6200001	743	0	1.1	1.3
20150831	6200024	725	0	1.3	1.6
20150831	6200025	704	0	0.9	2.1
20150831	6200027	213	0	1.1	1.4
20150831	6200029	716	0	1.0	1.2
20150831	6200081	743	0	1.1	1.2
20150831	6200082	728	1	1.2	2.1
20150831	6200083	729	0	1.0	1.6
20150823	6200084	532	0	0.9	1.4
20150831	6200085	687	0	0.9	1.9
20150831	6200086	664	0	1.1	1.3
20150831	6200087	696	0	1.1	1.3
20150831	6200091	727	0	1.0	1.6
20150831	6200092	744	0	1.0	1.6
20150831	6200093	743	0	1.0	1.4
20150831	6200094	743	0	1.0	1.4
20150831	6200095	716	0	1.0	1.2
20150831	6200163	741	0	1.1	1.2
20150831	6200191	663	0	0.9	1.7
20150831	6200192	417	0	1.1	1.3
20150831	6200303	635	0	1.0	1.5
20150831	6200442	705	0	1.0	1.2
20150831	6400046	742	0	1.0	1.4
20150831	6600021	742	1	1.2	1.5
20150831	6600022	709	0	1.2	1.2
20150831	6600024	743	0	1.2	1.5

### Comments on QC statistics :

#### Air pressure

1. Metocean buoy WMO **6200514** reported wrong pressure data in the middle of August for unknown reasons before it ceased to emit.
2. Spanish moored buoy WMO **6100417** (Cabo de Palos) always presented a systematic bias for about 1.3 hPa during the month.
3. Greek moored buoy WMO **6101008** reported wrong pressure data sometimes, mostly in the end of August.

#### Air temperature

4. Spanish moored buoy **6100198** (Cabo de Gata) continued to report wrong temperature data but the GTS data transmission was not stopped for this parameter.

Monthly QC statistics and other data quality control tools are available on line at :  
<http://www.meteo.shom.fr/qctools/>

The working area of the E-SURFMAR website is open at <http://esurfmar.meteo.fr/wikisurf-wa/> . Ask the E-SURFMAR Programme Manager [Pierre.Blouch@meteo.fr](mailto:Pierre.Blouch@meteo.fr) for the password in case you forgot it. Graphs of system performances June be displayed/downloaded at [http://esurfmar.meteo.fr/doc/r/surfmar/others/e-surfmar\\_monitoring.pdf](http://esurfmar.meteo.fr/doc/r/surfmar/others/e-surfmar_monitoring.pdf).