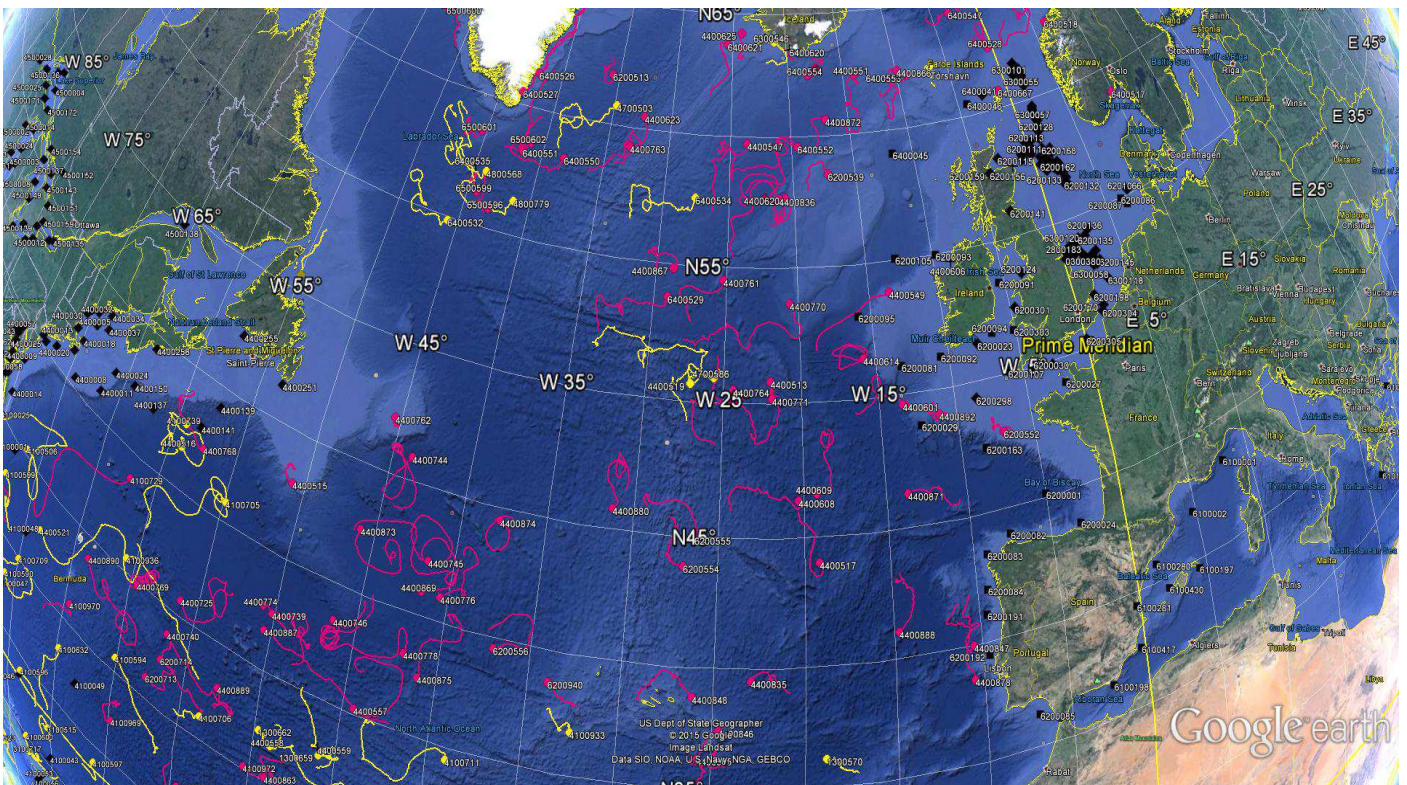


DATA BUOY MONTHLY REPORT

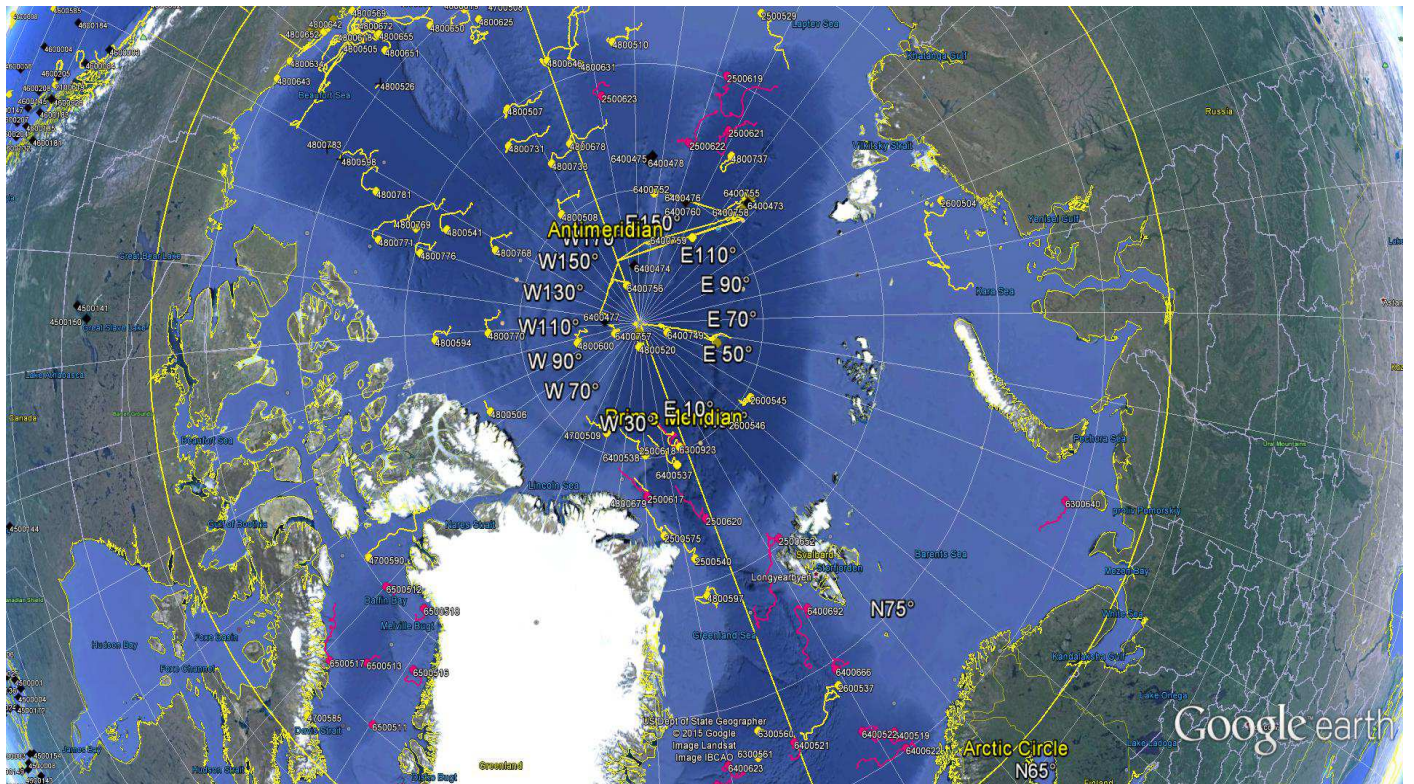
September 2015



*September 2015 : Operating data buoys in the North Atlantic
Drifting buoy trajectories : E-SURFMAR (red), others (yellow)
Moored buoy positions (black)*

*Most recent trajectories may be seen at:
http://www.meteo.shom.fr/cartographie/data/kml/MeteoFrance_buoys_map_15.kmz*

E-SURFMAR DB Monthly Report September 2015



September 2015
Drifting buoy trajectories in Arctic Ocean and adjacent seas : E-SURFMAR (red), others (yellow)

DRIFTING BUOYS

Network status

By the end of September, **146 Drifting buoys**, reporting air pressure onto the GTS, were in operation in the frame of E-SURFMAR. Out of these, 109 were E-SURFMAR funded Iridium SVP-Bs, including 7 in the Arctic, 7 in AtlantOS activities and 9 HRSST-2 buoys. The remaining buoys were: 37 drifters owned by NOAA and upgraded with barometers by E-SURFMAR.

Information about the availability of buoys for future deployments may be get from the E-SURFMAR wikisite (working area) at: http://esurfmar.meteo.fr/wikisurf-wa/index.php/Availability_of_drifting_buoys

Besides E-SURFMAR buoys, 68 drifting buoys were reporting at least air pressure observations from the EUMETNET area of interest. Out of these, only one was reporting Sea Surface Salinity.

Drifting buoys - New deployments

WMO	Telcom	Typ	Ow	Dep_Date	DepLat	DepLon	From	Comment
	62852920	MSB	EU	20150905	82.7	124.4	Kirkenes	Akademik Tryoshnikov (Failed at deployment)
	62854890	MSB	EU	20150911	79.3	168.0	Kirkenes	Akademik Tryoshnikov (Failed at deployment)
	62853910	MSB	EU	20150913	80.5	171.3	Kirkenes	Akademik Tryoshnikov (Failed at deployment)
	62959450	MSB	EU	20150913	80.0	178.0	Kirkenes	Akademik Tryoshnikov (Failed at deployment)
2500619	62856890	MSB	EU	20150903	79.4	125.8	Kirkenes	Akademik Tryoshnikov
2500621	62956120	MSB	EU	20150904	80.9	125.8	Kirkenes	Akademik Tryoshnikov
2500622	62850900	MSB	EU	20150906	81.3	136.5	Kirkenes	Akademik Tryoshnikov
2500623	62955110	MSB	EU	20150912	80.7	166.4	Kirkenes	Akademik Tryoshnikov
6400553	62954270	MSB	EU	20150912	61.3	-12.0	Rotterdam	Lagarfoss
6400554	62958280	MSB	EU	20150913	62.6	-17.0	Rotterdam	Lagarfoss
6500511	62857900	MSB	EU	20150914	70.0	-59.6	Brest	RHM Malabar
6500512	62951440	MSB	EU	20150916	75.0	-67.5	Brest	RHM Malabar
6500513	62953460	MSB	EU	20150915	72.8	-63.8	Brest	RHM Malabar
6500518	62959430	MSB	EU	20150904	75.3	-63.7	Reykjavik	Nanuq
6500603	62959440	MSB	EU	20150913	65.0	-53.0	Brest	RHM Malabar

Operating drifting buoys in North Atlantic by the end of the month

WMO	Telcom	Typ	Ow	nobs	Wi	AT	AP	dP	ST	Wa	Ws	Dr	Sb	U	SS	O	Start_end	Lat	Lon	Age
1300868	11686410	MSB	EU	442	-	-	X	-	X	-	-	X	-	-	-	T	0109-3009	32.38	-15.15	314
1300869	11688410	MSB	EU	720	-	-	X	-	X	-	-	X	-	-	-	T	0109-3009	23.36	-38.80	312
1300870	61512860	MSB	EU	720	-	-	X	-	X	-	-	X	-	-	-	T	0109-3009	31.62	-17.06	202
1300871	61516870	MSB	EU	565	-	-	X	-	X	-	-	X	-	-	-	T	0109-3009	25.68	-33.43	200
1300872	61611050	MSB	EU	718	-	-	X	-	X	-	-	X	-	-	-	T	0109-3009	26.34	-26.85	201
2500617	61767070	MSB	EU	720	-	-	X	-	X	-	-	-	-	-	-	T	0109-3009	83.61	-19.42	375
2500618	11020180	MSB	EU	720	-	-	X	-	-	-	-	X	-	-	-	T	0109-3009	85.10	-1.82	163
2500619	62856890	MSB	EU	656	-	-	X	-	X	-	-	-	-	-	-	T	0309-3009	79.89	137.52	28
2500620	61760090	MSB	EU	720	-	-	X	-	X	-	-	-	-	-	-	T	0109-3009	82.32	-1.68	369
2500621	62956120	MSB	EU	636	-	-	X	-	X	-	-	-	-	-	-	T	0409-3009	81.87	131.74	27
2500622	62850900	MSB	EU	568	-	-	X	-	X	-	-	-	-	-	-	T	0709-3009	82.93	141.63	24
2500623	62955110	MSB	EU	400	-	-	X	-	X	-	-	-	-	-	-	T	1409-3009	81.14	169.01	17
4100729	62321360	MSB	EU	720	-	-	X	-	X	-	-	X	-	-	-	T	0109-3009	38.97	-61.99	127
4100730	62326350	MSB	EU	720	-	-	X	-	X	-	-	X	-	-	-	T	0109-3009	30.87	-75.92	126
4100731	62329360	MSB	EU	720	-	-	X	-	X	-	-	X	-	-	-	T	0109-3009	26.90	-54.45	132
4100969	60213780	PSB	UP	720	-	-	X	-	X	-	-	X	-	-	-	T	0109-3009	27.47	-59.68	784
4100970	60213790	PSB	UP	720	-	-	X	-	X	-	-	X	-	-	-	T	0109-3009	31.17	-64.35	783
4100972	60217780	PSB	UP	720	-	-	X	-	X	-	-	X	-	-	-	T	0109-3009	30.21	-50.28	783
4400513	61475450	DSB	UP	719	-	-	X	-	X	-	-	X	-	-	-	T	0109-3009	50.82	-21.99	206
4400515	61476450	DSB	UP	720	-	-	X	-	X	-	-	X	-	-	-	T	0109-3009	43.03	-50.80	208
4400517	61477390	DSB	UP	719	-	-	X	-	X	-	-	X	-	-	-	T	0109-3009	44.06	-19.16	205
4400546	11160640	MSB	EU	721	-	-	X	-	X	-	-	X	-	-	-	T	0109-3009	26.43	-46.23	925
4400547	60173710	MSB	EU	720	-	-	X	-	X	-	-	X	-	-	-	T	0109-3009	59.73	-23.63	416

E-SURFMAR DB Monthly Report September 2015

6400521	11470030	MSB	EU	721	-	-	X	-	X	-	-	X	-	-	-	T	0109-3009	72.80	-0.24	871
6400522	61511870	MSB	EU	598	-	-	X	-	X	-	-	X	-	-	-	T	0109-3009	71.83	8.75	404
6400523	61510870	MSB	EU	718	-	-	X	-	X	-	-	X	-	-	-	T	0109-3009	65.42	-1.50	326
6400524	61619040	MSB	EU	718	-	-	X	-	X	-	-	X	-	-	-	T	0109-3009	66.90	13.41	326
6400525	60175710	MSB	EU	720	-	-	X	-	X	-	-	X	-	-	-	T	0109-3009	71.19	-11.75	775
6400526	61611070	MSB	EU	644	-	-	X	-	X	-	-	X	-	-	-	T	0109-3009	61.39	-42.10	324
6400527	61514840	MSB	EU	713	-	-	X	-	X	-	-	X	-	-	-	T	0109-3009	60.52	-43.01	323
6400528	61471310	DSB	UP	720	-	-	X	-	X	-	-	X	-	-	-	T	0109-3009	62.50	-0.46	106
6400529	11027150	MSB	EU	720	-	-	X	-	-	-	-	X	-	-	-	T	0109-3009	53.78	-29.04	107
6400530	61470290	DSB	UP	720	-	-	X	-	X	-	-	X	-	-	-	T	0109-3009	67.17	1.49	106
6400547	61473300	DSB	UP	720	-	-	X	-	X	-	-	X	-	-	-	T	0109-3009	64.30	-3.19	105
6400549	60898120	MSB	EU	720	-	-	X	-	X	-	-	X	-	-	-	T	0109-3009	62.72	-17.42	103
6400550	11463700	MSB	UP	720	-	-	X	-	X	-	-	X	-	-	-	T	0109-3009	58.35	-38.17	100
6400551	11795230	MSB	E2	716	-	-	X	-	X	-	-	X	-	-	-	T	0109-3009	58.26	-41.59	100
6400552	10822640	MSB	EU	720	-	-	X	-	X	-	-	X	-	-	-	T	0109-3009	59.62	-19.53	97
6400553	62954270	MSB	EU	400	-	-	X	-	X	-	-	X	-	-	-	T	1409-3009	62.08	-9.07	19
6400554	62958280	MSB	EU	400	-	-	X	-	X	-	-	X	-	-	-	T	1409-3009	62.46	-18.21	18
6400606	61515870	MSB	EU	720	-	-	X	-	X	-	-	X	-	-	-	T	0109-3009	67.59	6.68	252
6400615	60173700	MSB	EU	720	-	-	X	-	X	-	-	X	-	-	-	T	0109-3009	71.58	-17.04	691
6400620	60899130	MSB	EU	586	-	-	X	-	S	-	-	X	-	-	-	T	0109-2909	63.52	-19.69	186
6400621	61614070	MSB	EU	678	-	-	X	-	X	-	-	X	-	-	-	T	0109-3009	63.70	-25.50	186
6400622	60172810	MSB	EU	720	-	-	X	-	X	-	-	X	-	-	-	T	0109-3009	70.11	12.45	776
6400623	11470040	MSB	EU	720	-	-	X	-	X	-	-	X	-	-	-	T	0109-3009	72.74	-10.07	872
6400666	60179710	MSB	EU	720	-	-	X	-	X	-	-	X	-	-	-	T	0109-3009	74.65	9.82	672
6400667	61615060	MSB	EU	712	-	-	X	-	-	-	-	X	-	-	-	T	0109-3009	60.70	-1.00	644
6400668	60177860	MSB	EU	720	-	-	X	-	X	-	-	X	-	-	-	T	0109-3009	72.00	-12.16	648
6400692	60172720	MSB	EU	720	-	-	X	-	X	-	-	X	-	-	-	T	0109-3009	77.35	10.83	587
6500511	62857900	MSB	EU	375	-	-	X	-	X	-	-	X	-	-	-	T	1509-3009	70.14	-59.72	17
6500512	62951440	MSB	EU	290	-	-	X	-	X	-	-	X	-	-	-	T	1609-3009	75.12	-69.84	15
6500513	62953460	MSB	EU	352	-	-	X	-	X	-	-	X	-	-	-	T	1609-3009	72.09	-64.87	16
6500514	62954450	MSB	EU	720	-	-	X	-	X	-	-	X	-	-	-	T	0109-3009	62.79	-56.15	69
6500515	62858710	MSB	EU	612	-	-	X	X	S	-	-	X	-	-	-	T	0109-3009	68.31	-53.46	45
6500516	62954440	MSB	EU	720	-	-	X	-	X	-	-	X	-	-	-	T	0109-3009	73.38	-58.95	36
6500517	62957440	MSB	EU	720	-	-	X	-	X	-	-	X	-	-	-	T	0109-3009	70.80	-68.82	35
6500518	62959430	MSB	EU	568	-	-	X	-	X	-	-	X	-	-	-	T	0709-3009	75.72	-62.91	27
6500596	61511850	MSB	EU	719	-	-	X	-	X	-	-	X	-	-	-	T	0109-3009	55.77	-42.99	469
6500599	62326370	MSB	EU	720	-	-	X	-	X	-	-	X	-	-	-	T	0109-3009	56.26	-44.22	144
6500601	62320360	MSB	EU	718	-	-	X	-	X	-	-	X	-	-	-	T	0109-3009	58.59	-45.32	141
6500602	62323360	MSB	EU	720	-	-	X	-	X	-	-	X	-	-	-	T	0109-3009	58.63	-41.10	141
6500603	62959440	MSB	EU	401	-	-	X	-	X	-	-	X	-	-	-	T	1409-3009	65.81	-53.95	18

----- Operating AtlantOS drifting buoys by the end of the month

WMO	Telcom	Typ	Ow	nobs	Wi	AT	AP	dP	ST	Wa	Ws	Dr	Sb	U	SS	O	Start_end	Lat	Lon	Age
1500681	61661310	MSB	EU	720	-	-	X	-	X	-	-	X	-	-	-	T	0109-3009	-13.45	-9.41	166
1500682	61663300	MSB	EU	720	-	-	X	-	X	-	-	X	-	-	-	T	0109-3009	-10.47	-3.44	167
1500683	61663370	MSB	EU	720	-	-	X	-	X	-	-	X	-	-	-	T	0109-3009	-9.23	-28.80	168
1500684	62328350	MSB	EU	720	-	-	X	-	X	-	-	X	-	-	-	T	0109-3009	-4.90	-20.61	167
1500685	62854900	MSB	EU	720	-	-	X	-	X	-	-	X	-	-	-	T	0109-3009	-6.44	-6.36	34
1500686	62959110	MSN	EU	720	-	-	X	-	X	-	-	X	-	-	-	T	0109-3009	-5.38	-13.05	34
1500688	62958430	MSB	EU	680	-	-	X	-	X	-	-	X	-	-	-	T	0109-3009	-8.40	-1.68	34

----- Drifting buoys which ceased to be operational

WMO	Telcom	Typ	Ow	End_Date	Lat	Lon	Age	Cause
4100971	60215900	PSB	UP	20150909	32.6	-16.9	762	Ashore in Madeira
4400606	11162640	MSB	EU	20150924	54.7	-8.8	351	Ashore in Ireland
4400621	61519840	MSB	EU	20150908	57.7	-1.9	577	Ashore in Scotland
6400613	60174710	MSB	EU	20150905	69.4	-21.3	735	Faded (Battery empty)
6500600	62326360	MSB	EU	20150911	62.7	-53.0	124	Unknown

E-SURFMAR DB Monthly Report September 2015

Non-operating drifting buoys reporting GTS data

WMO	Telcom	Typ	Ow	nobs	Wi	AT	AP	dP	ST	Wa	Ws	Dr	Sb	U	SS	O	Start_end	Lat	Lon	Age
2500624	60247420	MSB	EU	720	-	-	-	-	X	-	-	-	-	-	-	T	0109-3009	65.84	-8.43	761
2500652	60176700	MSB	EU	720	-	-	S	-	X	-	-	-	-	-	-	T	0109-3009	80.24	13.35	749
4400604	11794240	MSB	E2	720	-	-	-	-	X	-	-	X	-	-	-	T	0109-3009	44.79	-33.61	358
4400875	61616040	MSB	EU	720	-	-	S	-	X	-	-	X	-	-	-	T	0109-3009	37.57	-41.01	58
6500595	11595570	MSB	EU	720	-	-	-	-	X	-	-	X	-	-	-	T	0109-3009	51.74	-36.23	471

Other operating drifting buoys inside the EUMETNET area by the end of the month

WMO	Telcom	Owner	nobs	Wi	AT	AP	dP	ST	Wa	Ws	Dr	Sb	U	SS	O	Start_end	Lat	Lon
1300515	114951	AOML	693	-	-	X	-	X	-	-	X	-	-	-	L	0109-3009	25.57	-51.49
1300517	114943	AOML	684	-	-	X	-	X	-	-	X	-	-	-	L	0109-3009	14.36	-42.01
1300519	127004	AOML	707	-	-	X	X	X	-	-	X	-	-	-	L	0109-3009	22.64	-39.36
1300525	127003	AOML	715	-	-	X	X	X	-	-	X	-	-	-	L	0109-3009	6.38	-14.52
1300530	114916	AOML	687	-	-	X	-	X	-	-	X	-	-	-	L	0109-3009	7.85	-17.00
1300531	114921	AOML	682	-	-	X	-	X	-	-	X	-	-	-	L	0109-3009	15.97	-63.95
1300569	114880	AOML	686	-	-	X	-	X	-	-	X	-	-	-	L	0109-3009	26.97	-33.10
1300570	116474	AOML	712	-	-	X	-	X	-	-	X	-	-	-	L	0109-3009	36.28	-18.90
1300572	127002	AOML	719	-	-	X	X	X	-	-	X	-	-	-	L	0109-3009	31.12	-32.86
1300633	109491	AOML	715	-	-	X	X	X	-	-	X	-	-	-	L	0109-3009	34.74	-28.62
1300659	11910180	UKMO	720	-	-	X	-	X	-	-	X	-	-	-	T	0109-3009	32.58	-45.91
1300660	11022040	UKMO	720	-	-	X	-	X	-	-	X	-	-	-	T	0109-3009	27.97	-46.35
1300661	62325770	UKMO	720	-	-	X	-	-	-	-	X	-	-	-	T	0109-3009	11.10	-27.46
1300662	11098800	UKMO	720	-	-	X	-	X	-	-	X	-	-	-	T	0109-3009	32.33	-49.65
1500951	10450430	CMM	644	-	-	X	-	X	-	-	X	-	-	-	T	0109-3009	1.67	4.26
2100942	119223	UKMO	714	-	-	X	X	X	-	-	X	-	-	-	L	0109-3009	28.35	-40.53
2500540		APL	721	-	-	X	X	X	-	-	-	-	-	-	L	0109-3009	81.01	-7.67
2500575			720	-	-	X	X	X	-	-	-	-	-	-	L	0109-3009	82.09	-14.93
2600537	61369210	PSC	720	-	-	X	X	X	-	-	X	-	-	-	O	0109-3009	74.03	8.96
2600545			720	-	X	X	X	-	-	-	S	-	-	-	O	0109-3009	84.74	36.52
2600546			720	-	X	X	X	-	-	-	X	-	-	-	O	0109-3009	84.85	22.67
3100515	114946	AOML	694	-	-	X	-	X	-	-	X	-	-	-	L	0109-3009	22.91	-65.20
3100717	61614160	CMM	720	-	-	X	-	X	-	-	X	-	-	-	T	0109-3009	19.22	-67.33
3100720	62652340	CMM	1439	-	-	X	-	X	-	-	X	-	-	X	T	0109-3009	2.40	8.62
3100863	61611040	CMM	720	-	-	X	-	X	-	-	X	-	-	-	T	0109-3009	19.32	-58.41
4100564	109221	AOML	688	-	-	X	-	X	-	-	X	-	-	-	L	0109-3009	29.18	-31.33
4100591	132678	AOML	714	-	-	X	X	X	-	-	X	-	-	-	L	0109-3009	18.56	-57.41
4100594	127029	AOML	718	-	-	X	X	X	-	-	X	-	-	-	L	0109-3009	30.86	-59.98
4100596	11473050	CMM	718	-	-	X	-	X	-	-	X	-	-	-	T	0109-3009	24.21	-68.35
4100597	61512840	AOML	720	-	-	X	-	X	-	-	X	-	-	-	T	0109-3009	24.07	-60.85
4100600	61618040	AOML	720	-	-	X	-	X	-	-	X	-	-	-	T	0109-3009	20.16	-67.67
4100632	11474050	CMM	720	-	-	X	-	X	-	-	X	-	-	-	T	0109-3009	28.41	-64.70
4100635	61475300	CMM	718	-	-	X	-	X	-	-	X	-	-	-	T	0109-3009	22.88	-42.46
4100637	62859910	CMM	629	-	-	X	-	X	-	-	X	-	-	-	T	0109-3009	16.73	-49.10
4100638	62955440	CMM	720	-	-	X	-	X	-	-	X	-	-	-	T	0109-3009	13.82	-47.77
4100705	11596570	AOML	720	-	-	X	-	X	-	-	X	-	-	-	T	0109-3009	40.86	-54.78
4100706	11595580	AOML	720	-	-	X	-	X	-	-	X	-	-	-	T	0109-3009	31.26	-53.49
4100707	62957110	CMM	720	-	-	X	-	X	-	-	X	-	-	-	T	0109-3009	12.34	-56.22
4100708	62958100	CMM	720	-	-	X	-	X	-	-	X	-	-	-	T	0109-3009	8.50	-38.65
4100709	11598570	AOML	78	-	-	X	-	X	-	-	X	-	-	-	T	2709-3009	30.18	-69.82
4100711	11477030	EUME	720	-	-	X	-	X	-	-	X	-	-	-	T	0109-3009	34.51	-38.89
4100739	11912120	UKMO	720	-	-	X	-	X	-	-	X	-	-	-	T	0109-3009	42.72	-59.16
4100904			2500	X	-	X	-	X	-	-	X	-	-	-	L	0109-3009	14.91	-59.95
4100933	101721	AOML	197	-	-	X	X	X	-	-	X	-	-	-	L	0509-3009	36.88	-32.44
4100936	109488	AOML	717	-	-	X	X	-	-	-	X	-	-	-	L	0109-3009	35.69	-60.65
4100975	109439	AOML	711	-	-	X	X	X	-	-	X	-	-	-	L	0109-3009	33.83	-25.63
4400516	114599	AOML	696	-	-	X	X	X	-	-	X	-	-	-	L	0109-3009	41.76	-58.97
4400519	70840		720	-	-	X	X	X	-	-	X	-	-	-	L	0109-3009	50.67	-27.14
4400521	133133		721	-	-	X	X	X	-	-	X	-	-	-	L	0109-3009	32.85	-68.28
4400558	123286	AOML	719	-	-	X	X	X	-	-	X	-	-	-	L	0109-3009	31.88	-48.81
4400670			720	-	-	X	X	X	-	-	X	-	-	-	O	0109-3009	50.62	-54.95
4400896	109438	AOML	716	-	-	X	X	X	-	-	X	-	-	-	L	0109-3009	28.48	-48.48
4700503		APL	721	-	-	X	X	X	-	-	-	-	-	-	L	0109-3009	60.77	-34.76
4700509			720	-	X	X	X	-	-	-	X	-	-	-	O	0109-3009	85.74	-40.76
4700585	11541430	EC	720	-	-	X	X	X	-	-	X	-	-	-	O	0109-3009	68.08	-66.68

E-SURFMAR DB Monthly Report September 2015

4700586	11541440	EC	720	-	-	X	X	X	-	-	X	-	-	-	O	0109-3009	50.93	-25.65
4800520			703	-	X	X	-	X	-	-	X	-	-	-	L	0109-3009	89.12	-23.80
4800568	61363210	PSC	720	-	-	X	X	X	-	-	X	-	-	-	O	0109-3009	57.12	-43.94
4800597	100009	PSC	1181	X	X	X	-	-	-	-	X	-	-	-	O	0109-3009	79.53	-6.95
6300546	61361200	PSC	720	-	-	X	X	X	-	-	X	-	-	-	O	0109-3009	63.85	-21.12
6300560	60654120		720	-	-	X	-	X	-	-	X	-	-	-	L	0109-3009	73.80	-4.65
6300561	60654200		720	-	-	X	-	X	-	-	X	-	-	-	L	0109-3009	72.74	-5.72
6300923		EC	720	-	X	X	X	-	-	-	X	-	-	-	O	0109-3009	85.17	-2.59
6400532			720	-	-	X	X	X	-	-	-	-	-	-	L	0109-3009	54.88	-45.70
6400534			723	-	-	X	X	X	-	-	-	-	-	-	L	0109-3009	57.56	-27.57
6400537		EC	240	X	X	X	X	X	-	-	X	-	X	-	O	0109-3009	84.57	-5.92
6400538		EC	710	-	X	X	X	-	-	-	S	-	-	-	O	0109-3009	85.14	-19.53
6400748			362	-	X	X	X	X	-	-	X	-	-	-	O	2209-3009	89.64	-31.67

----- Abbreviations -----

WMO : WMO id.
 Telcom : Telcom id.
 Typ : Buoy type
 - first character : Manufacturer (D = DBI , M = Metocean, P = Pacific Gyre
 T = Technocean, Y = Marlin-Yug...)
 - second character : Main type (F = FGGE, I = ICEB, S = SVP)
 - third character : Sub type (B = barometer buoy, W = Wind buoy,
 S = Salinity buoy)

Ow : Buoy owner (country code or EU for EUCOS, E2 for HRSST-2 buoys, UP for upgraded
 buoys)

Owner : Buoy owner for non EUCOS buoys
 Nobs : number of GTS reports received at Meteo-France
 Parameters (X = OK, S = stopped, - = not measured) :
 Wi : Wind
 AT : Air Temperature
 AP : Air Pressure
 dP : Air pressure tendency
 ST : Sea surface Temperature
 Wa : Wave period and height
 Ws : Wave spectra
 Dr : Drogue presence
 Sb : Subsurface temperature
 U : Relative humidity
 SS : Sea surface Salinity

O : Origin of the reports (T = CLS Toulouse, L = CLS America, O = Other)

Start_end : first and last dates of the month for which GTS data were received at Meteo-France
 Lat : Latitude of the latest position
 Lon : Longitude of the latest position
 Age : Age of the buoy (days)
 DepDate : Date of deployment
 DepLat : Latitude of deployment
 Dep Lon : Longitude of Deployment
 From : Harbour of departure

Definition : An operating drifting buoy is a buoy providing at least air pressure or wind
 (direction and velocity) data.

**E-SURFMAR DB Monthly Report
September 2015**

MOORED BUOYS

Former EGOS stations (K-pattern and Hydrosphere)

WMO	Name	nobs	Wi	AT	AP	dP	ST	Wa	Ws	Dr	Sb	U	SS	O	Start_end	Lat	Lon
6100001	Cote d'Azur	718	X	X	X	X	X	X	X	-	-	X	-	T	0109-3009	43.40	7.80
6100002	Lion	719	X	X	X	X	X	X	X	-	-	X	-	T	0109-3009	42.10	4.70
6200001	Gascogne	720	X	X	X	X	X	X	-	-	-	X	-	O	0109-3009	45.30	-5.00
6200029	K1	678	X	X	X	-	X	X	-	-	-	X	-	O	0109-3009	48.70	-12.50
6200081	K2	721	X	X	X	X	X	X	-	-	-	-	-	O	0109-3009	51.00	-13.20
6200090	M1	-	-	-	-	-	-	-	-	-	-	-	-	-	-	-	-
6200091	M2	718	X	X	X	-	X	X	-	-	-	X	-	O	0109-3009	53.50	-5.40
6200092	M3	718	X	X	X	-	-	X	-	-	-	S	-	O	0109-3009	51.20	-10.50
6200093	M4	718	X	X	X	-	X	-	-	-	-	-	-	O	0109-3009	54.70	-9.10
6200094	M5	717	X	X	X	-	-	X	-	-	-	-	-	O	0109-3009	51.70	-6.70
6200095	M6	788	X	X	X	X	X	X	-	-	-	X	-	O	0109-3009	53.10	-15.90
6200105	K4	680	X	X	X	X	X	X	-	-	-	X	-	O	0209-3009	55.80	-11.40
6200108	K3	-	-	-	-	-	-	-	-	-	-	-	-	-	-	-	-
6200163	Brittany	720	X	X	X	X	X	X	X	-	-	X	-	O	0109-3009	47.50	-8.40
6400045	K5	719	-	X	X	X	X	X	-	-	-	X	-	O	0109-3009	59.10	-11.70
6400046	K7	458	X	X	X	-	X	X	-	-	-	X	-	O	0109-3009	60.70	-5.20

Comments:

- EUMETNET moored buoys are presented in bold characters.

Former EGOS moored buoys (Spanish SeaWatch and WaveScan)

WMO	Name	nobs	Wi	AT	AP	dP	ST	Wa	Ws	Dr	Sb	U	SS	O	Start_end	Lat	Lon
1300130	Gran Canaria	704	X	X	X	-	X	X	X	-	-	-	X	O	0109-3009	28.18	-15.82
1300131	Tenerife Sur	708	X	X	X	-	X	X	X	-	-	-	X	O	0109-3009	28.00	-16.58
6100196	C. Begur	-	-	-	-	-	-	-	-	-	-	-	-	-	-	41.92	3.65
6100197	Mahon	637	S	-	S	-	-	S	S	-	-	-	-	-	0109-2709	39.72	4.42
6100198	C. de Gata	444	S	S	S	-	S	S	S	-	-	-	S	-	0109-2109	36.57	-2.33
6100280	Tarragona	707	X	X	X	-	X	X	X	-	-	-	X	O	0109-3009	40.77	1.47
6100281	Valencia	707	X	X	X	-	X	X	X	-	-	-	X	O	0109-3009	39.47	-0.27
6100417	C. de Palos	668	X	X	X	-	X	X	X	-	-	-	X	O	0109-3009	37.65	-0.32
6100430	Dragonera	709	X	X	X	-	-	X	X	-	-	-	-	O	0109-3009	39.56	2.11
6200024	Bilbao-Visc.	709	X	X	X	-	X	X	X	-	-	-	X	O	0109-3009	43.63	-3.03
6200025	C. de Penas	220	S	S	S	-	S	S	S	-	-	-	S	-	0109-1909	43.73	-6.17
6200082	E. de Bares	711	X	X	X	-	X	X	X	-	-	-	X	O	0109-3009	44.13	-7.69
6200083	Villano-Sis.	713	X	X	X	-	X	X	X	-	-	-	X	O	0109-3009	43.48	-9.22
6200084	C. Silleiro	706	X	X	X	-	X	X	X	-	-	-	X	O	0109-3009	42.12	-9.43
6200085	G. de Cadiz	706	X	X	X	-	X	X	X	-	-	-	X	O	0109-3009	36.48	-6.97
6201030	Santander	-	-	-	-	-	-	-	-	-	-	-	-	-	-	43.84	-3.77

Comments:

- The EUMETNET buoy is presented in bold characters.

Operating POSEIDON moored buoys (Greece)

WMO	Name	nobs	Wi	AT	AP	dP	ST	Wa	Ws	Dr	Sb	U	SS	O	Start_end	Lat	Lon
6101000		-	-	-	-	-	-	-	-	-	-	-	-	-	-	39.10	24.50
6101001		-	-	-	-	-	-	-	-	-	-	-	-	-	-	37.60	23.60
6101002		-	-	-	-	-	-	-	-	-	-	-	-	-	-	37.00	22.10
6101003		153	X	-	X	-	-	X	-	-	-	-	-	O	1109-3009	40.00	24.70
6101004		-	-	-	-	-	-	-	-	-	-	-	-	-	-	39.10	25.80
6101005		-	-	-	-	-	-	-	-	-	-	-	-	-	-	37.50	25.50
6101006		-	-	-	-	-	-	-	-	-	-	-	-	-	-	36.30	25.50
6101007		-	-	-	-	-	-	-	-	-	-	-	-	-	-	35.80	24.90
6101008		212	X	X	S	-	-	X	-	-	-	-	-	O	0109-3009	36.80	21.60
6101009		-	-	-	-	-	-	-	-	-	-	-	-	-	-	38.00	20.60

E-SURFMAR DB Monthly Report September 2015

Other European moored buoys (operated by 3rd parties)

WMO	Name	nobs	Wi	AT	AP	dP	ST	Wa	Ws	Dr	Sb	U	SS	O	Start_end	Lat	Lon
1200050	Cycofos		-	-	-	-	-	-	-	-	-	-	-			33.60	31.90
6100010	Italia-1		-	-	-	-	-	-	-	-	-	-	-			43.80	9.10
6200027	Jersey	244	X	-	X	X	-	X	-	-	-	-	-	O	0109-3009	49.08	-22.20
6200030	L4	714	-	X	X	-	-	-	-	-	-	X	-	O	0109-3009	50.25	-4.22
6200050	E1		-	-	-	-	-	-	-	-	-	-	-			50.04	-4.37
6200086	NSB II	692	X	X	X	X	X	-	-	-	-	X	-	O	0109-3009	55.00	6.40
6200087	NSB III	718	X	X	X	X	X	-	-	-	-	X	-	O	0109-3009	54.70	6.80
6200191	Porto	677	X	X	X	-	-	X	-	-	-	-	-	O	0109-3009	41.15	-9.57
6200192	Peniche	685	X	X	X	-	-	X	-	-	-	-	-	O	0109-3009	39.50	-9.65
6200303	Turbo Bank	615	X	X	X	X	X	X	-	-	-	X	-	O	0109-3009	51.60	-5.10
6200442	PAP	727	X	-	-	-	-	-	-	-	-	-	-	O	0109-3009	49.00	-16.40
6600021	Arkona Becken	720	X	X	-	-	X	X	-	-	-	-	-	O	0109-3009	54.90	13.90
6600022	Oder Bank	675	X	X	-	-	X	-	-	-	-	-	-	O	0109-3009	54.10	14.20
6600024	Darsser Schwelle	719	X	X	-	-	X	X	-	-	-	-	-	O	0109-3009	54.70	12.70

Other offshore moored buoys inside the EUMETNET area

WMO	Name	nobs	Wi	AT	AP	dP	ST	Wa	Ws	Dr	Sb	U	SS	O	Start_end	Lat	Lon
1300001		390	X	X	X	-	X	-	-	-	-	X	-	L	0109-3009	11.47	-23.00
1300008		322	X	X	X	-	X	-	-	-	-	X	-	L	0109-3009	14.98	-38.02
1300308	East Atlantic		-	-	-	-	-	-	-	-	-	-	-			15.00	-38.00
4100026		313	X	X	-	-	-	-	-	-	-	X	-	L	0109-3009	11.49	-38.40
4100040	West Atlantic	746	X	X	X	X	X	X	-	-	-	X	-	O	0109-3009	14.50	-53.00
4100041	Mid. Atlantic	748	X	X	X	X	X	X	-	-	-	X	-	O	0109-3009	14.50	-46.00
4100043	Porto Rico	744	X	X	X	X	X	X	-	-	-	X	-	O	0109-3009	21.00	-65.00
4100044		750	X	X	X	X	X	X	-	-	-	X	-	O	0109-3009	21.70	-58.70
4100046		748	X	X	X	X	X	X	-	-	-	X	-	O	0109-3009	23.90	-70.90
4100047			-	-	-	-	-	-	-	-	-	-	-			27.50	-71.50
4100048		747	X	X	X	X	X	X	-	-	-	X	-	O	0109-3009	32.00	-69.60
4100049		749	X	X	X	X	X	X	-	-	-	X	-	O	0109-3009	27.50	-53.00
4100139		377	X	X	X	-	X	-	-	-	-	X	-	L	0109-3009	20.02	-37.86
4100300	Antilles	701	X	X	X	X	X	X	-	-	-	X	-	T	0109-3009	15.85	-57.47
4200059	Caraibes	742	X	X	X	X	X	X	-	-	-	X	-	O	0109-3009	15.00	-67.50
4400008	A Nantucket	749	X	X	X	X	X	X	-	-	-	X	-	O	0109-3009	40.50	-69.40
4400011	D Georges Bk	751	X	X	X	X	X	X	-	-	-	X	-	O	0109-3009	41.10	-66.60
4400018	SE Cape Cod	748	X	X	X	X	X	X	-	-	-	X	-	O	0109-3009	41.30	-69.30
4400024	NNE Channel	689	X	X	X	-	X	X	-	-	-	-	-	O	0109-3009	42.30	-65.90
4400137	E Scotia Sl.	675	X	X	X	X	X	X	-	-	-	-	-	O	0109-3009	42.30	-62.00
4400138	SW Gd Banks		-	-	-	-	-	-	-	-	-	-	-			44.30	-53.60
4400139	Beanquereau	717	X	X	X	X	X	X	-	-	-	-	-	O	0109-3009	44.30	-57.10
4400140	Tail of Bk		-	-	-	-	-	-	-	-	-	-	-			43.80	-51.70
4400141	Larentian F	711	X	X	X	X	X	X	-	-	-	-	-	O	0109-3009	43.00	-58.00
4400150	La Have Bk	685	X	X	X	X	X	X	-	-	-	-	-	O	0109-3009	42.50	-64.00

E-SURFMAR DB Monthly Report September 2015

Buoy-QC statistics from Meteo-France model outputs

Datend : Date of the last value received on GTS
Recvd : Total number of values received on GTS
GE : Number of Gross Errors (excluded from bias and sd computations)
bias : Mean differences between observation values and co-located model output values
Std : Standard deviation of differences

Air Pressure (hPa), drifting buoys, September 2015

Datend	WMO	Telcom	Recvd	GE	Bias	Std
20150930	1300868	11686410	442	0	0.4	0.4
20150930	1300869	11688410	720	0	0.0	0.3
20150930	1300870	61512860	720	0	0.7	0.4
20150930	1300871	61516870	565	0	0.5	0.3
20150930	1300872	61611050	718	0	0.6	0.4
20150930	1500681	61661310	720	0	1.1	0.8
20150930	1500682	61663300	720	0	0.5	0.9
20150930	1500683	61663370	720	0	0.9	0.4
20150930	1500684	62328350	720	0	-0.1	0.5
20150930	1500685	62854900	720	0	0.0	0.9
20150930	1500686	62959110	720	0	-0.1	0.7
20150930	1500688	62958430	680	0	0.3	0.9
20150930	2500617	61767070	720	0	-0.3	0.5
20150930	2500618	11020180	720	0	0.2	0.3
20150930	2500619	62856890	453	26	-0.3	2.3
20150930	2500620	61760090	720	0	-0.0	0.3
20150930	2500621	62956120	636	0	-0.0	0.6
20150930	2500622	62850900	568	0	-0.0	0.4
20150930	2500623	62955110	400	0	-0.0	0.5
20150921	2500652	60176700	492	24	-0.1	2.1
20150930	4100635	61475300	718	0	0.3	0.4
20150930	4100637	62859910	629	0	0.3	0.5
20150930	4100638	62955440	277	0	-0.1	0.5
20150930	4100707	62957110	720	0	-0.2	0.7
20150930	4100708	62958100	720	0	-0.0	0.6
20150930	4100729	62321360	720	0	0.0	0.5
20150930	4100730	62326350	720	0	0.0	0.6
20150930	4100731	62329360	720	0	0.1	0.5
20150930	4100969	60213780	719	0	-0.4	0.6
20150930	4100970	60213790	720	0	0.2	0.5
20150908	4100971	60215900	182	18	-0.1	0.5
20150930	4100972	60217780	720	0	-0.0	0.4
20150930	4400513	61475450	719	0	0.5	0.5
20150930	4400515	61476450	720	0	0.1	0.5
20150930	4400517	61477390	719	0	0.3	0.5
20150930	4400546	11160640	721	0	-0.1	0.4
20150930	4400547	60173710	720	0	0.2	0.7
20150930	4400548	11799230	720	0	0.3	0.7
20150930	4400549	60896130	720	1	0.3	0.4
20150930	4400551	60892140	720	0	0.3	0.5
20150930	4400557	61568540	720	0	0.4	0.3
20150930	4400601	60890150	720	0	-0.3	0.4
20150924	4400606	11162640	446	0	-0.1	0.4
20150930	4400608	11093800	720	0	0.1	0.5
20150930	4400609	61613050	720	0	0.4	0.5
20150930	4400613	11475040	720	0	-0.1	0.3
20150930	4400614	61661340	689	0	-0.0	0.4
20150930	4400620	61667370	720	0	0.6	0.6
20150908	4400621	61519840	179	0	0.5	0.7
20150930	4400623	61669330	720	0	-0.3	0.5
20150930	4400624	11341110	710	0	-0.2	0.3
20150930	4400625	61668340	694	0	0.5	0.6
20150930	4400725	11027170	720	2	-0.0	0.6
20150930	4400739	61516840	720	0	0.4	0.5
20150930	4400740	11883820	720	0	-0.1	0.4
20150930	4400744	62953450	720	0	-0.0	0.4
20150930	4400745	62956440	552	2	0.8	1.5
20150930	4400746	62850730	720	0	-0.0	0.3
20150930	4400761	61669320	720	0	-0.3	0.6
20150930	4400762	61664310	720	0	0.4	0.5
20150930	4400763	61667330	617	0	0.0	0.5
20150930	4400764	61662330	720	0	-0.2	0.7

E-SURFMAR DB Monthly Report September 2015

20150930	4400768	62322360	720	0	0.1	0.5
20150930	4400769	62328360	720	0	0.1	0.5
20150930	4400770	11846540	720	0	-0.1	0.7
20150930	4400771	60554620	720	3	-0.2	0.7
20150930	4400774	61477400	718	0	0.0	0.3
20150930	4400775	61476400	720	0	0.2	0.6
20150930	4400776	61474410	720	0	0.4	0.3
20150930	4400778	61475430	719	0	0.1	0.3
20150930	4400835	60218770	720	0	-0.3	0.4
20150930	4400836	60218680	720	0	0.1	0.5
20150930	4400837	60209590	720	0	-0.0	0.3
20150930	4400839	60205090	720	0	-0.1	0.3
20150930	4400846	60441290	718	0	0.5	0.3
20150930	4400847	60442280	720	0	0.5	0.4
20150930	4400848	60448280	718	0	0.1	0.4
20150930	4400863	60211690	720	0	-0.4	0.4
20150930	4400866	11793240	720	0	-0.2	0.4
20150930	4400867	11593590	720	0	-0.1	0.4
20150930	4400868	11794230	720	0	0.1	0.5
20150930	4400869	61615050	720	0	0.7	1.1
20150930	4400871	11790240	720	0	0.2	0.4
20150930	4400872	60202920	720	0	-0.3	0.5
20150930	4400873	61612060	720	0	0.5	0.5
20150930	4400874	62858910	720	0	0.0	0.4
20150907	4400875	61616040	155	10	-0.4	3.0
20150930	4400877	60526170	720	0	-0.1	0.4
20150930	4400878	60528170	720	0	0.1	0.4
20150930	4400880	60556880	702	0	-0.3	0.5
20150930	4400885	60218780	720	0	-0.1	0.3
20150930	4400887	60251440	720	0	-0.1	0.3
20150930	4400888	60359010	720	0	-0.0	0.4
20150930	4400889	60202320	720	0	0.0	0.4
20150930	4400890	12000230	720	0	0.1	0.5
20150930	4400891	12007220	720	0	-0.1	0.4
20150930	4400892	60018400	720	0	0.1	0.4
20150930	6200513	61665360	720	0	-0.1	0.5
20150930	6200516	11475100	720	0	0.3	0.4
20150930	6200536	11599570	720	0	-0.3	0.5
20150930	6200539	60891140	720	0	0.0	0.5
20150930	6200552	11797240	720	0	0.2	0.4
20150930	6200553	11165650	720	0	-0.1	0.6
20150930	6200554	62952460	720	0	0.1	0.5
20150930	6200555	61515850	719	0	0.3	0.6
20150930	6200556	61510860	720	0	0.6	0.4
20150930	6200681	11168640	720	0	-0.0	0.3
20150930	6200695	60408990	720	0	0.2	0.3
20150930	6200713	11246980	718	0	-0.2	0.4
20150930	6200714	11240980	719	0	-0.2	0.4
20150930	6200940	60203850	720	0	-0.0	0.4
20150930	6200941	60207590	720	0	-0.0	0.3
20150930	6300640	60172710	720	0	0.2	0.4
20150930	6400517	61619060	701	0	0.5	0.7
20150930	6400518	60892150	714	0	-0.1	0.4
20150930	6400519	61518850	720	0	0.4	0.7
20150930	6400521	11470030	721	0	-0.1	0.6
20150930	6400522	61511870	598	0	0.2	0.8
20150930	6400523	61510870	718	0	0.3	0.6
20150930	6400524	61619040	718	0	-0.0	0.4
20150930	6400525	60175710	720	0	0.1	0.4
20150930	6400526	61611070	644	0	0.1	0.5
20150930	6400527	61514840	713	0	0.2	0.7
20150930	6400528	61471310	720	0	0.4	0.4
20150930	6400529	11027150	720	0	0.4	1.0
20150930	6400530	61470290	720	0	0.3	0.4
20150930	6400547	61473300	720	0	0.2	0.4
20150930	6400549	60898120	720	0	-0.1	0.6
20150930	6400550	11463700	720	0	-0.3	0.4
20150930	6400551	11795230	716	0	0.2	0.5
20150930	6400552	10822640	720	0	0.0	0.7
20150930	6400553	62954270	400	0	-0.1	0.4
20150930	6400554	62958280	400	0	0.3	0.6
20150930	6400606	61515870	720	0	0.9	0.5
20150905	6400613	60174710	98	0	0.2	0.4
20150930	6400615	60173700	720	0	0.5	0.6
20150929	6400620	60899130	586	5	-0.0	0.9
20150930	6400621	61614070	679	1	0.1	0.6

E-SURFMAR DB Monthly Report September 2015

20150930	6400622	60172810	720	1	0.2	0.5
20150930	6400623	11470040	720	0	-0.3	0.4
20150930	6400666	60179710	720	0	0.4	0.6
20150930	6400667	61615060	712	0	-0.1	0.6
20150930	6400668	60177860	720	0	0.2	0.4
20150930	6400692	60172720	720	0	0.4	0.5
20150930	6500511	62857900	375	0	0.1	0.3
20150930	6500512	62951440	352	0	0.3	0.3
20150930	6500513	62953460	352	0	0.6	0.3
20150930	6500514	62954450	720	0	0.2	0.4
20150930	6500515	62858710	612	0	0.5	0.4
20150930	6500516	62954440	720	0	0.2	0.3
20150930	6500517	62957440	720	0	0.1	0.3
20150930	6500518	62959430	568	5	-0.2	1.4
20150930	6500596	61511850	719	0	0.2	0.5
20150930	6500599	62326370	720	0	0.0	0.5
20150911	6500600	62326360	253	0	-0.3	0.4
20150930	6500601	62320360	718	0	-0.1	0.4
20150930	6500602	62323360	720	0	-0.4	0.5
20150930	6500603	62959440	401	0	0.2	0.5

Air Pressure (hPa), moored buoys, September 2015

Datend	WMO	Telcom	Recvd	GE	Bias	Std
20150930	1300130		704	0	0.3	0.6
20150930	1300131		708	0	0.5	0.6
20150930	6100001		718	1	0.4	0.5
20150930	6100002		717	0	0.0	0.5
20150927	6100197		637	0	-0.2	0.6
20150921	6100198		444	237	1.1	3.3
20150930	6100280		707	0	0.5	0.6
20150930	6100281		707	0	0.3	0.7
20150930	6100417		668	0	0.6	0.6
20150930	6100430		709	0	0.4	0.6
20150930	6101003		153	0	-0.1	0.8
20150916	6101008		110	0	0.7	1.2
20150930	6200001		720	0	0.2	0.5
20150930	6200024		709	0	0.4	0.6
20150919	6200025		220	0	0.3	0.6
20150930	6200027		237	0	-0.1	0.5
20150930	6200029		678	0	0.3	0.4
20150930	6200030		714	0	-0.1	0.4
20150930	6200081		720	1	0.2	0.5
20150930	6200082		709	0	0.4	0.7
20150930	6200083		713	0	0.4	0.6
20150930	6200084		706	0	0.6	0.6
20150930	6200085		706	0	0.4	0.6
20150930	6200086		681	0	-0.2	0.6
20150930	6200087		718	0	-0.2	0.4
20150930	6200091		563	0	-0.0	0.3
20150930	6200092		718	0	-0.3	1.7
20150930	6200093		718	0	0.4	0.4
20150930	6200094		717	0	0.0	0.4
20150930	6200095		720	1	0.1	0.5
20150930	6200105		680	0	0.0	0.3
20150930	6200163		720	0	0.1	0.4
20150930	6200191		677	0	0.1	0.4
20150930	6200192		685	0	0.4	0.4
20150930	6200303		614	2	0.1	0.4
20150930	6400045		719	0	0.1	0.4
20150930	6400046		458	0	0.2	0.4

Air Temperature (C), moored buoys, September 2015

Datend	WMO	Telcom	Recvd	GE	Bias	Std
20150930	1300130		700	0	-0.1	0.5
20150930	1300131		708	0	1.1	0.6
20150930	6100001		718	0	-0.7	0.8
20150930	6100002		719	0	-0.5	0.6
20150921	6100198		444	0	-0.4	1.2
20150930	6100280		707	0	-0.0	0.7

E-SURFMAR DB Monthly Report September 2015

20150930	6100281	707	0	0.0	0.8
20150930	6100417	668	0	-0.2	0.6
20150930	6100430	707	0	1.2	0.6
20150930	6101008	212	0	0.9	0.9
20150930	6200001	720	0	-0.2	0.5
20150930	6200024	709	0	0.5	0.7
20150919	6200025	215	0	-0.3	0.9
20150930	6200029	678	0	-0.0	0.4
20150930	6200030	714	0	-0.5	0.7
20150930	6200081	720	0	-0.2	0.4
20150930	6200082	709	0	0.1	0.5
20150930	6200083	713	0	-0.3	0.6
20150930	6200084	706	0	0.1	0.9
20150930	6200085	706	0	-0.0	0.9
20150930	6200086	684	0	-0.3	0.5
20150930	6200087	718	0	-0.3	0.6
20150930	6200091	563	0	0.0	0.4
20150930	6200092	718	0	0.1	0.7
20150930	6200093	718	0	-0.1	0.5
20150930	6200094	717	0	-0.0	0.4
20150930	6200095	717	0	-0.5	0.5
20150930	6200105	680	0	-0.2	0.5
20150930	6200163	719	0	-0.0	0.5
20150930	6200191	677	0	-0.1	0.8
20150930	6200192	685	0	0.0	0.5
20150930	6200303	501	1	-0.0	0.5
20150930	6400045	719	0	-0.3	0.4
20150930	6400046	371	0	-0.4	0.3
20150930	6600021	718	0	0.2	0.5
20150930	6600022	672	0	0.4	0.6
20150930	6600024	719	0	0.4	0.5

Wind direction (deg.), moored buoys, September 2015

Datend	WMO	Telcom	Recvd	GE	Bias	Std
20150930	1300130		702	19	19	22
20150930	1300131		699	77	6	28
20150930	6100001		717	32	-1	27
20150930	6100002		710	6	-2	16
20150927	6100197		627	16	-14	22
20150921	6100198		442	11	-4	20
20150930	6100280		692	36	1	33
20150930	6100281		669	48	8	36
20150930	6100417		662	24	-0	27
20150930	6100430		706	25	-5	29
20150930	6101003		153	11	-10	39
20150930	6101008		212	44	19	37
20150930	6200001		720	4	-3	17
20150930	6200024		699	44	7	28
20150919	6200025		207	12	14	32
20150930	6200027		201	3	3	29
20150930	6200029		677	2	4	15
20150930	6200081		718	1	-1	12
20150930	6200082		708	5	5	16
20150930	6200083		704	8	-8	16
20150930	6200084		686	20	2	26
20150930	6200085		685	30	-6	29
20150930	6200086		676	7	5	16
20150930	6200087		717	2	-2	16
20150930	6200091		562	2	-1	16
20150930	6200092		716	55	14	27
20150930	6200093		717	7	3	17
20150930	6200094		716	0	-4	15
20150930	6200095		696	10	-4	17
20150930	6200105		679	7	-2	14
20150930	6200163		720	5	0	16
20150930	6200191		673	7	-5	22
20150930	6200192		679	19	4	21
20150930	6200303		614	5	-3	18
20150930	6200442		718	2	6	14
20150930	6400046		457	1	4	17
20150930	6600021		718	2	-1	15
20150930	6600022		671	19	-0	18
20150930	6600024		717	0	3	15

E-SURFMAR DB Monthly Report September 2015

Wind speed rate, moored buoys, September 2015

Datend	WMO	Telcom	Recvd	GE	Rate	Err
20150930	1300130		702	0	1.0	1.4
20150930	1300131		699	0	1.1	2.2
20150930	6100001		717	0	1.3	2.2
20150930	6100002		710	1	1.1	1.5
20150927	6100197		627	1	1.1	1.1
20150921	6100198		442	1	0.9	2.0
20150930	6100280		692	0	1.3	1.6
20150930	6100281		669	0	1.6	1.7
20150930	6100417		662	0	1.0	1.4
20150930	6100430		706	0	1.3	1.4
20150930	6101003		153	0	1.0	2.4
20150930	6101008		212	0	0.6	3.4
20150930	6200001		720	0	1.0	1.3
20150930	6200024		699	0	1.3	1.6
20150919	6200025		207	0	0.8	2.0
20150930	6200027		201	0	1.1	1.3
20150930	6200029		677	0	1.0	1.2
20150930	6200081		718	0	1.0	1.1
20150930	6200082		708	0	0.9	1.2
20150930	6200083		704	0	0.8	1.7
20150930	6200084		686	0	1.0	1.7
20150930	6200085		685	0	0.9	1.3
20150930	6200086		675	1	1.1	1.2
20150930	6200087		717	0	1.0	1.5
20150930	6200091		562	0	1.0	1.3
20150930	6200092		716	0	0.9	2.7
20150930	6200093		717	0	1.0	1.5
20150930	6200094		716	0	1.0	1.2
20150930	6200095		696	0	1.1	1.4
20150930	6200105		679	0	1.0	1.3
20150930	6200163		720	0	1.1	1.3
20150930	6200191		673	0	1.0	1.6
20150930	6200192		679	0	1.2	1.6
20150930	6200303		614	0	1.1	1.4
20150930	6200442		718	0	1.0	1.1
20150930	6400046		457	0	1.0	1.5
20150930	6600021		718	0	1.2	1.0
20150930	6600022		671	0	1.2	1.1
20150930	6600024		717	0	1.1	1.0

Comments on QC statistics :

Air pressure

1. Metocean buoy WMO **1500681** reported pressure values with a systematic bias of about 1 hPa. A correction was applied on GTS data on the 1st of October.
2. Metocean buoy WMO **2500619, 4400745, 6400529 and 6500518** temporarily reported wrong pressure values during September for unknown reasons.
3. Metocean buoy WMO **2500652 and 4400875** reported wrong pressure values before their transmission was stopped.
4. Metocean buoy WMO **4100971** reported wrong pressure data before it ran ashore in Madeira I. on the 15th of september.
5. Metocean buoy WMO **4400869** reported pressure values with a systematic bias of about 3 hPa at the beginning of September. A correction was applied to GTS data on the 7th of September.
6. Spanish moored buoy WMO **6100198** (Cabo de Gata) reported wrong pressure values since 7th of Septembre before their transmission was stopped on the 21st of September.
7. Irish buoy WMO **6200092** reported wrong pressure values at the beginning of the month before it correctly worked from 5th September.

E-SURFMAR DB Monthly Report September 2015

8. Greek moored buoy WMO **6101008** reported wrong pressure data sometimes before it was stopped on 16th of September.

Wind

1. Greek moored buoy WMO **6101008** reported abnormal calm winds from the 16th of September.

Monthly QC statistics and other data quality control tools are available on line at :

<http://www.meteo.shom.fr/qctools/>

The working area of the E-SURFMAR website is open at <http://esurfmar.meteo.fr/wikisurf-wa/> . Ask the E-SURFMAR Programme Manager Pierre.Blouch@meteo.fr for the password in case you forgot it. Graphs of system performances June be displayed/downloaded at http://esurfmar.meteo.fr/doc/r/surfmar/others/e-surfmar_monitoring.pdf.