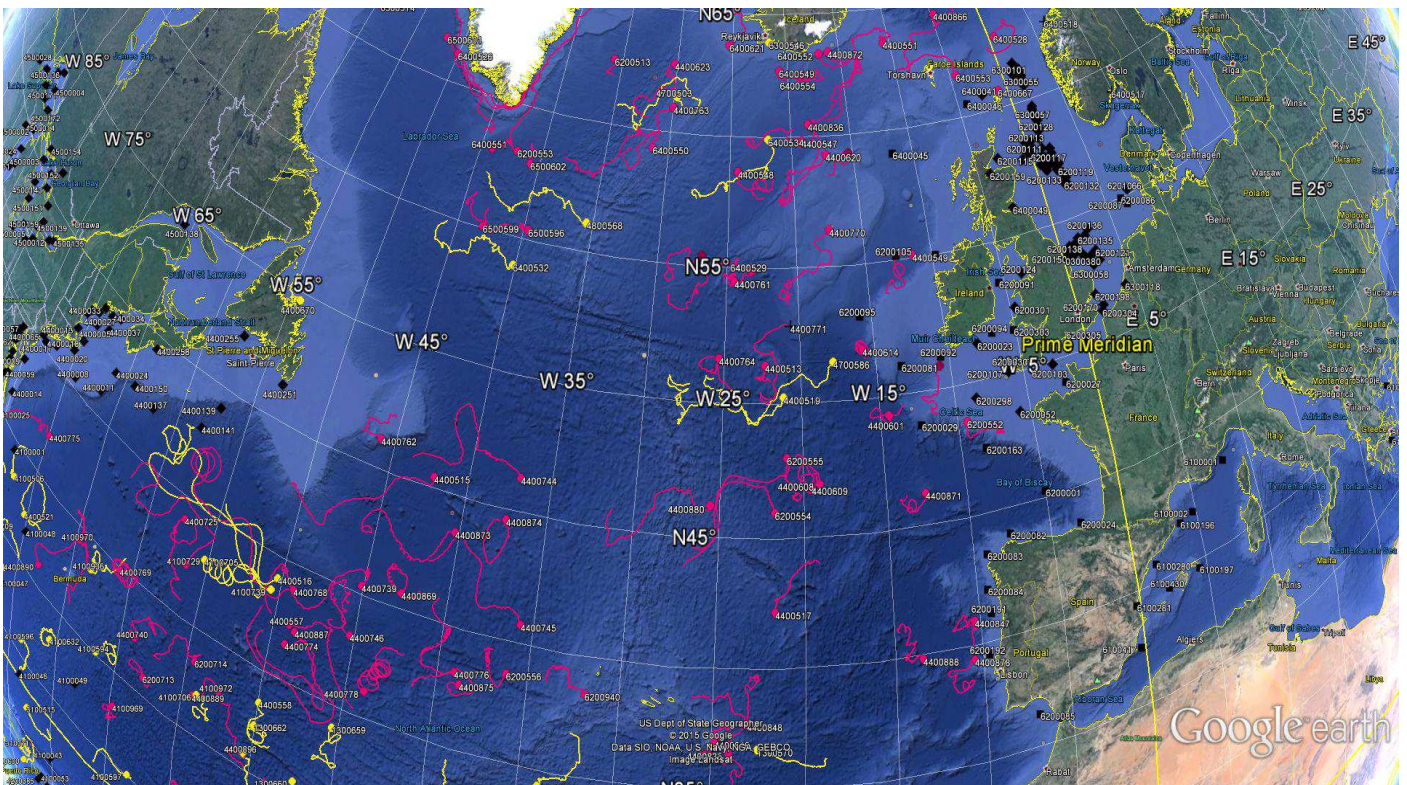


DATA BUOY MONTHLY REPORT

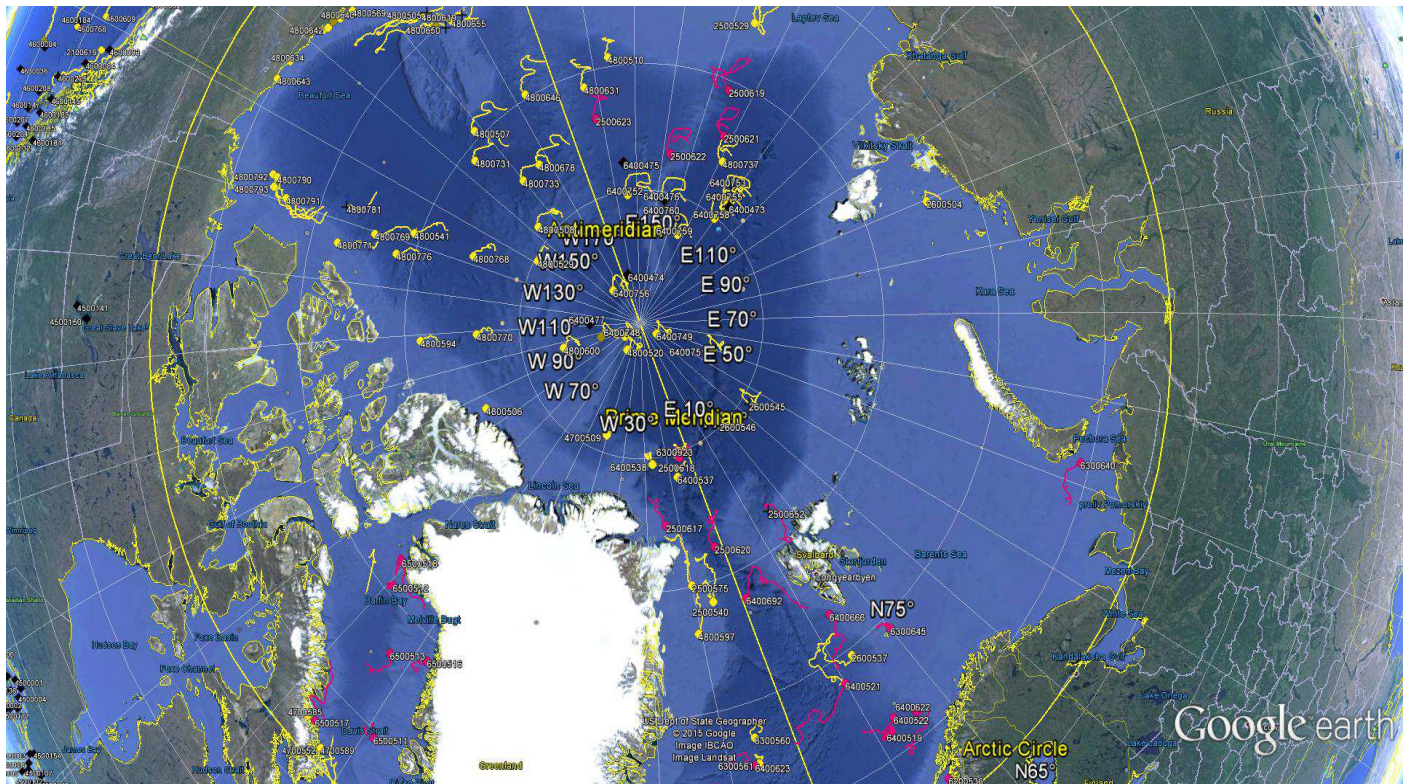
October 2015



*October 2015 : Operating data buoys in the North Atlantic
Drifting buoy trajectories : E-SURFMAR (red), others (yellow)
Moored buoy positions (black)*

*Most recent trajectories may be seen at:
http://www.meteo.shom.fr/cartographie/data/kml/MeteoFrance_buoys_map_15.kmz*

E-SURFMAR DB Monthly Report October 2015



October 2015
Drifting buoy trajectories in Arctic Ocean and adjacent seas : E-SURFMAR (red), others (yellow)

DRIFTING BUOYS

Network status

By the end of October, **138 Drifting buoys**, reporting air pressure onto the GTS, were in operation in the frame of E-SURFMAR. Out of these, 102 were E-SURFMAR funded Iridium SVP-Bs, including 7 in the Arctic, 7 in AtlantOS activities and 8 HRSST-2 buoys. The remaining buoys were: 36 drifters owned by NOAA and upgraded with barometers by E-SURFMAR.

Information about the availability of buoys for future deployments may be get from the E-SURFMAR wikisite (working area) at: http://esurfmar.meteo.fr/wikisurf-wa/index.php/Availability_of_drifting_buoys

Besides E-SURFMAR buoys, 71 drifting buoys were reporting at least air pressure observations from the EUMETNET area of interest. Out of these, only one was reporting Sea Surface Salinity.

Drifting buoys - New deployments

WMO	Telcom	Typ	Ow	Dep_Date	DepLat	DepLon	Comment
6300645	60892150	MSB	EU	20151023	74.5	20.1	Old WMO 6400518 re-deployed by fishermen

Operating drifting buoys in North Atlantic by the end of the month

WMO	Telcom	Typ	Ow	nobs	Wi	AT	AP	dP	ST	Wa	Ws	Dr	Sb	U	SS	O	Start_end	Lat	Lon	Age
1300868	11686410	MSB	EU	654	-	-	X	-	X	-	-	X	-	-	-	T	0110-3110	31.83	-14.32	345
1300869	11688410	MSB	EU	744	-	-	X	-	X	-	-	X	-	-	-	T	0110-3110	24.09	-40.07	343
1300870	61512860	MSB	EU	744	-	-	X	-	X	-	-	X	-	-	-	T	0110-3110	31.78	-16.61	233
1300871	61516870	MSB	EU	608	-	-	X	-	X	-	-	X	-	-	-	T	0110-3110	26.03	-33.14	231
1300872	61611050	MSB	EU	739	-	-	X	-	X	-	-	X	-	-	-	T	0110-3110	25.51	-26.93	232
2500617	61767070	MSB	EU	744	-	-	X	-	X	-	-	-	-	-	-	T	0110-3110	82.45	-14.06	406
2500618	11020180	MSB	EU	744	-	-	X	-	-	-	-	X	-	-	-	T	0110-3110	84.80	-4.09	194
2500619	62856890	MSB	EU	744	-	-	X	-	X	-	-	-	-	-	-	T	0110-3110	80.41	135.87	59
2500620	61760090	MSB	EU	744	-	-	X	-	X	-	-	-	-	-	-	T	0110-3110	81.20	-1.91	400
2500621	62956120	MSB	EU	744	-	-	X	-	X	-	-	-	-	-	-	T	0110-3110	82.15	132.28	58
2500622	62850900	MSB	EU	744	-	-	X	-	X	-	-	-	-	-	-	T	0110-3110	83.51	147.33	55
2500623	62955110	MSB	EU	744	-	-	X	-	X	-	-	-	-	-	-	T	0110-3110	81.98	171.82	48
4100729	62321360	MSB	EU	744	-	-	X	-	X	-	-	X	-	-	-	T	0110-3110	37.39	-56.33	158
4100730	62326350	MSB	EU	744	-	-	X	-	X	-	-	X	-	-	-	T	0110-3110	29.64	-78.35	157
4100731	62329360	MSB	EU	744	-	-	X	-	X	-	-	X	-	-	-	T	0110-3110	26.88	-54.02	163
4100969	60213780	PSB	UP	744	-	-	X	-	X	-	-	X	-	-	-	T	0110-3110	28.32	-59.66	815
4100970	60213790	PSB	UP	744	-	-	X	-	X	-	-	X	-	-	-	T	0110-3110	34.48	-64.62	814
4100972	60217780	PSB	UP	744	-	-	X	-	X	-	-	X	-	-	-	T	0110-3110	32.97	-52.49	814
4400513	61475450	DSB	UP	743	-	-	X	-	X	-	-	X	-	-	-	T	0110-3110	51.41	-22.34	237
4400515	61476450	DSB	UP	742	-	-	X	-	X	-	-	X	-	-	-	T	0110-3110	45.45	-42.11	239
4400517	61477390	DSB	UP	744	-	-	X	-	X	-	-	X	-	-	-	T	0110-3110	42.22	-21.71	236
4400546	11160640	MSB	EU	744	-	-	X	-	X	-	-	X	-	-	-	T	0110-3110	27.02	-47.56	956
4400547	60173710	MSB	EU	744	-	-	X	-	X	-	-	X	-	-	-	T	0110-3110	59.84	-19.15	447
4400548	11799230	MSB	E2	744	-	-	X	-	X	-	-	X	-	-	-	T	0110-3110	58.63	-24.36	447
4400549	60896130	MSB	EU	744	-	-	X	-	X	-	-	X	-	-	-	T	0110-3110	55.13	-11.51	420
4400551	60892140	MSB	EU	744	-	-	X	-	X	-	-	X	-	-	-	T	0110-3110	63.54	-10.63	420
4400557	61568540	DSB	UP	742	-	-	X	-	X	-	-	X	-	-	-	T	0110-3110	37.53	-48.91	109
4400601	60890150	MSB	EU	744	-	-	X	-	X	-	-	X	-	-	-	T	0110-3110	49.31	-14.47	419
4400608	11093800	MSB	E2	744	-	-	X	-	X	-	-	X	-	-	-	T	0110-3110	47.01	-19.05	387
4400609	61613050	MSB	EU	744	-	-	X	-	X	-	-	X	-	-	-	T	0110-3110	46.86	-19.54	269
4400613	11475040	MSB	EU	744	-	-	X	-	X	-	-	X	-	-	-	T	0110-3110	24.37	-32.80	970
4400614	61661340	MSB	EU	740	-	-	X	-	X	-	-	X	-	-	-	T	0110-3110	51.85	-15.84	550
4400620	61667370	MSB	EU	744	-	-	X	-	X	-	-	X	-	-	-	T	0110-3110	59.27	-17.26	549
4400623	61669330	MSB	EU	744	-	-	X	-	X	-	-	X	-	-	-	T	0110-3110	62.73	-30.23	268
4400624	11341110	YSB	EU	702	-	-	X	-	X	-	-	X	-	-	-	T	0110-3110	23.41	-31.60	1055
4400625	61668340	MSB	EU	657	-	-	X	-	X	-	-	X	-	-	-	T	0110-3110	65.85	-25.82	548
4400739	61516840	MSB	EU	744	-	-	X	-	X	-	-	X	-	-	-	T	0110-3110	40.37	-45.08	516

E-SURFMAR DB Monthly Report October 2015

4400740	11883820	PSB	UP	744	-	-	X	-	X	-	-	X	-	-	-	T	0110-3110	32.57	-58.78	1211
4400744	62953450	MSB	EU	744	-	-	X	-	X	-	-	X	-	-	-	T	0110-3110	46.29	-36.87	97
4400746	62850730	MSB	EU	744	-	-	X	-	X	-	-	X	-	-	-	T	0110-3110	38.23	-45.22	93
4400761	61669320	MSB	EU	744	-	-	X	-	X	-	-	X	-	-	-	T	0110-3110	54.49	-24.45	268
4400762	61664310	MSB	EU	744	-	-	X	-	X	-	-	X	-	-	-	T	0110-3110	46.14	-45.92	267
4400763	61667330	MSB	EU	618	-	-	X	-	X	-	-	X	-	-	-	T	0110-3110	60.98	-29.94	231
4400764	61662330	MSB	EU	744	-	-	X	-	X	-	-	X	-	-	-	T	0110-3110	51.63	-25.35	230
4400768	62322360	MSB	EU	744	-	-	X	-	X	-	-	X	-	-	-	T	0110-3110	39.00	-49.10	162
4400769	62328360	MSB	EU	744	-	-	X	-	X	-	-	X	-	-	-	T	0110-3110	34.94	-60.94	163
4400774	61477400	DSB	UP	742	-	-	X	-	X	-	-	X	-	-	-	T	0110-3110	36.64	-48.96	350
4400775	61476400	DSB	UP	744	-	-	X	-	X	-	-	X	-	-	-	T	0110-3110	37.14	-69.73	350
4400776	61474410	DSB	UP	744	-	-	X	-	X	-	-	X	-	-	-	T	0110-3110	38.26	-39.01	349
4400778	61475430	DSB	UP	741	-	-	X	-	X	-	-	X	-	-	-	T	0110-3110	36.20	-43.86	348
4400835	60218770	PSB	UP	690	-	-	X	-	X	-	-	X	-	-	-	T	0110-3110	36.62	-24.09	607
4400836	60218680	PSB	UP	695	-	-	X	-	X	-	-	X	-	-	-	T	0110-3110	60.48	-18.53	607
4400837	60209490	PSB	UP	695	-	-	X	-	X	-	-	X	-	-	-	T	0110-3110	26.00	-25.47	607
4400839	60205090	PSB	UP	697	-	-	X	-	X	-	-	X	-	-	-	T	0110-3110	33.88	-17.89	607
4400846	60441290	DSB	UP	691	-	-	X	-	X	-	-	X	-	-	-	T	0110-3110	37.07	-24.82	644
4400847	60442280	DSB	UP	687	-	-	X	-	X	-	-	X	-	-	-	T	0110-3110	40.99	-10.37	644
4400848	60448280	DSB	UP	692	-	-	X	-	X	-	-	X	-	-	-	T	0110-3110	37.82	-23.14	643
4400863	60211690	PSB	UP	744	-	-	X	-	X	-	-	X	-	-	-	T	0110-3110	27.99	-50.04	838
4400866	11793240	MSB	E2	744	-	-	X	-	X	-	-	X	-	-	-	T	0110-3110	64.38	-4.77	498
4400867	11593590	MSB	EU	744	-	-	X	-	X	-	-	X	-	-	-	T	0110-3110	55.42	-26.85	496
4400868	11794230	MSB	E2	744	-	-	X	-	X	-	-	X	-	-	-	T	0110-3110	28.35	-45.75	907
4400869	61615050	MSB	EU	744	-	-	X	-	X	-	-	X	-	-	-	T	0110-3110	40.68	-42.68	88
4400871	11790240	MSB	E2	744	-	-	X	-	X	-	-	X	-	-	-	T	0110-3110	46.24	-12.62	492
4400872	60202920	MSB	EU	744	-	-	X	-	X	-	-	X	-	-	-	T	0110-3110	63.37	-16.11	492
4400873	61612060	MSB	EU	744	-	-	X	-	X	-	-	X	-	-	-	T	0110-3110	43.64	-40.22	89
4400874	62858910	MSB	EU	744	-	-	X	-	X	-	-	X	-	-	-	T	0110-3110	44.63	-37.37	92
4400875	61616040	MSB	EU	744	-	-	X	-	X	-	-	X	-	-	-	T	0110-3110	37.80	-38.66	89
4400877	60526170	PSB	UP	695	-	-	X	-	X	-	-	X	-	-	-	T	0110-3110	28.33	-17.66	635
4400878	60528170	PSB	UP	684	-	-	X	-	X	-	-	X	-	-	-	T	0110-3110	39.44	-10.54	635
4400880	60656880	PSB	UP	685	-	-	X	-	X	-	-	X	-	-	-	T	0110-3110	46.23	-25.56	636
4400885	60218780	PSB	UP	692	-	-	X	-	X	-	-	X	-	-	-	T	0110-3110	33.54	-22.96	520
4400887	60251440	PSB	UP	702	-	-	X	-	X	-	-	X	-	-	-	T	0110-3110	37.34	-48.51	522
4400888	60359010	PSB	UP	695	-	-	X	-	X	-	-	X	-	-	-	T	0110-3110	39.88	-13.48	520
4400889	60202320	PSB	UP	697	-	-	X	-	X	-	-	X	-	-	-	T	0110-3110	32.00	-54.16	521
4400890	12000230	PSB	UP	700	-	-	X	-	X	-	-	X	-	-	-	T	0110-3110	31.20	-67.76	520
4400891	12007220	PSB	UP	694	-	-	X	-	X	-	-	X	-	-	-	T	0110-3110	28.35	-49.95	518
4400892	60018400	PSB	UP	699	-	-	X	-	X	-	-	X	-	-	-	T	0110-3110	50.87	-10.76	519
6200513	61665360	MSB	EU	744	-	-	X	-	X	-	-	X	-	-	-	T	0110-3110	62.59	-35.73	269
6200516	11475100	MSB	EU	744	-	-	X	-	X	-	-	X	-	-	-	T	0110-3110	23.40	-44.40	908
6200536	11599570	MSB	EU	744	-	-	X	-	S	-	-	X	-	-	-	T	0110-3110	67.74	14.62	510
6200539	60891140	MSB	EU	744	-	-	X	-	X	-	-	X	-	-	-	T	0110-3110	59.28	-15.42	422
6200552	11797240	MSB	E2	744	-	-	X	-	X	-	-	X	-	-	-	T	0110-3110	48.60	-9.44	387
6200553	11165650	MSB	EU	744	-	-	X	-	X	-	-	X	-	-	-	T	0110-3110	58.21	-41.99	952
6200554	62952460	MSB	EU	742	-	-	X	-	X	-	-	X	-	-	-	T	0110-3110	45.98	-21.74	90
6200555	61515850	MSB	EU	744	-	-	X	-	X	-	-	X	-	-	-	T	0110-3110	48.00	-21.00	91
6200556	61510860	MSB	EU	726	-	-	X	-	X	-	-	X	-	-	-	T	0110-3110	38.74	-36.15	90
6200681	11168640	MSB	EU	744	-	-	X	-	X	-	-	X	-	-	-	T	0110-3110	24.64	-32.04	1080
6200695	60408990	MSB	E2	744	-	-	X	-	X	-	-	X	-	-	-	T	0110-3110	26.52	-46.40	908
6200713	11246980	YSB	EU	731	-	-	X	-	X	-	-	X	-	-	-	T	0110-3110	31.07	-57.72	1054
6200714	11240980	YSB	EU	742	-	-	X	-	X	-	-	X	-	-	-	T	0110-3110	33.60	-54.37	1051
6200940	60203850	PSB	UP	693	-	-	X	-	X	-	-	X	-	-	-	T	0110-3110	38.54	-31.82	517
6200941	61516840	PSB	UP	701	-	-	X	-	X	-	-	X	-	-	-	T	0110-3110	33.63	-21.25	517
6300640	60172710	MSB	EU	744	-	-	X	-	X	-	-	X	-	-	-	T	0110-3110	70.47	52.45	809
6300645	60892150	MSB	EU	203	-	-	X	-	X	-	-	X	-	-	-	T	2310-3110	74.51	20.09	9
6400519	61518850	MSB	EU	744	-	-	X	-	X	-	-	X	-	-	-	T	0110-3110	71.08	11.27	287
6400521	11470030	MSB	EU	744	-	-	X	-	X	-	-	X	-	-	-	T	0110-3110	73.93	9.98	902
6400522	61511870	MSB	EU	690	-	-	X	-	X	-	-	X	-	-	-	T	0110-3110	71.52	13.19	435
6400523	61510870	MSB	EU	744	-	-	X	-	X	-	-	X	-	-	-	T	0110-3110	68.50	0.22	357
6400524	61619040	MSB	EU	744	-	-	X	-	X	-	-	X	-	-	-	T	0110-3110	66.90	13.42	357
6400525	60175710	MSB	EU	744	-	-	X	-	X	-	-	X	-	-	-	T	0110-3110	71.31	-12.40	806
6400526	61611070	MSB	EU	743	-	-	X	-	X	-	-	X	-	-	-	T	0110-3110	61.15	-49.94	355
6400527	61514840	MSB	EU	744	-	-	X	-	X	-	-	X	-	-	-	T	0110-3110	63.32	-52.08	354
6400528	61471310	DSB	UP	702	-	-	X	-	X	-	-	X	-	-	-	T	0110-3110	62.86	0.53	137
6400529	11027150	MSB	EU	744	-	-	X	-	X	-	-	X	-	-	-	T	0110-3110	54.89	-23.28	138
6400530	61470290	DSB	UP	700	-	-	X	-	X	-	-	X	-	-	-	T	0110-3110	68.59	-1.06	137
6400547	61473300	DSB	UP	687	-	-	X	-	X	-	-	X	-	-	-	T	0110-3110	65.50	-0.42	136
6400549	60898120	MSB	EU	744	-	-	X	-	X	-	-	X	-	-	-	T	0110-3110	62.65	-20.77	134
6400550	11463700	MSB	UP	744	-	-	X	-	X	-	-	X	-	-	-	T	0110-3110	59.32	-31.27	131
6400551	11795230	MSB	E2	743	-	-	X	-	X	-	-	X	-	-	-	T	0110-3110	58.05	-44.06	131
6400552	10822640	MSB	EU	744	-	-	X	-	X	-	-	X	-	-	-	T	0110-3110	63.32	-17.00	128
6400553	62954270	MSB	EU	744	-	-	X	-	X	-	-	X	-	-	-	T	0110-3110	61.70	-4.47	50
6400554	62958280	MSB	EU	744	-	-	X	-	X	-	-	X	-	-	-	T	0110-3110	62.44	-18.84	49
6400606	61515870	MSB	EU	627	-	-	X	-	X	-	-	X	-	-	-	T	0110-3110	68.62	5.87	283

E-SURFMAR DB Monthly Report October 2015

6400621	61614070	MSB	EU	744	-	-	X	-	X	-	-	X	-	-	-	T	0110-3110	63.67	-25.32	217
6400622	60172810	MSB	EU	744	-	-	X	-	X	-	-	X	-	-	-	T	0110-3110	71.15	15.98	807
6400623	11470040	MSB	EU	744	-	-	X	-	X	-	-	X	-	-	-	T	0110-3110	72.44	-6.42	903
6400666	60179710	MSB	EU	744	-	-	X	-	X	-	-	X	-	-	-	T	0110-3110	76.61	13.55	703
6400667	61615060	MSB	EU	741	-	-	X	-	-	-	-	X	-	-	-	T	0110-3110	60.70	-1.00	675
6400668	60177860	MSB	EU	744	-	-	X	-	X	-	-	X	-	-	-	T	0110-3110	71.62	-13.66	679
6400692	60172720	MSB	EU	743	-	-	X	-	X	-	-	X	-	-	-	T	0110-3110	78.91	0.93	618
6500511	62857900	MSB	EU	744	-	-	X	-	X	-	-	X	-	-	-	T	0110-3110	69.66	-58.73	48
6500512	62951440	MSB	EU	744	-	-	X	-	X	-	-	X	-	-	-	T	0110-3110	75.38	-69.20	46
6500513	62953460	MSB	EU	741	-	-	X	-	X	-	-	X	-	-	-	T	0110-3110	73.20	-63.07	47
6500514	62954450	MSB	EU	744	-	-	X	-	X	-	-	X	-	-	-	T	0110-3110	61.65	-59.45	100
6500516	62954440	MSB	EU	744	-	-	X	-	X	-	-	X	-	-	-	T	0110-3110	74.07	-57.93	67
6500517	62957440	MSB	EU	744	-	-	X	-	X	-	-	X	-	-	-	T	0110-3110	68.19	-65.65	66
6500596	61511850	MSB	EU	734	-	-	X	-	X	-	-	X	-	-	-	T	0110-3110	55.37	-39.59	500
6500599	62326370	MSB	EU	744	-	-	X	-	X	-	-	X	-	-	-	T	0110-3110	55.06	-42.98	175
6500601	62320360	MSB	EU	744	-	-	X	-	X	-	-	X	-	-	-	T	0110-3110	61.62	-51.59	172
6500602	62323360	MSB	EU	744	-	-	X	-	X	-	-	X	-	-	-	T	0110-3110	57.85	-40.70	172
6500603	62959440	MSB	EU	744	-	-	X	-	X	-	-	X	-	-	-	T	0110-3110	67.39	-55.37	49

----- Operating AtlantOS drifting buoys by the end of the month

WMO	Telcom	Typ	Ow	nobs	Wi	AT	AP	dP	ST	Wa	Ws	Dr	Sb	U	SS	O	Start_end	Lat	Lon	Age
1500681	61661310	MSB	EU	744	-	-	X	-	X	-	-	X	-	-	-	T	0110-3110	-13.48	-10.51	197
1500682	61663300	MSB	EU	744	-	-	X	-	X	-	-	X	-	-	-	T	0110-3110	-10.48	-3.49	198
1500683	61663370	MSB	EU	744	-	-	X	-	X	-	-	X	-	-	-	T	0110-3110	-8.45	-32.27	199
1500684	62328350	MSB	EU	744	-	-	X	-	X	-	-	X	-	-	-	T	0110-3110	-4.51	-23.75	198
1500685	62854900	MSB	EU	744	-	-	X	-	X	-	-	X	-	-	-	T	0110-3110	-7.39	-8.00	65
1500686	62959110	MSB	EU	744	-	-	X	-	X	-	-	X	-	-	-	T	0110-3110	-5.44	-15.08	65
1500688	62958430	MSB	EU	665	-	-	X	-	X	-	-	X	-	-	-	T	0110-3110	-9.55	-1.48	65

----- Drifting buoys which ceased to be operational

WMO	Telcom	Typ	Ow	End_Date	Lat	Lon	Age	Cause
4400771	60554620	PSG	UP	20151022	52.9	-20.6	113	Unknown
6400517	61619060	MSB	EU	20151006	59.0	9.8	330	Ashore in Norway
6400518	60892150	MSB	EU	20151002	62.8	6.4	324	Ashore in Norway

----- Non-operating drifting buoys reporting GTS data

WMO	Telcom	Typ	Ow	nobs	Wi	AT	AP	dP	ST	Wa	Ws	Dr	Sb	U	SS	O	Start_end	Lat	Lon	Age
2500624	60247420	MSB	EU	744	-	-	-	-	X	-	-	-	-	-	-	T	0110-3110	68.42	-10.64	792
4400604	11794240	MSB	E2	744	-	-	-	-	X	-	-	X	-	-	-	T	0110-3110	45.55	-34.27	389
4400725	11027170	MSB	EU	744	-	-	S	-	X	-	-	X	-	-	-	T	0110-3110	39.14	-57.23	1226
4400745	62956440	MSB	EU	744	-	-	S	-	X	-	-	X	-	-	-	T	0110-3110	40.78	-35.69	94
4400770	11846540	MSB	E2	744	-	-	S	-	X	-	-	X	-	-	-	T	0110-3110	56.39	-17.50	122
6400615	60173700	MSB	EU	744	-	-	S	-	X	-	-	X	-	-	-	T	0110-3110	69.76	-18.25	722
6500518	62959430	MSB	EU	724	-	-	S	-	X	-	-	X	-	-	-	T	0110-3110	76.22	-69.96	37
6500595	11595570	MSB	EU	744	-	-	-	-	X	-	-	X	-	-	-	T	0110-3110	51.54	-30.60	502

----- Non-operating drifting buoys which ceased to emit

WMO	Telcom	Typ	Ow	End_Date	Lat	Lon	Age	Cause
2500652	60176700	MSB	EU	20151020	81.3	14.9	769	Faded (Battery empty)

E-SURFMAR DB Monthly Report October 2015

Other operating drifting buoys inside the EUMETNET area by the end of the month

WMO	Telcom	Owner	nobs	Wi	AT	AP	dP	ST	Wa	Ws	Dr	Sb	U	SS	O	Start_end	Lat	Lon
1300515	114951	AOML	710	-	-	X	-	X	-	-	X	-	-	-	L	0110-3110	26.55	-52.42
1300517	114943	AOML	700	-	-	X	-	X	-	-	X	-	-	-	L	0110-3110	14.84	-46.84
1300519	127004	AOML	706	-	-	X	X	X	-	-	X	-	-	-	L	0110-3110	20.95	-41.12
1300525	127003	AOML	735	-	-	X	X	X	-	-	X	-	-	-	L	0110-3110	7.21	-13.71
1300530	114916	AOML	703	-	-	X	-	X	-	-	X	-	-	-	L	0110-3110	9.54	-17.89
1300531	114921	AOML	706	-	-	X	-	X	-	-	X	-	-	-	L	0110-3110	13.71	-65.63
1300569	114880	AOML	703	-	-	X	-	X	-	-	X	-	-	-	L	0110-3110	26.48	-33.38
1300570	116474	AOML	732	-	-	X	-	X	-	-	X	-	-	-	L	0110-3110	36.78	-22.59
1300572	127002	AOML	736	-	-	X	X	X	-	-	X	-	-	-	L	0110-3110	31.12	-33.29
1300633	109491	AOML	732	-	-	X	X	X	-	-	X	-	-	-	L	0110-3110	31.47	-24.64
1300659	11910180	UKMO	744	-	-	X	-	X	-	-	X	-	-	-	T	0110-3110	34.08	-45.37
1300660	11022040	UKMO	744	-	-	X	-	X	-	-	X	-	-	-	T	0110-3110	30.79	-47.21
1300661	62325770	UKMO	744	-	-	X	-	-	-	-	X	-	-	-	T	0110-3110	13.34	-28.66
1300662	11098800	UKMO	744	-	-	X	-	X	-	-	X	-	-	-	T	0110-3110	32.42	-49.98
1300665	11091810	UKMO	134	-	-	X	-	X	-	-	X	-	-	-	T	2610-3110	21.71	-18.08
1500951	10450430	CMM	647	-	-	X	-	X	-	-	X	-	-	-	T	0110-3110	3.49	6.28
2100942	119223	UKMO	736	-	-	X	X	X	-	-	X	-	-	-	L	0110-3110	28.38	-41.66
2500540		APL	741	-	-	X	X	X	-	-	-	-	-	-	L	0110-3110	79.24	-6.06
2500575			742	-	-	X	X	S	-	-	-	-	-	-	L	0110-3110	80.05	-9.90
2600537	61369210	PSC	741	-	-	X	X	X	-	-	X	-	-	-	O	0110-3110	74.73	12.99
2600545			245	-	-	X	X	X	-	-	S	-	-	-	O	0110-3010	84.67	34.04
2600546			744	-	-	X	X	X	-	-	S	-	-	-	O	0110-3110	85.06	18.96
3100515	114946	AOML	713	-	-	X	-	X	-	-	X	-	-	-	L	0110-3110	22.35	-67.50
3100717	61614160	CMM	744	-	-	X	-	X	-	-	X	-	-	-	T	0110-3110	18.65	-68.36
3100720	62652340	CMM	1169	-	-	X	-	X	-	-	X	-	-	X	T	0110-3110	4.55	8.00
3100863	61611040	CMM	744	-	-	X	-	X	-	-	X	-	-	-	T	0110-3110	23.03	-57.02
4100564	109221	AOML	688	-	-	X	-	X	-	-	X	-	-	-	L	0110-3110	27.82	-32.41
4100591	132678	AOML	709	-	-	X	X	X	-	-	X	-	-	-	L	0110-3110	16.96	-60.65
4100594	127029	AOML	734	-	-	X	X	X	-	-	X	-	-	-	L	0110-3110	30.22	-61.53
4100596	11473050	CMM	744	-	-	X	-	X	-	-	X	-	-	-	T	0110-3110	26.19	-68.39
4100597	61512840	AOML	744	-	-	X	-	X	-	-	X	-	-	-	T	0110-3110	25.27	-58.08
4100600	61618040	AOML	744	-	-	X	-	X	-	-	X	-	-	-	T	0110-3110	17.70	-68.27
4100632	11474050	CMM	744	-	-	X	-	X	-	-	X	-	-	-	T	0110-3110	28.26	-65.61
4100635	61475300	CMM	692	-	-	X	-	X	-	-	X	-	-	-	T	0110-3110	22.49	-44.20
4100637	62859910	CMM	359	-	-	X	-	X	-	-	X	-	-	-	T	0110-3110	17.15	-49.02
4100638	62955440	CMM	744	-	-	X	-	X	-	-	X	-	-	-	T	0110-3110	13.93	-50.23
4100705	11596570	AOML	744	-	-	X	-	X	-	-	X	-	-	-	T	0110-3110	38.10	-55.17
4100706	11595580	AOML	744	-	-	X	-	X	-	-	X	-	-	-	T	0110-3110	32.15	-53.89
4100707	62957110	CMM	744	-	-	X	-	X	-	-	X	-	-	-	T	0110-3110	13.31	-59.36
4100708	62958100	CMM	744	-	-	X	-	X	-	-	X	-	-	-	T	0110-3110	10.38	-35.75
4100711	11477030	CMM	744	-	-	X	-	X	-	-	X	-	-	-	T	0110-3110	31.32	-37.70
4100739	11912120	UKMO	744	-	-	X	-	X	-	-	X	-	-	-	T	0110-3110	38.55	-50.49
4100933	101721	AOML	462	-	-	X	X	X	-	-	X	-	-	-	L	0110-3110	34.38	-33.91
4100936	109488	AOML	735	-	-	X	X	X	-	-	X	-	-	-	L	0110-3110	33.75	-63.17
4100975	109439	AOML	732	-	-	X	X	X	-	-	X	-	-	-	L	0110-3110	30.61	-23.61
4400516	114599	AOML	707	-	-	X	X	X	-	-	X	-	-	-	L	0110-3110	39.13	-50.23
4400519	70840	AOML	736	-	-	X	X	X	-	-	X	-	-	-	L	0110-3110	50.23	-21.16
4400521	133133	AOML	542	-	-	X	X	X	-	-	X	-	-	-	L	0110-3110	32.56	-70.00
4400558	123286	AOML	740	-	-	X	X	X	-	-	X	-	-	-	L	0110-3110	33.57	-49.88
4400670		EC	744	-	-	X	X	X	-	-	X	-	-	-	O	0110-3110	49.72	-54.27
4400896	109438	AOML	733	-	-	X	X	X	-	-	X	-	-	-	L	0110-3110	30.87	-50.38
4700503		APL	741	-	-	X	X	X	-	-	-	-	-	-	L	0110-3110	61.42	-29.75
4700509		APL	744	-	-	X	X	X	-	-	S	-	-	-	O	0110-3110	85.66	-40.30
4700551		EC	248	-	-	X	X	X	-	-	-	-	-	-	O	2110-3110	65.62	-59.52
4700552		EC	224	-	-	X	X	X	-	-	-	-	-	-	O	2210-3110	67.40	-63.30
4700585	11541430	EC	725	-	-	X	X	X	-	-	X	-	-	-	O	0110-3110	68.08	-66.68
4700586	11541440	EC	737	-	-	X	X	X	-	-	X	-	-	-	O	0110-3110	51.47	-17.86
4700589		EC	224	-	-	X	X	X	-	-	-	-	-	-	O	2210-3110	67.39	-63.31
4700590	60544160	EC	252	-	-	X	X	X	-	-	-	-	-	-	O	2110-3110	65.71	-59.97
4800520			736	-	-	X	X	-	X	-	X	-	-	-	L	0110-3110	88.88	-49.47
4800568	61363210	PSC	738	-	-	X	X	X	-	-	X	-	-	-	O	0110-3110	56.10	-35.46
4800597	100009	PSC	720	-	-	X	X	-	-	-	-	-	-	-	O	0110-3110	78.18	-10.53
6300546	61361200	PSC	741	-	-	X	X	X	-	-	X	-	-	-	O	0110-3110	63.83	-21.59
6300560	60654120		735	-	-	X	-	X	-	-	X	-	-	-	L	0110-3110	73.57	-5.41
6300561	60654200		735	-	-	X	-	X	-	-	X	-	-	-	L	0110-3110	72.48	-5.79
6300923		EC	742	-	-	X	X	X	-	-	S	-	-	-	O	0110-3110	84.88	-4.71
6400532			741	-	-	X	X	X	-	-	-	-	-	-	L	0110-3110	53.96	-40.10
6400534			711	-	-	X	X	X	-	-	-	-	-	-	L	0110-3110	59.91	-21.92
6400537		EC	248	-	-	X	X	X	-	-	-	-	X	-	O	0110-3110	84.13	-6.98
6400748			510	-	-	X	X	X	X	-	-	S	-	-	O	0110-3110	89.28	-69.75
6400749			10	-	-	X	X	X	X	-	-	-	-	-	O	3110-3110	89.22	37.27

Abbreviations

WMO : WMO id.
Telcom : Telcom id.
Typ : Buoy type
 - first character : Manufacturer (D = DBI , M = Metocean, P = Pacific Gyre
 T = Technocean, Y = Marlin-Yug...)
 - second character : Main type (F = FGGE, I = ICEB, S = SVP)
 - third character : Sub type (B = barometer buoy, W = Wind buoy,
 S = Salinity buoy)
Ow : Buoy owner (country code or EU for EUCOS, E2 for HRSST-2 buoys, UP for upgraded
 buoys)
Owner : Buoy owner for non EUCOS buoys
Nobs : number of GTS reports received at Meteo-France
Parameters (X = OK, S = stopped, - = not measured) :
 Wi : Wind
 AT : Air Temperature
 AP : Air Pressure
 dP : Air pressure tendency
 ST : Sea surface Temperature
 Wa : Wave period and height
 Ws : Wave spectra
 Dr : Drogue presence
 Sb : Subsurface temperature
 U : Relative humidity
 SS : Sea surface Salinity
O : Origin of the reports (T = CLS Toulouse, L = CLS America, O = Other)
Start_end : first and last dates of the month for which GTS data were received at Meteo-France
Lat : Latitude of the latest position
Lon : Longitude of the latest position
Age : Age of the buoy (days)
DepDate : Date of deployment
DepLat : Latitude of deployment
Dep Lon : Longitude of Deployment
From : Harbour of departure

Definition : An operating drifting buoy is a buoy providing at least air pressure or wind
(direction and velocity) data.

MOORED BUOYS

Former EGOS stations (K-pattern and Hydrosphere)

WMO	Name	nobs	Wi	AT	AP	dP	ST	Wa	Ws	Dr	Sb	U	SS	O	Start_end	Lat	Lon
6100001	Cote d'Azur	743	X	X	X	X	X	X	X	-	-	X	-	T	0110-3110	43.40	7.80
6100002	Lion	743	X	X	X	X	X	X	X	-	-	X	-	T	0110-3110	42.10	4.70
6200001	Gascogne	744	X	X	X	X	X	X	-	-	-	X	-	O	0110-3110	45.30	-5.00
6200029	K1	740	X	X	X	X	X	X	-	-	-	X	-	O	0110-3110	48.70	-12.50
6200081	K2	695	X	X	X	X	X	X	-	-	-	X	-	O	0110-3110	51.00	-13.20
6200090	M1	-	-	-	-	-	-	-	-	-	-	-	-	-	-	53.10	-11.20
6200091	M2	742	X	X	X	-	X	X	-	-	-	X	-	O	0110-3110	53.50	-5.40
6200092	M3	743	X	X	X	-	-	X	-	-	-	-	-	O	0110-3110	51.20	-10.50
6200093	M4	743	X	X	X	-	X	-	-	-	-	-	-	O	0110-3110	54.70	-9.10
6200094	M5	742	X	X	X	-	-	X	-	-	-	-	-	O	0110-3110	51.70	-6.70
6200095	M6	772	X	X	X	X	X	X	-	-	-	X	-	O	0110-3110	53.10	-15.90
6200105	K4	735	X	X	X	X	X	X	-	-	-	X	-	O	0110-3110	55.80	-11.40
6200108	K3	-	-	-	-	-	-	-	-	-	-	-	-	-	-	53.50	-19.50
6200163	Brittany	743	X	X	X	X	X	X	-	-	-	X	-	O	0110-3110	47.50	-8.40
6400045	K5	744	-	X	X	X	X	X	-	-	-	X	-	O	0110-3110	59.10	-11.70
6400046	K7	737	X	X	X	-	X	X	-	-	-	X	-	O	0110-3110	60.70	-5.20

Comments:

- EUMETNET moored buoys are presented in bold characters.

Former EGOS moored buoys (Spanish SeaWatch and WaveScan)

WMO	Name	nobs	Wi	AT	AP	dP	ST	Wa	Ws	Dr	Sb	U	SS	O	Start_end	Lat	Lon
1300130	Gran Canaria	653	X	X	X	-	X	X	X	-	-	-	X	O	0110-2810	28.18	-15.82
1300131	Tenerife Sur	725	X	X	X	-	X	X	X	-	-	-	X	O	0110-3110	28.00	-16.58
6100196	C. Begur	444	X	X	X	-	-	X	X	-	-	-	-	O	1310-3110	41.92	3.65
6100197	Mahon	447	X	X	X	-	-	X	X	-	-	-	-	O	1310-3110	39.72	4.42
6100198	C. de Gata	-	-	-	-	-	-	-	-	-	-	-	-	-	-	36.57	-2.33
6100280	Tarragona	731	X	X	X	-	X	X	X	-	-	-	X	O	0110-3110	40.77	1.47
6100281	Valencia	731	X	X	X	-	X	X	X	-	-	-	X	O	0110-3110	39.47	-0.27
6100417	C. de Palos	726	X	X	X	-	X	X	X	-	-	-	X	O	0110-3110	37.65	-0.32
6100430	Dragonera	732	X	X	X	-	-	X	X	-	-	-	-	O	0110-3110	39.56	2.11
6200024	Bilbao-Visc.	728	X	X	X	-	X	X	X	-	-	-	X	O	0110-3110	43.63	-3.03
6200025	C. de Penas	375	X	X	X	-	X	X	X	-	-	-	X	O	0510-2810	43.73	-6.17
6200082	E. de Bares	728	X	X	X	-	X	X	X	-	-	-	X	O	0110-3110	44.13	-7.69
6200083	Villano-Sis.	732	X	X	X	-	X	X	X	-	-	-	X	O	0110-3110	43.48	-9.22
6200084	C. Silleiro	731	X	X	X	-	X	X	X	-	-	-	X	O	0110-3110	42.12	-9.43
6200085	G. de Cadiz	723	X	X	X	-	X	X	X	-	-	-	X	O	0110-3110	36.48	-6.97
6201030	Santander	-	-	-	-	-	-	-	-	-	-	-	-	-	-	43.84	-3.77

Comments:

- The EUMETNET buoy is presented in bold characters.

Operating POSEIDON moored buoys (Greece)

WMO	Name	nobs	Wi	AT	AP	dP	ST	Wa	Ws	Dr	Sb	U	SS	O	Start_end	Lat	Lon
6101000		-	-	-	-	-	-	-	-	-	-	-	-	-	-	39.10	24.50
6101001		19	X	X	X	-	-	X	-	-	-	-	-	O	2910-3110	37.60	23.60
6101002		-	-	-	-	-	-	-	-	-	-	-	-	-	-	37.00	22.10
6101003		223	X	-	X	-	-	X	-	-	-	-	-	O	0110-3110	40.00	24.70
6101004		-	-	-	-	-	-	-	-	-	-	-	-	-	-	39.10	25.80
6101005		-	-	-	-	-	-	-	-	-	-	-	-	-	-	37.50	25.50
6101006		-	-	-	-	-	-	-	-	-	-	-	-	-	-	36.30	25.50
6101007		-	-	-	-	-	-	-	-	-	-	-	-	-	-	35.80	24.90
6101008		208	X	X	-	-	-	X	-	-	-	-	-	O	0110-3110	36.80	21.60
6101009		-	-	-	-	-	-	-	-	-	-	-	-	-	-	38.00	20.60

**E-SURFMAR DB Monthly Report
October 2015**

Other European moored buoys (operated by 3rd parties)

WMO	Name	nobs	Wi	AT	AP	dP	ST	Wa	Ws	Dr	Sb	U	SS	O	Start_end	Lat	Lon
1200050	Cycofos		-	-	-	-	-	-	-	-	-	-	-			33.60	31.90
6100010	Italia-1		-	-	-	-	-	-	-	-	-	-	-			43.80	9.10
6200027	Jersey	248	X	-	X	X	-	X	-	-	-	-	-	O	0110-3110	49.08	-22.20
6200030	L4	736	-	X	X	-	-	-	-	-	-	X	-	O	0110-3110	50.25	-4.22
6200050	E1		-	-	-	-	-	-	-	-	-	-	-			50.04	-4.37
6200086	NSB II	722	X	X	X	X	X	-	-	-	-	X	-	O	0110-3110	55.00	6.40
6200087	NSB III	744	X	X	X	X	X	-	-	-	-	X	-	O	0110-3110	54.70	6.80
6200191	Porto	36	S	S	S	-	-	S	-	-	-	-	-		0110-0210	41.15	-9.57
6200192	Peniche	64	S	S	S	-	-	S	-	-	-	-	-		0110-0310	39.50	-9.65
6200303	Turbo Bank	152	X	S	X	X	X	X	-	-	-	S	-	O	0110-2810	51.60	-5.10
6200442	PAP	752	X	-	-	-	-	-	-	-	-	-	-	O	0110-3110	49.00	-16.40
6600021	Arkona Becken	742	X	X	-	-	X	X	-	-	-	-	-	O	0110-3110	54.90	13.90
6600022	Oder Bank	707	X	X	-	-	X	-	-	-	-	-	-	O	0110-3110	54.10	14.20
6600024	Darsser Schwelle	514	S	S	-	-	S	S	-	-	-	-	-		0110-2210	54.70	12.70

Other offshore moored buoys inside the EUMETNET area

WMO	Name	nobs	Wi	AT	AP	dP	ST	Wa	Ws	Dr	Sb	U	SS	O	Start_end	Lat	Lon
1300001		418	X	X	X	-	X	-	-	-	-	X	X	L	0110-3110	11.47	-23.00
1300008		345	X	X	X	-	X	-	-	-	-	X	-	L	0110-3110	14.98	-38.02
1300308	East Atlantic		-	-	-	-	-	-	-	-	-	-	-			15.00	-38.00
4100026		309	X	X	-	-	-	-	-	-	-	X	-	L	0110-3110	11.49	-38.40
4100040	West Atlantic	767	X	X	X	X	X	X	-	-	-	X	-	O	0110-3110	14.50	-53.00
4100041	Mid. Atlantic	773	X	X	X	X	X	X	-	-	-	X	-	O	0110-3110	14.50	-46.00
4100043	Porto Rico	774	X	X	X	X	X	X	-	-	-	X	-	O	0110-3110	21.00	-65.00
4100044		773	X	X	X	X	X	X	-	-	-	X	-	O	0110-3110	21.70	-58.70
4100046		771	X	X	X	X	X	X	-	-	-	X	-	O	0110-3110	23.90	-70.90
4100047			-	-	-	-	-	-	-	-	-	-	-			27.50	-71.50
4100048		774	X	X	X	X	X	X	-	-	-	X	-	O	0110-3110	32.00	-69.60
4100049		773	X	X	X	X	X	X	-	-	-	X	-	O	0110-3110	27.50	-53.00
4100139		426	X	X	X	-	X	-	-	-	-	X	-	L	0110-3110	20.02	-37.86
4100300	Antilles	719	X	X	X	X	X	X	-	-	-	X	-	T	0110-3110	15.85	-57.47
4200059	Caraibes	773	X	X	X	X	X	X	-	-	-	X	-	O	0110-3110	15.00	-67.50
4400008	A Nantucket	774	X	X	X	X	X	X	-	-	-	X	-	O	0110-3110	40.50	-69.40
4400011	D Georges Bk	775	X	X	X	X	X	X	-	-	-	X	-	O	0110-3110	41.10	-66.60
4400018	SE Cape Cod	774	X	X	X	X	X	X	-	-	-	X	-	O	0110-3110	41.30	-69.30
4400024	NNE Channel	678	X	X	X	-	X	X	-	-	-	-	-	O	0110-3110	42.30	-65.90
4400137	E Scotia Sl.	737	X	X	X	X	X	X	-	-	-	-	-	O	0110-3110	42.30	-62.00
4400138	SW Gd Banks		-	-	-	-	-	-	-	-	-	-	-			44.30	-53.60
4400139	Beanquereau	737	X	X	X	X	X	X	-	-	-	-	-	O	0110-3110	44.30	-57.10
4400140	Tail of Bk		-	-	-	-	-	-	-	-	-	-	-			43.80	-51.70
4400141	Larentian F	736	X	X	X	X	X	X	-	-	-	-	-	O	0110-3110	43.00	-58.00
4400150	La Have Bk	723	X	S	X	X	X	X	-	-	-	-	-	O	0110-3110	42.50	-64.00

E-SURFMAR DB Monthly Report October 2015

Buoy-QC statistics from Meteo-France model outputs

Datend : Date of the last value received on GTS
Recvd : Total number of values received on GTS
GE : Number of Gross Errors (excluded from bias and sd computations)
bias : Mean differences between observation values and co-located model output values
Std : Standard deviation of differences

Air Pressure (hPa), drifting buoys, October 2015

Datend	WMO	Telcom	Recvd	GE	Bias	Std
20151031	1300868	11686410	654	0	0.2	0.6
20151031	1300869	11688410	744	0	0.1	0.3
20151031	1300870	61512860	744	0	0.6	0.6
20151031	1300871	61516870	608	0	0.6	0.3
20151031	1300872	61611050	739	0	0.6	0.4
20151031	1500681	61661310	744	0	0.6	0.8
20151031	1500682	61663300	744	0	0.6	1.0
20151031	1500683	61663370	744	0	0.9	0.4
20151031	1500684	62328350	744	0	-0.2	0.5
20151031	1500685	62854900	744	0	0.1	0.9
20151031	1500686	62959110	744	0	-0.1	0.7
20151031	1500688	62958430	665	0	0.3	1.0
20151031	2500617	61767070	744	0	-0.3	0.6
20151031	2500618	11020180	744	0	0.3	0.5
20151031	2500619	62856890	636	15	0.3	1.3
20151031	2500620	61760090	744	0	0.0	0.5
20151031	2500621	62956120	744	0	0.1	0.3
20151031	2500622	62850900	744	0	-0.0	0.4
20151031	2500623	62955110	744	0	0.3	0.4
20151020	2500652	60176700	170	0	-0.2	0.6
20151031	4100637	62859910	359	0	0.3	0.6
20151031	4100638	62955440	511	0	0.1	0.6
20151031	4100707	62957110	744	0	-0.2	0.8
20151031	4100708	62958100	744	0	0.0	0.4
20151031	4100729	62321360	744	0	0.0	0.6
20151031	4100730	62326350	744	0	0.3	0.8
20151031	4100731	62329360	744	0	0.2	0.5
20151031	4100969	60213780	743	0	-0.5	0.6
20151031	4100970	60213790	744	0	0.3	0.6
20151031	4100972	60217780	744	0	0.1	0.4
20151031	4400513	61475450	743	0	0.5	0.6
20151031	4400515	61476450	741	0	0.1	0.6
20151031	4400517	61477390	744	0	0.3	0.6
20151031	4400546	11160640	744	0	-0.1	0.4
20151031	4400547	60173710	744	0	0.1	0.8
20151031	4400548	11799230	744	0	0.1	0.8
20151031	4400549	60896130	744	0	0.1	0.6
20151031	4400551	60892140	744	0	0.1	0.7
20151031	4400557	61568540	742	0	0.4	0.4
20151031	4400601	60890150	744	0	-0.5	0.5
20151031	4400608	11093800	744	0	0.1	0.5
20151031	4400609	61613050	744	0	0.3	0.5
20151031	4400613	11475040	744	0	-0.1	0.3
20151031	4400614	61661340	740	0	-0.1	0.6
20151031	4400620	61667370	744	0	0.4	0.7
20151031	4400623	61669330	744	0	-0.3	0.6
20151031	4400624	11341110	702	0	-0.1	0.4
20151031	4400625	61668340	657	0	0.4	0.5
20151021	4400725	11027170	492	30	-0.5	1.5
20151031	4400739	61516840	744	4	0.4	0.7
20151031	4400740	11883820	744	0	-0.1	0.5
20151031	4400744	62953450	744	0	0.0	0.6
20151019	4400745	62956440	445	28	-0.4	2.3
20151031	4400746	62850730	744	0	-0.1	0.6
20151031	4400761	61669320	744	0	-0.4	0.6
20151031	4400762	61664310	744	0	0.6	0.6
20151031	4400763	61667330	618	0	-0.1	0.7
20151031	4400764	61662330	744	1	-0.2	0.7
20151031	4400768	62322360	744	0	0.2	0.8
20151031	4400769	62328360	744	0	0.2	0.6
20151027	4400770	11846540	637	0	-0.1	1.5
20151022	4400771	60554620	459	0	-0.2	0.5

E-SURFMAR DB Monthly Report October 2015

20151031	4400774	61477400	742	0	0.2	0.3
20151031	4400775	61476400	744	0	0.4	0.7
20151031	4400776	61474410	744	0	0.4	0.6
20151031	4400778	61475430	741	0	0.2	0.3
20151031	4400835	60218770	690	0	-0.4	0.4
20151031	4400836	60218680	695	0	-0.1	0.7
20151031	4400837	60209590	695	0	0.0	0.4
20151031	4400839	60205090	697	0	-0.1	0.5
20151031	4400846	60441290	691	0	0.5	0.4
20151031	4400847	60442280	687	0	0.3	0.8
20151031	4400848	60448280	692	0	0.2	0.4
20151031	4400863	60211690	744	0	-0.4	0.4
20151031	4400866	11793240	744	0	-0.3	0.7
20151031	4400867	11593590	744	4	-0.2	0.9
20151031	4400868	11794230	744	0	0.1	0.5
20151031	4400869	61615050	743	0	0.9	1.6
20151031	4400871	11790240	744	0	0.2	0.5
20151031	4400872	60202920	599	39	-0.4	1.2
20151031	4400873	61612060	744	0	0.6	0.9
20151031	4400874	62858910	744	0	0.2	0.5
20151031	4400875	61616040	132	3	-0.2	1.1
20151031	4400877	60526170	695	0	-0.1	0.5
20151031	4400878	60528170	684	0	-0.0	0.6
20151031	4400880	60556880	682	2	-0.1	0.5
20151031	4400885	60218780	692	0	-0.1	0.4
20151031	4400887	60251440	702	0	-0.0	0.3
20151031	4400888	60359010	695	0	-0.1	0.5
20151031	4400889	60202320	697	0	0.1	0.4
20151031	4400890	12000230	700	0	0.1	0.6
20151031	4400891	12007220	694	0	-0.1	0.4
20151031	4400892	60018400	699	0	-0.0	0.5
20151031	6200513	61665360	744	0	0.0	0.5
20151031	6200516	11475100	744	0	0.3	0.3
20151031	6200536	11599570	623	5	-0.3	1.8
20151031	6200539	60891140	744	0	-0.1	0.7
20151031	6200552	11797240	744	0	0.1	0.5
20151031	6200553	11165650	744	0	0.0	0.6
20151031	6200554	62952460	742	0	0.2	0.6
20151031	6200555	61515850	744	0	0.3	0.6
20151031	6200556	61510860	726	0	0.8	0.5
20151031	6200681	11168640	744	0	0.0	0.3
20151031	6200695	60408990	744	0	0.2	0.4
20151031	6200713	11246980	731	0	-0.2	0.5
20151031	6200714	11240980	742	0	-0.2	0.5
20151031	6200940	60203850	693	0	-0.0	0.4
20151031	6200941	60207590	701	0	-0.1	0.4
20151031	6300640	60172710	744	0	0.2	0.3
20151031	6300645	60892150	203	0	-0.1	0.5
20151007	6400517	61619060	152	0	0.7	0.5
20151002	6400518	60892150	35	0	-0.3	0.3
20151031	6400519	61518850	744	0	0.3	0.6
20151031	6400521	11470030	744	0	-0.1	0.4
20151031	6400522	61511870	690	0	0.1	0.6
20151031	6400523	61510870	744	5	-0.3	1.5
20151031	6400524	61619040	744	0	-0.2	0.6
20151031	6400525	60175710	744	0	-0.0	0.5
20151031	6400526	61611070	743	0	-0.4	0.8
20151031	6400527	61514840	744	0	0.3	0.7
20151031	6400528	61471310	702	0	0.2	0.5
20151031	6400529	11027150	744	0	0.4	1.3
20151031	6400530	61470290	700	0	0.3	0.7
20151031	6400547	61473300	687	0	0.2	0.6
20151031	6400549	60898120	744	0	-0.2	0.6
20151031	6400550	11463700	744	0	-0.2	0.6
20151031	6400551	11795230	743	0	0.6	0.7
20151031	6400552	10822640	744	0	0.0	0.6
20151031	6400553	62954270	744	0	-0.2	0.5
20151031	6400554	62958280	744	0	0.3	0.6
20151031	6400606	61515870	627	0	0.9	0.7
20151026	6400615	60173700	613	38	0.2	1.2
20151031	6400621	61614070	744	0	-0.0	0.5
20151031	6400622	60172810	744	0	0.1	0.5
20151031	6400623	11470040	744	0	-0.5	0.7
20151031	6400666	60179710	744	0	0.5	0.5
20151031	6400667	61615060	741	0	-0.4	0.6
20151031	6400668	60177860	744	14	0.0	0.9

E-SURFMAR DB Monthly Report October 2015

20151031	6400692	60172720	743	0	0.4	0.6
20151031	6500511	62857900	744	0	0.1	0.6
20151031	6500512	62951440	744	0	0.5	0.9
20151031	6500513	62953460	741	0	0.5	0.8
20151031	6500514	62954450	744	0	0.3	0.5
20151031	6500516	62954440	744	0	0.2	0.5
20151031	6500517	62957440	744	0	0.4	1.5
20151022	6500518	62959430	511	4	0.7	2.0
20151031	6500596	61511850	734	0	0.2	0.7
20151031	6500599	62326370	744	0	0.1	0.8
20151031	6500601	62320360	744	0	-0.0	0.5
20151031	6500602	62323360	744	0	-0.3	0.6
20151031	6500603	62959440	744	0	0.3	0.6

Air Pressure (hPa), moored buoys, October 2015

Datend	WMO	Telcom	Recvd	GE	Bias	Std
20151028	1300130		653	0	0.2	0.7
20151031	1300131		725	0	0.3	0.6
20151031	6100001		742	0	0.2	0.5
20151031	6100002		738	0	-0.2	0.5
20151031	6100196		444	0	0.1	0.7
20151031	6100197		447	0	-0.2	0.6
20151031	6100280		731	0	0.5	0.6
20151031	6100281		731	0	0.2	0.7
20151031	6100417		726	0	0.5	0.7
20151031	6100430		732	0	0.3	0.7
20151031	6101001		19	6	-0.3	2.6
20151031	6101003		222	1	0.1	0.9
20151031	6200001		744	0	0.1	0.5
20151031	6200024		728	0	0.4	0.6
20151028	6200025		375	0	0.4	0.6
20151031	6200027		246	1	-0.1	0.4
20151031	6200029		740	0	0.1	0.5
20151031	6200030		736	0	-0.1	0.5
20151031	6200081		695	0	0.1	0.4
20151031	6200082		727	0	0.5	0.7
20151031	6200083		732	0	0.3	0.7
20151031	6200084		730	3	0.1	1.3
20151031	6200085		723	0	0.3	0.6
20151031	6200086		721	0	-0.2	0.5
20151031	6200087		743	0	-0.3	0.4
20151031	6200091		742	0	-0.0	0.5
20151031	6200092		743	0	0.2	0.4
20151031	6200093		743	0	0.3	0.5
20151031	6200094		742	0	-0.1	0.5
20151031	6200095		744	2	-0.0	0.7
20151031	6200105		734	0	-0.0	0.5
20151031	6200163		743	0	0.0	0.6
20151002	6200191		36	0	0.1	0.5
20151003	6200192		64	0	0.3	0.5
20151028	6200303		145	1	0.0	0.8
20151031	6400045		695	0	0.1	0.5
20151031	6400046		737	0	0.1	0.5

Air Temperature (C), moored buoys, October 2015

Datend	WMO	Telcom	Recvd	GE	Bias	Std
20151028	1300130		592	0	5.6	2.5
20151031	1300131		725	0	0.9	0.7
20151031	6100001		743	0	-0.6	0.6
20151031	6100002		743	0	-0.3	0.7
20151031	6100196		444	0	-0.4	0.5
20151031	6100197		447	0	1.0	0.6
20151031	6100280		731	0	0.2	0.6
20151031	6100281		731	0	0.1	0.7
20151031	6100417		726	0	-0.1	0.5
20151031	6100430		731	0	1.4	0.4
20151031	6101001		19	0	-0.2	0.4
20151031	6101008		208	0	0.6	0.7
20151031	6200001		744	0	-0.2	0.4

E-SURFMAR DB Monthly Report October 2015

20151031	6200024	728	0	0.3	0.7
20151028	6200025	374	0	-0.6	0.7
20151031	6200029	740	0	-0.1	0.4
20151031	6200030	736	0	-0.6	0.6
20151031	6200081	695	0	-0.1	0.4
20151031	6200082	727	0	-0.3	0.5
20151031	6200083	732	0	-0.4	0.5
20151031	6200084	730	0	-0.0	1.4
20151031	6200085	723	0	-0.1	0.8
20151031	6200086	721	0	-0.3	0.6
20151031	6200087	743	0	-0.5	0.7
20151031	6200091	742	0	0.0	0.4
20151031	6200092	743	0	-0.2	0.4
20151031	6200093	743	0	0.0	0.5
20151031	6200094	742	0	0.0	0.4
20151031	6200095	740	0	-0.5	0.8
20151031	6200105	734	0	-0.1	0.5
20151031	6200163	743	0	-0.0	0.4
20151002	6200191	36	0	0.2	0.6
20151003	6200192	64	0	0.7	0.6
20151008	6200303	29	0	-0.4	0.8
20151031	6400045	744	0	-0.3	0.5
20151031	6400046	737	0	-0.4	0.5
20151031	6600021	742	0	0.0	0.6
20151031	6600022	706	0	0.2	0.7
20151022	6600024	514	0	0.1	0.6

Wind direction (deg.), moored buoys, October 2015

Datend	WMO	Telcom	Recvd	GE	Bias	Std
20151028	1300130		552	89	-10	34
20151031	1300131		722	76	2	38
20151031	6100001		743	58	2	31
20151031	6100002		736	41	-7	27
20151031	6100196		437	3	-5	23
20151031	6100197		446	105	12	67
20151031	6100280		718	35	4	34
20151031	6100281		690	70	9	36
20151031	6100417		716	17	2	24
20151031	6100430		729	39	-6	28
20151031	6101001		19	0	-5	11
20151031	6101003		222	11	-16	35
20151031	6101008		208	82	-107	42
20151031	6200001		743	6	-4	18
20151031	6200024		726	33	4	27
20151028	6200025		365	24	6	29
20151031	6200027		213	3	3	30
20151031	6200029		738	7	-2	15
20151031	6200081		695	1	-2	15
20151031	6200082		677	4	3	20
20151031	6200083		732	4	-5	18
20151031	6200084		700	6	-2	18
20151031	6200085		697	4	-3	26
20151031	6200086		717	3	3	13
20151031	6200087		742	2	-2	13
20151031	6200091		742	4	-1	19
20151031	6200092		743	1	1	15
20151031	6200093		743	5	3	16
20151031	6200094		742	11	-1	16
20151031	6200095		725	9	-5	17
20151031	6200105		735	2	-2	13
20151031	6200163		743	0	-2	14
20151002	6200191		34	3	-8	44
20151003	6200192		64	3	0	28
20151028	6200303		150	8	-1	25
20151031	6200442		744	5	5	16
20151031	6400046		737	1	4	16
20151031	6600021		740	5	-0	14
20151031	6600022		707	6	-2	17
20151022	6600024		514	2	5	19

E-SURFMAR DB Monthly Report October 2015

Wind speed rate, moored buoys, October 2015

Datend	WMO	Telcom	Recvd	GE	Rate	Err
20151028	1300130		552	0	1.1	2.1
20151031	1300131		722	0	1.3	2.1
20151031	6100001		743	0	1.4	2.3
20151031	6100002		736	3	1.0	1.9
20151031	6100196		437	0	1.0	2.0
20151031	6100197		446	17	0.8	2.4
20151031	6100280		718	0	1.1	1.6
20151031	6100281		690	0	1.5	1.7
20151031	6100417		716	0	1.0	1.5
20151031	6100430		729	0	1.4	1.7
20151031	6101001		19	0	1.0	1.0
20151031	6101003		222	0	0.8	2.0
20151031	6101008		208	0	0.0	0.0
20151031	6200001		743	0	1.0	1.3
20151031	6200024		726	0	1.3	1.7
20151028	6200025		365	0	0.7	1.9
20151031	6200027		213	0	1.0	1.3
20151031	6200029		738	2	1.0	1.1
20151031	6200081		695	0	1.0	1.2
20151031	6200082		677	0	0.8	1.6
20151031	6200083		732	0	0.8	1.7
20151031	6200084		700	0	0.7	2.1
20151031	6200085		697	0	0.9	1.5
20151031	6200086		716	0	1.1	1.0
20151031	6200087		742	1	1.1	1.2
20151031	6200091		742	0	1.0	1.3
20151031	6200092		743	0	0.9	1.2
20151031	6200093		743	0	1.0	1.4
20151031	6200094		742	0	1.0	1.4
20151031	6200095		725	0	1.0	1.5
20151031	6200105		735	0	1.0	1.2
20151031	6200163		743	0	1.0	1.2
20151002	6200191		34	0	1.1	1.0
20151003	6200192		64	0	1.2	0.9
20151028	6200303		150	2	1.0	2.1
20151031	6200442		744	0	1.0	1.3
20151031	6400046		737	0	1.0	1.7
20151031	6600021		740	0	1.1	1.0
20151031	6600022		707	1	1.2	1.1
20151022	6600024		514	0	1.2	1.0

Comments on QC statistics :

Air pressure

1. Metocean buoy WMO **4400875** and **6400529** reported pressure values with a systematic bias of about 2 hPa. A correction was respectively applied on GTS data on the 26th of October and on the 3th of November.
2. Metocean buoy WMO **4400869** has a pressure error increases and reaches the end of October 7 hPa. A coorection of this value is applied at the end of October.
3. Metocean buoy WMO **2500619**, **4400872**, **6200536**, **6400523**, **6400668** and **6500517** temporarily reported wrong pressure values during October for unknown reasons.
4. Metocean buoy WMO **4400725**, **4400745**, **4400770**, **6400615** and **6500518** reported wrong pressure values before their transmission was stopped.
5. Greek moored buoy WMO **6101001** reported wrong pressure values just when it restart to emit the 29th of October.
6. Eumetnet Spanish moored buoy WMO **6200084** temporarily reported wrong pressure values for unknown reasons in the middle of the month.

E-SURFMAR DB Monthly Report October 2015

Air Temperature

1. Since the 5th October Spanish moored buoy WMO **1300130** reported air temperature values with a systematic bias of about 5°C.
2. Spanish moored buoy WMO **6100430** reported on the whole of month air temperature values with a systematic bias of about 1 or 2 °C.
3. Eumetnet Spanish moored buoy WMO **6200084** also reported wrong air temperature values for unknown reasons in the middle of the month.

Wind

1. Spanish moored buoy WMO **6100197** probably reported a few wrong wind speed data during the month.
2. Greek moored buoy WMO **6101008** continued to report abnormal calm winds onto the GTS.

Monthly QC statistics and other data quality control tools are available on line at :
<http://www.meteo.shom.fr/qctools/>

The working area of the E-SURFMAR website is open at <http://esurfmar.meteo.fr/wikisurf-wa/> . Ask the E-SURFMAR Programme Manager Pierre.Blouch@meteo.fr for the password in case you forgot it. Graphs of system performances June be displayed/downloaded at http://esurfmar.meteo.fr/doc/r/surfmar/others/e-surfmar_monitoring.pdf.