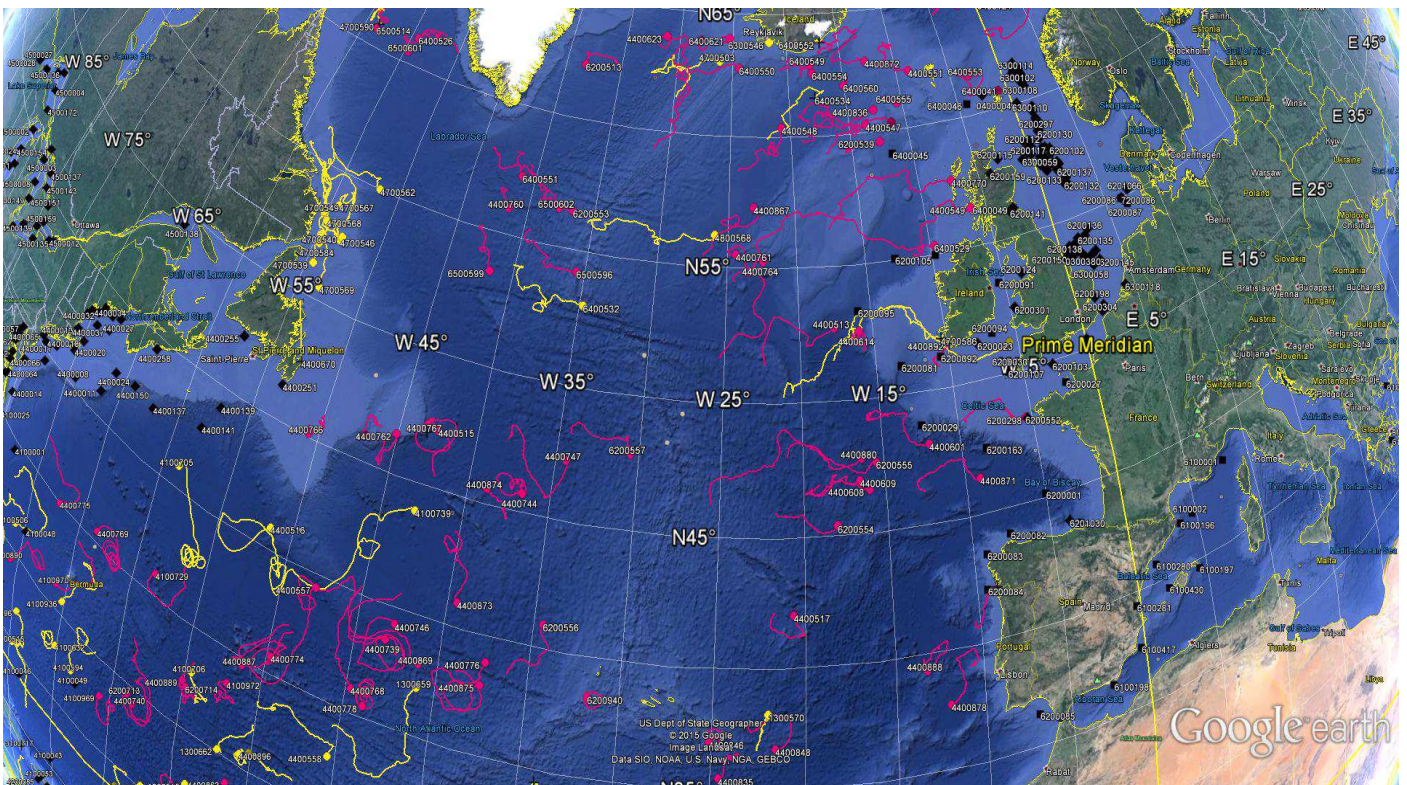


DATA BUOY MONTHLY REPORT

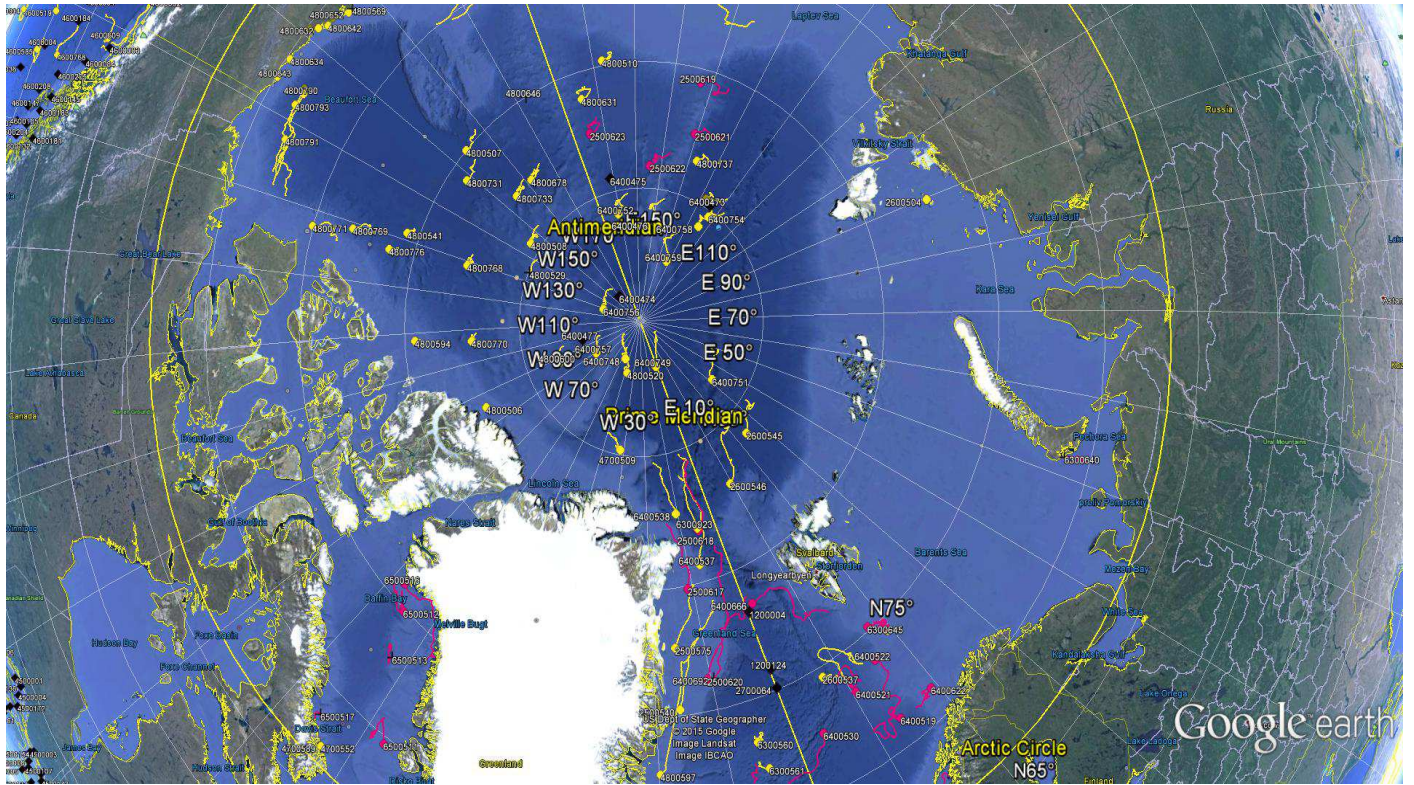
November 2015



*November 2015 : Operating data buoys in the North Atlantic
Drifting buoy trajectories : E-SURFMAR (red), others (yellow)
Moored buoy positions (black)*

*Most recent trajectories may be seen at:
http://www.meteo.shom.fr/cartographie/data/kml/MeteoFrance_buoys_map_15.kmz*

E-SURFMAR DB Monthly Report November 2015



November 2015
Drifting buoy trajectories in Arctic Ocean and adjacent seas : E-SURFMAR (red), others (yellow)

DRIFTING BUOYS

Network status

By the end of November, **140 Drifting buoys**, reporting air pressure onto the GTS, were in operation in the frame of E-SURFMAR. Out of these, 108 were E-SURFMAR funded Iridium SVP-Bs, including 7 in the Arctic, 7 in AtlantOS activities and 9 HRSST-2 buoys. The remaining buoys were: 32 drifters owned by NOAA and upgraded with barometers by E-SURFMAR.

Information about the availability of buoys for future deployments may be get from the E-SURFMAR wikisite (working area) at: http://esurfmar.meteo.fr/wikisurf-wa/index.php/Availability_of_drifting_buoys

Besides E-SURFMAR buoys, 68 drifting buoys were reporting at least air pressure observations from the EUMETNET area of interest.

Drifting buoys - New deployments

WMO	Telcom	Typ	Ow	Dep_Date	DepLat	DepLon	From	Comment
4400747	62327370	MSB	EU	20151102	47.6	-38.0	Liverpool	Atlantic Conveyor
4400760	61662360	MSB	EU	20151110	56.9	-43.3		Reactivated after a long silent (July)
4400765	62325370	MSB	EU	20151103	46.6	-46.0	Liverpool	Atlantic Conveyor
4400766	62326340	MSB	EU	20151103	46.1	-50.0	Liverpool	Atlantic Conveyor
6200557	62328340	MSB	EU	20151101	48.2	-34.1	Liverpool	Atlantic Conveyor
6400555	62955280	MSB	EU	20151121	61.3	-12.0	Rotterdam	Lagarfoss
6400560	62956270	MSB	EU	20151121	62.1	-14.9	Rotterdam	Lagarfoss
6500515	62858710	MSB	EU	20151116	65.0	-55.1		Redeployed by Knud Rasmussen

Operating drifting buoys in North Atlantic by the end of the month

WMO	Telcom	Typ	Ow	nobs	Wi	AT	AP	dP	ST	Wa	Ws	Dr	Sb	U	SS	O	Start_end	Lat	Lon	Age
1300868	11686410	MSB	EU	711	-	-	X	-	X	-	-	X	-	-	-	T	0111-3011	33.66	-13.69	375
1300869	11688410	MSB	EU	720	-	-	X	-	X	-	-	X	-	-	-	T	0111-3011	23.49	-40.81	373
1300870	61512860	MSB	EU	720	-	-	X	-	X	-	-	X	-	-	-	T	0111-3011	32.06	-14.27	263
1300871	61516870	MSB	EU	691	-	-	X	-	X	-	-	X	-	-	-	T	0111-3011	28.09	-33.44	261
1300872	61611050	MSB	EU	720	-	-	X	-	X	-	-	X	-	-	-	T	0111-3011	25.99	-28.56	262
2500617	61767070	MSB	EU	721	-	-	X	-	S	-	-	-	-	-	-	T	0111-3011	79.89	-11.11	436
2500618	11020180	MSB	EU	720	-	-	X	-	-	-	-	X	-	-	-	T	0111-3011	81.92	-5.01	224
2500619	62856890	MSB	EU	720	-	-	X	-	X	-	-	-	-	-	-	T	0111-3011	80.57	143.01	89
2500620	61760090	MSB	EU	720	-	-	X	-	X	-	-	-	-	-	-	T	0111-3011	76.30	-10.61	430
2500621	62956120	MSB	EU	720	-	-	X	-	X	-	-	-	-	-	-	T	0111-3011	82.60	140.61	88
2500622	62850900	MSB	EU	720	-	-	X	-	X	-	-	-	-	-	-	T	0111-3011	84.15	154.51	85
2500623	62955110	MSB	EU	720	-	-	X	-	X	-	-	-	-	-	-	T	0111-3011	82.56	174.82	78
4100729	62321360	MSB	EU	720	-	-	X	-	X	-	-	X	-	-	-	T	0111-3011	36.06	-58.27	188
4100730	62326350	MSB	EU	720	-	-	X	-	X	-	-	X	-	-	-	T	0111-3011	31.23	-77.41	187
4100731	62329360	MSB	EU	720	-	-	X	-	X	-	-	X	-	-	-	T	0111-3011	25.77	-54.29	193
4100969	60213780	PSB	UP	720	-	-	X	-	X	-	-	X	-	-	-	T	0111-3011	28.20	-60.78	845
4100970	60213790	PSB	UP	720	-	-	X	-	X	-	-	X	-	-	-	T	0111-3011	31.38	-65.85	844
4100972	60217780	PSB	UP	718	-	-	X	-	X	-	-	X	-	-	-	T	0111-3011	33.58	-52.08	844
4400513	61475450	DSB	UP	720	-	-	X	-	X	-	-	X	-	-	-	T	0111-3011	52.72	-17.66	267
4400515	61476450	DSB	UP	719	-	-	X	-	X	-	-	X	-	-	-	T	0111-3011	47.19	-42.48	269
4400517	61477390	DSB	UP	719	-	-	X	-	X	-	-	X	-	-	-	T	0111-3011	42.09	-20.67	266
4400546	11160640	MSB	EU	720	-	-	X	-	X	-	-	X	-	-	-	T	0111-3011	26.67	-48.43	986
4400547	60173710	MSB	EU	630	-	-	X	-	X	-	-	X	-	-	-	T	0111-3011	60.31	-13.62	477
4400548	11799230	MSB	E2	720	-	-	X	-	X	-	-	X	-	-	-	T	0111-3011	60.37	-20.77	477
4400549	60896130	MSB	EU	720	-	-	X	-	X	-	-	X	-	-	-	T	0111-3011	56.50	-6.31	450
4400551	60892140	MSB	EU	720	-	-	X	-	X	-	-	X	-	-	-	T	0111-3011	62.26	-8.85	450
4400557	61568540	DSB	UP	718	-	-	X	-	X	-	-	X	-	-	-	T	0111-3011	39.52	-47.78	139
4400601	60890150	MSB	EU	720	-	-	X	-	X	-	-	X	-	-	-	T	0111-3011	48.04	-12.07	449
4400608	11093800	MSB	E2	720	-	-	X	-	X	-	-	X	-	-	-	T	0111-3011	46.66	-16.03	417

E-SURFMAR DB Monthly Report November 2015

4400609	61613050	MSB	EU	720	-	-	X	-	X	-	-	X	-	-	-	T	0111-3011	47.02	-16.59	299
4400613	11475040	MSB	EU	720	-	-	X	-	X	-	-	X	-	-	-	T	0111-3011	25.01	-35.35	1000
4400614	61661340	MSB	EU	720	-	-	X	-	X	-	-	X	-	-	-	T	0111-3011	52.53	-15.98	580
4400620	61667370	MSB	EU	720	-	-	X	-	X	-	-	X	-	-	-	T	0111-3011	60.31	-11.35	579
4400623	61669330	MSB	EU	720	-	-	X	-	X	-	-	X	-	-	-	T	0111-3011	63.84	-31.27	298
4400624	11341110	YSB	EU	665	-	-	X	-	X	-	-	X	-	-	-	T	0111-3011	24.58	-35.73	1085
4400625	61668340	MSB	EU	678	-	-	X	-	X	-	-	X	-	-	-	T	0111-3011	65.31	-35.59	578
4400739	61516840	MSB	EU	720	-	-	X	-	X	-	-	X	-	-	-	T	0111-3011	38.65	-43.15	546
4400740	11883820	PSB	UP	720	-	-	X	-	X	-	-	X	-	-	-	T	0111-3011	29.34	-58.19	1241
4400744	62953450	MSB	EU	720	-	-	X	-	X	-	-	X	-	-	-	T	0111-3011	45.74	-36.67	127
4400746	62850730	MSB	EU	720	-	-	X	-	X	-	-	X	-	-	-	T	0111-3011	39.39	-42.76	123
4400747	62327370	MSB	EU	685	-	-	X	-	X	-	-	X	-	-	-	T	0211-3011	47.28	-34.36	29
4400760	61662360	MSB	EU	352	-	-	X	-	X	-	-	X	-	-	-	T	1611-3011	56.01	-41.45	298
4400761	61669320	MSB	EU	720	-	-	X	-	X	-	-	X	-	-	-	T	0111-3011	55.51	-24.41	298
4400762	61664310	MSB	EU	720	-	-	X	-	X	-	-	X	-	-	-	T	0111-3011	46.54	-45.05	297
4400763	61667330	MSB	EU	706	-	-	X	-	X	-	-	X	-	-	-	T	0111-3011	63.80	-27.98	261
4400764	61662330	MSB	EU	720	-	-	X	-	X	-	-	X	-	-	-	T	0111-3011	55.27	-22.45	260
4400765	62325370	MSB	EU	653	-	-	X	-	X	-	-	X	-	-	-	T	0311-3011	46.03	-46.98	28
4400766	62326340	MSB	EU	658	-	-	X	-	X	-	-	X	-	-	-	T	0311-3011	45.16	-50.68	28
4400768	62322360	MSB	EU	720	-	-	X	-	X	-	-	X	-	-	-	T	0111-3011	36.10	-44.65	192
4400769	62328360	MSB	EU	720	-	-	X	-	X	-	-	X	-	-	-	T	0111-3011	35.62	-63.38	193
4400770	11846540	MSB	E2	712	-	-	X	-	X	-	-	X	-	-	-	T	0111-3011	57.68	-7.34	152
4400774	61477400	DSB	UP	719	-	-	X	-	X	-	-	X	-	-	-	T	0111-3011	35.81	-49.66	380
4400775	61476400	DSB	UP	720	-	-	X	-	X	-	-	X	-	-	-	T	0111-3011	35.05	-67.08	380
4400776	61474410	DSB	UP	719	-	-	X	-	X	-	-	X	-	-	-	T	0111-3011	38.98	-37.37	379
4400778	61475430	DSB	UP	719	-	-	X	-	X	-	-	X	-	-	-	T	0111-3011	35.56	-43.82	378
4400835	60218770	PSB	UP	720	-	-	X	-	X	-	-	X	-	-	-	T	0111-3011	35.56	-24.57	637
4400836	60218680	PSB	UP	720	-	-	X	-	X	-	-	X	-	-	-	T	0111-3011	60.88	-12.73	637
4400837	60209490	PSB	UP	720	-	-	X	-	X	-	-	X	-	-	-	T	0111-3011	23.97	-28.15	637
4400839	60205090	PSB	UP	720	-	-	X	-	X	-	-	X	-	-	-	T	0111-3011	32.78	-20.02	637
4400846	60441290	DSB	UP	720	-	-	X	-	X	-	-	X	-	-	-	T	0111-3011	37.06	-25.13	674
4400848	60448280	DSB	UP	720	-	-	X	-	X	-	-	X	-	-	-	T	0111-3011	36.78	-21.62	673
4400863	60211690	PSB	UP	720	-	-	X	-	X	-	-	X	-	-	-	T	0111-3011	28.84	-51.29	868
4400866	11793240	MSB	E2	720	-	-	X	-	X	-	-	X	-	-	-	T	0111-3011	64.55	-1.86	528
4400867	11593590	MSB	EU	720	-	-	X	-	X	-	-	X	-	-	-	T	0111-3011	57.28	-23.12	526
4400868	11794230	MSB	E2	720	-	-	X	-	X	-	-	X	-	-	-	T	0111-3011	27.07	-45.28	937
4400869	61615050	MSB	EU	720	-	-	X	-	X	-	-	X	-	-	-	T	0111-3011	38.13	-41.07	118
4400871	11790240	MSB	E2	720	-	-	X	-	X	-	-	X	-	-	-	T	0111-3011	46.41	-9.10	522
4400873	61612060	MSB	EU	720	-	-	X	-	X	-	-	X	-	-	-	T	0111-3011	41.01	-39.42	119
4400874	62858910	MSB	EU	720	-	-	X	-	X	-	-	X	-	-	-	T	0111-3011	45.61	-38.82	122
4400878	60528170	PSB	UP	720	-	-	X	-	X	-	-	X	-	-	-	T	0111-3011	37.81	-12.03	665
4400880	60656880	PSB	UP	666	-	-	X	-	X	-	-	X	-	-	-	T	0111-3011	47.84	-16.42	666
4400885	60218780	PSB	UP	720	-	-	X	-	X	-	-	X	-	-	-	T	0111-3011	33.77	-22.76	550
4400887	60251440	PSB	UP	720	-	-	X	-	X	-	-	X	-	-	-	T	0111-3011	34.78	-51.32	552
4400888	60359010	PSB	UP	720	-	-	X	-	X	-	-	X	-	-	-	T	0111-3011	39.39	-13.29	550
4400889	60202320	PSB	UP	720	-	-	X	-	X	-	-	X	-	-	-	T	0111-3011	32.38	-54.97	551
4400890	12000230	PSP	UP	720	-	-	X	-	X	-	-	X	-	-	-	T	0111-3011	29.55	-70.69	550
4400891	12007220	PSB	UP	720	-	-	X	-	X	-	-	X	-	-	-	T	0111-3011	28.43	-51.10	548
6200513	61665360	MSB	EU	720	-	-	X	-	X	-	-	X	-	-	-	T	0111-3011	62.17	-38.23	299
6200516	11475100	MSB	EU	720	-	-	X	-	X	-	-	X	-	-	-	T	0111-3011	23.91	-47.63	938
6200539	60891140	MSB	EU	720	-	-	X	-	X	-	-	X	-	-	-	T	0111-3011	59.61	-12.63	452
6200552	11797240	MSB	E2	720	-	-	X	-	X	-	-	X	-	-	-	T	0111-3011	48.24	-5.52	417
6200553	11165650	MSB	EU	720	-	-	X	-	X	-	-	X	-	-	-	T	0111-3011	56.45	-36.62	982
6200554	62952460	MSB	EU	588	-	-	X	-	X	-	-	X	-	-	-	T	0111-3011	45.42	-18.05	120
6200555	61515850	MSB	EU	720	-	-	X	-	X	-	-	X	-	-	-	T	0111-3011	47.64	-15.52	121
6200556	61510860	MSB	EU	659	-	-	X	-	X	-	-	X	-	-	-	T	0111-3011	40.97	-34.46	120
6200557	62328340	MSB	EU	683	-	-	X	-	X	-	-	X	-	-	-	T	0211-3011	47.88	-30.52	30
6200681	11168640	MSB	EU	720	-	-	X	-	X	-	-	X	-	-	-	T	0111-3011	24.74	-37.51	1110
6200695	60408990	MSB	E2	720	-	-	X	-	X	-	-	X	-	-	-	T	0111-3011	26.36	-47.32	938
6200713	11246980	YSB	EU	696	-	-	X	-	X	-	-	X	-	-	-	T	0111-3011	29.62	-58.69	1084
6200714	11240980	YSB	EU	718	-	-	X	-	X	-	-	X	-	-	-	T	0111-3011	32.16	-54.68	1081
6200940	60203850	PSB	UP	720	-	-	X	-	X	-	-	X	-	-	-	T	0111-3011	38.42	-31.67	547
6200941	61516840	PSB	UP	720	-	-	X	-	X	-	-	X	-	-	-	T	0111-3011	34.38	-22.33	547
6300645	60892150	MSB	EU	688	-	-	X	-	X	-	-	X	-	-	-	T	0111-3011	75.16	17.29	39
6400519	61518850	MSB	EU	720	-	-	X	-	X	-	-	X	-	-	-	T	0111-3011	71.24	13.76	317
6400521	11470030	MSB	EU	720	-	-	X	-	X	-	-	X	-	-	-	T	0111-3011	73.32	10.53	932
6400522	61511870	MSB	EU	715	-	-	X	-	X	-	-	X	-	-	-	T	0111-3011	73.90	15.31	465
6400524	61619040	MSB	EU	720	-	-	X	-	X	-	-	X	-	-	-	T	0111-3011	66.92	13.42	387
6400525	60175710	MSB	EU	720	-	-	X	-	X	-	-	X	-	-	-	T	0111-3011	69.38	-15.16	836
6400526	61611070	MSB	EU	719	-	-	X	-	X	-	-	X	-	-	-	T	0111-3011	61.12	-54.17	385
6400528	61471310	DSB	UP	720	-	-	X	-	X	-	-	X	-	-	-	T	0111-3011	64.11	6.19	167
6400529	11027150	MSB	EU	720	-	-	X	-	X	-	-	X	-	-	-	T	0111-3011	55.36	-9.83	168
6400530	61470290	DSB	UP	719	-	-	X	-	X	-	-	X	-	-	-	T	0111-3011	72.53	3.89	167
6400547	61473300	DSB	UP	720	-	-	X	-	X	-	-	X	-	-	-	T	0111-3011	67.11	1.29	166
6400549	60898120	MSB	EU	720	-	-	X	-	X	-	-	X	-	-	-	T	0111-3011	62.88	-17.90	164
6400551	11795230	MSB	E2	717	-	-	X	-	X	-	-	X	-	-	-	T	0111-3011	57.30	-41.04	161

E-SURFMAR DB Monthly Report November 2015

6400553	62954270	MSB	EU	720	-	-	X	-	X	-	-	X	-	-	-	T	0111-3011	61.59	-3.31	80
6400554	62958280	MSB	EU	720	-	-	X	-	X	-	-	X	-	-	-	T	0111-3011	62.52	-17.78	79
6400555	62955280	MSB	EU	182	-	-	X	-	X	-	-	X	-	-	-	T	2311-3011	61.04	-10.55	10
6400560	62956270	MSB	EU	182	-	-	X	-	X	-	-	X	-	-	-	T	2311-3011	61.95	-15.06	10
6400606	61515870	MSB	EU	654	-	-	X	-	X	-	-	X	-	-	-	T	0111-3011	66.86	7.68	313
6400621	61614070	MSB	EU	720	-	-	X	-	X	-	-	X	-	-	-	T	0111-3011	63.96	-25.33	247
6400622	60172810	MSB	EU	720	-	-	X	-	X	-	-	X	-	-	-	T	0111-3011	71.37	19.14	837
6400623	11470040	MSB	EU	720	-	-	X	-	X	-	-	X	-	-	-	T	0111-3011	70.63	-4.98	933
6400666	60179710	MSB	EU	720	-	-	X	-	X	-	-	X	-	-	-	T	0111-3011	78.56	1.51	733
6400667	61615060	MSB	EU	674	-	-	X	-	-	-	-	X	-	-	-	T	0111-3011	60.70	-1.00	705
6400668	60177860	MSB	EU	720	-	-	X	-	X	-	-	X	-	-	-	T	0111-3011	69.03	-17.66	709
6500511	62857900	MSB	EU	504	-	-	X	-	X	-	-	X	-	-	-	T	0111-3011	69.68	-57.19	78
6500512	62951440	MSB	EU	488	-	-	X	-	X	-	-	X	-	-	-	T	0111-3011	74.91	-65.08	76
6500514	62954450	MSB	EU	720	-	-	X	-	X	-	-	X	-	-	-	T	0111-3011	60.73	-58.55	130
6500515	62858710	MSB	EU	350	-	-	X	-	X	-	-	X	-	-	-	T	1611-3011	65.49	-56.33	106
6500516	62954440	MSB	EU	720	-	-	X	-	X	-	-	X	-	-	-	T	0111-3011	75.78	-67.72	97
6500596	61511850	MSB	EU	720	-	-	X	-	X	-	-	X	-	-	-	T	0111-3011	54.22	-35.56	530
6500599	62326370	MSB	EU	720	-	-	X	-	X	-	-	X	-	-	-	T	0111-3011	53.52	-41.65	205
6500601	62320360	MSB	EU	720	-	-	X	-	X	-	-	X	-	-	-	T	0111-3011	60.46	-54.51	202
6500602	62323360	MSB	EU	720	-	-	X	-	X	-	-	X	-	-	-	T	0111-3011	56.46	-37.72	202
6500603	62959440	MSB	EU	720	-	-	X	-	X	-	-	X	-	-	-	T	0111-3011	67.73	-54.01	79

----- Operating AtlantOS drifting buoys by the end of the month

WMO	Telcom	Typ	Ow	nobs	Wi	AT	AP	dP	ST	Wa	Ws	Dr	Sb	U	SS	O	Start_end	Lat	Lon	Age
1500681	61661310	MSB	EU	720	-	-	X	-	X	-	-	X	-	-	-	T	0111-3011	-13.53	-15.07	227
1500682	61663300	MSB	EU	720	-	-	X	-	X	-	-	X	-	-	-	T	0111-3011	-11.04	-4.65	228
1500683	61663370	MSB	EU	720	-	-	X	-	X	-	-	X	-	-	-	T	0111-3011	-11.39	-33.34	229
1500684	62328350	MSB	EU	720	-	-	X	-	X	-	-	X	-	-	-	T	0111-3011	-5.75	-29.40	228
1500685	62854900	MSB	EU	720	-	-	X	-	X	-	-	X	-	-	-	T	0111-3011	-9.57	-8.64	95
1500686	62959110	MSB	EU	720	-	-	X	-	X	-	-	X	-	-	-	T	0111-3011	-5.73	-16.29	95
1500688	62958430	MSB	EU	647	-	-	X	-	X	-	-	X	-	-	-	T	0111-3011	-9.49	-3.13	95

----- Drifting buoys which ceased to be operational

WMO	Telcom	Typ	Ow	End_Date	Lat	Lon	Age	Cause
4400847	60442280	DSB	UP	20151122	42.1	-8.9	666	Picked up by fishermen
4400877	60526170	PSB	UP	20151110	27.8	-18.1	645	Ashore in Canarias
4400892	60018400	PSB	UP	20151112	51.6	-9.9	531	Ashore in Ireland
6200536	11599570	MSB	EU	20151123	67.3	13.5	533	Unknown
6300640	60172710	MSB	EU	20151117	71.3	52.3	826	Ashore in Russia
6400527	61514840	MSB	EU	20151115	63.5	-55.0	369	Unknown
6400552	10822640	MSB	EU	20151108	63.8	-16.8	137	Ashore in Iceland
6400692	60172720	MSB	EU	20151124	76.3	-9.5	642	Unknown
6500513	62953460	MSB	EU	20151114	73.1	-62.3	61	Unknown
6500517	62957440	MSB	EU	20151103	68.6	-65.4	70	Unknown

----- Non-operating drifting buoys reporting GTS data

WMO	Telcom	Typ	Ow	nobs	Wi	AT	AP	dP	ST	Wa	Ws	Dr	Sb	U	SS	O	Start_end	Lat	Lon	Age
2500624	60247420	MSB	EU	720	-	-	-	-	X	-	-	-	-	-	-	T	0111-3011	67.00	-7.37	822
4400604	11794240	MSB	E2	720	-	-	-	-	X	-	-	X	-	-	-	T	0111-3011	46.83	-31.31	419
4400745	62956440	MSB	EU	720	-	-	-	-	X	-	-	X	-	-	-	T	0111-3011	38.83	-32.16	124
4400872	60202920	MSB	EU	720	-	-	S	-	X	-	-	X	-	-	-	T	0111-3011	62.87	-12.76	522
4400875	61616040	MSB	EU	720	-	-	S	-	X	-	-	X	-	-	-	T	0111-3011	38.01	-37.53	119
6400523	61510870	MSB	EU	686	-	-	S	-	X	-	-	X	-	-	-	T	0111-3011	69.02	2.53	387
6400550	11463700	MSB	UP	720	-	-	S	-	X	-	-	X	-	-	-	T	0111-3011	62.74	-24.39	161
6500595	11595570	MSB	EU	720	-	-	-	-	X	-	-	X	-	-	-	T	0111-3011	53.18	-22.84	532

E-SURFMAR DB Monthly Report November 2015

Non-operating drifting buoys which ceased to emit

WMO	Telcom	Typ	Ow	End_Date	Lat	Lon	Age	Cause
4400725	11027170	MSB	EU	20151108	39.0	-54.9	1233	Faded (Battery empty)
6400615	60173700	MSB	EU	20151128	65.5	-33.0	750	Faded (Battery empty)
6500518	62959430	MSB	EU	20151125	74.5	-79.3	62	Unknown

Other operating drifting buoys inside the EUMETNET area by the end of the month

WMO	Telcom	Owner	nobs	Wi	AT	AP	dP	ST	Wa	Ws	Dr	Sb	U	SS	O	Start_end	Lat	Lon
1300515	114951	AOML	692	-	-	X	-	X	-	-	X	-	-	-	L	0111-3011	27.38	-53.88
1300517	114943	AOML	660	-	-	X	-	X	-	-	X	-	-	-	L	0111-3011	16.05	-50.05
1300519	127004	AOML	690	-	-	X	X	X	-	-	X	-	-	-	L	0111-3011	19.94	-42.25
1300530	114916	AOML	684	-	-	X	-	X	-	-	X	-	-	-	L	0111-3011	12.66	-20.94
1300569	114880	AOML	677	-	-	X	-	X	-	-	X	-	-	-	L	0111-3011	29.26	-35.09
1300570	116474	AOML	711	-	-	X	-	X	-	-	X	-	-	-	L	0111-3011	38.21	-22.03
1300572	127002	AOML	715	-	-	X	X	X	-	-	X	-	-	-	L	0111-3011	33.23	-33.41
1300633	109491	AOML	711	-	-	X	X	X	-	-	X	-	-	-	L	0111-3011	30.84	-25.51
1300660	11022040	UKMO	720	-	-	X	-	X	-	-	X	-	-	-	T	0111-3011	31.01	-50.05
1300661	62325770	UKMO	719	-	-	X	-	-	-	-	X	-	-	-	T	0111-3011	15.21	-31.37
1300662	11098800	UKMO	719	-	-	X	-	X	-	-	X	-	-	-	T	0111-3011	30.26	-52.04
1300665	11091810	UKMO	720	-	-	X	-	X	-	-	X	-	-	-	T	0111-3011	22.67	-21.09
1500951	10450430	CMM	572	-	-	X	-	S	-	-	X	-	-	-	T	0111-3011	4.00	9.21
2100942	119223	UKMO	709	-	-	X	X	X	-	-	X	-	-	-	L	0111-3011	28.61	-42.47
2500540		APL	720	-	-	X	X	X	-	-	-	-	-	-	L	0111-3011	75.25	-15.97
2500575			719	-	-	X	X	S	-	-	-	-	-	-	L	0111-3011	77.72	-15.62
2600537	61369210	PSC	705	-	-	X	X	X	-	-	X	-	-	-	O	0111-3011	74.61	7.32
2600545			174	-	-	X	X	X	-	-	-	-	-	-	O	0111-3011	84.03	24.31
2600546			720	-	-	X	X	X	-	-	X	-	-	-	O	0111-3011	82.99	9.47
3100515	114946	AOML	685	-	-	X	-	X	-	-	X	-	-	-	L	0111-3011	25.23	-69.41
3100863	61611040	CMM	720	-	-	X	-	X	-	-	X	-	-	-	T	0111-3011	25.32	-57.01
4100506			301	-	-	X	-	X	-	-	X	-	-	-	L	1511-2811	31.88	-69.98
4100564	109221	AOML	667	-	-	X	-	X	-	-	X	-	-	-	L	0111-3011	29.11	-34.73
4100594	127029	AOML	717	-	-	X	X	X	-	-	X	-	-	-	L	0111-3011	27.94	-63.38
4100596	11473050	EUME	720	-	-	X	-	X	-	-	X	-	-	-	T	0111-3011	27.35	-69.25
4100597	61512840	AOML	720	-	-	X	-	X	-	-	X	-	-	-	T	0111-3011	23.89	-59.02
4100635	61475300	CMM	718	-	-	X	-	X	-	-	X	-	-	-	T	0111-3011	21.71	-45.74
4100637	62859910	CMM	209	-	-	X	-	X	-	-	X	-	-	-	T	0111-3011	17.07	-50.50
4100638	62955440	CMM	720	-	-	X	-	X	-	-	X	-	-	-	T	0111-3011	14.00	-52.66
4100706	11595580	AOML	720	-	-	X	-	X	-	-	X	-	-	-	T	0111-3011	33.02	-54.45
4100707	62957110	CMM	720	-	-	X	-	S	-	-	X	-	-	-	T	0111-3011	13.77	-61.05
4100708	62958100	CMM	720	-	-	X	-	X	-	-	X	-	-	-	T	0111-3011	13.25	-37.95
4100711	11477030	CMM	720	-	-	X	-	X	-	-	X	-	-	-	T	0111-3011	32.61	-35.86
4100739	11912120	UKMO	719	-	-	X	-	X	-	-	X	-	-	-	T	0111-3011	43.97	-42.84
4100936	109488	AOML	717	-	-	X	X	-	-	-	X	-	-	-	L	0111-3011	30.87	-65.04
4100975	109439	AOML	707	-	-	X	X	X	-	-	X	-	-	-	L	0111-3011	30.51	-24.82
4400516	114599	AOML	682	-	-	X	X	X	-	-	X	-	-	-	L	0111-3011	40.93	-51.44
4400519	70840	AOML	716	-	-	X	X	X	-	-	X	-	-	-	L	0111-3011	51.18	-5.61
4400558	123286	AOML	718	-	-	X	X	X	-	-	X	-	-	-	L	0111-3011	32.72	-45.40
4400896	109438	AOML	718	-	-	X	X	X	-	-	X	-	-	-	L	0111-3011	30.69	-50.64
4700503		APL	719	-	-	X	X	X	-	-	-	-	-	-	L	0111-3011	63.00	-26.19
4700509		APL	717	-	-	X	X	X	-	-	X	-	-	-	O	0111-3011	85.19	-31.73
4700539			585	-	-	X	X	X	-	-	X	-	-	-	O	0611-3011	51.47	-54.43
4700540			585	-	-	X	X	X	-	-	X	-	-	-	O	0611-3011	52.70	-53.02
4700546			572	-	-	X	X	X	-	-	X	-	-	-	O	0611-3011	52.54	-53.07
4700549			583	-	-	X	X	X	-	-	X	-	-	-	O	0611-3011	53.27	-55.18
4700551		EC	718	-	-	X	X	X	-	-	-	-	-	-	O	0111-3011	62.49	-61.07
4700552		EC	720	-	-	X	X	S	-	-	X	-	-	-	O	0111-3011	67.39	-63.27
4700562			581	-	-	X	X	X	-	-	X	-	-	-	O	0611-3011	55.01	-51.58
4700567			585	-	-	X	X	X	-	-	X	-	-	-	O	0611-3011	53.82	-54.17
4700568			584	-	-	X	X	X	-	-	X	-	-	-	O	0611-3011	52.99	-54.67
4700569			585	-	-	X	X	X	-	-	X	-	-	-	O	0611-3011	50.66	-53.32
4700584			585	-	-	X	X	X	-	-	X	-	-	-	O	0611-3011	52.22	-54.56
4700586	11541440	EC	623	-	-	X	X	X	-	-	X	-	-	-	O	0111-2811	51.86	-10.39
4700589		EC	707	-	-	X	X	S	-	-	-	-	-	-	O	0111-3011	67.39	-63.30
4800520			658	-	-	X	X	X	-	-	X	-	-	-	L	0111-3011	88.02	-37.06
4800568	61363210	PSC	707	-	-	X	X	X	-	-	X	-	-	-	O	0111-3011	56.20	-25.97
4800597	100009	PSC	567	-	-	X	X	-	-	-	-	-	-	-	O	0111-3011	72.62	-19.80
6300546	61361200	PSC	708	-	-	X	X	X	-	-	X	-	-	-	O	0111-3011	63.83	-21.59
6300560	60654120		719	-	-	X	-	X	-	-	X	-	-	-	L	0111-3011	73.28	-5.26

E-SURFMAR DB Monthly Report November 2015

6300561	60654200	719	-	-	X	-	X	-	-	X	-	-	-	L	0111-3011	72.07	-4.70
6300923		720	-	X	X	X	-	-	-	S	-	-	-	O	0111-3011	82.09	-4.82
6400532	EC	719	-	-	X	X	X	-	-	-	-	-	-	L	0111-3011	53.02	-34.71
6400537		240	X	X	X	X	S	-	-	X	-	X	-	O	0111-3011	80.68	-7.04
6400538	EC	711	-	X	X	X	-	-	-	-	-	-	-	O	0111-3011	82.75	-10.57
6400748		885	-	X	X	X	X	-	-	X	-	-	-	O	0511-3011	88.49	-45.16
6400749		800	-	X	X	X	X	-	-	X	-	-	-	O	0111-3011	88.21	-0.94
6400751		307	-	X	X	X	X	-	-	X	-	-	-	O	1911-3011	86.36	31.67

----- Abbreviations -----

WMO : WMO id.
 Telcom : Telcom id.
 Typ : Buoy type
 - first character : Manufacturer (D = DBI , M = Metocean, P = Pacific Gyre
 T = Technocean, Y = Marlin-Yug...)
 - second character : Main type (F = FGGE, I = ICEB, S = SVP)
 - third character : Sub type (B = barometer buoy, W = Wind buoy,
 S = Salinity buoy)

Ow : Buoy owner (country code or EU for EUCOS, E2 for HRSST-2 buoys, UP for upgraded buoys)

Owner : Buoy owner for non EUCOS buoys
 Nobs : number of GTS reports received at Meteo-France
 Parameters (X = OK, S = stopped, - = not measured) :
 Wi : Wind
 AT : Air Temperature
 AP : Air Pressure
 dP : Air pressure tendency
 ST : Sea surface Temperature
 Wa : Wave period and height
 Ws : Wave spectra
 Dr : Drogue presence
 Sb : Subsurface temperature
 U : Relative humidity
 SS : Sea surface Salinity

O : Origin of the reports (T = CLS Toulouse, L = CLS America, O = Other)

Start_end : first and last dates of the month for which GTS data were received at Meteo-France
 Lat : Latitude of the latest position
 Lon : Longitude of the latest position
 Age : Age of the buoy (days)
 DepDate : Date of deployment
 DepLat : Latitude of deployment
 Dep Lon : Longitude of Deployment
 From : Harbour of departure

Definition : An operating drifting buoy is a buoy providing at least air pressure or wind (direction and velocity) data.

MOORED BUOYS

Former EGOS stations (K-pattern and Hydrosphere)

WMO	Name	nobs	Wi	AT	AP	dP	ST	Wa	Ws	Dr	Sb	U	SS	O	Start_end	Lat	Lon
6100001	Cote d'Azur	708	X	X	X	X	X	X	X	-	-	X	-	T	0111-3011	43.40	7.80
6100002	Lion	717	X	X	X	S	X	X	X	-	-	X	-	T	0111-3011	42.10	4.70
6200001	Gascogne	720	X	X	X	X	X	X	-	-	-	X	-	O	0111-3011	45.30	-5.00
6200029	K1	720	X	X	X	X	X	X	-	-	-	X	-	O	0111-3011	48.70	-12.50
6200081	K2	720	X	X	X	X	X	X	-	-	-	X	-	O	0111-3011	51.00	-13.20
6200090	M1	-	-	-	-	-	-	-	-	-	-	-	-	-	-	53.10	-11.20
6200091	M2	720	X	X	X	-	X	X	-	-	-	X	-	O	0111-3011	53.50	-5.40
6200092	M3	720	X	X	X	-	-	X	-	-	-	-	-	O	0111-3011	51.20	-10.50
6200093	M4	719	X	X	X	-	X	-	-	-	-	-	-	O	0111-3011	54.70	-9.10
6200094	M5	719	X	X	X	-	-	X	-	-	-	-	-	O	0111-3011	51.70	-6.70
6200095	M6	751	X	X	X	X	X	X	-	-	-	X	-	O	0111-3011	53.10	-15.90
6200105	K4	679	X	X	X	X	X	X	-	-	-	S	-	O	0111-3011	55.80	-11.40
6200108	K3	-	-	-	-	-	-	-	-	-	-	-	-	-	-	53.50	-19.50
6200163	Brittany	719	X	X	X	X	X	X	X	-	-	X	-	O	0111-3011	47.50	-8.40
6400045	K5	720	-	X	X	X	X	X	-	-	-	X	-	O	0111-3011	59.10	-11.70
6400046	K7	721	X	X	X	-	X	X	-	-	-	X	-	O	0111-3011	60.70	-5.20

Comments:

- EUMETNET moored buoys are presented in bold characters.

Former EGOS moored buoys (Spanish SeaWatch and WaveScan)

WMO	Name	nobs	Wi	AT	AP	dP	ST	Wa	Ws	Dr	Sb	U	SS	O	Start_end	Lat	Lon
1300130	Gran Canaria	-	-	-	-	-	-	-	-	-	-	-	-	-	-	28.18	-15.82
1300131	Tenerife Sur	719	X	X	X	-	X	X	X	-	-	-	X	O	0111-3011	28.00	-16.58
6100196	C. Begur	718	X	X	X	-	-	X	X	-	-	-	-	O	0111-3011	41.92	3.65
6100197	Mahon	720	X	X	X	-	-	X	X	-	-	-	-	O	0111-3011	39.72	4.42
6100198	C. de Gata	350	X	X	X	-	X	X	X	-	-	-	X	O	1611-3011	36.57	-2.33
6100280	Tarragona	693	X	X	X	-	X	X	X	-	-	-	X	O	0111-3011	40.77	1.47
6100281	Valencia	707	X	X	X	-	X	X	X	-	-	-	X	O	0111-3011	39.47	-0.27
6100417	C. de Palos	671	X	X	X	-	X	X	X	-	-	-	X	O	0111-3011	37.65	-0.32
6100430	Dragonera	645	X	X	X	-	X	X	X	-	-	-	-	O	0111-2811	39.56	2.11
6200024	Bilbao-Visc.	719	X	X	X	-	X	X	X	-	-	-	X	O	0111-3011	43.63	-3.03
6200025	C. de Penas	497	X	X	X	-	X	X	X	-	-	-	X	O	1011-3011	43.73	-6.17
6200082	E. de Bares	723	X	X	X	-	X	X	X	-	-	-	X	O	0111-3011	44.13	-7.69
6200083	Villano-Sis.	586	X	X	X	-	X	X	X	-	-	-	X	O	0111-3011	43.48	-9.22
6200084	C. Silleiro	709	X	X	X	-	X	X	X	-	-	-	X	O	0111-3011	42.12	-9.43
6200085	G. de Cadiz	713	X	X	X	-	X	X	X	-	-	-	X	O	0111-3011	36.48	-6.97
6201030	Santander	400	X	X	X	-	X	X	X	-	-	-	X	O	0411-3011	43.84	-3.77

Comments:

- The EUMETNET buoy is presented in bold characters.

Operating POSEIDON moored buoys (Greece)

WMO	Name	nobs	Wi	AT	AP	dP	ST	Wa	Ws	Dr	Sb	U	SS	O	Start_end	Lat	Lon
6101000		-	-	-	-	-	-	-	-	-	-	-	-	-	-	39.10	24.50
6101001		26	S	S	S	-	-	S	-	-	-	-	-	-	0111-0411	37.60	23.60
6101002		-	-	-	-	-	-	-	-	-	-	-	-	-	-	37.00	22.10
6101003		155	X	-	X	-	-	X	-	-	-	-	-	O	0111-3011	40.00	24.70

**E-SURFMAR DB Monthly Report
November 2015**

6101004	-	-	-	-	-	-	-	-	-	-	-	-	-	-	39.10	25.80
6101005	-	-	-	-	-	-	-	-	-	-	-	-	-	-	37.50	25.50
6101006	-	-	-	-	-	-	-	-	-	-	-	-	-	-	36.30	25.50
6101007	-	-	-	-	-	-	-	-	-	-	-	-	-	-	35.80	24.90
6101008	180	X	X	-	-	-	X	-	-	-	-	-	O	0111-3011	36.80	21.60
6101009	-	-	-	-	-	-	-	-	-	-	-	-	-	-	38.00	20.60

Other European moored buoys (operated by 3rd parties)

WMO	Name	nobs	Wi	AT	AP	dP	ST	Wa	Ws	Dr	Sb	U	SS	O	Start_end	Lat	Lon
1200050	Cycofos	-	-	-	-	-	-	-	-	-	-	-	-	-	-	33.60	31.90
6100010	Italia-1	-	-	-	-	-	-	-	-	-	-	-	-	-	-	43.80	9.10
6200027	Jersey	238	X	-	X	X	-	X	-	-	-	-	-	O	0111-3011	49.08	-22.20
6200030	L4	704	-	X	X	-	-	-	-	-	-	X	-	O	0111-3011	50.25	-4.22
6200050	E1	-	-	-	-	-	-	-	-	-	-	-	-	-	-	50.04	-4.37
6200086	NSB II	668	X	X	X	X	X	-	-	-	-	X	-	O	0111-3011	55.00	6.40
6200087	NSB III	713	X	X	X	X	X	-	-	-	-	X	-	O	0111-3011	54.70	6.80
6200191	Porto	-	-	-	-	-	-	-	-	-	-	-	-	-	-	41.15	-9.57
6200192	Peniche	-	-	-	-	-	-	-	-	-	-	-	-	-	-	39.50	-9.65
6200303	Turbo Bank	-	-	-	-	-	-	-	-	-	-	-	-	-	-	51.60	-5.10
6200442	PAP	736	X	-	-	-	-	-	-	-	-	-	-	O	0111-3011	49.00	-16.40
6600021	Arkona Becken	714	X	X	-	-	X	S	-	-	-	-	-	O	0111-3011	54.90	13.90
6600022	Oder Bank	673	X	X	-	-	X	-	-	-	-	-	-	O	0111-3011	54.10	14.20
6600024	Darsser Schwelle	632	X	X	-	-	X	X	-	-	-	-	-	O	0411-3011	54.70	12.70

Other offshore moored buoys inside the EUMETNET area

WMO	Name	nobs	Wi	AT	AP	dP	ST	Wa	Ws	Dr	Sb	U	SS	O	Start_end	Lat	Lon
1300001		695	X	X	X	-	X	-	-	-	-	X	X	O	0111-3011	11.47	-23.00
1300008		429	X	X	X	-	X	-	-	-	-	X	-	L	0111-3011	14.98	-38.02
1300308	East Atlantic	-	-	-	-	-	-	-	-	-	-	-	-	-	-	15.00	-38.00
4100026		246	X	X	-	-	X	-	-	-	-	X	-	L	0111-3011	11.49	-38.40
4100040	West Atlantic	741	X	X	X	X	X	X	-	-	-	X	-	O	0111-3011	14.50	-53.00
4100041	Mid. Atlantic	739	X	X	X	X	X	X	-	-	-	X	-	O	0111-3011	14.50	-46.00
4100043	Porto Rico	749	X	X	X	X	X	X	-	-	-	X	-	O	0111-3011	21.00	-65.00
4100044		747	X	X	X	X	X	X	-	-	-	X	-	O	0111-3011	21.70	-58.70
4100046		748	X	X	X	X	X	X	-	-	-	X	-	O	0111-3011	23.90	-70.90
4100047		-	-	-	-	-	-	-	-	-	-	-	-	-	-	27.50	-71.50
4100048		748	X	X	X	X	X	X	-	-	-	X	-	O	0111-3011	32.00	-69.60
4100049		749	X	X	X	X	X	X	-	-	-	X	-	O	0111-3011	27.50	-53.00
4100139		680	X	X	X	-	X	-	-	-	-	X	-	L	0111-3011	20.02	-37.86
4100300	Antilles	689	X	X	X	X	X	X	-	-	-	X	-	T	0111-3011	15.85	-57.47
4200059	Caraibes	750	X	X	X	X	X	X	-	-	-	X	-	O	0111-3011	15.00	-67.50
4400008	A Nantucket	748	X	X	X	X	X	X	-	-	-	X	-	O	0111-3011	40.50	-69.40
4400011	D Georges Bk	750	X	X	X	X	X	X	-	-	-	X	-	O	0111-3011	41.10	-66.60
4400018	SE Cape Cod	750	X	X	X	X	X	X	-	-	-	X	-	O	0111-3011	41.30	-69.30
4400024	NNE Channel	651	X	X	X	-	X	X	-	-	-	-	-	O	0111-3011	42.30	-65.90
4400137	E Scotia Sl.	716	X	X	X	X	X	X	-	-	-	-	-	O	0111-3011	42.30	-62.00
4400138	SW Gd Banks	-	-	-	-	-	-	-	-	-	-	-	-	-	-	44.30	-53.60
4400139	Beanquereau	714	X	X	X	X	X	X	-	-	-	-	-	O	0111-3011	44.30	-57.10
4400140	Tail of Bk	-	-	-	-	-	-	-	-	-	-	-	-	-	-	43.80	-51.70
4400141	Larentian F	709	X	X	X	X	X	X	-	-	-	-	-	O	0111-3011	43.00	-58.00
4400150	La Have Bk	679	X	-	X	X	X	X	-	-	-	-	-	O	0111-3011	42.50	-64.00

E-SURFMAR DB Monthly Report November 2015

Buoy-QC statistics from Meteo-France model outputs

Datend : Date of the last value received on GTS
Recvd : Total number of values received on GTS
GE : Number of Gross Errors (excluded from bias and sd computations)
bias : Mean differences between observation values and co-located model output values
Std : Standard deviation of differences

Air Pressure (hPa), drifting buoys, November 2015

Datend	WMO	Telcom	Recvd	GE	Bias	Std
20151130	1300868	11686410	711	0	0.3	0.5
20151130	1300869	11688410	720	0	-0.0	0.3
20151130	1300870	61512860	720	0	1.0	0.6
20151130	1300871	61516870	691	0	0.5	0.4
20151130	1300872	61611050	720	0	0.5	0.4
20151130	1500681	61661310	720	0	0.4	0.7
20151130	1500682	61663300	720	0	0.6	0.9
20151130	1500683	61663370	720	0	0.8	0.4
20151130	1500684	62328350	720	0	-0.3	0.4
20151130	1500685	62854900	720	0	0.1	0.8
20151130	1500686	62959110	720	0	-0.2	0.7
20151130	1500688	62958430	647	0	0.3	0.9
20151130	2500617	61767070	721	0	0.1	1.0
20151130	2500618	11020180	720	0	0.3	0.4
20151130	2500619	62856890	720	0	0.2	0.5
20151130	2500620	61760090	720	0	0.0	0.6
20151130	2500621	62956120	720	0	0.1	0.4
20151130	2500622	62850900	720	0	-0.1	0.4
20151130	2500623	62955110	720	0	0.4	0.4
20151130	4100637	62859910	209	0	0.4	0.6
20151130	4100638	62955440	96	0	0.2	0.7
20151130	4100707	62957110	720	0	-0.4	0.9
20151130	4100708	62958100	720	0	0.2	0.3
20151130	4100729	62321360	720	0	0.2	0.6
20151130	4100730	62326350	720	0	0.6	0.8
20151130	4100731	62329360	720	0	0.2	0.5
20151130	4100969	60213780	643	0	-0.8	0.6
20151130	4100970	60213790	720	0	0.4	0.6
20151130	4100972	60217780	718	0	-0.1	0.4
20151130	4400513	61475450	720	0	0.4	0.8
20151130	4400515	61476450	719	0	0.0	0.6
20151130	4400517	61477390	719	0	0.2	0.4
20151130	4400546	11160640	720	0	-0.2	0.4
20151130	4400547	60173710	356	38	-1.1	3.0
20151130	4400548	11799230	720	0	0.2	0.6
20151130	4400549	60896130	720	0	-0.1	1.1
20151130	4400551	60892140	720	0	-0.1	0.6
20151130	4400557	61568540	718	0	0.4	0.5
20151130	4400601	60890150	720	0	-0.4	0.7
20151130	4400608	11093800	720	0	0.1	0.5
20151130	4400609	61613050	720	0	0.4	0.6
20151130	4400613	11475040	720	0	-0.2	0.3
20151130	4400614	61661340	720	0	-0.1	1.1
20151130	4400620	61667370	720	0	0.3	0.8
20151130	4400623	61669330	720	0	-0.3	0.6
20151130	4400624	11341110	665	0	-0.2	0.3
20151130	4400625	61668340	678	0	0.2	0.8
20151130	4400739	61516840	720	0	0.1	0.5
20151130	4400740	11883820	720	0	-0.1	0.5
20151130	4400744	62953450	720	0	0.0	0.7
20151130	4400746	62850730	720	0	-0.0	0.6
20151130	4400747	62327370	685	0	-0.1	0.8
20151130	4400760	61662360	352	0	-0.3	0.6
20151130	4400761	61669320	720	0	-0.4	0.6
20151130	4400762	61664310	720	0	0.4	0.7
20151130	4400763	61667330	706	0	-0.0	0.6
20151130	4400765	62325370	653	0	0.5	0.8
20151130	4400766	62326340	658	0	0.4	0.6
20151130	4400764	61662330	720	0	-0.4	0.7
20151130	4400768	62322360	720	3	0.4	0.9
20151130	4400769	62328360	720	0	0.3	0.6
20151130	4400770	11846540	161	3	-0.6	1.8

E-SURFMAR DB Monthly Report November 2015

20151130	4400774	61477400	719	0	0.0	0.5
20151130	4400775	61476400	720	0	0.6	0.6
20151130	4400776	61474410	719	0	0.4	0.5
20151130	4400778	61475430	719	0	0.1	0.4
20151130	4400835	60218770	720	0	-0.4	0.4
20151130	4400836	60218680	720	0	0.1	0.6
20151130	4400837	60209590	720	0	-0.1	0.4
20151130	4400839	60205090	720	0	-0.1	0.5
20151130	4400846	60441290	720	0	0.4	0.4
20151122	4400847	60442280	469	0	0.3	0.5
20151130	4400848	60448280	720	0	0.2	0.4
20151130	4400863	60211690	720	0	-0.4	0.4
20151130	4400866	11793240	720	0	-0.3	0.6
20151130	4400867	11593590	720	0	-0.2	0.4
20151130	4400868	11794230	720	0	0.0	0.5
20151130	4400869	61615050	720	0	0.8	0.9
20151130	4400871	11790240	720	0	0.2	0.6
20151130	4400872	60202920	360	66	-0.7	2.2
20151130	4400873	61612060	720	0	0.3	0.8
20151130	4400874	62858910	720	0	0.3	0.7
20151124	4400875	61616040	564	3	-0.5	1.5
20151110	4400877	60526170	231	0	-0.1	0.6
20151130	4400878	60528170	720	0	0.0	0.5
20151130	4400880	60556880	656	3	-0.3	0.7
20151130	4400885	60218780	720	0	-0.1	0.4
20151130	4400887	60251440	720	0	-0.2	0.5
20151130	4400888	60359010	720	0	-0.1	0.5
20151130	4400889	60202320	720	0	-0.0	0.4
20151130	4400890	12000230	720	0	0.2	0.6
20151130	4400891	12007220	720	0	-0.1	0.4
20151112	4400892	60018400	271	0	0.0	0.6
20151130	6200513	61665360	720	0	0.1	0.5
20151130	6200516	11475100	720	0	0.3	0.4
20151123	6200536	11599570	535	0	0.3	0.7
20151130	6200539	60891140	720	0	-0.3	0.8
20151130	6200552	11797240	719	0	0.2	0.6
20151130	6200553	11165650	720	0	-0.1	0.6
20151130	6200554	62952460	588	0	0.6	0.8
20151130	6200555	61515850	720	0	0.5	0.7
20151130	6200556	61510860	659	0	0.7	0.5
20151130	6200557	62328340	683	0	-0.0	0.7
20151130	6200681	11168640	720	2	-0.1	1.2
20151130	6200695	60408990	720	0	0.2	0.5
20151130	6200713	11246980	696	0	-0.2	0.5
20151130	6200714	11240980	718	0	-0.2	0.4
20151130	6200940	60203850	720	0	-0.1	0.4
20151130	6200941	60207590	720	0	-0.1	0.4
20151117	6300640	60172710	395	6	-0.3	1.4
20151130	6300645	60892150	688	0	-0.3	0.4
20151130	6400519	61518850	720	0	-0.1	0.5
20151130	6400521	11470030	720	0	-0.1	0.5
20151130	6400522	61511870	715	0	-0.2	0.5
20151125	6400523	61510870	565	1	0.2	1.9
20151130	6400524	61619040	720	0	-0.8	0.7
20151130	6400525	60175710	654	7	-0.5	2.3
20151130	6400526	61611070	719	0	0.2	0.6
20151115	6400527	61514840	349	0	0.7	0.4
20151130	6400528	61471310	720	0	0.3	0.7
20151130	6400529	11027150	720	0	-0.4	1.5
20151130	6400530	61470290	719	0	0.3	0.4
20151130	6400547	61473300	720	0	0.2	0.5
20151130	6400549	60898120	720	0	-0.4	0.7
20151124	6400550	11463700	565	12	-0.2	1.6
20151130	6400551	11795230	717	0	0.8	0.7
20151109	6400552	10822640	206	31	-1.0	2.5
20151130	6400553	62954270	720	0	-0.1	0.7
20151130	6400554	62958280	720	0	0.3	0.6
20151130	6400555	62955280	182	0	0.2	0.5
20151130	6400560	62956270	182	0	0.2	0.5
20151130	6400606	61515870	654	0	0.3	0.7
20151128	6400615	60173700	118	3	-1.3	3.8
20151130	6400621	61614070	720	0	-0.1	0.5
20151130	6400622	60172810	720	0	0.0	0.4
20151130	6400623	11470040	720	0	-0.5	1.4
20151130	6400666	60179710	720	0	-0.1	2.1
20151130	6400667	61615060	674	0	-0.5	0.8

E-SURFMAR DB Monthly Report November 2015

20151130	6400668	60177860	432	82	0.3	1.7
20151124	6400692	60172720	536	42	0.4	1.1
20151130	6500511	62857900	225	109	2.8	2.5
20151130	6500512	62951440	488	0	0.8	3.4
20151114	6500513	62953460	312	0	1.0	0.6
20151130	6500514	62954450	720	0	0.3	0.9
20151130	6500515	62858710	350	8	0.7	1.2
20151130	6500516	62954440	720	63	-0.1	1.3
20151104	6500517	62957440	73	0	0.9	0.3
20151130	6500596	61511850	720	0	0.2	0.7
20151130	6500599	62326370	720	0	0.1	0.6
20151130	6500601	62320360	720	0	0.2	0.5
20151130	6500602	62323360	720	0	-0.3	0.6
20151130	6500603	62959440	720	6	0.4	1.0

Air Pressure (hPa), moored buoys, November 2015

Datend	WMO	Telcom	Recvd	GE	Bias	Std
20151130	1300131		719	0	0.4	0.7
20151130	6100001		708	1	0.2	0.6
20151130	6100002		717	0	0.0	0.6
20151130	6100196		718	0	0.2	0.8
20151130	6100197		720	0	-0.0	0.6
20151130	6100198		350	0	0.3	0.7
20151130	6100280		693	63	-0.4	3.0
20151130	6100281		707	0	0.2	0.8
20151130	6100417		671	0	0.4	0.7
20151128	6100430		645	0	0.4	0.7
20151104	6101001		26	0	0.3	0.5
20151130	6101003		155	0	0.0	0.6
20151130	6200001		720	0	0.2	0.5
20151130	6200024		719	0	0.4	0.7
20151130	6200025		497	0	0.4	0.7
20151130	6200027		230	0	0.2	0.6
20151130	6200029		720	0	0.1	0.6
20151130	6200030		704	0	0.1	0.6
20151130	6200081		720	0	0.0	0.7
20151130	6200082		719	0	0.7	0.6
20151130	6200083		586	0	0.3	0.6
20151130	6200084		709	0	-0.1	2.4
20151130	6200085		713	0	0.3	0.7
20151130	6200086		662	0	-0.5	0.8
20151130	6200087		713	0	-0.5	0.8
20151130	6200091		720	0	-0.2	0.9
20151130	6200092		720	0	0.1	0.7
20151130	6200093		719	0	0.4	1.1
20151130	6200094		719	0	-0.3	0.8
20151130	6200095		699	2	-0.2	1.1
20151130	6200105		678	0	-0.0	0.8
20151130	6200163		719	0	0.1	0.5
20151130	6400045		705	0	0.0	0.8
20151130	6400046		720	0	-0.1	0.8

Air Temperature (C), moored buoys, November 2015

Datend	WMO	Telcom	Recvd	GE	Bias	Std
20151130	1300131		719	0	0.8	0.6
20151130	6100001		708	0	-0.3	0.8
20151130	6100002		717	0	-0.0	0.7
20151130	6100196		718	0	-0.3	0.7
20151130	6100197		720	0	0.8	0.6
20151130	6100198		350	0	-0.6	0.8
20151130	6100280		693	0	0.0	1.7
20151130	6100281		707	0	0.2	0.7
20151130	6100417		671	0	-0.1	0.5
20151128	6100430		645	0	1.2	0.8
20151104	6101001		26	0	0.2	0.8
20151130	6101008		179	0	0.8	1.1
20151130	6200001		720	0	-0.1	0.5
20151130	6200024		719	0	0.4	0.9
20151130	6200025		497	0	-0.1	0.8

E-SURFMAR DB Monthly Report November 2015

20151130	6200029	720	0	-0.1	0.6
20151130	6200030	704	0	-0.7	0.5
20151130	6200081	720	0	-0.2	0.6
20151130	6200082	719	0	0.1	0.6
20151130	6200083	586	0	0.1	0.6
20151130	6200084	587	0	2.0	3.8
20151130	6200085	713	0	-0.2	0.8
20151130	6200086	662	1	-0.5	0.8
20151130	6200087	712	0	-0.6	0.8
20151130	6200091	720	0	-0.1	0.7
20151130	6200092	720	0	-0.1	0.6
20151130	6200093	719	0	-0.3	0.7
20151130	6200094	719	0	-0.0	0.5
20151129	6200095	672	0	-0.7	0.7
20151130	6200105	678	0	-0.3	0.8
20151130	6200163	719	0	-0.1	0.5
20151130	6400045	720	0	-0.5	0.7
20151130	6400046	720	0	-0.7	0.7
20151130	6600021	714	0	0.0	0.6
20151130	6600022	673	0	0.4	0.9
20151130	6600024	632	0	0.4	0.7

Wind direction (deg.), moored buoys, November 2015

Datend	WMO	Telcom	Recvd	GE	Bias	Std
20151130	1300131		718	6	3	22
20151130	6100001		708	67	-2	31
20151130	6100002		712	44	-8	28
20151130	6100196		706	33	-13	26
20151118	6100197		415	87	-32	47
20151130	6100198		314	29	-7	34
20151130	6100280		687	54	-9	36
20151130	6100281		602	33	2	32
20151130	6100417		664	12	-3	27
20151128	6100430		633	51	-9	30
20151104	6101001		26	0	-13	8
20151130	6101003		155	12	-4	35
20151130	6101008		180	35	83	60
20151130	6200001		720	6	-2	20
20151130	6200024		701	40	5	30
20151130	6200025		488	20	-6	31
20151130	6200027		210	4	-0	27
20151130	6200029		719	4	-2	13
20151130	6200081		720	4	-6	14
20151130	6200082		663	11	0	20
20151130	6200083		575	6	-0	22
20151130	6200084		693	15	11	23
20151130	6200085		701	2	-1	17
20151130	6200086		659	3	7	16
20151130	6200087		713	4	-2	17
20151130	6200091		720	10	2	19
20151130	6200092		720	2	4	14
20151130	6200093		718	2	8	14
20151130	6200094		719	8	-1	13
20151129	6200095		646	2	-5	14
20151130	6200105		622	3	0	16
20151130	6200163		718	0	-0	12
20151130	6200442		719	2	6	12
20151130	6400046		720	3	5	17
20151130	6600021		713	4	-2	16
20151130	6600022		672	5	-0	19
20151130	6600024		632	6	3	16

Wind speed rate, moored buoys, November 2015

Datend	WMO	Telcom	Recvd	GE	Rate	Err
20151130	1300131		718	0	0.9	2.2
20151130	6100001		708	1	1.7	3.0
20151130	6100002		712	17	1.0	1.8
20151130	6100196		706	0	0.9	1.9
20151118	6100197		415	0	1.0	1.3

E-SURFMAR DB Monthly Report November 2015

20151130	6100198	314	0	0.9	2.1
20151130	6100280	687	8	1.5	3.1
20151130	6100281	602	0	1.1	2.2
20151130	6100417	664	0	1.0	1.3
20151128	6100430	633	0	1.0	1.8
20151104	6101001	26	0	0.9	1.6
20151130	6101003	155	2	0.8	2.5
20151130	6101008	180	0	0.0	0.0
20151130	6200001	720	0	1.0	1.3
20151130	6200024	701	0	1.1	1.9
20151130	6200025	488	0	0.8	2.1
20151130	6200027	210	0	0.9	1.5
20151130	6200029	719	0	1.0	1.6
20151130	6200081	720	0	1.0	1.5
20151130	6200082	663	0	0.8	1.7
20151130	6200083	575	2	0.9	1.3
20151130	6200084	693	0	0.9	1.8
20151130	6200085	701	1	0.7	1.9
20151130	6200086	658	2	1.1	1.5
20151130	6200087	713	4	1.0	2.2
20151130	6200091	720	0	1.0	2.0
20151130	6200092	720	1	0.9	1.5
20151130	6200093	718	0	0.9	1.8
20151130	6200094	719	0	0.9	1.6
20151129	6200095	646	1	1.0	1.9
20151130	6200105	622	0	1.0	2.2
20151130	6200163	718	0	1.0	1.2
20151130	6200442	719	0	1.0	1.8
20151130	6400046	720	0	1.0	1.8
20151130	6600021	713	0	1.2	1.6
20151130	6600022	672	0	1.2	1.8
20151130	6600024	632	0	1.2	1.5

Comments on QC statistics :

Air pressure

1. Metocean buoy WMO **6500516** reported wrong pressure values at the beginning of the month.
2. Metocean buoys WMO **4400547**, **4400872**, **6400525**, **6400666**, **6400668** and **6500512** temporarily reported wrong pressure values during November for unknown reasons.
3. Metocean buoy WMO **4400875**, **6400523**, **6400529**, **6400550** and **6500511** reported wrong pressure values before their transmission was stopped.
4. Metocean buoy WMO **6400615** and **6400692** reported wrong pressure values before they stopped to emit on 24th and 28th of November.
5. Metocean buoy WMO **4400770**, **6300640** and **6400552** reported wrong pressure values before they ashored and stop to emit.
6. Spanish moored buoy WMO **6100280** reported wrong pressure values since the 15th of November.
7. Eumetnet Spanish moored buoy WMO **6200084** reported wrong pressure values until 08th of November.

Air Temperature

1. Since the beginning of the month Eumetnet Spanish moored buoy WMO **6200084** reported air temperature values with a systematic bias of about 1 or 2 °C.

E-SURFMAR DB Monthly Report November 2015

Wind

1. Spanish moored buoy WMO **6100197** reported wrong wind direction data before it was stopped on 18th of November..
2. Greek moored buoy WMO **6101008** continued to report abnormal calm winds onto the GTS.

Monthly QC statistics and other data quality control tools are available on line at :

<http://www.meteo.shom.fr/qctools/>

The working area of the E-SURFMAR website is open at <http://esurfmar.meteo.fr/wikisurf-wa/> . Ask the E-SURFMAR Programme Manager Pierre.Blouch@meteo.fr for the password in case you forgot it. Graphs of system performances June be displayed/downloaded at http://esurfmar.meteo.fr/doc/r/surfmar/others/e-surfmar_monitoring.pdf.