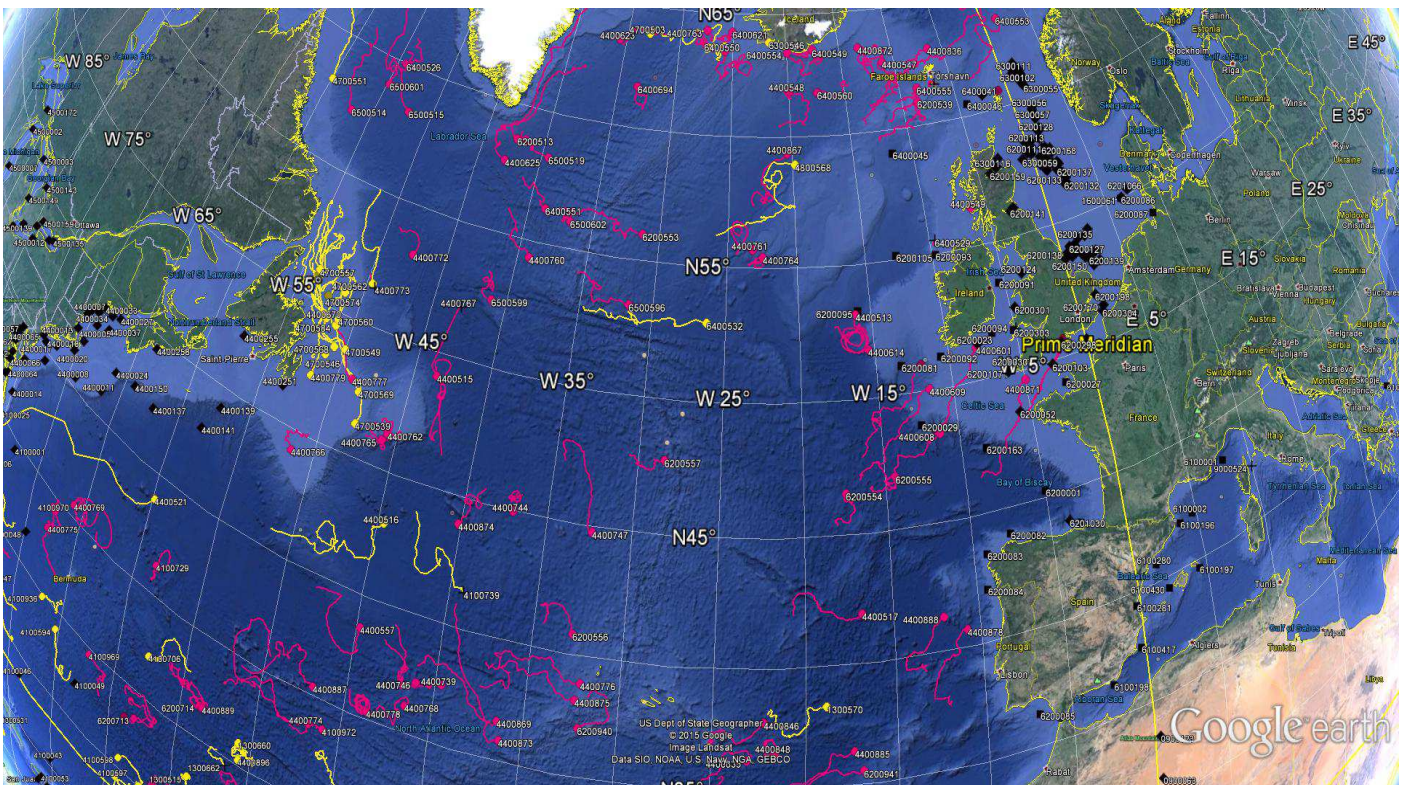


DATA BUOY MONTHLY REPORT

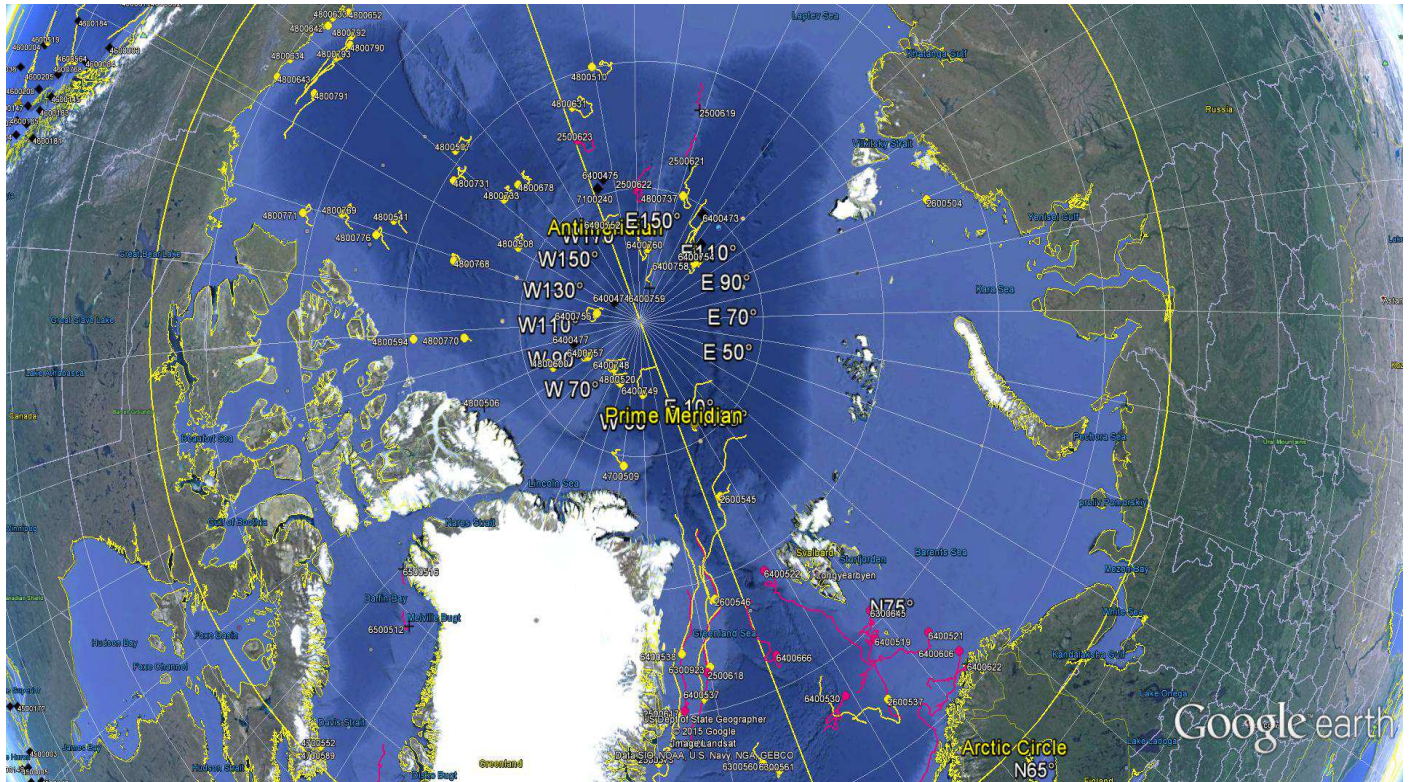
December 2015



*December 2015 : Operating data buoys in the North Atlantic
Drifting buoy trajectories : E-SURFMAR (red), others (yellow)
Moored buoy positions (black)*

*Most recent trajectories may be seen at:
http://www.meteo.shom.fr/cartographie/data/kml/MeteoFrance_buoys_map_15.kmz*

E-SURFMAR DB Monthly Report December 2015



December 2015
Drifting buoy trajectories in Arctic Ocean and adjacent seas : E-SURFMAR (red), others (yellow)

DRIFTING BUOYS

Network status

By the end of December, **127 Drifting buoys**, reporting air pressure onto the GTS, were in operation in the frame of E-SURFMAR. Out of these, 94 were E-SURFMAR funded Iridium SVP-Bs, including 4 in the Arctic, 7 in AtlantOS activities and 8 HRSST-2 buoys. The remaining buoys were: 33 drifters owned by NOAA and upgraded with barometers by E-SURFMAR.

Information about the availability of buoys for future deployments may be get from the E-SURFMAR wikisite (working area) at: http://esurfmar.meteo.fr/wikisurf-wa/index.php/Availability_of_drifting_buoys

Besides E-SURFMAR buoys, 66 drifting buoys were reporting at least air pressure observations from the EUMETNET area of interest.

Drifting buoys - New deployments

WMO	Telcom	Typ	Ow	Dep_Date	DepLat	DepLon	From	Comment
4400772	62950440	MSB	EU	20151221	54.0	-49.1	Reykjavik	Skogafoss
4400773	11595650	MSB	EU	20151222	52.0	-50.2	Reykjavik	Skogafoss
4400777	62854730	MSB	EU	20151222	50.0	-51.1	Reykjavik	Skogafoss
4400779	62951460	MSB	EU	20151222	48.1	-52.0	Reykjavik	Skogafoss
6400694	11548420	MSB	UP	20151219	61.5	-33.0	Reykjavik	Skogafoss
6500519	61666340	MSB	EU	20151220	59.1	-41.4	Reykjavik	Skogafoss

Operating drifting buoys in North Atlantic by the end of the month

WMO	Telcom	Typ	Ow	nobs	Wi	AT	AP	dP	ST	Wa	Ws	Dr	Sb	U	SS	O	Start_end	Lat	Lon	Age
1300868	11686410	MSB	EU	744	-	-	X	-	X	-	-	X	-	-	-	T	0112-3112	33.63	-12.30	406
1300869	11688410	MSB	EU	744	-	-	X	-	X	-	-	X	-	-	-	T	0112-3112	22.84	-41.97	404
1300870	61512860	MSB	EU	744	-	-	X	-	X	-	-	X	-	-	-	T	0112-3112	31.96	-10.91	294
1300871	61516870	MSB	EU	744	-	-	X	-	X	-	-	X	-	-	-	T	0112-3112	29.42	-36.38	292
1300872	61611050	MSB	EU	744	-	-	X	-	X	-	-	X	-	-	-	T	0112-3112	27.24	-29.77	293
2500617	61767070	MSB	EU	746	-	-	X	-	X	-	-	-	-	-	-	T	0112-3112	75.19	-15.28	467
2500618	11020180	MSB	EU	744	-	-	X	-	-	-	-	X	-	-	-	T	0112-3112	76.55	-10.37	255
2500622	62850900	MSB	EU	744	-	-	X	-	S	-	-	-	-	-	-	T	0112-3112	85.00	159.97	116
2500623	62955110	MSB	EU	744	-	-	X	-	S	-	-	-	-	-	-	T	0112-3112	82.61	179.18	109
4100729	62321360	MSB	EU	744	-	-	X	-	X	-	-	X	-	-	-	T	0112-3112	36.43	-58.38	219
4100730	62326350	MSB	EU	744	-	-	X	-	X	-	-	X	-	-	-	T	0112-3112	29.50	-78.41	218
4100731	62329360	MSB	EU	744	-	-	X	-	X	-	-	X	-	-	-	T	0112-3112	25.90	-56.19	224
4100970	60213790	PSB	UP	744	-	-	X	-	X	-	-	X	-	-	-	T	0112-3112	34.53	-67.26	875
4100972	60217780	PSB	UP	743	-	-	X	-	X	-	-	X	-	-	-	T	0112-3112	33.81	-45.90	875
4400513	61475450	DSB	UP	744	-	-	X	-	X	-	-	X	-	-	-	T	0112-3112	53.15	-16.11	298
4400515	61476450	DSB	UP	744	-	-	X	-	X	-	-	X	-	-	-	T	0112-3112	49.14	-43.38	300
4400517	61477390	DSB	UP	744	-	-	X	-	X	-	-	X	-	-	-	T	0112-3112	41.98	-16.83	297
4400546	11160640	MSB	EU	744	-	-	X	-	X	-	-	X	-	-	-	T	0112-3112	27.66	-48.86	1017
4400547	60173710	MSB	EU	744	-	-	X	-	X	-	-	X	-	-	-	T	0112-3112	62.75	-11.12	508
4400548	11799230	MSB	E2	744	-	-	X	-	X	-	-	X	-	-	-	T	0112-3112	61.84	-19.95	508
4400549	60896130	MSB	EU	744	-	-	X	-	-	-	-	X	-	-	-	T	0112-3112	56.50	-6.31	481
4400551	60892140	MSB	EU	744	-	-	X	-	X	-	-	X	-	-	-	T	0112-3112	64.66	0.50	481
4400557	61568540	DSB	UP	743	-	-	X	-	X	-	-	X	-	-	-	T	0112-3112	38.72	-44.70	170
4400601	60890150	MSB	EU	744	-	-	X	-	X	-	-	X	-	-	-	T	0112-3112	51.26	-8.06	480
4400608	11093800	MSB	E2	744	-	-	X	-	S	-	-	X	-	-	-	T	0112-3112	48.37	-11.31	448
4400609	61613050	MSB	EU	744	-	-	X	-	X	-	-	X	-	-	-	T	0112-3112	50.07	-11.63	330
4400613	11475040	MSB	EU	744	-	-	X	-	X	-	-	X	-	-	-	T	0112-3112	25.27	-37.91	1031
4400614	61661340	MSB	EU	744	-	-	X	-	X	-	-	X	-	-	-	T	0112-3112	51.82	-15.46	611
4400623	61669330	MSB	EU	744	-	-	X	-	X	-	-	X	-	-	-	T	0112-3112	63.45	-35.64	329
4400624	11341110	YSB	EU	736	-	-	X	-	X	-	-	X	-	-	-	T	0112-3112	24.67	-38.31	1116
4400625	61668340	MSB	EU	724	-	-	X	-	X	-	-	X	-	-	-	T	0112-3112	57.74	-42.78	609
4400739	61516840	MSB	EU	744	-	-	X	-	X	-	-	X	-	-	-	T	0112-3112	37.58	-39.61	577

E-SURFMAR DB Monthly Report December 2015

4400740	11883820	PSB	UP	744	-	-	X	-	X	-	-	X	-	-	-	T	0112-3112	28.36	-58.69	1272
4400744	62953450	MSB	EU	744	-	-	X	-	X	-	-	X	-	-	-	T	0112-3112	45.00	-37.04	158
4400746	62850730	MSB	EU	744	-	-	X	-	X	-	-	X	-	-	-	T	0112-3112	37.35	-41.04	154
4400747	62327370	MSB	EU	744	-	-	X	-	X	-	-	X	-	-	-	T	0112-3112	44.80	-32.30	60
4400760	61662360	MSB	EU	744	-	-	X	-	X	-	-	X	-	-	-	T	0112-3112	54.38	-39.10	329
4400761	61669320	MSB	EU	744	-	-	X	-	X	-	-	X	-	-	-	T	0112-3112	55.70	-23.20	329
4400762	61664310	MSB	EU	744	-	-	X	-	X	-	-	X	-	-	-	T	0112-3112	46.41	-45.62	328
4400763	61667330	MSB	EU	741	-	-	X	-	X	-	-	X	-	-	-	T	0112-3112	64.24	-27.49	292
4400764	61662330	MSB	EU	744	-	-	X	-	X	-	-	X	-	-	-	T	0112-3112	55.41	-22.46	291
4400765	62325370	MSB	EU	710	-	-	X	-	X	-	-	X	-	-	-	T	0112-3112	46.11	-45.88	59
4400766	62326340	MSB	EU	744	-	-	X	-	X	-	-	X	-	-	-	T	0112-3112	44.24	-51.51	59
4400768	62322360	MSB	EU	744	-	-	X	-	X	-	-	X	-	-	-	T	0112-3112	36.24	-41.48	223
4400769	62328360	MSB	EU	744	-	-	X	-	X	-	-	X	-	-	-	T	0112-3112	35.66	-65.84	224
4400772	62950440	MSB	EU	248	-	-	X	-	X	-	-	X	-	-	-	T	2112-3112	53.17	-47.38	11
4400774	61477400	DSB	UP	744	-	-	X	-	X	-	-	X	-	-	-	T	0112-3112	33.77	-46.74	411
4400775	61476400	DSB	UP	743	-	-	X	-	X	-	-	X	-	-	-	T	0112-3112	33.40	-67.64	411
4400776	61474410	DSB	UP	743	-	-	X	-	X	-	-	X	-	-	-	T	0112-3112	38.93	-32.12	410
4400777	62854730	MSB	EU	228	-	-	X	-	X	-	-	X	-	-	-	T	2212-3112	47.85	-48.87	10
4400778	61475430	DSB	UP	744	-	-	X	-	X	-	-	X	-	-	-	T	0112-3112	35.39	-43.56	409
4400779	62951460	MSB	EU	208	-	-	X	-	X	-	-	X	-	-	-	T	2312-3112	47.28	-51.72	10
4400835	60218770	PSB	UP	744	-	-	X	-	X	-	-	X	-	-	-	T	0112-3112	36.31	-23.11	668
4400836	60218680	PSB	UP	744	-	-	X	-	X	-	-	X	-	-	-	T	0112-3112	63.02	-6.44	668
4400837	60209490	PSB	UP	744	-	-	X	-	X	-	-	X	-	-	-	T	0112-3112	23.60	-33.81	668
4400839	60205090	PSB	UP	744	-	-	X	-	X	-	-	X	-	-	-	T	0112-3112	32.10	-19.25	668
4400846	60441290	DSB	UP	744	-	-	X	-	X	-	-	X	-	-	-	T	0112-3112	37.88	-22.25	705
4400848	60448280	DSB	UP	744	-	-	X	-	X	-	-	X	-	-	-	T	0112-3112	36.64	-21.61	704
4400863	60211690	PSB	UP	744	-	-	X	-	X	-	-	X	-	-	-	T	0112-3112	27.89	-51.65	899
4400866	11793240	MSB	E2	744	-	-	X	-	X	-	-	X	-	-	-	T	0112-3112	66.95	2.24	559
4400867	11593590	MSB	EU	744	-	-	X	-	X	-	-	X	-	-	-	T	0112-3112	59.37	-20.40	557
4400868	11794230	MSB	E2	744	-	-	X	-	X	-	-	X	-	-	-	T	0112-3112	24.32	-47.92	968
4400869	61615050	MSB	EU	744	-	-	X	-	X	-	-	X	-	-	-	T	0112-3112	36.73	-36.37	149
4400871	11790240	MSB	E2	744	-	-	X	-	X	-	-	X	-	-	-	T	0112-3112	49.64	-5.02	553
4400872	60209290	MSB	EU	744	-	-	X	-	X	-	-	X	-	-	-	T	0112-3112	63.45	-13.18	553
4400873	61612060	MSB	EU	744	-	-	X	-	X	-	-	X	-	-	-	T	0112-3112	35.95	-36.17	150
4400874	62858910	MSB	EU	744	-	-	X	-	X	-	-	X	-	-	-	T	0112-3112	43.99	-40.12	153
4400878	60528170	PSB	UP	744	-	-	X	-	X	-	-	X	-	-	-	T	0112-3112	40.71	-10.82	696
4400880	60656880	PSB	UP	744	-	-	X	-	X	-	-	X	-	-	-	T	0112-3112	51.03	-12.00	697
4400885	60218780	PSB	UP	744	-	-	X	-	X	-	-	X	-	-	-	T	0112-3112	36.49	-17.41	581
4400887	60251440	PSB	UP	744	-	-	X	-	X	-	-	X	-	-	-	T	0112-3112	35.45	-46.83	583
4400888	60359010	PSB	UP	744	-	-	X	-	X	-	-	X	-	-	-	T	0112-3112	41.40	-12.15	581
4400889	60202320	PSB	UP	744	-	-	X	-	X	-	-	X	-	-	-	T	0112-3112	31.74	-53.37	582
4400890	12000230	PSP	UP	744	-	-	X	-	X	-	-	X	-	-	-	T	0112-3112	29.38	-72.80	581
4400891	12007220	PSB	UP	744	-	-	X	-	X	-	-	X	-	-	-	T	0112-3112	27.51	-52.12	579
6200513	61665360	MSB	EU	744	-	-	X	-	X	-	-	X	-	-	-	T	0112-3112	58.66	-42.27	330
6200516	11475100	MSB	EU	744	-	-	X	-	X	-	-	X	-	-	-	T	0112-3112	22.93	-52.64	969
6200539	60891140	MSB	EU	744	-	-	X	-	X	-	-	X	-	-	-	T	0112-3112	60.95	-8.66	483
6200552	11797240	MSB	E2	744	-	-	X	-	S	-	-	X	-	-	-	T	0112-3112	50.69	-1.76	448
6200553	11165650	MSB	EU	744	-	-	X	-	X	-	-	X	-	-	-	T	0112-3112	55.99	-31.24	1013
6200554	62952460	MSB	EU	666	-	-	X	-	X	-	-	X	-	-	-	T	0112-3112	46.58	-17.48	151
6200555	61515850	MSB	EU	744	-	-	X	-	X	-	-	X	-	-	-	T	0112-3112	47.00	-14.39	152
6200556	61510860	MSB	EU	744	-	-	X	-	X	-	-	X	-	-	-	T	0112-3112	40.82	-32.79	151
6200557	62328340	MSB	EU	744	-	-	X	-	X	-	-	X	-	-	-	T	0112-3112	47.77	-28.41	61
6200695	60408990	MSB	E2	744	-	-	X	-	X	-	-	X	-	-	-	T	0112-3112	25.29	-48.67	969
6200713	11246980	YSB	EU	738	-	-	X	-	X	-	-	X	-	-	-	T	0112-3112	28.69	-57.93	1115
6200714	11240980	YSB	EU	742	-	-	X	-	X	-	-	X	-	-	-	T	0112-3112	31.76	-53.58	1112
6200940	60203850	PSB	UP	744	-	-	X	-	X	-	-	X	-	-	-	T	0112-3112	37.10	-32.05	578
6200941	61516840	PSB	UP	744	-	-	X	-	X	-	-	X	-	-	-	T	0112-3112	35.63	-16.92	578
6400519	61518850	MSB	EU	744	-	-	X	-	X	-	-	X	-	-	-	T	0112-3112	74.58	17.10	348
6400521	11470030	MSB	EU	744	-	-	X	-	X	-	-	X	-	-	-	T	0112-3112	73.15	23.65	963
6400522	61511870	MSB	EU	744	-	-	X	-	X	-	-	X	-	-	-	T	0112-3112	79.45	6.63	496
6400523	61510870	MSB	EU	699	-	-	X	-	X	-	-	X	-	-	-	T	0112-3112	69.28	0.23	418
6400524	61619040	MSB	EU	744	-	-	X	-	X	-	-	X	-	-	-	T	0112-3112	66.92	13.42	418
6400525	60175710	MSB	EU	744	-	-	X	-	X	-	-	X	-	-	-	T	0112-3112	67.97	-20.43	867
6400526	61611070	MSB	EU	744	-	-	X	-	X	-	-	X	-	-	-	T	0112-3112	59.94	-54.04	416
6400528	61471310	MSB	UP	744	-	-	X	-	X	-	-	X	-	-	-	T	0112-3112	65.14	8.77	198
6400530	61470290	DSB	UP	739	-	-	X	-	X	-	-	X	-	-	-	T	0112-3112	73.43	8.99	198
6400547	61473300	DSB	UP	744	-	-	X	-	X	-	-	X	-	-	-	T	0112-3112	68.37	6.34	197
6400549	60898120	MSB	EU	744	-	-	X	-	X	-	-	X	-	-	-	T	0112-3112	63.49	-17.55	195
6400550	11463700	MSB	UP	744	-	-	X	-	X	-	-	X	-	-	-	T	0112-3112	63.42	-25.75	192
6400551	11795230	MSB	E2	737	-	-	X	-	X	-	-	X	-	-	-	T	0112-3112	56.31	-38.71	192
6400553	62954270	MSB	EU	744	-	-	X	-	X	-	-	X	-	-	-	T	0112-3112	63.57	1.51	111
6400554	62958280	MSB	EU	744	-	-	X	-	X	-	-	X	-	-	-	T	0112-3112	63.41	-19.92	110
6400555	62955280	MSB	EU	744	-	-	X	-	X	-	-	X	-	-	-	T	0112-3112	61.50	-8.43	41
6400560	62956270	MSB	EU	744	-	-	X	-	X	-	-	X	-	-	-	T	0112-3112	61.73	-17.47	41
6400606	61515870	MSB	EU	721	-	-	X	-	X	-	-	X	-	-	-	T	0112-3112	71.58	24.90	344
6400621	61614070	MSB	EU	744	-	-	X	-	X	-	-	X	-	-	-	T	0112-3112	64.23	-25.08	278

E-SURFMAR DB Monthly Report December 2015

6400623	11470040	MSB	EU	744	-	-	X	-	X	-	-	X	-	-	-	T	0112-3112	70.22	-8.01	964
6400666	60179710	MSB	EU	744	-	-	X	-	X	-	-	X	-	-	-	T	0112-3112	76.31	2.02	764
6400667	61615060	MSB	EU	688	-	-	X	-	-	-	-	X	-	-	-	T	0112-3112	60.70	-1.00	736
6400668	60177860	MSB	EU	744	-	-	X	-	X	-	-	X	-	-	-	T	0112-3112	66.97	-30.91	740
6400694	11548420	MSB	UP	255	-	-	X	-	X	-	-	X	-	-	-	T	2112-3112	61.63	-33.27	13
6500514	62954450	MSB	EU	744	-	-	X	-	X	-	-	X	-	-	-	T	0112-3112	57.33	-56.80	161
6500519	61666340	MSB	EU	255	-	-	X	-	X	-	-	X	-	-	-	T	2112-3112	58.24	-39.40	12
6500596	61511850	MSB	EU	744	-	-	X	-	X	-	-	X	-	-	-	T	0112-3112	53.32	-31.63	561
6500599	62326370	MSB	EU	742	-	-	X	-	X	-	-	X	-	-	-	T	0112-3112	52.48	-41.02	236
6500601	62320360	MSB	EU	744	-	-	X	-	X	-	-	X	-	-	-	T	0112-3112	58.95	-54.66	233
6500602	62323360	MSB	EU	744	-	-	X	-	X	-	-	X	-	-	-	T	0112-3112	56.03	-36.68	233
6500603	62959440	MSB	EU	744	-	-	X	-	X	-	-	X	-	-	-	T	0112-3112	68.01	-53.72	110

Operating AtlantOS drifting buoys by the end of the month

WMO	Telcom	Typ	Ow	nobs	Wi	AT	AP	dP	ST	Wa	Ws	Dr	Sb	U	SS	O	Start_end	Lat	Lon	Age
1500681	61661310	MSB	EU	744	-	-	X	-	X	-	-	X	-	-	-	T	0112-3112	-14.39	-17.81	258
1500682	61663300	MSB	EU	744	-	-	X	-	X	-	-	X	-	-	-	T	0112-3112	-11.98	-6.33	259
1500683	61663370	MSB	EU	744	-	-	X	-	X	-	-	X	-	-	-	T	0112-3112	-11.07	-34.84	260
1500684	62328350	MSB	EU	744	-	-	X	-	X	-	-	X	-	-	-	T	0112-3112	-6.96	-29.94	259
1500685	62854900	MSB	EU	744	-	-	X	-	X	-	-	X	-	-	-	T	0112-3112	-11.77	-10.79	126
1500686	62959110	MSB	EU	744	-	-	X	-	X	-	-	X	-	-	-	T	0112-3112	-7.86	-17.71	126
1500688	62958430	MSB	EU	723	-	-	X	-	X	-	-	X	-	-	-	T	0112-3112	-6.66	-8.84	126

Drifting buoys which ceased to be operational

WMO	Telcom	Typ	Ow	End_Date	Lat	Lon	Age	Cause
2500619	62856890	MSB	EU	20151222	81.6	141.3	120	Unknown (Frozen in ice?)
2500620	61760090	MSB	EU	20151207	73.7	-15.1	437	Unknown (Frozen in ice?)
2500621	62956120	MSB	EU	20151222	83.8	139.2	119	Unknown (Frozen in ice?)
4400620	61667370	MSB	EU	20151227	61.5	-6.7	606	Ashore in Feroe Island
4400767	62324350	MSB	EU	20151219	51.9	-42.9	48	Unknown
6200681	11168640	MSB	EU	20151229	24.9	-38.5	1137	Faded (Battery empty)
6400529	11027150	MSB	EU	20151201	55.5	-9.6	169	AP and ST measurements failed
6400622	60172810	MSB	EU	20151226	70.9	24.5	863	Unknown
6500512	62951440	MSB	EU	20151210	74.6	-63.0	86	Unknown (Frozen in ice?)
6500516	62954440	MSB	EU	20151209	76.1	-69.6	106	Unknown (Frozen in ice?)

Non-operating drifting buoys reporting GTS data

WMO	Telcom	Typ	Ow	nobs	Wi	AT	AP	dP	ST	Wa	Ws	Dr	Sb	U	SS	O	Start_end	Lat	Lon	Age
2500624	60247420	MSB	EU	744	-	-	-	-	X	-	-	-	-	-	-	T	0112-3112	66.52	-9.08	853
4100969	60213780	PSB	UP	744	-	-	S	-	X	-	-	X	-	-	-	T	0112-3112	29.77	-62.05	876
4400604	11794240	MSB	E2	743	-	-	-	-	X	-	-	X	-	-	-	T	0112-3112	46.13	-28.10	450
4400745	62956440	MSB	EU	743	-	-	-	-	X	-	-	X	-	-	-	T	0112-3112	39.88	-30.69	155
4400875	61616040	MSB	EU	744	-	-	S	-	X	-	-	X	-	-	-	T	0112-3112	38.23	-32.34	150
6300645	60892150	MSB	EU	719	-	-	S	-	X	-	-	X	-	-	-	T	0112-3112	75.58	19.22	70
6500511	62857900	MSB	EU	697	-	-	-	-	X	-	-	X	-	-	-	T	0112-3112	65.64	-56.19	109
6500515	62858710	MSB	EU	744	-	-	S	-	X	-	-	X	-	-	-	T	0112-3112	58.25	-51.95	137
6500595	11595570	MSB	EU	744	-	-	-	-	X	-	-	X	-	-	-	T	0112-3112	53.46	-17.95	563

Other operating drifting buoys inside the EUMETNET area by the end of the month

WMO	Telcom	Owner	nobs	Wi	AT	AP	dP	ST	Wa	Ws	Dr	Sb	U	SS	O	Start_end	Lat	Lon
1300515	114951	AOML	716	-	-	X	-	X	-	-	X	-	-	-	L	0112-3112	27.85	-53.81
1300517	114943	AOML	711	-	-	X	-	X	-	-	X	-	-	-	L	0112-3112	16.06	-53.27
1300519	127004	AOML	712	-	-	X	X	X	-	-	X	-	-	-	L	0112-3112	20.02	-44.30
1300530	114916	AOML	708	-	-	X	-	X	-	-	X	-	-	-	L	0112-3112	13.82	-23.68
1300569	114880	AOML	703	-	-	X	-	X	-	-	X	-	-	-	L	0112-3112	29.70	-33.97
1300570	116474	AOML	734	-	-	X	-	X	-	-	X	-	-	-	L	0112-3112	38.43	-18.89
1300572	127002	AOML	740	-	-	X	X	X	-	-	X	-	-	-	L	0112-3112	33.32	-24.73

E-SURFMAR DB Monthly Report December 2015

1300633	109491	AOML	733	-	-	X	X	X	-	-	X	-	-	-	L	0112-3112	30.80	-22.60
1300660	11022040	UKMO	744	-	-	X	-	X	-	-	X	-	-	-	T	0112-3112	31.19	-50.76
1300661	62325770	UKMO	736	-	-	X	-	-	-	-	X	-	-	-	T	0112-3112	16.39	-34.73
1300665	62327760	UKMO	744	-	-	X	-	S	-	-	X	-	-	-	T	0112-3112	24.94	-21.89
1500951	10450430	CMM	600	-	-	X	-	-	-	-	X	-	-	-	T	0112-3112	4.00	9.21
2100942	119223	UKMO	737	-	-	X	X	X	-	-	X	-	-	-	L	0112-3112	29.71	-44.12
2500540	137811	APL	744	-	-	X	X	X	-	-	-	-	-	-	L	0112-3112	66.53	-32.84
2500575	137812	APL	745	-	-	X	X	-	-	-	-	-	-	-	L	0112-3112	73.11	-19.95
2600537	61369210	IABP	692	-	-	X	X	X	-	-	X	-	-	-	O	0112-3112	72.25	13.73
2600545	62556750		66	-	X	X	X	-	-	-	-	-	-	-	O	0112-3112	82.77	4.70
2600546			706	-	X	X	X	-	-	-	S	-	-	-	O	0112-3112	79.25	-5.68
3100863	61611040	CMM	744	-	-	X	-	X	-	-	X	-	-	-	T	0112-3112	25.22	-57.14
4100564	109221	AOML	537	-	-	X	-	X	-	-	X	-	-	-	L	0112-3112	29.25	-35.44
4100594	127029	AOML	739	-	-	X	X	X	-	-	X	-	-	-	L	0112-3112	29.14	-65.22
4100597	61512840	AOML	744	-	-	X	-	X	-	-	X	-	-	-	T	0112-3112	24.53	-58.99
4100598	61610040	AOML	744	-	-	X	-	X	-	-	X	-	-	-	T	0112-3112	25.81	-58.83
4100635	61475300	CMM	744	-	-	X	-	X	-	-	X	-	-	-	T	0112-3112	20.95	-48.60
4100638	62955440	CMM	744	-	-	X	-	X	-	-	X	-	-	-	T	0112-3112	15.48	-54.74
4100706	11595580	AOML	744	-	-	X	-	X	-	-	X	-	-	-	T	0112-3112	32.27	-57.55
4100707	62957110	CMM	744	-	-	X	-	-	-	-	X	-	-	-	T	0112-3112	13.77	-61.05
4100708	62958100	CMM	744	-	-	X	-	X	-	-	X	-	-	-	T	0112-3112	13.68	-40.03
4100711	11477030	CMM	744	-	-	X	-	X	-	-	X	-	-	-	T	0112-3112	33.85	-26.30
4100936	109488	AOML	740	-	-	X	X	X	-	-	X	-	-	-	L	0112-3112	29.95	-66.87
4100975	109439	AOML	737	-	-	X	X	X	-	-	X	-	-	-	L	0112-3112	30.59	-23.57
4400516	114599	AOML	712	-	-	X	X	X	-	-	X	-	-	-	L	0112-3112	43.08	-44.56
4400521	133133	AOML	168	-	-	X	X	X	-	-	X	-	-	-	L	2512-3112	38.99	-59.73
4400558	123286	AOML	741	-	-	X	X	X	-	-	X	-	-	-	L	0112-3112	29.90	-42.86
4400670			677	-	-	X	X	X	-	-	X	-	-	-	O	0112-3112	49.59	-51.97
4400896	109438	AOML	743	-	-	X	X	X	-	-	X	-	-	-	L	0112-3112	30.36	-50.66
4700503	137813	APL	776	-	-	X	X	X	-	-	-	-	-	-	L	0112-3112	63.87	-32.93
4700509	62553800	IABP	705	-	X	X	X	-	-	-	S	-	-	-	O	0112-3112	84.63	-29.22
4700539			668	-	-	X	X	X	-	-	X	-	-	-	O	0112-3112	46.30	-47.85
4700540			677	-	-	X	X	X	-	-	X	-	-	-	O	0112-3112	50.40	-52.40
4700546			677	-	-	X	X	X	-	-	X	-	-	-	O	0112-3112	48.29	-51.21
4700549			679	-	-	X	X	X	-	-	X	-	-	-	O	0112-3112	48.79	-49.94
4700551		EC	717	-	-	X	X	S	-	-	-	-	-	-	O	0112-3112	58.07	-59.85
4700552		EC	672	-	-	X	X	X	-	-	S	-	-	-	O	0112-3112	67.39	-63.27
4700555			537	-	-	X	X	X	-	-	X	-	-	-	O	0812-3112	48.98	-52.57
4700557			485	-	-	X	X	X	-	-	-	-	-	-	O	0812-3112	51.17	-53.72
4700560			537	-	-	X	X	X	-	-	X	-	-	-	O	0812-3112	49.74	-51.11
4700562			667	-	-	X	X	X	-	-	X	-	-	-	O	0112-3112	51.56	-49.58
4700567			680	-	-	X	X	X	-	-	X	-	-	-	O	0112-3112	50.97	-53.66
4700568			680	-	-	X	X	X	-	-	X	-	-	-	O	0112-3112	48.71	-50.76
4700569			687	-	-	X	X	X	-	-	X	-	-	-	O	0112-3112	47.49	-48.20
4700574			486	-	-	X	X	X	-	-	-	-	-	-	O	0812-3112	50.80	-51.29
4700584			687	-	-	X	X	X	-	-	X	-	-	-	O	0112-3112	49.49	-51.13
4700589		EC	670	-	-	X	X	X	-	-	-	-	-	-	O	0112-3112	67.39	-63.30
4800520	132472	IABP	692	-	X	X	-	X	-	-	X	-	-	-	L	0112-3112	87.58	-41.52
4800568	61363210	IABP	663	-	-	X	X	X	-	-	X	-	-	-	O	0112-3112	58.93	-19.81
6300546	61361200	IABP	662	-	-	X	X	X	-	-	X	-	-	-	O	0112-3112	63.83	-21.59
6300560	60654120	AOML	743	-	-	X	-	X	-	-	X	-	-	-	L	0112-3112	72.34	-5.34
6300561	60654200	AOML	744	-	-	X	-	X	-	-	X	-	-	-	L	0112-3112	71.84	-3.52
6300923	62551770	IABP	706	-	X	X	X	-	-	-	S	-	-	-	O	0112-3112	76.75	-9.74
6400532	137804	DBCP	744	-	-	X	X	X	-	-	-	-	-	-	L	0112-3112	52.92	-26.28
6400537	62923840	IABP	235	S	X	X	X	X	-	-	S	-	X	-	O	0112-3112	75.57	-11.77
6400538	62554760	IABP	680	-	X	X	X	-	-	-	-	-	-	-	O	0112-3112	77.45	-14.48
6400748	62782480	AWI	774	-	X	X	X	X	-	-	S	-	-	-	O	0112-3112	87.95	-52.98
6400749	62784540	AWI	706	-	X	X	X	S	-	-	S	-	-	-	O	0112-3112	87.30	-19.57
6400751	62785480	AWI	693	-	X	X	X	X	-	-	S	-	-	-	O	0112-3112	85.61	8.40

Abbreviations

WMO : WMO id.
 Telcom : Telcom id.
 Typ : Buoy type
 - first character : Manufacturer (D = DBI , M = Metocean, P = Pacific Gyre
 T = Technocean, Y = Marlin-Yug...)
 - second character : Main type (F = FGGE, I = ICEB, S = SVP)
 - third character : Sub type (B = barometer buoy, W = Wind buoy,
 S = Salinity buoy)
 Ow : Buoy owner (country code or EU for EUCOS, E2 for HRSST-2 buoys, UP for upgraded
 buoys)
 Owner : Buoy owner for non EUCOS buoys
 Nobs : number of GTS reports received at Meteo-France
 Parameters (X = OK, S = stopped, - = not measured) :
 Wi : Wind
 AT : Air Temperature
 AP : Air Pressure
 dP : Air pressure tendency
 ST : Sea surface Temperature
 Wa : Wave period and height
 Ws : Wave spectra
 Dr : Drogue presence
 Sb : Subsurface temperature
 U : Relative humidity
 SS : Sea surface Salinity
 O : Origin of the reports (T = CLS Toulouse, L = CLS America, O = Other)
 Start_end : first and last dates of the month for which GTS data were received at Meteo-France
 Lat : Latitude of the latest position
 Lon : Longitude of the latest position
 Age : Age of the buoy (days)
 DepDate : Date of deployment
 DepLat : Latitude of deployment
 Dep Lon : Longitude of Deployment
 From : Harbour of departure

Definition : An operating drifting buoy is a buoy providing at least air pressure or wind
 (direction and velocity) data.

MOORED BUOYS

Former EGOS stations (K-pattern and Hydrosphere)

WMO	Name	nobs	Wi	AT	AP	dP	ST	Wa	Ws	Dr	Sb	U	SS	O	Start_end	Lat	Lon
6100001	Cote d'Azur	742	X	X	X	X	X	X	X	-	-	X	-	T	0112-3112	43.40	7.80
6100002	Lion	716	X	X	X	-	X	X	X	-	-	X	X	T	0112-3112	42.10	4.70
6200001	Gascogne	744	X	X	X	X	X	X	-	-	-	X	-	O	0112-3112	45.30	-5.00
6200029	K1	742	X	X	X	X	X	X	-	-	-	X	-	O	0112-3112	48.70	-12.50
6200081	K2	744	X	X	X	X	X	X	-	-	-	X	-	O	0112-3112	51.00	-13.20
6200090	M1	-	-	-	-	-	-	-	-	-	-	-	-	-	-	53.10	-11.20
6200091	M2	727	X	X	X	-	X	X	-	-	-	X	-	O	0112-3112	53.50	-5.40
6200092	M3	192	S	S	S	-	-	S	-	-	-	-	-	-	0112-0912	51.20	-10.50
6200093	M4	192	S	S	S	-	S	-	-	-	-	-	-	-	0112-0912	54.70	-9.10
6200094	M5	191	S	S	S	-	-	S	-	-	-	-	-	-	0112-0912	51.70	-6.70
6200095	M6	688	X	-	X	X	X	X	X	-	-	-	-	O	0112-3112	53.10	-15.90
6200105	K4	681	X	X	X	X	X	X	-	-	-	-	-	O	0112-3112	55.80	-11.40
6200108	K3	-	-	-	-	-	-	-	-	-	-	-	-	-	-	53.50	-19.50
6200163	Brittany	743	X	X	X	X	X	X	X	-	-	X	-	O	0112-3112	47.50	-8.40
6400045	K5	742	-	X	X	X	X	X	X	-	-	X	-	O	0112-3112	59.10	-11.70
6400046	K7	741	X	X	X	-	X	X	-	-	-	X	-	O	0112-3112	60.70	-5.20

Comments:
 - EUMETNET moored buoys are presented in bold characters.

E-SURFMAR DB Monthly Report December 2015

Former EGOS moored buoys (Spanish SeaWatch and WaveScan)

WMO	Name	nobs	Wi	AT	AP	dP	ST	Wa	Ws	Dr	Sb	U	SS	O	Start_end	Lat	Lon
1300130	Gran Canaria	681	X	X	X	-	X	X	X	-	-	-	X	O	0312-3112	28.18	-15.82
1300131	Tenerife Sur	742	X	X	X	-	X	X	X	-	-	-	X	O	0112-3112	28.00	-16.58
6100196	C. Begur	740	X	X	X	-	-	X	X	-	-	-	-	O	0112-3112	41.92	3.65
6100197	Mahon	693	X	X	X	-	-	X	X	-	-	-	-	O	0112-3112	39.72	4.42
6100198	C. de Gata	743	X	X	X	-	X	X	X	-	-	-	X	O	0112-3112	36.57	-2.33
6100280	Tarragona	713	X	X	X	-	X	X	X	-	-	-	X	O	0112-3112	40.77	1.47
6100281	Valencia	743	X	X	X	-	X	S	S	-	-	-	X	O	0112-3112	39.47	-0.27
6100417	C. de Palos	743	X	X	X	-	X	X	X	-	-	-	X	O	0112-3112	37.65	-0.32
6100430	Dragonera	331	X	X	X	-	X	X	X	-	-	-	-	O	1812-3112	39.56	2.11
6200024	Bilbao-Visc.	743	X	X	X	-	X	X	X	-	-	-	X	O	0112-3112	43.63	-3.03
6200025	C. de Penas	743	X	X	X	-	X	X	X	-	-	-	X	O	0112-3112	43.73	-6.17
6200082	E. de Bares	746	X	X	X	-	X	X	X	-	-	-	X	O	0112-3112	44.13	-7.69
6200083	Villano-Sis.	529	S	S	S	-	S	S	S	-	-	-	S		0112-2312	43.48	-9.22
6200084	C. Silleiro	744	X	X	X	-	X	X	X	-	-	-	X	O	0112-3112	42.12	-9.43
6200085	G. de Cadiz	742	X	X	X	-	X	X	X	-	-	-	X	O	0112-3112	36.48	-6.97
6201030	Santander	694	X	X	X	-	X	X	X	-	-	-	X	O	0112-3112	43.84	-3.77

Comments:

- The EUMETNET buoy is presented in bold characters.

Operating POSEIDON moored buoys (Greece)

WMO	Name	nobs	Wi	AT	AP	dP	ST	Wa	Ws	Dr	Sb	U	SS	O	Start_end	Lat	Lon
6101000		-	-	-	-	-	-	-	-	-	-	-	-			39.10	24.50
6101001		-	-	-	-	-	-	-	-	-	-	-	-			37.60	23.60
6101002		-	-	-	-	-	-	-	-	-	-	-	-			27.00	22.10
6101003		188	X	-	X	-	-	X	-	-	-	-	-	O	0112-3112	40.00	24.70
6101004		-	-	-	-	-	-	-	-	-	-	-	-			39.10	25.80
6101005		-	-	-	-	-	-	-	-	-	-	-	-			37.50	25.50
6101006		-	-	-	-	-	-	-	-	-	-	-	-			36.30	25.50
6101007		-	-	-	-	-	-	-	-	-	-	-	-			35.80	24.90
6101008		223	X	X	-	-	-	X	-	-	-	-	-	O	0112-3112	36.80	21.60
6101009		-	-	-	-	-	-	-	-	-	-	-	-			38.00	20.60

Other European moored buoys (operated by 3rd parties)

WMO	Name	nobs	Wi	AT	AP	dP	ST	Wa	Ws	Dr	Sb	U	SS	O	Start_end	Lat	Lon
1200050	Cycofos	-	-	-	-	-	-	-	-	-	-	-	-			33.60	31.90
6100010	Italia-1	-	-	-	-	-	-	-	-	-	-	-	-			43.80	9.10
6200027	Jersey	244	X	-	X	X	-	X	-	-	-	-	-	O	0112-3112	49.08	-22.20
6200030	L4	681	-	X	X	-	-	-	-	-	-	X	-	O	0312-3112	50.25	-4.22
6200050	E1	-	-	-	-	-	-	-	-	-	-	-	-			50.04	-4.37
6200086	NSB II	682	X	X	X	X	X	-	-	-	-	X	-	O	0112-3112	55.00	6.40
6200087	NSB III	118	S	S	S	S	S	-	-	-	-	S	-		1412-1912	54.70	6.80
6200191	Porto	-	-	-	-	-	-	-	-	-	-	-	-			41.15	-9.57
6200192	Peniche	-	-	-	-	-	-	-	-	-	-	-	-			39.50	-9.65
6200303	Turbo Bank	-	-	-	-	-	-	-	-	-	-	-	-			51.60	-5.10
6200442	PAP	765	X	-	-	-	-	-	-	-	-	-	-	O	0112-3112	49.00	-16.40
6600021	Arkona Becken	741	X	X	-	-	X	-	-	-	-	-	-	O	0112-3112	54.90	13.90
6600022	Oder Bank	296	S	S	-	-	S	-	-	-	-	-	-		0112-1412	54.10	14.20
6600024	Darsser Schwelle	744	X	X	-	-	X	X	-	-	-	-	-	O	0112-3112	54.70	12.70

Other offshore moored buoys inside the EUMETNET area

WMO	Name	nobs	Wi	AT	AP	dP	ST	Wa	Ws	Dr	Sb	U	SS	O	Start_end	Lat	Lon
1300001		696	X	X	X	-	-	-	-	-	-	X	-	O	0112-3112	11.47	-23.00
1300008		736	X	X	X	-	X	-	-	-	-	X	-	L	0112-3112	14.98	-38.02
1300308	East Atlantic	-	-	-	-	-	-	-	-	-	-	-	-			15.00	-38.00

**E-SURFMAR DB Monthly Report
December 2015**

4100026	338	X	X	-	-	X	-	-	-	-	X	-	L	0112-3112	11.49	-38.40
4100040 West Atlantic	758	X	X	X	X	X	X	-	-	-	X	-	O	0112-3112	14.50	-53.00
4100041 Mid. Atlantic	772	X	X	X	X	X	X	-	-	-	X	-	O	0112-3112	14.50	-46.00
4100043 Porto Rico	772	X	X	X	X	X	X	-	-	-	X	-	O	0112-3112	21.00	-65.00
4100044	772	X	X	X	X	X	X	-	-	-	X	-	O	0112-3112	21.70	-58.70
4100046	771	X	X	X	X	X	X	-	-	-	X	-	O	0112-3112	23.90	-70.90
4100047	-	-	-	-	-	-	-	-	-	-	-	-	-	-	27.50	-71.50
4100048	769	X	X	X	X	X	X	-	-	-	X	-	O	0112-3112	32.00	-69.60
4100049	773	X	X	X	X	X	X	-	-	-	X	-	O	0112-3112	27.50	-53.00
4100139	666	X	X	X	-	X	-	-	-	-	X	-	L	0112-3112	20.02	-37.86
4100300 Antilles	704	X	X	X	X	X	X	-	-	-	X	-	T	0112-3112	15.85	-57.47
4200059 Caraibes	771	X	X	X	X	X	X	-	-	-	X	-	O	0112-3112	15.00	-67.50
4400008 A Nantucket	773	X	X	X	X	X	X	-	-	-	X	-	O	0112-3112	40.50	-69.40
4400011 D Georges Bk	776	X	X	X	X	X	X	-	-	-	X	-	O	0112-3112	41.10	-66.60
4400018 SE Cape Cod	774	X	X	X	X	X	X	-	-	-	X	-	O	0112-3112	41.30	-69.30
4400024 NNE Channel	695	X	X	X	-	X	X	-	-	-	-	-	O	0112-3112	42.30	-65.90
4400137 E Scotia Sl.	734	X	X	X	X	X	X	-	-	-	-	-	O	0112-3112	42.30	-62.00
4400138 SW Gd Banks	-	-	-	-	-	-	-	-	-	-	-	-	-	-	44.30	-53.60
4400139 Beanquereau	724	X	X	X	X	X	X	-	-	-	-	-	O	0112-3112	44.30	-57.10
4400140 Tail of Bk	-	-	-	-	-	-	-	-	-	-	-	-	-	-	43.80	-51.70
4400141 Larentian F	720	X	X	X	X	X	X	-	-	-	-	-	O	0112-3112	43.00	-58.00
4400150 La Have Bk	718	X	-	X	X	X	X	-	-	-	-	-	O	0112-3112	42.50	-64.00

E-SURFMAR DB Monthly Report December 2015

Buoy-QC statistics from Meteo-France model outputs

Datend : Date of the last value received on GTS
Recvd : Total number of values received on GTS
GE : Number of Gross Errors (excluded from bias and sd computations)
bias : Mean differences between observation values and co-located model output values
Std : Standard deviation of differences

Air Pressure (hPa), drifting buoys, December 2015

Datend	WMO	Telcom	Recvd	GE	Bias	Std
20151231	1300868	11686410	744	0	0.2	0.5
20151231	1300869	11688410	744	0	0.1	0.4
20151231	1300870	61512860	744	0	0.9	0.6
20151231	1300871	61516870	744	0	0.4	0.4
20151231	1300872	61611050	744	0	0.5	0.4
20151231	1500681	61661310	744	0	0.2	0.6
20151231	1500682	61663300	744	0	0.6	0.8
20151231	1500683	61663370	744	0	0.8	0.4
20151231	1500684	62328350	744	0	-0.3	0.4
20151231	1500685	62854900	744	0	0.3	0.7
20151231	1500686	62959110	744	0	-0.1	0.6
20151231	1500688	62958430	723	0	0.3	0.8
20151231	2500617	61767070	746	0	-0.7	0.6
20151231	2500618	11020180	744	0	0.1	0.7
20151222	2500619	62856890	508	0	0.2	0.4
20151207	2500620	61760090	147	0	0.0	0.8
20151222	2500621	62956120	519	0	0.0	0.3
20151231	2500622	62850900	744	0	-0.2	0.5
20151231	2500623	62955110	744	0	0.1	0.7
20151221	4100637	62859910	153	0	0.5	0.6
20151231	4100638	62955440	636	0	0.4	0.7
20151231	4100707	62957110	744	0	-0.7	0.9
20151231	4100708	62958100	744	0	0.3	0.4
20151231	4100729	62321360	744	0	0.3	0.6
20151231	4100730	62326350	744	0	0.8	0.8
20151231	4100731	62329360	744	0	0.3	0.6
20151206	4100969	60213780	44	0	-0.7	0.4
20151231	4100970	60213790	744	0	0.5	0.7
20151231	4100972	60217780	743	0	-0.1	0.6
20151231	4400513	61475450	744	0	0.3	1.1
20151231	4400515	61476450	744	0	-0.0	0.7
20151231	4400517	61477390	744	0	0.3	0.7
20151231	4400546	11160640	744	0	-0.1	0.5
20151231	4400547	60173710	587	19	-0.1	1.7
20151231	4400548	11799230	744	0	0.3	1.0
20151231	4400549	60896130	744	0	-0.8	1.0
20151231	4400551	60892140	744	3	-0.1	1.3
20151231	4400557	61568540	743	0	0.5	0.7
20151231	4400601	60890150	744	0	-0.5	0.8
20151231	4400608	11093800	744	0	0.2	0.8
20151231	4400609	61613050	744	0	0.2	0.9
20151231	4400613	11475040	744	0	-0.1	0.4
20151231	4400614	61661340	744	0	-0.6	1.2
20151227	4400620	61667370	633	1	0.2	1.3
20151231	4400623	61669330	744	0	-0.1	0.8
20151231	4400624	11341110	736	0	-0.2	0.4
20151231	4400625	61668340	724	0	0.4	0.8
20151231	4400739	61516840	744	0	0.3	0.7
20151231	4400740	11883820	744	0	-0.1	0.6
20151231	4400744	62953450	744	0	0.0	0.9
20151231	4400746	62850730	744	0	0.3	0.6
20151231	4400747	62327370	744	0	-0.2	1.1
20151231	4400760	61662360	744	0	-0.7	0.8
20151231	4400761	61669320	744	0	-0.5	0.9
20151231	4400762	61664310	744	0	0.3	0.8
20151231	4400763	61667330	741	0	-0.0	0.7
20151231	4400765	62325370	710	0	0.3	0.8
20151231	4400766	62326340	744	0	0.5	0.7
20151231	4400764	61662330	744	0	-0.5	0.9
20151231	4400768	62322360	744	2	0.7	1.0
20151231	4400769	62328360	744	0	0.4	0.7
20151231	4400772	62950440	248	0	0.1	0.6

E-SURFMAR DB Monthly Report December 2015

20151231	4400774	61477400	744	0	0.2	0.5
20151231	4400775	61476400	743	0	0.6	0.7
20151231	4400776	61474410	743	0	0.3	0.7
20151231	4400777	62854730	228	0	0.2	0.6
20151231	4400778	61475430	744	0	0.2	0.5
20151231	4400779	62951460	208	0	0.1	0.7
20151231	4400835	60218770	744	0	-0.5	0.5
20151231	4400836	60218680	744	1	0.1	1.1
20151231	4400837	60209590	744	0	-0.1	0.4
20151231	4400839	60205090	744	0	-0.1	0.5
20151231	4400846	60441290	744	0	0.4	0.5
20151231	4400848	60448280	744	0	0.2	0.5
20151231	4400863	60211690	744	0	-0.4	0.5
20151231	4400866	11793240	744	0	-0.2	0.9
20151231	4400867	11593590	744	0	-0.1	0.8
20151231	4400868	11794230	744	0	-0.1	1.5
20151231	4400869	61615050	741	10	0.8	2.4
20151231	4400871	11790240	744	6	0.1	1.1
20151231	4400872	60202920	744	17	-0.3	1.5
20151231	4400873	61612060	744	0	0.6	0.8
20151231	4400874	62858910	744	0	0.2	0.9
20151217	4400875	61616040	26	0	2.5	2.0
20151231	4400878	60528170	744	0	-0.0	0.5
20151231	4400880	60556880	732	0	-0.3	0.9
20151231	4400885	60218780	744	0	-0.1	0.5
20151231	4400887	60251440	744	0	-0.1	0.6
20151231	4400888	60359010	744	0	-0.1	0.6
20151231	4400889	60202320	744	0	0.0	0.6
20151231	4400890	12000230	744	0	0.3	0.7
20151231	4400891	12007220	744	0	-0.0	0.5
20151231	6200513	61665360	744	0	-0.1	1.0
20151231	6200516	11475100	744	0	0.4	0.5
20151231	6200539	60891140	744	2	-0.3	1.2
20151231	6200552	11797240	742	0	0.2	0.5
20151231	6200553	11165650	744	0	-0.0	0.7
20151231	6200554	62952460	666	0	0.3	0.9
20151231	6200555	61515850	744	0	0.3	0.9
20151231	6200556	61510860	744	0	0.7	1.2
20151231	6200557	62328340	744	0	-0.1	1.1
20151221	6200681	11168640	489	81	-1.0	1.9
20151231	6200695	60408990	744	0	0.3	0.6
20151231	6200713	11246980	738	0	-0.1	0.6
20151231	6200714	11240980	742	0	-0.2	0.6
20151231	6200940	60203850	744	0	-0.3	0.6
20151231	6200941	60207590	744	0	-0.2	0.5
20151217	6300645	60892150	394	7	-1.0	1.7
20151231	6400519	61518850	744	0	0.2	0.9
20151231	6400521	11470030	744	0	-0.1	0.6
20151231	6400522	61511870	744	0	-0.3	0.8
20151231	6400523	61510870	402	0	-0.1	1.0
20151231	6400524	61619040	744	0	0.3	1.1
20151231	6400525	60175710	576	25	-0.0	1.7
20151231	6400526	61611070	744	0	0.3	0.7
20151231	6400528	61471310	744	0	0.4	0.9
20151201	6400529	11027150	14	0	-1.7	1.5
20151231	6400530	61470290	739	0	0.4	0.6
20151231	6400547	61473300	744	0	0.3	0.9
20151231	6400549	60898120	744	0	-0.5	1.3
20151231	6400550	11463700	393	130	-0.8	3.4
20151231	6400551	11795230	737	0	0.9	0.8
20151231	6400553	62954270	744	1	0.0	1.1
20151231	6400554	62958280	744	0	0.3	1.2
20151231	6400555	62955280	744	2	0.2	1.1
20151231	6400560	62956270	744	2	0.2	1.2
20151231	6400606	61515870	721	0	0.4	1.0
20151231	6400621	61614070	744	0	-0.1	0.8
20151226	6400622	60172810	610	0	0.0	0.7
20151231	6400623	11470040	744	2	-0.3	1.3
20151231	6400666	60179710	744	14	0.2	1.8
20151231	6400667	61615060	688	2	-0.5	1.2
20151231	6400668	60177860	744	34	-0.2	1.6
20151231	6400694	11548420	255	0	-0.3	1.6
20151201	6500511	62857900	12	12	6.6	0.5
20151210	6500512	62951440	196	0	-0.4	1.0
20151231	6500514	62954450	576	24	1.2	1.4

E-SURFMAR DB Monthly Report December 2015

20151203	6500515	62858710	60	8	2.0	2.7
20151209	6500516	62954440	216	0	0.2	0.5
20151231	6500519	61666340	255	0	-0.4	0.8
20151231	6500596	61511850	744	0	-0.0	0.8
20151231	6500599	62326370	742	0	-0.0	0.7
20151231	6500601	62320360	744	0	0.3	0.7
20151231	6500602	62323360	744	0	-0.5	0.7
20151231	6500603	62959440	744	16	0.4	2.0

Air Pressure (hPa), moored buoys, December 2015

Datend	WMO	Telcom	Recvd	GE	Bias	Std
20151231	1300130		681	0	0.1	0.7
20151231	1300131		742	0	0.5	0.6
20151231	6100001		741	0	0.2	0.5
20151231	6100002		716	0	0.4	0.5
20151231	6100196		740	0	0.3	0.6
20151231	6100197		693	0	0.1	0.5
20151231	6100198		743	0	0.2	0.7
20151231	6100280		713	0	0.7	3.0
20151231	6100281		743	0	0.4	0.6
20151231	6100417		743	0	0.3	0.6
20151231	6100430		331	0	0.3	0.6
20151231	6101003		188	0	0.2	0.6
20151231	6200001		744	0	0.1	0.6
20151231	6200024		743	0	0.4	0.7
20151231	6200025		743	0	0.4	0.6
20151231	6200027		235	0	0.2	0.6
20151231	6200029		742	0	-0.2	0.9
20151231	6200030		681	0	0.1	0.6
20151231	6200081		744	0	-0.2	0.9
20151231	6200082		743	0	0.7	0.6
20151223	6200083		529	0	0.0	0.8
20151231	6200084		743	0	0.2	0.7
20151231	6200085		742	0	0.3	0.6
20151231	6200086		658	0	-0.5	0.8
20151219	6200087		118	0	-0.2	0.4
20151231	6200091		578	23	-0.3	1.5
20151209	6200092		192	0	0.2	0.8
20151207	6200093		156	47	1.6	3.6
20151209	6200094		191	0	-0.4	0.9
20151231	6200095		686	0	-0.1	1.2
20151231	6200105		667	2	-0.1	1.4
20151231	6200163		743	0	-0.1	0.6
20151231	6400045		742	1	0.1	1.2
20151231	6400046		741	1	-0.1	1.0

Air Temperature (C), moored buoys, December 2015

Datend	WMO	Telcom	Recvd	GE	Bias	Std
20151231	1300130		681	0	1.8	1.0
20151231	1300131		742	0	0.5	0.7
20151231	6100001		740	0	-0.2	0.7
20151231	6100002		716	0	0.4	0.5
20151231	6100196		740	0	-0.1	0.5
20151231	6100197		692	0	1.2	2.1
20151231	6100198		743	0	-0.1	0.6
20151231	6100280		713	0	0.5	0.9
20151231	6100281		743	0	0.6	0.7
20151231	6100417		743	0	0.3	0.5
20151231	6100430		328	0	1.4	1.9
20151231	6101008		223	0	0.7	0.8
20151231	6200001		744	0	-0.2	0.4
20151231	6200024		743	0	0.4	0.7
20151231	6200025		739	0	-0.1	0.9
20151231	6200029		742	0	-0.2	0.7
20151231	6200030		681	0	-0.7	0.5
20151231	6200081		744	0	-0.2	0.7
20151231	6200082		741	0	-0.0	0.6
20151223	6200083		529	0	-0.1	0.5

E-SURFMAR DB Monthly Report December 2015

20151231	6200084	743	0	0.2	0.5
20151231	6200085	742	0	0.0	0.6
20151231	6200086	667	0	-0.3	0.6
20151219	6200087	118	0	-0.1	0.9
20151231	6200091	727	0	0.0	0.7
20151209	6200092	192	0	-0.0	0.6
20151209	6200093	192	0	-0.3	0.7
20151209	6200094	191	0	-0.2	0.6
20151231	6200105	681	1	-0.3	0.7
20151231	6200163	742	0	-0.1	0.5
20151231	6400045	742	0	-0.6	0.8
20151231	6400046	741	0	-0.6	0.7
20151231	6600021	740	1	0.2	0.5
20151214	6600022	296	0	0.5	0.6
20151231	6600024	744	0	0.7	0.6

Wind direction (deg.), moored buoys, December 2015

Datend	WMO	Telcom	Recvd	GE	Bias	Std
20151231	1300130		676	158	4	35
20151231	1300131		739	26	-6	31
20151231	6100001		741	38	-1	31
20151231	6100002		716	52	8	29
20151231	6100196		723	40	-2	32
20151231	6100197		488	0	-4	24
20151231	6100198		725	53	-5	32
20151231	6100280		650	231	2	55
20151231	6100281		706	118	4	43
20151231	6100417		736	18	-3	24
20151231	6100430		327	29	-5	41
20151231	6101003		188	28	-59	36
20151231	6101008		221	78	-79	52
20151231	6200001		744	1	-2	17
20151231	6200024		737	23	-9	26
20151231	6200025		740	44	-5	33
20151231	6200027		212	0	1	22
20151231	6200029		741	10	-3	15
20151231	6200081		744	3	-3	18
20151231	6200082		739	2	3	19
20151223	6200083		529	1	1	18
20151231	6200084		741	9	16	15
20151231	6200085		718	9	2	19
20151231	6200086		670	7	6	12
20151219	6200087		118	0	-0	14
20151231	6200091		727	1	1	18
20151209	6200092		192	1	3	14
20151209	6200093		192	0	7	17
20151209	6200094		191	0	-4	19
20151231	6200105		597	3	1	15
20151231	6200163		742	1	-1	11
20151231	6200442		744	6	7	16
20151231	6400046		741	8	6	18
20151231	6600021		739	6	-5	11
20151214	6600022		296	0	-3	13
20151231	6600024		744	1	1	12

Wind speed rate, moored buoys, December 2015

Datend	WMO	Telcom	Recvd	GE	Rate	Err
20151231	1300130		676	0	0.9	3.0
20151231	1300131		739	0	1.1	1.9
20151231	6100001		741	0	1.4	1.5
20151231	6100002		716	0	1.3	1.7
20151231	6100196		723	2	1.3	1.7
20151231	6100197		488	0	1.1	0.9
20151231	6100198		725	0	1.0	1.7
20151231	6100280		650	1	1.8	1.3
20151231	6100281		706	1	1.5	1.4
20151231	6100417		736	1	1.1	1.3
20151231	6100430		327	0	2.1	1.0
20151231	6101003		188	8	0.7	2.8

E-SURFMAR DB Monthly Report December 2015

20151231	6101008	221	0	0.0	0.0
20151231	6200001	744	0	1.0	1.4
20151231	6200024	737	0	1.1	1.6
20151231	6200025	740	0	0.8	2.2
20151231	6200027	212	0	0.9	1.4
20151231	6200029	741	0	0.9	1.9
20151231	6200081	744	2	1.0	2.3
20151231	6200082	739	1	0.8	2.1
20151223	6200083	529	0	0.8	1.4
20151231	6200084	741	1	1.0	2.0
20151231	6200085	718	0	0.7	1.7
20151231	6200086	668	2	1.1	1.7
20151219	6200087	118	0	1.0	1.6
20151231	6200091	727	0	1.0	2.5
20151209	6200092	192	0	0.9	2.2
20151209	6200093	192	0	0.9	2.3
20151209	6200094	191	0	1.0	3.1
20151231	6200105	597	1	1.0	1.7
20151231	6200163	742	3	0.9	1.4
20151231	6200442	744	4	1.0	1.9
20151231	6400046	741	5	1.0	1.7
20151231	6600021	739	0	1.1	1.6
20151214	6600022	296	0	1.1	1.6
20151231	6600024	744	0	1.2	1.4

Comments on QC statistics :

Air pressure

1. Metocean buoys WMO **4400547**, **4400872**, **6400525**, **6400666**, **6400668** and **6500603** temporarily reported wrong pressure values during December for unknown reasons.
2. Metocean buoy WMO **4400875**, **6400529**, **6500511** and **6500515** reported wrong pressure values at the beginning of december before their transmission was stopped.
3. Metocean buoy WMO **6200681** and **6300645** reported wrong pressure values at the mid-month before their transmission was stopped.
4. Metocean buoy WMO **4400869** and **6400550** reported wrong pressure values at the end of december before their transmission was stopped.
5. Metocean buoy WMO **6500514** reported wrong pressure values and the transmission was stopped between 8th and 15th december.
6. Eumetnet moored buoy M2 WMO **6200091** reported wrong pressure values and was stopped between 6th and 14th December.
7. Eumetnet moored buoy M4 WMO **6200093** reported wrong pressure values at the beginning of december and was stopped on 7th December.
8. Spanish moored buoy WMO **6100280** continued to report wrong pressure values throughout the month.

Air Temperature

1. Since the beginning of the month Eumetnet Spanish moored buoy WMO **1300130** **6100197** and **6100430** reported air temperature values with a systematic bias of about 2 °C.

E-SURFMAR DB Monthly Report December 2015

Wind

1. Wind speed values reported by Spanish moored buoy WMO **6100430** seems too high.
2. A bias of about 60 degrees in average appeared on wind directions reported by Greek moored buoy WMO **6101003** in December.
3. Greek moored buoy WMO **6101008** continued to report abnormal calm winds onto the GTS.

Monthly QC statistics and other data quality control tools are available on line at :

<http://www.meteo.shom.fr/qctools/>

The working area of the E-SURFMAR website is open at <http://esurfmar.meteo.fr/wikisurf-wa/> . Ask the E-SURFMAR Programme Manager Pierre.Blouch@meteo.fr for the password in case you forgot it. Graphs of system performances June be displayed/downloaded at http://esurfmar.meteo.fr/doc/r/surfmar/others/e-surfmar_monitoring.pdf.