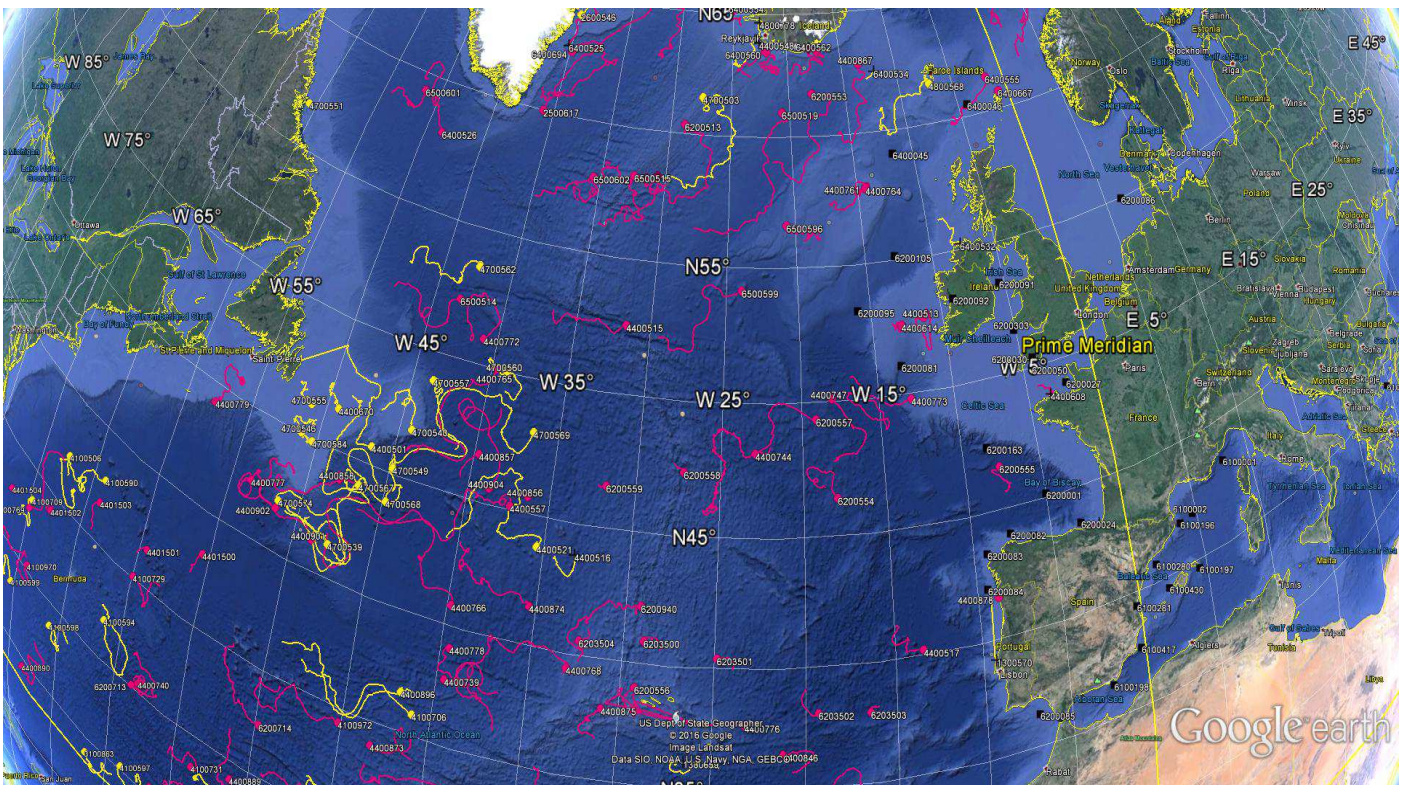


**E-SURFMAR DB
Monthly Report
March 2016**

DATA BUOY MONTHLY REPORT

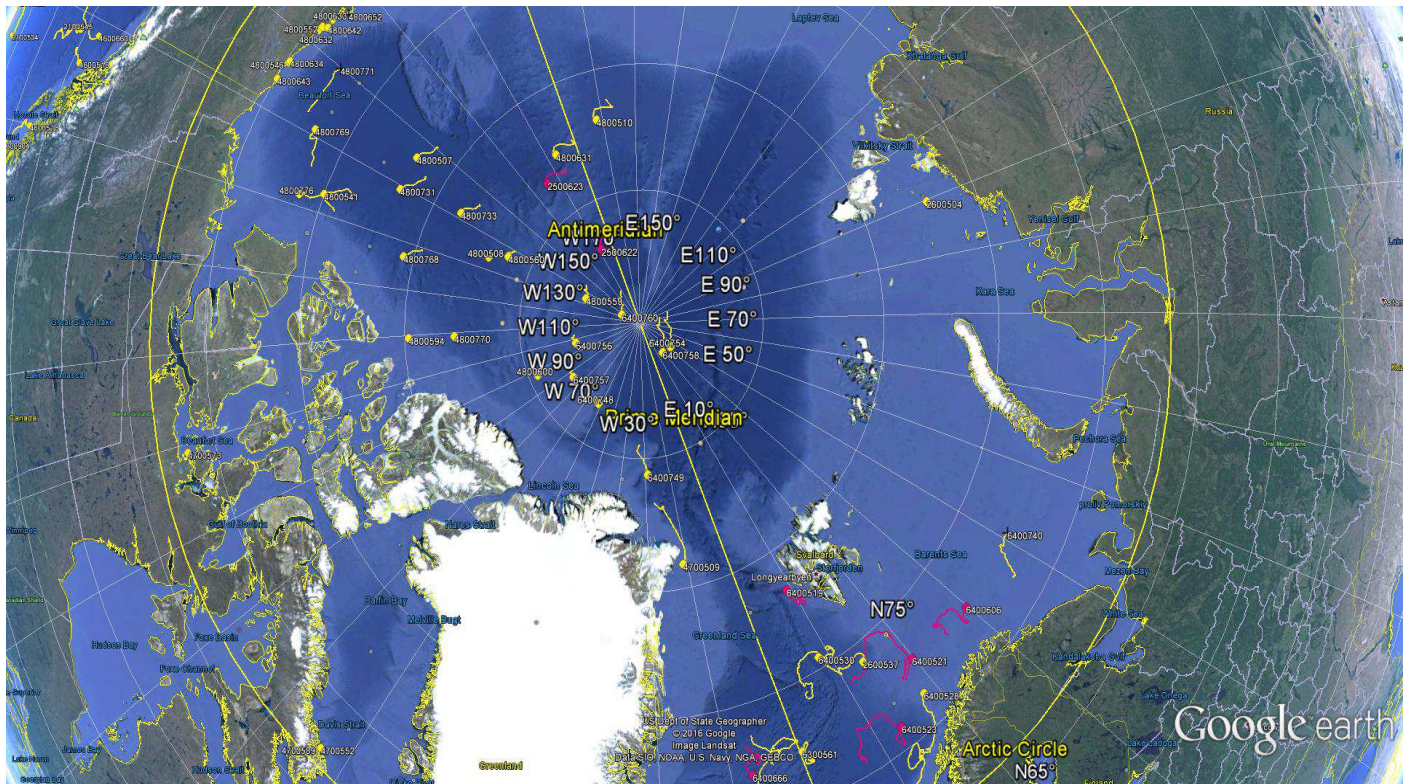
March 2016



*March 2016 : Operating data buoys in the North Atlantic
Drifting buoy trajectories : E-SURFMAR (red), others (yellow)
Moored buoy positions (black)*

*Most recent trajectories may be seen at:
http://www.meteo.shom.fr/cartographie/data/kml/MeteoFrance_buoys_map_15.kmz*

E-SURFMAR DB Monthly Report March 2016



March 2016
Drifting buoy trajectories in Arctic Ocean and adjacent seas : E-SURFMAR (red), others (yellow)

DRIFTING BUOYS

Network status

By the end of March, **131 Drifting buoys**, reporting air pressure onto the GTS, were in operation in the frame of E-SURFMAR. Out of these, 90 were E-SURFMAR funded Iridium SVP-Bs, including 3 deployed in the Arctic, 18 in AtlantOS activities and 3 HRSST-2 buoys. The remaining buoys were: 41 drifters owned by NOAA and upgraded with barometers by E-SURFMAR.

Information about the availability of buoys for future deployments may be get from the E-SURFMAR wikisite (working area) at: http://esurfmar.meteo.fr/wikisurf-wa/index.php/Availability_of_drifting_buoys

Besides E-SURFMAR buoys, 66 drifting buoys were reporting at least air pressure observations from the EUMETNET area of interest.

Drifting buoys - New deployments

WMO	Telcom	Typ	Ow	Dep_Date	DepLat	DepLon	From	Comment
	62959270	MSB	EU	20160329	63.9	-5.0	Rotterdam	Skogafoss (Failed at deployment)
1300881	62958450	MSB	EU	20160310	6.8	-24.2	Brest	Thalassa
1300882	62851900	MSB	EU	20160311	4.0	-23.0	Brest	Thalassa
1500689	62859770	MSB	EU	20160313	-2.3	-23.2	Brest	Thalassa
1500690	62953440	MSB	EU	20160314	-4.0	-29.8	Brest	Thalassa
1500691	62959100	MSB	EU	20160315	-6.4	-20.5	Brest	Thalassa
1500692	62852910	MSB	EU	20160315	-7.4	-20.2	Brest	Thalassa
1500693	62955320	MSB	EU	20160316	-8.2	-20.1	Brest	Thalassa
1500694	62958270	MSB	EU	20160317	-9.3	-12.2	Brest	Thalassa
1500695	62859890	MSB	EU	20160321	-3.2	-12.4	Brest	Thalassa
1500696	62956260	MSB	EU	20160323	1.7	-11.3	Brest	Thalassa
1500697	62957270	MSB	EU	20160318	-11.2	-10.4	Brest	Thalassa
4400856	62728290	MSB	EU	20160327	45.7	-36.3	Liverpool	Atlantic Conveyor
4400857	62329370	MSB	EU	20160328	46.8	-39.7	Liverpool	Atlantic Conveyor
4400858	62329350	MSB	EU	20160329	44.0	-47.9	Liverpool	Atlantic Conveyor
4401500	61390930	DSB	UP	20160325	38.3	-55.4	Norfolk	OOCL Kobe
4401501	61878860	DSB	UP	20160324	36.8	-59.3	Norfolk	OOCL Kobe
4401502	61879840	DSB	UP	20160323	34.3	-67.8	Norfolk	OOCL Kobe
4401503	61879850	DSB	UP	20160324	36.9	-63.8	Norfolk	OOCL Kobe
4401504	61879860	DSB	UP	20160323	32.9	-72.0	Norfolk	OOCL Kobe
6200558	62324370	MSB	EU	20160326	47.4	-27.2	Liverpool	Atlantic Conveyor
6200559	62327350	MSB	EU	20160327	46.6	-31.8	Liverpool	Atlantic Conveyor
6203500	61390940	DSB	UP	20160318	40.9	-28.9	Norfolk	Dalian Express
6203501	61390950	DSB	UP	20160319	40.4	-24.9	Norfolk	Dalian Express
6203502	61390960	DSB	UP	20160319	38.2	-19.3	Norfolk	Dalian Express
6203503	61391920	DSB	UP	20160320	38.0	-16.5	Norfolk	Dalian Express
6203504	61391930	DSB	UP	20160318	40.6	-32.4	Norfolk	Dalian Express
6300646	62951280	MSB	EU	20160328	64.4	2.3	Rotterdam	Skogafoss

Operating drifting buoys in North Atlantic by the end of the month

WMO	Telcom	Typ	Ow	nobs	Wi	AT	AP	dP	ST	Wa	Ws	Dr	Sb	U	SS	O	Start_end	Lat	Lon	Age
1300868	11686410	MSB	EU	744	-	-	X	-	X	-	-	X	-	-	-	T	0103-3103	30.21	-15.15	497
1300869	11688410	MSB	EU	744	-	-	X	-	X	-	-	X	-	-	-	T	0103-3103	23.78	-41.53	495
1300871	61516870	MSB	EU	724	-	-	X	-	X	-	-	X	-	-	-	T	0103-3103	28.18	-37.12	383
1300872	61611050	MSB	EU	744	-	-	X	-	X	-	-	X	-	-	-	T	0103-3103	23.99	-31.30	384
2500617	61767070	MSB	EU	744	-	-	X	-	X	-	-	-	-	-	-	T	0103-3103	60.00	-40.85	558
2500622	62850900	MSB	EU	744	-	-	X	-	-	-	-	-	-	-	-	T	0103-3103	86.82	-171.86	207
2500623	62955110	MSB	EU	744	-	-	X	-	-	-	-	-	-	-	-	T	0103-3103	83.43	-165.74	200
4100729	62321360	MSB	EU	744	-	-	X	-	X	-	-	X	-	-	-	T	0103-3103	35.17	-59.86	310
4100730	62326350	MSB	EU	744	-	-	X	-	X	-	-	X	-	-	-	T	0103-3103	29.51	-77.76	309
4100731	62329360	MSB	EU	744	-	-	X	-	X	-	-	X	-	-	-	T	0103-3103	28.49	-53.59	315
4100970	60213790	PSB	UP	744	-	-	X	-	X	-	-	X	-	-	-	T	0103-3103	30.45	-68.86	966

E-SURFMAR DB Monthly Report March 2016

6300646	62951280	MSB	EU	65	-	-	X	-	X	-	-	X	-	-	-	T	2903-3103	64.44	2.27	4
6400519	61518850	MSB	EU	744	-	-	X	-	X	-	-	X	-	-	-	T	0103-3103	78.41	9.10	439
6400523	61510870	MSB	EU	706	-	-	X	-	X	-	-	X	-	-	-	T	0103-3103	70.98	13.43	509
6400524	61619040	MSB	EU	744	-	-	X	-	-	-	-	X	-	-	-	T	0103-3103	66.92	13.42	509
6400526	61611070	MSB	EU	738	-	-	X	-	X	-	-	X	-	-	-	T	0103-3103	58.00	-48.53	507
6400528	61471310	DSB	UP	744	-	-	X	-	X	-	-	X	-	-	-	T	0103-3103	71.47	18.16	288
6400530	61470290	DSB	UP	744	-	-	X	-	X	-	-	X	-	-	-	T	0103-3103	75.45	8.34	288
6400547	61473300	DSB	UP	744	-	-	X	-	X	-	-	X	-	-	-	T	0103-3103	69.85	0.22	287
6400549	60898120	MSB	EU	744	-	-	X	-	X	-	-	X	-	-	-	T	0103-3103	66.58	-23.80	286
6400551	11795230	MSB	E2	744	-	-	X	-	X	-	-	X	-	-	-	T	0103-3103	58.26	-30.63	283
6400553	62954270	MSB	EU	744	-	-	X	-	X	-	-	X	-	-	-	T	0103-3103	67.48	6.25	202
6400554	62958280	MSB	EU	744	-	-	X	-	X	-	-	X	-	-	-	T	0103-3103	65.32	-25.54	201
6400555	62955280	MSB	EU	744	-	-	X	-	X	-	-	X	-	-	-	T	0103-3103	61.37	-1.77	132
6400560	62956270	MSB	EU	744	-	-	X	-	X	-	-	X	-	-	-	T	0103-3103	63.42	-21.90	132
6400562	62957280	MSB	EU	744	-	-	X	-	X	-	-	X	-	-	-	T	0103-3103	63.44	-17.16	60
6400606	61515870	MSB	EU	744	-	-	X	-	X	-	-	X	-	-	-	T	0103-3103	72.59	29.80	435
6400623	11470040	MSB	EU	744	-	-	X	-	X	-	-	X	-	-	-	T	0103-3103	68.67	-12.13	1055
6400666	60179710	MSB	EU	744	-	-	X	-	X	-	-	X	-	-	-	T	0103-3103	72.08	-7.09	855
6400667	61615060	MSB	EU	674	-	-	X	-	-	-	-	X	-	-	-	T	0103-3103	60.70	-1.00	827
6400694	11548420	MSB	UP	744	-	-	X	-	X	-	-	X	-	-	-	T	0103-3103	62.56	-39.77	104
6500514	62954450	MSB	EU	744	-	-	X	-	X	-	-	X	-	-	-	T	0103-3103	52.19	-43.15	252
6500519	61666340	MSB	EU	744	-	-	X	-	X	-	-	X	-	-	-	T	0103-3103	60.97	-20.68	103
6500596	61511850	MSB	EU	743	-	-	X	-	X	-	-	X	-	-	-	T	0103-3103	56.60	-20.68	652
6500599	62326370	MSB	EU	744	-	-	X	-	X	-	-	X	-	-	-	T	0103-3103	54.16	-23.94	327
6500601	62320360	MSB	EU	744	-	-	X	-	X	-	-	X	-	-	-	T	0103-3103	59.32	-51.33	324
6500602	62323360	MSB	EU	744	-	-	X	-	X	-	-	X	-	-	-	T	0103-3103	57.87	-35.56	324

Operating AtlantOS drifting buoys by the end of the month

WMO	Telcom	Typ	Ow	nobs	Wi	AT	AP	dP	ST	Wa	Ws	Dr	Sb	U	SS	O	Start_end	Lat	Lon	Age
1300881	62958450	MSB	EU	513	-	-	X	-	X	-	-	X	-	-	-	T	1003-3103	6.79	-24.17	22
1300882	62851900	MSB	EU	424	-	-	X	-	X	-	-	X	-	-	-	T	1403-3103	4.01	-22.99	21
1500681	61661310	MSB	EU	744	-	-	X	-	X	-	-	X	-	-	-	T	0103-3103	-17.04	-33.53	349
1500682	61663300	MSB	EU	744	-	-	X	-	X	-	-	X	-	-	-	T	0103-3103	-13.97	-10.43	350
1500683	61663370	MSB	EU	744	-	-	X	-	X	-	-	X	-	-	-	T	0103-3103	-16.83	-35.29	351
1500684	62328350	MSB	EU	744	-	-	X	-	X	-	-	X	-	-	-	T	0103-3103	-9.29	-34.24	350
1500685	62854900	MSB	EU	744	-	-	X	-	X	-	-	X	-	-	-	T	0103-3103	-15.29	-16.96	219
1500686	62959110	MSB	EU	744	-	-	X	-	X	-	-	X	-	-	-	T	0103-3103	-6.92	-20.65	218
1500688	62958430	MSB	EU	716	-	-	X	-	X	-	-	X	-	-	-	T	0103-3103	-2.53	-26.24	217
1500689	62859770	MSB	EU	424	-	-	X	-	X	-	-	X	-	-	-	T	1403-3103	-2.30	-23.15	19
1500690	62953440	MSB	EU	421	-	-	X	-	X	-	-	X	-	-	-	T	1403-3103	-4.03	-29.79	18
1500691	62959100	MSB	EU	397	-	-	X	-	X	-	-	X	-	-	-	T	1503-3103	-6.36	-20.54	17
1500692	62852910	MSB	EU	375	-	-	X	-	X	-	-	X	-	-	-	T	1603-3103	-7.38	-20.23	17
1500693	62955320	MSB	EU	375	-	-	X	-	X	-	-	X	-	-	-	T	1603-3103	-8.21	-20.14	16
1500694	62958270	MSB	EU	323	-	-	X	-	X	-	-	X	-	-	-	T	1803-3103	-9.33	-12.15	15
1500695	62859890	MSB	EU	247	-	-	X	-	X	-	-	X	-	-	-	T	2103-3103	-3.17	-12.39	11
1500696	62956260	MSB	EU	207	-	-	X	-	X	-	-	X	-	-	-	T	2303-3103	1.73	-11.33	9
1500697	62957270	MSB	EU	319	-	-	X	-	X	-	-	X	-	-	-	T	1803-3103	-11.21	-10.36	14

Drifting buoys which ceased to be operational

WMO	Telcom	Typ	Ow	End_Date	Lat	Lon	Age	Cause
4400547	60173710	MSB	EU	20160314	63.6	-17.9	582	Ashore in Iceland
4400548	11799230	MSB	E2	20160316	63.8	-22.5	584	Ashore in Iceland
4400608	11093800	MSB	E2	20160309	48.8	-3.5	517	Ashore in Brittany
4400888	60359010	PSB	UP	20160303	43.4	-1.9	644	Ashore in Spain
6400525	60175710	MSB	EU	20160313	62.8	-40.2	940	Faded (Battery empty)

E-SURFMAR DB Monthly Report March 2016

Non-operating drifting buoys reporting GTS data

WMO	Telcom	Typ	Ow	nobs	Wi	AT	AP	dP	ST	Wa	Ws	Dr	Sb	U	SS	O	Start_end	Lat	Lon	Age
4100969	60213780	PSB	UP	478	-	-	-	-	X	-	-	X	-	-	-	T	0103-3103	28.48	-60.69	967
4400604	11794240	MSB	E2	744	-	-	-	-	X	-	-	X	-	-	-	T	0103-3103	47.61	-14.18	541
4400745	62956440	MSB	EU	744	-	-	-	-	X	-	-	X	-	-	-	T	0103-3103	38.77	-30.57	246
4400769	62328360	MSB	EU	744	-	-	S	-	X	-	-	X	-	-	-	T	0103-3103	33.16	-69.78	315
4400869	61615050	MSB	EU	744	-	-	-	-	X	-	-	X	-	-	-	T	0103-3103	41.14	-28.08	240
6500515	62858710	MSB	EU	744	-	-	S	-	X	-	-	X	-	-	-	T	0103-3103	58.16	-32.43	228
6400521	11470030	MSB	EU	744	-	-	S	-	X	-	-	X	-	-	-	T	0103-3103	72.93	19.78	1054
6400522	61511870	MSB	EU	608	-	-	-	-	X	-	-	X	-	-	-	T	0103-3103	71.77	-12.10	587
6400561	62950280	MSB	EU	744	-	-	-	-	X	-	-	X	-	-	-	T	0103-3103	62.76	-13.35	61

Non-operating drifting buoys which ceased to emit

WMO	Telcom	Typ	Ow	End_Date	Lat	Lon	Age	Cause										
6500595	11595570	MSB	EU	374	-	-	-	S	-	-	S	-	-	-	0103-1603	53.40	-9.90	639

Other operating drifting buoys inside the EUMETNET area by the end of the month

WMO	Telcom	Owner	nobs	Wi	AT	AP	dP	ST	Wa	Ws	Dr	Sb	U	SS	O	Start_end	Lat	Lon
1300515	114951	AOML	699	-	-	X	-	X	-	-	X	-	-	-	L	0103-3103	27.39	-51.38
1300519	127004	AOML	696	-	-	X	X	X	-	-	X	-	-	-	L	0103-3103	20.05	-51.27
1300530	114916	AOML	677	-	-	X	-	X	-	-	X	-	-	-	L	0103-3103	12.73	-26.35
1300572	127002	AOML	725	-	-	X	X	X	-	-	X	-	-	-	L	0103-3103	33.59	-21.16
1300575	63220960	CMM	511	-	-	X	-	X	-	-	X	-	-	-	T	1003-3103	9.68	-24.18
1300576	63126380	CMM	424	-	-	X	-	X	-	-	X	-	-	-	T	1403-3103	4.39	-24.08
1300577	63220600	CMM	423	-	-	X	-	X	-	-	X	-	-	-	T	1403-3103	2.91	-23.50
1300592			395	-	-	X	X	X	-	-	X	-	-	-	L	1403-3103	10.71	-29.92
1300593			393	-	-	X	X	X	-	-	X	-	-	-	L	1403-3103	7.47	-28.89
1300633	109491	AOML	728	-	-	X	X	X	-	-	X	-	-	-	L	0103-3103	28.80	-30.86
1300661	62325770	UKMO	744	-	-	X	-	-	-	-	X	-	-	-	T	0103-3103	15.85	-49.53
1300665	62327760	UKMO	744	-	-	X	-	-	-	-	X	-	-	-	T	0103-3103	23.12	-25.60
1500951	10450430	CMM	575	-	-	X	-	-	-	-	X	-	-	-	T	0103-3103	4.00	9.21
1500954	63127390	CMM	422	-	-	X	-	X	-	-	X	-	-	-	T	1403-3103	-3.61	-28.03
2100942	119223	UKMO	727	-	-	X	X	X	-	-	X	-	-	-	L	0103-3103	29.72	-45.94
2500575	137812	APL	1281	-	-	X	X	X	-	-	-	-	-	-	L	0103-3103	65.94	-35.68
2600537	61369210	IABP	741	-	-	X	S	X	-	-	X	-	-	-	O	0103-3103	74.23	13.87
2600545	62556750	IABP	741	-	S	X	S	-	-	-	X	-	-	-	O	0103-3103	70.56	-5.57
2600546			750	-	S	X	S	-	-	-	X	-	-	-	O	0103-3103	64.17	-39.85
3100706			485	-	-	X	X	X	-	-	X	-	-	-	L	1003-3103	4.94	-26.67
3100708			482	-	-	X	X	X	-	-	X	-	-	-	L	1003-3103	2.95	-22.12
3100863	61611040	CMM	650	-	-	X	-	X	-	-	X	-	-	-	T	0103-3103	24.16	-61.62
4100506	114944	AOML	706	-	-	X	-	X	-	-	X	-	-	-	L	0103-3103	37.40	-67.36
4100590	132676	AOML	741	-	-	X	X	X	-	-	X	-	-	-	L	0103-3103	37.98	-63.83
4100594	127029	AOML	727	-	-	X	X	X	-	-	X	-	-	-	L	0103-3103	32.10	-61.34
4100597	61512840	AOML	744	-	-	X	-	X	-	-	X	-	-	-	T	0103-3103	25.43	-58.64
4100598	61610040	AOML	744	-	-	X	-	X	-	-	X	-	-	-	T	0103-3103	28.95	-65.84
4100635	61475300	CMM	744	-	-	X	-	X	-	-	X	-	-	-	T	0103-3103	23.39	-51.10
4100638	62955440	CMM	744	-	-	-	-	X	-	-	X	-	-	-	T	0103-3103	17.83	-64.20
4100706	11595580	AOML	744	-	-	X	-	X	-	-	X	-	-	-	T	0103-3103	35.97	-41.02
4100707	62957110	CMM	744	-	-	X	-	-	-	-	X	-	-	-	T	0103-3103	13.77	-61.05
4100708	62958100	CMM	744	-	-	X	-	X	-	-	X	-	-	-	T	0103-3103	16.59	-44.14
4100709	11598570	CMM	423	-	-	X	-	X	-	-	X	-	-	-	T	1303-3103	33.67	-69.68
4100711	11477030	CMM	744	-	-	X	-	X	-	-	X	-	-	-	T	0103-3103	30.93	-23.30
4100975	109439	AOML	727	-	-	X	X	X	-	-	X	-	-	-	L	0103-3103	28.03	-26.28
4400521	133133	AOML	758	-	-	X	X	X	-	-	X	-	-	-	L	0103-3103	43.87	-35.38
4400558	123286	AOML	727	-	-	X	X	X	-	-	X	-	-	-	L	0103-3103	29.28	-45.99
4400670			742	-	-	X	S	X	-	-	X	-	-	-	O	0103-3103	46.57	-49.17
4400896	109438	AOML	733	-	-	X	X	X	-	-	X	-	-	-	L	0103-3103	36.76	-41.80
4700503	137813	APL	1262	-	-	X	X	X	-	-	-	-	-	-	L	0103-3103	61.49	-27.48
4700509	62553800	IABP	730	-	S	X	S	-	-	-	X	-	-	-	O	0103-3103	80.91	-11.00
4700539	63512980	DFO	743	-	-	X	S	X	-	-	X	-	-	-	O	0103-3103	41.39	-47.67
4700540	63515680	DFO	742	-	-	X	S	X	-	-	X	-	-	-	O	0103-3103	46.88	-44.14

E-SURFMAR DB Monthly Report March 2016

4700546	63617000	DFO	742	-	-	X	S	X	-	-	X	-	-	-	O	0103-3103	45.07	-51.18
4700549	63516680	DFO	742	-	-	X	S	X	-	-	X	-	-	-	O	0103-3103	45.24	-44.76
4700551	60435010	EC	742	-	-	X	S	X	-	-	X	-	-	-	O	0103-3103	56.70	-60.67
4700552		EC	731	-	-	X	X	-	-	-	X	-	-	-	O	0103-3103	67.39	-63.27
4700555			741	-	-	X	X	X	-	-	X	-	-	-	O	0103-3103	46.27	-51.05
4700557			742	-	-	X	S	X	-	-	X	-	-	-	O	0103-3103	48.94	-43.54
4700560			741	-	-	X	X	X	-	-	X	-	-	-	O	0103-3103	50.05	-38.94
4700562	63515630	DFO	743	-	-	X	S	X	-	-	X	-	-	-	O	0103-3103	53.57	-42.38
4700567	63518580	DFO	745	-	-	X	S	X	-	-	X	-	-	-	O	0103-3103	44.11	-46.61
4700568	63517970	DFO	710	-	-	X	S	X	-	-	X	-	-	-	O	0103-3103	43.91	-44.74
4700569	63514970	DFO	704	-	-	X	S	X	-	-	X	-	-	-	O	0103-3103	48.07	-36.56
4700574			744	-	-	X	S	X	-	-	X	-	-	-	O	0103-3103	42.11	-51.41
4700584	63614000	DFO	742	-	-	X	S	X	-	-	X	-	-	-	O	0103-3103	44.92	-50.29
4700589	61762030	EC	741	-	-	X	S	-	-	-	X	-	-	-	O	0103-3103	67.39	-63.30
4800568	61363210	IABP	742	-	-	X	X	X	-	-	X	-	-	-	O	0103-3103	61.59	-7.20
6300561	60654200	AOML	731	-	-	X	-	X	-	-	X	-	-	-	L	0103-3103	72.30	0.34
6400748	62782480	AWI	1237	-	X	X	X	X	-	-	X	-	-	-	O	0103-3103	86.59	-51.87
6400749	62784540	AWI	1242	-	X	X	X	-	-	-	X	-	-	-	O	0103-3103	84.41	-18.82
6400754	61188690	AWI	220	-	-	X	X	-	-	-	X	-	-	-	O	2303-3103	88.50	33.47
6400758	62888930	AWI	318	-	-	X	X	-	-	-	X	-	-	-	O	1803-3103	88.57	18.52

----- Abbreviations -----

WMO : WMO id.
 Telcom : Telcom id.
 Typ : Buoy type
 - first character : Manufacturer (D = DBI , M = Metocean, P = Pacific Gyre
 T = Technocean, Y = Marlin-Yug...)
 - second character : Main type (F = FGGE, I = ICEB, S = SVP)
 - third character : Sub type (B = barometer buoy, W = Wind buoy,
 S = Salinity buoy)

Ow : Buoy owner (country code or EU for EUCOS, E2 for HRSST-2 buoys, UP for upgraded
 buoys)

Owner : Buoy owner for non EUCOS buoys
 Nobs : number of GTS reports received at Meteo-France
 Parameters (X = OK, S = stopped, - = not measured) :
 Wi : Wind
 AT : Air Temperature
 AP : Air Pressure
 dP : Air pressure tendency
 ST : Sea surface Temperature
 Wa : Wave period and height
 Ws : Wave spectra
 Dr : Drogue presence
 Sb : Subsurface temperature
 U : Relative humidity
 SS : Sea surface Salinity

O : Origin of the reports (T = CLS Toulouse, L = CLS America, O = Other)
 Start_end : first and last dates of the month for which GTS data were received at Meteo-France
 Lat : Latitude of the latest position
 Lon : Longitude of the latest position
 Age : Age of the buoy (days)
 DepDate : Date of deployment
 DepLat : Latitude of deployment
 Dep Lon : Longitude of Deployment
 From : Harbour of departure

Definition : An operating drifting buoy is a buoy providing at least air pressure or wind
 (direction and velocity) data.

**E-SURFMAR DB Monthly Report
March 2016**

MOORED BUOYS

Former EGOS stations (K-pattern and Hydrosphere)

WMO	Name	nobs	Wi	AT	AP	dP	ST	Wa	Ws	Dr	Sb	U	SS	O	Start_end	Lat	Lon
6100001	Cote d'Azur	731	X	X	X	X	X	X	X	-	-	X	-	T	0103-3103	43.40	7.80
6100002	Lion	744	X	X	X	-	X	X	X	-	-	X	-	T	0103-3103	42.10	4.70
6200001	Gascogne	744	X	X	X	X	X	X	-	-	-	X	-	O	0103-3103	45.30	-5.00
6200029	K1	-	-	-	-	-	-	-	-	-	-	-	-	-	-	48.70	-12.50
6200081	K2	936	X	X	X	X	X	X	-	-	-	X	-	O	0103-3103	51.00	-13.20
6200090	M1	-	-	-	-	-	-	-	-	-	-	-	-	-	-	53.10	-11.20
6200091	M2	739	X	X	X	-	X	X	-	-	-	X	-	O	0103-3103	53.50	-5.40
6200092	M3	186	X	X	X	-	-	X	-	-	-	-	-	O	1003-3103	51.20	-10.50
6200093	M4	43	S	S	-	-	S	-	-	-	-	-	-	-	0203-0403	54.70	-9.10
6200094	M5	-	-	-	-	-	-	-	-	-	-	-	-	-	-	51.70	-6.70
6200095	M6	-	-	-	-	-	-	-	-	-	-	-	-	-	-	53.10	-15.90
6200105	K4	825	X	X	X	X	X	X	-	-	-	-	-	O	0103-3103	55.80	-11.40
6200108	K3	-	-	-	-	-	-	-	-	-	-	-	-	-	-	53.50	-19.50
6200163	Brittany	742	X	X	X	X	X	X	X	-	-	X	-	O	0103-3103	47.50	-8.40
6400045	K5	860	-	X	X	X	X	X	X	-	-	X	-	O	0103-3103	59.10	-11.70
6400046	K7	744	X	X	X	-	X	X	-	-	-	X	-	O	0103-3103	60.70	-5.20

Comments:

- EUMETNET moored buoys are presented in bold characters.

Former EGOS moored buoys (Spanish SeaWatch and WaveScan)

WMO	Name	nobs	Wi	AT	AP	dP	ST	Wa	Ws	Dr	Sb	U	SS	O	Start_end	Lat	Lon
1300130	Gran Canaria	744	X	X	X	-	X	X	X	-	-	-	-	O	0103-3103	28.18	-15.82
1300131	Tenerife Sur	744	X	X	X	-	X	X	X	-	-	-	-	O	0103-3103	28.00	-16.58
6100196	C. Begur	741	X	X	X	-	-	X	X	-	-	-	-	O	0103-3103	41.92	3.65
6100197	Mahon	646	X	X	X	-	-	X	X	-	-	-	-	O	0103-3103	39.72	4.42
6100198	C. de Gata	743	X	X	X	-	X	X	X	-	-	-	X	O	0103-3103	36.57	-2.33
6100280	Tarragona	402	X	X	X	-	X	X	X	-	-	-	X	O	0203-3103	40.77	1.47
6100281	Valencia	711	X	X	X	-	X	X	X	-	-	-	X	O	0103-3103	39.47	-0.27
6100417	C. de Palos	493	X	X	X	-	X	X	X	-	-	-	X	O	1103-3103	37.65	-0.32
6100430	Dragonera	743	X	X	X	-	S	X	X	-	-	-	-	O	0103-3103	39.56	2.11
6200024	Bilbao-Visc.	744	X	X	X	-	X	X	X	-	-	-	X	O	0103-3103	43.63	-3.03
6200025	C. de Penas	744	X	X	X	-	X	X	X	-	-	-	X	O	0103-3103	43.73	-6.17
6200082	E. de Bares	744	X	-	X	-	X	X	X	-	-	-	X	O	0103-3103	44.13	-7.69
6200083	Villano-Sis.	443	X	X	X	-	X	X	X	-	-	-	X	O	0103-3103	43.48	-9.22
6200084	C. Silleiro	350	X	X	X	-	X	X	X	-	-	-	X	O	1703-3103	42.12	-9.43
6200085	G. de Cadiz	744	X	X	X	-	X	X	X	-	-	-	X	O	0103-3103	36.48	-6.97
6201030	Santander	732	X	X	X	-	X	X	X	-	-	-	X	O	0103-3103	43.84	-3.77

Comments:

- The EUMETNET buoy is presented in bold characters.

Operating POSEIDON moored buoys (Greece)

WMO	Name	nobs	Wi	AT	AP	dP	ST	Wa	Ws	Dr	Sb	U	SS	O	Start_end	Lat	Lon
6101000		-	-	-	-	-	-	-	-	-	-	-	-	-	-	39.10	24.50
6101001		-	-	-	-	-	-	-	-	-	-	-	-	-	-	37.60	23.60
6101002		-	-	-	-	-	-	-	-	-	-	-	-	-	-	37.00	22.10
6101003		206	X	-	X	-	-	X	-	-	-	-	-	O	0103-3103	40.00	24.70

E-SURFMAR DB Monthly Report March 2016

6101004	-	-	-	-	-	-	-	-	-	-	-	-	-	-	39.10	25.80
6101005	-	-	-	-	-	-	-	-	-	-	-	-	-	-	37.50	25.50
6101006	-	-	-	-	-	-	-	-	-	-	-	-	-	-	36.30	25.50
6101007	-	-	-	-	-	-	-	-	-	-	-	-	-	-	35.80	24.90
6101008	190	X	X	-	-	-	X	-	-	-	-	-	O	0103-3003	36.80	21.60
6101009	-	-	-	-	-	-	-	-	-	-	-	-	-	-	38.00	20.60

Other European moored buoys (operated by 3rd parties)

WMO	Name	nobs	Wi	AT	AP	dP	ST	Wa	Ws	Dr	Sb	U	SS	O	Start_end	Lat	Lon
1200050	Cycofos	-	-	-	-	-	-	-	-	-	-	-	-	-	-	33.60	31.90
6100010	Italia-1	-	-	-	-	-	-	-	-	-	-	-	-	-	-	43.80	9.10
6200027	Jersey	262	X	-	X	X	-	X	-	-	-	-	-	O	0103-3103	49.08	-22.20
6200030	L4	10	-	S	S	-	-	-	-	-	-	S	-	-	2303-2303	50.25	-4.22
6200050	E1	455	X	X	X	-	S	X	-	-	-	X	-	O	1503-3103	50.04	-4.37
6200086	NSB II	26	S	S	S	S	S	-	-	-	-	S	-	-	0103-0203	55.00	6.40
6200087	NSB III	-	-	-	-	-	-	-	-	-	-	-	-	-	-	54.70	6.80
6200191	Porto	-	-	-	-	-	-	-	-	-	-	-	-	-	-	41.15	-9.57
6200192	Peniche	-	-	-	-	-	-	-	-	-	-	-	-	-	-	39.50	-9.65
6200303	Turbo Bank	471	S	S	S	S	S	S	-	-	-	-	-	-	0103-2103	51.60	-5.10
6200442	PAP	-	-	-	-	-	-	-	-	-	-	-	-	-	-	49.00	-16.40
6600021	Arkona Becken	732	X	X	-	-	X	-	-	-	-	-	-	O	0103-3103	54.90	13.90
6600022	Oder Bank	-	-	-	-	-	-	-	-	-	-	-	-	-	-	54.10	14.20
6600024	Darsser Schwelle	-	-	-	-	-	-	-	-	-	-	-	-	-	-	54.70	12.70

Other offshore moored buoys inside the EUMETNET area

WMO	Name	nobs	Wi	AT	AP	dP	ST	Wa	Ws	Dr	Sb	U	SS	O	Start_end	Lat	Lon
1300001		684	X	X	X	-	-	-	-	-	-	X	-	O	0103-3103	11.47	-23.00
1300008		744	X	X	X	-	X	-	-	-	-	X	-	L	0103-3103	14.98	-38.02
1300308	East Atlantic	-	-	-	-	-	-	-	-	-	-	-	-	-	-	15.00	-38.00
4100026		615	X	X	-	-	X	-	-	-	-	X	-	L	0103-3103	11.49	-38.40
4100040	West Atlantic	764	X	X	X	X	X	X	-	-	-	X	-	O	0103-3103	14.50	-53.00
4100041	Mid. Atlantic	774	X	X	X	X	X	X	-	-	-	X	-	O	0103-3103	14.50	-46.00
4100043	Porto Rico	775	X	X	X	X	X	X	-	-	-	X	-	O	0103-3103	21.00	-65.00
4100044		770	X	X	X	X	X	X	-	-	-	X	-	O	0103-3103	21.70	-58.70
4100046		771	X	X	X	X	X	X	-	-	-	X	-	O	0103-3103	23.90	-70.90
4100047		-	-	-	-	-	-	-	-	-	-	-	-	-	-	27.50	-71.50
4100048		774	X	X	X	X	X	X	-	-	-	X	-	O	0103-3103	32.00	-69.60
4100049		773	X	X	X	X	X	X	-	-	-	X	-	O	0103-3103	27.50	-53.00
4100139		712	X	X	X	-	X	-	-	-	-	X	-	L	0103-3103	20.02	-37.86
4100300	Antilles	413	X	X	X	-	X	X	-	-	-	X	-	T	0103-3103	15.85	-57.47
4200059	Caraibes	772	X	X	X	X	X	X	-	-	-	X	-	O	0103-3103	15.00	-67.50
4400008	A Nantucket	775	X	X	X	X	X	X	-	-	-	X	-	O	0103-3103	40.50	-69.40
4400011	D Georges Bk	776	-	X	X	X	X	X	-	-	-	X	-	O	0103-3103	41.10	-66.60
4400018	SE Cape Cod	548	S	S	S	S	S	S	-	-	-	S	-	-	0103-2403	41.30	-69.30
4400024	NNE Channel	684	X	X	X	-	X	X	-	-	-	-	-	O	0103-3103	42.30	-65.90
4400137	E Scotia Sl.	740	X	X	X	X	X	X	-	-	-	-	-	O	0103-3103	42.30	-62.00
4400138	SW Gd Banks	-	-	-	-	-	-	-	-	-	-	-	-	-	-	44.30	-53.60
4400139	Beanquereau	725	X	X	X	X	X	X	-	-	-	-	-	O	0103-3103	44.30	-57.10
4400140	Tail of Bk	-	-	-	-	-	-	-	-	-	-	-	-	-	-	43.80	-51.70
4400141	Larentian F	727	X	X	X	X	X	X	-	-	-	-	-	O	0103-3103	43.00	-58.00
4400150	La Have Bk	700	X	-	X	X	X	X	-	-	-	-	-	O	0103-3103	42.50	-64.00

E-SURFMAR DB Monthly Report March 2016

Buoy-QC statistics from Meteo-France model outputs

Datend : Date of the last value received on GTS
Recvd : Total number of values received on GTS
GE : Number of Gross Errors (excluded from bias and sd computations)
bias : Mean differences between observation values and co-located model output values
Std : Standard deviation of differences

Air Pressure (hPa), drifting buoys, March 2016

Datend	WMO	Telcom	Recvd	GE	Bias	Std
20160331	1300868	11686410	744	0	0.3	0.5
20160331	1300869	11688410	744	0	0.1	0.5
20160331	1300871	61516870	724	0	0.5	0.3
20160331	1300872	61611050	744	0	0.5	0.3
20160331	1300881	62958450	513	0	-0.2	0.4
20160331	1300882	62851900	424	0	0.3	0.4
20160331	1500681	61661310	744	0	-0.3	0.3
20160331	1500682	61663300	744	0	0.5	0.7
20160331	1500683	61663370	744	0	0.6	0.4
20160331	1500684	62328350	744	0	-0.5	0.4
20160331	1500685	62854900	744	0	0.2	0.5
20160331	1500686	62959110	744	0	-0.2	0.4
20160331	1500688	62958430	716	0	-0.0	0.4
20160331	1500689	62859770	424	0	-0.1	0.4
20160331	1500690	62953440	421	0	0.0	0.4
20160331	1500691	62959100	397	0	0.1	0.4
20160331	1500692	62852910	375	0	0.0	0.4
20160331	1500693	62955320	375	0	0.1	0.4
20160331	1500694	62958270	323	0	0.1	0.6
20160331	1500695	62859890	247	0	0.3	0.6
20160331	1500696	62956260	207	0	-0.0	0.8
20160331	1500697	62957270	319	0	0.2	0.6
20160331	2500617	61767070	395	6	-0.0	2.4
20160331	2500622	62850900	744	0	0.1	0.4
20160331	2500623	62955110	744	0	0.2	0.4
20160331	4100729	62321360	744	0	0.2	0.6
20160331	4100730	62326350	744	0	0.4	0.8
20160331	4100731	62329360	744	0	0.2	0.6
20160331	4100970	60213790	744	0	0.3	0.7
20160331	4100972	60217780	735	0	-0.0	0.5
20160331	4400513	61475450	744	0	0.6	0.6
20160331	4400515	61476450	744	0	0.1	1.0
20160331	4400517	61477390	744	0	0.3	0.4
20160331	4400546	11160640	744	0	-0.1	0.5
20160314	4400547	60173710	326	8	-0.4	1.2
20160316	4400548	11799230	380	0	0.1	0.9
20160331	4400551	60892140	744	0	0.2	0.6
20160331	4400557	61568540	744	2	0.6	0.8
20160309	4400608	11093800	206	0	0.1	0.8
20160331	4400613	11475040	744	0	-0.1	0.4
20160331	4400614	61661340	738	0	0.0	0.6
20160331	4400624	11341110	737	0	-0.2	0.5
20160331	4400625	61668340	744	0	0.3	1.1
20160331	4400739	61516840	744	19	0.2	1.1
20160331	4400740	11883820	724	0	-0.1	0.6
20160331	4400744	62953450	479	15	0.0	1.6
20160331	4400746	62850730	744	0	0.4	0.4
20160331	4400747	62327370	744	0	0.2	0.5
20160331	4400761	61669320	744	0	-0.2	0.6
20160331	4400765	62325370	712	0	0.1	1.0
20160331	4400766	62326340	744	0	-0.1	0.8
20160331	4400764	61662330	744	0	-0.2	0.7
20160331	4400768	62322360	744	0	0.6	0.7
20160323	4400769	62328360	529	23	-0.1	0.9
20160331	4400772	62950440	744	0	-0.2	0.9
20160331	4400773	11595650	744	0	0.6	0.7
20160331	4400775	61476400	744	0	0.4	0.7
20160331	4400776	61474410	573	0	0.3	0.4
20160331	4400777	62854730	743	0	0.2	0.7
20160331	4400778	61475430	744	0	0.3	0.4
20160331	4400779	62951460	744	0	0.3	1.0
20160331	4400835	60218770	744	0	-0.3	0.4

E-SURFMAR DB Monthly Report March 2016

20160331	4400836	60218680	744	0	0.0	0.4
20160331	4400837	60209590	744	0	-0.1	0.4
20160331	4400839	60205090	744	0	-0.1	0.4
20160331	4400846	60441290	743	0	0.6	0.3
20160331	4400848	60448280	744	0	0.3	0.4
20160331	4400856	62728390	65	0	0.2	0.5
20160331	4400857	62329370	65	0	0.1	0.7
20160331	4400858	62329350	65	0	-0.7	0.7
20160331	4400863	60211690	744	0	-0.5	0.6
20160331	4400866	11793240	744	0	-0.3	0.4
20160331	4400867	11593590	744	0	-0.1	0.5
20160331	4400868	11794230	744	0	0.2	0.9
20160331	4400873	61612060	744	0	0.8	0.5
20160331	4400874	62858910	744	2	0.2	0.8
20160331	4400875	61616040	251	0	-0.0	0.7
20160331	4400878	60528170	743	0	0.5	0.5
20160331	4400885	60218780	744	0	-0.1	0.5
20160331	4400887	60251440	744	0	-0.0	0.4
20160303	4400888	60359010	58	0	0.0	0.6
20160331	4400889	60202320	744	0	-0.0	0.5
20160331	4400890	12000230	744	0	0.1	0.8
20160331	4400891	12007220	744	0	-0.1	0.6
20160331	4400901	61472460	743	1	0.1	0.7
20160331	4400902	61471430	743	0	0.2	0.7
20160331	4400904	61471420	742	0	-0.3	0.7
20160331	4401500	61390930	164	0	0.4	0.5
20160331	4401501	61878860	178	0	0.2	0.6
20160331	4401502	61879840	183	0	0.3	0.7
20160331	4401503	61879850	183	0	0.4	0.6
20160331	4401504	61879860	183	0	0.2	0.7
20160331	6200513	61665360	744	6	-0.3	1.3
20160331	6200539	60891140	744	0	-0.4	0.7
20160331	6200553	11165650	744	0	0.1	0.6
20160331	6200554	62952460	744	0	0.4	0.6
20160331	6200555	61515850	744	0	0.5	0.6
20160331	6200556	61510860	744	0	0.0	0.4
20160331	6200557	62328340	744	0	0.2	0.5
20160331	6200558	62324370	65	0	0.3	0.6
20160331	6200559	62327350	65	0	0.6	0.5
20160331	6200713	11246980	740	0	-0.2	0.6
20160331	6200714	11240980	741	0	-0.2	0.5
20160331	6200940	60203850	744	0	-0.1	0.4
20160331	6200941	60207590	744	0	-0.2	0.4
20160331	6203500	61390940	313	0	0.2	0.4
20160331	6203501	61390950	303	0	0.3	0.4
20160331	6203502	61390960	292	0	0.3	0.4
20160331	6203503	61391920	282	0	-0.2	0.4
20160331	6203504	61391930	319	0	0.3	0.4
20160331	6300646	62951280	65	0	0.1	0.6
20160331	6400519	61518850	744	0	0.2	0.7
20160321	6400521	11470030	495	11	0.9	2.7
20160331	6400523	61510870	540	100	-0.3	1.4
20160331	6400524	61619040	744	0	0.2	0.4
20160313	6400525	60175710	311	0	0.5	1.1
20160331	6400526	61611070	738	1	-0.1	1.2
20160331	6400549	60898120	744	0	-0.2	0.7
20160331	6400551	11795230	744	1	-0.2	1.1
20160331	6400553	62954270	744	0	-0.1	0.5
20160331	6400554	62958280	744	0	0.3	0.6
20160331	6400555	62955280	744	0	0.3	0.5
20160331	6400560	62956270	744	0	0.1	0.6
20160331	6400562	62957280	744	0	-0.0	0.7
20160331	6400606	61515870	744	0	0.5	0.5
20160331	6400623	11470040	562	0	-0.5	1.5
20160331	6400666	60179710	387	0	0.2	1.0
20160331	6400667	61615060	674	0	-0.1	0.8
20160331	6400694	11548420	744	0	-0.2	1.1
20160331	6500514	62954450	744	3	0.2	1.0
20160329	6500515	62858710	395	43	-0.5	2.8
20160331	6500519	61666340	744	0	0.5	0.9
20160331	6500596	61511850	743	0	0.5	0.8
20160331	6500599	62326370	744	0	0.0	0.9
20160331	6500601	62320360	744	0	0.2	0.8
20160331	6500602	62323360	744	0	-0.6	1.1

E-SURFMAR DB Monthly Report March 2016

Air Pressure (hPa), moored buoys, March 2016

Datend	WMO	Telcom	Recvd	GE	Bias	Std
20160331	1300130		744	0	0.2	0.6
20160331	1300131		744	0	0.4	0.5
20160331	6100001		730	1	0.0	0.5
20160331	6100002		744	0	0.3	0.5
20160331	6100196		741	0	-0.1	0.7
20160331	6100197		646	0	-0.9	1.0
20160331	6100198		743	0	0.3	0.7
20160331	6100280		402	0	0.2	0.6
20160331	6100281		711	0	0.1	0.7
20160331	6100417		493	0	0.2	0.6
20160331	6100430		743	0	-0.0	0.7
20160331	6101003		206	0	-0.3	0.8
20160331	6200001		744	0	0.1	0.6
20160331	6200024		744	4	0.3	1.1
20160331	6200025		744	0	0.2	0.6
20160331	6200027		238	0	-0.1	0.6
20160331	6200050		395	0	0.2	0.7
20160331	6200081		742	0	0.1	0.5
20160331	6200082		744	0	0.7	0.6
20160331	6200083		443	0	0.2	0.6
20160331	6200084		350	0	0.3	0.5
20160331	6200085		744	0	0.2	0.5
20160302	6200086		26	0	-0.9	0.7
20160331	6200091		739	0	-0.1	0.6
20160331	6200092		186	2	-0.4	0.5
20160331	6200105		682	2	-0.1	0.6
20160331	6200163		742	0	0.0	0.6
20160321	6200303		350	0	0.6	0.7

Air Temperature (C), moored buoys, March 2016

Datend	WMO	Telcom	Recvd	GE	Bias	Std
20160331	1300130		744	0	0.5	0.5
20160331	1300131		744	0	0.8	0.6
20160331	6100001		730	1	-0.3	0.6
20160331	6100002		744	0	0.0	0.6
20160331	6100196		741	0	-0.1	0.7
20160331	6100197		646	0	2.1	0.7
20160331	6100198		743	0	0.0	0.8
20160331	6100280		402	0	0.5	1.0
20160331	6100281		711	0	-0.0	0.7
20160331	6100417		493	0	0.1	0.5
20160331	6100430		742	0	2.9	1.1
20160330	6101008		190	0	0.8	0.7
20160331	6200001		744	0	-0.3	0.5
20160331	6200024		742	0	0.1	0.7
20160331	6200025		742	0	-0.2	0.8
20160331	6200050		395	0	-0.1	0.6
20160331	6200081		741	0	-0.2	0.6
20160331	6200083		443	0	-0.1	0.4
20160331	6200084		350	0	0.0	0.5
20160331	6200085		744	0	-0.2	0.6
20160302	6200086		25	0	-0.5	1.0
20160331	6200091		739	0	0.1	0.5
20160331	6200092		186	0	-0.8	2.2
20160304	6200093		43	0	-1.5	0.8
20160331	6200105		714	1	-0.3	0.7
20160331	6200163		742	0	-0.2	0.5
20160317	6200303		11	0	-0.1	0.9
20160331	6400045		743	0	-0.4	0.7
20160331	6400046		744	0	-0.5	0.6
20160331	6600021		731	0	0.2	0.7

E-SURFMAR DB Monthly Report March 2016

Wind direction (deg.), moored buoys, March 2016

Datend	WMO	Telcom	Recvd	GE	Bias	Std
20160331	1300130		741	9	12	17
20160331	1300131		744	64	5	24
20160331	6100001		729	12	-3	24
20160331	6100002		741	1	-0	18
20160331	6100196		731	25	-6	23
20160331	6100197		636	12	-12	24
20160331	6100198		713	57	-3	30
20160331	6100280		396	17	1	30
20160331	6100281		706	53	6	37
20160331	6100417		487	17	-8	26
20160331	6100430		739	33	-6	26
20160331	6101003		206	39	-3	48
20160330	6101008		190	56	78	43
20160331	6200001		742	1	-5	13
20160331	6200024		724	5	-6	23
20160331	6200025		741	35	4	26
20160331	6200027		213	4	3	33
20160331	6200050		395	4	2	18
20160331	6200081		741	1	-5	16
20160331	6200082		741	3	-5	15
20160331	6200083		443	4	3	18
20160331	6200084		348	1	2	19
20160331	6200085		735	5	3	22
20160302	6200086		24	0	4	13
20160331	6200091		735	2	1	19
20160331	6200092		186	16	-54	34
20160304	6200093		43	0	4	30
20160331	6200105		630	7	-1	19
20160331	6200163		741	3	0	15
20160321	6200303		409	14	-2	28
20160331	6400046		738	10	6	19
20160331	6600021		730	7	-3	19

Wind speed rate, moored buoys, March 2016

Datend	WMO	Telcom	Recvd	GE	Rate	Err
20160331	1300130		741	0	1.0	2.4
20160331	1300131		744	0	1.1	3.1
20160331	6100001		729	0	1.2	1.8
20160331	6100002		741	0	1.0	1.8
20160331	6100196		731	0	1.0	2.4
20160331	6100197		636	1	1.1	1.8
20160331	6100198		713	1	1.2	3.0
20160331	6100280		396	0	1.1	2.0
20160331	6100281		706	0	1.3	1.9
20160331	6100417		487	0	1.0	1.5
20160331	6100430		739	0	1.2	1.8
20160331	6101003		206	9	0.4	8.1
20160330	6101008		190	0	0.0	0.0
20160331	6200001		742	0	0.9	1.2
20160331	6200024		724	0	1.1	2.0
20160331	6200025		741	0	0.8	2.1
20160331	6200027		213	2	1.0	1.5
20160331	6200050		395	1	1.0	1.4
20160331	6200081		741	0	0.9	1.2
20160331	6200082		741	0	0.9	1.2
20160331	6200083		443	0	0.9	1.3
20160331	6200084		348	0	1.0	2.0
20160331	6200085		735	0	0.9	1.5
20160302	6200086		24	0	1.1	1.4
20160331	6200091		735	1	1.1	2.0
20160331	6200092		186	1	0.1	4.9
20160304	6200093		43	3	0.3	4.0
20160331	6200105		630	0	1.0	1.5
20160331	6200163		741	0	1.0	1.2
20160321	6200303		409	0	1.0	1.8
20160331	6400046		738	2	1.0	1.6
20160331	6600021		730	0	1.1	1.0

Comments on QC statistics :

Air pressure

1. Metocean buoys WMO **4400739**, **6200513** and **6400623** temporarily reported wrong pressure values during February for unknown reasons.
2. Metocean buoy WMO **6500515** reported wrong pressure values between 02th and 14th of March then at the end of the month before transmission was stopped.
3. Metocean buoy WMO **4400744** and **6400523** reported wrong pressure values from early to mid-month before returning then correctly.
4. Metocean buoy WMO **4400769** and **6400521** reported wrong pressure values respectively on 22th and 19th of March before transmission was stopped.
5. Metocean buoy WMO **2500617** reported wrong pressure values during a short time during his return to the GTS at mid-month.

Air Temperature

1. Eumetnet moored buoy M3 WMO **6200092** reported air temperature values since 25th of March with a bias fluctuating between -5°C and +3°C.
2. Eumetnet moored buoy M4 WMO **6200093** reported wrong air temperature values before it was stopped on the 4th of March.
3. Eumetnet Spanish moored buoy WMO **6100197** and **6100430** continued to report air temperature values with a systematic bias of about 2 at 4°C.

Wind

1. Greek moored buoy WMO **6101003** and **6101008** continued to report abnormal calm winds onto the GTS since the beginning of the month.
2. Eumetnet moored buoy M3 WMO **6200092** reported wrong wind values since 25th of March.
3. Eumetnet moored buoy M4 WMO **6200093** reported wrong wind values before it was stopped on the 4th of March.

Monthly QC statistics and other data quality control tools are available on line at :

<http://www.meteo.shom.fr/qctools/>

The working area of the E-SURFMAR website is open at <http://esurfmar.meteo.fr/wikisurf-wa/> . Ask the E-SURFMAR Programme Manager Pierre.Blouch@meteo.fr for the password in case you forgot it. Graphs of system performances June be displayed/downloaded at http://esurfmar.meteo.fr/doc/r/surfmar/others/e-surfmar_monitoring.pdf.