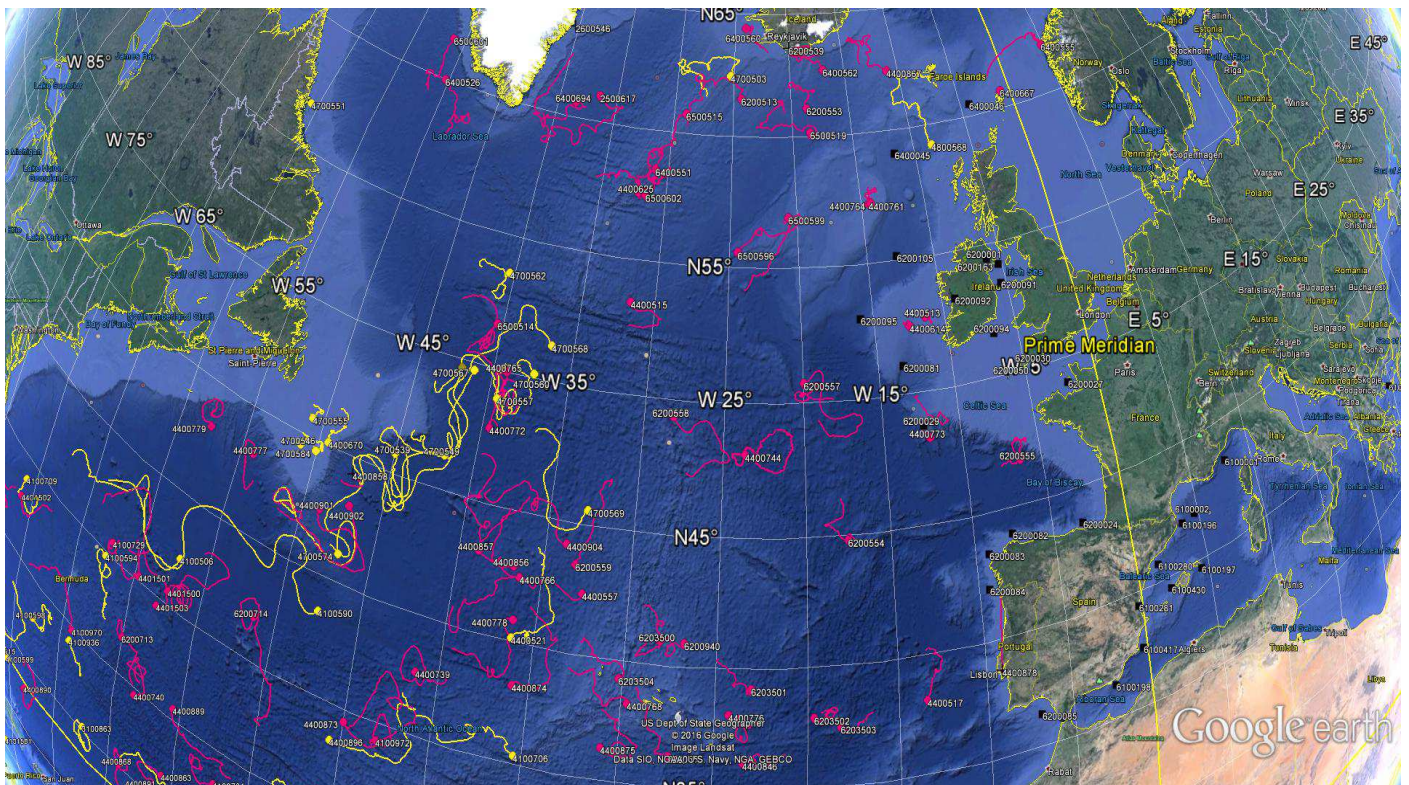


DATA BUOY MONTHLY REPORT

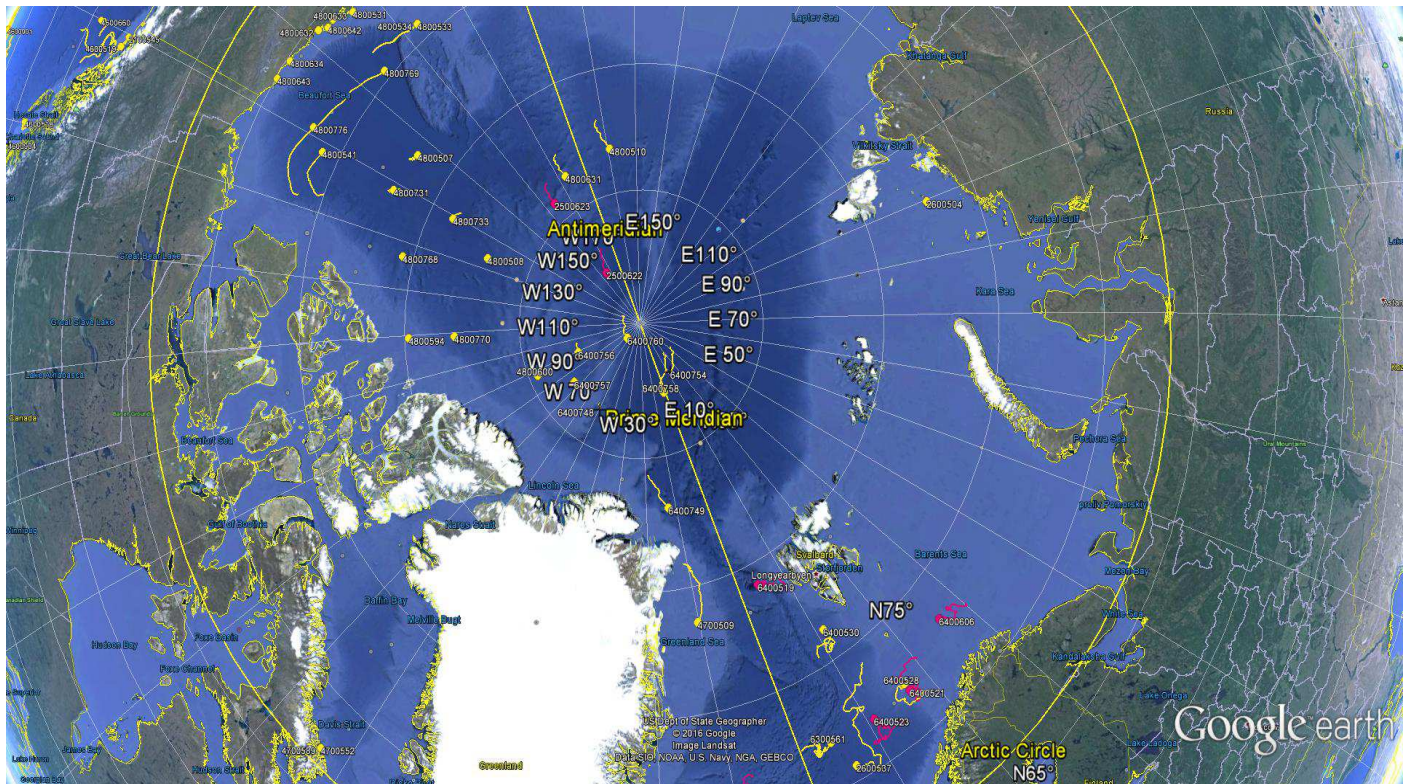
April 2016



*April 2016 : Operating data buoys in the North Atlantic
Drifting buoy trajectories : E-SURFMAR (red), others (yellow)
Moored buoy positions (black)*

*Most recent trajectories may be seen at:
http://www.meteo.shom.fr/cartographie/data/kml/MeteoFrance_buoys_map_15.kmz*

E-SURFMAR DB Monthly Report April 2016



April 2016
Drifting buoy trajectories in Arctic Ocean and adjacent seas : E-SURFMAR (red), others (yellow)

DRIFTING BUOYS

Network status

By the end of April, **130 Drifting buoys**, reporting air pressure onto the GTS, were in operation in the frame of E-SURFMAR. Out of these, 90 were E-SURFMAR funded Iridium SVP-Bs, including 3 deployed in the Arctic, 17 in AtlantOS activities and 3 HRSST-2 buoys. The remaining buoys were: 40 drifters owned by NOAA and upgraded with barometers by E-SURFMAR.

Information about the availability of buoys for future deployments may be get from the E-SURFMAR wikisite (working area) at: http://esurfmar.meteo.fr/wikisurf-wa/index.php/Availability_of_drifting_buoys

Besides E-SURFMAR buoys, 63 drifting buoys were reporting at least air pressure observations from the EUMETNET area of interest.

Operating drifting buoys in North Atlantic by the end of the month

WMO	Telcom	Typ	Ow	nobs	Wi	AT	AP	dP	ST	Wa	Ws	Dr	Sb	U	SS	O	Start_end	Lat	Lon	Age
1300868	11686410	MSB	EU	720	-	-	X	-	X	-	-	X	-	-	-	T	0104-3004	28.80	-15.33	527
1300869	11688410	MSB	EU	720	-	-	X	-	X	-	-	X	-	-	-	T	0104-3004	21.43	-42.64	525
1300871	61516870	MSB	EU	720	-	-	X	-	X	-	-	X	-	-	-	T	0104-3004	28.01	-37.99	413
1300872	61611050	MSB	EU	720	-	-	X	-	X	-	-	X	-	-	-	T	0104-3004	23.90	-34.49	414
2500617	61767070	MSB	EU	720	-	-	X	-	X	-	-	-	-	-	-	T	0104-3004	61.02	-36.52	588
2500622	62850900	MSB	EU	720	-	-	X	-	-	-	-	-	-	-	-	T	0104-3004	87.67	-165.63	237
2500623	62955110	MSB	EU	720	-	-	X	-	-	-	-	-	-	-	-	T	0104-3004	84.23	-163.66	230
4100729	62321360	MSB	EU	720	-	-	X	-	X	-	-	X	-	-	-	T	0104-3004	35.73	-62.10	340
4100730	62326350	MSB	EU	720	-	-	X	-	X	-	-	X	-	-	-	T	0104-3004	29.47	-76.17	339
4100731	62329360	MSB	EU	720	-	-	X	-	X	-	-	X	-	-	-	T	0104-3004	28.32	-52.16	345
4100970	60213790	PSB	UP	720	-	-	X	-	X	-	-	X	-	-	-	T	0104-3004	29.93	-63.95	996
4100972	60217780	PSB	UP	720	-	-	X	-	X	-	-	X	-	-	-	T	0104-3004	34.28	-42.92	996
4400513	61475450	DSB	UP	719	-	-	X	-	X	-	-	X	-	-	-	T	0104-3004	52.78	-11.41	419
4400515	61476450	DSB	UP	719	-	-	X	-	X	-	-	X	-	-	-	T	0104-3004	53.42	-31.64	421
4400517	61477390	DSB	UP	720	-	-	X	-	X	-	-	X	-	-	-	T	0104-3004	38.20	-13.47	418
4400546	11160640	MSB	EU	720	-	-	X	-	X	-	-	X	-	-	-	T	0104-3004	30.22	-45.77	1138
4400551	60892140	MSB	EU	720	-	-	X	-	X	-	-	X	-	-	-	T	0104-3004	67.16	0.46	602
4400557	61568540	DSB	UP	720	-	-	X	-	X	-	-	X	-	-	-	T	0104-3004	42.42	-32.60	291
4400613	11475040	MSB	EU	720	-	-	X	-	X	-	-	X	-	-	-	T	0104-3004	28.76	-44.78	1152
4400614	61661340	MSB	EU	717	-	-	X	-	X	-	-	X	-	-	-	T	0104-3004	52.51	-12.58	732
4400624	11341110	YSB	EU	710	-	-	X	-	X	-	-	X	-	-	-	T	0104-3004	23.96	-47.26	1237
4400625	61668340	MSB	EU	710	-	-	X	-	X	-	-	X	-	-	-	T	0104-3004	57.53	-32.08	730
4400739	61516840	MSB	EU	720	-	-	X	-	X	-	-	X	-	-	-	T	0104-3004	37.75	-41.27	698
4400740	11883820	PSB	UP	241	-	-	X	-	X	-	-	X	-	-	-	T	0104-3004	29.77	-58.34	1393
4400744	62953450	MSB	EU	722	-	-	X	-	X	-	-	X	-	-	-	T	0104-3004	48.13	-23.68	279
4400746	62850730	MSB	EU	720	-	-	X	-	X	-	-	X	-	-	-	T	0104-3004	33.54	-27.89	275
4400747	62327370	MSB	EU	720	-	-	X	-	X	-	-	X	-	-	-	T	0104-3004	50.62	-19.13	181
4400761	61669320	MSB	EU	720	-	-	X	-	X	-	-	X	-	-	-	T	0104-3004	57.26	-14.44	450
4400764	61662330	MSB	EU	720	-	-	X	-	X	-	-	X	-	-	-	T	0104-3004	57.26	-14.27	412
4400765	62325370	MSB	EU	720	-	-	X	-	X	-	-	X	-	-	-	T	0104-3004	50.01	-39.08	180
4400766	62326340	MSB	EU	720	-	-	X	-	X	-	-	X	-	-	-	T	0104-3004	42.57	-36.22	180
4400768	62322360	MSB	EU	720	-	-	X	-	X	-	-	X	-	-	-	T	0104-3004	38.38	-29.65	344
4400772	62950440	MSB	EU	676	-	-	X	-	X	-	-	X	-	-	-	T	0104-3004	47.81	-39.47	132
4400773	11595650	MSB	EU	720	-	-	X	-	-	-	-	X	-	-	-	T	0104-3004	48.29	-12.11	131
4400775	61476400	MSB	EU	722	-	-	X	-	X	-	-	X	-	-	-	T	0104-3004	26.91	-76.50	532
4400776	61474410	DSB	UP	717	-	-	X	-	X	-	-	X	-	-	-	T	0104-3004	38.19	-24.23	531
4400777	62854730	MSB	EU	720	-	-	X	-	X	-	-	X	-	-	-	T	0104-3004	43.25	-54.04	131
4400778	61475430	DSB	UP	719	-	-	X	-	X	-	-	X	-	-	-	T	0104-3004	40.90	-36.27	530
4400779	62951460	MSB	EU	720	-	-	X	-	X	-	-	X	-	-	-	T	0104-3004	43.25	-57.50	131
4400835	60218770	PSB	UP	720	-	-	X	-	X	-	-	X	-	-	-	T	0104-3004	30.52	-22.72	789
4400836	60218680	PSB	UP	720	-	-	X	-	X	-	-	X	-	-	-	T	0104-3004	64.85	8.45	789
4400837	60209490	PSB	UP	720	-	-	X	-	X	-	-	X	-	-	-	T	0104-3004	20.58	-46.06	789
4400839	60205090	PSB	UP	720	-	-	X	-	X	-	-	X	-	-	-	T	0104-3004	30.84	-18.30	789

E-SURFMAR DB Monthly Report April 2016

4400846	60441290	DSB	UP	720	-	-	X	-	X	-	-	X	-	-	-	T	0104-3004	36.21	-23.44	826
4400848	60448280	DSB	UP	719	-	-	X	-	X	-	-	X	-	-	-	T	0104-3004	31.64	-16.92	825
4400856	62728290	MSB	EU	719	-	-	X	-	X	-	-	X	-	-	-	T	0104-3004	42.96	-36.64	35
4400857	62329370	MSB	EU	720	-	-	X	-	X	-	-	X	-	-	-	T	0104-3004	43.21	-38.79	34
4400863	60211690	PSB	UP	720	-	-	X	-	X	-	-	X	-	-	-	T	0104-3004	26.77	-55.70	1020
4400866	11793240	MSB	E2	720	-	-	X	-	X	-	-	X	-	-	-	T	0104-3004	66.34	0.27	680
4400867	11593590	MSB	EU	720	-	-	X	-	X	-	-	X	-	-	-	T	0104-3004	62.38	-11.05	678
4400868	11794230	MSB	E2	720	-	-	X	-	X	-	-	X	-	-	-	T	0104-3004	25.33	-58.88	1089
4400873	61612060	MSB	EU	720	-	-	X	-	X	-	-	X	-	-	-	T	0104-3004	34.51	-44.87	271
4400874	62858910	MSB	EU	720	-	-	X	-	X	-	-	X	-	-	-	T	0104-3004	38.31	-35.89	274
4400875	61616040	MSB	EU	720	-	-	X	-	X	-	-	X	-	-	-	T	0104-3004	36.44	-30.88	271
4400885	60218780	PSB	UP	720	-	-	X	-	X	-	-	X	-	-	-	T	0104-3004	24.87	-22.28	702
4400887	60251440	PSB	UP	720	-	-	X	-	X	-	-	X	-	-	-	T	0104-3004	31.17	-39.55	704
4400889	60202320	PSB	UP	720	-	-	X	-	X	-	-	X	-	-	-	T	0104-3004	30.64	-55.42	703
4400890	12000230	PSB	UP	720	-	-	X	-	X	-	-	X	-	-	-	T	0104-3004	23.19	-68.11	702
4400891	12007220	PSB	UP	720	-	-	X	-	X	-	-	X	-	-	-	T	0104-3004	25.28	-56.93	700
4400901	61472460	DSB	UP	720	-	-	X	-	X	-	-	X	-	-	-	T	0104-3004	42.54	-48.80	75
4400902	61471430	DSB	UP	720	-	-	X	-	X	-	-	X	-	-	-	T	0104-3004	43.16	-47.02	75
4400904	61471420	DSB	UP	719	-	-	X	-	X	-	-	X	-	-	-	T	0104-3004	44.19	-33.78	74
4401500	61390930	DSB	UP	716	-	-	X	-	X	-	-	X	-	-	-	T	0104-3004	35.69	-57.30	37
4401501	61878860	DSB	UP	719	-	-	X	-	X	-	-	X	-	-	-	T	0104-3004	35.31	-59.61	38
4401502	61879840	DSB	UP	720	-	-	X	-	X	-	-	X	-	-	-	T	0104-3004	33.04	-71.05	39
4401503	61879850	DSB	UP	720	-	-	X	-	X	-	-	X	-	-	-	T	0104-3004	34.70	-57.88	38
4401504	61879860	DSB	UP	720	-	-	X	-	X	-	-	X	-	-	-	T	0104-3004	31.28	-73.35	39
6200513	61665360	MSB	EU	720	-	-	X	-	X	-	-	X	-	-	-	T	0104-3004	61.50	-24.34	451
6200553	11165650	MSB	EU	720	-	-	X	-	X	-	-	X	-	-	-	T	0104-3004	61.12	-18.70	1134
6200554	62952460	MSB	EU	714	-	-	X	-	X	-	-	X	-	-	-	T	0104-3004	44.85	-17.59	272
6200555	61515850	MSB	EU	719	-	-	X	-	X	-	-	X	-	-	-	T	0104-3004	46.75	-6.49	273
6200556	61510860	MSB	EU	720	-	-	X	-	X	-	-	X	-	-	-	T	0104-3004	36.38	-27.32	272
6200557	62328340	MSB	EU	719	-	-	X	-	X	-	-	X	-	-	-	T	0104-3004	50.74	-19.97	182
6200558	62324370	MSB	EU	714	-	-	X	-	X	-	-	X	-	-	-	T	0104-3004	49.40	-28.16	36
6200559	62327350	MSB	EU	665	-	-	X	-	X	-	-	X	-	-	-	T	0104-3004	43.48	-33.16	35
6200713	11246980	YSB	EU	717	-	-	X	-	X	-	-	X	-	-	-	T	0104-3004	32.01	-59.90	1236
6200714	11240980	YSB	EU	720	-	-	X	-	X	-	-	X	-	-	-	T	0104-3004	37.00	-51.31	1233
6200940	60203850	PSG	UP	720	-	-	X	-	X	-	-	X	-	-	-	T	0104-3004	40.96	-26.77	699
6200941	60207590	PSG	UP	720	-	-	X	-	X	-	-	X	-	-	-	T	0104-3004	29.36	-18.20	699
6203500	61390940	DSB	UP	719	-	-	X	-	X	-	-	X	-	-	-	T	0104-3004	40.97	-28.11	44
6203501	61390950	DSB	UP	720	-	-	X	-	X	-	-	X	-	-	-	T	0104-3004	39.24	-23.07	43
6203502	61390960	DSB	UP	720	-	-	X	-	X	-	-	X	-	-	-	T	0104-3004	38.00	-19.67	43
6203503	61391920	DSB	UP	720	-	-	X	-	X	-	-	X	-	-	-	T	0104-3004	37.56	-18.25	42
6203504	61391930	DSB	UP	720	-	-	X	-	X	-	-	X	-	-	-	T	0104-3004	39.34	-30.19	44
6300646	62951280	MSB	EU	720	-	-	X	-	X	-	-	X	-	-	-	T	0104-3004	65.27	1.92	34
6400519	61518850	MSB	EU	720	-	-	X	-	X	-	-	X	-	-	-	T	0104-3004	79.18	4.27	469
6400521	11470030	MSB	EU	720	-	-	X	-	X	-	-	X	-	-	-	T	0104-3004	72.00	16.93	1084
6400523	61510870	MSB	EU	679	-	-	X	-	X	-	-	X	-	-	-	T	0104-3004	71.99	10.92	539
6400524	61619040	MSB	EU	720	-	-	X	-	X	-	-	X	-	-	-	T	0104-3004	66.92	13.42	539
6400526	61611070	MSB	EU	695	-	-	X	-	X	-	-	X	-	-	-	T	0104-3004	59.97	-50.23	537
6400528	61471310	DSB	UP	720	-	-	X	-	X	-	-	X	-	-	-	T	0104-3004	72.37	16.82	319
6400530	61470290	DSB	UP	720	-	-	X	-	X	-	-	X	-	-	-	T	0104-3004	76.28	11.29	319
6400547	61473300	DSB	UP	720	-	-	X	-	X	-	-	X	-	-	-	T	0104-3004	70.09	1.59	318
6400549	60898120	MSB	EU	720	-	-	X	-	X	-	-	X	-	-	-	T	0104-3004	66.93	-21.37	316
6400551	11795230	MSB	E2	720	-	-	X	-	X	-	-	X	-	-	-	T	0104-3004	58.49	-31.00	313
6400553	62954270	MSB	EU	720	-	-	X	-	X	-	-	X	-	-	-	T	0104-3004	67.98	1.92	232
6400554	62958280	MSB	EU	720	-	-	X	-	X	-	-	X	-	-	-	T	0104-3004	66.09	-26.12	231
6400555	62955280	MSB	EU	720	-	-	X	-	X	-	-	X	-	-	-	T	0104-3004	61.97	4.78	162
6400560	62956270	MSB	EU	720	-	-	X	-	X	-	-	X	-	-	-	T	0104-3004	64.40	-23.97	162
6400562	62957280	MSB	EU	720	-	-	X	-	X	-	-	X	-	-	-	T	0104-3004	62.65	-16.95	90
6400606	61515870	MSB	EU	720	-	-	X	-	X	-	-	X	-	-	-	T	0104-3004	73.23	26.16	465
6400623	11470040	MSB	EU	720	-	-	X	-	X	-	-	X	-	-	-	T	0104-3004	66.93	-13.90	1085
6400666	60179710	MSB	EU	720	-	-	X	-	X	-	-	X	-	-	-	T	0104-3004	70.24	-10.01	885
6400667	61615060	MSB	EU	650	-	-	X	-	X	-	-	X	-	-	-	T	0104-3004	60.70	-1.00	857
6400694	11548420	MSB	UP	720	-	-	X	-	X	-	-	X	-	-	-	T	0104-3004	60.60	-38.46	134
6500514	62954450	MSB	EU	720	-	-	X	-	X	-	-	X	-	-	-	T	0104-3004	51.66	-40.36	282
6500515	62858710	MSB	EU	720	-	-	X	-	X	-	-	X	-	-	-	T	0104-3004	60.77	-28.98	258
6500519	61666340	MSB	EU	720	-	-	X	-	X	-	-	X	-	-	-	T	0104-3004	60.16	-18.55	133
6500596	61511850	MSB	EU	714	-	-	X	-	X	-	-	X	-	-	-	T	0104-3004	55.59	-24.42	682
6500599	62326370	MSB	EU	720	-	-	X	-	X	-	-	X	-	-	-	T	0104-3004	56.91	-20.66	357
6500601	62320360	MSB	EU	720	-	-	X	-	X	-	-	X	-	-	-	T	0104-3004	61.65	-51.12	354
6500602	62323360	MSB	EU	720	-	-	X	-	X	-	-	X	-	-	-	T	0104-3004	57.46	-31.53	354
6500603	62959440	MSB	EU	134	-	-	X	-	X	-	-	X	-	-	-	T	2504-3004	68.01	-53.72	231

E-SURFMAR DB Monthly Report April 2016

Operating AtlantOS drifting buoys by the end of the month

WMO	Telcom	Typ	Ow	nobs	Wi	AT	AP	dP	ST	Wa	Ws	Dr	Sb	U	SS	O	Start_end	Lat	Lon	Age
1300881	62958450	MSB	EU	720	-	-	X	-	X	-	-	X	-	-	-	T	0104-3004	6.70	-24.09	52
1300882	62851900	MSB	EU	720	-	-	X	-	X	-	-	X	-	-	-	T	0104-3004	5.53	-21.03	51
1500681	61661310	MSB	EU	720	-	-	X	-	X	-	-	X	-	-	-	T	0104-3004	-20.35	-37.17	379
1500682	61663300	MSB	EU	720	-	-	X	-	X	-	-	X	-	-	-	T	0104-3004	-15.00	-11.92	380
1500683	61663370	MSB	EU	720	-	-	X	-	X	-	-	X	-	-	-	T	0104-3004	-18.04	-36.69	381
1500685	62854900	MSB	EU	721	-	-	X	-	X	-	-	X	-	-	-	T	0104-3004	-15.76	-20.69	249
1500686	62959110	MSB	EU	720	-	-	X	-	X	-	-	X	-	-	-	T	0104-3004	-8.71	-23.63	248
1500688	62958430	MSB	EU	684	-	-	X	-	X	-	-	X	-	-	-	T	0104-3004	-0.99	-44.38	247
1500689	62859770	MSB	EU	720	-	-	X	-	X	-	-	X	-	-	-	T	0104-3004	-6.24	-31.30	49
1500690	62953440	MSB	EU	720	-	-	X	-	X	-	-	X	-	-	-	T	0104-3004	-0.36	-45.03	48
1500691	62959100	MSB	EU	720	-	-	X	-	X	-	-	X	-	-	-	T	0104-3004	-8.47	-23.54	47
1500692	62852910	MSB	EU	720	-	-	X	-	X	-	-	X	-	-	-	T	0104-3004	-7.62	-21.39	47
1500693	62955320	MSB	EU	720	-	-	X	-	X	-	-	X	-	-	-	T	0104-3004	-10.20	-23.08	46
1500694	62958270	MSB	EU	720	-	-	X	-	X	-	-	X	-	-	-	T	0104-3004	-11.24	-13.63	45
1500695	62859890	MSB	EU	720	-	-	X	-	X	-	-	X	-	-	-	T	0104-3004	-5.71	-19.11	41
1500696	62956260	MSB	EU	720	-	-	X	-	X	-	-	X	-	-	-	T	0104-3004	1.82	-4.99	39
1500697	62957270	MSB	EU	720	-	-	X	-	X	-	-	X	-	-	-	T	0104-3004	-12.35	-13.21	44

Drifting buoys which ceased to be operational

WMO	Telcom	Typ	Ow	End_Date	Lat	Lon	Age	Cause
1500684	62328350	MSB	EU	20160418	-5.1	-35.9	368	Ashore in Brazil
4100969	60213780	PSB	UP	20160416	28.9	-63.3	983	Faded (Battery empty)
4400858	62329350	MSB	EU	20160407	44.4	-47.3	10	Unknown
4400878	60528170	PSB	UP	20160412	38.8	-9.1	800	Recovered by IPMA of Lisbon
6200539	60891140	MSB	EU	20160428	63.6	-20.0	602	Ashore in Iceland
6400522	61511870	MSB	EU	20160418	71.5	-13.1	605	Unknown
6400561	62950280	MSB	EU	20160424	63.6	-12.9	85	Unknown

Non-operating drifting buoys reporting GTS data

WMO	Telcom	Typ	Ow	nobs	Wi	AT	AP	dP	ST	Wa	Ws	Dr	Sb	U	SS	O	Start_end	Lat	Lon	Age
4400604	11794240	MSB	E2	720	-	-	-	-	X	-	-	X	-	-	-	T	0104-3004	47.04	-14.97	571
4400745	62956440	MSB	EU	720	-	-	-	-	X	-	-	X	-	-	-	T	0104-3004	36.01	-29.00	276
4400769	62328360	MSB	EU	720	-	-	-	-	X	-	-	X	-	-	-	T	0104-3004	33.05	-69.99	318
4400869	61615050	MSB	EU	720	-	-	-	-	X	-	-	X	-	-	-	T	0104-3004	40.56	-27.29	270

Other operating drifting buoys inside the EUMETNET area by the end of the month

WMO	Telcom	Owner	nobs	Wi	AT	AP	dP	ST	Wa	Ws	Dr	Sb	U	SS	O	Start_end	Lat	Lon
1300515	114951	AOML	683	-	-	X	-	X	-	-	X	-	-	-	L	0104-3004	26.08	-51.62
1300519	127004	AOML	688	-	-	X	S	X	-	-	X	-	-	-	L	0104-3004	19.59	-53.05
1300530	114916	AOML	671	-	-	X	-	X	-	-	X	-	-	-	L	0104-3004	12.93	-25.11
1300572	127002	AOML	708	-	-	X	S	X	-	-	X	-	-	-	L	0104-3004	33.31	-19.90
1300575	63220960	CMM	720	-	-	X	-	X	-	-	X	-	-	-	T	0104-3004	8.92	-26.06
1300576	63126380	CMM	718	-	-	X	-	X	-	-	X	-	-	-	T	0104-3004	4.45	-26.86
1300577	63220600	CMM	719	-	-	X	-	X	-	-	X	-	-	-	T	0104-3004	5.05	-20.05
1300592	132696	AOML	696	-	-	X	S	X	-	-	X	-	-	-	L	0104-3004	12.94	-31.35
1300593	132697	AOML	680	-	-	X	S	X	-	-	X	-	-	-	L	0104-3004	7.69	-29.10
1300633	109491	AOML	712	-	-	X	S	X	-	-	X	-	-	-	L	0104-3004	27.72	-33.68
1300661	62325770	Metec	720	-	-	X	-	-	-	-	X	-	-	-	T	0104-3004	17.62	-52.65
1300665	62327760	Metec	718	-	-	X	-	-	-	-	X	-	-	-	T	0104-3004	22.60	-28.06
1301500	63122380	CMM	112	-	-	X	-	X	-	-	X	-	-	-	T	2604-3004	17.20	-33.85
1301501	63123380	CMM	112	-	-	X	-	X	-	-	X	-	-	-	T	2604-3004	17.40	-31.14
1301502	63124390	CMM	112	-	-	X	-	X	-	-	X	-	-	-	T	2604-3004	17.13	-28.04
1500951	10450430	CMM	527	-	-	X	-	-	-	-	X	-	-	-	T	0104-3004	4.00	9.21
1500953	11145830	CMM	567	-	-	X	-	X	-	-	X	-	-	-	T	0104-3004	-14.93	6.86

E-SURFMAR DB Monthly Report April 2016

1500954	63127390	CMM	718	-	-	X	-	X	-	-	X	-	-	-	T	0104-3004	-0.14	-44.50
1501500	62448630	AOML	723	-	-	X	X	X	-	-	X	-	-	-	O	0104-3004	-6.11	-13.83
1501501	62441640	AOML	642	-	-	X	X	X	-	-	X	-	-	-	O	0104-3004	-4.80	-26.91
1501502	62448650	AOML	723	-	-	X	X	X	-	-	X	-	-	-	O	0104-3004	-13.22	-11.88
1501503	62440650	AOML	724	-	-	X	X	X	-	-	X	-	-	-	O	0104-3004	-14.89	-5.19
1501505	62445650	AOML	721	-	-	X	X	X	-	-	X	-	-	-	O	0104-3004	-16.35	-4.61
2100942	119223	UKMO	703	-	-	X	S	X	-	-	X	-	-	-	L	0104-3004	27.11	-46.34
2500575	137812	APL	1037	-	-	X	S	X	-	-	-	-	-	-	L	0104-3004	65.90	-35.99
2600537	61369210	IABP	720	-	-	X	X	X	-	-	X	-	-	-	O	0104-3004	70.69	6.08
2600545	62556750	IABP	720	-	-	S	X	S	-	-	X	-	-	-	O	0104-3004	65.97	-4.47
3100706	116301	AOML	695	-	-	X	S	X	-	-	X	-	-	-	L	0104-3004	5.34	-31.99
3100708	116302	AOML	705	-	-	X	S	X	-	-	X	-	-	-	L	0104-3004	4.82	-28.13
3100863	61611040	CMM	645	-	-	X	-	X	-	-	X	-	-	-	T	0104-3004	25.39	-62.15
4100506	114944	AOML	699	-	-	X	-	X	-	-	X	-	-	-	L	0104-3004	37.39	-56.97
4100590	132676	AOML	715	-	-	X	S	X	-	-	X	-	-	-	L	0104-3004	38.61	-47.49
4100594	127029	AOML	718	-	-	X	S	X	-	-	X	-	-	-	L	0104-3004	34.89	-62.41
4100597	61512840	AOML	720	-	-	X	-	X	-	-	X	-	-	-	T	0104-3004	26.26	-54.90
4100598	61610040	AOML	720	-	-	X	-	X	-	-	X	-	-	-	T	0104-3004	28.09	-67.66
4100635	61475300	CMM	719	-	-	X	-	X	-	-	X	-	-	-	T	0104-3004	23.64	-51.34
4100638	62955440	CMM	720	-	-	-	-	X	-	-	X	-	-	-	T	0104-3004	18.37	-64.45
4100706	11595580	AOML	720	-	-	X	-	X	-	-	X	-	-	-	T	0104-3004	35.43	-35.41
4100707	62957110	CMM	720	-	-	X	-	-	-	-	X	-	-	-	T	0104-3004	13.77	-61.05
4100708	62958100	CMM	720	-	-	X	-	X	-	-	X	-	-	-	T	0104-3004	16.75	-47.01
4100709	11598570	CMM	720	-	-	X	-	X	-	-	X	-	-	-	T	0104-3004	34.07	-71.04
4100711	11477030	CMM	720	-	-	X	-	X	-	-	X	-	-	-	T	0104-3004	29.56	-22.54
4100936	109488	AOML	127	-	-	X	S	-	-	-	X	-	-	-	L	2104-3004	29.28	-64.06
4100975	109439	AOML	715	-	-	X	S	X	-	-	X	-	-	-	L	0104-3004	26.03	-28.01
4400521	133133	AOML	717	-	-	X	S	X	-	-	X	-	-	-	L	0104-3004	40.19	-36.25
4400558	123286	AOML	706	-	-	X	S	X	-	-	X	-	-	-	L	0104-3004	29.05	-46.95
4400670			720	-	-	X	-	X	-	-	X	-	-	-	O	0104-3004	45.15	-49.36
4400896	109438	AOML	715	-	-	X	S	X	-	-	X	-	-	-	L	0104-3004	33.46	-45.52
4700503	137813	APL	952	-	-	X	S	X	-	-	-	-	-	-	L	0104-3004	62.41	-25.32
4700509	62553800	IABP	734	-	-	X	X	X	-	-	X	-	-	-	O	0104-3004	78.62	-10.25
4700539	63512980	DFO	720	-	-	X	X	X	-	-	X	-	-	-	O	0104-3004	45.78	-44.96
4700540	63515680	DFO	720	-	-	X	X	X	-	-	X	-	-	-	O	0104-3004	49.71	-42.01
4700546	63617000	DFO	717	-	-	X	-	X	-	-	X	-	-	-	O	0104-3004	44.57	-51.11
4700549	63516680	DFO	720	-	-	X	X	X	-	-	X	-	-	-	O	0104-3004	46.35	-41.90
4700551	60435010	EC	720	-	-	X	S	X	-	-	X	-	-	-	O	0104-3004	56.70	-60.67
4700552		EC	719	-	-	X	S	-	-	-	X	-	-	-	O	0104-3004	67.39	-63.26
4700555			720	-	-	X	S	X	-	-	X	-	-	-	O	0104-3004	45.75	-50.81
4700557	63123370	DFO	720	-	-	X	X	X	-	-	X	-	-	-	O	0104-3004	48.95	-39.36
4700560			719	-	-	X	S	X	-	-	X	-	-	-	O	0104-3004	50.17	-37.29
4700562	63515630	DFO	720	-	-	X	-	X	-	-	X	-	-	-	O	0104-3004	53.62	-40.32
4700567	63518580	DFO	723	-	-	X	X	X	-	-	X	-	-	-	O	0104-3004	49.76	-41.19
4700568	63517970	DFO	627	-	-	X	X	X	-	-	X	-	-	-	O	0104-3004	51.33	-36.47
4700569	63514970	DFO	674	-	-	X	-	X	-	-	X	-	-	-	O	0104-3004	45.57	-32.78
4700574			720	-	-	X	X	X	-	-	X	-	-	-	O	0104-3004	41.18	-47.02
4700584	63614000	DFO	720	-	-	X	-	X	-	-	X	-	-	-	O	0104-3004	44.61	-50.01
4700589	61762030	EC	720	-	-	X	X	X	-	-	X	-	-	-	O	0104-3004	67.39	-63.30
4800568	61363210	IABP	720	-	-	X	S	X	-	-	X	-	-	-	O	0104-3004	59.21	-8.46
6300561	60654200	AOML	717	-	-	X	-	X	-	-	X	-	-	-	L	0104-3004	72.11	4.36
6400748	62782480	AWI	1284	-	-	X	X	X	X	-	-	X	-	-	O	0104-2804	86.41	-49.32
6400749	62784540	AWI	1410	-	-	X	X	X	-	-	X	-	-	-	O	0104-3004	83.09	-12.45
6400758	61188690	AWI	720	-	-	X	S	X	-	-	X	-	-	-	O	0104-3004	87.28	-1.23
6400760	62888930	AWI	13	-	-	X	-	X	-	-	X	-	-	-	O	2904-3004	89.25	-64.51

Abbreviations

WMO : WMO id.
Telcom : Telcom id.
Typ : Buoy type
 - first character : Manufacturer (D = DBI , M = Metocean, P = Pacific Gyre
 T = Technocean, Y = Marlin-Yug...)
 - second character : Main type (F = FGGE, I = ICEB, S = SVP)
 - third character : Sub type (B = barometer buoy, W = Wind buoy,
 S = Salinity buoy)
Ow : Buoy owner (country code or EU for EUCOS, E2 for HRSST-2 buoys, UP for upgraded
 buoys)
Owner : Buoy owner for non EUCOS buoys
Nobs : number of GTS reports received at Meteo-France
Parameters (X = OK, S = stopped, - = not measured) :
 Wi : Wind
 AT : Air Temperature
 AP : Air Pressure
 dP : Air pressure tendency
 ST : Sea surface Temperature
 Wa : Wave period and height
 Ws : Wave spectra
 Dr : Drogue presence
 Sb : Subsurface temperature
 U : Relative humidity
 SS : Sea surface Salinity
O : Origin of the reports (T = CLS Toulouse, L = CLS America, O = Other)
Start_end : first and last dates of the month for which GTS data were received at Meteo-France
Lat : Latitude of the latest position
Lon : Longitude of the latest position
Age : Age of the buoy (days)
DepDate : Date of deployment
DepLat : Latitude of deployment
Dep Lon : Longitude of Deployment
From : Harbour of departure

Definition : An operating drifting buoy is a buoy providing at least air pressure or wind
(direction and velocity) data.

**E-SURFMAR DB Monthly Report
April 2016**

MOORED BUOYS

Former EGOS stations (K-pattern and Hydrosphere)

WMO	Name	nobs	Wi	AT	AP	dP	ST	Wa	Ws	Dr	Sb	U	SS	O	Start_end	Lat	Lon
6100001	Cote d'Azur	702	X	X	X	X	X	X	X	-	-	X	-	T	0104-3004	43.40	7.80
6100002	Lion	719	X	X	X	-	X	X	X	-	-	X	-	T	0104-3004	42.10	4.70
6200001	Gascogne	663	X	X	X	X	X	X	-	-	-	X	-	O	0104-2804	45.30	-5.00
6200029	K1	71	X	X	X	X	X	X	-	-	-	X	-	O	2804-3004	48.70	-12.50
6200081	K2	923	X	X	X	X	X	X	-	-	-	X	-	O	0104-3004	51.00	-13.20
6200090	M1	-	-	-	-	-	-	-	-	-	-	-	-	-	-	53.10	-11.20
6200091	M2	709	X	X	X	-	X	X	-	-	-	S	-	O	0104-3004	53.50	-5.40
6200092	M3	85	S	S	S	-	-	S	-	-	-	-	-	-	0104-0404	51.20	-10.50
6200093	M4	-	-	-	-	-	-	-	-	-	-	-	-	-	-	54.70	-9.10
6200094	M5	40	X	X	X	-	X	X	-	-	-	X	-	O	2904-3004	51.70	-6.70
6200095	M6	538	X	X	X	X	X	X	-	-	-	X	-	O	1104-3004	53.10	-15.90
6200105	K4	817	X	X	X	X	X	X	-	-	-	-	-	O	0104-3004	55.80	-11.40
6200108	K3	-	-	-	-	-	-	-	-	-	-	-	-	-	-	53.50	-19.50
6200163	Brittany	661	X	X	X	X	X	X	X	-	-	X	-	O	0104-2804	47.50	-8.40
6400045	K5	830	-	X	X	X	X	X	-	-	-	X	-	O	0104-3004	59.10	-11.70
6400046	K7	719	X	X	X	-	S	X	-	-	-	X	-	O	0104-3004	60.70	-5.20

Comments:

- EUMETNET moored buoys are presented in bold characters.

Former EGOS moored buoys (Spanish SeaWatch and WaveScan)

WMO	Name	nobs	Wi	AT	AP	dP	ST	Wa	Ws	Dr	Sb	U	SS	O	Start_end	Lat	Lon
1300130	Gran Canaria	720	X	X	X	-	X	X	X	-	-	-	-	O	0104-3004	28.18	-15.82
1300131	Tenerife Sur	719	X	X	X	-	X	X	X	-	-	-	-	O	0104-3004	28.00	-16.58
6100196	C. Begur	719	X	X	X	-	-	X	X	-	-	-	-	O	0104-3004	41.92	3.65
6100197	Mahon	720	X	X	X	-	-	X	X	-	-	-	-	O	0104-3004	39.72	4.42
6100198	C. de Gata	720	X	X	X	-	X	X	X	-	-	-	X	O	0104-3004	36.57	-2.33
6100280	Tarragona	720	X	X	X	-	X	X	X	-	-	-	X	O	0104-3004	40.77	1.47
6100281	Valencia	720	X	X	X	-	X	X	X	-	-	-	X	O	0104-3004	39.47	-0.27
6100417	C. de Palos	720	X	X	X	-	X	X	X	-	-	-	X	O	0104-3004	37.65	-0.32
6100430	Dragonera	720	X	X	X	-	-	X	X	-	-	-	-	O	0104-3004	39.56	2.11
6200024	Bilbao-Visc.	674	X	X	X	-	X	X	X	-	-	-	X	O	0104-3004	43.63	-3.03
6200025	C. de Penas	657	X	X	X	-	X	X	X	-	-	-	X	O	0104-3004	43.73	-6.17
6200082	E. de Bares	711	X	X	X	-	X	X	X	-	-	-	X	O	0104-3004	44.13	-7.69
6200083	Villano-Sis.	720	X	X	X	-	X	X	X	-	-	-	X	O	0104-3004	43.48	-9.22
6200084	C. Silleiro	720	X	X	X	-	X	X	X	-	-	-	X	O	0104-3004	42.12	-9.43
6200085	G. de Cadiz	720	X	X	X	-	X	X	X	-	-	-	X	O	0104-3004	36.48	-6.97
6201030	Santander	624	X	X	X	-	X	X	X	-	-	-	X	O	0104-3004	43.84	-3.77

Comments:

- The EUMETNET buoy is presented in bold characters.

Operating POSEIDON moored buoys (Greece)

WMO	Name	nobs	Wi	AT	AP	dP	ST	Wa	Ws	Dr	Sb	U	SS	O	Start_end	Lat	Lon
6101000		-	-	-	-	-	-	-	-	-	-	-	-	-	-	39.10	24.50
6101001		-	-	-	-	-	-	-	-	-	-	-	-	-	-	37.60	23.60
6101002		-	-	-	-	-	-	-	-	-	-	-	-	-	-	37.00	22.10
6101003		40	S	-	S	-	-	S	-	-	-	-	-	-	0104-0604	40.00	24.70
6101004		-	-	-	-	-	-	-	-	-	-	-	-	-	-	39.10	25.80
6101005		-	-	-	-	-	-	-	-	-	-	-	-	-	-	37.50	25.50
6101006		-	-	-	-	-	-	-	-	-	-	-	-	-	-	36.30	25.50
6101007		-	-	-	-	-	-	-	-	-	-	-	-	-	-	35.80	24.90
6101008		-	-	-	-	-	-	-	-	-	-	-	-	-	-	36.80	21.60
6101009		-	-	-	-	-	-	-	-	-	-	-	-	-	-	38.00	20.60

E-SURFMAR DB Monthly Report April 2016

Other European moored buoys (operated by 3rd parties)

WMO	Name	nobs	Wi	AT	AP	dP	ST	Wa	Ws	Dr	Sb	U	SS	O	Start_end	Lat	Lon
1200050	Cycofos		-	-	-	-	-	-	-	-	-	-	-			33.60	31.90
6100010	Italia-1		-	-	-	-	-	-	-	-	-	-	-			43.80	9.10
6200027	Jersey	238	X	-	X	X	-	X	-	-	-	-	-	O	0104-3004	49.08	-22.20
6200030	L4	643	X	X	X	-	-	-	-	-	-	X	-	O	0404-3004	50.25	-4.22
6200050	E1	828	X	X	X	-	-	X	-	-	-	X	-	O	0104-3004	50.04	-4.37
6200086	NSB II		-	-	-	-	-	-	-	-	-	-	-			55.00	6.40
6200087	NSB III		-	-	-	-	-	-	-	-	-	-	-			54.70	6.80
6200191	Porto		-	-	-	-	-	-	-	-	-	-	-			41.15	-9.57
6200192	Peniche		-	-	-	-	-	-	-	-	-	-	-			39.50	-9.65
6200303	Turbo Bank		-	-	-	-	-	-	-	-	-	-	-			51.60	-5.10
6200442	PAP		-	-	-	-	-	-	-	-	-	-	-			49.00	-16.40
6600021	Arkona Becken	661	X	X	-	-	X	-	-	-	-	S	-	O	0304-3004	54.90	13.90
6600022	Oder Bank		-	-	-	-	-	-	-	-	-	-	-			4.10	14.20
6600024	Darsser Schwelle		-	-	-	-	-	-	-	-	-	-	-			54.70	12.70

Other offshore moored buoys inside the EUMETNET area

WMO	Name	nobs	Wi	AT	AP	dP	ST	Wa	Ws	Dr	Sb	U	SS	O	Start_end	Lat	Lon
1300001		696	X	X	X	-	-	-	-	-	-	X	-	O	0104-3004	11.47	-23.00
1300008		697	X	X	X	-	X	-	-	-	-	X	-	L	0104-3004	14.98	-38.02
1300308	East Atlantic		-	-	-	-	-	-	-	-	-	-	-			15.00	-38.00
4100026		644	X	X	-	-	X	-	-	-	-	X	-	L	0104-3004	11.49	-38.40
4100040	West Atlantic	740	X	X	X	X	X	X	-	-	-	X	-	O	0104-3004	14.50	-53.00
4100041	Mid. Atlantic	747	X	X	X	X	X	X	-	-	-	X	-	O	0104-3004	14.50	-46.00
4100043	Porto Rico	748	X	X	X	X	X	X	-	-	-	X	-	O	0104-3004	21.00	-65.00
4100044		745	X	X	X	X	X	X	-	-	-	X	-	O	0104-3004	21.70	-58.70
4100046		744	X	X	X	X	X	X	-	-	-	X	-	O	0104-3004	23.90	-70.90
4100047			-	-	-	-	-	-	-	-	-	-	-			27.50	-71.50
4100048		748	X	X	X	X	X	X	-	-	-	X	-	O	0104-3004	32.00	-69.60
4100049		747	X	X	X	X	X	X	-	-	-	X	-	O	0104-3004	27.50	-53.00
4100139		638	X	X	X	-	X	-	-	-	-	X	-	L	0104-3004	20.02	-37.86
4100300	Antilles	720	X	X	X	-	X	X	-	-	-	X	-	T	0104-3004	15.85	-57.47
4200059	Caraibes	60	S	S	S	S	S	S	-	-	-	S	-		0104-0304	15.00	-67.50
4400008	A Nantucket	748	X	X	X	X	X	X	-	-	-	X	-	O	0104-3004	40.50	-69.40
4400011	D Georges Bk	750	-	X	X	X	X	X	-	-	-	X	-	O	0104-3004	41.10	-66.60
4400018	SE Cape Cod	606	X	X	X	X	X	X	-	-	-	X	-	O	0604-3004	41.30	-69.30
4400024	NNE Channel	674	X	X	X	-	X	X	-	-	-	-	-	O	0104-3004	42.30	-65.90
4400137	E Scotia Sl.	713	X	X	X	X	X	X	-	-	-	-	-	O	0104-3004	42.30	-62.00
4400138	SW Gd Banks		-	-	-	-	-	-	-	-	-	-	-			44.30	-53.60
4400139	Beanquereau	714	X	X	X	X	X	X	-	-	-	-	-	O	0104-3004	44.30	-57.10
4400140	Tail of Bk		-	-	-	-	-	-	-	-	-	-	-			43.80	-51.70
4400141	Larentian F	701	S	X	X	X	X	X	-	-	-	-	-	O	0104-3004	43.00	-58.00
4400150	La Have Bk	702	X	-	X	X	X	X	-	-	-	-	-	O	0104-3004	42.50	-64.00

E-SURFMAR DB Monthly Report April 2016

Buoy-QC statistics from Meteo-France model outputs

Datend : Date of the last value received on GTS
Recvd : Total number of values received on GTS
GE : Number of Gross Errors (excluded from bias and sd computations)
bias : Mean differences between observation values and co-located model output values
Std : Standard deviation of differences

Air Pressure (hPa), drifting buoys, April 2016

Datend	WMO	Telcom	Recvd	GE	Bias	Std
20160430	1300868	11686410	720	0	0.3	0.4
20160430	1300869	11688410	720	0	0.2	0.5
20160430	1300871	61516870	720	0	0.4	0.4
20160430	1300872	61611050	720	0	0.4	0.4
20160430	1300881	62958450	720	0	-0.3	0.4
20160430	1300882	62851900	720	0	0.4	0.4
20160430	1500681	61661310	720	0	-0.4	0.4
20160430	1500682	61663300	720	0	0.6	0.6
20160430	1500683	61663370	720	0	0.5	0.4
20160418	1500684	62328350	422	0	-0.7	0.4
20160430	1500685	62854900	720	0	0.1	0.5
20160430	1500686	62959110	720	0	-0.2	0.4
20160430	1500688	62958430	684	0	0.1	0.5
20160430	1500689	62859770	720	0	0.0	0.4
20160430	1500690	62953440	720	0	0.2	0.5
20160430	1500691	62959100	720	0	0.2	0.4
20160430	1500692	62852910	720	0	0.2	0.4
20160430	1500693	62955320	720	0	0.2	0.4
20160430	1500694	62958270	720	0	0.2	0.6
20160430	1500695	62859890	720	0	0.4	0.6
20160430	1500696	62956260	720	0	0.0	0.8
20160430	1500697	62957270	720	0	0.4	0.6
20160430	2500617	61767070	720	0	0.3	1.0
20160430	2500622	62850900	720	0	0.2	0.3
20160430	2500623	62955110	720	0	0.2	0.3
20160430	4100729	62321360	720	0	0.1	0.7
20160430	4100730	62326350	720	0	0.2	0.7
20160430	4100731	62329360	720	0	0.1	0.6
20160430	4100970	60213790	720	0	0.2	0.7
20160430	4100972	60217780	720	0	-0.2	0.4
20160430	4400513	61475450	719	0	0.6	0.4
20160430	4400515	61476450	719	0	0.3	0.6
20160430	4400517	61477390	720	0	0.2	0.5
20160430	4400546	11160640	720	0	-0.2	0.4
20160430	4400551	60892140	720	0	0.2	0.5
20160430	4400557	61568540	720	0	0.5	0.6
20160430	4400613	11475040	720	0	-0.2	0.4
20160430	4400614	61661340	717	0	-0.1	0.5
20160430	4400624	11341110	710	0	-0.2	0.5
20160430	4400625	61668340	710	0	0.8	0.7
20160430	4400739	61516840	720	0	0.3	0.5
20160430	4400740	11883820	241	1	-0.2	0.6
20160430	4400744	62953450	720	4	0.1	1.3
20160430	4400746	62850730	720	0	0.3	0.4
20160430	4400747	62327370	720	0	0.0	0.5
20160430	4400761	61669320	720	0	-0.3	0.4
20160430	4400765	62325370	720	0	0.4	0.6
20160430	4400766	62326340	720	0	-0.1	0.4
20160430	4400764	61662330	720	0	-0.1	0.5
20160430	4400768	62322360	720	0	0.6	0.3
20160430	4400772	62950440	676	0	-0.1	0.6
20160430	4400773	11595650	720	0	0.5	0.4
20160430	4400775	61476400	720	0	0.4	0.7
20160430	4400776	61474410	717	0	0.5	0.4
20160430	4400777	62854730	720	0	0.3	0.7
20160430	4400778	61475430	719	0	0.2	0.4
20160430	4400779	62951460	720	0	0.2	0.7
20160430	4400835	60218770	720	0	-0.3	0.3
20160430	4400836	60218680	720	0	0.1	0.4
20160430	4400837	60209590	720	0	-0.0	0.5
20160430	4400839	60205090	720	0	-0.1	0.4
20160430	4400846	60441290	720	0	0.4	0.4

E-SURFMAR DB Monthly Report April 2016

20160430	4400848	60448280	719	0	0.3	0.4
20160430	4400856	62728390	719	0	0.3	0.5
20160430	4400857	62329370	720	0	0.2	0.5
20160407	4400858	62329350	155	0	-0.4	0.7
20160430	4400863	60211690	720	0	-0.5	0.6
20160430	4400866	11793240	720	0	-0.3	0.5
20160430	4400867	11593590	720	0	-0.2	0.4
20160430	4400868	11794230	720	0	0.1	0.8
20160430	4400873	61612060	720	0	0.7	0.6
20160430	4400874	62858910	720	0	0.3	0.5
20160430	4400875	61616040	720	0	0.3	0.8
20160413	4400878	60528170	203	55	0.5	1.0
20160430	4400885	60218780	720	0	-0.1	0.4
20160430	4400887	60251440	720	0	-0.0	0.3
20160430	4400889	60202320	720	0	-0.1	0.6
20160430	4400890	12000230	720	0	-0.0	0.7
20160430	4400891	12007220	720	0	-0.1	0.6
20160430	4400901	61472460	720	0	0.1	0.5
20160430	4400902	61471430	720	0	0.2	0.6
20160430	4400904	61471420	719	0	-0.2	0.5
20160430	4401500	61390930	716	0	0.5	0.6
20160430	4401501	61878860	719	0	0.3	0.8
20160430	4401502	61879840	720	0	0.3	0.7
20160430	4401503	61879850	720	0	0.4	0.7
20160430	4401504	61879860	720	0	0.1	0.7
20160430	6200513	61665360	720	0	0.1	0.6
20160428	6200539	60891140	666	0	-0.3	0.6
20160430	6200553	11165650	720	0	0.1	0.4
20160430	6200554	62952460	714	0	0.2	0.5
20160430	6200555	61515850	719	0	0.4	0.5
20160430	6200556	61510860	720	0	-0.4	0.4
20160430	6200557	62328340	719	0	0.2	0.5
20160430	6200558	62324370	714	0	0.3	0.5
20160430	6200559	62327350	665	0	0.5	0.5
20160430	6200713	11246980	717	0	-0.3	0.5
20160430	6200714	11240980	720	0	-0.4	0.5
20160430	6200940	60203850	720	0	-0.2	0.3
20160430	6200941	60207590	720	0	-0.0	0.4
20160430	6203500	61390940	719	0	0.2	0.3
20160430	6203501	61390950	720	0	0.4	0.3
20160430	6203502	61390960	720	0	0.3	0.4
20160430	6203503	61391920	720	0	-0.3	0.5
20160430	6203504	61391930	720	0	0.2	0.3
20160430	6300646	62951280	720	0	0.3	0.5
20160430	6400519	61518850	600	17	0.9	2.1
20160430	6400521	11470030	611	0	-0.2	0.3
20160430	6400523	61510870	679	0	0.3	0.4
20160430	6400524	61619040	720	0	0.3	0.5
20160430	6400526	61611070	695	0	0.4	0.7
20160430	6400549	60898120	720	0	0.1	0.5
20160430	6400551	11795230	720	0	0.0	0.5
20160430	6400553	62954270	720	0	-0.1	0.4
20160430	6400554	62958280	720	0	0.4	0.4
20160430	6400555	62955280	720	0	0.2	0.4
20160430	6400560	62956270	720	0	0.2	0.4
20160430	6400562	62957280	720	0	0.0	0.5
20160430	6400606	61515870	720	0	0.8	0.5
20160430	6400623	11470040	720	6	-0.4	0.9
20160430	6400666	60179710	720	7	0.5	0.9
20160430	6400667	61615060	650	0	0.0	0.6
20160430	6400694	11548420	720	0	-0.1	0.9
20160430	6500514	62954450	720	0	0.2	0.6
20160430	6500515	62858710	298	0	0.4	0.6
20160430	6500519	61666340	720	0	0.7	0.5
20160430	6500596	61511850	714	0	0.6	0.6
20160430	6500599	62326370	720	0	0.3	0.6
20160430	6500601	62320360	720	0	0.3	0.7
20160430	6500602	62323360	720	0	-0.4	0.7
20160430	6500603	62959440	134	0	0.6	0.5

E-SURFMAR DB Monthly Report April 2016

Air Pressure (hPa), moored buoys, April 2016

Datend	WMO	Telcom	Recvd	GE	Bias	Std
20160430	1300130		720	0	0.4	0.5
20160430	1300131		719	0	0.3	0.5
20160430	6100001		701	0	0.2	0.5
20160430	6100002		718	0	0.5	0.5
20160430	6100196		719	0	0.1	0.7
20160430	6100197		720	0	-0.4	0.6
20160430	6100198		720	0	0.4	0.7
20160430	6100280		720	0	0.3	0.7
20160430	6100281		720	0	0.3	0.7
20160430	6100417		720	0	0.3	0.6
20160430	6100430		720	0	0.0	0.7
20160406	6101003		40	0	-0.2	0.7
20160428	6200001		659	1	-0.1	0.6
20160430	6200024		674	0	0.3	0.6
20160430	6200025		657	0	0.4	0.6
20160430	6200027		216	0	-0.1	0.5
20160430	6200029		62	0	0.2	0.4
20160430	6200030		637	0	0.1	0.4
20160430	6200050		720	0	0.2	0.4
20160430	6200081		718	0	0.1	0.4
20160430	6200082		711	0	0.6	0.5
20160430	6200083		720	0	0.3	0.6
20160430	6200084		720	0	0.4	0.6
20160430	6200085		720	0	0.3	0.5
20160430	6200091		709	0	-0.0	0.4
20160404	6200092		85	1	-0.7	0.4
20160430	6200094		40	0	0.1	0.3
20160430	6200095		468	0	0.2	0.3
20160430	6200105		688	0	-0.0	0.4
20160428	6200163		659	3	-0.1	0.5
20160430	6400045		720	0	0.2	0.4
20160430	6400046		719	0	0.2	0.4

Air Temperature (C), moored buoys, April 2016

Datend	WMO	Telcom	Recvd	GE	Bias	Std
20160430	1300130		720	0	0.2	0.5
20160430	1300131		719	0	0.9	0.7
20160430	6100001		701	0	-0.2	0.6
20160430	6100002		719	0	0.0	0.6
20160430	6100196		719	0	0.0	0.5
20160430	6100197		720	0	2.0	0.5
20160430	6100198		720	0	0.0	0.5
20160430	6100280		720	0	0.2	0.8
20160430	6100281		720	0	-0.2	0.6
20160430	6100417		720	0	-0.0	0.5
20160430	6100430		720	0	3.1	0.9
20160428	6200001		658	0	-0.2	0.5
20160430	6200024		674	0	0.4	0.6
20160430	6200025		657	0	0.2	0.8
20160430	6200029		62	0	-0.0	0.3
20160430	6200030		637	0	-0.6	0.9
20160430	6200050		720	0	-0.1	0.5
20160430	6200081		716	0	-0.2	0.5
20160430	6200082		210	0	0.1	0.4
20160430	6200083		720	0	-0.2	0.6
20160430	6200084		720	0	-0.1	0.6
20160430	6200085		720	0	-0.0	0.7
20160430	6200091		709	0	-0.1	0.5
20160404	6200092		85	0	0.2	1.4
20160430	6200094		40	0	-0.4	0.4
20160430	6200095		468	0	-0.4	0.4
20160430	6200105		708	0	-0.6	0.7
20160428	6200163		657	0	0.0	0.6
20160430	6400045		720	0	-0.5	0.5
20160430	6400046		719	0	-0.5	0.6
20160430	6600021		660	0	0.2	0.6

E-SURFMAR DB Monthly Report April 2016

Wind direction (deg.), moored buoys, April 2016

Datend	WMO	Telcom	Recvd	GE	Bias	Std
20160430	1300130		718	59	8	27
20160430	1300131		716	120	16	33
20160430	6100001		700	45	-5	25
20160430	6100002		718	5	1	18
20160430	6100196		713	15	-4	21
20160430	6100197		715	14	-9	21
20160430	6100198		714	42	-7	28
20160430	6100280		708	30	1	30
20160430	6100281		716	66	16	35
20160430	6100417		712	24	-8	25
20160430	6100430		716	23	-14	28
20160406	6101003		40	8	-65	34
20160428	6200001		659	18	-2	24
20160430	6200024		487	18	-5	26
20160430	6200025		650	64	1	35
20160430	6200027		188	4	2	35
20160430	6200029		62	0	-1	10
20160430	6200030		537	28	-105	32
20160430	6200050		720	5	2	17
20160430	6200081		717	13	-3	17
20160430	6200082		701	5	-2	20
20160430	6200083		713	10	0	19
20160430	6200084		712	6	-1	21
20160430	6200085		712	10	-8	23
20160430	6200091		707	5	-2	20
20160404	6200092		85	24	-76	68
20160430	6200094		40	0	-0	12
20160430	6200095		468	1	-1	13
20160430	6200105		630	3	-2	17
20160428	6200163		659	13	-3	19
20160430	6400046		715	4	6	16
20160430	6600021		660	7	-4	20

Wind speed rate, moored buoys, April 2016

Datend	WMO	Telcom	Recvd	GE	Rate	Err
20160430	1300130		718	0	1.1	2.2
20160430	1300131		716	1	1.4	3.7
20160430	6100001		700	1	1.3	2.2
20160430	6100002		718	0	1.0	1.6
20160430	6100196		713	0	1.0	2.2
20160430	6100197		715	0	1.0	1.5
20160430	6100198		714	0	1.0	2.1
20160430	6100280		708	0	1.1	1.7
20160430	6100281		716	0	1.5	1.8
20160430	6100417		712	0	1.0	1.7
20160430	6100430		716	0	1.2	1.8
20160406	6101003		40	0	0.3	6.3
20160428	6200001		659	0	1.1	1.7
20160430	6200024		487	0	1.1	1.8
20160430	6200025		650	0	1.0	2.2
20160430	6200027		188	0	1.0	1.5
20160430	6200029		62	0	1.0	0.8
20160430	6200030		537	81	1.0	1.8
20160430	6200050		720	0	1.1	1.5
20160430	6200081		717	1	1.0	1.5
20160430	6200082		701	0	0.9	1.6
20160430	6200083		713	0	0.9	1.7
20160430	6200084		712	0	0.9	1.6
20160430	6200085		712	0	1.0	1.5
20160430	6200091		707	0	1.0	1.8
20160404	6200092		85	0	0.2	2.8
20160430	6200094		40	0	0.9	1.2
20160430	6200095		468	0	1.0	1.0
20160430	6200105		630	3	1.0	1.3
20160428	6200163		659	0	0.9	1.7
20160430	6400046		715	0	1.0	1.4
20160430	6600021		660	0	1.1	1.3

Comments on QC statistics :

Air pressure

1. Metocean buoy WMO **6400519** reported wrong pressure values between 10th and 22th of April before returning then correctly.
2. Metocean buoy WMO **4400744** reported wrong pressure values about 9th April before returning then correctly.
3. Metocean buoy WMO **4400878** reported wrong pressure values just before IPMA Lisbon recovered it.

Air Temperature

1. Eumetnet Irish moored buoy M3 WMO **6200092** reported air temperature values with a bias fluctuating between -5°C and +3°C before it was stopped on 4th of April.
2. Eumetnet Spanish moored buoy WMO **6100197** and **6100430** continued to report air temperature values with a systematic bias of about 2 at 4°C.

Wind

1. Greek moored buoy WMO **6101003** and Eumetnet moored buoy M3 WMO **6200092** reported wrong wind values before they are stopped respectively on the 6th and 4th of April.
2. Plymouth Marine Laboratory L4 WMO **6200030** reported wind direction values with a systematic bias for about 100 degrees since since its restart on the 4th of April.

Monthly QC statistics and other data quality control tools are available on line at :
<http://www.meteo.shom.fr/qctools/>

The working area of the E-SURFMAR website is open at <http://esurfmar.meteo.fr/wikisurf-wa/> . Ask the E-SURFMAR Programme Manager Pierre.Blouch@meteo.fr for the password in case you forgot it. Graphs of system performances June be displayed/downloaded at http://esurfmar.meteo.fr/doc/r/surfmar/others/e-surfmar_monitoring.pdf.