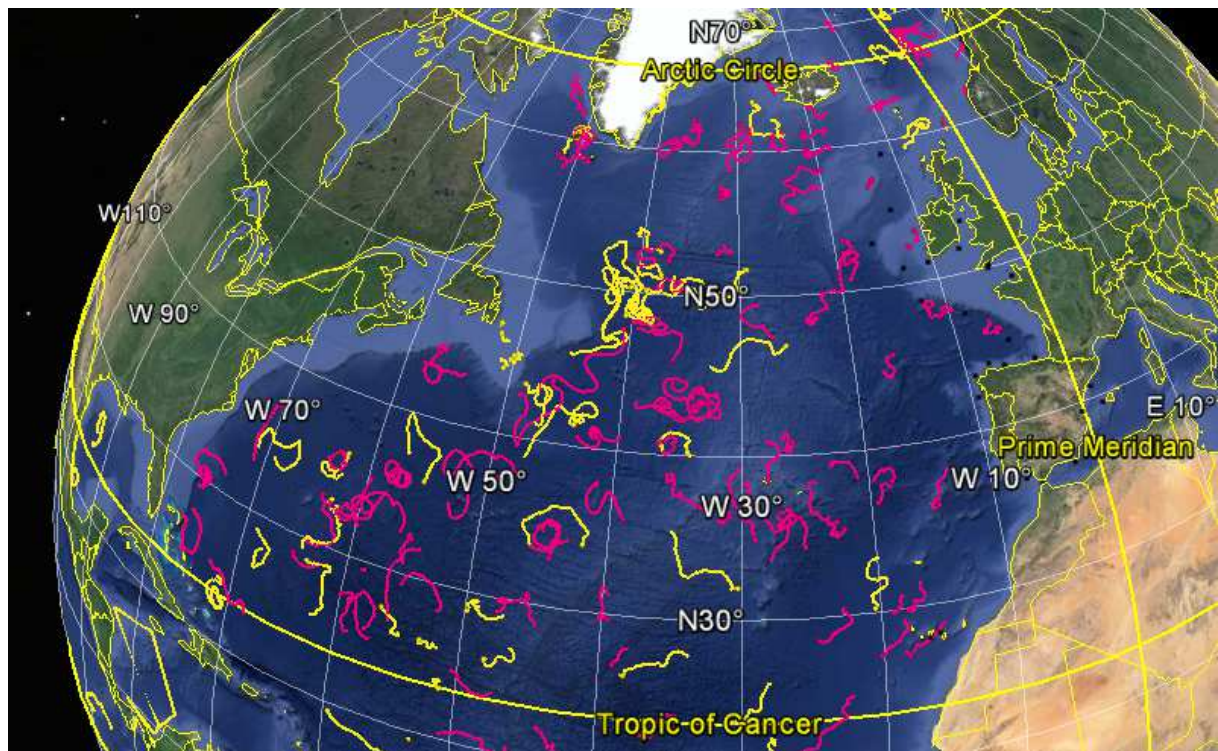


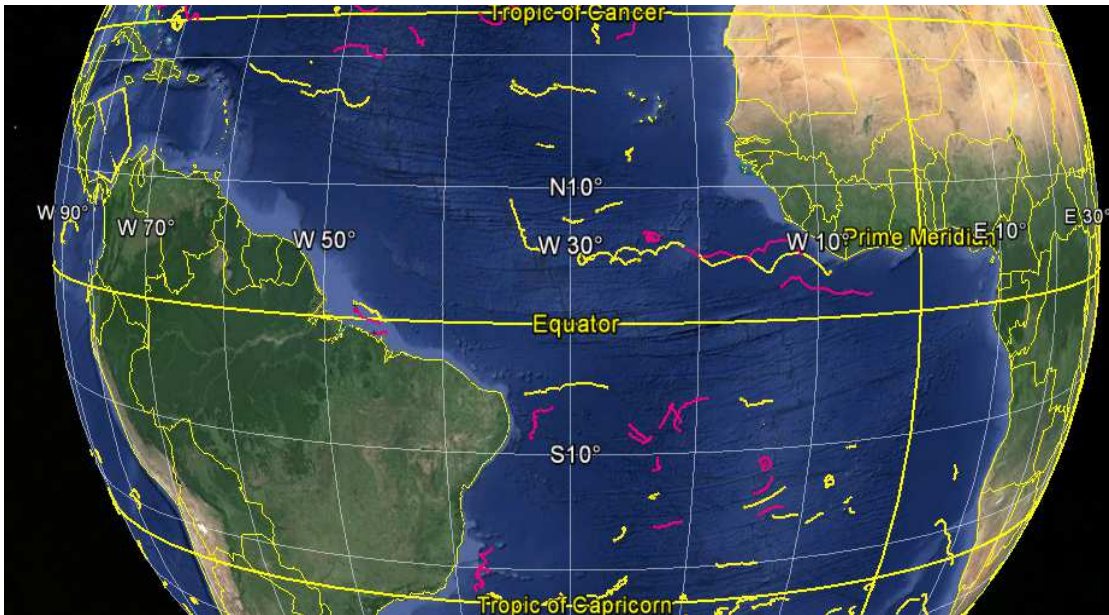
DATA BUOY MONTHLY REPORT

May 2016

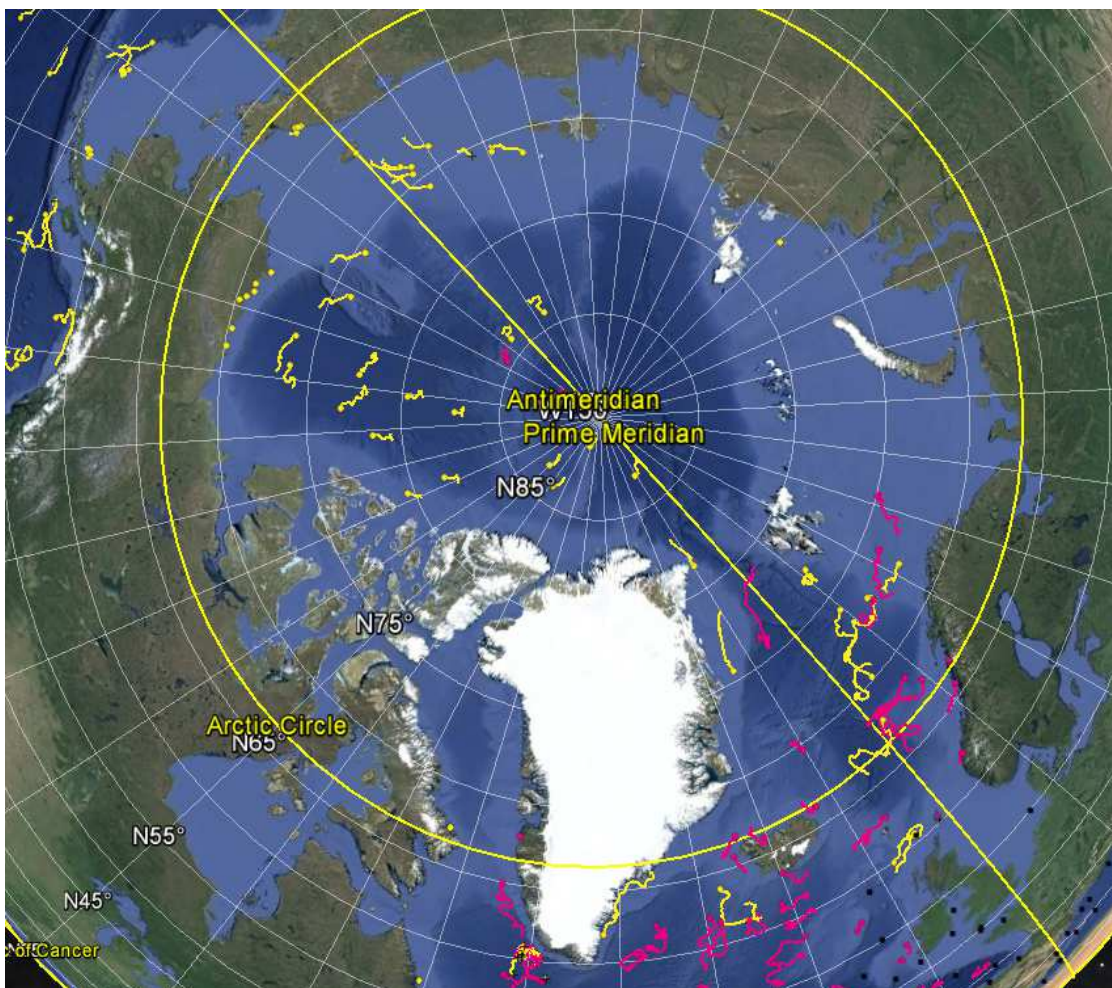


*May 2016 : Operating data buoys in the North Atlantic
Drifting buoy trajectories : E-SURFMAR (red), others (yellow)
Moored buoy positions (black)*

*Most recent trajectories may be seen at:
http://www.meteo.shom.fr/cartographie/data/kml/MeteoFrance_buoys_map_15.kmz*



May 2016: Drifting buoy trajectories in the Tropical Atlantic : E-SURFMAR (red), others (yellow)



May 2016: Drifting buoy trajectories in the Arctic Ocean and adjacent seas : E-SURFMAR (red), others (yellow)

DRIFTING BUOYS

Network status

By the end of May, **136 Drifting buoys**, reporting air pressure onto the GTS, were in operation in the framework of E-SURFMAR. Out of these, 95 were E-SURFMAR-funded Iridium SVP-Bs, including 3 deployed in the Arctic, 16 in AtlantOS activities, and 3 HRSST-2 buoys. The remaining buoys were: 41 drifters owned by NOAA and upgraded with barometers by E-SURFMAR.

Information about the availability of buoys for future deployments may be obtained from the E-SURFMAR wikisite (working area) at: http://esurfmar.meteo.fr/wikisurf-wa/index.php/Availability_of_drifting_buoys

Besides E-SURFMAR buoys, 65 drifting buoys were reporting at least air pressure observations in the EUMETNET area of interest.

Drifting buoys - New deployments

WMO	Telcom	Typ	Ow	Dep_Date	DepLat	DepLon	From	Comment
4101700	62950270	MSB	EU	20160517	35.3	-52.7	Le Havre	CMA CGM Bellini
4101701	62951270	MSB	EU	20160519	28.8	-62.0	Le Havre	CMA CGM Bellini
4401550	62952280	MSB	EU	20160517	40.9	-42.0	Le Havre	CMA CGM Bellini
4401551	62953270	MSB	EU	20160517	41.8	-40.0	Le Havre	CMA CGM Bellini
4401552	62952270	MSB	EU	20160517	37.1	-49.6	Le Havre	CMA CGM Bellini
6501550	63731620	MSB	EU	20160512	59.6	-49.4	Halifax	CCGS Hudson (Failed at deployment)
6501551	63734880	MSB	EU	20160513	59.5	-49.5	Halifax	CCGS Hudson
6501552	63738810	MSB	EU	20160513	58.2	-50.9	Halifax	CCGS Hudson
6501553	63739730	MSB	EU	20160513	59.1	-50.0	Halifax	CCGS Hudson
6501554	63739850	MSB	EU	20160513	58.6	-50.4	Halifax	CCGS Hudson (Failed at deployment)

Operating drifting buoys in North Atlantic by the end of the month

WMO	Telcom	Typ	Ow	nobs	Wi	AT	AP	dP	ST	Wa	Ws	Dr	Sb	U	SS	O	Start_end	Lat	Lon	Age
1300868	11686410	MSB	EU	744	-	-	X	-	X	-	-	X	-	-	-	T	0105-3105	27.01	-18.18	558
1300869	11688410	MSB	EU	745	-	-	X	-	X	-	-	X	-	-	-	T	0105-3105	21.93	-43.59	556
1300871	61516870	MSB	EU	737	-	-	X	-	X	-	-	X	-	-	-	T	0105-3105	26.90	-39.04	444
1300872	61611050	MSB	EU	744	-	-	X	-	X	-	-	X	-	-	-	T	0105-3105	23.31	-37.90	445
2500617	61767070	MSB	EU	744	-	-	X	-	X	-	-	-	-	-	-	T	0105-3105	62.37	-35.76	619
2500622	62850900	MSB	EU	744	-	-	X	-	X	-	-	-	-	-	-	T	0105-3105	88.06	-152.05	269
2500623	62955110	MSB	EU	744	-	-	X	-	X	-	-	-	-	-	-	T	0105-3105	84.67	-163.54	263
4100729	62321360	MSB	EU	744	-	-	X	-	X	-	-	X	-	-	-	T	0105-3105	36.13	-63.12	371
4100731	62329360	MSB	EU	744	-	-	X	-	X	-	-	X	-	-	-	T	0105-3105	29.43	-55.19	376
4100970	60213790	PSB	UP	744	-	-	X	-	X	-	-	X	-	-	-	T	0105-3105	33.18	-63.53	1027
4100972	60217780	PSB	UP	719	-	-	X	-	X	-	-	X	-	-	-	T	0105-3105	33.02	-44.27	1027
4101700	62950270	MSB	EU	348	-	-	X	-	X	-	-	X	-	-	-	T	1705-3105	37.19	-51.23	15
4101701	62951270	MSB	EU	304	-	-	X	-	X	-	-	X	-	-	-	T	1905-3105	28.81	-64.84	14
4100730	62326350	MSB	EU	744	-	-	X	-	X	-	-	X	-	-	-	T	0105-3105	30.25	-75.89	370
4400513	61475450	DSB	UP	744	-	-	X	-	X	-	-	X	-	-	-	T	0105-3105	53.42	-11.03	450
4400515	61476450	DSB	UP	743	-	-	X	-	X	-	-	X	-	-	-	T	0105-3105	52.79	-32.24	452
4400517	61477390	DSB	UP	742	-	-	X	-	X	-	-	X	-	-	-	T	0105-3105	36.08	-14.66	449
4400546	11160640	MSB	EU	744	-	-	X	-	X	-	-	X	-	-	-	T	0105-3105	29.20	-47.58	1169
4400551	60892140	MSB	EU	744	-	-	X	-	X	-	-	X	-	-	-	T	0105-3105	67.69	9.21	633
4400557	61568540	DSB	UP	744	-	-	X	-	X	-	-	X	-	-	-	T	0105-3105	43.93	-33.64	322
4400613	11475040	MSB	EU	744	-	-	X	-	X	-	-	X	-	-	-	T	0105-3105	30.50	-45.45	1183
4400614	61661340	MSB	EU	742	-	-	X	-	X	-	-	X	-	-	-	T	0105-3105	52.39	-12.07	763
4400624	11341110	YSB	EU	724	-	-	X	-	X	-	-	X	-	-	-	T	0105-3105	24.78	-50.40	1268
4400625	61668340	MSB	EU	690	-	-	X	-	X	-	-	X	-	-	-	T	0105-3105	56.98	-31.86	761
4400739	61516840	MSB	EU	744	-	-	X	-	X	-	-	X	-	-	-	T	0105-3105	35.93	-38.99	729
4400740	11883820	PSB	UP	113	-	-	X	-	X	-	-	X	-	-	-	T	0105-3105	29.69	-58.59	1424
4400744	62953450	MSB	EU	746	-	-	X	-	X	-	-	X	-	-	-	T	0105-3105	50.88	-20.02	310
4400746	62850730	MSB	EU	744	-	-	X	-	X	-	-	X	-	-	-	T	0105-3105	36.57	-27.07	306

E-SURFMAR DB Monthly Report May 2016

6400562	62957280	MSB	EU	744	-	-	X	-	X	-	-	X	-	-	-	T	0105-3105	63.42	-19.85	121
6400606	61515870	MSB	EU	743	-	-	X	-	X	-	-	X	-	-	-	T	0105-3105	74.93	-31.63	496
6400623	11470040	MSB	EU	744	-	-	X	-	X	-	-	X	-	-	-	T	0105-3105	66.28	-12.56	1116
6400666	60179710	MSB	EU	744	-	-	X	-	X	-	-	X	-	-	-	T	0105-3105	69.69	-10.28	916
6400694	11548420	MSB	UP	744	-	-	X	-	X	-	-	X	-	-	-	T	0105-3105	60.13	-37.79	165
6500514	62954450	MSB	EU	744	-	-	X	-	X	-	-	X	-	-	-	T	0105-3105	52.25	-37.09	313
6500515	62858710	MSB	EU	744	-	-	X	-	X	-	-	X	-	-	-	T	0105-3105	62.14	-29.54	289
6500519	61666340	MSB	EU	744	-	-	X	-	X	-	-	X	-	-	-	T	0105-3105	60.01	-21.28	164
6500596	61511850	MSB	EU	737	-	-	X	-	X	-	-	X	-	-	-	T	0105-3105	57.42	-23.89	713
6500599	62326370	MSB	EU	744	-	-	X	-	X	-	-	X	-	-	-	T	0105-3105	58.48	-19.91	388
6500601	62320360	MSB	EU	744	-	-	X	-	X	-	-	X	-	-	-	T	0105-3105	64.96	-54.71	385
6500602	62323360	MSB	EU	744	-	-	X	-	X	-	-	X	-	-	-	T	0105-3105	56.63	-32.03	385
6500603	62959440	MSB	EU	741	-	-	X	-	S	-	-	X	-	-	-	T	0105-3105	68.01	-53.72	262
6501551	63734880	MSB	EU	438	-	-	X	-	X	-	-	X	-	-	-	T	1305-3105	58.51	-48.30	22
6501552	63738810	MSB	EU	438	-	-	X	-	X	-	-	X	-	-	-	T	1305-3105	58.73	-52.46	19
6501553	63739730	MSB	EU	437	-	-	X	-	X	-	-	X	-	-	-	T	1305-3105	57.87	-51.20	22

Operating AtlantOS drifting buoys by the end of the month

WMO	Telcom	Typ	Ow	nobs	Wi	AT	AP	dP	ST	Wa	Ws	Dr	Sb	U	SS	O	Start_end	Lat	Lon	Age
1300881	62958450	MSB	EU	744	-	-	X	-	X	-	-	X	-	-	-	T	0105-3105	6.67	-24.30	83
1300882	62851900	MSB	EU	744	-	-	X	-	X	-	-	X	-	-	-	T	0105-3105	4.91	-11.56	82
1500681	61661310	MSB	EU	744	-	-	X	-	X	-	-	X	-	-	-	T	0105-3105	-22.25	-38.26	410
1500682	61663300	MSB	EU	747	-	-	X	-	X	-	-	X	-	-	-	T	0105-3105	-15.60	-14.17	411
1500683	61663370	MSB	EU	744	-	-	X	-	X	-	-	X	-	-	-	T	0105-3105	-21.11	-38.09	412
1500685	62854900	MSB	EU	744	-	-	X	-	X	-	-	X	-	-	-	T	0105-3105	-16.13	-22.98	280
1500686	62959110	MSB	EU	744	-	-	X	-	X	-	-	X	-	-	-	T	0105-3105	-8.38	-25.30	279
1500689	62859770	MSB	EU	744	-	-	X	-	X	-	-	X	-	-	-	T	0105-3105	-8.67	-33.08	80
1500690	62953440	MSB	EU	744	-	-	X	-	X	-	-	X	-	-	-	T	0105-3105	0.65	-47.08	79
1500691	62959100	MSB	EU	744	-	-	X	-	X	-	-	X	-	-	-	T	0105-3105	-7.66	-25.32	78
1500692	62852910	MSB	EU	744	-	-	X	-	X	-	-	X	-	-	-	T	0105-3105	-7.87	-22.94	78
1500693	62955320	MSB	EU	744	-	-	X	-	X	-	-	X	-	-	-	T	0105-3105	-11.32	-23.34	77
1500694	62958270	MSB	EU	744	-	-	X	-	X	-	-	X	-	-	-	T	0105-3105	-11.13	-13.96	76
1500695	62859890	MSB	EU	744	-	-	X	-	X	-	-	X	-	-	-	T	0105-3105	-8.19	-21.33	72
1500696	62956260	MSB	EU	744	-	-	X	-	X	-	-	X	-	-	-	T	0105-3105	2.53	-13.25	70
1500697	62957270	MSB	EU	744	-	-	X	-	X	-	-	X	-	-	-	T	0105-3105	-13.64	-14.66	75

Drifting buoys which ceased to be operational

WMO	Telcom	Typ	Ow	End_Date	Lat	Lon	Age	Cause
1500688	62958430	MSB	EU	20160507	-1.0	-45.6	254	Ashore in Brazil
6400667	61615060	MSB	EU	20160513	60.2	-1.2	870	Ashore in Shetland

Non-operating drifting buoys reporting GTS data

WMO	Telcom	Typ	Ow	nobs	Wi	AT	AP	dP	ST	Wa	Ws	Dr	Sb	U	SS	O	Start_end	Lat	Lon	Age
4400604	11794240	MSB	E2	753	-	-	-	-	X	-	-	X	-	-	-	T	0105-3105	48.28	-13.26	602
4400745	62956440	MSB	EU	744	-	-	-	-	X	-	-	X	-	-	-	T	0105-3105	36.30	-31.23	307
4400769	62328360	MSB	EU	269	-	-	-	-	X	-	-	X	-	-	-	T	2005-3105	37.07	-68.09	376
4400869	61615050	MSB	EU	744	-	-	-	-	X	-	-	X	-	-	-	T	0105-3105	37.23	-25.34	301

Other operating drifting buoys inside the EUMETNET by the end of the month

WMO	Telcom	Owner	nobs	Wi	AT	AP	dP	ST	Wa	Ws	Dr	Sb	U	SS	O	Start_end	Lat	Lon
1300515	114951	AOML	707	-	-	X	-	X	-	-	X	-	-	-	L	0105-3105	26.26	-53.09
1300530	114916	AOML	706	-	-	X	-	X	-	-	X	-	-	-	L	0105-3105	12.06	-25.42
1300572	127002	AOML	741	-	-	X	-	X	-	-	X	-	-	-	L	0105-3105	30.28	-20.45
1300575	63220960	CMM	734	-	-	X	-	X	-	-	X	-	-	-	T	0105-3105	8.27	-27.98
1300576	63126380	CMM	740	-	-	X	-	X	-	-	X	-	-	-	T	0105-3105	5.69	-21.29
1300577	63220600	CMM	742	-	-	X	-	X	-	-	X	-	-	-	T	0105-3105	3.49	-8.96
1300593	132697	AOML	721	-	-	X	-	X	-	-	X	-	-	-	L	0105-3105	7.72	-30.53
1300633	109491	AOML	740	-	-	X	-	X	-	-	X	-	-	-	L	0105-3105	26.27	-38.23
1300661	62325770	UKMO	744	-	-	X	-	-	-	-	X	-	-	-	T	0105-3105	19.46	-59.54
1300665	62327760	UKMO	744	-	-	X	-	-	-	-	X	-	-	-	T	0105-3105	21.11	-27.84
1301500	63122380	CMM	734	-	-	X	-	X	-	-	X	-	-	-	T	0105-3105	17.96	-34.77
1301501	63123380	CMM	735	-	-	X	-	X	-	-	X	-	-	-	T	0105-3105	17.68	-34.59

E-SURFMAR DB Monthly Report May 2016

1301502	63124390	CMM	735	-	-	X	-	X	-	-	X	-	-	-	T	0105-3105	17.70	-31.34
2100942	119223	UKMO	730	-	-	X	-	X	-	-	X	-	-	-	L	0105-3105	26.02	-48.14
2500575	137812	APL	743	-	-	X	-	X	-	-	-	-	-	-	L	0105-3105	62.08	-41.91
2600537	61369210	IABP	1408	-	-	X	X	X	-	-	X	-	-	-	O	0105-3105	73.18	14.03
2600545	62556750	IABP	1287	-	X	X	X	-	-	-	X	-	-	-	O	0105-3105	67.88	1.50
3100863	61611040	CMM	699	-	-	X	-	X	-	-	X	-	-	-	T	0105-3105	28.70	-63.47
4100506	114944	AOML	724	-	-	X	-	X	-	-	X	-	-	-	L	0105-3105	36.02	-55.15
4100590	132676	AOML	743	-	-	X	-	X	-	-	X	-	-	-	L	0105-3105	41.32	-43.76
4100594	127029	AOML	739	-	-	X	-	X	-	-	X	-	-	-	L	0105-3105	36.24	-62.27
4100597	61512840	AOML	744	-	-	X	-	X	-	-	X	-	-	-	T	0105-3105	27.60	-56.45
4100598	61610040	AOML	744	-	-	X	-	X	-	-	X	-	-	-	T	0105-3105	29.20	-68.75
4100635	61475300	CMM	743	-	-	X	-	X	-	-	X	-	-	-	T	0105-3105	23.42	-51.20
4100706	11595580	AOML	744	-	-	X	-	X	-	-	X	-	-	-	T	0105-3105	32.01	-30.32
4100707	62957110	CMM	744	-	-	X	-	-	-	-	X	-	-	-	T	0105-3105	13.77	-61.05
4100708	62958100	CMM	744	-	-	X	-	X	-	-	X	-	-	-	T	0105-3105	17.11	-53.44
4100709	11598570	CMM	546	-	-	X	-	X	-	-	X	-	-	-	T	0905-3105	34.08	-69.03
4100638	62955440	CMM	744	-	-	-	-	X	-	-	X	-	-	-	T	0105-3105	20.62	-63.84
4100711	11477030	CMM	124	-	-	-	-	S	-	-	S	-	-	-	-	0105-0605	28.86	-22.87
4100936	109488	AOML	738	-	-	X	-	-	-	-	X	-	-	-	L	0105-3105	33.09	-62.60
4100975	109439	AOML	739	-	-	X	-	X	-	-	X	-	-	-	L	0105-3105	23.57	-30.70
4400510			984	-	-	X	-	X	-	-	-	-	-	-	L	1305-3105	46.88	-52.05
4400521	133133	AOML	736	-	-	X	-	X	-	-	X	-	-	-	L	0105-3105	40.25	-34.34
4400558	123286	AOML	740	-	-	X	-	X	-	-	X	-	-	-	L	0105-3105	28.83	-49.84
4400670			1250	-	-	X	X	X	-	-	X	-	-	-	O	0105-3105	44.98	-50.13
4400896	109438	AOML	744	-	-	X	-	X	-	-	X	-	-	-	L	0105-3105	34.14	-41.87
4401601	63265890	DFO	440	-	-	X	-	X	-	-	X	-	-	-	O	1205-3005	60.07	-51.24
4401602	63261890	DFO	427	-	-	X	-	X	-	-	X	-	-	-	O	1205-3005	60.96	-50.77
4401603	63263870	DFO	436	-	-	X	-	X	-	-	X	-	-	-	O	1205-3005	60.21	-50.83
4401604	63260870	DFO	458	-	-	X	-	X	-	-	X	-	-	-	O	1105-3005	58.77	-51.35
4401605	63263860	DFO	465	-	-	X	-	X	-	-	X	-	-	-	O	1105-3005	58.77	-47.88
4700503	137813	APL	701	-	-	X	-	X	-	-	-	-	-	-	L	0105-3105	63.92	-27.58
4700509	62553800	IABP	975	-	X	X	X	-	-	-	X	-	-	-	O	0105-3105	75.57	-14.15
4700539	63512980	DFO	1295	-	-	X	X	X	-	-	X	-	-	-	O	0105-3105	48.48	-40.65
4700540	63515680	DFO	1332	-	-	X	X	X	-	-	X	-	-	-	O	0105-3105	50.24	-38.97
4700546	63617000	DFO	1266	-	-	X	X	X	-	-	X	-	-	-	O	0105-3105	44.08	-50.82
4700549	63516680	DFO	1350	-	-	X	X	X	-	-	X	-	-	-	O	0105-3105	50.35	-40.52
4700551	60435010	ECDB	1385	-	-	X	X	X	-	-	X	-	-	-	O	0105-3105	56.70	-60.67
4700552		ECDB	1399	-	-	X	X	X	-	-	X	-	-	-	O	0105-3105	67.39	-63.26
4700555			1285	-	-	X	X	X	-	-	X	-	-	-	O	0105-3105	46.23	-51.80
4700557	63123370	DFO	1340	-	-	X	X	X	-	-	X	-	-	-	O	0105-3105	51.28	-37.74
4700560			1335	-	-	X	X	X	-	-	X	-	-	-	O	0105-3105	51.76	-29.25
4700562	63515630	DFO	1318	-	-	X	X	X	-	-	X	-	-	-	O	0105-3105	52.83	-38.01
4700567	63518580	DFO	1372	-	-	X	X	X	-	-	X	-	-	-	O	0105-3105	48.12	-38.23
4700568	63517970	DFO	1185	-	-	X	X	X	-	-	X	-	-	-	O	0105-3105	49.39	-33.30
4700569	63514970	DFO	1349	-	-	X	X	X	-	-	X	-	-	-	O	0105-3105	46.82	-25.90
4700574			1245	-	-	X	X	X	-	-	X	-	-	-	O	0105-3105	43.38	-48.50
4700584	63614000	DFO	968	-	-	X	X	X	-	-	X	-	-	-	O	0105-3105	44.54	-49.99
4700589	61762030	ECDB	1398	-	-	X	X	X	-	-	X	-	-	-	O	0105-3105	67.39	-63.30
4800568	61363210	IABP	1402	-	-	X	X	X	-	-	X	-	-	-	O	0105-3105	59.93	-7.91
6300561	60654200	AOML	744	-	-	X	-	X	-	-	X	-	-	-	L	0105-3105	74.08	9.48
6400749	62784540	AWI	1423	-	X	X	X	X	-	-	X	-	-	-	O	0105-3105	81.30	-9.72
6400758	61188690	AWI	1413	-	-	X	X	X	-	-	X	-	-	-	O	0105-3105	86.66	-11.29
6400760	62888930	AWI	470	-	X	X	X	X	-	-	X	-	X	-	O	0105-3105	88.50	-61.59

Abbreviations

WMO : WMO id.
Telcom : Telcom id.
Typ : Buoy type
 - first character : Manufacturer (D = DBI , M = Metocean, P = Pacific Gyre
 T = Technocean, Y = Marlin-Yug...)
 - second character : Main type (F = FGGE, I = ICEB, S = SVP)
 - third character : Sub type (B = barometer buoy, W = Wind buoy,
 S = Salinity buoy)

Ow : Buoy owner (country code or EU for EUCOS, E2 for HRSST-2 buoys, UP for upgraded
 buoys)

Owner : Buoy owner for non EUCOS buoys

Nobs : number of GTS reports received at Meteo-France

Parameters (X = OK, S = stopped, - = not measured) :

 Wi : Wind
 AT : Air Temperature
 AP : Air Pressure
 dP : Air pressure tendancy
 ST : Sea surface Temperature
 Wa : Wave period and height
 Ws : Wave spectra
 Dr : Drogue presence
 Sb : Subsurface temperature
 U : Relative humidity
 SS : Sea surface Salinity

O : Origin of the reports (T = CLS Toulouse, L = CLS America, O = Other)

Start_end : first and last dates of the month for which GTS data were received at Meteo-France

Lat : Latitude of the latest position

Lon : Longitude of the latest position

Age : Age of the buoy (days)

DepDate : Date of deployment

DepLat : Latitude of deployment

Dep Lon : Longitude of Deployment

From : Harbour of departure

Definition : An operating drifting buoy is a buoy providing at least air pressure or wind
(direction and velocity) data.

**E-SURFMAR DB Monthly Report
May 2016**

MOORED BUOYS

Former EGOS stations (K-pattern and Hydrosphere)

WMO	Name	nobs	Wi	AT	AP	dP	ST	Wa	Ws	Dr	Sb	U	SS	O	Start_end	Lat	Lon
6100001	Cote d'Azur	719	X	X	X	S	X	X	X	-	-	X	-	T	0105-3105	43.40	7.80
6100002	Lion	727	X	X	X	-	X	X	X	-	-	X	-	T	0105-3105	42.10	4.70
6200001	Gascogne	744	X	X	X	-	X	X	-	-	-	X	-	O	0405-3105	45.30	-5.00
6200029	K1	862	X	X	X	X	X	X	-	-	-	X	-	O	0105-3105	48.70	-12.50
6200081	K2	851	X	X	X	X	X	X	-	-	-	S	-	O	0105-3105	51.00	-13.20
6200090	M1	-	-	-	-	-	-	-	-	-	-	-	-	-	-	53.10	-11.20
6200091	M2	736	X	X	X	-	X	X	-	-	-	-	-	O	0105-3105	53.50	-5.40
6200092	M3	291	X	X	X	-	X	X	-	-	-	X	-	O	1905-3105	51.20	-10.50
6200093	M4	-	-	-	-	-	-	-	-	-	-	-	-	-	-	54.70	-9.10
6200094	M5	736	X	X	X	-	X	X	-	-	-	X	-	O	0105-3105	51.70	-6.70
6200095	M6	384	X	X	X	X	X	X	-	-	-	X	-	O	0105-3105	53.10	-15.90
6200105	K4	841	X	X	X	X	X	X	-	-	-	-	-	O	0105-3105	55.80	-11.40
6200108	K3	-	-	-	-	-	-	-	-	-	-	-	-	-	-	53.50	-19.50
6200163	Brittany	684	X	X	X	-	X	X	X	-	-	X	-	O	0405-3105	47.50	-8.40
6400045	K5	861	X	X	X	X	X	X	-	-	-	X	-	O	0105-3105	59.10	-11.70
6400046	K7	744	X	X	X	-	X	-	-	-	-	X	-	O	0105-3105	60.70	-5.20

Comments:

- EUMETNET moored buoys are presented in bold characters.

Former EGOS moored buoys (Spanish SeaWatch and WaveScan)

WMO	Name	nobs	Wi	AT	AP	dP	ST	Wa	Ws	Dr	Sb	U	SS	O	Start_end	Lat	Lon
1300130	Gran Canaria	718	X	X	X	-	X	X	X	-	-	-	X	O	0105-3105	28.18	-15.82
1300131	Tenerife Sur	729	X	X	X	-	X	X	X	-	-	-	X	O	0105-3105	28.00	-16.58
6100196	C. Begur	739	X	X	X	-	-	X	X	-	-	-	-	O	0105-3105	41.92	3.65
6100197	Mahon	744	X	X	X	-	-	X	X	-	-	-	-	O	0105-3105	39.72	4.42
6100198	C. de Gata	744	X	X	X	-	X	X	X	-	-	-	X	O	0105-3105	36.57	-2.33
6100280	Tarragona	744	X	X	X	-	X	X	X	-	-	-	X	O	0105-3105	40.77	1.47
6100281	Valencia	744	X	X	X	-	X	X	X	-	-	-	X	O	0105-3105	39.47	-0.27
6100417	C. de Palos	744	X	X	X	-	X	X	X	-	-	-	X	O	0105-3105	37.65	-0.32
6100430	Dragonera	744	X	X	X	-	-	X	X	-	-	-	-	O	0105-3105	39.56	2.11
6200024	Bilbao-Visc.	744	X	X	X	-	X	X	X	-	-	-	X	O	0105-3105	43.63	-3.03
6200025	C. de Penas	744	X	X	X	-	X	X	X	-	-	-	X	O	0105-3105	43.73	-6.17
6200082	E. de Bares	744	X	X	X	-	X	X	X	-	-	-	X	O	0105-3105	44.13	-7.69
6200083	Villano-Sis.	744	X	X	X	-	X	X	X	-	-	-	X	O	0105-3105	43.48	-9.22
6200084	C. Silleiro	744	X	X	X	-	X	X	X	-	-	-	X	O	0105-3105	42.12	-9.43
6200085	G. de Cadiz	744	X	X	X	-	X	X	X	-	-	-	X	O	0105-3105	36.48	-6.97
6201030	Santander	654	X	X	X	-	X	X	X	-	-	-	X	O	0105-3005	43.84	-3.77

Comments:

- The EUMETNET buoy is presented in bold characters.

Other European moored buoys (operated by 3rd parties)

WMO	Name	nobs	Wi	AT	AP	dP	ST	Wa	Ws	Dr	Sb	U	SS	O	Start_end	Lat	Lon
1200050	Cycofos	-	-	-	-	-	-	-	-	-	-	-	-	-	-	33.60	31.90
6100010	Italia-1	-	-	-	-	-	-	-	-	-	-	-	-	-	-	43.80	9.10
6200027	Jersey	289	X	-	X	X	-	X	-	-	-	-	-	O	0105-3105	49.08	-22.20
6200030	L4	747	S	X	X	-	-	-	-	-	-	X	-	O	0105-3105	50.25	-4.22
6200050	E1	861	X	X	X	-	-	X	-	-	-	X	-	O	0105-3105	50.04	-4.37
6200086	NSB II	65	X	X	X	X	X	-	-	-	-	X	-	O	2005-3105	55.00	6.40
6200087	NSB III	-	-	-	-	-	-	-	-	-	-	-	-	-	-	54.70	6.80

E-SURFMAR DB Monthly Report May 2016

6200191	Porto	-	-	-	-	-	-	-	-	-	-	-	-	-	-	41.15	-9.57
6200192	Peniche	-	-	-	-	-	-	-	-	-	-	-	-	-	-	39.50	-9.65
6200303	Turbo Bank	-	-	-	-	-	-	-	-	-	-	-	-	-	-	51.60	-5.10
6200442	PAP	-	-	-	-	-	-	-	-	-	-	-	-	-	-	49.00	-16.40
6600021	Arkona Becken	734	X	X	-	-	X	-	-	-	-	-	-	O	0105-3105	54.90	13.90
6600022	Oder Bank	-	-	-	-	-	-	-	-	-	-	-	-	-	-	54.10	14.20
6600024	Darsser Schwelle	-	-	-	-	-	-	-	-	-	-	-	-	-	-	54.70	12.70

Other offshore moored buoys inside the EUMETNET area

WMO	Name	nobs	Wi	AT	AP	dP	ST	Wa	Ws	Dr	Sb	U	SS	O	Start_end	Lat	Lon
1300001		714	X	X	X	-	-	-	-	-	-	X	-	O	0105-3105	11.47	-23.00
1300008		379	X	X	X	-	X	-	-	-	-	X	-	L	0105-3105	14.98	-38.02
1300308	East Atlantic	-	-	-	-	-	-	-	-	-	-	-	-	-	-	15.00	-38.00
4100026		348	X	X	-	-	X	-	-	-	-	X	-	L	0105-3105	11.49	-38.40
4100040	West Atlantic	765	X	X	X	X	X	X	-	-	-	X	-	O	0105-3105	14.50	-53.00
4100041	Mid. Atlantic	764	X	X	X	X	X	X	-	-	-	X	-	O	0105-3105	14.50	-46.00
4100043	Porto Rico	2930	X	X	X	X	X	X	-	-	-	X	-	O	0105-3105	21.00	-65.00
4100044		3117	X	X	X	X	X	X	-	-	-	X	-	O	0105-3105	21.70	-58.70
4100046		3599	X	X	X	X	X	X	-	-	-	X	-	O	0105-3105	23.90	-70.90
4100047		-	-	-	-	-	-	-	-	-	-	-	-	-	-	27.50	-71.50
4100048		756	X	X	X	X	X	X	-	-	-	X	-	O	0105-3105	32.00	-69.60
4100049		749	X	X	X	X	X	X	-	-	-	X	-	O	0105-3105	27.50	-53.00
4100139		360	X	X	X	-	X	-	-	-	-	X	-	L	0105-3105	20.02	-37.86
4100300	Antilles	727	X	X	X	-	X	X	-	-	-	X	-	T	0105-3105	15.85	-57.47
4200059	Caraibes	1824	X	X	X	X	X	X	-	-	-	X	-	O	1905-3105	15.00	-67.50
4400008	A Nantucket	770	X	X	X	X	X	X	-	-	-	X	-	O	0105-3105	40.50	-69.40
4400011	D Georges Bk	775	-	X	X	X	X	X	-	-	-	X	-	O	0105-3105	41.10	-66.60
4400018	SE Cape Cod	771	X	X	X	X	X	X	-	-	-	X	-	O	0105-3105	41.30	-69.30
4400024	NNE Channel	679	X	X	X	-	X	X	-	-	-	-	-	O	0105-3105	42.30	-65.90
4400137	E Scotia Sl.	740	X	X	X	X	X	X	-	-	-	-	-	O	0105-3105	42.30	-62.00
4400138	SW Gd Banks	-	-	-	-	-	-	-	-	-	-	-	-	-	-	44.30	-53.60
4400139	Beanquereau	741	X	X	X	X	X	X	-	-	-	-	-	O	0105-3105	44.30	-57.10
4400140	Tail of Bk	-	-	-	-	-	-	-	-	-	-	-	-	-	-	43.80	-51.70
4400141	Larentian F	730	X	X	X	X	X	X	-	-	-	-	-	O	0105-3105	43.00	-58.00
4400150	La Have Bk	737	X	X	X	X	X	X	-	-	-	-	-	O	0105-3105	42.50	-64.00

E-SURFMAR DB Monthly Report May 2016

Buoy-QC statistics from Meteo-France model outputs

Datend : Date of the last value received on GTS
Recvd : Total number of values received on GTS
GE : Number of Gross Errors (excluded from bias and sd computations)
bias : Mean differences between observation values and co-located model output values
Std : Standard deviation of differences

Air Pressure (hPa), drifting buoys, May 2016

Datend	WMO	Telcom	Recvd	GE	Bias	Std
20160531	1300868	11686410	744	0	0.3	0.5
20160531	1300869	11688410	745	0	0.2	0.4
20160531	1300871	61516870	737	0	0.5	0.3
20160531	1300872	61611050	744	0	0.4	0.3
20160531	1300881	62958450	744	0	-0.3	0.4
20160531	1300882	62851900	744	0	0.4	0.6
20160531	1500681	61661310	744	0	-0.4	0.4
20160531	1500682	61663300	744	0	0.5	0.6
20160531	1500683	61663370	744	0	0.6	0.4
20160531	1500685	62854900	744	0	-0.0	0.4
20160531	1500686	62959110	744	0	-0.3	0.4
20160507	1500688	62958430	155	0	0.1	0.8
20160531	1500689	62859770	744	0	0.0	0.4
20160531	1500690	62953440	744	0	0.2	0.7
20160531	1500691	62959100	744	0	0.3	0.4
20160531	1500692	62852910	744	0	0.1	0.4
20160531	1500693	62955320	744	0	0.1	0.4
20160531	1500694	62958270	744	0	0.3	0.5
20160531	1500695	62859890	744	0	0.3	0.4
20160531	1500696	62956260	744	0	0.0	0.7
20160531	1500697	62957270	744	0	0.3	0.6
20160531	2500617	61767070	744	0	-0.1	0.6
20160531	2500622	62850900	744	0	0.1	0.3
20160531	2500623	62955110	744	0	0.2	0.3
20160531	4100729	62321360	744	0	0.1	0.5
20160531	4100730	62326350	744	0	0.2	0.7
20160531	4100731	62329360	744	0	0.2	0.5
20160531	4100970	60213790	744	0	0.2	0.5
20160531	4100972	60217780	719	0	-0.1	0.3
20160531	4101700	62950270	348	0	0.3	0.4
20160531	4101701	62951270	304	0	0.2	0.6
20160531	4400513	61475450	744	0	0.5	0.4
20160531	4400515	61476450	743	0	0.0	0.5
20160531	4400517	61477390	742	0	0.2	0.4
20160531	4400546	11160640	744	0	-0.1	0.4
20160531	4400551	60892140	744	0	0.2	0.5
20160531	4400557	61568540	744	0	0.4	0.3
20160524	4400601	60890150	299	0	0.1	0.4
20160524	4400603	11793230	296	0	0.3	0.4
20160524	4400605	11473110	326	0	-0.1	0.4
20160531	4400613	11475040	744	0	-0.7	1.2
20160531	4400614	61661340	742	0	-0.2	0.4
20160531	4400624	11341110	724	0	-0.2	0.5
20160531	4400625	61668340	690	0	0.6	0.4
20160531	4400739	61516840	744	0	0.6	0.4
20160506	4400740	11883820	113	0	0.0	0.6
20160531	4400744	62953450	744	0	-0.0	0.4
20160531	4400746	62850730	744	0	0.2	0.3
20160531	4400747	62327370	744	0	0.0	0.4
20160531	4400761	61669320	744	0	-0.3	0.4
20160531	4400764	61662330	744	0	-0.1	0.5
20160531	4400765	62325370	693	0	0.3	0.8
20160531	4400766	62326340	744	0	-0.1	0.4
20160531	4400768	62322360	744	0	0.6	0.3
20160531	4400772	62950440	744	0	-0.2	0.5
20160531	4400773	11595650	744	0	0.5	0.4
20160531	4400775	61476400	744	0	0.4	0.8
20160531	4400776	61474410	742	0	0.5	0.3
20160531	4400777	62854730	744	0	0.3	0.5
20160531	4400778	61475430	744	0	0.2	0.4
20160531	4400779	62951460	744	0	0.1	0.5
20160531	4400835	60218770	744	0	-0.3	0.3

E-SURFMAR DB Monthly Report May 2016

20160531	4400836	60218680	744	0	0.1	0.3
20160531	4400837	60209590	744	0	-0.0	0.5
20160531	4400839	60205090	744	0	-0.1	0.3
20160531	4400846	60441290	744	0	0.5	0.3
20160531	4400848	60448280	742	0	0.3	0.4
20160531	4400856	62728390	642	0	0.4	0.6
20160531	4400857	62329370	744	0	0.3	0.5
20160531	4400863	60211690	744	0	-0.4	0.5
20160531	4400866	11793240	744	0	-0.3	0.4
20160531	4400867	11593590	744	0	-0.2	0.4
20160531	4400868	11794230	744	0	0.2	0.9
20160531	4400873	61612060	744	0	1.0	0.4
20160531	4400874	62858910	744	5	0.2	0.5
20160531	4400875	61616040	744	0	-0.1	0.7
20160531	4400885	60218780	744	0	-0.0	0.3
20160531	4400887	60251440	744	0	0.0	0.3
20160531	4400889	60202320	744	0	-0.0	0.5
20160531	4400890	12000230	744	0	0.0	0.7
20160531	4400891	12007220	744	0	-0.2	0.6
20160531	4400901	61472460	743	0	0.1	0.6
20160531	4400902	61471430	742	1	0.3	0.5
20160531	4400904	61471420	744	0	-0.2	0.4
20160531	4401500	61390930	737	0	0.5	0.5
20160531	4401501	61878860	733	0	0.8	0.9
20160531	4401502	61879840	736	0	-0.1	0.8
20160531	4401503	61879850	743	0	0.4	0.4
20160531	4401504	61879860	743	0	0.0	0.7
20160531	4401550	62952280	351	0	-0.1	0.4
20160531	4401551	62953270	352	0	0.1	0.4
20160531	4401552	62952270	352	0	0.2	0.4
20160531	6200513	61665360	744	0	0.0	0.4
20160531	6200553	11165650	744	0	-0.0	0.3
20160531	6200554	62952460	647	0	0.2	0.4
20160531	6200555	61515850	743	0	0.3	0.6
20160531	6200556	61510860	723	0	-0.2	0.3
20160531	6200557	62328340	744	0	0.2	0.4
20160531	6200558	62324370	669	0	0.1	0.5
20160531	6200559	62327350	744	0	0.4	0.4
20160531	6200713	11246980	722	0	-0.3	0.5
20160531	6200714	11240980	738	0	-0.3	0.4
20160531	6200940	60203850	744	0	-0.1	0.3
20160531	6200941	60207590	744	0	-0.1	0.4
20160531	6203500	61390940	741	0	0.2	0.5
20160531	6203501	61390950	740	0	0.4	0.4
20160531	6203502	61390960	741	0	0.4	0.3
20160531	6203503	61391920	740	0	-0.2	0.3
20160531	6203504	61391930	742	0	0.3	0.3
20160531	6300646	62951280	744	0	0.3	0.4
20160531	6400519	61518850	744	0	0.4	0.7
20160531	6400521	11470030	744	30	-0.2	1.4
20160531	6400523	61510870	717	0	0.2	0.4
20160531	6400524	61619040	742	0	0.6	0.4
20160531	6400526	61611070	679	0	0.2	0.5
20160531	6400549	60898120	744	0	-0.1	0.5
20160531	6400551	11795230	744	0	-0.1	0.4
20160531	6400553	62954270	744	0	-0.1	0.4
20160531	6400554	62958280	744	0	0.2	0.4
20160531	6400555	62955280	744	0	0.2	0.3
20160531	6400560	62956270	744	0	0.0	0.4
20160531	6400562	62957280	744	0	0.0	0.4
20160531	6400606	61515870	743	0	0.8	0.4
20160531	6400623	11470040	744	0	-0.4	0.4
20160531	6400666	60179710	744	0	0.3	0.4
20160513	6400667	61615060	278	0	-0.6	1.1
20160530	6400694	11548420	710	28	-0.3	1.2
20160531	6500514	62954450	744	0	0.0	0.6
20160531	6500515	62858710	744	0	0.1	0.7
20160531	6500519	61666340	744	0	0.6	0.5
20160531	6500596	61511850	737	0	0.4	0.6
20160531	6500599	62326370	744	0	0.2	0.5
20160531	6500601	62320360	744	0	0.2	0.5
20160531	6500602	62323360	744	0	-0.7	0.4
20160531	6500603	62959440	741	0	0.5	0.4
20160531	6501551	63734880	438	0	-0.0	0.4
20160531	6501552	63738810	438	0	0.4	0.5
20160531	6501553	63739730	437	0	0.3	0.5

E-SURFMAR DB Monthly Report May 2016

Air Pressure (hPa), moored buoys, May 2016

Datend	WMO	Telcom	Recvd	GE	Bias	Std
20160531	1300130		718	0	0.5	0.4
20160531	1300131		729	0	0.4	0.5
20160531	6100001		716	0	0.2	0.5
20160531	6100002		727	0	0.6	0.5
20160531	6100196		739	0	0.2	0.6
20160531	6100197		744	0	-0.6	0.6
20160531	6100198		744	0	0.5	0.6
20160531	6100280		744	0	0.4	0.6
20160531	6100281		744	0	0.4	0.7
20160531	6100417		744	0	0.4	0.6
20160531	6100430		744	0	0.2	0.6
20160531	6200001		656	0	-0.0	0.5
20160531	6200024		744	0	0.4	0.5
20160531	6200025		744	0	0.6	0.6
20160531	6200027		246	0	-0.1	0.5
20160531	6200029		744	1	-0.1	0.7
20160531	6200030		743	0	0.0	0.4
20160531	6200050		744	0	0.2	0.4
20160531	6200081		734	0	0.1	0.4
20160531	6200082		744	0	0.5	0.5
20160531	6200083		744	0	0.5	0.5
20160531	6200084		744	0	0.5	0.5
20160531	6200085		744	0	0.2	0.5
20160531	6200086		61	0	0.0	0.3
20160531	6200091		736	0	-0.0	0.4
20160531	6200092		291	0	-0.1	0.3
20160531	6200094		736	0	-0.1	0.4
20160531	6200095		331	0	0.1	0.4
20160531	6200105		698	1	-0.0	0.4
20160531	6200163		655	0	0.1	0.4
20160531	6400045		744	0	0.1	0.4
20160531	6400046		744	0	0.2	0.4

Air Temperature (C), moored buoys, May 2016

Datend	WMO	Telcom	Recvd	GE	Bias	Std
20160531	1300130		718	0	0.1	0.4
20160531	1300131		729	0	0.9	0.5
20160531	6100001		715	0	-0.2	0.7
20160531	6100002		727	0	0.2	0.5
20160531	6100196		739	0	0.2	0.5
20160531	6100197		744	0	2.2	0.4
20160531	6100198		744	0	-0.0	0.9
20160531	6100280		744	0	0.3	0.8
20160531	6100281		744	0	0.1	0.8
20160531	6100417		744	0	0.2	0.7
20160531	6100430		718	0	5.8	2.3
20160531	6200001		656	0	0.3	0.5
20160531	6200024		744	0	0.5	0.7
20160531	6200025		744	0	0.5	0.6
20160531	6200029		744	0	0.1	0.6
20160531	6200030		743	0	0.1	0.8
20160531	6200050		744	0	0.4	0.7
20160531	6200081		731	0	-0.1	0.6
20160531	6200082		744	0	0.2	0.5
20160531	6200083		744	0	-0.0	0.4
20160531	6200084		744	0	-0.1	0.5
20160531	6200085		744	0	-0.0	0.8
20160531	6200086		61	0	0.6	0.4
20160531	6200091		736	0	0.0	0.4
20160531	6200092		291	0	0.2	0.6
20160531	6200094		736	0	0.1	0.5
20160531	6200095		331	0	-0.6	0.4
20160531	6200105		723	0	-0.2	0.5
20160531	6200163		655	0	0.0	0.5
20160531	6400045		744	0	-0.2	0.5
20160531	6400046		744	0	-0.1	0.6
20160531	6600021		733	0	0.5	0.7

E-SURFMAR DB Monthly Report May 2016

Wind direction (deg.), moored buoys, May 2016

Datend	WMO	Telcom	Recvd	GE	Bias	Std
20160531	1300130		713	68	11	29
20160531	1300131		725	127	9	31
20160531	6100001		718	44	-3	26
20160531	6100002		727	10	-2	18
20160531	6100196		735	33	-8	24
20160531	6100197		735	17	-10	26
20160531	6100198		740	37	-4	21
20160531	6100280		728	36	-2	31
20160531	6100281		720	45	10	37
20160531	6100417		734	37	-8	25
20160531	6100430		741	51	-8	32
20160531	6200001		656	10	-3	23
20160531	6200024		732	30	-4	28
20160531	6200025		731	70	-1	31
20160531	6200027		216	9	-4	38
20160531	6200029		743	13	-2	16
20160524	6200030		568	31	-94	28
20160531	6200050		742	19	2	20
20160531	6200081		732	5	-3	17
20160531	6200082		739	27	4	24
20160531	6200083		726	8	-4	22
20160531	6200084		738	4	-1	19
20160531	6200085		740	25	-3	21
20160531	6200086		61	0	7	12
20160531	6200091		735	8	-1	19
20160531	6200092		290	4	-3	20
20160531	6200094		734	4	-1	19
20160531	6200095		331	0	-1	13
20160531	6200105		669	4	-2	15
20160531	6200163		653	4	2	16
20160531	6400045		469	2	-4	19
20160531	6400046		744	0	5	13
20160531	6600021		730	14	-1	19

Wind speed rate, moored buoys, May 2016

Datend	WMO	Telcom	Recvd	GE	Rate	Err
20160531	1300130		713	0	1.1	2.5
20160531	1300131		725	0	1.3	3.5
20160531	6100001		718	2	1.3	2.5
20160531	6100002		727	0	0.9	1.7
20160531	6100196		735	1	1.0	1.8
20160531	6100197		735	0	1.0	1.5
20160531	6100198		740	0	1.0	2.0
20160531	6100280		728	0	1.2	1.7
20160531	6100281		720	0	1.5	2.2
20160531	6100417		734	0	1.0	1.6
20160531	6100430		741	0	1.4	1.7
20160531	6200001		656	0	1.2	1.3
20160531	6200024		732	0	1.2	1.8
20160531	6200025		731	0	1.0	2.1
20160531	6200027		216	0	1.0	1.3
20160531	6200029		743	0	1.1	1.2
20160524	6200030		568	16	1.1	1.7
20160531	6200050		742	0	1.1	1.4
20160531	6200081		732	0	1.0	1.2
20160531	6200082		739	0	0.9	1.5
20160531	6200083		726	0	0.7	1.8
20160531	6200084		738	0	0.9	1.4
20160531	6200085		740	0	0.9	1.7
20160531	6200086		61	0	1.0	1.1
20160531	6200091		735	0	0.9	1.4
20160531	6200092		290	0	1.0	1.1
20160531	6200094		734	0	1.0	1.6
20160531	6200095		331	0	1.1	1.2
20160531	6200105		669	0	1.1	1.3
20160531	6200163		653	0	1.0	1.0
20160531	6400045		469	0	1.2	1.4
20160531	6400046		744	0	1.0	1.2
20160531	6600021		730	0	1.1	1.2

Comments on QC statistics :

Air pressure

1. Metocean buoy WMO **4400873** (manufactured in 2013, deployed in 2015) has developed a bias over the recent months and this bias is now reaching 1 hPa, by comparison with various models. Pressure data from that drifter will be switched off (such data are assumed of high quality and not necessarily bias-corrected).
2. Metocean buoy WMO **6400521** (manufactured in 2012, deployed in 2013) reported wrong pressure values between 17th and 22th of May before returning to normal.
3. Metocean buoy WMO **6400694** (manufactured in 2012, deployed in 2015) has been reporting wrong pressure values since 28th May. At time of writing, the pressure data from this buoy have been taken off the GTS.

Air Temperature

1. Spanish moored buoys WMO **6100197** (Mahon) and **6100430** (Dragonera) continue to report air temperature values with systematic biases in excess of 2°C.

Wind

1. British moored buoy WMO **6200030** (Plymouth Marine Laboratory L4) continues to report dubious wind data (since April).

Monthly QC statistics and other data quality control tools are available on line at :
<http://www.meteo.shom.fr/qctools/>

The working area of the E-SURFMAR website is open at <http://esurfmar.meteo.fr/wikisurf-wa/> . Ask the E-SURFMAR Programme Manager Pierre.Blouch@meteo.fr for the password in case you forgot it. Graphs of system performances may be displayed/downloaded at http://esurfmar.meteo.fr/doc/r/surfmar/others/e-surfmar_monitoring.pdf.